

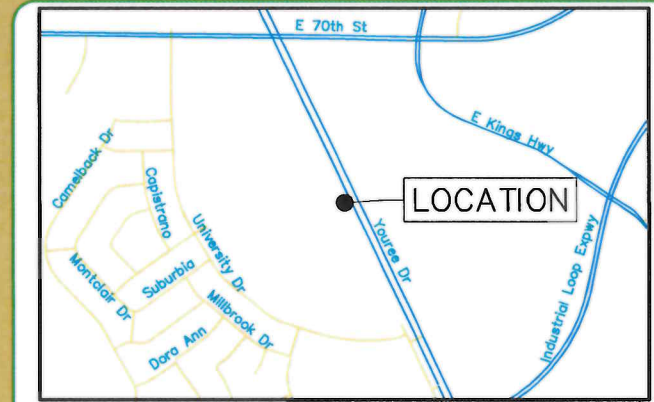
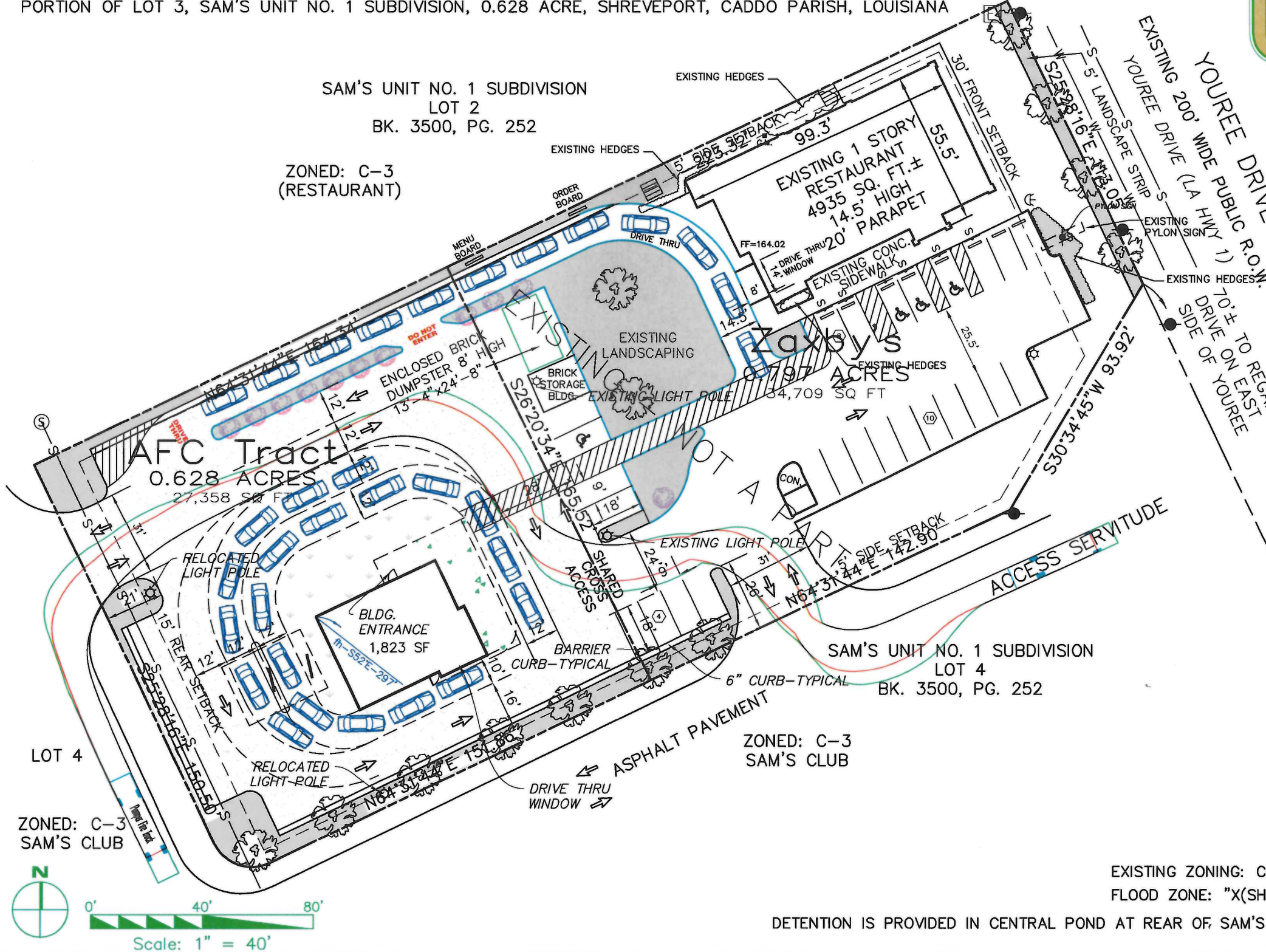
OWNERSHIP:

A&M CAPITAL HOLDINGS LLC, 315A WALLACE DEAN ROAD, WEST MONROE, LA. 71291 RAY ANDING 318-381-5632
 PORTION OF LOT 3, SAM'S UNIT NO. 1 SUBDIVISION, 0.628 ACRE, SHREVEPORT, CADDO PARISH, LOUISIANA





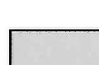
Mohr and Associates, Inc.

Consulting Civil Engineers & Land Surveyors
 1324 N. Hearne Ave., Ste 301 Phone : (318) 686-7190
 Shreveport, Louisiana 71107 Fax : (318) 402-4400



Vicinity Map Scale: 1" = 2000'

LANDSCAPING SCHEDULE

-  CRAPE MYRTLE (MIN. 3" CALIPER) (9 TREES)
-  INDIAN HAWTHORNE-APPROX. 11
-  MULCHED LANDSCAPE AREA AND LANDSCAPE STRIP CONSISTS OF SHRUBS, GROUND COVER, PLANTS

**EXECUTIVE
 DIRECTOR
 APPROVAL**

11-1-2021 *Andy*
 Date By

EXISTING ZONING: C-3
 FLOOD ZONE: "X(SHADED)"

DETENTION IS PROVIDED IN CENTRAL POND AT REAR OF SAM'S CLUB

Andy's Frozen Custard

21-129-C