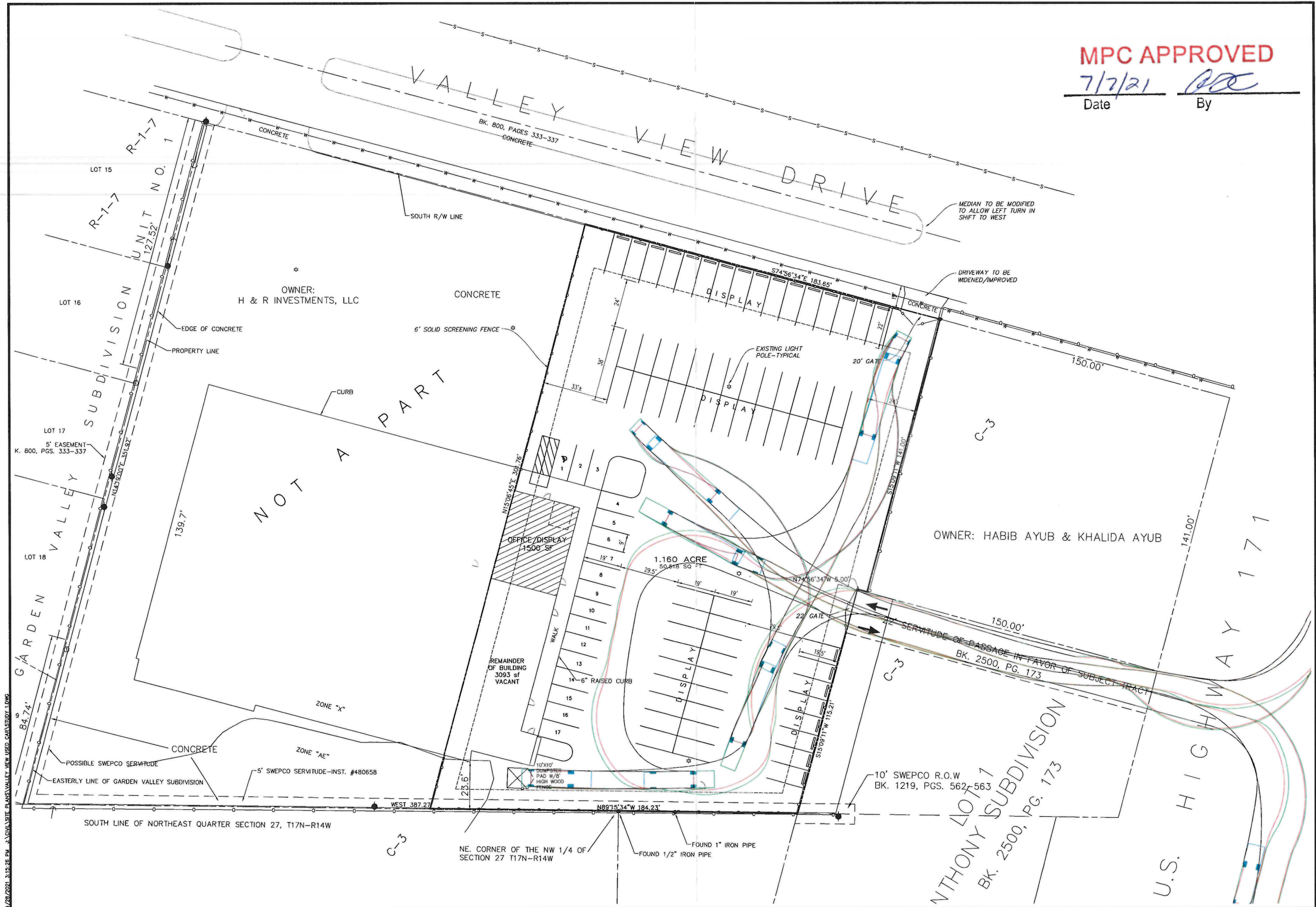


MPC APPROVED

7/7/21
Date By *POE*



NO.	REVISIONS	DATE

Mohr and Associates, Inc.
 Consulting Civil Engineers & Land Surveyors
 1324 N. Hearne Ave., Ste 301
 Shreveport, Louisiana 71107
 Phone: (318) 686-7190
 Fax: (318) 402-4400



SITE PLAN CAR SALES VALLEY VIEW DRIVE

FOR: H & R INVESTMENTS, LLC

Date	12-16-2020
Scale	1"=20'
Drawn	B. ANDERSON
Job	37820
Sheet	1
of	1 Sheets

21-11-C

#1 10x12
commercial
roll up door

NORTH

MPC APPROVED

7/7/21

[Signature]

Date

By

DARK
BLUE

#2

36x 84
Glass door



Unit 3

EAST

MPC APPROVED

7/7/21

Date

[Signature]

By

Unit 4

Unit 2

Unit 1 - CAR SALES

FUTURE

DARK BLUE



EAST

MPC APPROVED

7/7/21

Date



By

#1 36x84

DARK
BLUE

Glass entrance door

1

