

Notes:

- Only improvements are to the front and right elevations. The left elevation contains an iron trellis that is remaining in place. The rear elevation is unchanged
- New roof material shall be 26 ga. exposed fastener panels comparable to previously existing. See Max-Rib by McElroy Metals attached
- Exterior wall finish shall be a sand texture stucco in a tan finish. This is a significant upgrade from the plywood siding panels previously existing.
- Windows shall be tempered and laminated glass with operable awning casement configuration in white vinyl sash. Window jambs shall be stucco returns.

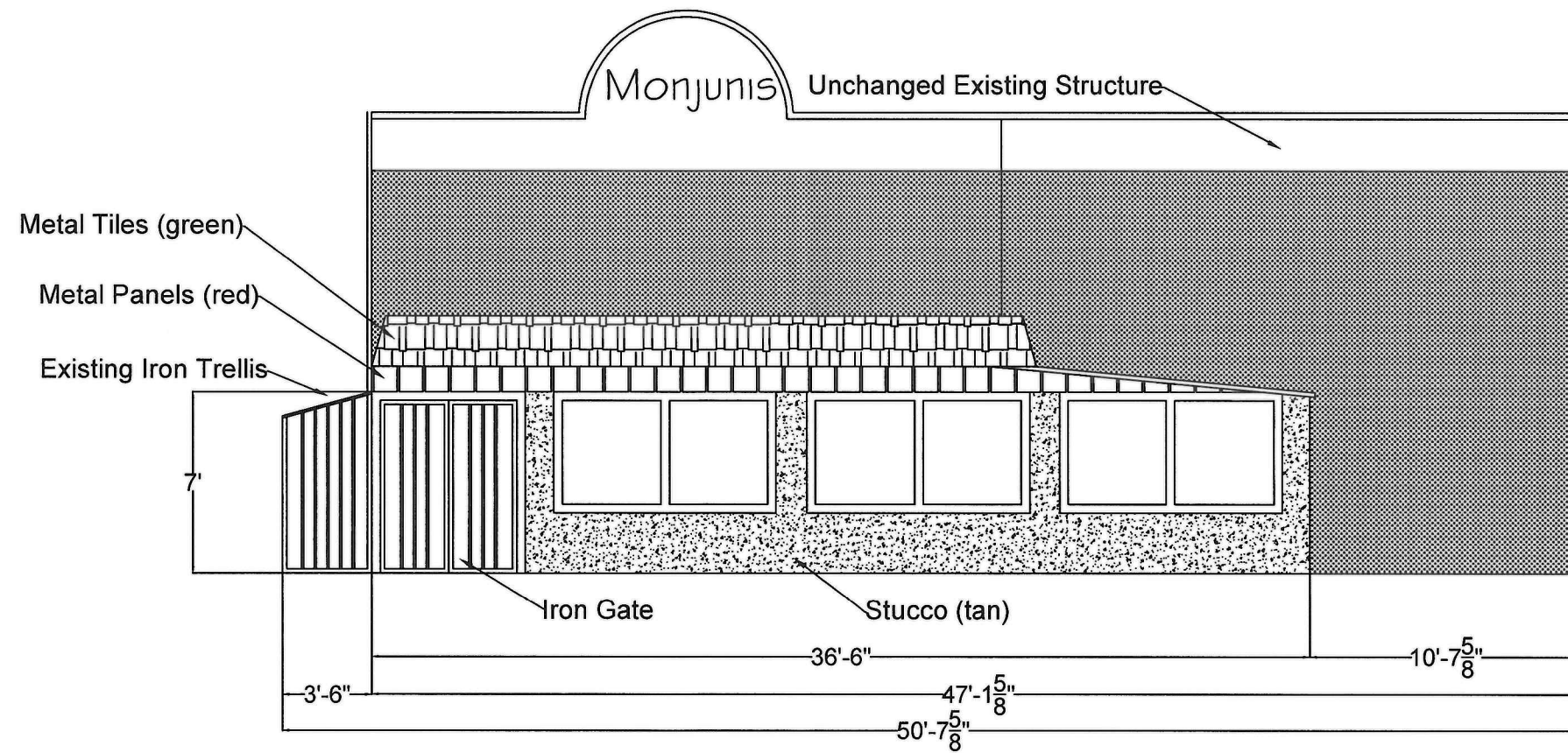
COMMENTS	PROPRIETARY AND CONFIDENTIAL THE INFORMATION CONTAINED IN THIS DRAWING IS THE SOLE PROPERTY OF PINTAIL ROOFING, LLC. ANY REPRODUCTION IN PART OR AS A WHOLE WITHOUT THE WRITTEN PERMISSION OF PINTAIL ROOFING, LLC IS PROHIBITED.	PINTAIL ROOFING, LLC			
		1315 LOUISIANA AVE			
		SIZE: A	DRN. BY: H FLINT	DWG NO. MoL-01	CUSTOMER: JIM ROSSO
REV. 0	SCALE:	DATE		03/01/2021	

EXECUTIVE
DIRECTOR
APPROVAL

6/7/2021
Date


By

Front Elevation



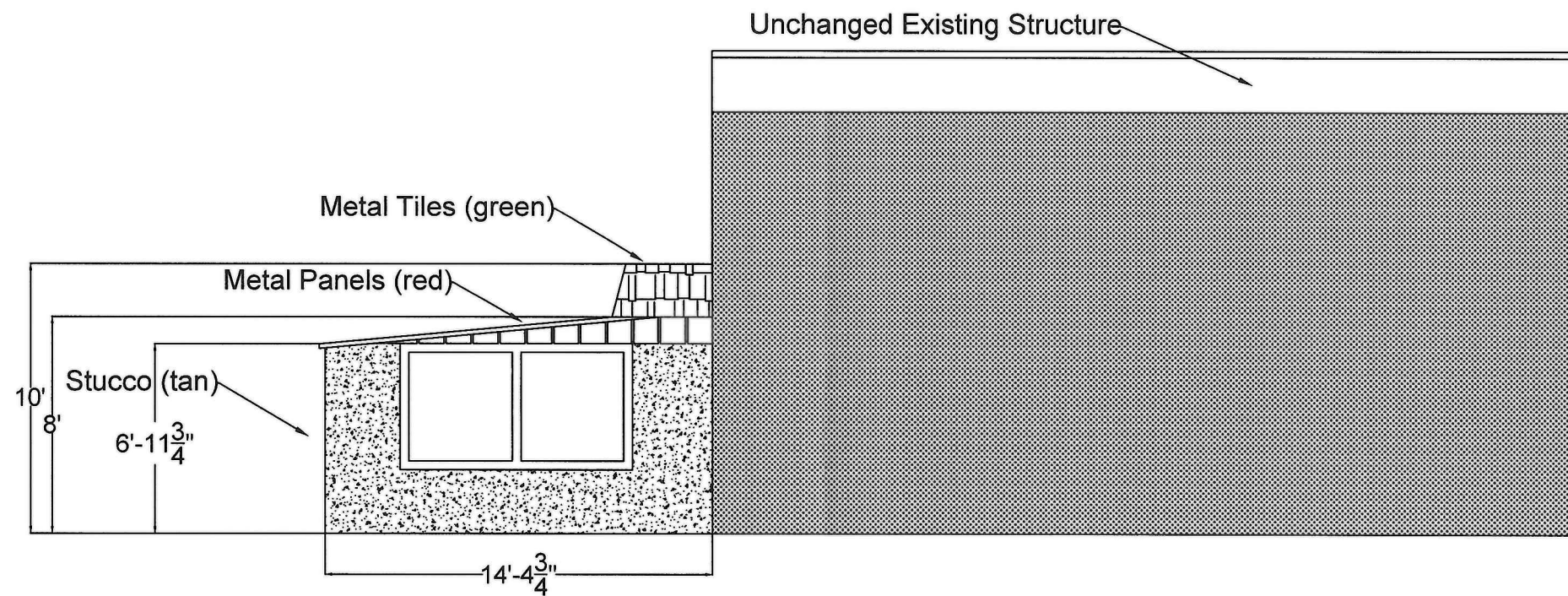
EXECUTIVE
DIRECTOR
APPROVAL

6/7/2021
Date

[Signature]
By

COMMENTS	PROPRIETARY AND CONFIDENTIAL THE INFORMATION CONTAINED IN THIS DRAWING IS THE SOLE PROPERTY OF PINTAIL ROOFING, LLC. ANY REPRODUCTION IN PART OR AS A WHOLE WITHOUT THE WRITTEN PERMISSION OF PINTAIL ROOFING, LLC IS PROHIBITED.	PINTAIL ROOFING, LLC	
		1315 LOUISIANA AVE	
		SIZE: A	DRN. BY: H FLINT
REV. 0	SCALE:	DATE	03/01/2021

Right Elevation



EXECUTIVE
DIRECTOR
APPROVAL

6/7/2021
Date

[Signature]
By

COMMENTS	PROPRIETARY AND CONFIDENTIAL THE INFORMATION CONTAINED IN THIS DRAWING IS THE SOLE PROPERTY OF PINTAIL ROOFING, LLC. ANY REPRODUCTION IN PART OR AS A WHOLE WITHOUT THE WRITTEN PERMISSION OF PINTAIL ROOFING, LLC IS PROHIBITED.	PINTAIL ROOFING, LLC		
		1315 LOUISIANA AVE		
		SIZE: A	DRN. BY: H FLINT	DWG NO. MoL-03
REV. 0	SCALE:	DATE 03/01/2021		