

PRELIMINARY	
REVIEW	
BIDDING	
PERMIT	
CONSTRUCTION	X
DATE:	05-12-21
SET #	

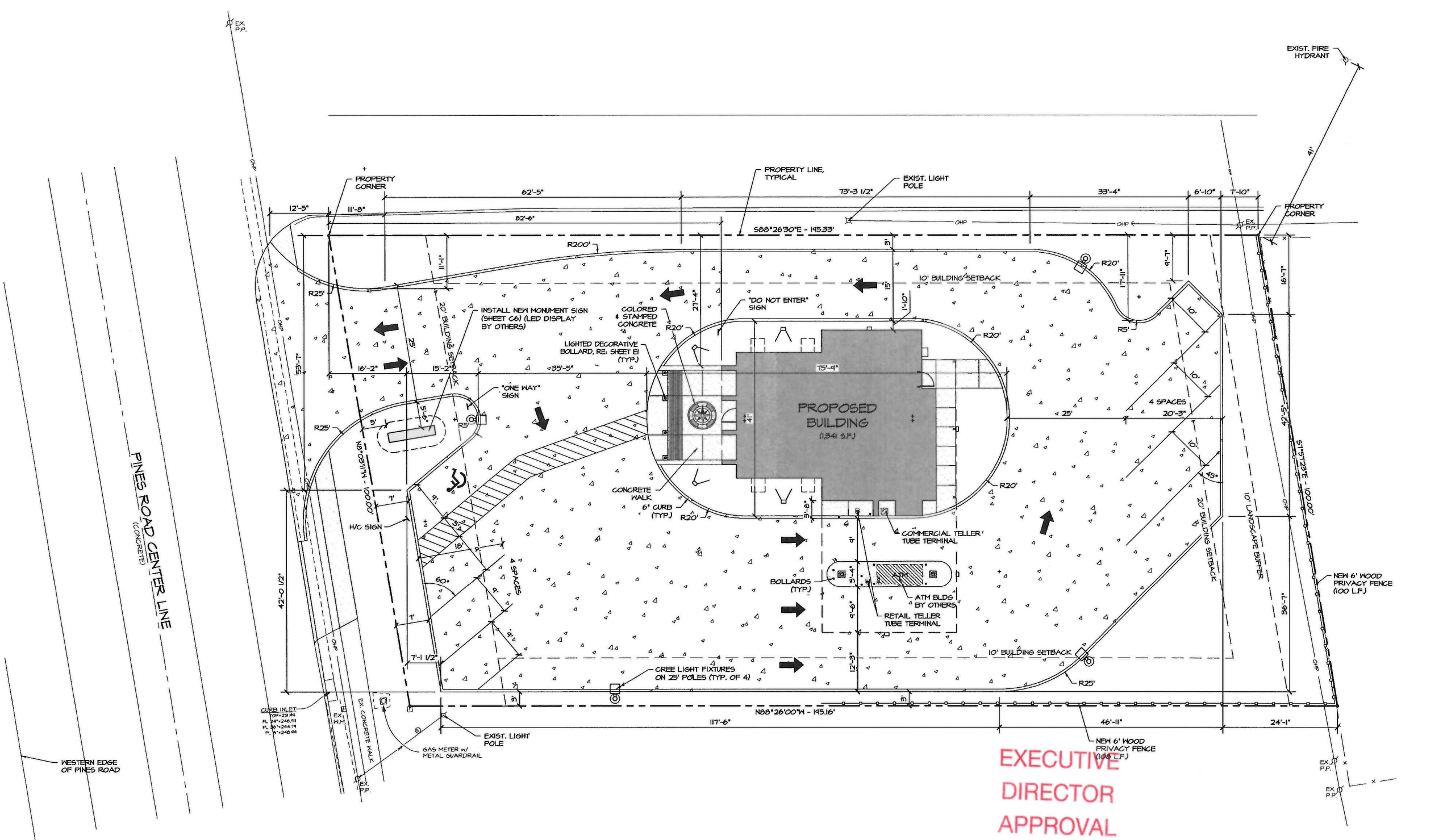
THESE DRAWINGS AND DESIGNS ARE THE INSTRUMENTS OF SERVICE FOR MIALL WHATLEY ARCHITECTURE, LLC, IN PRODUCING AND TRANSMITTING THESE INSTRUMENTS OF SERVICE. MIALL WHATLEY ARCHITECTURE, LLC IS THE COPYRIGHT OWNER OF THESE DRAWINGS AND DESIGNS. THE DRAWINGS AND DESIGNS ARE SUBMITTED ON THE CONDITION THAT THEY ARE NOT TO BE USED, REPRODUCED, OR COPIED IN WHOLE OR IN PART, OR USED FOR FURNISHING INFORMATION TO OTHERS, WITHOUT THE PERMISSION OF MIALL WHATLEY ARCHITECTURE, LLC.

PROPOSED FACILITY FOR:
Home Federal Bank
Pines Road Branch
 6403 PINES ROAD
 SHREVEPORT, LA 71129

EXECUTIVE DIRECTOR APPROVAL

PROJECT #	2191	DATE:	
DRAWN BY:	SGB	REVISION:	
CHECKED BY:	SGB		
DRAWN BY:	SGB		
CHECKED BY:	SGB		
CIVIL PLANS			
ARCH PLANS			
SHEET			

P:\Home Federal Bank - Pines Road (2021)\Architecture Department\Drawings\Home Federal Bank - Pines Road-Civil\NDW (05-12-21).dwg, 5/14/2021 11:13:45 AM, shawn



SITE PLAN
 SCALE: 1"=10'-0"
 0 10' 20'

5-26-2021
 Date By *an ch*

THE BOUNDARY DESCRIPTIONS SHOWN HEREIN SHALL BE CONSIDERED "FOR INFORMATION PURPOSES ONLY" AND SHALL NOT BE MISCONSTRUED AS A SIGNED, SEALED OR CERTIFIED PROFESSIONAL LAND SURVEYOR'S "PRODUCT". IF, AT ANY TIME OR FOR ANY REASON, A SIGNED, SEALED OR CERTIFIED SURVEY IS REQUIRED, A PROFESSIONAL LAND SURVEYOR SHALL BE OBTAINED PER THE LOUISIANA PROFESSIONAL LAND SURVEYOR LICENSING LAWS.

21-48-C

PRELIMINARY	X
REVIEW	
BIDDING	
PERMIT	
CONSTRUCTION	
DATE:	04-26-21
SET #	

THESE DRAWINGS AND DESIGNS ARE THE INSTRUMENTS OF SERVICE FOR NIAL WHITLEY ARCHITECTURE, LLC. IN PROVIDING AND TRANSMITTING THESE INSTRUMENTS OF SERVICE, NIAL WHITLEY ARCHITECTURE, LLC IS THE COPYRIGHT OWNER OF THESE DRAWINGS AND DESIGNS. THE DRAWINGS AND DESIGNS ARE SUBMITTED ON THE CONDITION THAT THEY ARE NOT TO BE USED, REPRODUCED, OR COPIED IN WHOLE OR IN PART, OR USED FOR FURNISHING INFORMATION TO OTHERS, WITHOUT THE PERMISSION OF NIAL WHITLEY ARCHITECTURE, LLC.

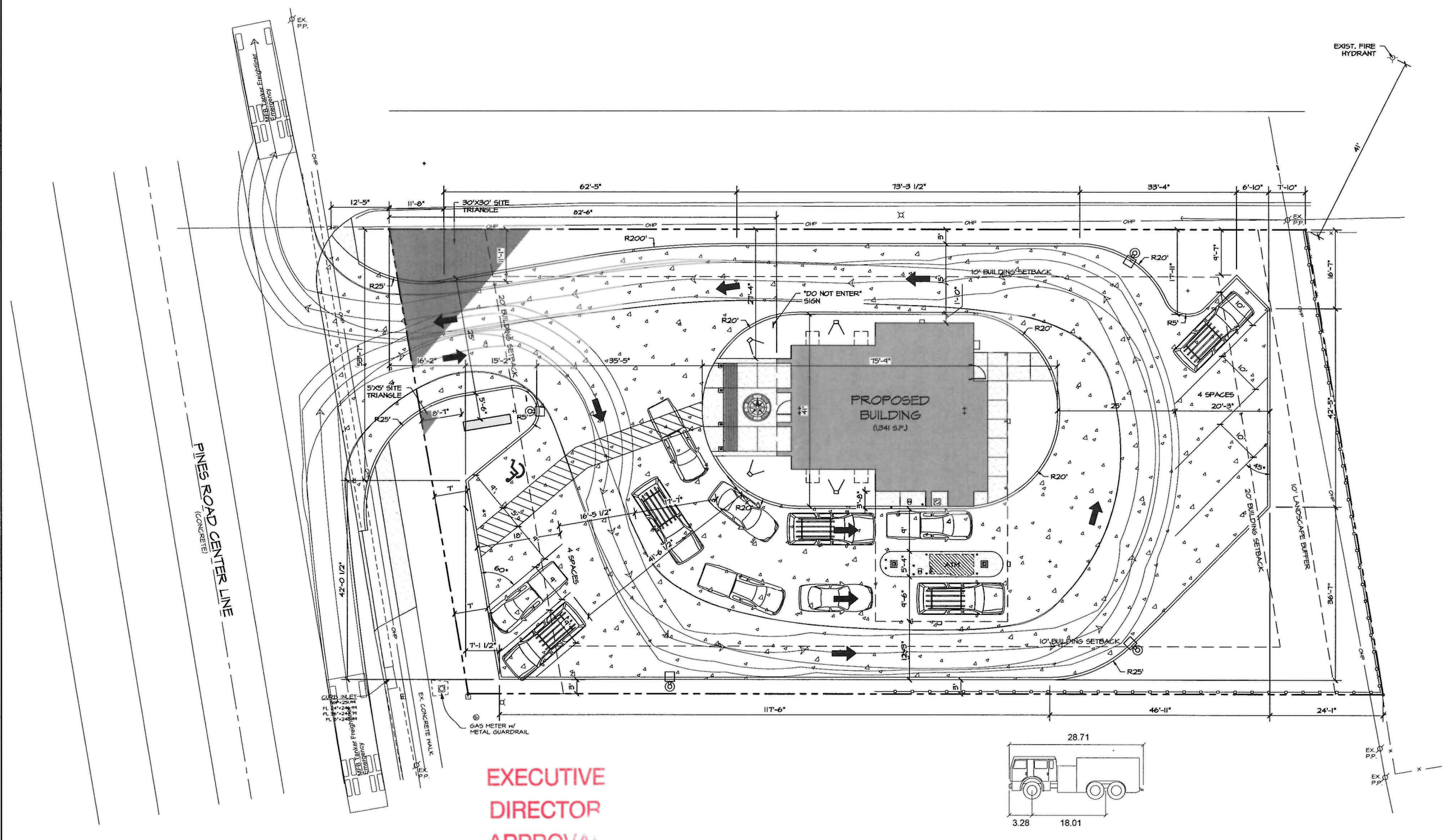
PROPOSED FACILITY FOR:
Home Federal Bank
Pines Road Branch

6903 PINES ROAD
 SHREVEPORT, LA

SITE PLAN

PROJECT #	2191	DATE:	
DRAWN BY:	SGB	REVISION:	
CHECKED BY:	SGB		
DRAWN BY:	SGB		
CHECKED BY:	SGB		
CIVIL PLANS			
ARCH PLANS			
SHEET			

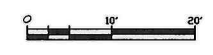
61



EXECUTIVE DIRECTOR APPROVAL

5-26-2021 *AW*
 Date By

SITE PLAN - MPC
 SCALE: 1"=10'-0"



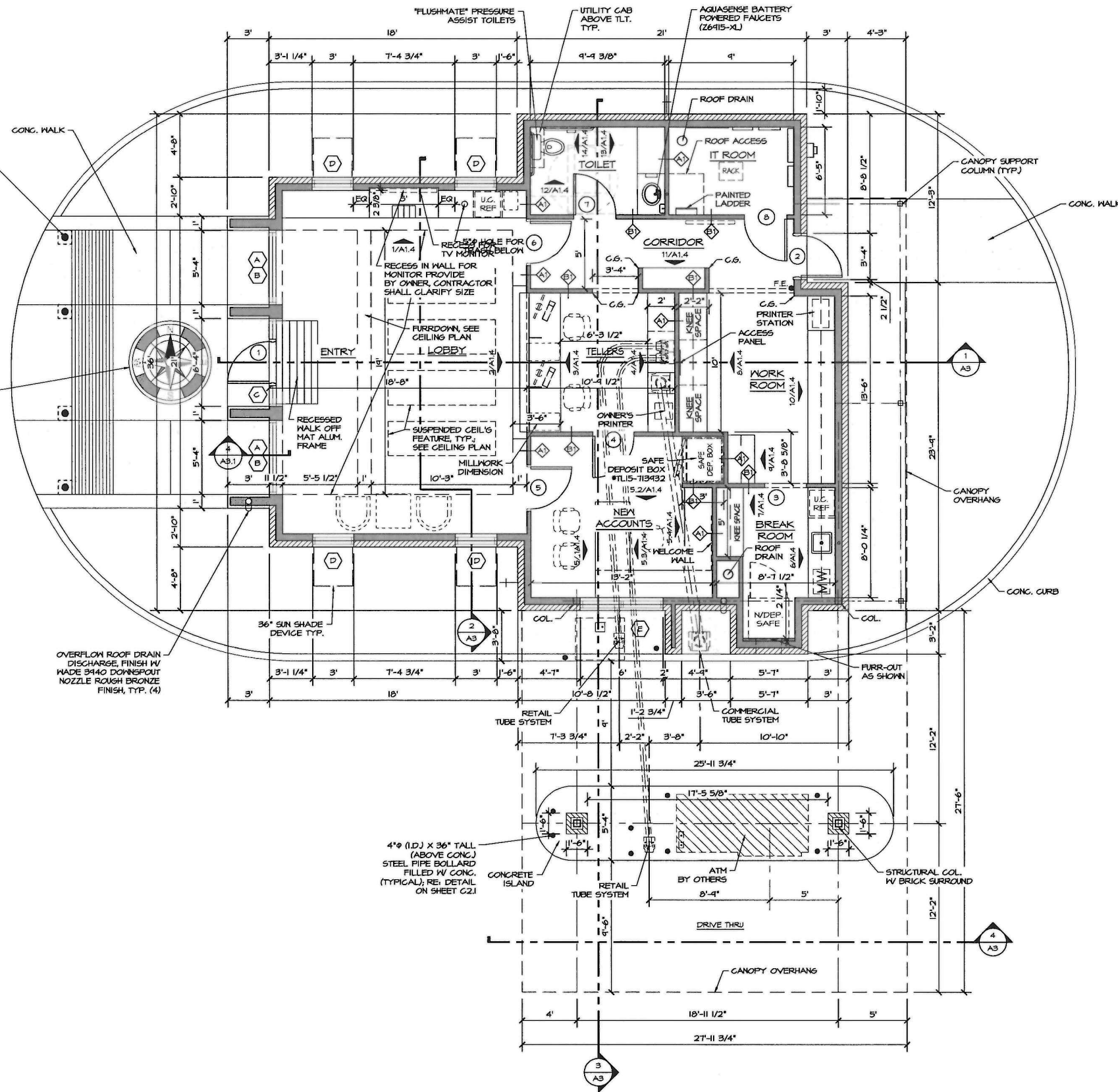
THE BOUNDARY DESCRIPTIONS SHOWN HEREIN SHALL BE CONSIDERED "FOR INFORMATION PURPOSES ONLY" AND SHALL NOT BE MISCONSTRUED AS A SIGNED, SEALED OR CERTIFIED PROFESSIONAL LAND SURVEYOR'S "PRODUCT". IF, AT ANY TIME OR FOR ANY REASON, A SIGNED, SEALED OR CERTIFIED SURVEY IS REQUIRED, A PROFESSIONAL LAND SURVEYOR SHALL BE OBTAINED PER THE LOUISIANA PROFESSIONAL LAND SURVEYOR LICENSING LAWS.

21-48-C



FLOOR PLAN

SCALE: 1/4"=1'-0"
SQUARE FOOTAGE (HEATED) = 1,341 SF



**EXECUTIVE
DIRECTOR
APPROVAL**

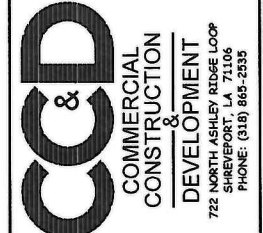
5-26-2021 *ACA*
Date By

NOTES

1. COORDINATE SAFE DEPOSIT INSTALLATION WITH VENDOR PRIOR TO INSTALLING ADJACENT WALLS.
2. SEE ROOM FINISH SCHEDULE FOR ALL INTERIOR FINISHES.
3. SEE ROOF PLAN FOR ROOF DRAIN LOCATIONS.

NOTE: ALL FURNITURE AND FIXTURES AS DENOTED BY DASHED LINES SHALL BE FURNISHED AND INSTALLED BY OWNER.

NOTE: ALL DIMENSIONS ARE FROM FRAMING TO FRAMING, UNLESS OTHERWISE NOTED.



PRELIMINARY					
REVIEW					
BIDDING					
PERMIT					
CONSTRUCTION	X				
DATE: 05-12-21					SET #

THESE DRAWINGS AND DESIGNS ARE THE INSTRUMENTS OF SERVICE FOR NIALL WHITLEY ARCHITECTURE, LLC. IN PROVIDING AND TRANSMITTING THESE INSTRUMENTS OF SERVICE, NIALL WHITLEY ARCHITECTURE, LLC IS THE COPYRIGHT OWNER OF THESE DRAWINGS AND DESIGNS. THE DRAWINGS AND DESIGNS ARE SUBMITTED ON THE CONDITION THAT THEY ARE NOT TO BE USED, REPRODUCED, OR COPIED IN WHOLE OR IN PART, OR USED FOR FURNISHING INFORMATION TO OTHERS, WITHOUT THE PERMISSION OF NIALL WHITLEY ARCHITECTURE, LLC.

PROPOSED FACILITY FOR:
**Home Federal Bank
Pines Road Branch**

6903 PINES ROAD
SHREVEPORT, LA 71129

PROJECT #	2191	DATE:	
DRAWN BY:	SGB	REVISION:	
CHECKED BY:			
DRAWN BY:	SGB		
CHECKED BY:			
CIVIL PLANS			
ARCH PLANS			
SHEET			

A1

FLOOR PLAN

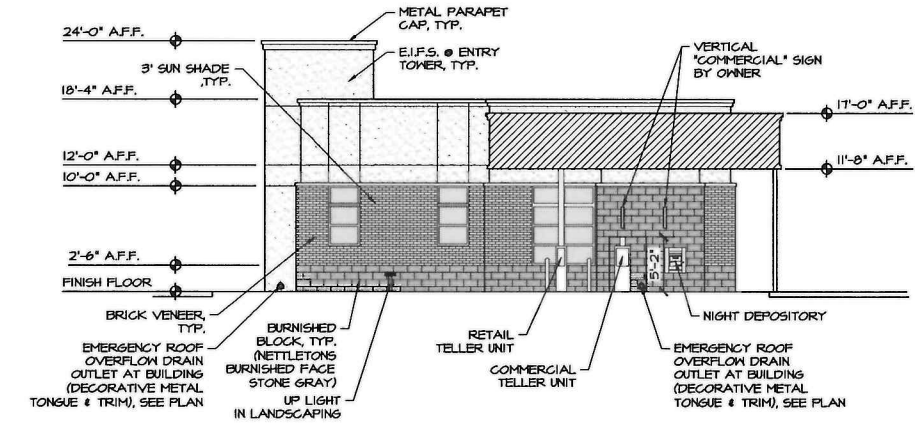
21-48-C

EXECUTIVE DIRECTOR APPROVAL

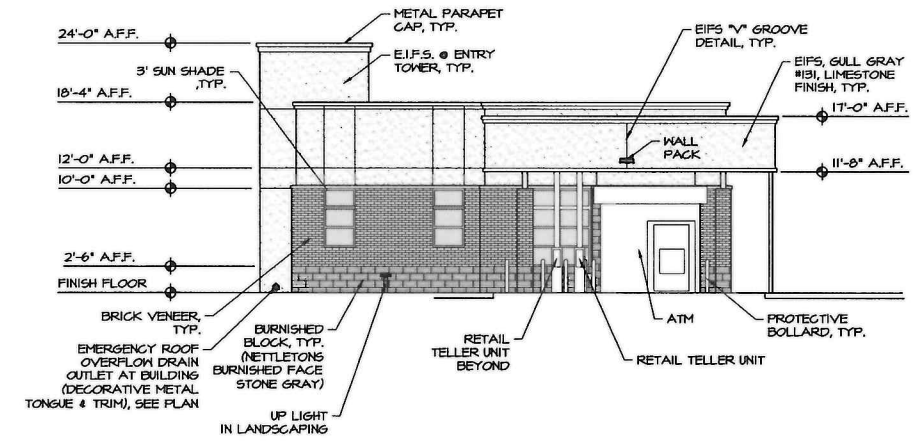
5-26-2021 Date *aa* By

PRELIMINARY	REVIEW	BIDDING	PERMIT	CONSTRUCTION	X
DATE: 05-12-21					SET #

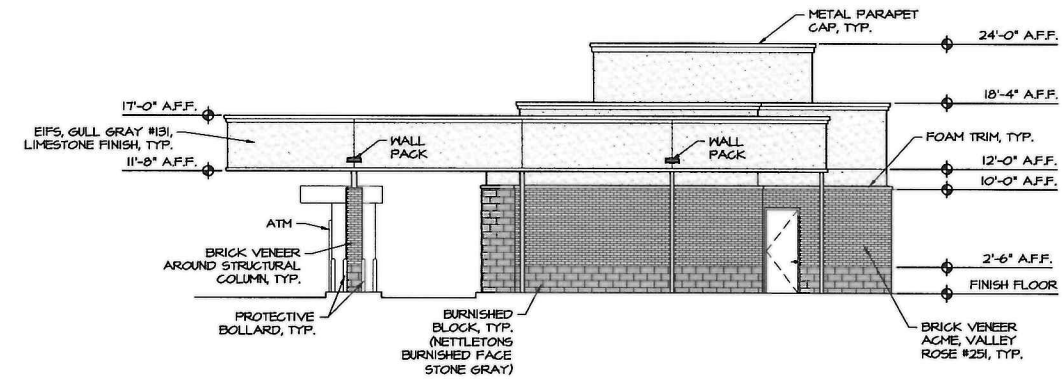
THESE DRAWINGS AND DESIGNS ARE THE INSTRUMENTS OF SERVICE FOR NIAL WHATELY ARCHITECTURE, LLC. IN PROVISION AND TRANSMITTING THESE INSTRUMENTS OF SERVICE, NIAL WHATELY ARCHITECTURE, LLC IS THE COPYRIGHT OWNER OF THESE DRAWINGS AND DESIGNS. THE DRAWINGS AND DESIGNS ARE SUBMITTED ON THE CONDITION THAT THEY ARE NOT TO BE USED, REPRODUCED, OR COPIED IN WHOLE OR IN PART, OR USED FOR FURNISHING INFORMATION TO OTHERS, WITHOUT THE PERMISSION OF NIAL WHATELY ARCHITECTURE, LLC.



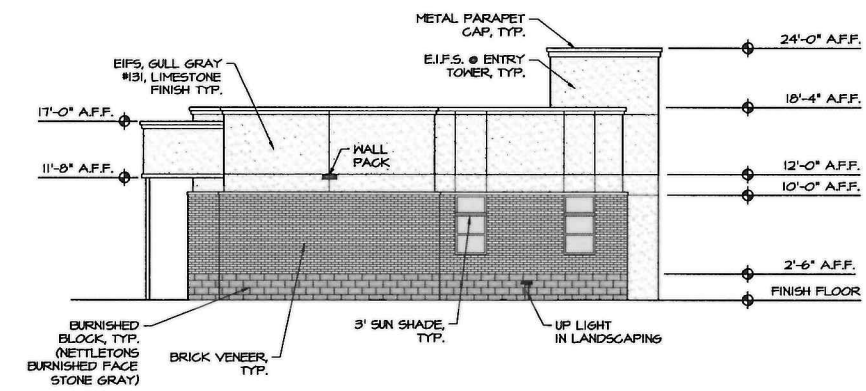
AUXILIARY SOUTH ELEVATION
 SCALE: 1/8"=1'-0"



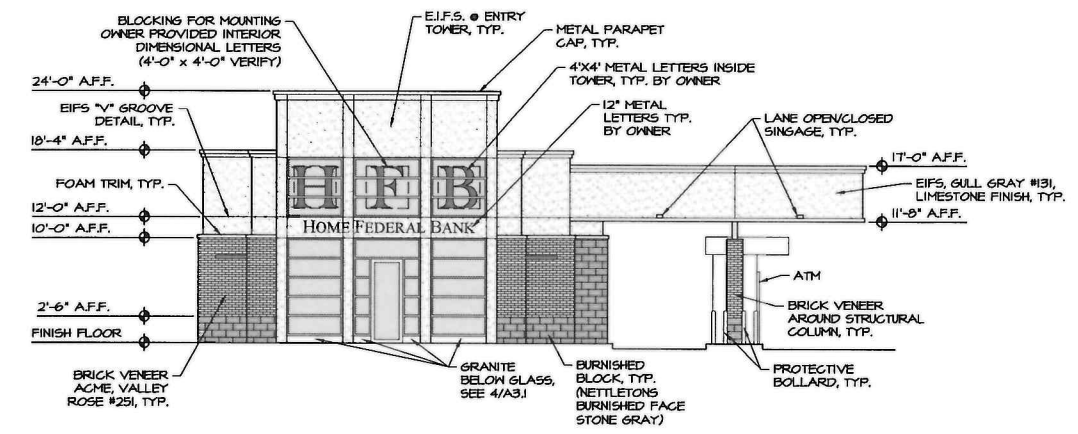
SOUTH ELEVATION
 SCALE: 1/8"=1'-0"



EAST ELEVATION
 SCALE: 1/8"=1'-0"



NORTH ELEVATION
 SCALE: 1/8"=1'-0"



WEST ELEVATION
 SCALE: 1/8"=1'-0"

PROPOSED FACILITY FOR:
Home Federal Bank
Pines Road Branch

6403 PINES ROAD
 SHREVEPORT, LA 71129

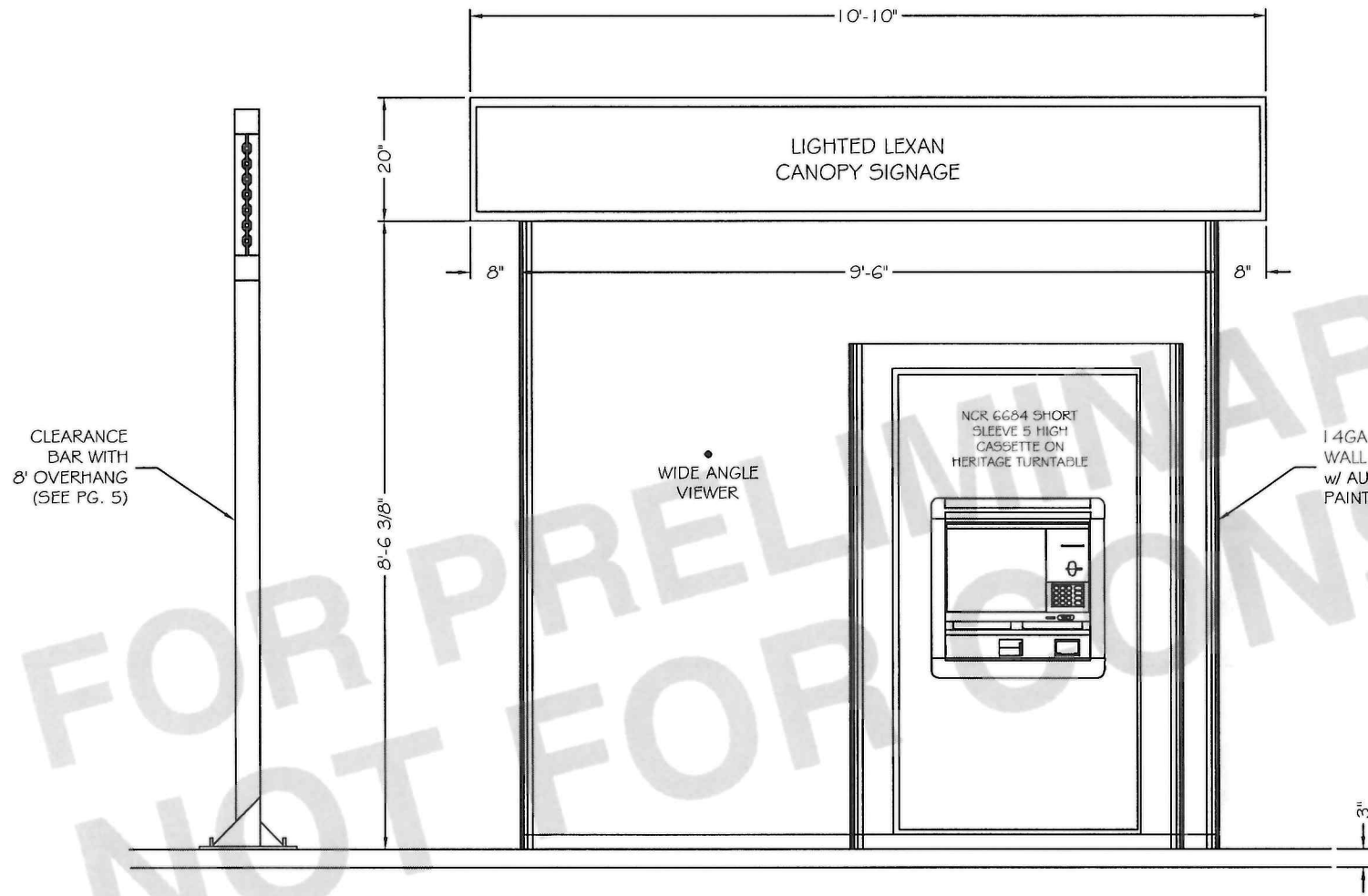
EXTERIOR ELEVATIONS

PROJECT #	2191	DATE:	
DRAWN BY:	SGB	REVISION:	
CHECKED BY:	SGB		
DRAWN BY:	SGB		
CHECKED BY:	SGB		
CIVIL PLANS			
ARCH PLANS			
SHEET			

A2

21-48-C

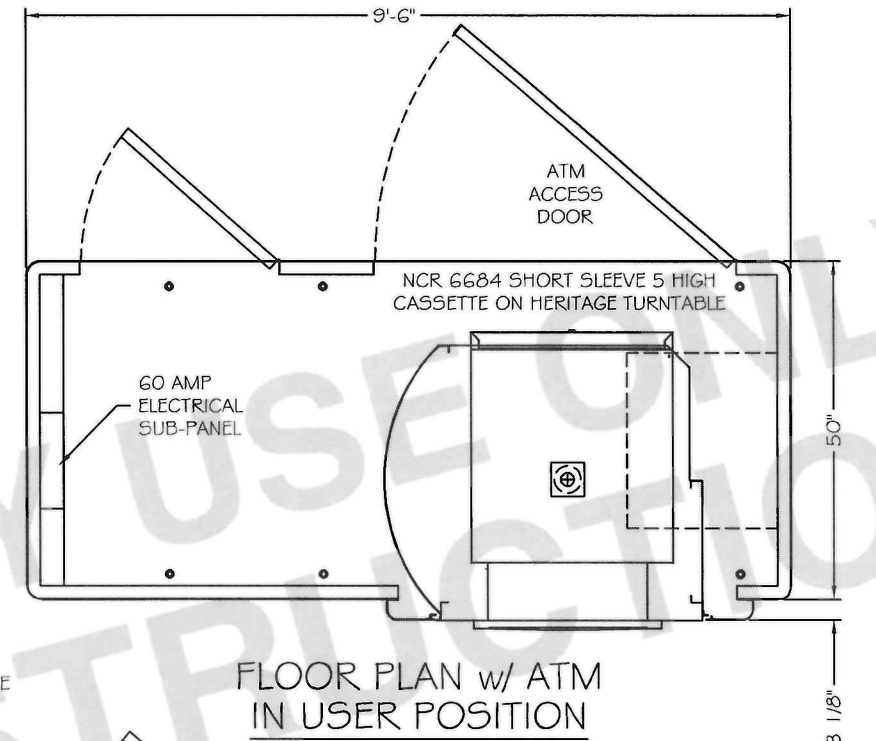
DRAWINGS ARE FOR PRELIMINARY USE ONLY
NOT INTENDED FOR PRODUCTION



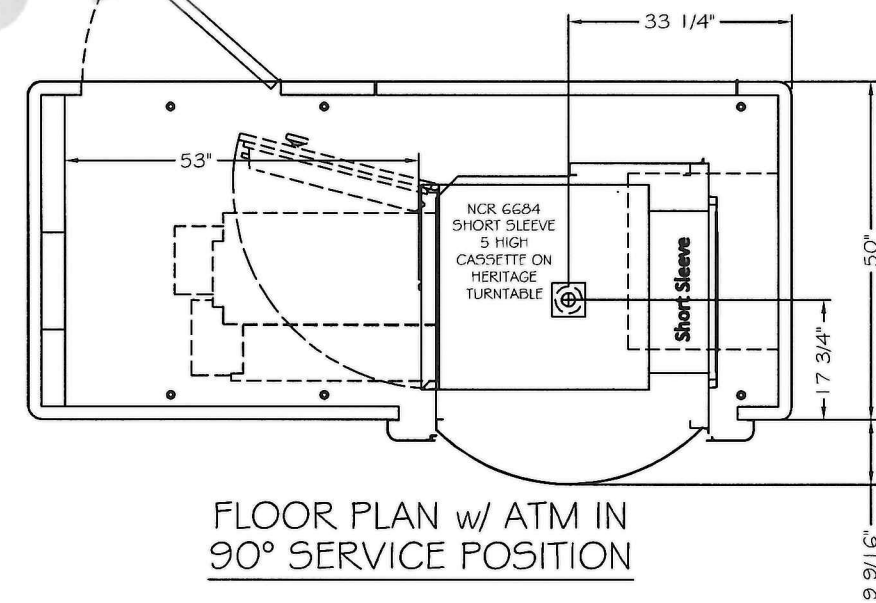
EXECUTIVE
DIRECTOR
APPROVAL

FRONT ELEVATION
SCALE: 1/2" = 1'

5-26-2021
Date By *AC*



FLOOR PLAN w/ ATM
IN USER POSITION



FLOOR PLAN w/ ATM IN
90° SERVICE POSITION



HERITAGE
The World Leader in ATM Kiosks

DEALER: QSI, INC.
ADDRESS: 107 SCHULER DRIVE
BARDSTOWN, KY 40004

MODEL#
3200
ATM
NCR 6684 5H

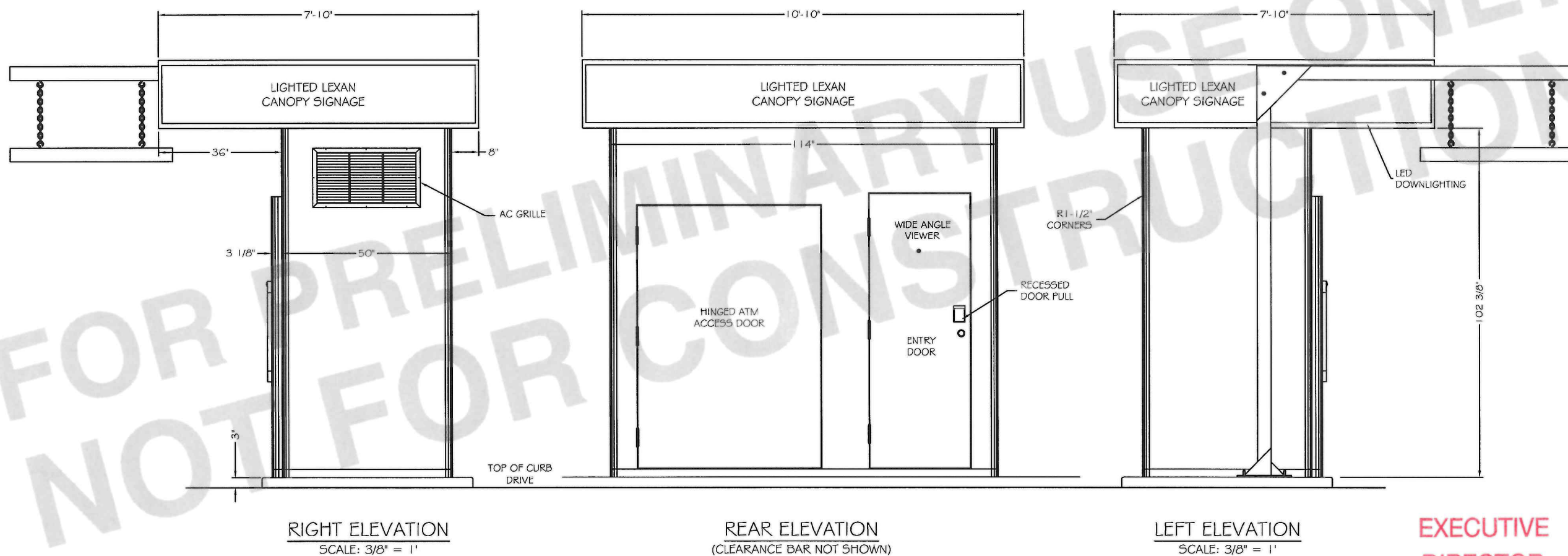
JOB# P-14364 DATE 02/10/21 DWN BB REV

DESIGNED FOR: HOME FEDERAL BANK
ADDRESS:

1
PAGE#

21-48-C

DRAWINGS ARE FOR PRELIMINARY USE ONLY
NOT INTENDED FOR PRODUCTION



EXECUTIVE
DIRECTOR
APPROVAL

5-26-2021
Date By *aa*



HERITAGE
The World Leader in ATM Kiosks

DEALER: QSI, INC.
ADDRESS: 107 SCHULER DRIVE
BARDSTOWN, KY 40004

MODEL#
3200
ATM
NCR 6684 5H

JOB# P-14364 DATE 02/10/21 DWN BB REV
DESIGNED FOR: HOME FEDERAL BANK
ADDRESS:

2
PAGE#

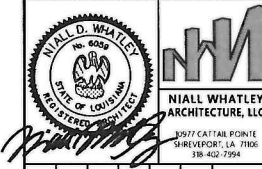
21-48-C

EXECUTIVE
DIRECTOR
APPROVAL

5-24-2021
Date

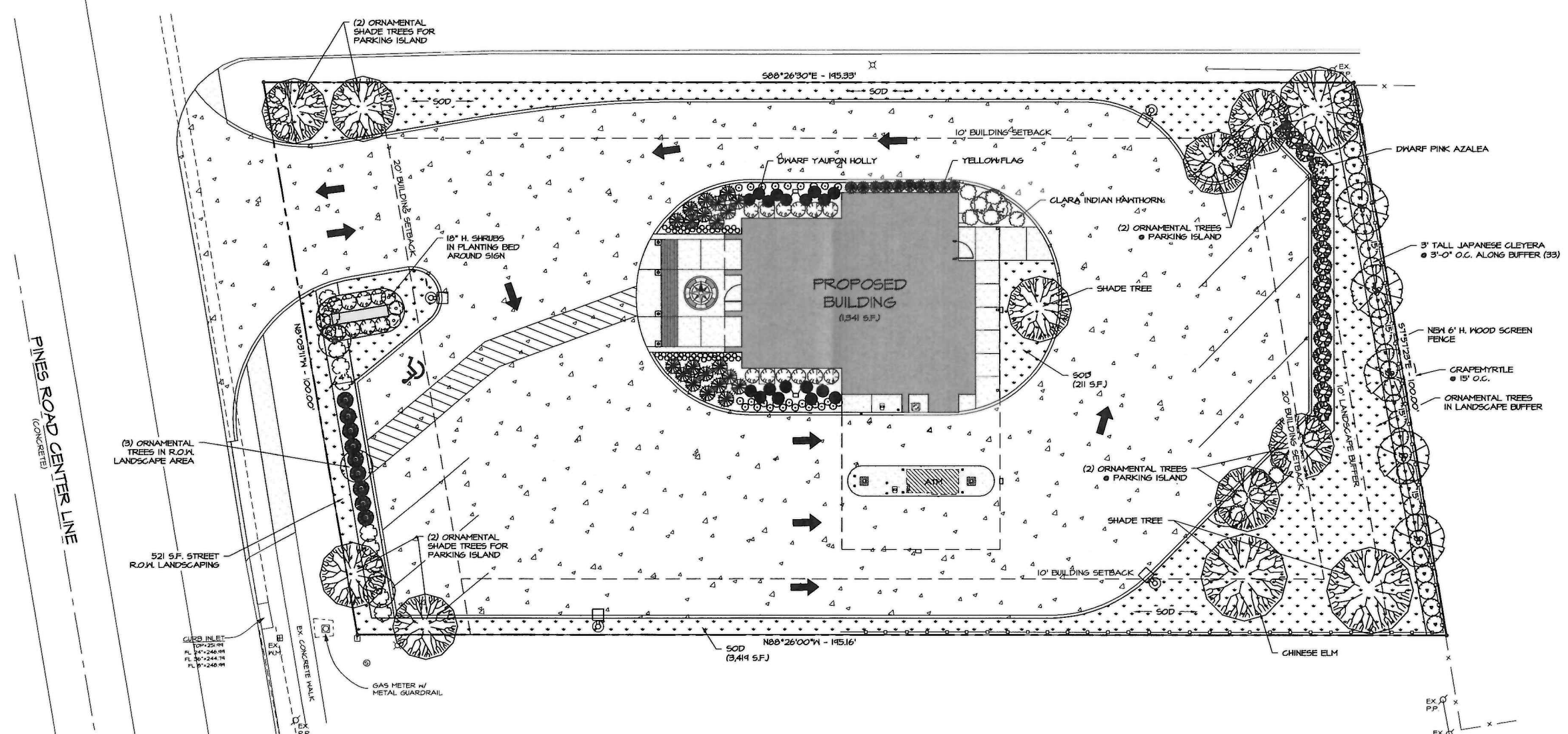
AC
By

Plant Legend				
Symbol	Qty	Common Name	Container	Botanical Name
●	12	Chinese Elm	2'gal.	Ulmus parvifolia 'Drake'
○	25	Clara Indian Hawthorn	3gal.	Rhaphiolepis indica 'Clara'
⊙	5	Crape Myrtle Acoma	6TO B'	Lagerstroemia indica 'Acoma'
●	10	Dwarf Yaupon Holly	3gal.	Ilex vomitoria 'Nana'
⊙	33	Japanese Cleysera	3gal.	Terminalia gymnanthera
●	21	Little Kitten Grass	36AL	Miscanthus sinensis 'Little Kitten'
○	52	SEASONAL COLOR	4"	
⊙	20	Shi Shi Sasanqua	Tgal.	Camellia hiemalis 'Shi Shi Gashira'
⊙	6	Star Magnolia, Bloomed	10gal.	Magnolia stellata
⊙	26	Stella De Oro Daylily	16AL	Hemerocallis 'Stella De Oro'
⊙	12	Texas Sage, Large	3gal.	Leucophyllum frutescens
●	4	Variegated Pittosporum	3gal.	Rosa 'Radaphnik'
●	10	Yellow Flag	16AL	Iris pseudacorus
●	18	dk pink azalea	36AL	Azalea
○	6	sun shine ligustrum	3gal.	



PRELIMINARY						
REVIEW						
BIDDING						
PERMIT						
CONSTRUCTION				X		
DATE: 05-12-21						SET #

THESE DRAWINGS AND DESIGNS ARE THE INSTRUMENTS OF SERVICE FOR NIALL WHITLEY ARCHITECTURE, LLC. IN PRODUING AND TRANSMITTING THESE INSTRUMENTS OF SERVICE, NIALL WHITLEY ARCHITECTURE, LLC IS THE COPYRIGHT OWNER OF THESE DRAWINGS AND DESIGNS. THE DRAWINGS AND DESIGNS ARE SUBMITTED ON THE CONDITION THAT THEY ARE NOT TO BE REPRODUCED, COPIED, OR USED FOR FURNISHING INFORMATION TO OTHERS, WITHOUT THE PERMISSION OF NIALL WHITLEY ARCHITECTURE, LLC.



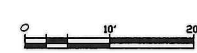
PROPOSED FACILITY FOR:
**Home Federal Bank
Pines Road Branch**
6403 PINES ROAD
SHREVEPORT, LA 71124

LANDSCAPING PLAN

PROJECT #	2141	DATE	
DRAWN BY:	SGB	REVISION:	
CHECKED BY:		CIVIL PLANS	
DRAWN BY:	SGB	ARCH PLANS	
CHECKED BY:		SHEET	C5.1

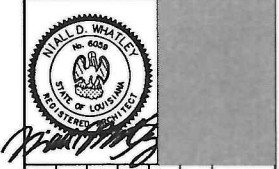
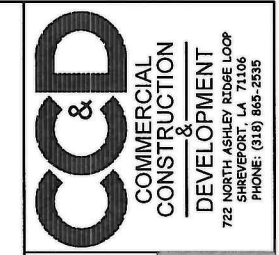


SITE LANDSCAPING PLAN
SCALE: 1"=10'-0"



P:\Home Federal Bank - Pines Road (2021)\Architectural\Department\Drawings\Home Federal Bank - Pines Road-Civil-NDW (05-12-21).dwg, 5/14/2021 11:13:50 AM, srawin

21-48-C



IRRIGATION NOTES

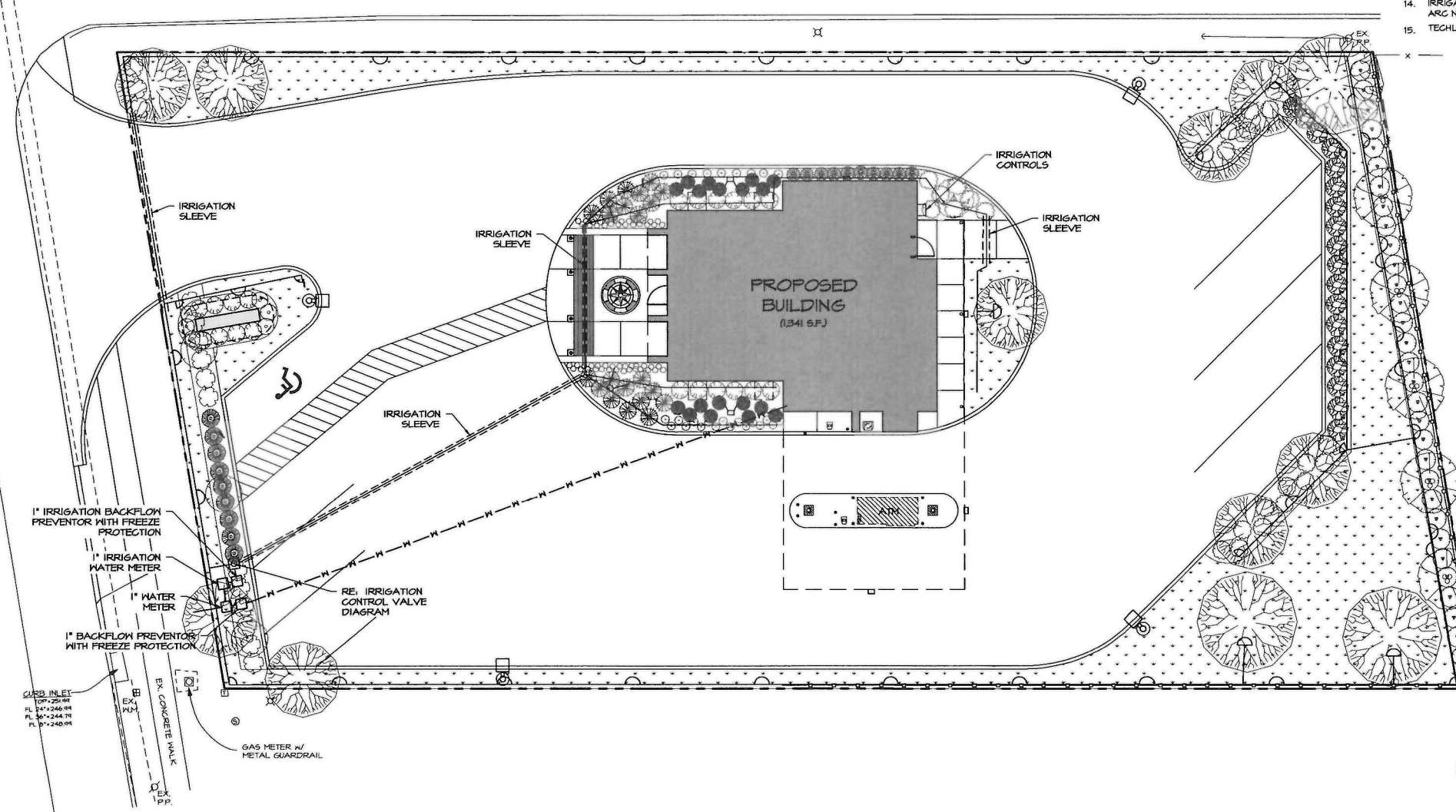
1. LINE LAYOUT IS DIAGRAMMATIC-ADJUST HEAD AND LINE LOCATIONS ON SITE TO ACCOMMODATE EXISTING JOB CONDITIONS AND TO ACHIEVE COMPLETE COVERAGE.
2. ALL MAIN LINE PIPING SHALL BE BURIED TO HAVE A MINIMUM COVER OF 18". ALL LATERAL PIPING DOWNSTREAM OF THE MAIN LINE SHALL BURIED TO HAVE A MINIMUM COVER OF 12".
3. ALL MAINS ARE TO DRAIN TO LOW POINTS AT A MINIMUM ONE HALF(1/2%) PERCENT SLOPE. AT LOW POINTS, INSTALL GATE VALVE TO FACILITATE DRAINAGE OF SYSTEM DURING FREEZING TEMPERATURES.
4. CONTRACTOR SHALL INSTALL AUTOMATIC DRAIN VALVES AT LO POINTS IN THE IRRIGATION LINES AS REQUIRED TO PREVENT FREEZE DAMAGE.
5. ALL VALVE BOXES SHALL BE BLACK IN COLOR(BODY AND LID). SIZES SHALL BE TEN (10") INCHES BY FOURTEEN(14") INCHES (RECTANGULAR) FOR REMOTE CONTROL VALVES AND NINE (9") INCHES (ROUND) FOR GATE AND QUICK COUPLER VALVES.
6. CONTRACTOR SHALL MAKE MINOR ADJUSTMENTS TO SYSTEM LAYOUT IN FIELD TO INSURE POSITIVE DRAINAGE OF LATERAL LINES AND MAIN LINES.
7. CONTRACTOR SHALL NOTIFY THE LANDSCAPE ARCHITECT, IF THE STATIC PRESSURE IS LESS THAN THE DESIGN STATIC PRESSURE OF 65 PSI. PRESSURE REGULATION AT THE SOURCE SHALL BE REQUIRED IF PRESSURE IS GREATER THAN 75 PSI.
8. ALL WIRING FROM THE IRRIGATION CONTROLLER TO THE REMOTE CONTROL VALVES SHALL BE UF-14/1 DIRECT BURIAL CABLE. ALL WIRE SPLICES SHALL BE MADE IN VALVE BOXES ONLY USING RAINBIRD SNAP-TITE CONNECTORS AND SEALANT. PROVIDE SLEEVES FOR WIRE UNDER PAVED AREAS AS REQUIRED.
9. ALL IRRIGATION INSTALLATION SHALL CONFORM TO THE LOCAL CODES AND REGULATIONS.
10. IRRIGATION SYSTEM SHALL BE INSTALLED AND FULLY OPERATIONAL BEFORE LANDSCAPING INSTALLATION.
11. IRRIGATION HEADS SHALL BE PLACED AND ADJUSTED SO AS NOT TO SPRAY ON THE BUILDING.
12. IRRIGATION HEADS SHALL BE PLACED AND SIZED SO AS NOT TO BE SUSCEPTIBLE TO DAMAGE BY AUTOMOBILE OVERHANGS.
13. IRRIGATION CONTRACTOR SHALL PLACE ADJUSTABLE ARC NOZZLES IN PLACE OF FIXED ARC NOZZLE AS NEEDED TO ELIMINATE OVERSPRAY ON TO PAVEMENT.
14. TECHLINE SHALL BE BURIED UNDER MULCH.

PRELIMINARY									
REVIEW									
BIDDING									
PERMIT									
CONSTRUCTION									
DATE:	05-12-21								
SET #									

THESE DRAWINGS AND DESIGNS ARE THE INSTRUMENTS OF SERVICE FOR MALL WHATLEY ARCHITECTURE, LLC. IN PROVIDING AND TRANSMITTING THESE INSTRUMENTS OF SERVICE, MALL WHATLEY ARCHITECTURE, LLC IS THE COPYRIGHT OWNER OF THESE DRAWINGS AND DESIGNS. THE DRAWINGS AND DESIGNS ARE SUBMITTED ON THE CONDITION THAT THEY ARE NOT TO BE REPRODUCED, COPIED, OR COPIED IN WHOLE OR IN PART, OR USED FOR FURNISHING INFORMATION TO OTHERS, WITHOUT THE PERMISSION OF MALL WHATLEY ARCHITECTURE, LLC.

IRRIGATION LEGEND

- ⊕ ⊖ HUNTER ROTOR HEAD PGP SERIES NOZZLE NO. 10 FULL AND PART GRGLE. 6 GPM @ 40 PSI, 40 FT.
- ⊕ ⊖ RAINBIRD POP-UP LOW ANGLE SHRUB SPRAY MPR SERIES NO. 5 FULL, HALF, & QUARTER ON A 1812-SAM-PRS BODY.
- ⊕ ⊖ RAINBIRD POP-UP LOW ANGLE SHRUB SPRAY MPR SERIES NO. 8 FULL, HALF, & QUARTER ON A 1812-SAM-PRS BODY.
- ⊕ ⊖ RAINBIRD POP-UP LOW ANGLE SHRUB SPRAY MPR SERIES NO. 10 FULL, HALF, & QUARTER ON A 1812-SAM-PRS BODY.
- ⊕ ⊖ RAINBIRD POP-UP LOW ANGLE SHRUB SPRAY MPR SERIES NO. 12 FULL, HALF, & QUARTER ON A 1812-SAM-PRS BODY.
- ⊕ ⊖ RAINBIRD POP-UP LOW ANGLE SHRUB SPRAY MPR SERIES NO. 15 FULL, HALF, & QUARTER ON A 1812-SAM-PRS BODY.
- ⊕ ⊖ RAINBIRD POP-UP LAWN SPRAY MPR SERIES NO. 18 VAN FULL, HALF, & QUARTER ON A 1804-SAM-PRS BODY.
- ⊕ RAINBIRD POP-UP SIDE STRIP SPRAY MPR SERIES NO. 15 95T NOZZLE 1812-SAM-PRS BODY.
- ⊕ RAINBIRD POP-UP END STRIP SPRAY MPR SERIES NO. 15 EST NOZZLE 1812-SAM-PRS BODY.
- ⊕ ⊖ RAINBIRD POP-UP LOW ANGLE SHRUB SPRAY MPR SERIES NO. 5 FULL, HALF, & QUARTER ON A 1804-SAM-PRS BODY.
- ⊕ ⊖ RAINBIRD POP-UP LOW ANGLE SHRUB SPRAY MPR SERIES NO. 8 FULL, HALF, & QUARTER ON A 1804-SAM-PRS BODY.
- ⊕ ⊖ RAINBIRD POP-UP LAWN SPRAY MPR SERIES NO.10 FULL, HALF, & QUARTER ON A 1804-SAM-PRS BODY.
- ⊕ ⊖ RAINBIRD POP-UP LAWN SPRAY MPR SERIES NO. 12 FULL, HALF, & QUARTER ON A 1804-SAM-PRS BODY.
- ⊕ ⊖ RAINBIRD POP-UP LAWN SPRAY MPR SERIES NO. 15 FULL, HALF, & QUARTER ON A 1804-SAM-PRS BODY.



EXECUTIVE DIRECTOR APPROVAL
 5-26-2021 Date By *AG*

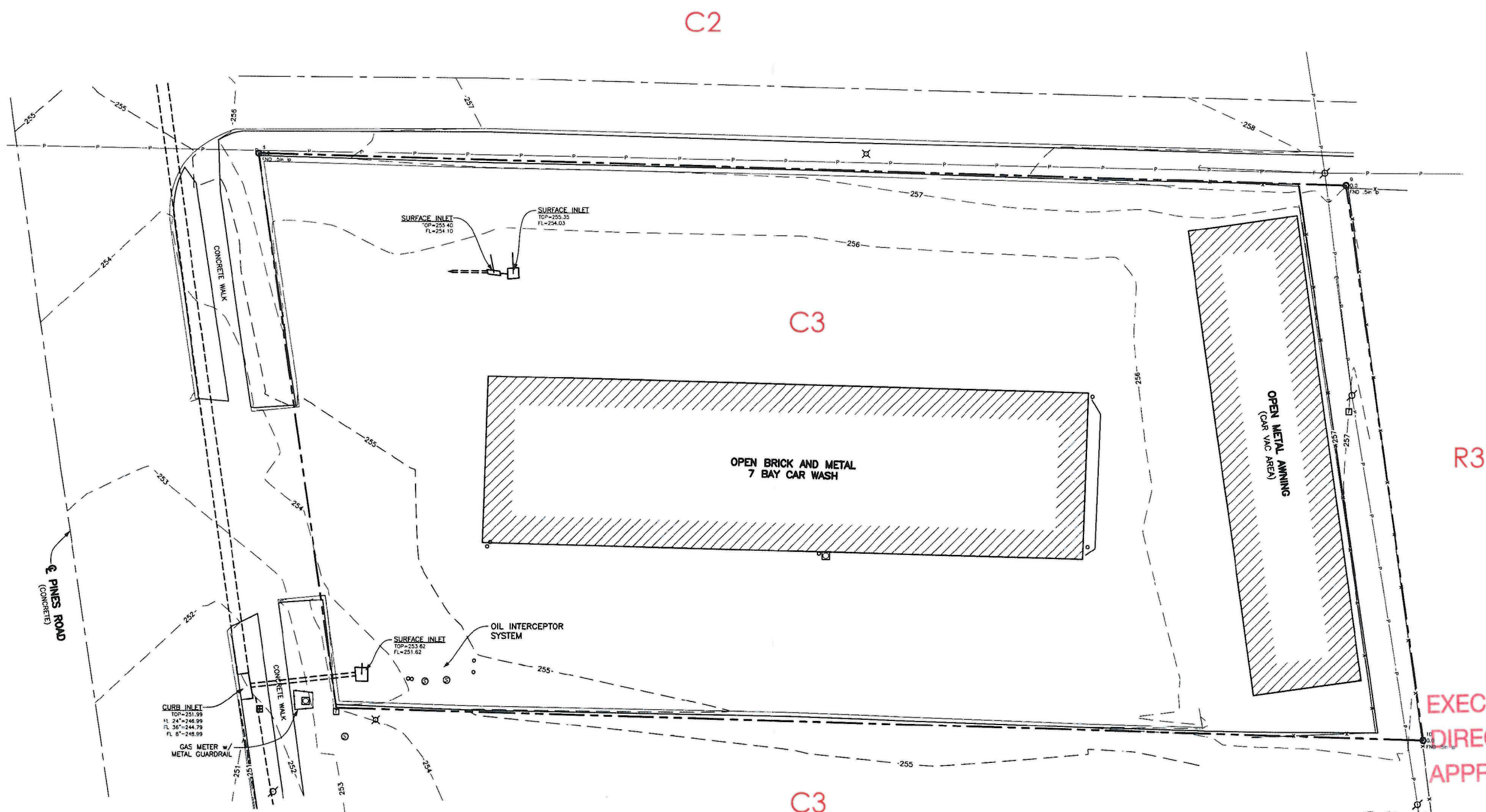
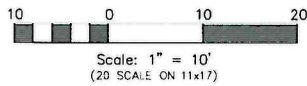
SITE IRRIGATION PLAN
 SCALE: 1"=10'-0"

PROPOSED FACILITY FOR:
Home Federal Bank
Pines Road Branch
 6403 PINES ROAD
 SHREVEPORT, LA 71134

IRRIGATION PLAN

PROJECT #	2191	DATE:	
DRAWN BY:	SGB	REVISION:	
CHECKED BY:			
DRAWN BY:	SGB		
CHECKED BY:			
CIVIL PLANS			
ARCH PLANS			
SHEET	C5.2		

21-48-C



EXECUTIVE
DIRECTOR
APPROVAL

5-26-2021
Date By *CC*

MPC Signature _____

Legal Description of property located at
6903 Pines Road, Shreveport, LA.
A tract of land located in the Southwest Quarter of Section 24, Township 17 North, Range 15 West, Caddo Parish, Louisiana,
said tract more fully described as follows:
From the Southeast corner of said Southwest Quarter of Section 24, Township 17 North, Range 15 West, proceed North
89°34' West along the centerline of West 70th Street a distance of 1223.86 feet, thence run North 0°02' West a distance of
50.0 feet, thence run North 8°51' West a distance of 356.70 feet to the POINT OF BEGINNING of the tract of herein described.
Thence run North 89°21' West a distance of 195.16 feet to the point on the East right-of-way line of Pines Road,
Thence run North 8°52' West along said East right-of-way line of Pines Road a distance of 100.0 feet,
Thence run South 89°21' East a distance of 195.19 feet,
Thence run South 8°51' East a distance of 100.0 feet back to the POINT OF BEGINNING;

LEGEND:

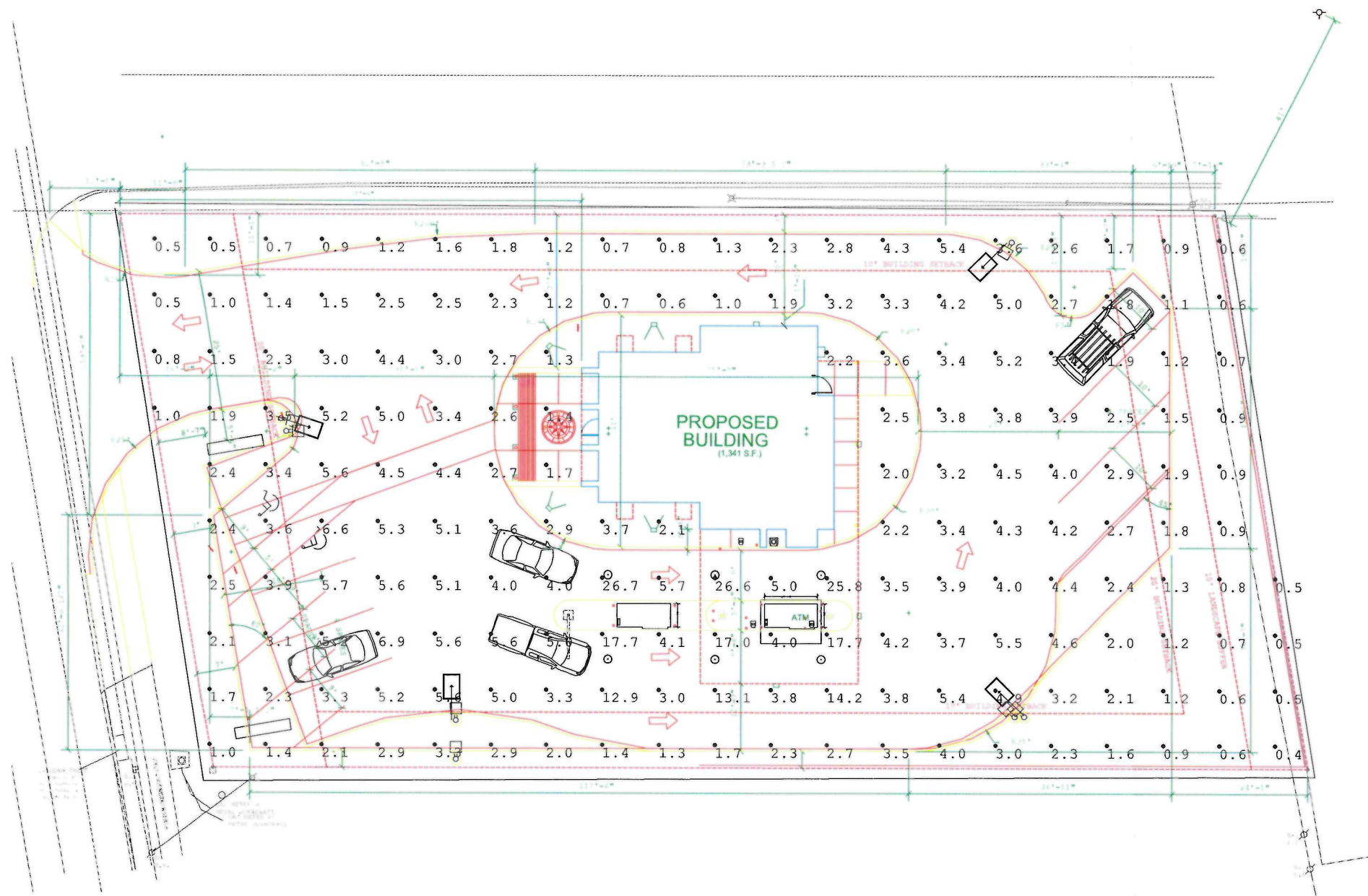
	WATER METER
	POWER POLE w/ GUY ANCHOR
	AREA LIGHT
	TELEPHONE PEDESTAL
	SEWER MANHOLE
	SEWER CLEANOUT

PRELIMINARY
THIS DOCUMENT IS NOT TO BE USED FOR CONSTRUCTION,
BIDDING, RECORDATION, CONVEYANCE, SALES, OR AS THE
BASIS FOR ISSUANCE OF A PERMIT. IT IS INTENDED FOR
CLIENT REVIEW ONLY.
CHARLES C. COYLE, III, P.L.S.
REGISTRATION NO. 4884
COYLE ENGINEERING CO., INC.
(318) 746-8987

TOPOGRAPHIC SURVEY		
6903 PINES ROAD SHREVEPORT, LOUISIANA 71119		
COYLE ENGINEERING CO. INC.		
SCALE: xxxxx	DRAWN BY: xxx	CHECKED BY: xxx
DATE: xxxxx	FIELD BOOK: xxx	PROJECT NO.: xxxxx
3925 BENTON ROAD P.O. BOX 6177 BOSSIER CITY, LOUISIANA 71171-6177 PHONE (318) 746-8987		
SHEET 1 OF 1		

21-48-C

R:\11805A\SURVEY\TOPOGRAPHIC SURVEY\11805A EXHIBIT FOR SEAN DEL 2020-10-23.DWG



Luminaire Schedule

Symbol	Qty	Label	Arrangement	Total Lamp Lumens	LLF	Description
☐	4	OSQ-A-XX-3ME-K-40K-ULXXXXX_CO	SINGLE	N.A.	1.000	OSQ-A-xx-3ME-K-40K-ULxxxxx CONFIGURED FROM OSQ-A-xx-3ME-K-30K-ULxxxxx
⊙	6	S-DL6-42L-27K w S-DL6-W-SS-C	SINGLE	N.A.	1.000	S-DL6-42L-27K w S-DL6-W-SS-C

EXECUTIVE
DIRECTOR
APPROVAL

5-26-2021
Date By *AKH*

21-48-C

OSQ Series

OSQ™ LED Area/Flood Luminaire featuring Cree TrueWhite® Technology – Medium

Rev. Date: V28 04/21/2021

Product Description

The OSQ™ Area/Flood luminaire blends extreme optical control, advanced thermal management and modern, clean aesthetics. Built to last, the housing is rugged cast aluminum with an integral, weathertight LED driver compartment. Versatile mounting configurations offer simple installation. Its slim, low-profile design minimizes wind load requirements and blends seamlessly into the site providing even, quality illumination. The 'B' Input power designator is a suitable upgrade for HID applications up to 250 Watt, and the 'K' Input power designator is a suitable upgrade for HID applications up to 400 Watt.

Applications: Parking lots, walkways, campuses, car dealerships, office complexes, tunnels, underpasses, and internal roadways

Performance Summary

Utilizes Cree TrueWhite® Technology on 5000K Luminaires

NanoOptic® Precision Delivery Grid™ optic

Assembled in the U.S.A. of U.S. and imported parts

Initial Delivered Lumens: Up to 17,291

Efficacy: Up to 136 LPW

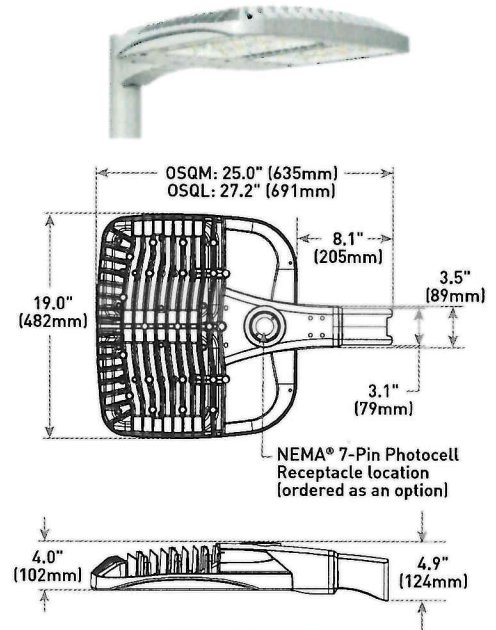
CRI: Minimum 70 CRI (3000K, 4000K & 5700K); 90 CRI (5000K)

CCT: 3000K, 4000K, 5000K, 5700K

Limited Warranty*: 10 years on luminaire; 10 years on Colorfast DeltaGuard® finish; up to 5 years for Synapse® accessories; 1 year on luminaire accessories

* See <http://creeighting.com/warranty> for warranty terms. For Synapse accessories, consult Synapse spec sheets for details on warranty terms.

DA Mount



Weight
28.9 lbs. (13.1kg)

EXECUTIVE
DIRECTOR
APPROVAL

5-24-2021
Date By *A. Cho*

Ordering Information

Fully assembled luminaire is composed of two components that must be ordered separately:

Example: **Mount:** OSQ-B-AASV + **Luminaire:** OSQ-A-NM-2ME-B-40K-UL-SV

Mount (Luminaire must be ordered separately)*	
OSQ-	
OSQ-B-AA Adjustable Arm OSQ-DA Direct Arm OSQ-M-TSP Transportation Mount (stainless steel; do not specify color) OSQ-TM Trunnion Mount	Color Options: SV Silver BK Black BZ Bronze WH White

* Reference EPA and pole configuration suitability data beginning on page 10

Luminaire (Mount must be ordered separately)									
OSQ	A	NM							
Product	Version	Mounting	Optic	Input Power Designator	CCT	Voltage	Color Options	Options	
OSQ	A	NM No Mount	Asymmetric 2ME* 4ME* Type II Type IV Medium Medium 3ME* Type III Medium Symmetric 5ME 25D Type V 25° Flood Medium 40D 55H 40° Flood Type V 60D Short 60° Flood 55Q 120D Type V 120° Flood Square WSN Wide Sign 15D 15° Flood	B 86W 3000K, 70 CRI K 130W 40K 4000K, 70 CRI UH 347-480V - Available with B & K Input Power Designators only Z 53W 50K 5000K, 90 CRI 57K 5700K, 70 CRI	30K 3000K, 70 CRI 40K 4000K, 70 CRI 50K 5000K, 90 CRI 57K 5700K, 70 CRI	UL Universal 120-277V UH Universal 347-480V - Available with B & K Input Power Designators only	BK Black BZ Bronze SV Silver WH White	F Fuse - Compatible only with 120V, 277V or 347V (phase to neutral) - Consult factory if fusing is required for 208V, 240V or 480V (phase to phase) - Refer to PML spec sheet for availability with PML options - When code dictates fusing, use time delay fuse PML Programmable Multi-Level, up to 40' Mounting Height - Refer to PML spec sheet for details - Intended for downlight applications at 0° tilt PML2 Programmable Multi-Level, 10-30' Mounting Height - Refer to PML spec sheet for details - Intended for downlight applications at 0° tilt Q9/Q6/Q5/Q4/Q3/Q2/Q1 Field Adjustable Output - Must select Q9, Q6, Q5, Q4, Q3, Q2, or Q1 - Offers full range adjustability - Refer to pages 12-13 for power and lumen values - Available with B & K Input Power Designators only - Not available with PML or PML2 options	R NEMA® 7-Pin Photocell Receptacle - 7-pin receptacle per ANSI C136.41 - Intended for downlight applications with maximum 45° tilt - Factory connected 0-10V dim leads - 18" (457mm) seven-conductor cord exits luminaire - Requires photocell or shorting cap by others RL Rotate Left - LED and optic are rotated to the left - Refer to RR/RL configuration diagram on page 14 for optic directionality - Not for use with symmetric optics RR Rotate Right - LED and optic are rotated to the right - Refer to RR/RL configuration diagram on page 14 for optic directionality - Not for use with symmetric optics

* Available with Backlight Shield when ordered with field-installed accessory (see table above)



US: creeighting.com (800) 236-6800

Canada: creeighting-canada.com (800) 473-1234

CREE LIGHTING®

21-48-C

Product Specifications

CREE TRUEWHITE® TECHNOLOGY

A revolutionary way to generate high-quality white light, Cree TrueWhite® Technology is a patented approach that delivers an exclusive combination of 90+ CRI, beautiful light characteristics and lifelong color consistency, all while maintaining high luminous efficacy – a true no compromise solution.

CONSTRUCTION & MATERIALS

- Slim, low profile design minimizes wind load requirements
- Luminaire housing is rugged die cast aluminum with an integral, weathertight LED driver compartment and high-performance heat sink
- Convenient interlocking mounting method on direct arm mount. Mounting adaptor is rugged die cast aluminum and mounts to 3" [76mm] or larger square or round pole, secured by two 5/16-18 UNC bolts spaced on 2" [51mm] centers
- Mounting for the adjustable arm mount adaptor is rugged die cast aluminum and mounts to 2" (51mm) IP, 2.375" (60mm) O.D. tenon
- Adjustable arm mount can be adjusted 180° in 2.5° increments
- Transportation mount is constructed of 316 stainless steel and mounts to surface with (4) 3/8" fasteners by others
- Trunnion mount is constructed of A500 and A1011 steel and is adjustable from 0-180° in 15° degree increments. Trunnion mount secures to surface with (1) 3/4" bolt or (2) 1/2" or 3/8" bolts
- Includes 18" [340mm] 18/5 or 16/5 cord exiting the luminaire. When ordered with R option, 18" [340mm] 18/7 or 16/7 cord is provided
- Designed for uplight and downlight applications
- Exclusive Colorfast DeltaGuard® finish features an E-Coat epoxy primer with an ultra-durable powder topcoat, providing excellent resistance to corrosion, ultraviolet degradation and abrasion. Silver, bronze, black, and white are available
- **Weight:** OSQ-DA: 28.9 lbs. (13.1kg); OSQ-B-AA: 28.4 lbs. (12.9kg); OSQ-M-TSP: 42 lbs. (19.1kg); OSQ-TM: 32.6 lbs. (14.8kg)

ELECTRICAL SYSTEM

- **Input Voltage:** 120-277V or 347-480V, 50/60Hz, Class 1 drivers
- **Power Factor:** > 0.9 at full load
- **Total Harmonic Distortion:** < 20% at full load
- Integral 10kV surge suppression protection standard
- When code dictates fusing, a slow blow fuse or type C/D breaker should be used to address inrush current
- Designed with 0-10V dimming capabilities. Controls by others
- Refer to Dimming spec sheet for details
- **Maximum 10V Source Current:** 1.0mA
- **Operating Temperature Range:** -40°C - +40°C [-40°F - +104°F]

REGULATORY & VOLUNTARY QUALIFICATIONS

- cULus Listed
- Suitable for wet locations
- Enclosure rated IP66 per IEC 60529 when ordered without R option
- Consult factory for CE Certified products
- Certified to ANSI C136.31-2001, 3G bridge and overpass vibration standards with AA, DA, TM, and TSP mounts
- ANSI C136.2 10kV surge protection, tested in accordance with IEEE/ANSI C62.41.2
- Meets FCC Part 15, Subpart B, Class A limits for conducted and radiated emissions
- Luminaire and finish endurance tested to withstand 5,000 hours of elevated ambient salt fog conditions as defined in ASTM Standard B 117
- Meets Buy American requirements within ARRA
- DLC and DLC Premium qualified versions available. Some exceptions apply. Please refer to <https://www.designlights.org/search/> for most current information
- RoHS compliant. Consult factory for additional details
- Dark Sky Friendly, IDA Approved when ordered with 30K CCT and direct or transportation mounts only. Please refer to <https://www.darksky.org/our-work/lighting/lighting-for-industry/fsa/fsa-products/> for most current information

CA RESIDENTS WARNING: Cancer and Reproductive Harm – www.p65warnings.ca.gov

Product Specifications

SYNAPSE® SIMPLYSNAP INTELLIGENT CONTROL

The Synapse SimplySNAP platform is a highly intuitive connected lighting solution featuring zone dimming, motion sensing, and daylight harvesting with utility-grade power monitoring and support of up to 1000 nodes per gateway. The system features a reliable and robust self-healing mesh network with a browser-based interface that runs on smartphones, tablets, and PCs. The Twist-Lock Lighting Controller (TL7-B2) and Site Controller (SS450-002) take the OSQ Series to a new performance plateau, providing extreme energy productivity, code compliance and a better light experience.

Electrical Data*							
Input Power Designator	System Watts 120-480V	Total Current (A)					
		120V	208V	240V	277V	347V	480V
B	86	0.73	0.43	0.37	0.32	0.25	0.19
K	130	1.09	0.65	0.56	0.49	0.38	0.28
Z	53**	0.46	0.26	0.22	0.19	N/A	N/A

* Electrical data at 25°C (77°F). Actual wattage may differ by +/- 10% when operating between 120-277V or 347-480V +/- 10%
 ** Available with UL voltage only

OSQ Series Ambient Adjusted Lumen Maintenance ¹						
Ambient	Optic	Initial LMF	25K hr Reported ² LMF	50K hr Reported ² LMF	75K hr Reported ² / Estimated ³ LMF	100K hr Reported ² / Estimated ³ LMF
5°C (41°F)	Asymmetric	1.04	1.03	1.01	0.99 ²	0.97 ²
	Symmetric	1.05	1.05	1.05	1.05 ³	1.05 ³
10°C (50°F)	Asymmetric	1.03	1.02	1.00	0.98 ²	0.96 ²
	Symmetric	1.04	1.03	1.03	1.03 ³	1.03 ³
15°C (59°F)	Asymmetric	1.02	1.01	0.99	0.97 ²	0.95 ²
	Symmetric	1.02	1.02	1.02	1.02 ³	1.02 ³
20°C (68°F)	Asymmetric	1.01	1.00	0.98	0.96 ²	0.94 ²
	Symmetric	1.01	1.01	1.01	1.01 ³	1.01 ³
25°C (77°F)	Asymmetric	1.00	0.99	0.97	0.95 ²	0.93 ²
	Symmetric	1.00	1.00	1.00	1.00 ³	1.00 ³

¹ Lumen maintenance values at 25°C (77°F) are calculated per IES TM-21 based on IES LM-80 report data for the LED package and in-situ luminaire testing. Luminaire ambient temperature factors (LATF) have been applied to all lumen maintenance factors. Please refer to the [Temperature Zone Reference Document](#) for outdoor average nighttime ambient conditions.

² In accordance with IES TM-21, Reported values represent interpolated values based on time durations that are up to 6x the tested duration in the IES LM-80 report for the LED.

³ Estimated values are calculated and represent time durations that exceed the 6x test duration of the LED.

Accessories

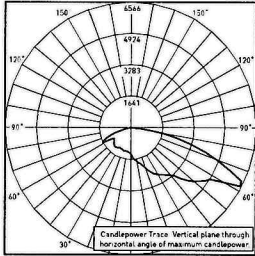
Field-Installed			
Backlight Shield OSQ-BLSMF - Front facing optics OSQ-BLSMR - Rotated optics	Hand-Held Remote XA-SENSREM - For successful implementation of the programmable multi-level option, a minimum of one hand-held remote is required	Bird Spikes OSQ-MED-BRDSPK	Shorting Cap XA-XLSHRT
Synapse Wireless Control Accessories			
Twist-Lock Lighting Controller TL7-B2 - Suitable for 120-277V (UL) voltage only - Requires NEMA/ANSI C136.41 7-Pin Dimming Receptacle - Not for use with PML or PML2 options - Provides On/Off switching, dimming, power metering, digital sensor input, and status monitoring of luminaire - Refer to TL7-B2 spec sheet for details		Synapse Wireless Sensor WSN-DPM - Motion and light sensor - Control multiple zones - Refer to WSN-DPM spec sheet for details	
Twist-Lock Lighting Controller TL7-HVG - Suitable for 120-480V (UL and UH) voltage - Requires NEMA/ANSI C136.41 7-Pin Dimming Receptacle - Not for use with PML or PML2 options - Provides On/Off switching, dimming, power metering, digital sensor input, and status monitoring of luminaire - Refer to TL7-HVG spec sheet for details		SimplySNAP On-Site Controller SS450-002 - Verizon® LTE-enabled - Designed for indoor applications - Refer to SS450-002 spec sheet for details	
SimplySNAP Central Base Station CBSW-450-002 - Includes On-Site Controller (SS450-002) and 5-button switch - Indoor and Outdoor rated - Refer to CBSW-450-002 spec sheet for details		Building Management System (BMS) Gateway BMS-GW-002 - Required for BACnet integration - Refer to BMS-GW-002 spec sheet for details	
Outdoor Antennas [Optional, for increased range, 8dB gain]			
		KIT-ANT420SM - Kit includes antenna, 20' cable and bracket	
		KIT-ANT360 - Kit includes antenna, 30' cable and bracket	
		KIT-ANT600 - Kit includes antenna, 50' cable and bracket - Refer to Outdoor antenna spec sheet for details	

OSQ™ LED Area/Flood Luminaire featuring Cree TrueWhite® Technology – Medium

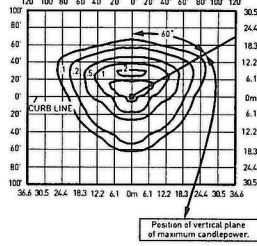
Photometry

All published luminaire photometric testing performed to IES LM-79-08 standards. To obtain an IES file specific to your project consult: <https://creelighting.com/products/outdoor/area/osq-series>

3ME



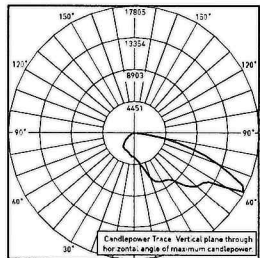
RESTL Test Report #: PL08876-001A
OSQ-A**-3ME-B-30K-UL
Initial Delivered Lumens: 10,421



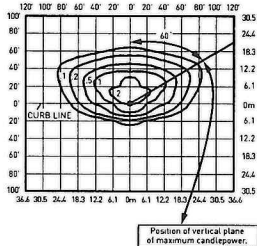
OSQ-A**-3ME-B-40K-UL
Mounting Height: 25' (7.6m) A.F.G.
Initial Delivered Lumens: 11,424
Initial FC at grade

Type III Medium Distribution								
Input Power Designator	3000K (70 CRI)		4000K (70 CRI)		5000K (90 CRI)		5700K (70 CRI)	
	Initial Delivered Lumens*	BUG Ratings** Per TM-15-11	Initial Delivered Lumens*	BUG Ratings** Per TM-15-11	Initial Delivered Lumens*	BUG Ratings** Per TM-15-11	Initial Delivered Lumens*	BUG Ratings** Per TM-15-11
B	10,738	B3 U0 G3	11,424	B3 U0 G3	9,350	B2 U0 G2	11,648	B3 U0 G3
K	16,022	B3 U0 G3	16,959	B3 U0 G3	14,000	B3 U0 G3	17,291	B3 U0 G3
Z	6,481	B2 U0 G2	6,896	B2 U0 G2	5,750	B2 U0 G2	7,031	B2 U0 G2

* Initial delivered lumens at 25°C (77°F). Actual production yield may vary between -10 and +10% of initial delivered lumens
** For more information on the IES BUG (Backlight-Uplight-Glare) Rating visit: <https://www.ies.org/wp-content/uploads/2017/03/TM-15-11BUGRatingsAddendum.pdf> Valid with no tilt



CESTL Test Report #: PL07699-001A
OSQ-A**-3ME-U-57K-UL w/OSQ-BLSLF
Initial Delivered Lumens: 23,601



OSQ-A**-3ME-B-40K-UL w/OSQ-BLSMF
Mounting Height: 25' (7.6m) A.F.G.
Initial Delivered Lumens: 9,019
Initial FC at grade

Type III Medium w/BLS Distribution								
Input Power Designator	3000K (70 CRI)		4000K (70 CRI)		5000K (90 CRI)		5700K (70 CRI)	
	Initial Delivered Lumens*	BUG Ratings** Per TM-15-11	Initial Delivered Lumens*	BUG Ratings** Per TM-15-11	Initial Delivered Lumens*	BUG Ratings** Per TM-15-11	Initial Delivered Lumens*	BUG Ratings** Per TM-15-11
B	8,477	B1 U0 G2	9,019	B1 U0 G2	7,400	B1 U0 G2	9,196	B1 U0 G2
K	12,649	B2 U0 G2	13,389	B2 U0 G2	11,050	B2 U0 G2	13,650	B2 U0 G2
Z	5,117	B1 U0 G1	5,444	B1 U0 G1	4,540	B1 U0 G1	5,551	B1 U0 G1

* Initial delivered lumens at 25°C (77°F). Actual production yield may vary between -10 and +10% of initial delivered lumens
** For more information on the IES BUG (Backlight-Uplight-Glare) Rating visit: <https://www.ies.org/wp-content/uploads/2017/03/TM-15-11BUGRatingsAddendum.pdf> Valid with no tilt

Essentia® Series Downlights

LED Round Downlight – 6"

Rev. Date: V11 08/29/2019

Product Description

The Essentia® Series Downlights deliver beautiful 90+CRI light, with efficacy up to 83 lumens per watt. Available in a variety of lumen packages, color temperatures and beam angles, each downlight is rated at 50,000 hours and features a premium quality self-flanged reflector finish supported by a range of color trim options. Essentia® Series Downlights are engineered to provide outstanding value and performance. It's your essential, comprehensive downlight portfolio for new construction and renovation applications.

Applications: New construction and renovation applications with non-insulated ceilings or where insulation can be kept 3" (76mm) from housing

Performance Summary

Initial Delivered Lumens: 958-6,315 lumens

Input Power: 12-86 watts

CRI: 90

CCT: 2700K, 3000K, 3500K, 4000K

Beam Angles: Narrow, Medium and Wide

Emergency Performance: 90 Minutes minimum

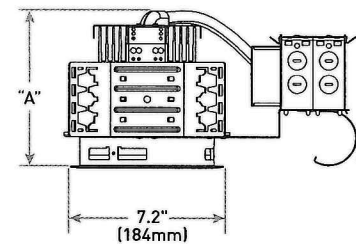
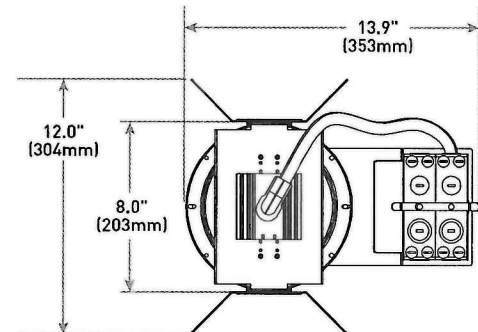
Limited Warranty*: 5 years

Dimming: 0/1-10V dimming down to 1% and Triac dimming down to 10%

Limited Warranty Emergency Back Up (EB) Battery: 1 Year Battery Back Up. Test regularly in accordance with local codes

ENERGY STAR® Certified

*See <http://creelighting.com/warranty> for warranty terms



Accessories

Field-Installed	
C-Channel Hanger Bars RBH30C - Pair of 30" (762mm) rigid 3/4" x 1/2" (19mm x 13mm) c-channel bars RBH24C-1 - Pair of 24" (610mm) rigid 1-1/2" (38mm) x 1/2" (13mm) c-channel bars T-Bar Clips RARC7 - Set of four - For use with RBH24C-1 hanger bars	Wireless 0-10V Dimming/Switching Interface with SmartCast® Technology CIF-10V-CWC-SNSR - For use with luminaires with 10V controls when integral SmartCast isn't available - Maximum four luminaires per SmartCast 10V Interface SmartCast® Technology Configuration Tool CCT-CWC-1 - One required per project when CIF-10V-CWC-SNSR is selected

Ordering Information

Fully assembled luminaire is composed of two components that must be ordered separately:

Example: **Trim:** S-DL6T-N-SSC + **Housing:** S-DL6-11L-27K

Trim (Housing must be ordered separately)				
Product	Beam	Finish	Reflector	Flange Color
S-DL6T	N Narrow M Medium W Wide	SS Semi-Specular P Painted (For White Color)	C Clear CG Champagne Gold W** White B Black	Blank Matching Flange WF*** White Flange

Initial Delivered Lumens	Dim "A"
11L, 15L, 24L	6.8" (172mm)
34L	6.8" (173mm)
42L	7.3" (186mm)
50L, 63L	9.7" (247mm)
75L	9.8" (248mm)
84L	10.5" (268mm)

Housing (Trim must be ordered separately)							
Product	Size	Initial Delivered Lumens*		CCT	Voltage	Controls	Options
S-DL6							
S-DL6 Essentia Series Downlight	6 6" (152mm)	11L 12W, 958 lumens 15L 15W, 1,125 lumens 24L 23W, 1,786 lumens 34L 34W, 2,678 lumens 42L 42W, 3,311 lumens	50L 49W, 3,887 lumens 63L 57W, 4,715 lumens 75L 72W, 5,701 lumens 84L 86W, 6,315 lumens	27K 2700K 30K 3000K 35K 3500K 40K 4000K	Blank Universal 120-277 Volt - Available on 11L-42L only - Must specify voltage for 50L-84L 120V 120V for 50L-84L 277V 277V for 50L-84L	Blank 0/1-10V and Triac Dimming	EB Emergency Backup

* Initial delivered lumens at 4000K. Actual production yield may vary between -10 and +10% of initial delivered lumens

** Requires "P" Painted finish

*** Required when "W" Reflector is ordered, example: S-DL6T-N-PW-WF; available with all reflectors



US: creelighting.com (800) 236-6800

Canada: creelighting-canada.com (800) 473-1234

CREE LIGHTING

21-48-C

Essentia® Series Downlights Round Downlight – 6"

Product Specifications

CONSTRUCTION & MATERIALS

- Semi-specular clear reflector/flange finish, standard
- Multiple reflector/flange colors available
- Light engine, optics and driver accessible from below ceiling
- Heavy-gauge formed steel housing
- Mounting brackets are adjustable from above or below the ceiling
- Ten 1/2" (13mm) and two 3/4" (19mm) knockouts with pry-outs
- Eight knockouts with Romex® cable clamp
- **Max. Ceiling Thickness:** 1-3/8" (35mm)

ELECTRICAL SYSTEM

- **Power Factor:** > 0.9
- **Total Harmonic Distortion:** < 20% at full load
- **Input Voltage:** 120-277V, 50/60Hz
- **Operating Temperature Range:** 0°C - +35°C (32°F - +95°F); 0°C - +30°C (32°F - +86°F) w/EB option

CONTROLS

- Triac dimming down to 10%
- 0/1-10V dimming down to 1% with 0-10V DC control protocol
- **10V Source Current:** 1.00mA
- 0-10V dimming control must be Class 2 and either have a neutral connection or be suitable for use with LED luminaires
- Reference [dimming spec sheet](#) for recommended dimming controls

REGULATORY & VOLUNTARY QUALIFICATIONS

- cULus Listed
- Suitable for damp locations
- Designed for indoor use only
- Suitable for thru-wiring 8#12AWG-90°C
- Thermally protected Type NON-IC in accordance with Article 410 of the NEC and UL 1598
- 75L and 84L versions require marked spacing: 48" (1219mm) x 24" (610mm) x 3" (76mm). 48" (1219mm) luminaire to luminaire, 24" (610mm) luminaire to side wall, 3" (76mm) above luminaire
- Meets FCC Part 15, Subpart B, Class A limits for conducted and radiated emissions
- RoHS compliant. Consult factory for additional details
- ENERGY STAR® certified. Please refer to <https://www.energystar.gov/productfinder/product/certified-light-fixtures/results> for most current information
- **UL924 (EB option).** Maximum mounting height: 1L - 36.1' (11.0m); 15L - 41.2' (12.5m); 24L - 37.2' (11.3m); 34L - 40.7' (12.4m); 42L - 40.2' (12.2m); 50L - 31.6' (9.6m); 63L - 34.5' (10.5m); 75L - 32.4' (9.8m); 84L - 34.8' (10.6m)

CA RESIDENTS WARNING: Cancer and Reproductive Harm - www.p65warnings.ca.gov

Electrical Data*					
Initial Delivered Lumens	System Watts 120-277V	Total Current (A)			
		120V	208V	240V	277V
11L	12	0.10	0.06	0.05	0.04
15L	15	0.12	0.07	0.06	0.05
24L	23	0.19	0.11	0.10	0.08
34L	34	0.28	0.16	0.14	0.12
42L	42	0.35	0.20	0.18	0.15
50L	49	0.40	0.23	0.20	0.17
63L	57	0.47	0.27	0.23	0.20
75L	72	0.60	0.35	0.30	0.26
84L	86	0.70	0.40	0.35	0.30

* Electrical data at 25°C (77°F). Actual wattage may differ by +/- 10% when operating between 120-277V +/- 10%

Essentia® Series Downlights Ambient Adjusted Lumen Maintenance ¹					
Ambient	Initial LMF	25K hr Reported ² LMF	50K hr Estimated ³ LMF	75K hr Estimated ³ LMF	100K hr Estimated ³ LMF
25°C (77°F)	1.00	0.94	0.89	0.84	0.80

¹ Lumen maintenance values at 25°C (77°F) are calculated per IES TM-21 based on IES LM-80 report data for the LED package and in-situ luminaire testing. Luminaire ambient temperature factors (LATF) have been applied to all lumen maintenance factors.

² In accordance with IES TM-21, Reported values represent interpolated values based on time durations that are up to 6x the tested duration in the IES LM-80 report for the LED.

³ Estimated values are calculated and represent time durations that exceed the 6x test duration of the LED.

CCT Multiplier (90CRI)			
2700K	3000K	3500K	4000K
0.87	0.93	0.93	1.00

EXECUTIVE
DIRECTOR
APPROVAL

5-26-2021
Date

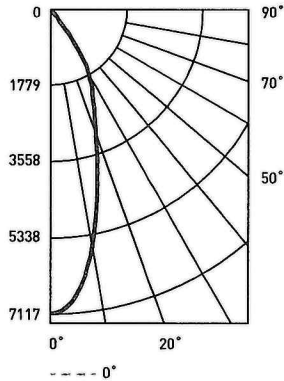
Ar. Clark
By

Essentia® Series Downlights Round Downlight – 6”

Photometry

DL6-42L-40K + S-DL6T-M-SSC BASED ON CESTL REPORT TEST #: PL08067-001

Luminaire photometry has been conducted in accordance with IESNA LM-79-08. IESNA LM-79-08 specifies the entire luminaire as the source resulting in a luminaire efficiency of 100%.



Initial Delivered Lumens: 3,469
Efficacy: 81.0 LPW
S/M: 0.56
Beam Angle: 34.7°

Coefficients Of Utilization – Zonal Cavity Method				
RC %:	80			
RW %:	70	50	30	10
RCR: 0	119	119	119	119
1	114	111	109	107
2	109	105	101	98
3	104	99	94	90
4	100	93	88	84
5	95	88	83	79
6	91	83	78	74
7	87	79	74	70
8	84	75	70	66
9	80	72	67	63
10	77	69	63	60

Effective Floor Cavity Reflectance: 20%

Average Luminance Table (cd/m ²)			
Vertical Angle	Horizontal Angle		
	0°	45°	90°
45°	7,000	7,000	7,000
55°	1,562	1,562	1,562
65°	591	591	591
75°	537	537	537
85°	503	503	503

Zonal Lumen Summary			
Zone	Lumens	% Lamp	Luminaire
0-30	2,802	N/A	80.8%
0-40	3,364	N/A	97.0%
0-60	3,460	N/A	99.8%
0-90	3,469	N/A	100%
0-180	3,469	N/A	100%

Cone of Light		
Distance from Workplane	Footcandles	Beam Diameter
6' (1.8m)	203	3.4' (1.0m)
8' (2.4m)	114	4.5' (1.4m)
10' (3.0m)	78	5.3' (1.6m)
12' (3.7m)	51	6.7' (2.0m)
14' (4.3m)	37	7.9' (2.4m)

Reference <http://creelighting.com/products/indoor/new-construction-downlights/essentia-series-downlights> for detailed photometric data

Application Reference

Open Space					
Spacing	Lumens	Wattage	LPW	w/ft ²	Average FC
4 x 4	3,311	42	79	2.58	211
6 x 6				1.20	99
8 x 8				0.65	53
10 x 10				0.43	35

10' Ceiling, 80/50/20 Reflectances, 2.5 workplane. LLF: 1.0 Initial. Open Space: 50' x 40'

Corridor					
Spacing	Lumens	Wattage	LPW	w/ft ²	Average FC
4' on Center	3,311	42	79	1.79	111
6' on Center				1.22	75
8' on Center				0.86	53
10' on Center				0.72	44

10' Ceiling, 80/20/50 Reflectances, LLF: 1.0 Initial, 2.5' Workplane. Corridor: 6' Wide x 100' Long

Beam Angles

Initial Delivered Lumens	Beam Angle		
	N	M	W
11L-24L	15°	25°	45°
34L-84L	25°	40°	55°

© 2019 Cree Lighting, A company of IDEAL INDUSTRIES. All rights reserved. For informational purposes only. Content is subject to change. Patent www.creelighting.com/patents. Essentia® and SmartCast® are registered trademarks of Cree Lighting, A company of IDEAL INDUSTRIES. Cree® and the Cree logo are registered trademarks of Cree, Inc. The UL logo is a registered trademark of UL LLC. Romex® is a registered trademark of Southwire Company, LLC. ENERGY STAR® and the ENERGY STAR logo are registered trademarks of the U.S. Environmental Protection Agency.

US: creelighting.com (800) 236-6800

Canada: creelighting-canada.com (800) 473-1234

CREE  **LIGHTING**

A COMPANY OF IDEAL INDUSTRIES, INC.