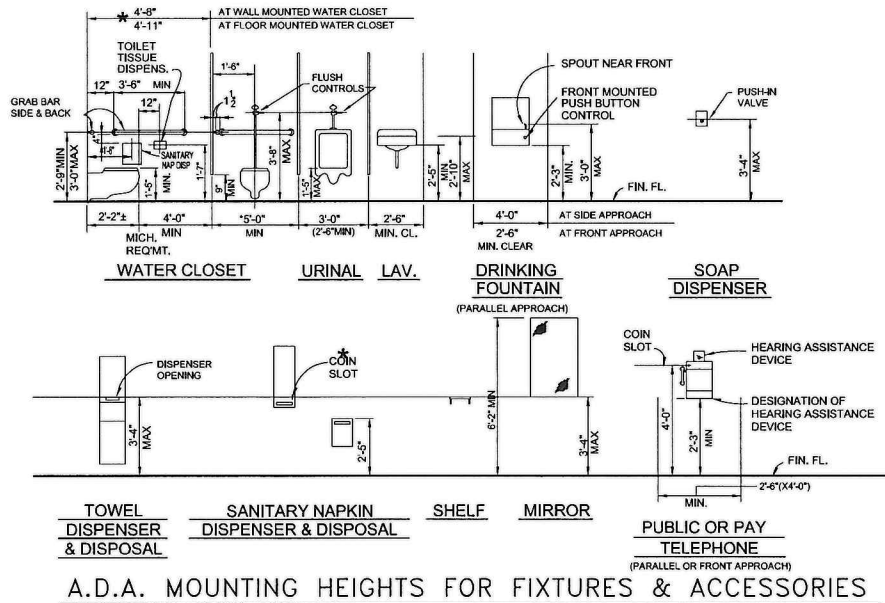
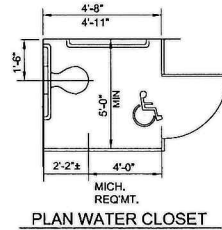


COLOR SCHEDULE

NO.	TYPE	COLOR	REMARKS
BB	BASE BOARD	SILK - 129	
SC	STAIN CONCRETE	VINTAGE UMBER	WOOD BASE TO MATCH - IUC2 - "OFF WHITE"
TC	TRIM COLOR	RED MAHOGANY - SATIN	MILLWORK, DOOR, CASED OPENINGS
VCT 1	VCT #1	ARMSTRONG SANDRIFT WHITE 51858	
VCT 2	VCT #2	ARMSTRONG SANDRIFT WHITE 51858	HAVING A PATTERN "ARMSTRONG" TEA GARDEN GREEN 51872 / MADAGASCAR CINNAMON 59232 / HONEY 5924
WL	WOOD LAM	SHAW UMBER OAK 734	WOOD BASE TO MATCH "SILK - 129"
WT	T.B.D.	T.B.D.	FRONT OF THE RECEPTION COUNTER
GR	GRANITE	2CM TYPHOON BORDEAUX	RECEPTION / RECEPTION HC / NURSE STATION (1/2 BULL NOSE) "UPPER 12 ONLY"
PT 1	PAINT	SW 6142	
PT 3	PAINT	SW 0007	"ACCENT WALL" EXTERIOR WALL"
PT 5	PAINT	SW 0008	"ACCENT WALL" LAB WALL
PT 6	PAINT	SW 7741	
PT 9	PAINT	SW 9138	"ACCENT WALL" EXTERIOR WALL"
PT 10	PAINT	SW 6212	"ACCENT WALL" EXTERIOR WALL"
PT 12	PAINT	SW 6497	
ST 1	STUCCO	SW 7042 SHOJI WHITE	WALLS AND HARDI LAP SIDING
ST 2	STUCCO	SW 7048 URBANE BRONZE	BANDS AND COLUMNS

ROOM SCHEDULE

ROOM	WALL	ACCENT WALL	FLOOR
LOBBY / RECEPTION	PT 1		SC
KIDS LOBBY	PT 1		SC
LOBBY REST ROOM	PT 1		SC
REST ROOMS	PT 1		SC
BREAK ROOM	PT 1		SC
LAB	PT 1		SC
NURSE STATION	PT 1	PT5	SC
X - RAY	PT 1		SC
HALLWAYS	PT 1		SC
EXAM #1 "PEDI ROOM"	PT12		SC
EXAM #2	PT 1	PT9	SC
EXAM #3	PT 1	PT3	SC
EXAM #4	PT6		SC
EXAM #5	PT 1	PT10	SC
OFFICE'S	PT 1		SC

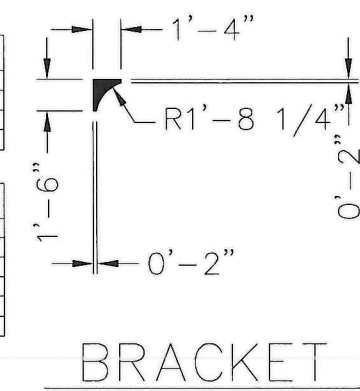


WINDOW SCHEDULE

NO.	TYPE	WINDOW SIZE	GLAZING	FRAME	REMARKS
		WD. HT.			
A		9' 9'	INSULATED	BRONZE METAL	STORE FRONT
B		3' 5'	INSULATED	BRONZE METAL	STORE FRONT

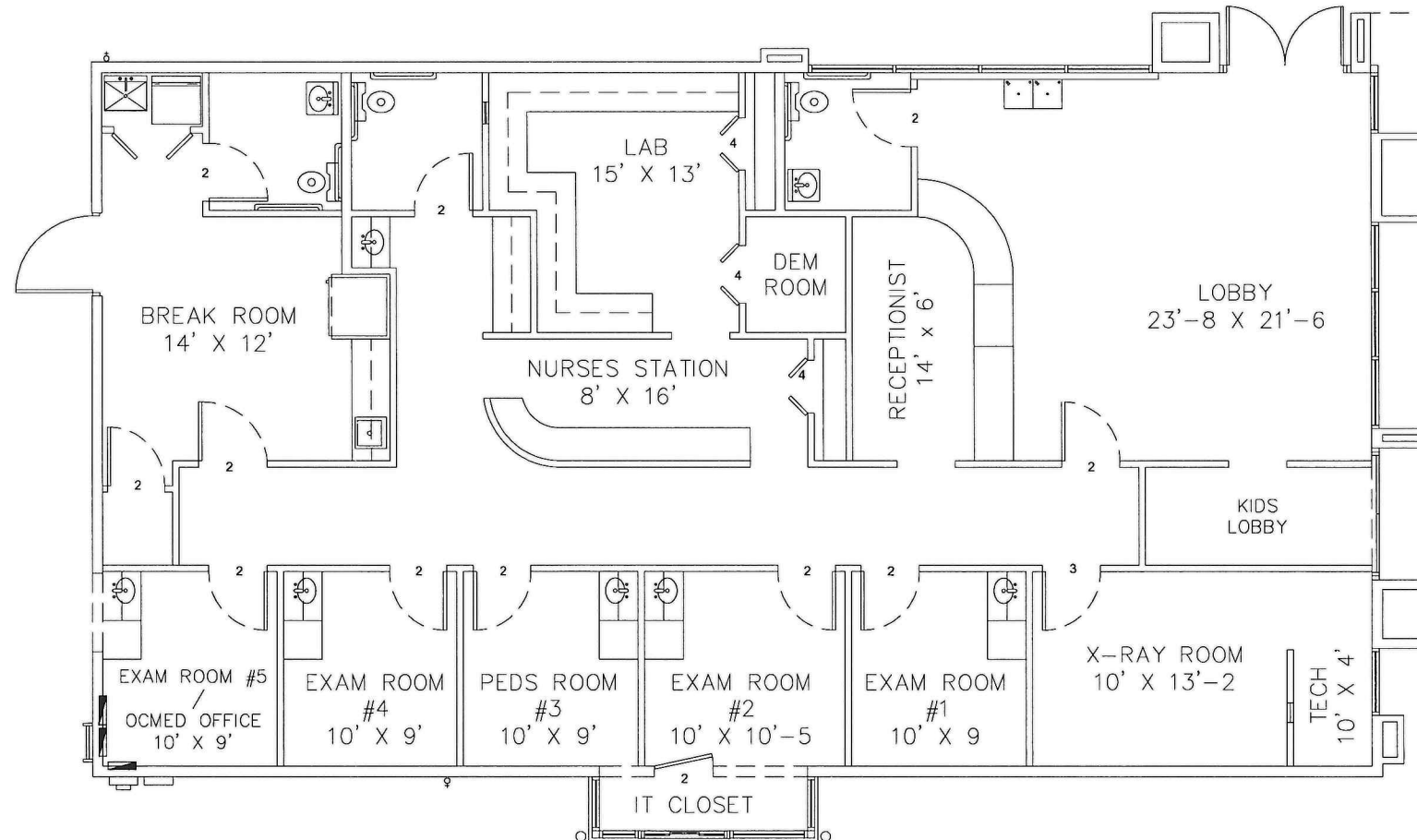
DOOR SCHEDULE

NO.	TYPE	DOOR SIZE	THK.	MATERIAL	FRAME	REMARKS
		WD. HT.				
1		3' 7'		METAL	METAL	HOLLOW METAL DOOR
2		3' 7'	1-3/4"	WOOD	WOOD	FLAT PANEL W/LEVER HANDLE LOCKS
3		3' 7'	1-3/4"	WOOD	METAL	FLAT PANEL W/LEVER HANDLE LOCKS / LED LINED
4		4' 7'	1-3/4"	WOOD	WOOD	PAIR 2' FLAT PANEL W/LEVER HANDLE LOCKS

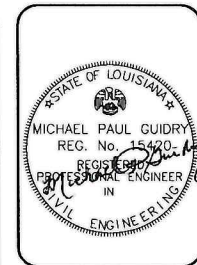


**EXECUTIVE
DIRECTOR
APPROVAL**

5.10.2021 ACK
Date By



FLOOR PLAN (2,454 SQ FT)
SCALE: 1/8" = 1'-0" (12X18)



MICHAEL P. GUIDRY, INC.
CONSULTING ENGINEERS
201 HEYMANN BLVD. #30E LAFAYETTE, LA 70503

NEW CLINIC FOR
SOUTH STAR URGENT CARE - SHREVEPORT
9525 MANSFIELD ROAD
SHREVEPORT, LA 71118

PROJECT NO. _____
DRAWN BY: MPG
DATE: 3-19-2021
REVISED: _____

A-1
SHEET 2 OF 6

21-67-C

CODE

LEGAL JURISDICTION: CITY OF SHREVEPORT CADDO PARISH, LOUISIANA

APPLICABLE CODES

BUILDING CODE AND RELATED EXCERPTS OF THE MUNICIPAL
 2014 ELECTRICAL CODE NATIONAL ELECTRICAL CODE
 2015 BUILDING CODE INTERNATIONAL BUILDING CODE
 2012 LIFE SAFETY CODE NFPA 101- LIFE SAFETY CODE
 2015 MECHANICAL CODE INTERNATIONAL MECHANICAL CODE
 2012 FIRE CODE INTERNATIONAL FIRE CODE
 2015 PLUMBING CODE INTERNATIONAL PLUMBING CODE
 2016 ENERGY CODE INTERNATIONAL ENERGY CONSERVATION CODE
 2012 ADA CODE ADA STANDARDS FOR ACCESSIBLE DESIGN

OCCUPANCY GROUP:

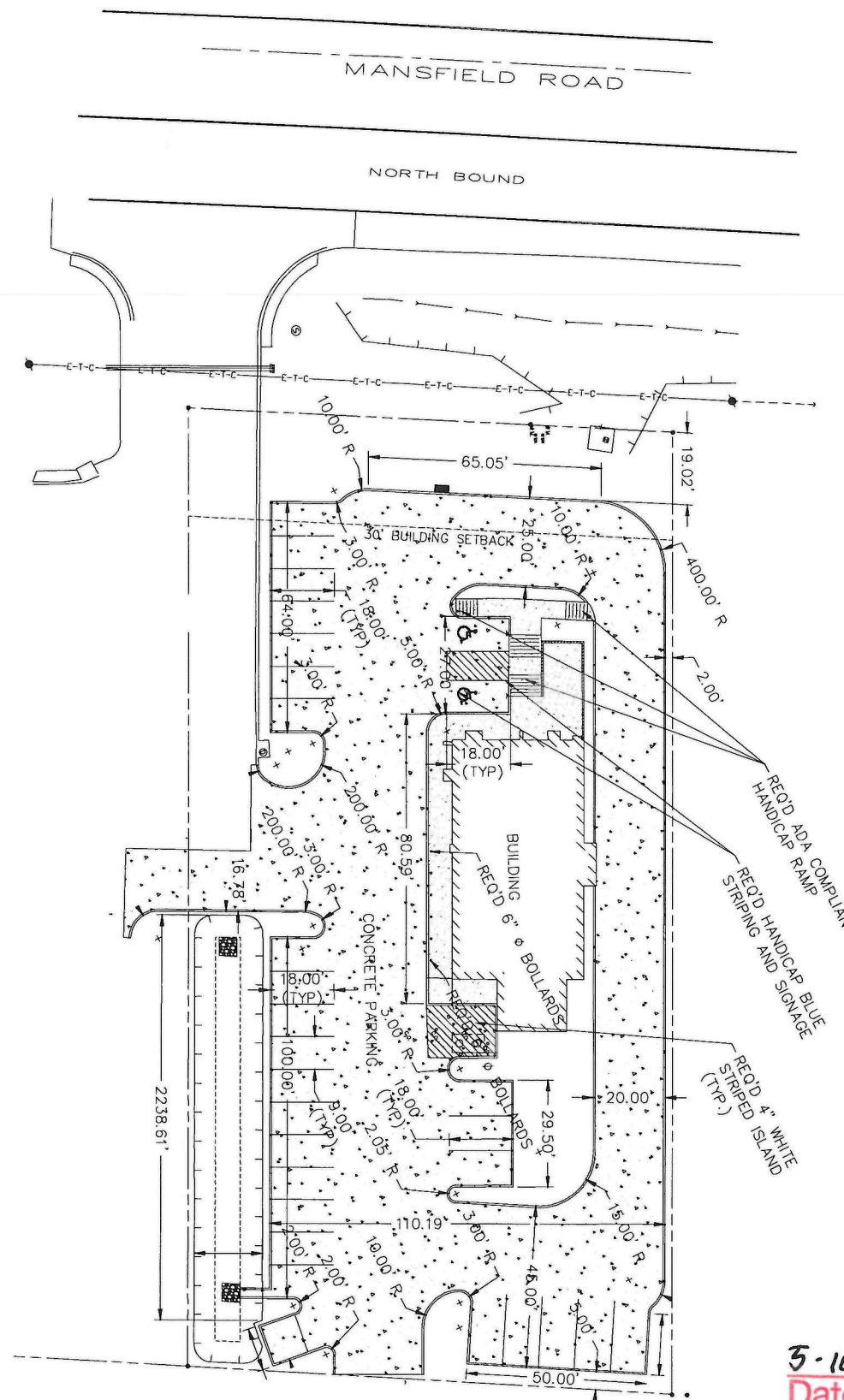
OCCUPANCY TYPE: B
 CONSTRUCTION TYPE: VB

BUILDING SQUARE FOOTAGE: 2,454 SQ FT

ZONING: COMMERCIAL GENERAL

FIRE PROTECTION:

FIRE SPRINKLERS: NO FIRE SPRINKLERS REQUIRED
 FIRE ALARM: NO FIRE ALARM REQUIRED



**EXECUTIVE
 DIRECTOR
 APPROVAL**

5-10-2024 Date *MPG* By

EXISTING SITE PLAN TO REMAIN AS IS

SCALE: 1" = 20'-0" (24X36)
 SCALE: 1" = 40'-0" (12X18)

DRAWING LEDGER		
DRAWING NO.	SHEET NO.	DRAWING DESCRIPTION
S-1	1	SITE PLAN
A-1	2	FLOOR PLAN / SCHEDULES / ADA
A-2	3	ELEVATIONS
P-1	4	PLUMBING PLAN & RISER DIAGRAM
M-1	5	HVAC
E-1	6	ELECTRICAL POWER PLAN / LIGHTING PLAN



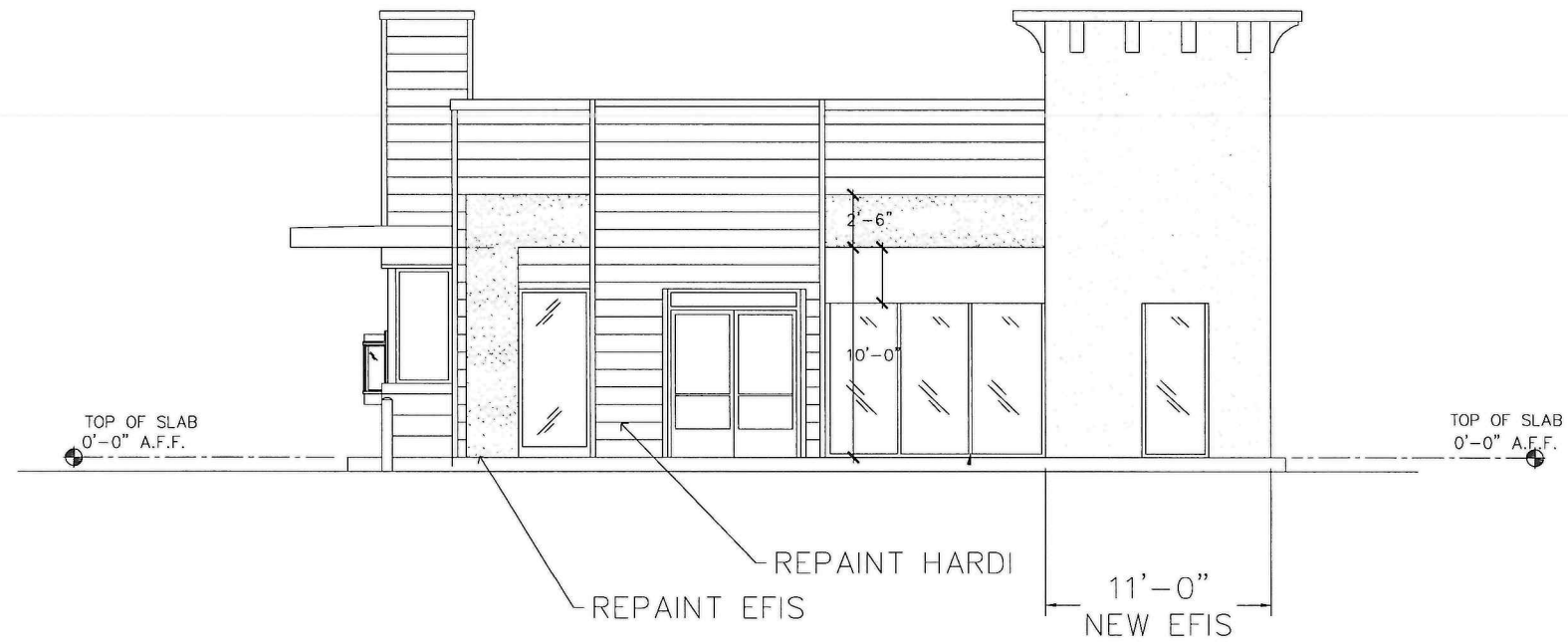
MICHAEL P. GUIDRY, INC.
 CONSULTING ENGINEERS
 201 HEYMANN BLVD. #30E LAFAYETTE, LA 70503

NEW CLINIC FOR
 SOUTH START URGENT CARE - SHREVEPORT
 9525 MANSFIELD ROAD
 SHREVEPORT, LA 71118

PROJECT NO. _____
 DRAWN BY: MPG
 DATE: 3-19-2021
 REVISED: _____

S-1
 SHEET 1 OF 6

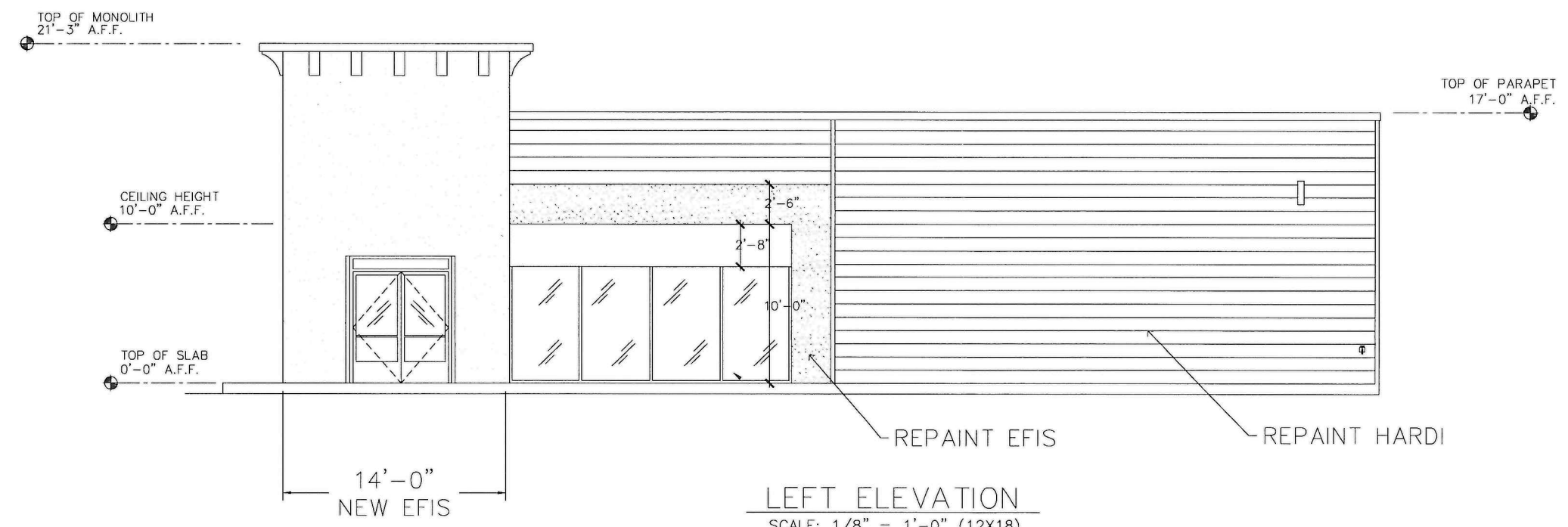
21-67-C



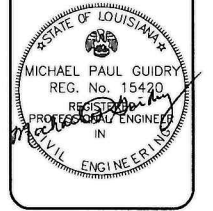
FRONT ELEVATION
SCALE: 1/8" = 1'-0" (12X18)

EXECUTIVE
DIRECTOR
APPROVAL

5-10-2021
Date By *MPG*



LEFT ELEVATION
SCALE: 1/8" = 1'-0" (12X18)



MICHAEL P. GUIDRY, INC.
CONSULTING ENGINEERS
201 HEYMANN BLVD. #30E LAFAYETTE, LA 70503

NEW CLINIC FOR
SOUTH STAR URGENT CARE - SHREVEPORT
9525 MANSFIELD ROAD
SHREVEPORT, LA 71118

PROJECT NO.	
DRAWN BY	MPG
DATE	3-19-2021
REVISED	

A-2
SHEET 3 OF 6

21-67-C