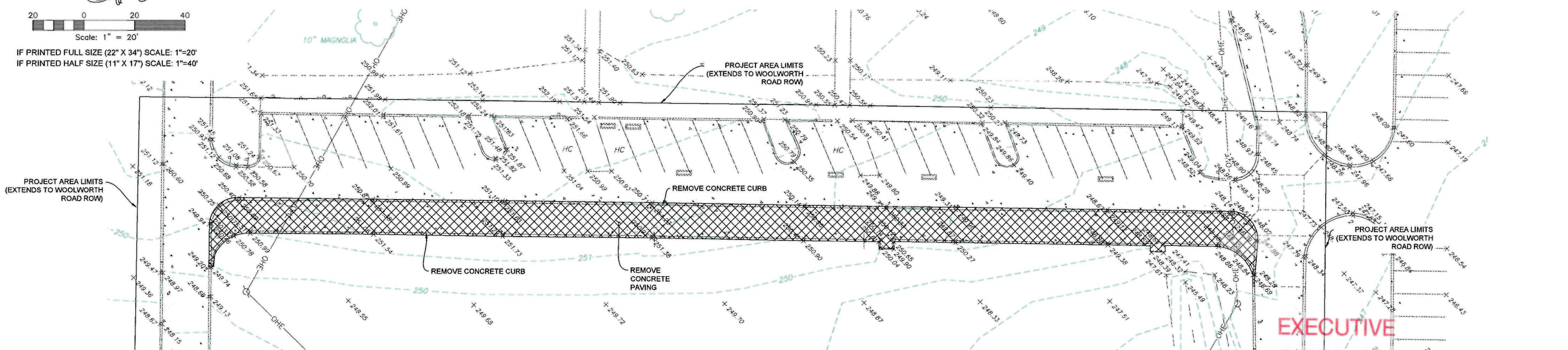


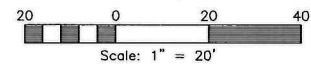
IF PRINTED FULL SIZE (22" X 34") SCALE: 1"=20'
IF PRINTED HALF SIZE (11" X 17") SCALE: 1"=40'



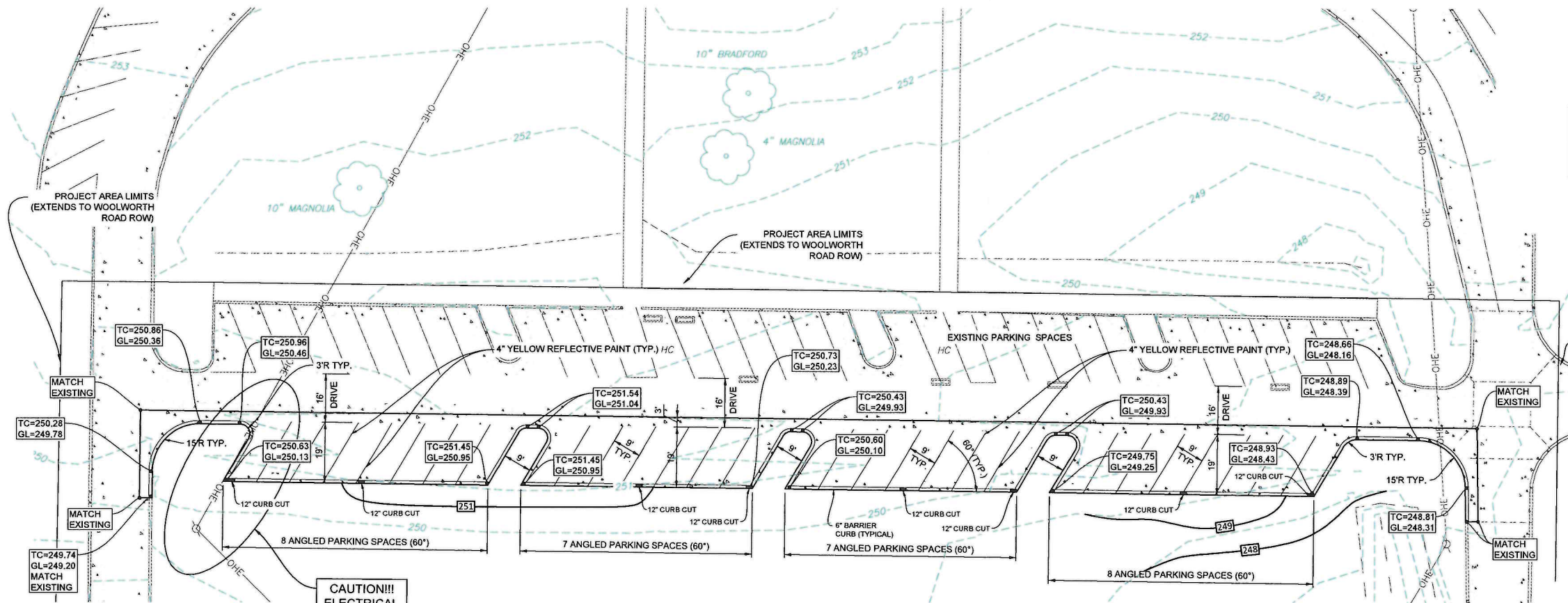
**ADDITIVE ALTERNATE NO. 1
EXISTING CONDITIONS AND DEMOLITION**
1"=20'

**EXECUTIVE
DIRECTOR
APPROVAL**

5-4-2021 Date By *[Signature]*



IF PRINTED FULL SIZE (22" X 34") SCALE: 1"=20'
IF PRINTED HALF SIZE (11" X 17") SCALE: 1"=40'



EXISTING PAVEMENT TO BE REMOVED -	5868 SF
PROPOSED CONCRETE PAVEMENT -	7887 SF
TOTAL ADDITIONAL PAVEMENT (IMPERVIOUS) -	2019 SF*

* LESS THAN 2500 SF
STORMWATER DETENTION NOT REQUIRED

**EXISTING CONDITION AND PAVEMENT PLAN
ADDITIVE ALTERNATE NO. 1**

WALNUT HILL MIDDLE SCHOOL
CADDO PARISH SCHOOL BOARD
9360 WOOLWORTH RD.
SHREVEPORT, CADDO PARISH, LA

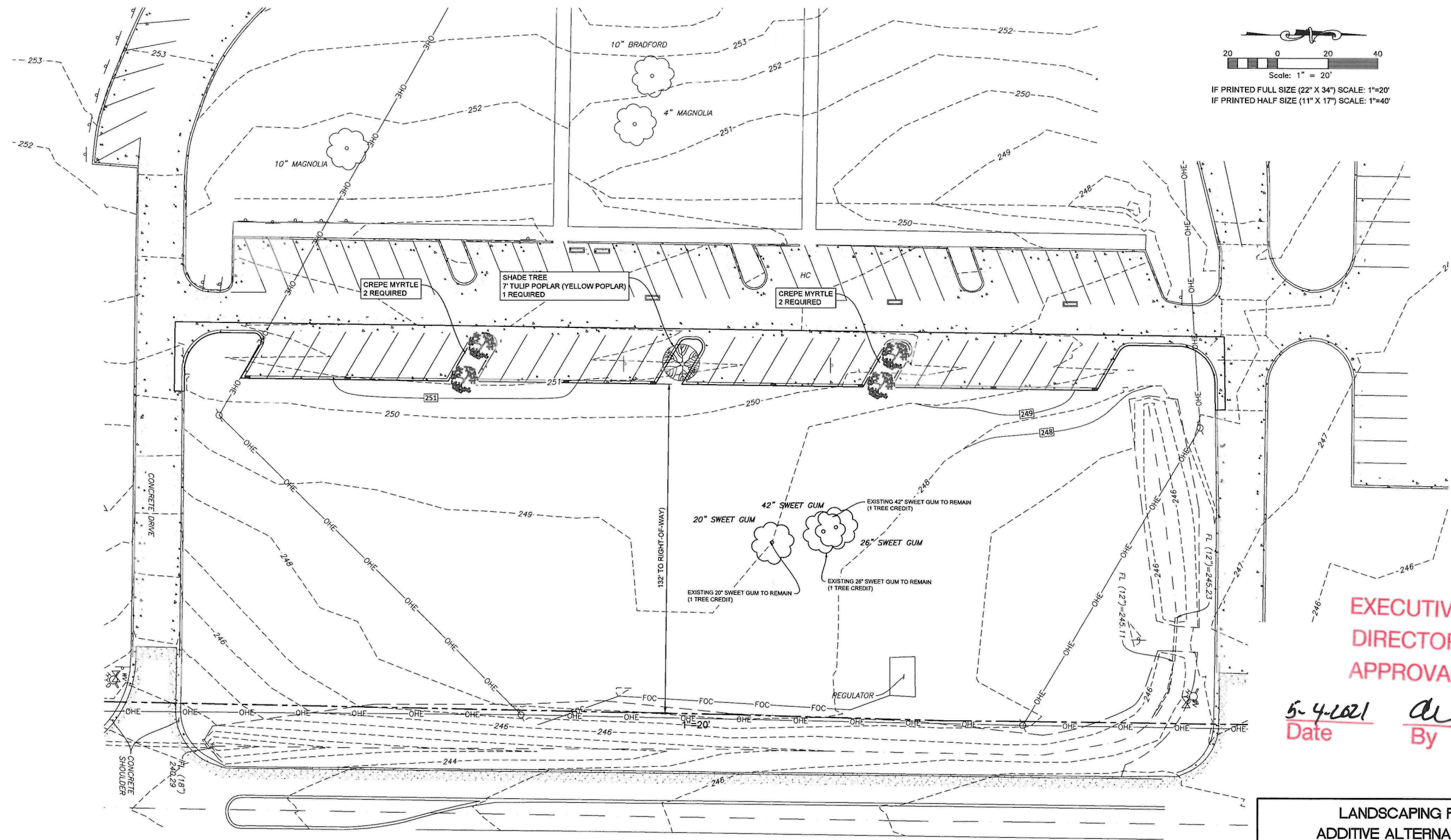
DURR
ENGINEERING, LLC
CONSULTING CIVIL ENGINEER
9045 ELLERBE RD., SUITE 106
SHREVEPORT, LOUISIANA 71106
BUSINESS PHONE: (318) 861-7975

PROJECT NO. 5825	
DATE 04-15-21	
DRAWN DB	CHECKED DD

MPC-C8

**ADDITIVE ALTERNATE NO. 1
GEOMETRIC LAYOUT & GRADING**
1"=20'

21-66-C



Scale: 1" = 20'

 IF PRINTED FULL SIZE (22" X 34") SCALE: 1"=20'

 IF PRINTED HALF SIZE (11" X 17") SCALE: 1"=40'

**EXECUTIVE
 DIRECTOR
 APPROVAL**

5-4-2021 *du*
 Date By

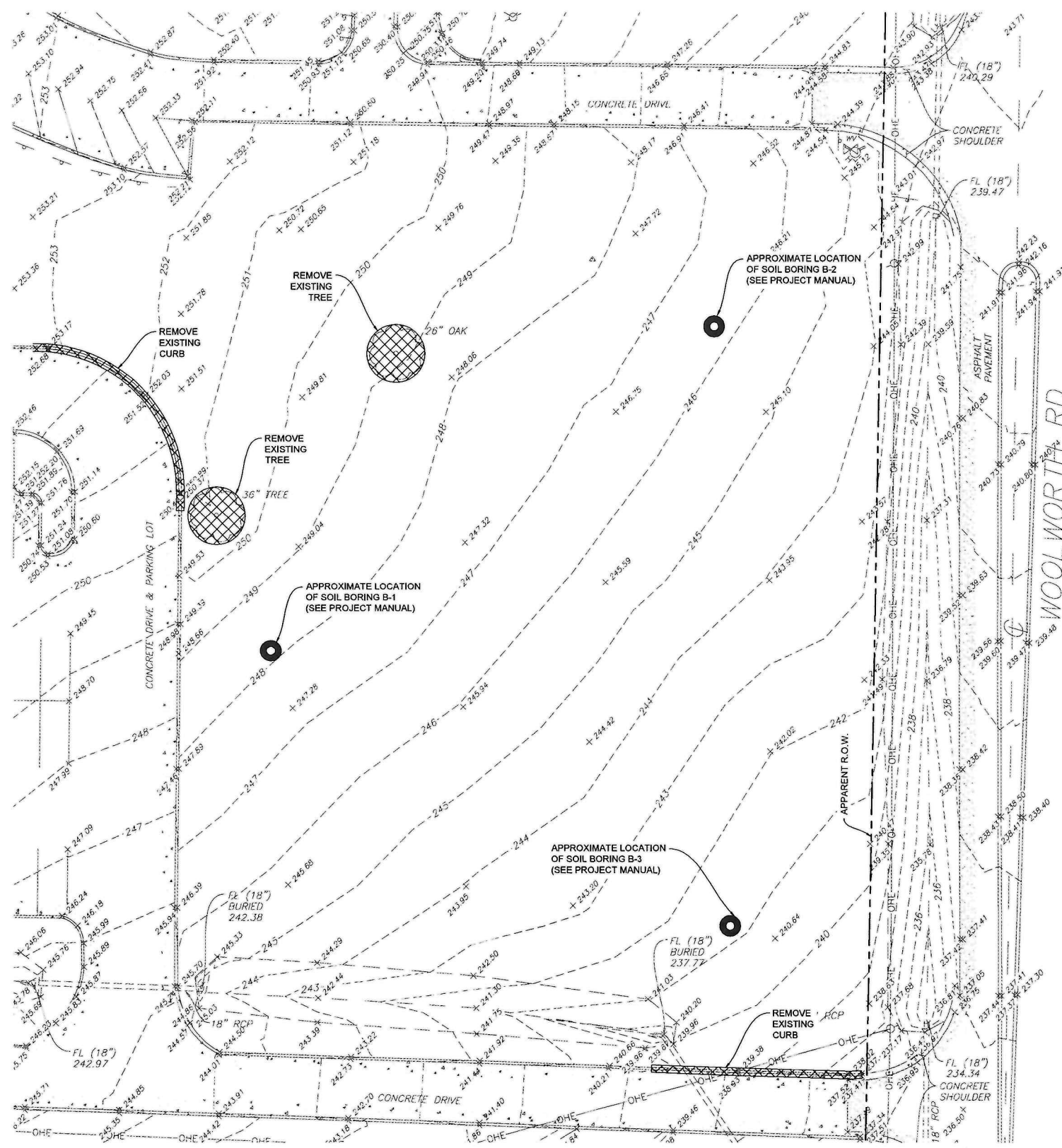
ADDITIVE ALTERNATE NO. 1 - LANDSCAPE PLAN

LANDSCAPING NOTES

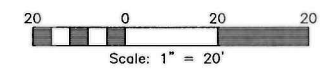
1. EDGE OF PARKING LENGTH - 343 LF.
2. EDGE OF PARKING GREATER THAN 100 LF FROM RIGHT-OF-WAY.
3. REQUIRED 1 SHADE TREE PER 50 LF OF EDGE OF PARKING = 7 TREES.
4. CREDIT FOR 3 EXISTING SWEET GUM TREES TO REMAIN.
5. REQUIRED NEW SHADE TREES WITH CREDIT - 3 TREES

LANDSCAPING PLAN ADDITIVE ALTERNATE NO. 1	
WALNUT HILL MIDDLE SCHOOL CADDO PARISH SCHOOL BOARD 9360 WOOLWORTH RD. SHREVEPORT, CADDO PARISH, LA	
 DURR ENGINEERING, LLC CONSULTING CIVIL ENGINEER 9045 ELLERBE RD., SUITE 106 SHREVEPORT, LOUISIANA 71106 BUSINESS PHONE: (318) 861-7975	PROJECT NO. 5825 DATE 04-15-21 DRAWN DB CHECKED DD
	MPC-C9

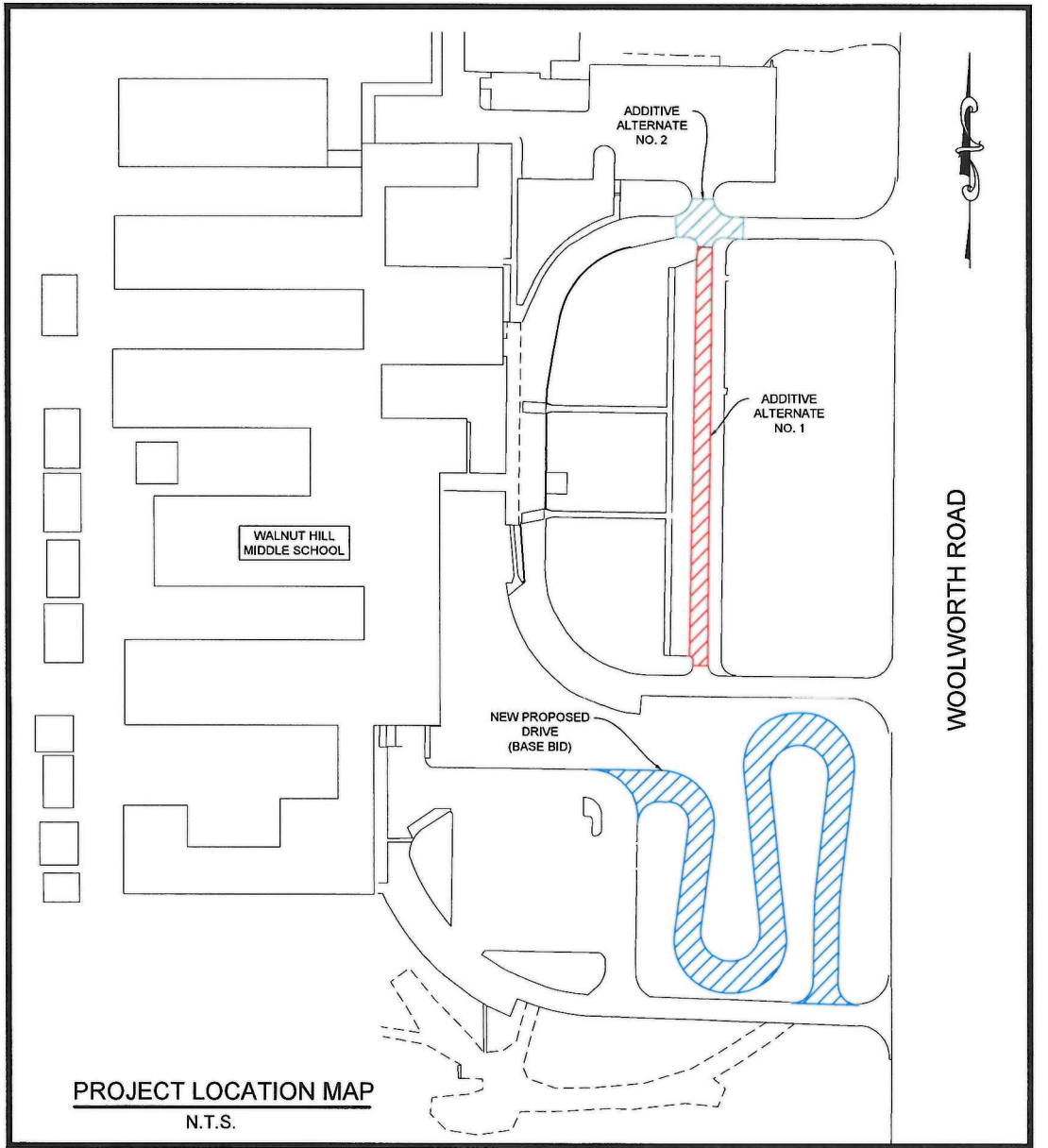
21-66-C



EXISTING CONDITIONS & DEMOLITION PLAN (BASE BID)
1"=20'



IF PRINTED FULL SIZE (22" X 34") SCALE: 1"=20'
IF PRINTED HALF SIZE (11" X 17") SCALE: 1"=40'



PROJECT LOCATION MAP
N.T.S.

EXECUTIVE DIRECTOR APPROVAL

5-4-2021 *AC*
Date By

EXISTING CONDITIONS AND DEMOLITION	
WALNUT HILL MIDDLE SCHOOL CADDO PARISH SCHOOL BOARD 9360 WOOLWORTH RD. SHREVEPORT, CADDO PARISH, LA	
 DURR ENGINEERING, LLC CONSULTING CIVIL ENGINEER 9045 ELLERBE RD., SUITE 106 SHREVEPORT, LOUISIANA 71106 BUSINESS PHONE: (318) 861-7975	PROJECT NO. 5825 DATE 04-15-21 DRAWN DB CHECKED DD MPC-C1

21-66-C