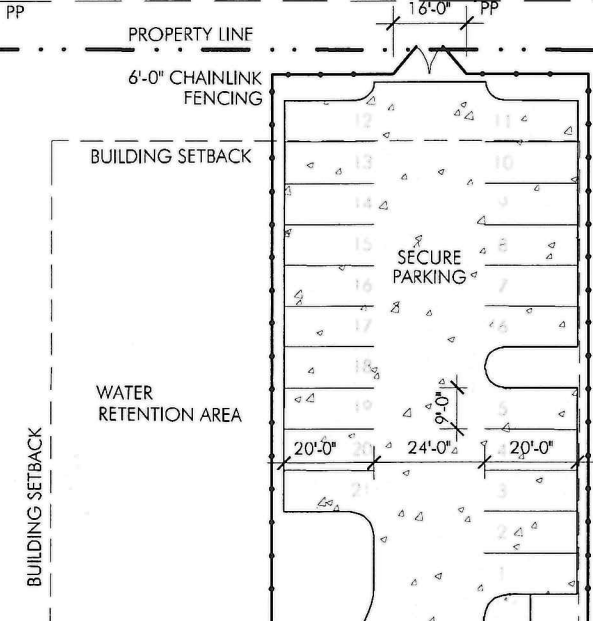


PENICK STREET

OVERHEAD POWER LINE



EXISTING  
PARKING LOT  
ZONED IC  
INSTITUTIONAL CAMPUS

MISSOURI AVENUE

BUILDING SETBACK

WATER RETENTION AREA

25' WIDE ROLLING GATE

DORM ENTRANCE

ALLEY

EXISTING  
PARKING LOT  
ZONED IC  
INSTITUTIONAL CAMPUS

ZONED C3  
GENERAL COMMERCIAL

20'-0"

NEW  
FIRE STATION #8  
11,306 SQ FT

TRASH BINS ARE STORED IN THE BAY

JACKSON ST

6'-0" CHAINLINK FENCE

WATER RETENTION AREA

ENTRANCE

BUILDING SETBACK

FLAGPOLE

NOTE: ALL OVERHEAD POWER & TELEPHONE LINES  
ALONG GREENWOOD ROAD & MISSOURI STREET ARE TO BE REMOVED.

FIRE STATION #8

A 1.279 ACRE TRACK IN THE NE/4 OF SECTION 10, T17N, R14W  
BEING A RESUBDIVISION OF LOTS 16-28,  
BLOCK 9, QUEENSBOROUGH ANNEX  
RECORDED IN BOOK 50, PAGE 20, CADDO PARISH, LOUISIANA

EXECUTIVE  
 DIRECTOR  
 APPROVAL  
 By *[Signature]*  
 Date 4-30-21  
 ZONED C3  
 GENERAL COMMERCIAL

GREENWOOD ROAD



SITE PLAN  
SCALE: 1" = 40'-0"



PROPOSED SITE PLAN FOR THE  
CITY OF SHREVEPORT  
FIRE STATION #8  
2756 GREENWOOD ROAD  
SHREVEPORT, LOUISIANA

SP-1

OCTOBER 14, 2020  
REVISED: APRIL 30, 2021

21-44-C

MISSOURI AVENUE

PENICK STREET

ALLEY

EXISTING  
PARKING LOT

NEW  
FIRE STATION #8

JACKSON ST

GREENWOOD ROAD

THE LONGEST VEHICLE IN THE  
STATION WILL BE LADDER TRUCK.  
IT IS 40'-4" LONG WITH A 241" WHEELBASE.  
THE INSIDE TURNING RADIUS IS 20.3'

AUTOTURN STUDY  
SCALE: 1" = 40'-0"

EXECUTIVE  
DIRECTOR'S  
APPROVAL  
By *ACL*  
Date 4-30-2021

21-44-C



PROPOSED SITE PLAN FOR THE  
CITY OF SHREVEPORT  
FIRE STATION #8  
2756 GREENWOOD ROAD  
SHREVEPORT, LOUISIANA

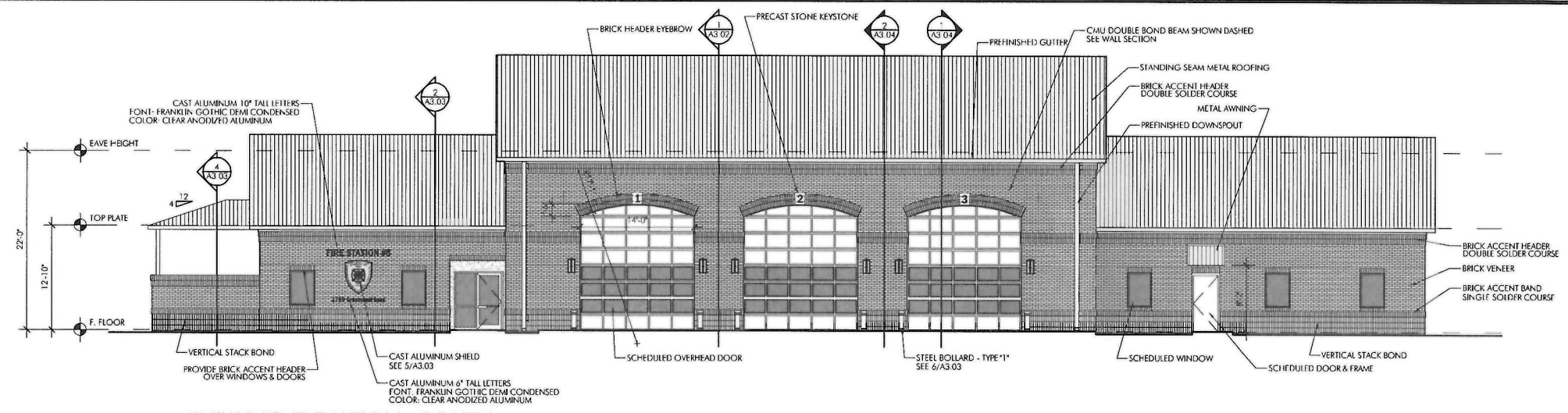
SP-2

APRIL 15, 2021

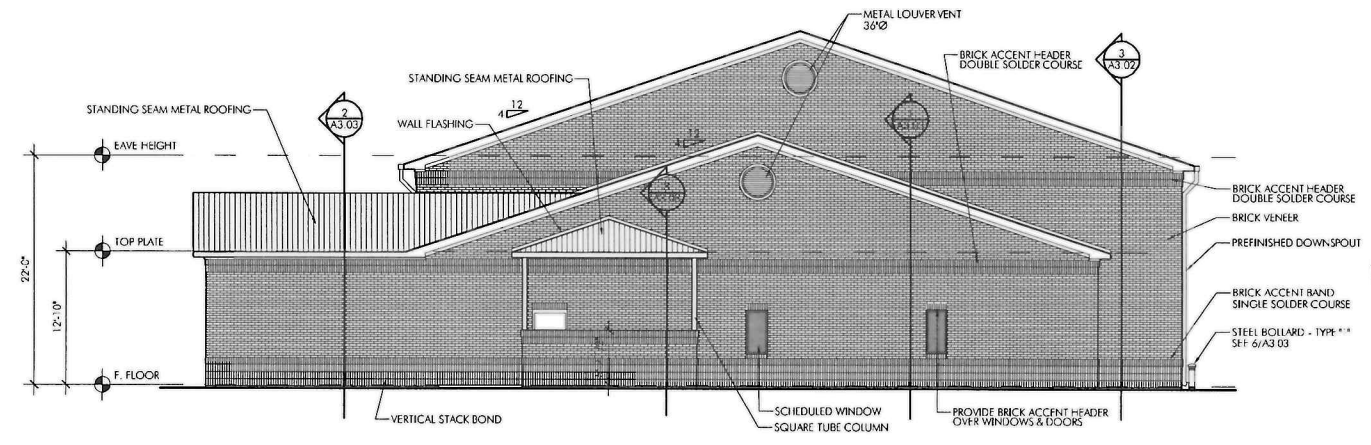


CITY OF SHREVEPORT  
505 TRAVIS STREET, SUITE 560  
SHREVEPORT, LA 71101  
PHONE 318.673.7868  
FAX 318.673.7878

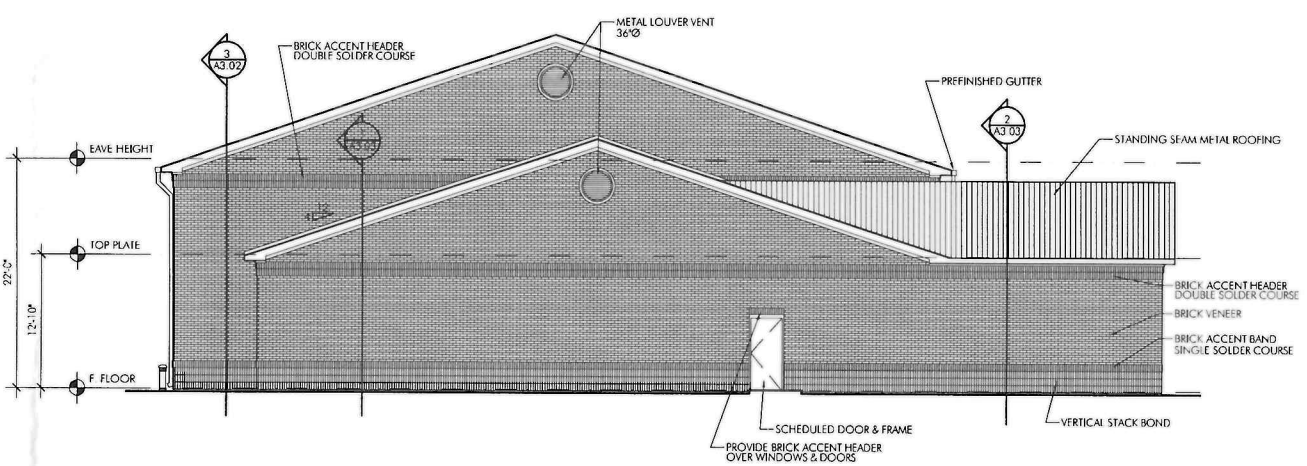
REVISIONS



**1 BUILDING ELEVATION - SOUTH**  
SCALE: 1/8" = 1'-0"



**2 BUILDING ELEVATION - WEST**  
SCALE: 1/8" = 1'-0"

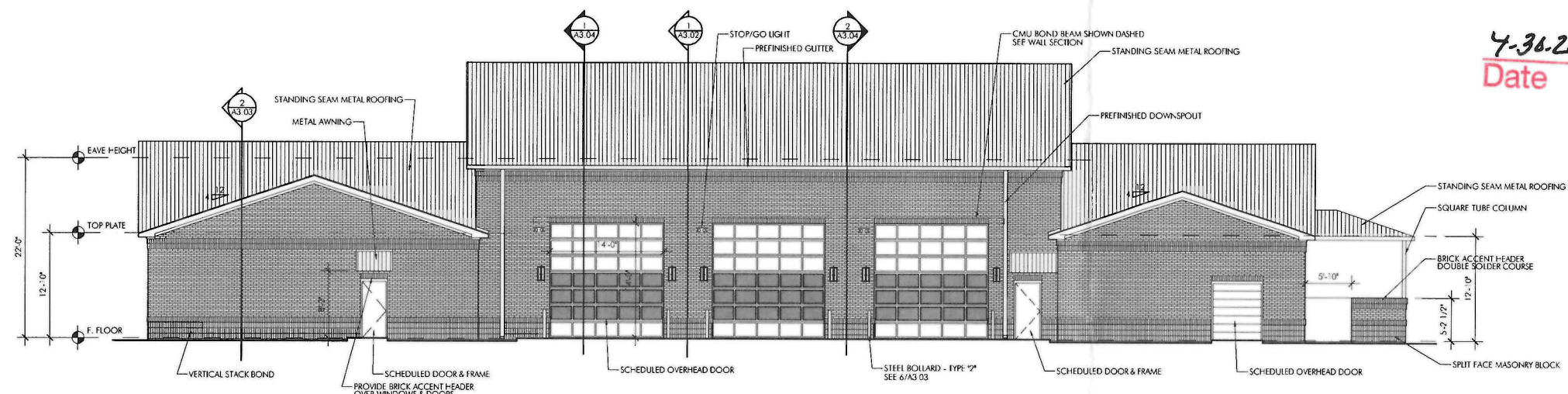


**3 BUILDING ELEVATION - EAST**  
SCALE: 1/8" = 1'-0"

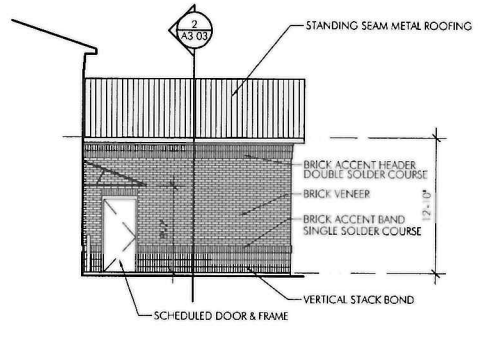
**EXECUTIVE  
DIRECTOR  
APPROVAL**

**7-30-2024**  
Date

*de Chk*  
By



**4 BUILDING ELEVATION - NORTH**  
SCALE: 1/8" = 1'-0"



**5 BUILDING ELEVATION**  
SCALE: 1/8" = 1'-0"

THE RE-BID OF A NEW FIRE STATION FOR  
**CITY OF SHREVEPORT**  
SHREVEPORT FIRE DEPARTMENT - FIRE STATION #8  
2756 GREENWOOD ROAD  
SHREVEPORT, LOUISIANA



AUGUST 31, 2020

**A3.01**

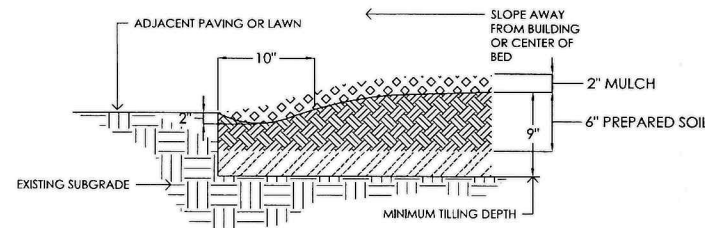
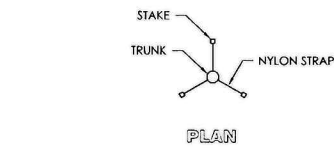
IFB 20-024

21-44-C

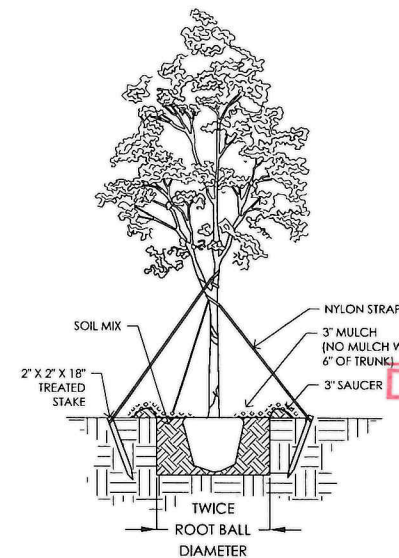
PLANT MATERIALS LIST				
QTY	COMMON NAME	BOTANICAL NAME	SIZE	NOTES
6	AGAPANTHUS	AGAPANTHUS AFRICANUS	3 GAL	18" HEIGHT, 18" SPREAD, VARIETY 'MOREANUS BLUE'
8	AZALEA	RHODENDRON INDICUM	5 GAL	24" HEIGHT, 24" SPREAD, VARIETY 'FORMOSA'
3	CYPRESS	TAXODIUM DISTICHUM	2-1/2" CAL	10-12' HEIGHT, 4" SPREAD
3	CRAPE MYRTLE	LAGERSTROEMIA INDICA	8-10' HT	MULTI-TRUNK, 3-5 STEMS, 1.5" CAL. EACH STEM, VAR. NATCHEZ WHITE
2	DRAKE ELM	ULMUS PARVIFOLIA 'DRAKE'	2-1/2" CAL	10-12' HEIGHT, 4" SPREAD, VARIETY 'DRAKE'
68	DWARF YAUPON	ILEX VOMITORIA 'NANA'	3 GAL	15" HEIGHT, 15" SPREAD, VARIETY 'STOKES DWARF'
103	INDIAN HAWTHORN	RAPHIOLEPIS INDICA	3 GAL	15" HEIGHT, 15" SPREAD, VARIETY 'CLARA'
540	LINER FEET OF EDGING			
205	LIRIOPE	LIRIOPE MUSCARI	1 GAL	7-12 BIBBS PER POT, VARIETY 'WEBSTER WIDELEAF'
8	LOBLOLLY PINE	PINUS TAEDA	2-1/2" CAL	10-12' HEIGHT, 4" SPREAD
5	RED MAPLE	ACER RUBRUM DRUMMONDII	2-1/2" CAL	10-12' HEIGHT, 4" SPREAD, VARIETY 'AUTUMN BLAZE'
1,870	SQUARE FEET OF BED PREPARATION			
2,870	SQUARE YARDS OF BERMUDA SOD	CYNODON DACTYLON		
40	YELLOW FLAG IRIS	IRIS PSEUDACORUS	1 GAL	

**PLANTING NOTES:**

- QUANTITIES SHOWN ON PLANT MATERIALS LIST ARE PROVIDED AS AN AID TO THE CONTRACTOR AND SHOULD BE VERIFIED BY THE BIDDER.
- CONSULT ARCHITECT'S / ENGINEER'S PLANS FOR LOCATION OF UNDERGROUND UTILITIES.
- STEEL EDGING IS REQUIRED BETWEEN ALL BEDS (MASSED SHRUBS AND GROUNDCOVERS) AND GRASS.
- STEEL EDGING IS NOT REQUIRED WHERE BEDS ABUT PAVEMENT OR WALLS OR AROUND PIT PLANTED PLANTS.
- COORDINATE WORK WITH IRRIGATION CONTRACTOR - PLANT LOCATIONS TAKE PRIORITY OVER PIPE LOCATIONS.
- HAVE LOUISIANA ONE CALL LOCATE ALL UNDERGROUND UTILITIES BEFORE BEGINNING WORK.
- SEED ANY AREAS THAT ARE DISTURBED BY CONSTRUCTION.
- PERFORM ALL WORK IN ACCORDANCE TO CITY OF SHREVEPORT CODES AND ORDINANCES.
- CUT 45 DEGREE ANGLE ON STEEL EDGING WHERE EDGING ABUTS THE PAVEMENT.

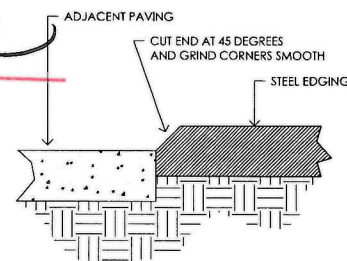


**EXECUTIVE B** BED PREPARATION DETAIL  
NOT TO SCALE  
DIRECTOR APPROVAL



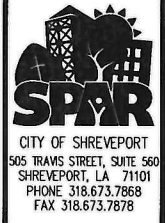
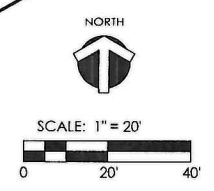
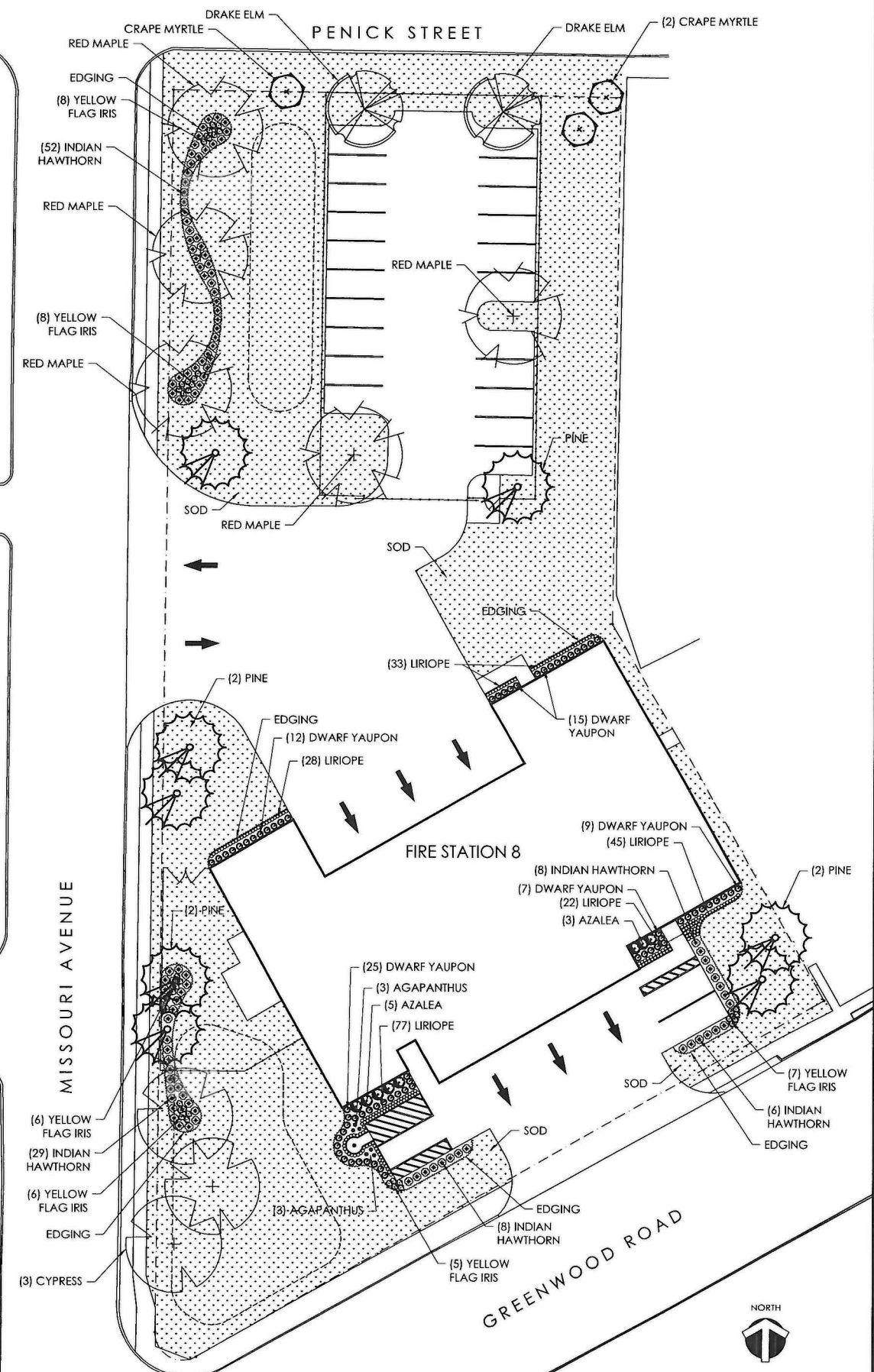
**A** TREE PLANTING DETAIL  
NOT TO SCALE  
2" CALIPER AND LARGER

Date 4.31.2021  
By *ad*



**C** STEEL EDGING DETAIL  
NOT TO SCALE

**PLANTING PLAN**



SHREVEPORT PUBLIC ASSEMBLY & RECREATION  
FIRE STATION 8 - PLANTING PLAN  
GREENWOOD ROAD  
SHREVEPORT, LOUISIANA



AUGUST 31, 2020

L1.01

21-44-C

**LEGEND**

SYMBOL	DESCRIPTION
	2 - HUNTER MODEL MSBN-50H
	TORO 570 - 8-Q
	TORO 570 - 8-H
	TORO 570 - 8-270
	TORO 570 - 2-SST
	TORO 570 - 12-Q
	TORO 570 - 12-H
	TORO 570 - 12-270
	TORO 570 - 12-F
	TORO 250 SERIES 2" ELECTRIC VALVE
	2" FEBCO PRESSURE BACKFLOW PREVENTER
	CONTROLLER - TORO EVOLUTION SERIES MODEL EVO-121D
	WATER METER
	2" SLEEVE (CAP FOR FUTURE USE)
	LATERAL LINE
	2" PRESSURE LINE
	EXISTING WATER MAIN

**NOTES:**

CONSULT ARCHITECT'S AND ENGINEER'S PLANS FOR LOCATION OF UNDERGROUND UTILITIES.

WHERE MODEL 570 SPRAY HEADS ARE CALLED FOR, PROVIDE 4" POP-UPS IN TURF AREAS AND 12" HI-POPS IN GROUND COVER AREAS AND SHRUB RISERS IN SHRUB AREAS.

COORDINATE WORK WITH LANDSCAPE CONTRACTOR - PLANT LOCATIONS TAKE PRIORITY OVER PIPE LOCATIONS.

LOCATE CONTROLLER IN THE MECHANICAL ROOM AS INDICATED ON PLAN. A 110 VOLT OUTLET AND 1-1/2" CONDUIT TO THE ADJACENT LAWN AREA IS PROVIDED.

ALL PIPE AND CONTROL WIRE UNDER PAVEMENT TO BE IN SLEEVES (SEE SPECIFICATIONS).

VERIFY MINIMUM 20 PSI OPERATING PRESSURE IN EACH ZONE - BEFORE BEGINNING INSTALLATION.

PLACE ALL VALVES IN 10" DIA. BOXES.

PROVIDE TAP INTO EXISTING WATER MAIN.

PERFORM ALL WORK IN ACCORD WITH LOCAL CODES.

FOR CLARITY, 1/2" PIPE IS NOT LABELED ON THIS DRAWING.

**GALLONAGE REQUIREMENTS**

SECTION	GALLONS
1	17.15
2	10
3	5.16
4	13
5	17
6	0
7	0
8	0
9	0
10	0
11	0
12	0

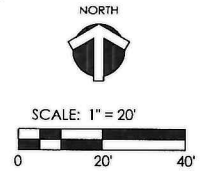
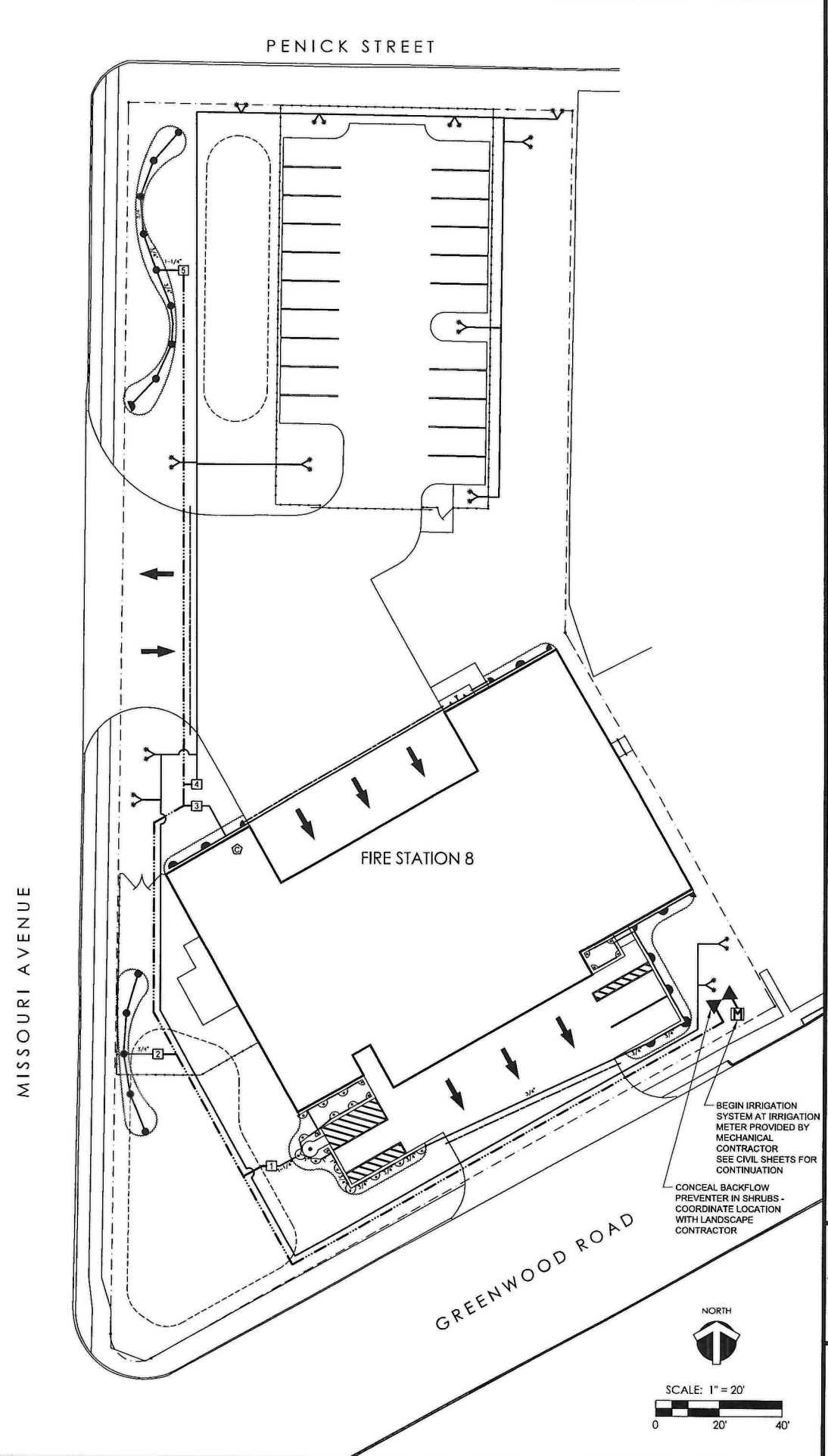
**PIPE SIZING**

PIPE SIZE	GALLONS PER MINUTE
1/2"	0 - 5
3/4"	6 - 10
1"	11 - 15
1 1/4"	16 - 25
1 1/2"	26 - 40
2"	41 AND ABOVE

**EXECUTIVE  
DIRECTOR  
APPROVAL**

*4-30-2021*  
Date By *A. Olke*

**IRRIGATION PLAN**



**SPR**  
CITY OF SHREVEPORT  
505 TRAVIS STREET, SUITE 560  
SHREVEPORT, LA 71101  
PHONE 318.673.7868  
FAX 318.673.7878

**SHREVEPORT PUBLIC ASSEMBLY & RECREATION**  
FIRE STATION 8 - IRRIGATION PLAN  
GREENWOOD ROAD  
SHREVEPORT, LOUISIANA



AUGUST 31, 2020

**L2.01**

*21-44-C*

**P+A**  
**PURTEL & ASSOCIATES**  
 CONSULTING ENGINEERS  
 5411 STOVING ROAD, SUITE 300  
 SHREVEPORT, LOUISIANA 71105  
 318 422 4500  
 Fax 318 222 8004  
 purtel@purtel.net • PM-19337  
 LICENSE Registered Engineering Firm # 224  
 CONTRACT  
 THESE DOCUMENTS ARE PREPARED BY  
 UNITED STATES GOVERNMENT LAWS, REGULATIONS  
 AND ORDINANCES SPECIFICALLY FOR THE  
 PROJECT DESCRIBED AND ARE NOT VALID FOR  
 ANY OTHER PROJECT OR AT ANY  
 OTHER LOCATION WITHOUT THE EXPRESS  
 WRITTEN APPROVAL AND SIGNATURE OF  
 PURTEL AND ASSOCIATES, L.C. REPRODUCTION  
 OF THESE DOCUMENTS ON ANY MEDIUM,  
 DIGITAL ETC. MUST BE AUTHORIZED BY  
 PURTEL AND ASSOCIATES, L.C. ALL RIGHTS ARE  
 RESERVED TO PURTEL AND ASSOCIATES, L.C.

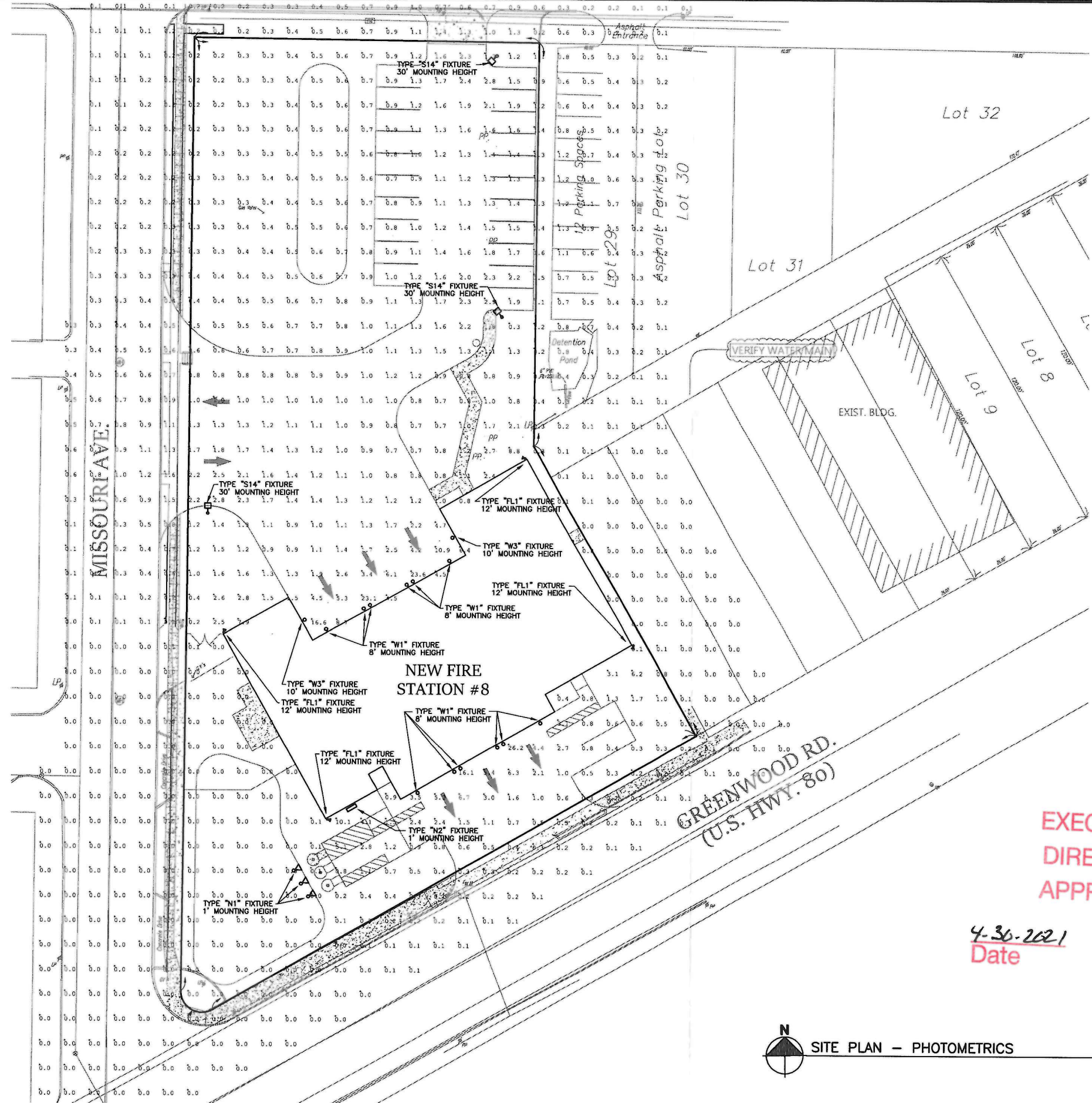
**SPAR**  
 CITY OF SHREVEPORT  
 505 TRAVIS STREET, SUITE 560  
 SHREVEPORT, LA 71101  
 PHONE 318.673.7868  
 FAX 318.673.7878

REVISIONS

THE RE-BID OF A NEW FIRE STATION FOR  
**CITY OF SHREVEPORT**  
 SHREVEPORT FIRE DEPARTMENT - FIRE STATION #8  
 2756 GREENWOOD ROAD  
 SHREVEPORT, LOUISIANA

APRIL 27, 2021

ME2



EXECUTIVE  
 DIRECTOR  
 APPROVAL

4-30-2021  
 Date By *ACM*



SITE PLAN - PHOTOMETRICS

SCALE: 1"=20'-0"



21-44-C



# OLF

## LED Security Floodlight with photocell, two heads

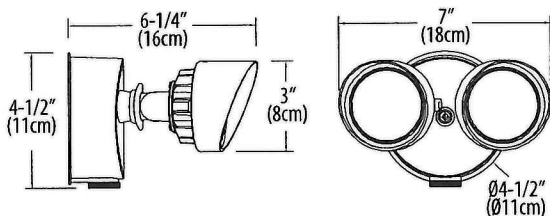
FL 1



Catalog Number
Notes
Type

### Specifications

<b>Width:</b>	7.00" (17.8 cm)
<b>Height:</b>	4.5" (11.4 cm)
<b>Depth:</b>	6.25" (15.9 cm)
<b>Weight:</b>	1.5 lbs. (0.68 kg)
<b>Lumen Output:</b>	2,160
<b>Input Power:</b>	25W
<b>Efficacy:</b>	86 Lumens per Watt
<b>Input volage:</b>	120V



### Introduction

The OLF LED security floodlight combines energyefficient LEDs with photocell (or dusk-to-dawn) technology.

OLF 2RH contains two round heads delivering 2,160 lumens using only 25W power. OLF 2RH replaces up to two 90W PAR incandescent lamps and saves 86% energy. A built-in photocell prevents daylight operation, and reduces energy costs further. OLF family is a flexible and cost effective solution for any residential and commercial security floodlighting application.

### Ordering Information

**EXAMPLE:** OLF 2RH 40K 120 PE DDB

Series	Number of heads	Color Temperature <sup>1</sup>	Voltage	Control	Finish
OLF	2RH 2 heads, round	40K 4000K <sup>1</sup>	120 120 volts	(blank) none PE Dusk-to-dawn photocell	DDB Dark Bronze WH White

EXECUTIVE  
DIRECTOR  
APPROVAL

#### Complete list of configurations available:

- OLF 2RH 40K 120 DDB
- OLF 2RH 40K 120 PE DDB
- OLF 2RH 40K 120 WH
- OLF 2RH 40K 120 PE WH

4-30-2021  
Date

*AC*  
By

#### NOTES

- Correlated color temperature (CCT) shown is nominal per ANSI C78, 377-2008.
- LED lifespan based on IESNA LM-80-08 results and calculated per IESNA TM-21-11 methodology.

### FEATURES & SPECIFICATIONS

#### INTENDED USE

OLF security floodlights are ideal for an energy-efficient replacement of two 90W incandescent security lights. The OLF LED provides over 10 years of maintenance-free general illumination for outdoor applications. OLF 2RH with PE (photocell) option prevents daylight operation and saves energy costs. Ideal for entrances, walkways, corridors, yards, driveways and patios.

#### CONSTRUCTION

Cast-aluminum housing with dark bronze or white polyester powder paint for lasting durability. Photocell sensitivity is adjustable. LED lamp heads are thermally isolated from the driver that is located in the rear housing, promoting a long service life. Lenses are sealed to prolong service life. LEDs maintain 70% of light output at 50,000 hours of service life.

#### ELECTRICAL

Consumes 25W power, 120V input. 60Hz driver. Available in models with or without dusk-to-dawn photocell. Rated for outdoor installations, -40°C minimum ambient.

#### INSTALLATION

Mounts to a recessed junction box on wall or ceiling. Crossbar and hardware provided. Wet location listed for mounting 4 feet above ground. Tool-less adjustable heads allow for precise aiming. Neighbor-friendly visors are adjustable or removable.

#### LISTINGS

UL/cUL listed Listed to U.S. and Canadian safety standards for wet locations. Tested in accordance with IESNA LM-79 and LM-80 standards. ENERGY STAR® certified product.

#### WARRANTY

Five-year limited warranty. Complete warranty terms located at: [www.acuitybrands.com/CustomResources/Terms\\_and\\_conditions.aspx](http://www.acuitybrands.com/CustomResources/Terms_and_conditions.aspx).

**Note:** Actual performance may differ as a result of end-user environment and application. All values are design or typical values, measured under laboratory conditions at 25 °C. Specifications subject to change without notice.



COMMERCIAL OUTDOOR

One Lithonia Way • Conyers, Georgia 30012 • Phone: 1-800-705-SERV (7378) • [www.lithonia.com](http://www.lithonia.com)  
© 2010-2020 Acuity Brands Lighting, Inc. All rights reserved.

OLF 2RH  
Rev. 09/17/20

N1

EXECUTIVE  
DIRECTOR  
APPROVAL



d"series

# D-Series Size 2 LED Floodlight



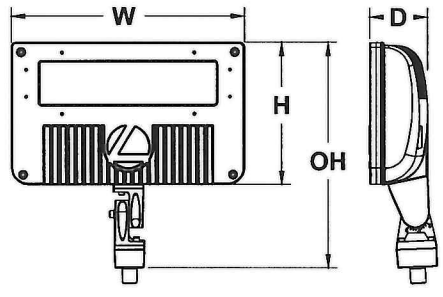
Catalog Number \_\_\_\_\_

Notes \_\_\_\_\_

Type 4-30-2021 Date                      By                     

## Specifications

<b>EPA:</b>	0.8 ft <sup>2</sup> (0.05 m <sup>2</sup> )
<b>Depth:</b>	3-1/8" (8.0 cm)
<b>Width:</b>	12-7/8" (32.6 cm)
<b>Height:</b>	7-3/4" (19.8 cm)
<b>Overall Height:</b>	12" (30.5 cm)
<b>Weight:</b>	10.5 lbs (4.8 kg)



## Introduction

The D-Series floodlights feature a site-wide offering to meet specifier's every floodlighting need in application. The D-Series flood offers three sizes delivering 3,000 to 27,000 lumens. Available with seven precision optics, three mountings and three color temperatures, D-Series floodlights offer vast design capabilities while delivering significant energy savings and long life.

The DSXF2 delivers 7,000 to 12,000 lumens, meeting a large breadth of illumination requirements for design and renovation when replacing 175w and 250W HID floodlights. All configurations are made in North America allowing for quick delivery.

## Ordering Information

**EXAMPLE:** DSXF2 LED P1 40K MSP MVOLT THK DDBXD

DSXF2 LED							
Series	Performance Package	Color Temperature	Distribution	Voltage	Mounting	Options	Finish <i>(required)</i>
DSXF2 LED	P1	30K 3000K	NSP Narrow spot (3X3)	MVOLT <sup>1</sup>	<b>Shipped included</b>	<b>Shipped installed</b>	DDBXD Dark bronze
	P2	40K 4000K	MSP Medium spot (4X4)	120 <sup>2</sup>	THK Knuckle with 1/2" NPS threaded pipe	PE Photocontrol, button style <sup>6</sup>	DBLXD Black
	P3	50K 5000K	MFL Medium flood (4X4)	208 <sup>2</sup>	YKC62 Yoke with 16-3 SO cord	PEX Photocontrol external swivel mount <sup>6</sup>	DNAXD Natural aluminum
			FL Flood (5X5)	240 <sup>2</sup>	IS Integral slipfitter (fits 2-3/8" O.D. tenon)	DMG 0-10v dimming wires pulled outside fixture (for use with an external control, ordered separately)	DWHXD White
			WFL Wide flood (6X6)	277 <sup>2</sup>	<b>Shipped separately<sup>3</sup></b>	DF Double fuse (208, 240, 480V) <sup>3</sup>	
			WFR Wide flood, rectangular (6X5)	347 <sup>2,3</sup>	DSXF1/2TS Tenon slipfitter (2-3/8" O.D. THK required) <sup>3</sup>	SPD10KV Separate surge protection	
			HMF Horizontal flood (6X4)	480 <sup>2,4</sup>	FTS CG6 Tenon slipfitter (2-7/8" O.D. YKC62 required) <sup>3</sup>	<b>Shipped separately<sup>5</sup></b>	
						UBV Upper/bottom visor (universal)	
						FV Full visor	
						VG Vandal guard	

## Accessories

Ordered and shipped separately.

DSXF1/2TS DDBXD U	Slipfitter for 1-1/4" to 2-3/8" OD tenons; mates with 1/2" threaded knuckle (specify finish)
FTS CG6 DDBXD U	Slipfitter for 2-3/8" to 2-7/8" OD tenons; mates with yoke mount (specify finish)
FRWB DDBXD U	Radius wall bracket, 2-3/8" OD tenon (specify finish)
FSPB DDBXD U	Steel square pole bracket, 2-3/8" OD tenon (specify finish)
DSXF2UBV DDBXD U	Upper/bottom visor accessory (specify finish)
DSXF2FV DDBXD U	Full visor accessory (specify finish)
DSXF2VG U	Vandal guard accessory

For more mounting options, visit our [Floodlighting Accessories](#) pages.

## Stock configurations are offered for shorter lead times:

Standard Part Number	Stock Part Number	CI Code
DSXF2 LED P1 40K WFL MVOLT THK DDBXD	DSXF2 LED P1 40K	*240TJ9
DSXF2 LED P1 50K WFL MVOLT THK DDBXD	DSXF2 LED P1 50K	*240TJ8
DSXF2 LED P2 40K WFL MVOLT THK DDBXD	DSXF2 LED P2 40K	*240THT
DSXF2 LED P2 50K WFL MVOLT THK DDBXD	DSXF2 LED P2 50K	*240TJC
DSXF1/2 Slip-fitter Tenon Accessory DDBXD	DSXF1/2TS DDBXD U	*216G5K

## NOTES

- MVOLT driver operates on line voltage from 120-277V.
- Single fuse (SF) requires 120V, 277V or 347V. Double fuse (DF) requires 208V, 240V or 480V.
- Not available with option PEX.
- Not available with option PE and PEX.
- Also available as accessories; see accessories information at left.
- Photocontrol (PE) available in P1 or P2 package only and requires MVOLT or 347 voltage option. Photocontrol (PEX) requires 120, 208, 240 or 277 voltage option.





N2

EXECUTIVE  
DIRECTOR  
APPROVAL

**Type:**  
**Job:**  
**Fixture Catalog number:**

---

Fixture      Wattage / Lamp(s)      Finish

**Fixture Options:**  
Ordered Separately from Fixture  
See page 2

---

**Mounting Options:**  
Ordered Separately from Fixture  
See pages 3-5:

**Approvals:**

*A. Clark*  
Date: 4-30-2021  
Page: 1 of 5

## Specifications

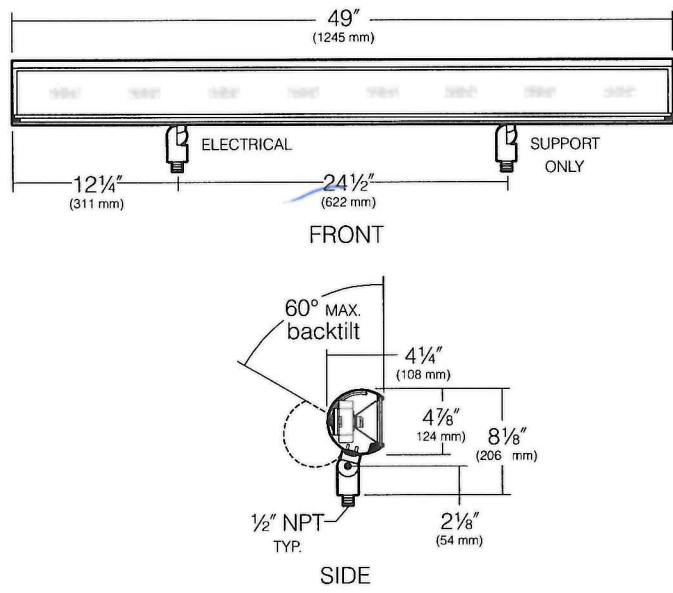
### ORDERING INFORMATION

Fixture	Light Engine	Length
<input type="checkbox"/> 4348P70 / 32L3KUV	74W, 32 LED's, 3000K	49"
<input type="checkbox"/> 4348P70 / 32L4KUV	74W, 32 LED's, 4200K	49"
<input type="checkbox"/> 4348P70 / 32L5KUV	74W, 32 LED's, 5100K	49"

UV = Universal Voltage from 120 to 277V with a ±10% tolerance.

#### Finish

- BL - Black
- DB - Dark Bronze
- GR - Verde Green



**Housing:** One-piece extruded aluminum with die-cast aluminum ends.

**Swivels:** Two, die-cast aluminum, with locking teeth and 1/2" solid brass NPT mount. Swivel locked by 1/4-20 stainless set screw. Clear anodized prior to powder coating for added corrosion resistance.

**Lens:** Semi-diffused flat acrylic, fully gasketed, retained by a concealed extruded aluminum rail with recessed captive hex socket head fasteners.

**Wiring:** Factory prewired with No. 18AWM rated 105°C, leads extended from swivel base.

**Electronic Module:** All electrical components are UL and CSA recognized, mounted on a single plate and factory prewired. Electrical and optical modules attaches to housing with stainless steel hardware, accessible by removing the rail and lens. Driver is rated for -40°F starting and has a 0-10V dimming interface with a dimming range of 10-100%. Approved dimmers include Lutron Diva DDTV, Lutron Nova NDTV and NTFTV. Note: Not compatible with current sourcing dimmers. Controls compatible via Gray and Purple dimming leads.

**Optical Module:** Each precision, replaceable PicoPrism is positioned to aim directly out the lens toward the task. The entire optical system fastens to the housing as a one-piece module.

**Finish:** Each luminaire receives a fade and abrasion resistant, electrostatically applied, thermally cured, triglycidal isocyanurate (TGIC) polyester powder coat finish. Standard colors include (BL) Black, (DB) Dark Bronze, (GR) Verde Green.

**Listed To:** UL 1598<sup>1</sup> Standard for Luminaires - UL 8750 Standard for Safety for Light Emitting Diode (LED) Equipment for use in Lighting Products and CSA C22.2#250.0 Luminaires.

**Warranty:** Kim Lighting warrants 4300 Sign Lighter LED products sold by Kim Lighting to be free from defects in material and workmanship for (i) a period of five (5) years for metal parts, (ii) a period of five (5) years for exterior housing paint finish(s), (iii) a period of five (5) years for LED Light Engines and, (iv) a period of five (5) years for LED power components (driver, surge protector and LifeShield® device), from the date of sale of such goods to the buyer as specified in Kim Lighting shipment documents for each product.

**Caution:** Fixtures must be grounded in accordance with national, state and/or local electrical codes. Failure to do so may result in serious personal injury.

<sup>1</sup>Suitable for wet locations.



KIM LIGHTING RESERVES THE RIGHT TO CHANGE SPECIFICATIONS WITHOUT NOTICE.



(S14)

# D-Series Size 0 LED Area Luminaire



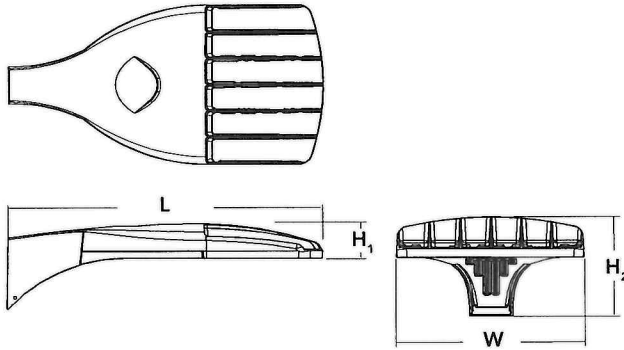
EXECUTIVE  
DIRECTOR  
APPROVAL

Catalog Number	
Notes	4-30-2021 <i>AA</i>
Type	Date By

d"series

## Specifications

EPA:	0.95 ft <sup>2</sup> (.09 m <sup>2</sup> )
Length:	26" (66.0 cm)
Width:	13" (33.0 cm)
Height <sub>1</sub> :	3" (7.62 cm)
Height <sub>2</sub> :	7" (17.8 cm)
Weight (max):	16 lbs (7.25 kg)



## Introduction

The modern styling of the D-Series is striking yet unobtrusive - making a bold, progressive statement even as it blends seamlessly with its environment. The D-Series distills the benefits of the latest in LED technology into a high performance, high efficacy, long-life luminaire.

The outstanding photometric performance results in sites with excellent uniformity, greater pole spacing and lower power density. It is ideal for replacing up to 400W metal halide with typical energy savings of 70% and expected service life of over 100,000 hours.

## Ordering Information

**EXAMPLE:** DSX0 LED P6 40K T3M MVOLT SPA NLTAIR2 PIRHN DDBXD

### DSX0 LED

Series	LEDs	Color temperature	Distribution	Voltage	Mounting
DSX0 LED	<b>Forward optics</b>	30K 3000 K	T1S Type I short (Automotive)	MVOLT (120V-277V) <sup>5,6</sup>	<b>Shipped included</b> SPA Square pole mounting RPA Round pole mounting <sup>10</sup> WBA Wall bracket <sup>3</sup> SPUMBA Square pole universal mounting adaptor <sup>11</sup> RPUMBA Round pole universal mounting adaptor <sup>11</sup> <b>Shipped separately</b> KMA8 DDBXD U Mast arm mounting bracket adaptor (specify finish) <sup>17</sup>
	P1 P5	40K 4000 K	T2S Type II short	XVOLT (277V-480V) <sup>7,8,9</sup>	
	P2 P6	50K 5000 K	T2M Type II medium	120 <sup>6</sup>	
	P3 P7 <sup>1</sup>		T3S Type III short	208 <sup>6</sup>	
	P4 <sup>1</sup>		T3M Type III medium	240 <sup>6</sup>	
	<b>Rotated optics</b>		T4M Type IV medium	277 <sup>6</sup>	
	P10 <sup>2</sup> P12 <sup>2</sup>		TFTM Forward throw medium	347 <sup>6</sup>	
	P11 <sup>2</sup> P13 <sup>1,2</sup>		T5VS Type V very short <sup>3</sup>	480 <sup>6</sup>	
			T5S Type V short <sup>3</sup>		
			T5M Type V medium <sup>3</sup>		
		T5W Type V wide <sup>3</sup>			
		BLC Backlight control <sup>4</sup>			
		LCCO Left corner cutoff <sup>4</sup>			
		RCCO Right corner cutoff <sup>4</sup>			

Control options	Other options	Finish
<b>Shipped installed</b> NLTAIR2 nLight AIR generation 2 enabled <sup>13,14</sup> PIRHN Network, high/low motion/ambient sensor <sup>15</sup> PER NEMA twist-lock receptacle only (control ordered separate) <sup>16</sup> PER5 Five-pin receptacle only (control ordered separate) <sup>16,17</sup> PER7 Seven-pin receptacle only (leads exit fixture) (control ordered separate) <sup>16,17</sup> DMG 0-10V dimming extend out back of housing for external control (control ordered separate) <sup>18</sup>	<b>Shipped installed</b> HS House-side shield <sup>22</sup> SF Single fuse (120, 277, 347V) <sup>6</sup> DF Double fuse (208, 240, 480V) <sup>6</sup> L90 Left rotated optics <sup>2</sup> R90 Right rotated optics <sup>2</sup> DDL Diffused drop lens <sup>22</sup> HA 50°C ambient operations <sup>1</sup> <b>Shipped separately</b> BS Bird spikes <sup>23</sup> EGS External glare shield	DDBXD Dark bronze DBLXD Black DNAXD Natural aluminum DWHXD White DDBTXD Textured dark bronze DBLBXD Textured black DNATXD Textured natural aluminum DWHGXD Textured white
PIR High/low, motion/ambient sensor, 8-15' mounting height, ambient sensor enabled at 5fc <sup>19,20</sup> PIRH High/low, motion/ambient sensor, 15-30' mounting height, ambient sensor enabled at 5fc <sup>19,20</sup> PIR1FC3V High/low, motion/ambient sensor, 8-15' mounting height, ambient sensor enabled at 1fc <sup>19,20</sup> PIRH1FC3V High/low, motion/ambient sensor, 15-30' mounting height, ambient sensor enabled at 1fc <sup>19,20</sup> FAO Field adjustable output <sup>21</sup>		





# ASW1 LED

## LED Wall Luminaire

W1

EXECUTIVE  
DIRECTOR  
APPROVAL



Catalog Number	
Notes	
Type	4-30-2021
Date	By

AERIS

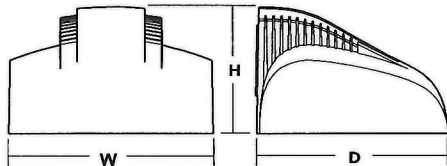
### Specifications

**Width:** 15"  
(38.1 cm)

**Depth:** 13-3/4"  
(34.9 cm)

**Height:** 9-1/4"  
(25.5 cm)

**Weight (max):** 34 lbs  
(15.4 kg)



### Introduction

The Aeries™ family combines sleek, fluid forms and crisp edges into a striking architectural aesthetic that can be echoed throughout entire sites.

The ASW1 LED integrates the latest LED technology with the designer aesthetic of the Aeries™ family for stylish, high-performance illumination that lasts. The ASW1 LED is ideal for replacing 100-400W metal halide in area lighting applications with typical energy savings of 65% and expected service life of over 100,000 hours.

### Ordering Information

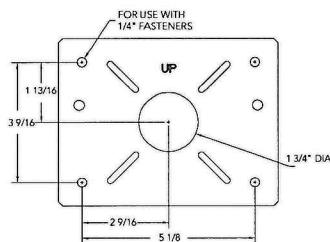
EXAMPLE: ASW1 LED 42C 700 40K SR4 MVOLT DDBTXD

#### ASW1 LED

Series	LEDs	Drive Current	Color temperature	Distribution	Voltage	Mounting
ASW1 LED	42C 42 LEDs (one engine)	350 350mA	30K 3000 K	SR2 Type II	MVOLT <sup>1</sup> 277 <sup>1</sup>	<b>Shipped included</b> (blank) Surface mount  <b>Shipped separately</b> BBW Surface-mounted back box (for conduit entry) <sup>2</sup>
		530 530mA	40K 4000 K	SR3 Type III	120 <sup>1</sup> 347	
		700 700mA	50K 5000 K	SR4 Type IV	208 <sup>1</sup> 480	
					240 <sup>1</sup>	

Control Options	Other Options	Finish (required)
<b>Shipped installed</b> PE Photoelectric cell, button type <sup>3</sup> BL30 Bi-level switched dimming, 30% <sup>4,5</sup> BL50 Bi-level switched dimming, 50% <sup>4,5</sup> PNMTDD3 Part night, dim till dawn <sup>5</sup>	<b>Shipped installed</b> SF Single fuse (120, 277, 347V) <sup>1</sup> DF Double fuse (208, 240, 480V) <sup>1</sup> DFL Diffusing lens  <b>Shipped separately<sup>2</sup></b> VG Vandal guard WG Wire guard	DDBXD Dark bronze DBLXD Black DNAXD Natural aluminum DWHXD White DDBTXD Textured dark bronze DBLTXD Textured black DNATXD Textured natural aluminum DWHGXD Textured white
PNMT5D3 Part night, dim 5 hrs <sup>5</sup> PNMT6D3 Part night, dim 6 hrs <sup>5</sup> PNMT7D3 Part night, dim 7 hrs <sup>5</sup> DMG 0-10v dimming wires pulled outside fixture (for use with an external control, ordered separately) <sup>6</sup>		

### Drilling



### Accessories

Ordered and shipped separately.

- ASW1BBW DDBXD U Back box accessory (specify finish)
- ASW1WG U Wire guard accessory
- ASW1VG U Vandal guard accessory

### NOTES

- MVOLT driver operates on any line voltage from 120-277V (50/60 Hz). Single fuse (SF) requires 120 or 277 voltage option. Double fuse (DF) requires 208 or 240 voltage option.
- Also available as a separate accessory; see Accessories information at left.
- Photocontrol (PE) requires 120, 208, 240, 277 or 347 voltage option. Must be ordered with fixture; cannot be field installed.
- Requires an additional switched line.
- Dimming driver standard. Not available with 347V or 480V.
- Not available with 347V, 480V, BL30, BL50 or PNMT options.



# MILLENIUM AURACYL™ SCNCE

## MLAS813 SERIES

W3

**PROJECT INFORMATION**

Job Name EXECUTIVE  
 Fixture Type DIRECTOR  
 Catalog Number \_\_\_\_\_  
 Approved by APPROVAL

**PRODUCT FEATURES:**

- » Surface wall mount – 8"Wx13"H
- » Marine grade aluminum housing with die-cast end caps
- » Peace of Mind Guarantee®
- » UL certified IP64 per IEC 60598



4-30-2021 aud  
 Date By

**SPECIFICATIONS**

**HOUSING:** Marine grade extruded aluminum. Marine grade die-cast aluminum end caps. TGIC polyester powder coat – 5-stage pre-treatment; Salt spray test: 1,000 hours.

**OUTER LENS:** Thermoformed, UV-stabilized impact resistant polycarbonate, and frost or clear acrylic. See Ordering Information for options. Nominal thickness .125".

**INNER LENS:** UV-stabilized, high impact resistant, extruded 100% DR acrylic frost lens. Nominal thickness. 100". Lens secured in place by lens frame.

**REFLECTOR:** Die-formed marine grade aluminum. Full reflector/wire cover – 92% reflectivity.

**HARDWARE:** Four stainless steel Torx® with center pin fasteners. Internal brackets and fasteners are non-corrosive. Surface Conduit Adapter (SCA) accessory – aluminum trim frame assembly with integral J-box; finished to match lens frame. Water-tight conduit fittings supplied by others.

**ELECTRICAL:** Available 3500K, 4000K and 5000K color temperatures, 82 CRI. 120-277VAC, 50/60Hz electrical input with serviceable high power factor electronic, constant-current driver (<20% THD, >0.95 PF). Standard 0-10V dimming with 10-100% range, maximum driver source of 250 µA.

**PHOTOMETRICS:** Photometry tested to the IESNA LM-79-08 standard by an ILAC/ISO17025 accredited laboratory. For photometric information, go to [www.kenall.com](http://www.kenall.com).

**WARRANTY:** Limited five (5) year LED warranty.

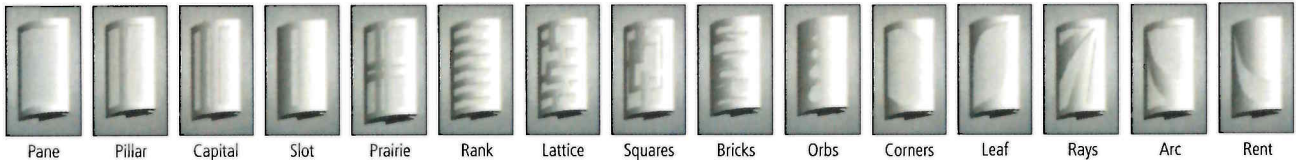
**LISTINGS:** UL and CUL listed for Wet Location – vertical wall mount only. UL certified IP64 per IEC 60598. ADA Compliant (SCA Option is non-ADA).



**ORDERING INFORMATION (Ex: MLAS813-RNK-PP-BR-1-32P-DV-FS)**

Model	Frame Type	Outer Lens	Finish	Lamp & Driver	Options
<b>MLAS813</b>	<b>Frame Type</b> PAN Pane PLR Pillar CPL Capital SLT Slot PRA Prairie RNK Rank LAT Lattice SQR Squares BRK Bricks ORB Orbs CRN Corners LEF Leaf RAY Rays ARC Arc RNT Rent	<b>Outer Lens</b> AS† Frosted Acrylic CAP† Clear Acrylic w/Inner Perforation painted to match housing PP Pearlescent Polycarbonate †n/a with Peace of Mind Guarantee®	<b>Finish</b> MB Matte Black MW Matte White WS Warm Satin Painted Anodized CS Cool Satin Painted Anodized BR Bronze DB Dark Bronze LG Light Gray FG Forest Green CC Custom Color (Consult factory)	<b>Lamp &amp; Driver Type</b> 12L35K-DCC-DV 12 Watt 3500K LED 12L40K-DCC-DV 12 Watt 4000K LED 12L50K-DCC-DV 12 Watt 5000K LED	<b>Options</b> 9500 Torx® Screwdriver D-0552 Torx® Driver Bit FS Single Fuse & Holder SCA Surface Conduit Adapter (non-ADA compliant)

**FRAME TYPE**



**OUTER LENS OPTIONS**



[www.kenall.com](http://www.kenall.com) | P: 800-4-Kenall | F: 262-891-9701 | 10200 55th Street Kenosha, Wisconsin 53144, USA

A brand of **Legrand**

This product complies with the Buy American Act: manufactured in the United States with more than 50% of the component cost of US origin. It may be covered by patents found at [www.kenall.com/patents](http://www.kenall.com/patents). Content of specification sheets is subject to change; please consult [www.kenall.com](http://www.kenall.com) for current product details. ©2019 Kenall Mfg. Co.