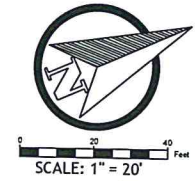
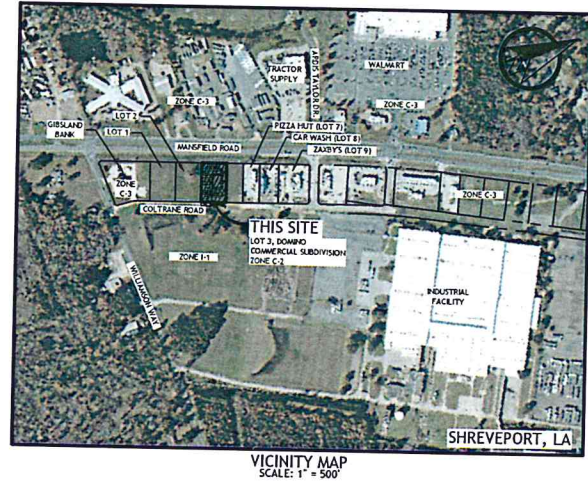


SPECIAL PETROLEUM LINE INSTRUCTIONS
 PLEASE REFER TO SHEET C4.0 FOR SPECIFIC INSTRUCTIONS AND REQUIREMENTS FOR WORK TO BE PERFORMED WITHIN THE PETROLEUM PIPELINE RIGHT-OF-WAY PRIOR TO COMMENCEMENT OF CONSTRUCTION



- LEGEND:**
- PROPERTY LINE
 - ADJACENT PROPERTY LINE
 - CENTERLINE
 - EASEMENT
 - FIRE WATER LINE
 - WATER LINE
 - SANITARY SEWER
 - UNDERGROUND COMM.
 - FIBER OPTIC
 - UNDERGROUND POWER
 - OVERHEAD WIRES
 - STORM DRAIN
 - EX. INDEX CONTOUR
 - EX. INTERMEDIATE CONTOUR
 - EX. SPOT ELEVATION
 - INDEX CONTOUR
 - INTERMEDIATE CONTOUR
 - PROPOSED ELEVATION
 - MATCH EXISTING
 - DRAINAGE FLOW
 - LIGHT POLE
 - POWER POLE
 - CUT ANCHOR
 - SIGN
 - ELECTRICAL BOX
 - FIBER OPTIC BOX
 - GAS METER
 - GAS VALVE
 - WATER METER
 - WATER VALVE
 - BACKFLOW PREVENTER
 - FIRE HYDRANT
 - FIRE DEPT. CONNECTION
 - POST INDICATOR VALVE
 - STORM DRAINAGE MANHOLE
 - DRAINAGE W/LET
 - STORM DRAIN CLEANOUT
 - SANITARY MANHOLE
 - SANITARY CLEANOUT
 - SEWER VALVE
 - BENCHMARK
 - HANDICAP PARKING SPACE
 - OUTFALL PROTECTION
 - CONCRETE SURFACE
 - EX. CONCRETE ROAD SURFACE
 - EX. CONCRETE TO BE IMPROVED
 - PROPOSED CONCRETE (BY OTHERS)
 - LANDSCAPE AREA



DESCRIPTION:
 LOT 3, DOMINO COMMERCIAL SUBDIVISION, RECORDED IN BOOK 7050, PAGES 229-232, CADDO PARISH, LOUISIANA

PARKING:
 REQUIRED: 1/300 SF GROSS FLOOR AREA (10 TOTAL)
 PROVIDED: 43 REGULAR PARKING SPACES
 2 HANDICAP SPACES (inc. 1 VAN SPACE)
 45 TOTAL

FLOOD ZONE:
 THE SURVEYED AREA LIES WITHIN FLOOD ZONE X (UNSHADED), ACCORDING TO FEMA FLOOD INSURANCE RATE MAP PANEL No. 22017C0464H, DATED 5/19/2014. ZONE X IS DETERMINED TO BE OUTSIDE THE 0.2% ANNUAL CHANCE FLOODPLAIN.

SITE DATA:
 Jurisdiction: CITY OF SHREVEPORT, LA
 Zoning - C2

Site Area - 1.063 acres ±
 Setbacks: 30' FRONT
 0' SIDE
 30' REAR
 40' BUILDING HEIGHT MAX

Zoning Source: SHREVEPORT, LA MUNICODÉ

EXECUTIVE DIRECTOR _____ **DATE** _____

OWNER:
 E. ALEJANDRO ORFANOS
 BEST CHOICE RESTAURANTS
 4515 LYNDON B. JOHNSON FWY
 FARMERS BRANCH, TEXAS 75244

2020 ALL RIGHTS RESERVED BY GDOM ARCHITECTS, PC. UNAUTHORIZED USE OR REPRODUCTION IS PROHIBITED WITHOUT WRITTEN CONSENT FROM GDOM ARCHITECTS, PC.

McAlister's Deli | Shreveport
 9637 Mansfield Road
 Shreveport, Louisiana 71118

PROJECT: 0584.0720
 CONSTRUCTION DOCUMENTS: 10.30.20
 REVISED PER PERMITTING REVIEW COMMENTS: 2.11.21



EXECUTIVE DIRECTOR APPROVAL

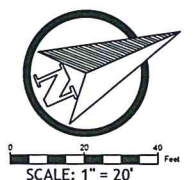
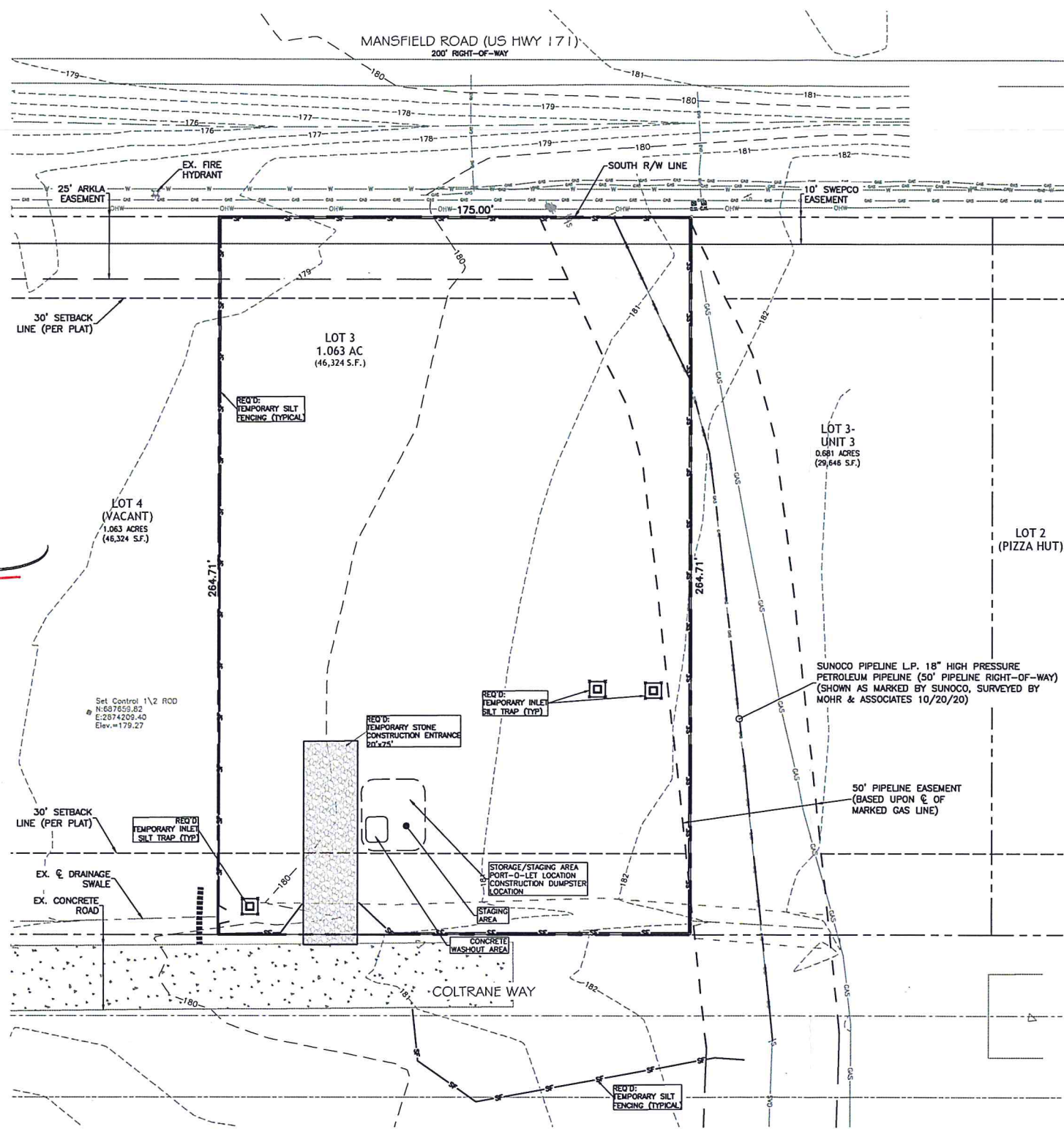
Date 3-1-2021 By [Signature]

FOR PERMITTING ONLY

CIVIL SITE PLAN
 SCALE: 1" = 20'



C2.0
 CIVIL SITE PLAN



- LEGEND:**
- PROPERTY LINE
 - ADJACENT PROPERTY LINE
 - CENTERLINE
 - EASEMENT
 - FIRE WATER LINE
 - WATER LINE
 - SANITARY SEWER
 - UNDERGROUND COMM.
 - FIBER OPTIC
 - UNDERGROUND POWER
 - OVERHEAD WIRES
 - STORM DRAIN
 - EX. INDEX CONTOUR
 - EX. INTERMEDIATE CONTOUR
 - EX. SPOT ELEVATION
 - INDEX CONTOUR
 - INTERMEDIATE CONTOUR
 - PROPOSED ELEVATION
 - MATCH EXISTING
 - DRAINAGE FLOW
 - LIGHT POLE
 - POWER POLE
 - GUY ANCHOR
 - SIGN
 - ELECTRICAL BOX
 - FIBER OPTIC BOX
 - GAS METER
 - GAS VALVE
 - WATER METER
 - WATER VALVE
 - BACKFLOW PREVENTER
 - FIRE HYDRANT
 - FIRE DEPT. CONNECTION
 - POST INDICATOR VALVE
 - STORM DRAIN MANHOLE
 - DRAINAGE INLET
 - STORM DRAIN CLEANOUT
 - SANITARY MANHOLE
 - SANITARY CLEANOUT
 - SEWER VALVE
 - BENCHMARK
 - HANDICAP PARKING SPACE
 - OUTFALL PROTECTION
 - CONCRETE SURFACE
 - EX. CONCRETE ROAD SURFACE
 - EX. CONCRETE TO BE IMPROVED
 - PROPOSED CONCRETE (BY OTHERS)
 - LANDSCAPE AREA

- EROSION CONTROL LEGEND:**
- SILT FENCE
 - STABILIZED CONSTRUCTION ENTRANCE
 - INLET PROTECTION
 - TEMPORARY BERM
 - 215 --- EX. INDEX CONTOUR
 - 214 --- EX. INTERMEDIATE CONTOUR
- LAND DISTURBANCE:**
TOTAL DISTURBED ACREAGE: 0.953± ACRES

SPECIAL PETROLEUM LINE INSTRUCTIONS
PLEASE REFER TO SHEET C4.0 FOR SPECIFIC INSTRUCTIONS AND REQUIREMENTS FOR WORK TO BE PERFORMED WITHIN THE PETROLEUM PIPELINE RIGHT-OF-WAY PRIOR TO COMMENCEMENT OF CONSTRUCTION

EXECUTIVE DIRECTOR APPROVAL
Date 3.1.2021 By [Signature]

EXECUTIVE DIRECTOR _____ DATE _____
FOR PERMITTING ONLY

EXISTING CONDITIONS, EROSION & SEDIMENTATION CONTROL PLAN

SCALE: 1" = 20'



OWNER:
E. ALEJANDRO ORFANOS
BEST CHOICE RESTAURANTS
4515 LYNDON B. JOHNSON FWY
FARMERS BRANCH, TEXAS 75244

2020 ALL RIGHTS RESERVED BY ODOM ARCHITECTS, P.C. UNAUTHORIZED USE OR REPRODUCTION IS PROHIBITED WITHOUT WRITTEN CONSENT FROM ODOM ARCHITECTS, P.C.

PROJECT 0684.0720
CONSTRUCTION DOCUMENTS 10.30.20
REVISED PER PERMITTING REVIEW COMMENTS 2.11.21

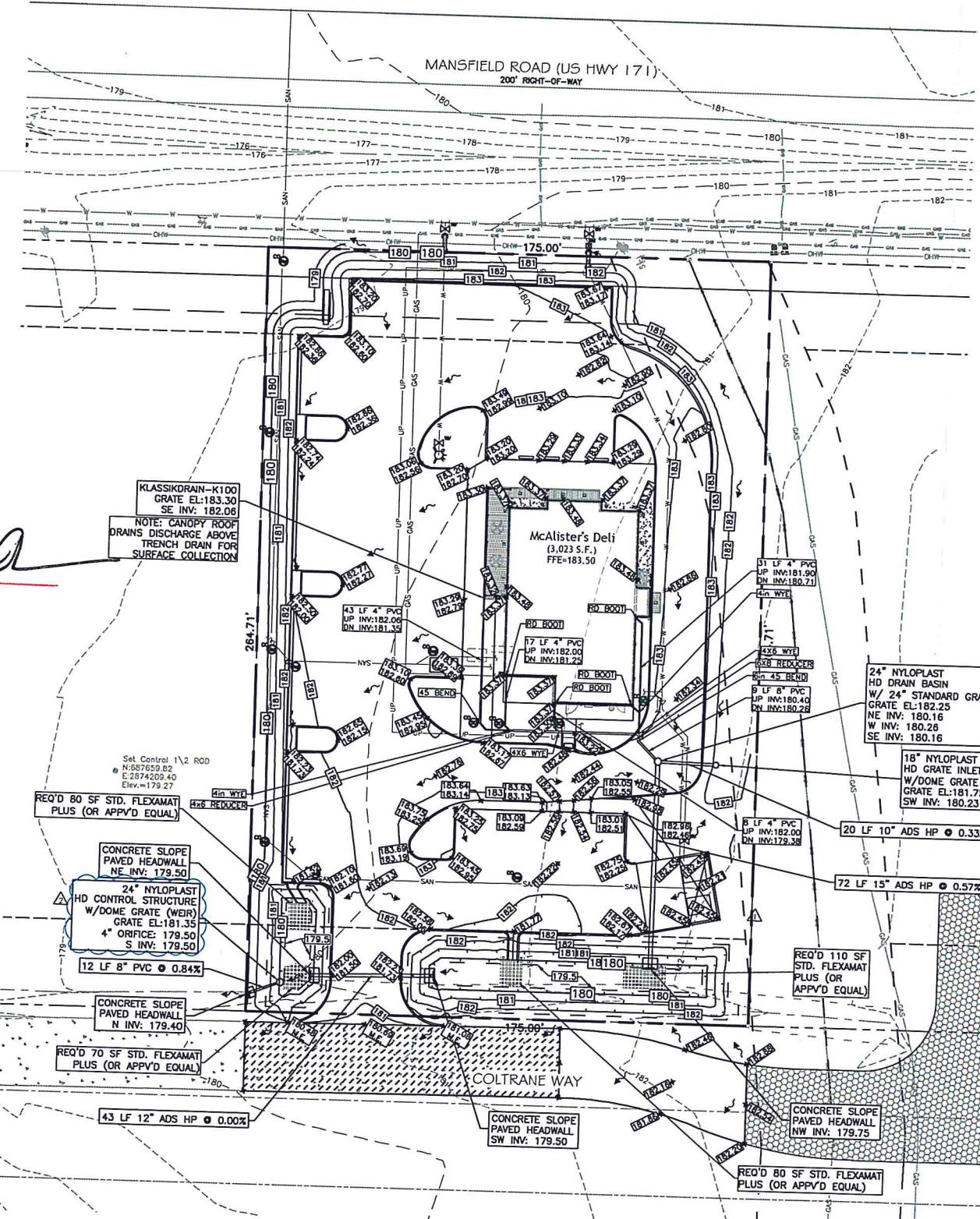
McAlister's Deli | Shreveport
9637 Mansfield Road
Shreveport, Louisiana 71118



SHEET:

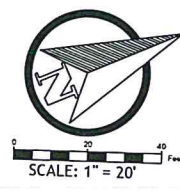
C1.0
EX. CONDITIONS & EROSION CONTROL PLAN

21-9-C



**EXECUTIVE
DIRECTOR
APPROVAL**

3-1-2021 *AM*
Date By



LEGEND:

—	PROPERTY LINE	—	FIRE HYDRANT
- - -	ADJACENT PROPERTY LINE	—	FIRE DEPT. CONNECTION
—	CENTERLINE	—	POST INDICATOR VALVE
—	EASEMENT	—	STORM DRAINAGE MANHOLE
—	FIRE WATER LINE	—	DRAINAGE INLET
—	WATER LINE	—	STORM DRAIN CLEANOUT
—	SANITARY SEWER	—	SANITARY MANHOLE
—	UNDERGROUND COMM.	—	SANITARY CLEANOUT
—	FIBER OPTIC	—	SEWER VALVE
—	UNDERGROUND POWER	—	BENCHMARK
—	OVERHEAD WIRES	—	HANDICAP PARKING SPACE
—	STORM DRAIN	—	OUTFALL PROTECTION
—	EX. INDEX CONTOUR	—	CONCRETE SURFACE
—	EX. INTERMEDIATE CONTOUR	—	EX. CONCRETE ROAD SURFACE
—	EX. SPOT ELEVATION	—	EX. CONCRETE TO BE IMPROVED
—	INDEX CONTOUR	—	PROPOSED CONCRETE (BY OTHERS)
—	INTERMEDIATE CONTOUR	—	LANDSCAPE AREA
—	PROPOSED ELEVATION		
—	MATCH EXISTING		
—	DRAINAGE FLOW		
—	LIGHT POLE		
—	POWER POLE		
—	GUY ANCHOR		
—	SEIK		
—	ELECTRICAL BOX		
—	FIBER OPTIC BOX		
—	GAS METER		
—	GAS VALVE		
—	WATER METER		
—	WATER VALVE		
—	BACKFLOW PREVENTER		

T20083 Storm STRUCTURE TABLE

NAME:	STRUCTURE TYPE	DETAILS:	PIPES IN:	PIPES OUT:	NOTE:
CS 1	24" NYLOPLAST HD CONTROL STRUCTURE W/DOME GRATE (WEIR)	TOP = 181.35 N: 687685.18 E: 2874298.72	4" 4.0 inch PVC Pipe, INV IN = 179.50	8" PVC, INV OUT = 179.50,	
GI 1	24" NYLOPLAST HD DRAIN BASIN W/ 24" STANDARD GRATE	TOP = 182.25 N: 687835.60 E: 2874277.73	10" ADS HP, INV IN = 180.16 8" PVC, INV IN = 180.26	15" ADS HP, INV OUT = 180.16,	
GI 2	18" NYLOPLAST HD GRATE INLET W/DOME GRATE	TOP = 181.75 N: 687854.04 E: 2874286.47		10" ADS HP, INV OUT = 180.23,	
HW 1	CONCRETE SLOPE PAVED HEADWALL	TOP = 181.78 N: 687873.33 E: 2874298.04	8" PVC, INV IN = 179.40		
HW 2	CONCRETE SLOPE PAVED HEADWALL	TOP = 178.61 N: 687695.87 E: 2874300.48	12" ADS HP, INV IN = 179.50		
HW 4	CONCRETE SLOPE PAVED HEADWALL	TOP = 181.78 N: 687808.08 E: 2874342.98	15" ADS HP, INV IN = 179.75		
HW3	CONCRETE SLOPE PAVED HEADWALL	TOP = 181.02 N: 687735.49 E: 2874316.94	12" ADS HP, INV OUT = 179.50,		
TD 1	KLASSIKDRAIN-K100	TOP = 183.30 N: 687600.94 E: 2874202.24	4" PVC, INV OUT = 182.06,		8" to 1" to 10" to 10" (BY 4" BOTTOM OUTLET). 8" (BY 4" CAP). 4" (BY STRAIGHT) BOTTOM OUTLET CONNECTS TO 4" LONG SLOPE TO ROAD

- CONSTRUCTION NOTES:**
1. THE CONTRACTOR SHALL PROVIDE TO THE PROJECT ENGINEER "AS-BUILT" RECORD DRAWINGS FOR VERIFICATION AND APPROVAL ONE WEEK PRIOR TO REQUESTING A FINAL INSPECTION.
 2. THE CONTRACTOR SHALL CONTROL STORMWATER DURING ALL PHASES OF CONSTRUCTION AND TAKE ADEQUATE MEASURES TO PREVENT SEDIMENT WASH OVER THE EXISTING PARKING AREAS OR BUILDUP IN THE EXISTING PROTECTED DRAINAGE FEATURES.
 3. THE CONTRACTOR SHALL MAINTAIN RECORD DRAWINGS DURING CONSTRUCTION WHICH SHOW "AS-BUILT" CONDITIONS OF ALL WORK INCLUDING PIPING, DRAINAGE STRUCTURES, TOPO OF OUTLET STRUCTURES, DIMENSIONS, ELEVATIONS, GRADING, ETC.
 4. ALL ASPECTS OF THE STORMWATER/DRAINAGE COMPONENTS AND/OR TRANSPORTATION COMPONENTS SHALL BE COMPLETED PRIOR TO ISSUANCE OF A FINAL CERTIFICATE OF OCCUPANCY.
 5. DISTURBED AREAS NOT SHOWN TO BE SODDED OR PAVED SHALL BE SEEDED, MULCHED & FERTILIZED.
 6. CROSS SLOPE ON CONCRETE WALKS & HANDICAP PARKING SPACES SHALL NOT EXCEED 2%.
 7. ALL DRIVE LANES SHOWN HEREON SHALL ADHERE TO THE HEAVY DUTY CONCRETE SECTION (SEE DETAIL 4, CS.0) ALL PARKING AREAS MAY ADHERE TO THE LIGHT DUTY CONCRETE SECTION (SEE DETAIL 5, CS.0).
 8. THE PORTION OF COLTRANE WAY REQUIRED BY THIS CONTRACT SHALL ADHERE TO THE ROADWAY DETAILS (BY MOHR AND ASSOCIATES, INC.) SHOWN ON SHEET CS.5.

SPECIAL PETROLEUM LINE INSTRUCTIONS
PLEASE REFER TO SHEET C4.0 FOR SPECIFIC INSTRUCTIONS AND REQUIREMENTS FOR WORK TO BE PERFORMED WITHIN THE PETROLEUM PIPELINE RIGHT-OF-WAY PRIOR TO COMMENCEMENT OF CONSTRUCTION

2020 ALL RIGHTS RESERVED BY ODOM ARCHITECTS, P.C. UNAUTHORIZED USE OR REPRODUCTION IS PROHIBITED WITHOUT WRITTEN CONSENT FROM ODOM ARCHITECTS, P.C.

McAlister's Deli | Shreveport
9637 Mansfield Road
Shreveport, Louisiana 71118

PROJECT 0564.0720
CONSTRUCTION DOCUMENTS 10.30.20
REVISED PER HEALTH DEPT. COMMENTS 12.04.20
REVISED PER PERMITTING REVIEW COMMENTS 2.11.21



SHEET:

C3.0

GRADING & DRAINAGE PLAN

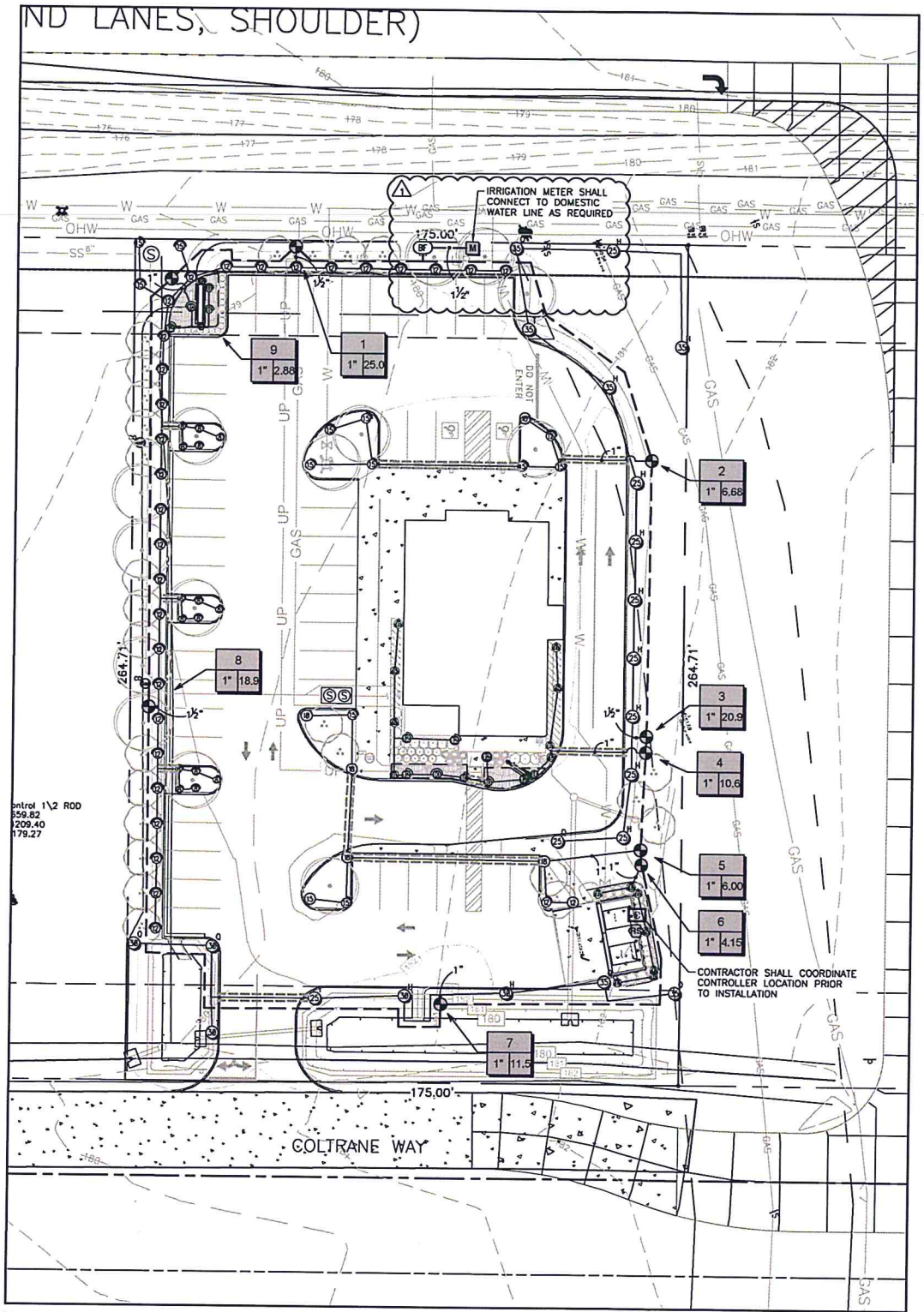
FOR PERMITTING ONLY
GRADING AND DRAINAGE PLAN

SCALE: 1" = 20'



EXECUTIVE DIRECTOR

DATE



1 IRRIGATION PLAN
Scale: 1" = 20'

NOTE:
MAINLINE AND VALVES SHOWN OUTSIDE OF TRENCH FOR GRAPHIC CLARITY. ALL EQUIPMENT AND PIPE SHALL BE WITHIN PROPERTY BOUNDARIES UNLESS OTHERWISE NOTED. SLEEVE SIZES TO BE DETERMINED BY CONTRACTOR.

IRRIGATION SCHEDULE					
SYMBOL	MANUFACTURER/MODEL/DESCRIPTION	QTY	PSI		
⊙ ⊙ ⊙ ⊙ ⊙	Rain Bird 1806-SAM-PRS 8 Series MPR Turf Spray 6.0" Pop-Up Sprinkler with Co-Molded Wiper Seal, 1/2" NPT Female Threaded Inlet, With Seal-A-Matic Check Valve, and Pressure Regulating.	74	25		
⊙ ⊙ ⊙ ⊙ ⊙	Rain Bird 1806-SAM-PRS 10 Series MPR Turf Spray 6.0" Pop-Up Sprinkler with Co-Molded Wiper Seal, 1/2" NPT Female Threaded Inlet, With Seal-A-Matic Check Valve, and Pressure Regulating.	10	25		
⊙ ⊙ ⊙ ⊙ ⊙	Rain Bird 1806-SAM-PRS 12 Series MPR Turf Spray 6.0" Pop-Up Sprinkler with Co-Molded Wiper Seal, 1/2" NPT Female Threaded Inlet, With Seal-A-Matic Check Valve, and Pressure Regulating.	33	25		
⊙ ⊙ ⊙ ⊙ ⊙	Rain Bird 1806-SAM-PRS 15 Series MPR Turf Spray 6.0" Pop-Up Sprinkler with Co-Molded Wiper Seal, 1/2" NPT Female Threaded Inlet, With Seal-A-Matic Check Valve, and Pressure Regulating.	13	25		
⊙ ⊙ ⊙ ⊙ ⊙	Rain Bird 1806-SAM-PRS ADJ Turf Spray 6.0" Pop-Up Sprinkler with Co-Molded Wiper Seal, 1/2" NPT Female Threaded Inlet, With Seal-A-Matic Check Valve, and Pressure Regulating.	5	25		
⊙ ⊙ ⊙ ⊙ ⊙	Rain Bird 1806-SAM-PRS ADJ Turf Spray 6.0" Pop-Up Sprinkler with Co-Molded Wiper Seal, 1/2" NPT Female Threaded Inlet, With Seal-A-Matic Check Valve, and Pressure Regulating.	5	25		
⊙ ⊙ ⊙ ⊙ ⊙	Rain Bird 1812-SAM-PRS 15 Strip Series Shrub Spray 12.0" Pop-Up Sprinkler with Co-Molded Wiper Seal, 1/2" NPT Female Threaded Inlet, With Seal-A-Matic Check Valve, and Pressure Regulating Device.	15	30		
⊙ ⊙ ⊙ ⊙ ⊙	Rain Bird 1812-SAM-PRS 5 Series MPR Shrub Spray 12.0" Pop-Up Sprinkler with Co-Molded Wiper Seal, 1/2" NPT Female Threaded Inlet, With Seal-A-Matic Check Valve, and Pressure Regulating Device.	3	30		
⊙ ⊙ ⊙ ⊙ ⊙	Rain Bird 1812-SAM-PRS 8 Series MPR Shrub Spray 12.0" Pop-Up Sprinkler with Co-Molded Wiper Seal, 1/2" NPT Female Threaded Inlet, With Seal-A-Matic Check Valve, and Pressure Regulating Device.	4	30		
⊙ ⊙ ⊙ ⊙ ⊙	Rain Bird 1812-SAM-PRS 10 Series MPR Shrub Spray 12.0" Pop-Up Sprinkler with Co-Molded Wiper Seal, 1/2" NPT Female Threaded Inlet, With Seal-A-Matic Check Valve, and Pressure Regulating Device.	10	30		
⊙ ⊙ ⊙ ⊙ ⊙	Rain Bird 1812-SAM-PRS 12 Series MPR Shrub Spray 12.0" Pop-Up Sprinkler with Co-Molded Wiper Seal, 1/2" NPT Female Threaded Inlet, With Seal-A-Matic Check Valve, and Pressure Regulating Device.	5	30		
⊙ ⊙ ⊙ ⊙ ⊙	Rain Bird 1812-SAM-PRS 15 Series MPR Shrub Spray 12.0" Pop-Up Sprinkler with Co-Molded Wiper Seal, 1/2" NPT Female Threaded Inlet, With Seal-A-Matic Check Valve, and Pressure Regulating Device.	1	30		
⊙ ⊙ ⊙ ⊙ ⊙	Rain Bird 1812-SAM-PRS ADJ Shrub Spray 12.0" Pop-Up Sprinkler with Co-Molded Wiper Seal, 1/2" NPT Female Threaded Inlet, With Seal-A-Matic Check Valve, and Pressure Regulating Device.	1	30		
⊙ ⊙ ⊙ ⊙ ⊙	Rain Bird 1812-SAM-PRS ADJ Shrub Spray 12.0" Pop-Up Sprinkler with Co-Molded Wiper Seal, 1/2" NPT Female Threaded Inlet, With Seal-A-Matic Check Valve, and Pressure Regulating Device.	5	30		
SYMBOL	MANUFACTURER/MODEL/DESCRIPTION	QTY	PSI	GPM	RADIUS
⊙	Rain Bird 5006-SAM-R-MPR Turf Rotor, 6.0" Pop-Up, Plastic Riser, Matched Precipitation Rotor (MPR nozzle), Arc and Radius as per Symbol, 25 ft red, 30 ft green, 35 ft beige. With Seal-A-Matic Check Valve, Pressure Regulating.	10	25		23'
⊙	Rain Bird 5006-SAM-R-MPR Turf Rotor, 6.0" Pop-Up, Plastic Riser, Matched Precipitation Rotor (MPR nozzle), Arc and Radius as per Symbol, 25 ft red, 30 ft green, 35 ft beige. With Seal-A-Matic Check Valve, Pressure Regulating.	5	25		29'
⊙	Rain Bird 5006-SAM-R-MPR Turf Rotor, 6.0" Pop-Up, Plastic Riser, Matched Precipitation Rotor (MPR nozzle), Arc and Radius as per Symbol, 25 ft red, 30 ft green, 35 ft beige. With Seal-A-Matic Check Valve, Pressure Regulating.	6	25		32'
SYMBOL	MANUFACTURER/MODEL/DESCRIPTION	QTY			
⊙	Rain Bird PGA 1" Electric Remote Control Valve	8			
⊙	Watts 007 1" max. flow rate is 7.5 fts.	1			
⊙	Water Meter 1" Basis of design 37.5 GPM @ 54.93 PSI, contractor to verify prior to installation	1			
---	Irrigation Lateral Line: PVC Class 200 SDR 21 Only lateral transition pipe sizes 1 1/4" and above are indicated on the plan, with all others being 1" in size.	1,679 LI.			
---	Irrigation Mainline: PVC Class 200 SDR 21	789.0 LI.			
---	Pipe Sleeve: PVC Schedule 40	221.0 LI.			
⊙	Valve Outlet				
⊙	Valve Number				
⊙	Valve Flow				
⊙	Valve Size				

QUANTITY TAKEOFF DISCLAIMER:
QUANTITIES NOTED ON PLANS ARE OFFERED AS A CONVENIENCE TO THE CONTRACTOR FOR BID PURPOSES ONLY. CONTRACTOR SHALL VERIFY ALL QUANTITIES AND REPORT ANY DISCREPANCIES TO THE LANDSCAPE ARCHITECT.



2020 ALL RIGHTS RESERVED BY ODOM ARCHITECTS, P.C. UNAUTHORIZED USE OR REPRODUCTION IS PROHIBITED WITHOUT WRITTEN CONSENT FROM ODOM ARCHITECTS, P.C.

McAlister's Deli | Shreveport
9637 Mansfield Road
Shreveport, Louisiana 71118

PROJECT 0864.0720
CONSTRUCTION DOCUMENTS 10.30.20

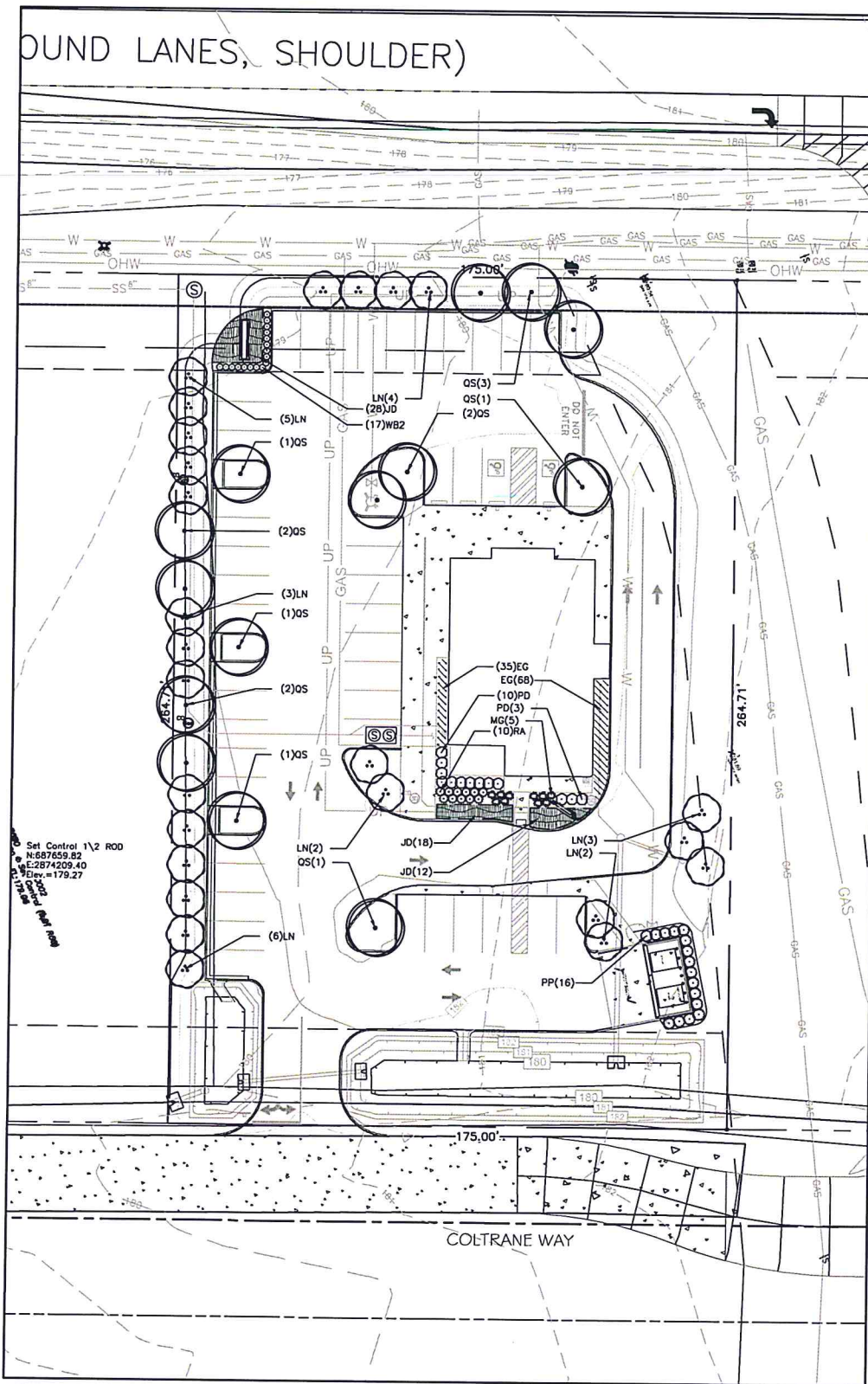


SHEET:

LI100

EXECUTIVE
DIRECTOR
APPROVAL
Date 3-1-2021 By *all*

21-9-c

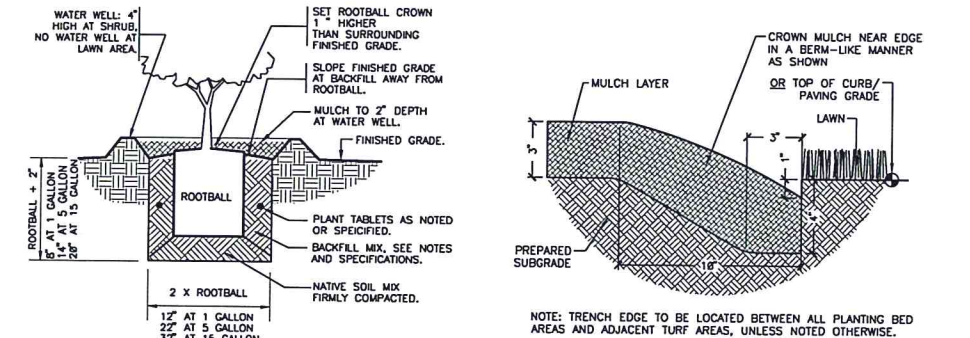


1 LANDSCAPE PLANTING PLAN AND DETAILS
Scale: 1" = 20'

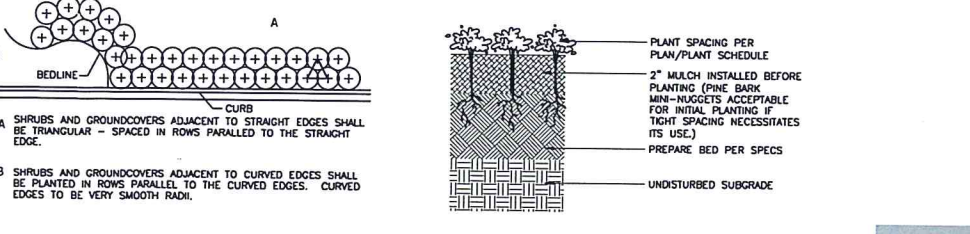
PLANT SCHEDULE

TREES	CODE	QTY	BOTANICAL NAME	COMMON NAME	CONT	CAL	HT	REMARKS	
LN	LN	25	Lagerstroemia indica 'Natchez'	'Natchez' Crape Myrtle	30 gal		10-12'	Minimum 3 trunks; full head	
OS	OS	14	Quercus shumardii	Shumard Red Oak	30 gal	2.5-3"	10-12'	Full head, specimen quality	
SHRUBS	CODE	QTY	BOTANICAL NAME	COMMON NAME	CONT	HT	W	SPACING	REMARKS
RA	RA	11	Abelia x grandiflora 'Rose Creek'	Rose Creek Abelia	3 gal	18"-24"		35" o.c.	Full Form
WB2	WB2	17	Buxus microphylla 'Wintergreen'	Wintergreen Boxwood	7 gal	18"-24"		24" o.c.	Round and Full
PD	PD	13	Loropetalum chinense 'Purple Diamond'	Purple Diamond Loropetalum	3 gal	18"-24"		42" o.c.	Full Form
PP	PP	18	Podocarpus macrophyllus 'maki'	Shrubby Yew Podocarpus	15 gal	3'-4'		42" o.c.	Full Form
GRASSES	CODE	QTY	BOTANICAL NAME	COMMON NAME	CONT	HT	W	SPACING	REMARKS
MG	MG	10	Miscanthus sinensis 'Adagio'	Adagio Maiden Grass	3 gal	18"-24"		35" o.c.	Full Form
SHRUB AREAS	CODE	QTY	BOTANICAL NAME	COMMON NAME	CONT	HT	W	SPACING	REMARKS
JD	JD	61	Juniperus chinensis 'Parsonii'	Parson's Juniper	3 gal			30" o.c.	Full Form
GROUND COVERS	CODE	QTY	BOTANICAL NAME	COMMON NAME	CONT	HT	W	SPACING	REMARKS
EG	EG	103	Liriope muscari 'Emerald Goddess'	Emerald Goddess Liriope	1 gal			18" o.c.	
SOD/SEED	CODE	QTY	BOTANICAL NAME	COMMON NAME	CONT	HT	W	SPACING	REMARKS
SOD	SOD	15,756 sf	Cynodon dactylon 'Tifway 419'	Tifway 419 Bermuda Grass	sod				

QUANTITY TAKEOFF DISCLAIMER:
QUANTITIES NOTED ON PLANS ARE OFFERED AS A CONVENIENCE TO THE CONTRACTOR FOR BID PURPOSES ONLY. CONTRACTOR SHALL VERIFY ALL QUANTITIES AND REPORT ANY DISCREPANCIES TO THE LANDSCAPE ARCHITECT.



2 SHRUB PLANTING 1" = 1'-0" FX-PL-FX-SHRB-07
3 TRENCH EDGE 3" = 1'-0" 329413.23-82



4 TYPICAL PLANT SPACING NOT TO SCALE 329399-04
5 GROUNDCOVER PLANTING 3" = 1'-0"

EXECUTIVE
DIRECTOR
APPROVAL
Date 3-1-2021
By [Signature]



2020 ALL RIGHTS RESERVED BY ODOM ARCHITECTS, PC. UNAUTHORIZED USE OR REPRODUCTION IS PROHIBITED WITHOUT WRITTEN CONSENT FROM ODOM ARCHITECTS, PC.

McAlister's Deli | Shreveport
9637 Mansfield Road
Shreveport, Louisiana 71118

PROJECT 0584.0720
CONSTRUCTION DOCUMENTS 10.30.20

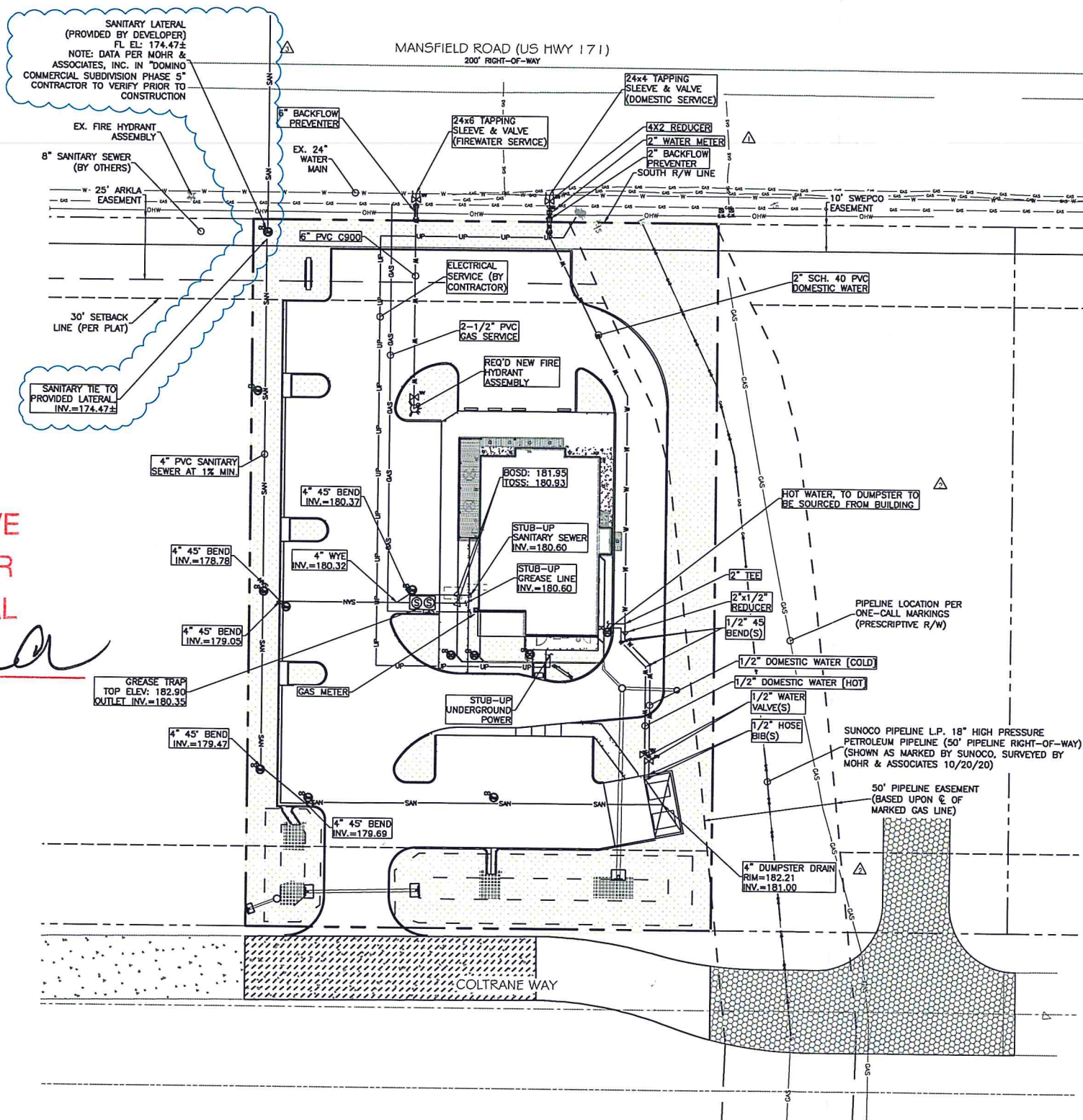


4877 Pecan Ridge E. Mobile, AL 36619
1: 251.607.0709 F: 251.607.0720
odom@odomarchitects.com

SHEET:

LP100





- LEGEND:**
- PROPERTY LINE
 - ADJACENT PROPERTY LINE
 - EASEMENT
 - FIRE WATER LINE
 - WATER LINE
 - SANITARY SEWER
 - UNDERGROUND CONDUIT
 - FIBER OPTIC
 - OVERHEAD WIRE
 - OHW
 - STORM DRAIN
 - EX. INDEX CONTOUR
 - EX. INTERMEDIATE CONTOUR
 - EX. SPOT ELEVATION
 - INDEX CONTOUR
 - INTERMEDIATE CONTOUR
 - PROPOSED ELEVATION
 - MATCH EXISTING
 - DRAINAGE FLOW
 - LIGHT POLE
 - POWER POLE
 - GUY ANCHOR
 - SIGN
 - ELECTRICAL BOX
 - FIBER OPTIC BOX
 - GAS METER
 - GAS VALVE
 - WATER METER
 - BACKFLOW PREVENTER
 - FIRE HYDRANT
 - FIRE DEPT. CONNECTION
 - POST INDICATOR VALVE
 - STORM DRAIN MANHOLE
 - DRAINAGE INLET
 - STORM DRAIN CLEANOUT
 - SANITARY MANHOLE
 - SANITARY CLEANOUT
 - SEWER VALVE
 - BENCHMARK
 - HANDICAP PARKING SPACE
 - OUTFALL PROTECTION
 - CONCRETE SURFACE
 - EX. CONCRETE ROAD SURFACE
 - EX. CONCRETE TO BE IMPROVED
 - PROPOSED CONCRETE (BY OTHERS)
 - LANDSCAPE AREA

CONSTRUCTION NOTES:

- SEE SHEET C6.0 FOR SITE/CONSTRUCTION NOTES.
- CONTRACTOR SHALL STUB OUT SANITARY AND WATER CONNECTIONS WITHIN 5' OF THE PROPOSED BUILDING. COORDINATE CONNECTIONS WITH PLUMBING PLANS.
- CONTRACTOR SHALL HAND EXCAVATE TO EXPOSE EXISTING UTILITIES AT ALL CONNECTION POINTS AND ANY LOCATION WHERE A PROPOSED UTILITY LINE CROSSES AN EXISTING UTILITY. IT IS THE RESPONSIBILITY OF THE CONTRACTOR TO HAVE ALL UTILITIES MARKED PRIOR TO CONSTRUCTION. ANY DAMAGE TO EXISTING UTILITIES SHALL BE REPAIRED AT THE CONTRACTOR'S EXPENSE.
- ALL UNDERGROUND UTILITIES TO BE BURIED AT A MIN. DEPTH OF 36" AND INCLUDE TRACER WIRE BURIED AT HALF DEPTH UNLESS OTHERWISE SPECIFIED.
- ALL VALVES AND BACKFLOW PREVENTERS SHALL INCLUDE APPROPRIATELY SIZED VAULTS, RISERS OR COVERS AS THE FINISH SURFACE REQUIRES.
- ALL CLEANOUTS SHALL BE CAPPED AT 2" ABOVE FINAL FINISH GRADE.
- THE PLANS SHOWN HEREON SHALL BE COORDINATED WITH THE PLUMBING PLANS PRIOR TO CONSTRUCTION. ANY DISCREPANCIES TO BE BROUGHT TO THE ENGINEER'S ATTENTION FOR RESOLUTION PRIOR TO CONSTRUCTION.

SPECIAL PETROLEUM LINE INSTRUCTIONS

- NO WORK MAY TAKE PLACE WITHIN THE SPLP RIGHT-OF-WAY UNTIL PLANS HAVE BEEN SUBMITTED, REVIEWED, ALL REQUIREMENTS LISTED WITHIN THE GENERAL CROSSING GUIDELINES HAVE BEEN SATISFIED AND WRITTEN PERMISSION TO PROCEED IS RECEIVED FROM SUNOCO PIPELINE.
- CONTRACTOR SHALL SUBMIT A LIST OF HEAVY EQUIPMENT TO BE USED IN THE VICINITY OF THE PIPELINE (INCLUDING EQUIPMENT TYPES/MODELS AND WEIGHTS) FOR THE SUNOCO PIPELINE CONSTRUCTION ENGINEER TO REVIEW.
- PRIOR TO CONSTRUCTION COMMENCEMENT THE CONTRACTOR SHALL CONTACT SUNOCO PIPELINE REPRESENTATIVE KEITH MATHIS, BASED IN THE HAYNESVILLE FIELD OFFICE, (903) 353-4178 TO MAKE ARRANGEMENTS FOR OBTAINING THE PIPELINE DEPTHS AND LOCATION(S).
- SPLP'S INSPECTOR WILL VERIFY THE DEPTH OF THE PIPELINE AT ANY PROPOSED UTILITY CROSSING, BOTH SIDES OF A PROPOSED ROAD CROSSING, LOCATIONS OF PROPOSED GRADE CUTS AND FILLS AND ANY OTHER CRITICAL LOCATION.
*PLEASE BE ADVISED, POTHOLES MAY BE REQUIRED AT THE CONTRACTOR'S EXPENSE.

UTILITY PROVIDERS	
COMMUNICATIONS	AT&T (888-620-6000) COMCAST (1-800-COMCAST)
ELECTRIC	AEP SOUTHWESTERN ELECTRIC POWER (SWEPCO)(888) 216-3523
GAS	CENTERPOINT ENERGY - ARKLA (888) 275-5252
PETROLEUM	SUNOCO PIPELINE L.P., CONSTRUCTION CONTACT: KEITH MATHIS, HAYNESVILLE, LA - (903) 353-4178. SUNOCO PIPELINE EMERGENCY CONTACT NO: 1-800-753-5531 (HOUSTON)
WATER & SEWERAGE DEPT.	CITY OF SHREVEPORT, 505 TRAVIS ST., SHREVEPORT, LA 71101, (318) 673-7600

EXECUTIVE DIRECTOR APPROVAL

3.1.2024
Date By *AA*

2024 ALL RIGHTS RESERVED BY ODOM ARCHITECTS, P.C. UNAUTHORIZED USE OR REPRODUCTION IS PROHIBITED WITHOUT WRITTEN CONSENT FROM ODOM ARCHITECTS, P.C.

McAlister's Deli | Shreveport
9637 Mansfield Road
Shreveport, Louisiana 71118

PROJECT	0684.0720
CONSTRUCTION DOCUMENTS	10.30.20
REVISED PER CITY COMMENTS	11.23.20
REVISED PER HEALTH DEPT. COMMENTS	12.04.20
REVISED PER PERMITTING REVIEW COMMENTS	2.11.21



EXECUTIVE DIRECTOR _____ DATE _____

FOR PERMITTING ONLY

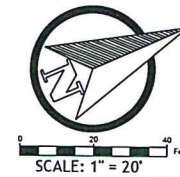
SITE UTILITIES PLAN

SCALE: 1" = 20'



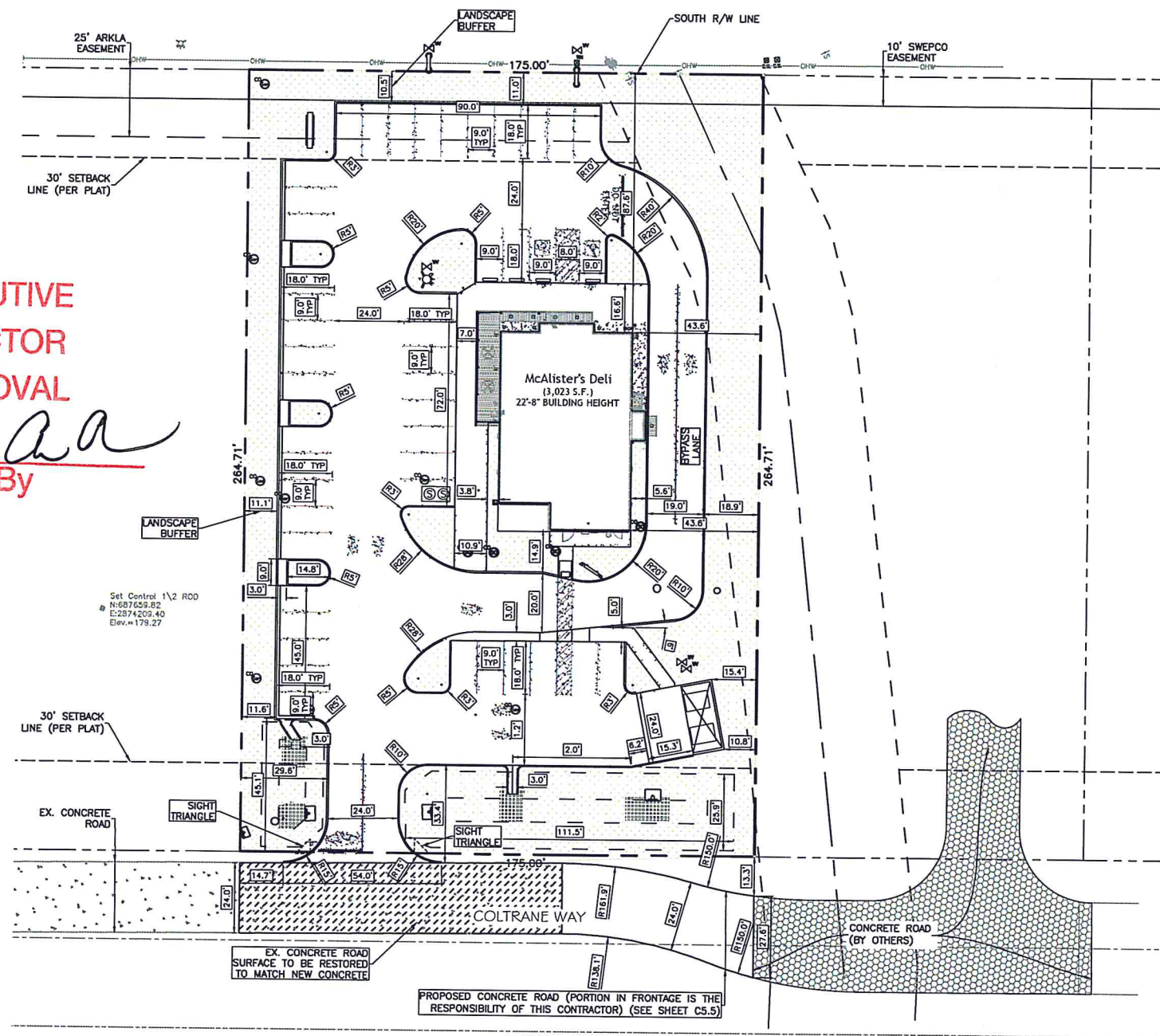
C4.0
SITE UTILITIES PLAN

MANSFIELD ROAD (US HWY 171)
200' RIGHT-OF-WAY



LEGEND:

---	PROPERTY LINE	⊕	FIRE HYDRANT
---	ADJACENT PROPERTY LINE	⊕	FIRE DEPT. CONNECTION
---	CENTERLINE	⊕	POST INDICATOR VALVE
---	EASEMENT	⊕	STORM DRAINAGE MANHOLE
---	FW - FIRE WATER LINE	⊕	DRAINAGE INLET
---	W - WATER LINE	⊕	STORM DRAIN CLEANOUT
---	SAN - SANITARY SEWER	⊕	SANITARY MANHOLE
---	UC - UNDERGROUND COMM.	⊕	SANITARY CLEANOUT
---	FO - FIBER OPTIC	⊕	SEWER VALVE
---	UP - UNDERGROUND POWER	⊕	BENCHMARK
---	OHW - OVERHEAD WIRES	⊕	HANDICAP PARKING SPACE
---	SD - STORM DRAIN	⊕	OUTFALL PROTECTION
---	EX. INDEX CONTOUR	⊕	CONCRETE SURFACE
---	EX. INTERMEDIATE CONTOUR	⊕	EX. CONCRETE ROAD SURFACE
---	EX. SPOT ELEVATION	⊕	EX. CONCRETE TO BE IMPROVED
---	INDEX CONTOUR	⊕	PROPOSED CONCRETE (BY OTHERS)
---	INTERMEDIATE CONTOUR	⊕	LANDSCAPE AREA
---	PROPOSED ELEVATION	⊕	
---	M.E. MATCH EXISTING		
---	DRAINAGE FLOW		
---	LIGHT POLE		
---	POWER POLE		
---	QUI AND/OR SIGN		
---	ELECTRICAL BOX		
---	FIBER OPTIC BOX		
---	GAS METER		
---	GAS VALVE		
---	WATER METER		
---	WATER VALVE		
---	BACKFLOW PREVENTER		



EXECUTIVE DIRECTOR APPROVAL
 Date 3-1-2021 By aa

- CONSTRUCTION NOTES:**
1. ALL DIMENSIONS ARE TO THE FACE OF CURB UNLESS OTHERWISE SPECIFIED.
 2. IN THE CASE OF DIMENSIONAL DISCREPANCY BETWEEN THE STRUCTURAL PLANS AND THE CIVIL DRAWINGS THE STRUCTURAL PLANS SUPERCEDE.
 3. ALL DRIVE LANES SHOWN HEREON SHALL ADHERE TO THE HEAVY DUTY CONCRETE SECTION (SEE DETAIL 4, C5.0) ALL PARKING AREAS MAY ADHERE TO THE LIGHT DUTY CONCRETE SECTION (SEE DETAIL 5, C5.0).
 4. THE PORTION OF COLTRANE WAY REQUIRED BY THIS CONTRACT SHALL ADHERE TO THE ROADWAY DETAILS (BY MOHR AND ASSOCIATES, INC.) SHOWN ON SHEET C5.5.

EXECUTIVE DIRECTOR _____ DATE _____
FOR PERMITTING ONLY

HORIZONTAL CONTROL PLAN
 SCALE: 1" = 20'



2020 ALL RIGHTS RESERVED BY ODOM ARCHITECTS, P.C. UNAUTHORIZED USE OR REPRODUCTION IS PROHIBITED WITHOUT WRITTEN CONSENT FROM ODOM ARCHITECTS, P.C.

PROJECT 0664.0720
 CONSTRUCTION DOCUMENTS 10.30.20
 REVISED PER PERMITTING REVIEW COMMENTS 2.11.21

STATE OF LOUISIANA
 STEPHANIE A. GROVES
 License No. 6075
 02/11/21
 PROFESSIONAL ENGINEER

Angela Marie
ODOM
 Architect
 4877 Pecan Ridge E. Mobile, AL 36619
 T: 251.607.0709 F: 251.607.0720
 odom@odomarchitects.com

SHEET: **C2.1**
 HORIZONTAL CONTROL PLAN