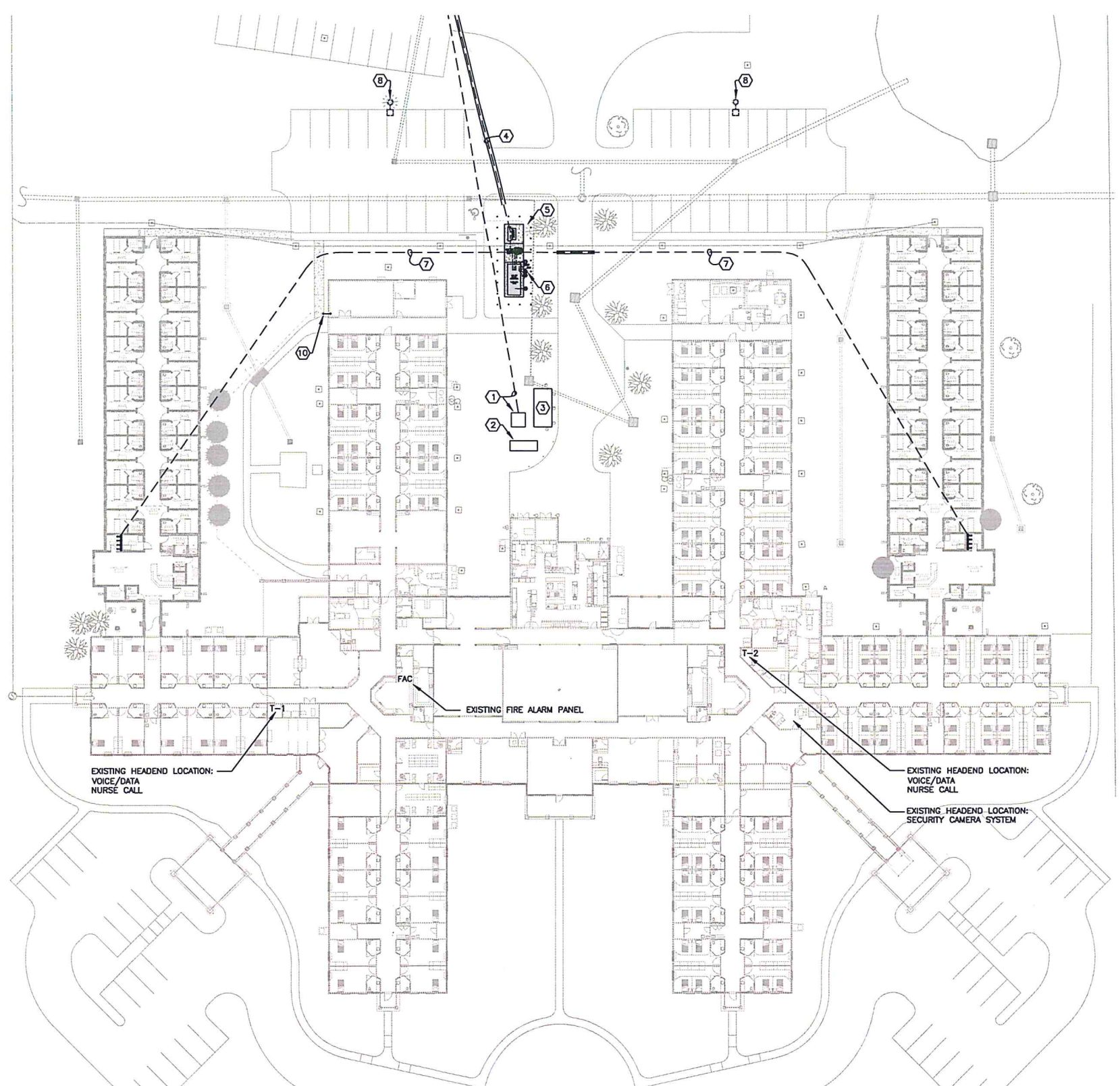
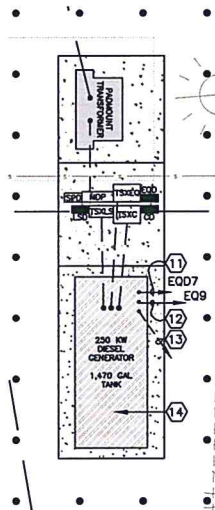


PE MASTERPLAN		DATE: Dec 22, 2020	DEVELOPMENT FOR: HERITAGE MANOR STRATMORE 530 STRATMORE DRIVE SHREVEPORT, LA 71115	REVISIONS: 12-22-20	Prep Man: B Kous DRAWN BY: T BORDEN
---------------	--	------------------------------	---	------------------------	--

**EXECUTIVE
DIRECTOR
APPROVAL**

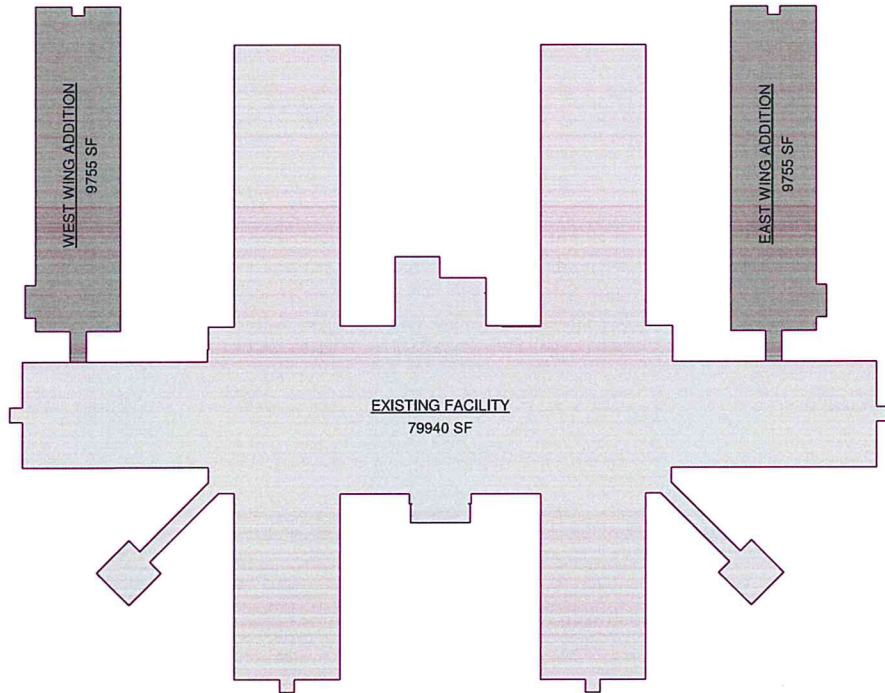
2-1-2021 AC
Date By



- (5) ELECTRICAL SE ON THIS SHEE 120/208V, 3P RATED SERVICE WING ADDITION; AND ARRANGE PROVIDE PERM SERVICE ENTRA OF EACH SERV
- (6) NEW DIESEL G FUEL TANK. RE ON SHEET E10 SHEET. MAINTA
- (7) NEW UNDERGR BUILDING WING ELECTRICAL RIE
- (8) EXISTING POLE
- (9) NEW UTILITY F BY OWNER.
- (10) INSTALL ACCES FOLLOWS: ONE AND MAGNETO EXTEND 1" C FI NEARBY WING FACILITY COMM STATION WHEN UPON ACTIVATN
- (11) CONNECT TO C 1#12 GRND IN
- (12) CONNECT TO C 1#10 GRND IN
- (13) 2#10 & 1#10 CIRCUIT TO TR REQUIRED IN ANNUNCIATOR
- (14) CONTRACTOR S STORAGE TANK REVIEW, PROVI AND INSTALL F REQUIRED.

GENERA

1. CONTRACTOR SI DEVICES TO BE CONDUIT, TO BE FOLLOWS:
 - A. (10) DUPL
 - B. (5) VOICE/
 - C. (5) EMPTY ABOVE CEI
 - D. (3) FIRE A
 - E. (3) FIRE A
 - F. (3) FIRE A
2. ALL NEW WIRING RECEPTACLES, I WITH AN EFFEC INSTALLATION IN OF CABLE ASSE (CABLE) HAVING EQUIPMENT GRO
3. RECEPTACLES S
4. ALL FIRE ALARM COLOR.
5. CONFIRM MOUNT RECEPTACLES W ROUGH-IN, AND MOUNTING BRAC
6. ELECTRICAL COY WITH PULL STRI MECHANICAL CC
7. COORDINATE W' WING ELECTRICA SLAB FOR FUTU
8. PROVIDE FOUR WING ELECTRICA SLAB FOR FUTU
9. CONTRACTOR SI AND RECEPTAC



EXECUTIVE
DIRECTOR
APPROVAL

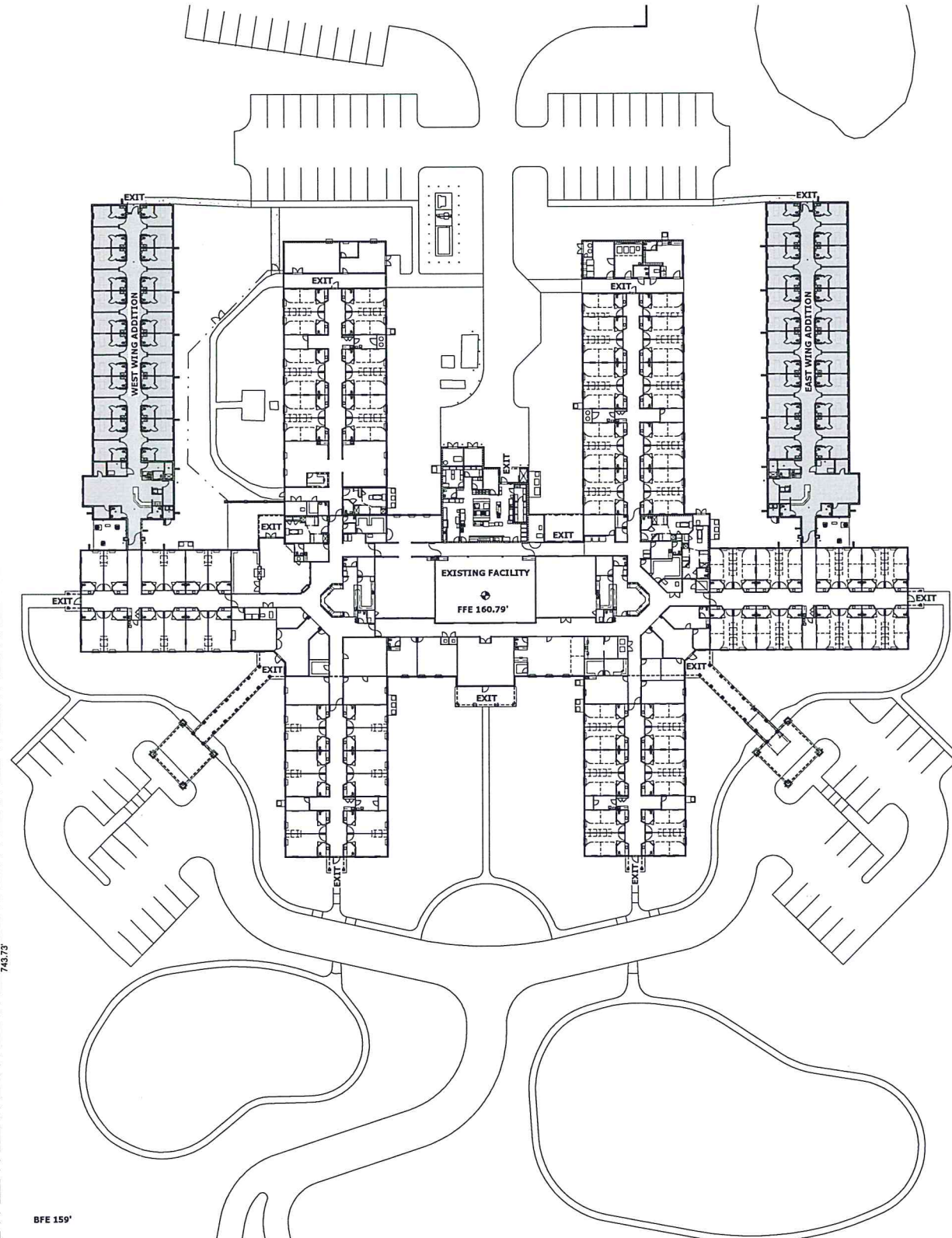
2-1-2021
Date

AA
By

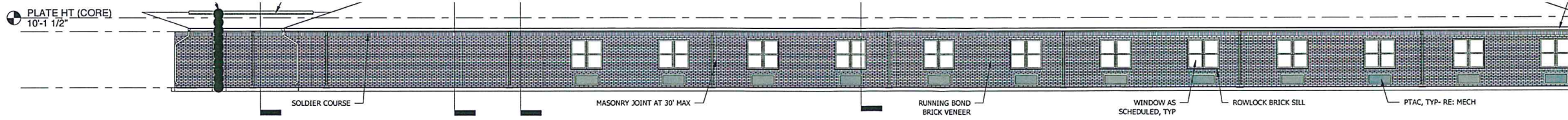
200.00'

743.73'

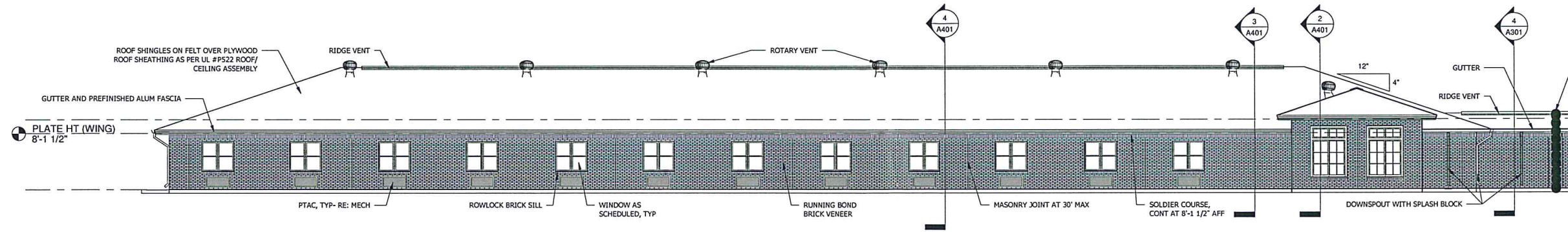
BFE 159'



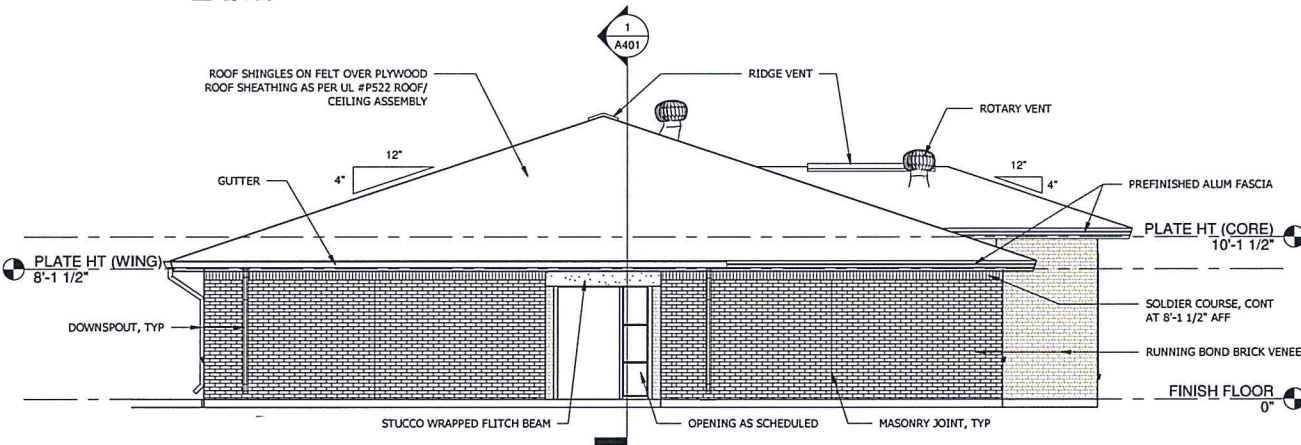
I:\10000 - Magnolia Management-Beebe and Cambury\2008 - Heritage Manor of Stratmore Addition\DWG\9.0 WRK\G Heritage Manor of Stratmore Add-WRK\G DWG.rvt



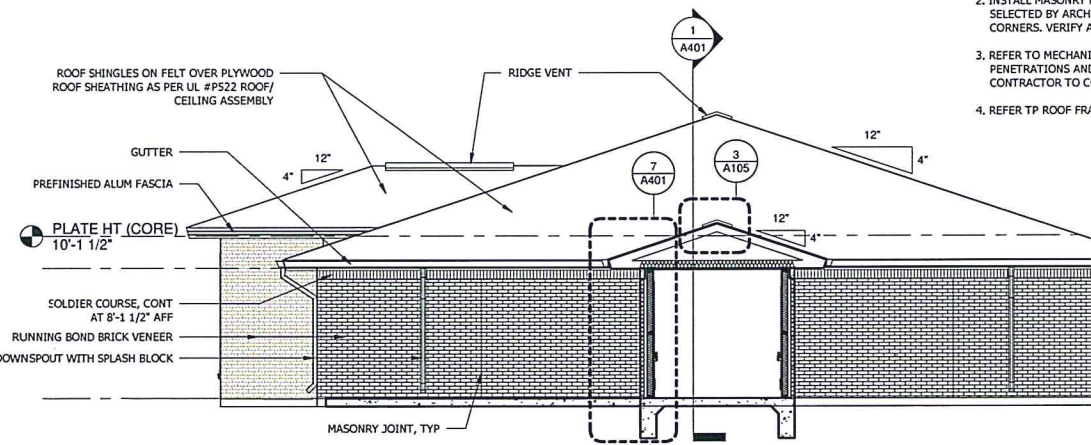
1 EXTERIOR ELEVATION
1/8" = 1'-0"



2 EXTERIOR ELEVATION
1/8" = 1'-0"



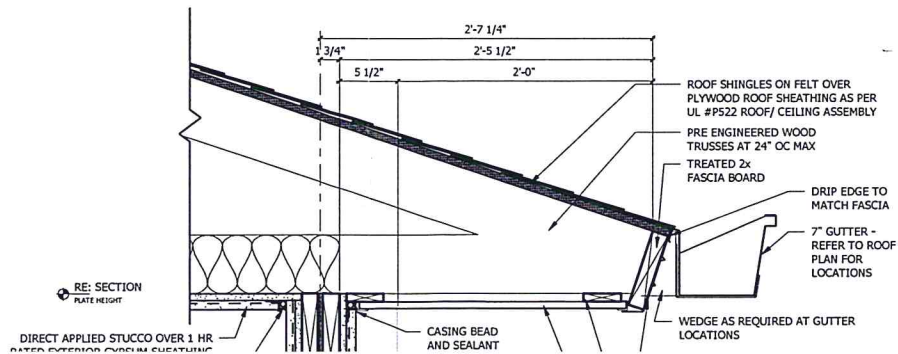
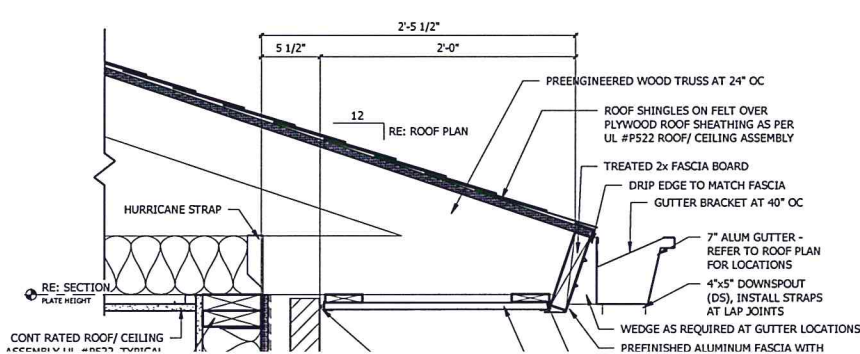
3 EXTERIOR ELEVATION
3/16" = 1'-0"



4 EXTERIOR ELEVATION
3/16" = 1'-0"

GENERAL NOTES

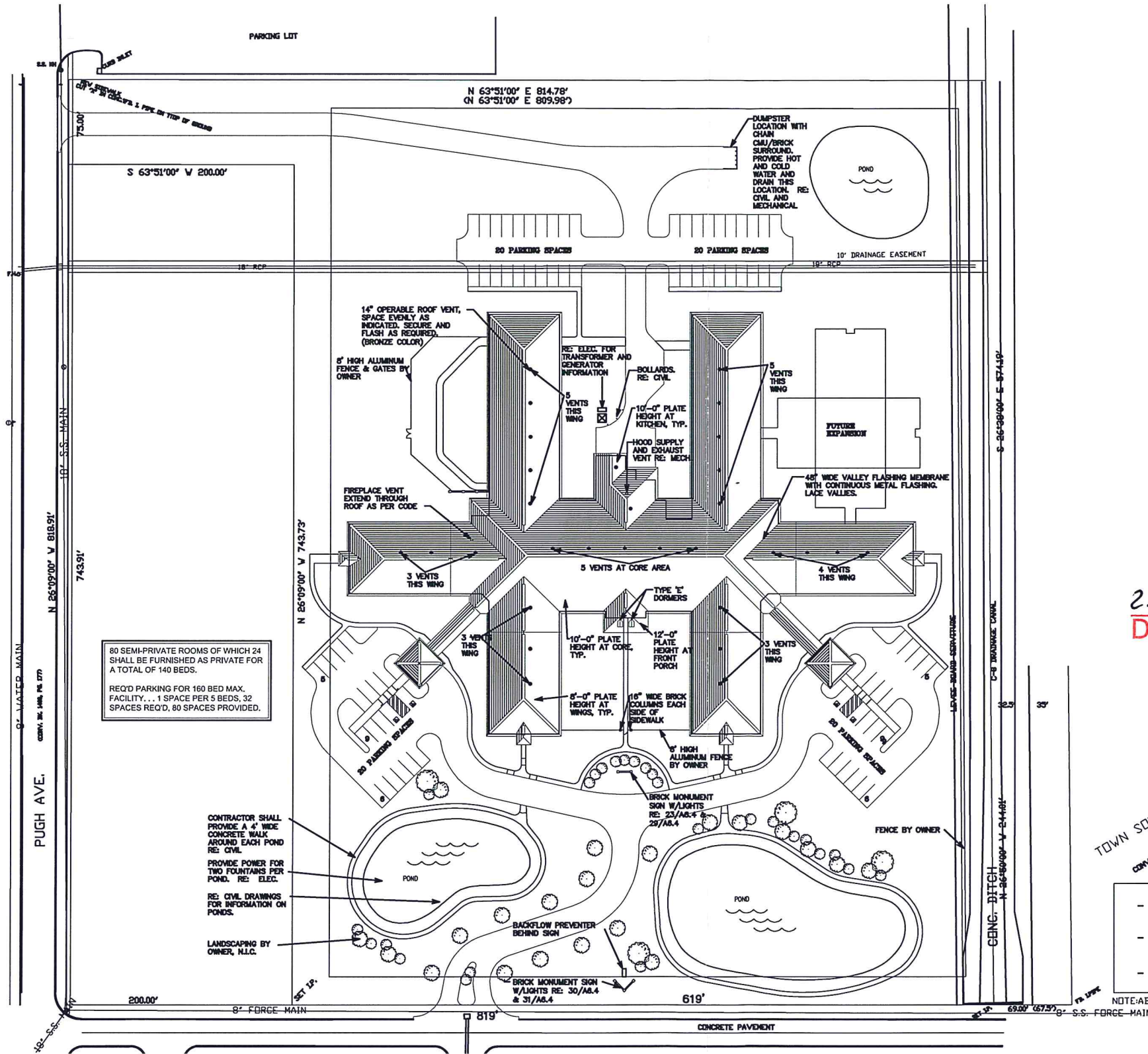
1. REFER TO SECTION:
2. INSTALL MASONRY I SELECTED BY ARCH CORNERS. VERIFY #
3. REFER TO MECHANICAL PENETRATIONS AND CONTRACTOR TO C
4. REFER TP ROOF FR



EXECUTIVE
DIRECTOR
APPROVAL

2-1-2021
Date By

LA STATE HIGHWAY NO. 1



80 SEMI-PRIVATE ROOMS OF WHICH 24 SHALL BE FURNISHED AS PRIVATE FOR A TOTAL OF 140 BEDS.
 REQ'D PARKING FOR 160 BED MAX. FACILITY, . . . 1 SPACE PER 5 BEDS, 32 SPACES REQ'D, 80 SPACES PROVIDED.

CONTRACTOR SHALL PROVIDE A 4" WIDE CONCRETE WALK AROUND EACH POND RE: CIVIL
 PROVIDE POWER FOR TWO FOUNTAINS PER POND. RE: ELEC.
 RE: CIVIL DRAWINGS FOR INFORMATION ON PONDS.
 LANDSCAPING BY OWNER, H.I.C.

- 80 SEMI-PRIVATE ROOM OF WHICH 24 ARE TO BE FURNISHED AS PRIVATE FOR A TOTAL OF 140 PATIENTS.
 - REQUIRED PARKING: 1 SPACE PER 5 BEDS
 160 BEDS MAX. FACILITY: 32 SPACES REQUIRED
 80 SPACES PROVIDED
 - 72,832 SQUARE FEET TOTAL (not including porches and drop-offs)

EXECUTIVE
 DIRECTOR
 APPROVAL

2-1-2021 Date By *aa*

TOWN SOUTH ESTATES? 13 FILLING
 CONV. BK. 1600, PG. 221 - 222

NOTE: ABANDONED 4" S.S. FORCE LEFT IN PLACE NORTH