

**ZONING:**  
 C-3 (GENERAL COMMERCIAL)

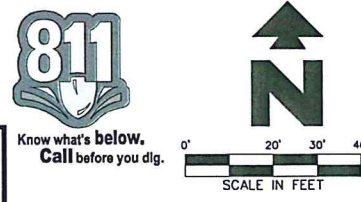
**BUILDING SETBACKS:**  
 AS SHOWN ON SITE PLAN

CONTRACTOR SHALL BE RESPONSIBLE FOR AND HIRE A LOUISIANA REGISTERED LAND SURVEYOR TO ESTABLISH PROPERTY CORNERS, BUILDING CORNERS, CANOPY, ETC. AS REQUIRED FOR CONSTRUCTION LAYOUT.

CONTRACTOR IS TO ENSURE THAT THE CONSTRUCTION FENCE ENCOMPASSES THE ENTIRE WORK AREA. (RE: DETAIL 2F)

CONTRACTOR TO ENSURE THE LIGHT POLES AND SIGNS ARE AT LEAST 2' FROM THE BACK OF THE CURB TO PREVENT THE VEHICLES STRIKING THE LIGHT POLE OR SIGN.

THESE DRAWINGS DO NOT INCLUDE COMPONENTS FOR CONSTRUCTION SAFETY.  
 THE LOCATION OF EXISTING UNDERGROUND UTILITIES ARE SHOWN IN AN APPROXIMATE WAY ONLY. THE CONTRACTOR SHALL DETERMINE THE EXACT LOCATION OF ALL EXISTING UTILITIES BEFORE COMMENCING WORK. HE AGREES TO BE FULLY RESPONSIBLE FOR ANY AND ALL DAMAGES WHICH MIGHT BE OCCASIONED BY HIS FAILURE TO EXACTLY LOCATE AND PRESERVE ANY AND ALL UNDERGROUND UTILITIES.



EXISTING		PROPOSED	
— S —	SANITARY SEWER LINE	— B —	BOUNDARY LINE
— W —	WATER LINE	— C —	CONCRETE CURB AND GUTTER
— G —	NATURAL GAS LINE	— BCP —	BUILDING CONTROL POINT
— U —	UNDERGROUND ELECTRIC LINE		
— UT —	UNDERGROUND TELEPHONE LINE		
— FO —	FIBER OPTIC CABLE		
— CL —	CONTOUR LINE W/ELEVATION LABEL		
○	SEWER MANHOLE		
○	SEWER CLEANOUT		
○	WATER METER		
○	WATER VALVE		
○	FIRE HYDRANT		
○	LIGHT POLE		
○	DRAINAGE MANHOLE		

- GENERAL SITE NOTES**
- ALL DIMENSIONS SHOWN ARE TO THE FACE OF CURB UNLESS OTHERWISE NOTED.
  - ALL CURB RETURN RADII SHALL BE 3', AS SHOWN TYPICAL ON THIS PLAN, UNLESS OTHERWISE NOTED.
  - UNLESS OTHERWISE SHOWN, CALLED OUT OR SPECIFIED HEREON: ALL CURB AND GUTTER ADJACENT TO PAVING SHALL BE INSTALLED PER DETAIL. PAVEMENT SHALL BE INSTALLED IN ACCORDANCE WITH THE PAVING PLAN OVER THE ENTIRE PARKING LOT AREA AND ALL APPROACH DRIVES. SEE ASSOCIATED PLANS FOR CANOPY, COLUMN, DISPENSER ISLAND DETAILS AND LAYOUT.
  - CONTRACTOR SHALL BEGIN CONSTRUCTION OF ANY LIGHT POLE BASES FOR RELOCATED LIGHT FIXTURES AND RELOCATION OF ELECTRICAL SYSTEM AS SOON AS DEMOLITION BEGINS. CONTRACTOR SHALL BE AWARE THAT INTERRUPTION OF POWER TO ANY LIGHT POLES OR SIGNS SHALL NOT EXCEED 24 HOURS.
  - ALL SLOPES AND AREAS DISTURBED BY CONSTRUCTION SHALL BE GRADED SMOOTH AND FOUR INCHES OF TOPSOIL APPLIED. IF ADEQUATE TOPSOIL IS NOT AVAILABLE ON SITE, THE CONTRACTOR SHALL PROVIDE TOPSOIL, APPROVED BY THE OWNER, AS NEEDED. THE AREA SHALL THEN BE SEEDED/SOODED, FERTILIZED, MULCHED, WATERED AND MAINTAINED UNTIL HARDY GRASS GROWTH IS ESTABLISHED IN ALL AREAS. ANY AREAS DISTURBED FOR ANY REASON PRIOR TO FINAL ACCEPTANCE OF THE PROJECT SHALL BE CORRECTED BY THE CONTRACTOR AT NO ADDITIONAL COST TO THE OWNER.
  - CONTRACTOR SHALL PURCHASE AND INSTALL A MAILBOX AND SHALL COORDINATE LOCATION OF MAILBOX WITH MURPHY CONSTRUCTION MANAGER AND/OR ON-SITE REPRESENTATIVE AND LOCAL POSTMASTER.
  - ALL PROPOSED PAVEMENT STRIPING OR MARKINGS SHALL FOLLOW THE SPECIFICATIONS FOR PAINT INCLUDED IN DETAIL 10A.

- SITE NOTES**
- 88 OVER HEAD CANOPY (TYP. PER CANOPY PLANS)
  - 12A 4" TRAFFIC YELLOW LANE STRIPE (SEE LENGTH INDICATED AT SYMBOL)
  - 12D 4" WIDE PAINTED STRIPES: 2" O.C. @ 45' (SEE SIZE INDICATED AT SYMBOL)
  - 14J GC TO INSTALL (1) 4" PVC SLEEVE FOR IRRIGATION LINE. (SEE UTILITY PLAN FOR INSTALLATION REQUIREMENTS)
  - 14K GC TO INSTALL (2) 4" PVC SLEEVES FOR FUTURE USE (SEE UTILITY PLAN FOR INSTALLATION REQUIREMENTS)
  - 16A MURPHY PYLON SIGN PER APPROVED ELEVATIONS.
  - 21B TRANSITION CURB IN LAST 4' FROM 6" TO 1" HIGH
  - 21E UNDERGROUND STORAGE TANKS (1-25,000 GAL. & 1-26,000 GAL.)
  - 21K MURPHY USA ID SIGN PER APPROVED RENDERING
  - 21L PRICE SIGN PER APPROVE ELEVATION
  - 51B LIMITS OF SAWCUT AND PAVEMENT REMOVAL

- SITE DETAILS**
- 1A INTEGRAL CONCRETE CURB
  - 1B CONCRETE CURB
  - 2E DUMPSTER ENCLOSURE WITH COMPOSITE GATES
  - 3D CONCRETE SIDEWALK
  - 3K CONCRETE SIDEWALK AROUND BUILDING
  - 3S SIDEWALK RAMP TOOLED SURFACE
  - 5F STEEL BOLLARD W/COVER (SINGLE)
  - 5B TRAFFIC SIGN IN BOLLARD
  - 9U ACCESSIBLE PARKING SYMBOL (SEE PAINT COLOR INDICATED AT SYMBOL)
  - 9V ACCESSIBLE / VAN ACCESSIBLE PARKING SIGN MOUNTED IN BOLLARD
  - 9X "NO PARKING" PAINTED ON PAVEMENT
  - 10A TRAFFIC FLOW ARROW (TYP.)
  - 10B "STOP" BAR
  - 12G "STOP" SIGN
  - 13A SITE LIGHT POLE (SEE PHOTOMETRIC PLANS FOR POLE BASE DETAIL, FIXTURE TYPE AND MOUNTING DETAILS)
  - 18G CONSTRUCTION CAMERA (COORDINATE WITH MOUSA PM FOR LOCATION)
  - 21G AIR VACUUM UNIT WITH 4'x7' CONCRETE SLAB
  - 21H ATM PAD
  - 21I PROPANE TANKS
  - 21J MAILBOX (CONTRACTOR SHALL COORDINATE LOCATION WITH MURPHY AND POSTMASTER PRIOR TO INSTALLATION)
  - 21U 5'x7' ICE UNIT (SEE NUMBER INDICATED AT SYMBOL)

**PRE-CONSTRUCTION IMPERVIOUS SITE RATIO (ISR)**

AREA	SQUARE FEET	%
IMPERVIOUS (ROOF AND PAVING)	32,105	50
GREENSPACE	32,544	50
GROSS SITE	64,649	100

**FEMA DATA:**

- FLOOD ZONE: AE
- PANEL NO.: 22017C0458H
- DATE: REVISED MAY 19, 2014
- BASE FLOOD ELEVATION: 191.00'
- FLOOD HAZARD BOUNDARIES EXTEND OUTSIDE OF CURRENT SITE PLAN

**POST-CONSTRUCTION IMPERVIOUS SITE RATIO (ISR)**

AREA	SQUARE FEET	%
IMPERVIOUS (ROOF AND PAVING)	34,931	54
GREENSPACE	29,718	46
GROSS SITE	64,649	100

**PARKING INFORMATION:**

DESCRIPTION	BUILDING AREA (S.F.)	REQUIRED RATIO	SPACES			
			REGULAR	UNDER CANOPY	ACCESSIBLE	TOTAL
FUELING STATION	2,824	1/250 S.F.	11		1	12
		PROVIDED:				
		1/104 S.F.	14	12	1	27

NO. OF FUEL ISLANDS: 8  
 NO. OF VEHICLE FUELING POINTS: 12

**EXECUTIVE DIRECTOR APPROVAL**

Date 8-21 By ChCl

**SHEET NO. C-3**

**STATE OF LOUISIANA**  
 Thomas C. Devell, Jr.  
 REG. NO. 18878  
 REGISTERED PROFESSIONAL ENGINEER IN CIVIL ENGINEERING  
 8/21/24  
 Amos C. Devell, Jr.

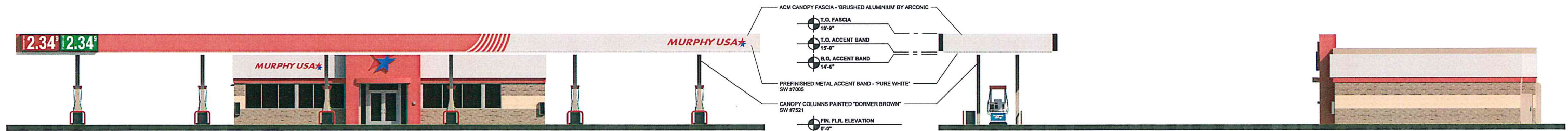
**DATE** 8/21/24  
**REV** 1  
**SCALE** 1"=20'

**PROJECT:** MURPHY OIL USA (NTI) #6629  
 WEST 70th STREET  
 SHREVEPORT, LOUISIANA

**DESIGNER:** PAN AMERICAN ENGINEERS, LLC  
 1717 JACKSON STREET  
 ALEXANDRIA, LA 71301  
 (504) 473-3100  
 CONTACT: SAM GABBOTT

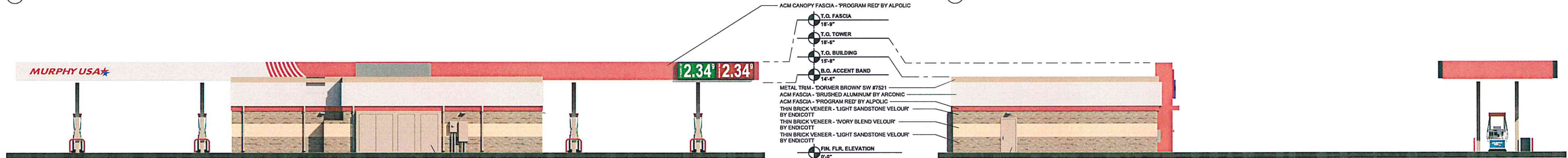
**CLIENT:** MURPHY OIL USA, INC.  
 200 PEACH STREET  
 EL DORADO, AR 71730

**MURPHY OIL USA**



1 ELEVATION - FRONT (FACING NORTH)

2 ELEVATION - RIGHT (FACING WEST)



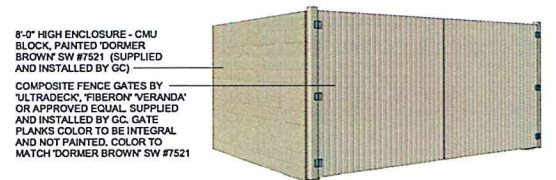
3 ELEVATION - REAR (FACING SOUTH)

4 ELEVATION - LEFT (FACING EAST)



5 ELEVATION - FRONT BUILDING ONLY (FACING NORTH)

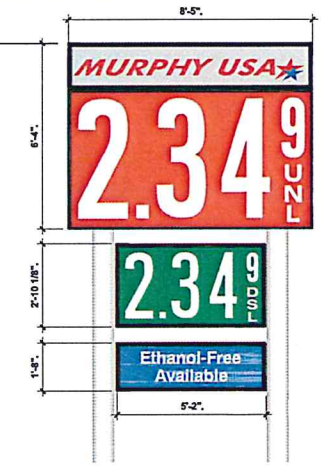
EXECUTIVE  
DIRECTOR  
APPROVAL  
  
10.24.24  
Date By *DeCe*



6 TRASH ENCLOSURE

**SIGNAGE COLOR CHART**

BUILDING - ROUTED SIGNS FURNISHED AND INSTALLED BY FMS		
MURPHY USA	BLUE	EASTMAN BLUE, PANTONE 287 BLUE 3M 3630-87 ROYAL BLUE
	RED	PROGRAM RED, PANTONE 485 RED 3M 3630-43 RED
	WHITE	EASTMAN WHITE
BUILDING - CHANNEL LETTER SIGNS FURNISHED AND INSTALLED BY THE SIGN VENDOR		
STAR LOGO	BLUE	ORACAL 8500 - 005 MIDDLE BLUE
	RED	ORACAL 8500 - 031 RED
	RETURNS	WHITE
	TRIMCAP	WHITE JEWELITE
CANOPY - ROUTED SIGNS FURNISHED AND INSTALLED BY FMS		
MURPHY USA	BLUE	EASTMAN BLUE, PANTONE 287 BLUE 3M 3630-87 ROYAL BLUE
	RED	PROGRAM RED, PANTONE 485 RED 3M 3630-43 RED
	WHITE	EASTMAN WHITE
STAR LOGO	BLUE	EASTMAN BLUE, PANTONE 287 BLUE 3M 3630-87 ROYAL BLUE
	RED	PROGRAM RED, PANTONE 485 RED 3M 3630-43 RED
	WHITE	EASTMAN WHITE
CANOPY - PRICE SIGNS FURNISHED AND INSTALLED BY THE SIGN VENDOR		
UNLEADED	RED	3M 3632-73
	WHITE	3M 3632-20
	DIGIT	RED/WHITE
DIESEL	GREEN	3M 3632-26
	WHITE	3M 3632-20
	DIGIT	GREEN/WHITE
ETHANOL FREE	BLUE	3M 3632-157
	SILVER	3M 3630-121
	CABINET	BLACK
UNLEADED	RED	3M 3632-73
	WHITE	3M 3632-20
	DIGIT	RED/WHITE
DIESEL	GREEN	3M 3632-26
	WHITE	3M 3632-20
	DIGIT	GREEN/WHITE
ETHANOL FREE	BLUE	3M 3632-157
	WHITE	3M 3632-20
	DIGIT	BLUE/WHITE
	CABINET	BLACK

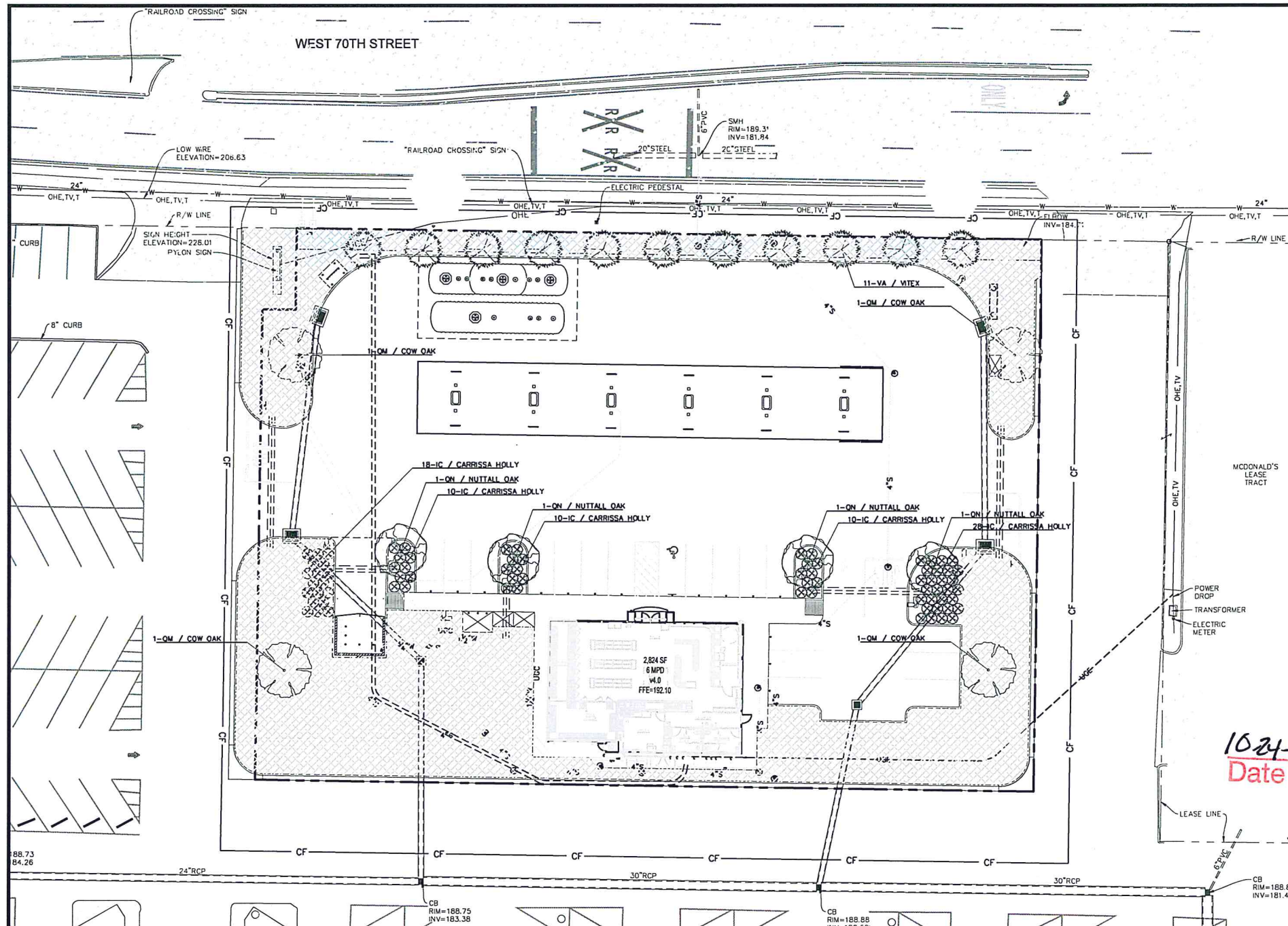


7 PYLON SIGN 1

BUILDING & CANOPY SIGNS:	QTY.	HEIGHT	WIDTH	AREA S.F.	TOTAL S.F.
MURPHY USA BLDG. LOGO SIGN	1	GRAPHIC AREA		34.90	34.90
MURPHY USA CHANNEL 'STAR' SIGN	1	GRAPHIC AREA		24.76	24.76
MURPHY USA CANOPY LOGO SIGN	2	GRAPHIC AREA		33.54	67.08
MEDIUM COMBO CANOPY PRICE SIGN	2	43.12"	193.50"	57.95	115.90
<b>BUILDING &amp; CANOPY SIGNS TOTAL SIGNAGE : 242.64 S.F.</b>					
PYLON SIGN:	QTY.	HEIGHT	WIDTH	AREA S.F.	TOTAL S.F.
UNLEADED W/LOGO	1	76"	101"	53.30	53.30
DIESEL	1	34.12"	62"	14.68	14.68
ETHANOL FREE AVAILABLE	1	20"	62"	8.63	8.63
<b>PYLON SIGNS TOTAL SIGNAGE : 76.61 S.F.</b>					
<b>TOTAL SIGN AREA : 319.25 S.F.</b>					

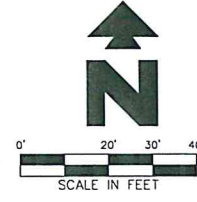


SHREVEPORT, LA (WEST 70<sup>TH</sup> STREET)  
MURPHY #6629



THESE DRAWINGS DO NOT INCLUDE COMPONENTS FOR CONSTRUCTION SAFETY.

THE LOCATION OF EXISTING UNDERGROUND UTILITIES ARE SHOWN IN AN APPROXIMATE WAY ONLY. THE CONTRACTOR SHALL DETERMINE THE EXACT LOCATION OF ALL EXISTING UTILITIES BEFORE COMMENCING WORK. HE AGREES TO BE FULLY RESPONSIBLE FOR ANY AND ALL DAMAGES WHICH MIGHT BE OCCASIONED BY HIS FAILURE TO EXACTLY LOCATE AND PRESERVE ANY AND ALL UNDERGROUND UTILITIES.



**EXISTING**

— S —	SANITARY SEWER LINE	○	SEWER MANHOLE
— W —	WATER LINE	○	SEWER CLEANOUT
— G —	NATURAL GAS LINE	○	WATER METER
— U —	UNDERGROUND ELECTRIC LINE	○	WATER VALVE
— UG —	UNDERGROUND TELEPHONE LINE	○	FIRE HYDRANT
— FO —	FIBER OPTIC CABLE	○	LIGHT POLE
— 12 —	CONTOUR LINE W/ELEVATION LABEL	○	DRAINAGE MANHOLE

**PROPOSED**

---	BOUNDARY LINE
○	TYPICAL PLANTING WITH QUANTITY AND KEY (SEE PLANT LIST)
---	CONSTRUCTION FENCE

**GENERAL LANDSCAPE NOTES**

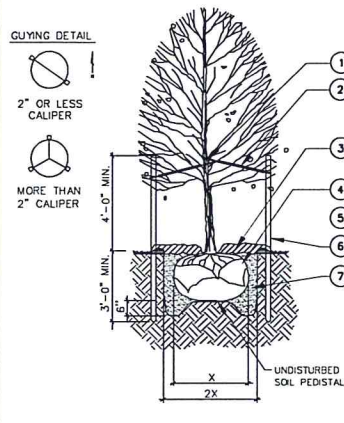
- LOCATE ALL UTILITIES AND SITE LIGHTING CONDUITS BEFORE LANDSCAPE CONSTRUCTION BEGINS.
- NOTIFY LANDSCAPE ARCHITECT OR DESIGNATED REPRESENTATIVE OF ANY LAYOUT DISCREPANCIES PRIOR TO ANY PLANTING.
- ALL LANDSCAPE MATERIALS SHALL BE IN COMPLIANCE WITH THE AMERICAN STANDARD FOR NURSERY STOCK. (ANSI-260.1-1986)
- ALL DISTURBED AREAS DESIGNATED ON THE GRADING PLAN SHALL BE SHOWN AS FOLLOWS:  
 GRASS SEED MIX: 40% PERENNIAL RYE  
 40% TURF TYP. FESCUE 0.5 LB PER 100 S.F.  
 20% BERMUDA GRASS  
 FERTILIZER 10-10-10 2 LB PER 1000 S.F.  
 AGRICULTURAL LIME 2 LB PER 1000 S.F.  
 MULCH: DRY STRAW OR HAY 2"-3" DEPTH
- ALL SLOPES AND AREAS DISTURBED BY CONSTRUCTION SHALL BE GRADED SMOOTH AND FOUR INCHES OF TOPSOIL APPLIED. IF ADEQUATE TOPSOIL IS NOT AVAILABLE ON SITE, THE CONTRACTOR SHALL PROVIDE TOPSOIL APPROVED BY THE OWNER, AS NEEDED. THE AREA SHALL THEN BE SODED, FERTILIZED, MULCHED, WATERED AND MAINTAINED UNTIL HARDY GRASS GROWTH IS ESTABLISHED IN ALL AREAS. ANY RELOCATED TREES SHALL BE MAINTAINED UNTIL SUCH POINT AS TREE IS RE-ESTABLISHED. ANY AREAS DISTURBED SHALL ANY REASON PRIOR TO THE FINAL ACCEPTANCE OF THE PROJECT SHALL BE CORRECTED BY THE CONTRACTOR AT NO ADDITIONAL COST TO THE OWNER.
- THE MURPHY STATION WILL NOT DROP MASTER DEVELOPMENT GREEN SPACE BELOW CITY REQUIREMENTS.
- CONTRACTOR IS TO VERIFY LOCATION OF MASTER DEVELOPMENT IRRIGATION SYSTEM, VALVE BOXES, CONTROL BOXES, BACKFLOW PREVENTION DEVICES AND OTHER ITEMS WHICH ARE PART OF THE SYSTEM. IF DAMAGED THEY MUST BE REPAIRED AT CONTRACTOR'S COST.
- CONTRACTOR IS TO PROTECT EXISTING LANDSCAPING/IRRIGATION MATERIALS.
- ACCEPTANCE OF GRADING AND SEEDING SHALL BE BY LANDSCAPE ARCHITECT AND/OR OWNER. THE CONTRACTOR SHALL ASSUME MAINTENANCE RESPONSIBILITIES FOR A MINIMUM OF ONE (1) YEAR OR UNTIL SECOND CUTTING, WHICHEVER IS LONGER. MAINTENANCE SHALL INCLUDE WATERING, WEEDING, RESEEDING AND OTHER OPERATIONS NECESSARY TO KEEP ALL LAWN AREAS IN A THRIVING CONDITIONS. UPON FINAL ACCEPTANCE, OWNER SHALL ASSUME ALL MAINTENANCE RESPONSIBILITIES. AFTER LAWN AREA HAVE GERMINATED, AREAS WHICH FAIL TO SHOW A UNIFORM STAND OF GRASS FOR ANY REASON WHATSOEVER SHALL BE RE-SEEDING REPEATEDLY UNTIL ALL AREAS ARE COVERED WITH A SATISFACTORY STAND OF GRASS. MINIMUM ACCEPTANCE OF SEEDED LAWN AREAS MAY INCLUDE SCATTERED BARE SPOTS, NONE OF WHICH ARE LARGER THAN 1 SQUARE FOOT, AND WHEN COMBINED DO NOT EXCEED 2% OF TOTAL GREEN AREA.
- ALL PERMANENT TURF AREAS SHALL BE SOD.
- FERTILIZE ALL PLANTS AT THE TIME OF PLANTING WITH TIME RELEASE FERTILIZER.
- SEE GRADING PLAN FOR APPLICATION OF TOPSOIL AND MAINTENANCE OF GREEN AREAS.
- SHREDDED HARDWOOD MULCH SHALL BE USED AS A FOUR INCH (4") TOP DRESSING IN ALL PLANT BEDS AND AROUND ALL TREES. SINGLE TREES OR SHRUBS SHALL BE MULCHED TO THE OUTSIDE EDGE OF THE SAUCER OR LANDSCAPE ISLAND (SEE PLANTING DETAILS).
- PLANT MATERIAL SHALL BE WARRANTED FOR A PERIOD OF 1 YEAR AFTER PLANTING. IF ANY PLANTS DIE BEFORE THE END OF 1 YEAR THEY SHALL BE REPLACED, AT NO COST TO THE OWNER, BY A PLANT OF SIMILAR SIZE AND SPECIES.
- TREES SHALL BE PLANTED PER DETAIL 50A.
- GC SHALL INCORPORATE PRE-EMERGENT HERBICIDE AND WEED BARRIER FABRIC IN MULCH AND PLANTING AREAS.
- NO PLANTINGS SHALL BLOCK VIEW OF FREE-STANDING OR ID SIGNAGE.

**EXECUTIVE DIRECTOR APPROVAL**

10-24-24  
 Date By *AC*

**DECIDUOUS TREE PLANTING LEGEND**

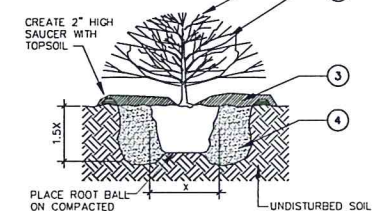
- SYMBOL DESCRIPTION**
- TREE STRAP LOOP AT FIRST BRANCH. USE RUBBER HOSE OR APPROVED EQUAL TO PREVENT DAMAGE TO TREE.
  - 12 GAUGE GALVANIZED WIRE & 1 1/2" PVC PIPE
  - 4" ORGANIC MULCH PER SPECIFICATIONS. DO NOT PLACE MULCH AGAINST TREE TRUNK.
  - REMOVE WIRE BASKET AND REMOVE BURLAP & ROPE FROM TOP 1/3 OF ROOT BALL.
  - TREE SAUCER (FORMED BY MIN. 4" THICK MULCH).
  - 8" METAL TEE STAKE. KEEP STAKE PLUMB AND SECURE OUTSIDE OF TREE PIT.
  - PREPARED BACKFILL - TAMP TO PREVENT SETTLEMENT. SOAK BACK FILL AFTER PLANTING.
- PLANTING NOTES**
- RETAIN NATURAL SHAPE. DO NOT SHEAR OR CUT CENTRAL LEADER. TREES WITH CENTRAL LEADERS ARE NOT ACCEPTED IF LEADER IS DAMAGED OR REMOVED.
  - PRUNE ALL DAMAGED TWIGS AFTER PLANTING.
  - WRAP TREES TO FIRST BRANCH IF PLANTED IN FALL. DO NOT WRAP IF PLANTED IN SPRING.
  - TREES TO BE INSTALLED SO TOP OF ROOT BALLS LEVEL WITH ADJACENT GRADE. TREE SHALL BEAR SAME RELATION TO FINISH GRADE AS MAINTAINED AT NURSERY.
  - PLACE TREE BALL ON FIRM UNDISTURBED SOIL.
  - IF POSSIBLE MARK TREE TRUNK ON THE NORTHERN SIDE AT THE NURSERY AND PLANT TREE WITH MARK FACING NORTH.
  - TOPSOIL USED SHALL BE AS SPECIFIED IN THE LANDSCAPE SPECIFICATIONS.



**TREE PLANTING DETAIL** 50A

**SHRUB PLANTING LEGEND**

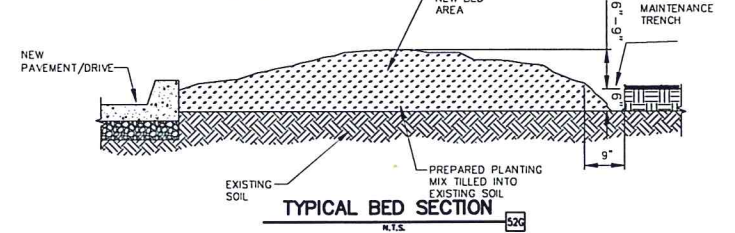
- SYMBOL DESCRIPTION**
- PRUNE BROKEN AND DAMAGE TWIGS AFTER PLANTING. DO NOT PRUNE OR DAMAGE CENTRAL LEADER.
  - PLACE PLANT IN VERTICAL, PLUMB POSITION. REMOVE CONTAINER AND PLANT LABEL PRIOR TO PLACING BACKFILL.
  - 3"-4" OF MULCH AS SPECIFIED. DO NOT PLACE MULCH DIRECTLY AGAINST STEMS.
  - PREPARED BACKFILL AND FERTILIZE PER SPECIFICATION. TAMP AND SOAK BACKFILL AFTER PLANTING. MAINTAIN AFTER PLANTING PER SPECIFICATIONS.
- PLANTING NOTES**
- HOLE DIAMETER SHOULD BE AT LEAST TWICE THE DIAMETER OF THE SHRUB ROOT BALL. SHRUB CROWN SHOULD BE PLACED SLIGHTLY HIGHER (1"-2") ABOVE THE SURROUND FINISHED GRADE.
  - SCORE ROOTBALL BY CUTTING 1/2"-1" VERTICAL GROVES 3" APART.
  - SPACE PLANTS PER PLANTING PLAN.



**CONTAINER SHRUB PLANTING DETAIL** 50B

**PLANT MATERIAL LIST**

KEY	QNTY.	ITEM
QN	4	NUTTALL OAK / QUERCUS NUTTALLII 3" CAL. 12" MIN HT., STRAIT TRUNK & FULL CANOPY
QM	4	COW OAK / QUERCUS MICHAUXII 3" CAL. 12" MIN HT., STRAIT TRUNK & FULL CANOPY
VA	11	VITEX / VITEX AGNUS CASTUS 'SHOELS CREEK' PURPLE MULTICANE 3" MIN CAL. 6' MIN HT.,
IC	107	CARRISSA HOLLY / ILEX X CARRISSA 3 GAL., 30" MIN. HT. @ 36" O.C.
	17,743 S.F.	BURMUDA SOD / CYNODON TRANSVAALENSIS X C. DACTYLON SEE SPECIFICATIONS-CONTRACTOR RESPONSIBLE FOR VERIFICATION OF QUANTITIES
	962 S.F.	LANDSCAPE BED PREPARATION - SEE SPECIFICATIONS
	LUMP SUMP	GUARANTEE PERIOD - (1) ONE YEAR



**LANDSCAPE NOTES**

**SITE DETAILS**

- 50A TREE PLANTING (TYP.)
- 50B SHRUB PLANTING (TYP.)

SHEET NO. LP-1



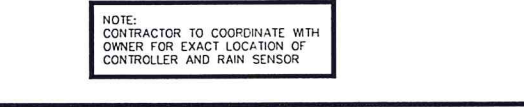
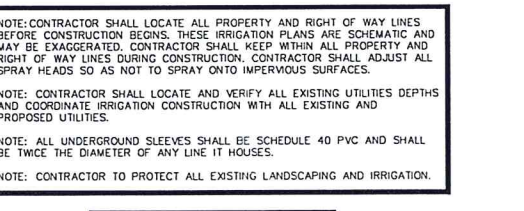
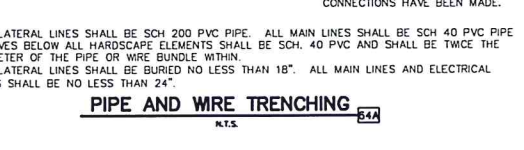
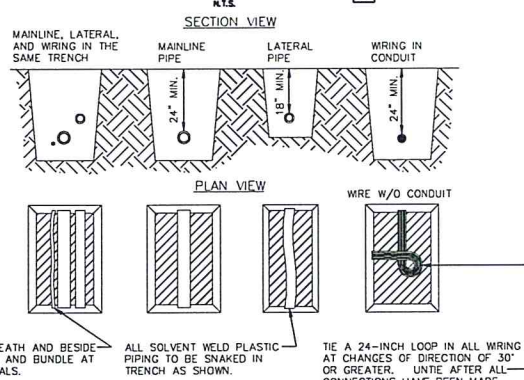
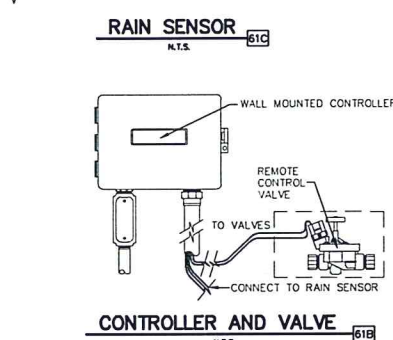
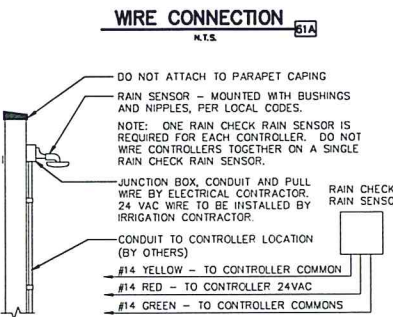
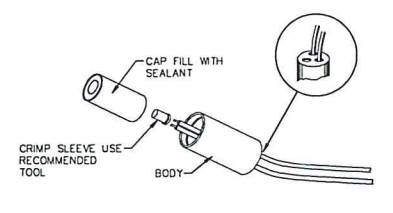
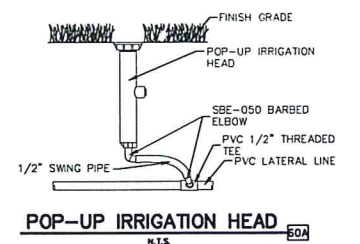
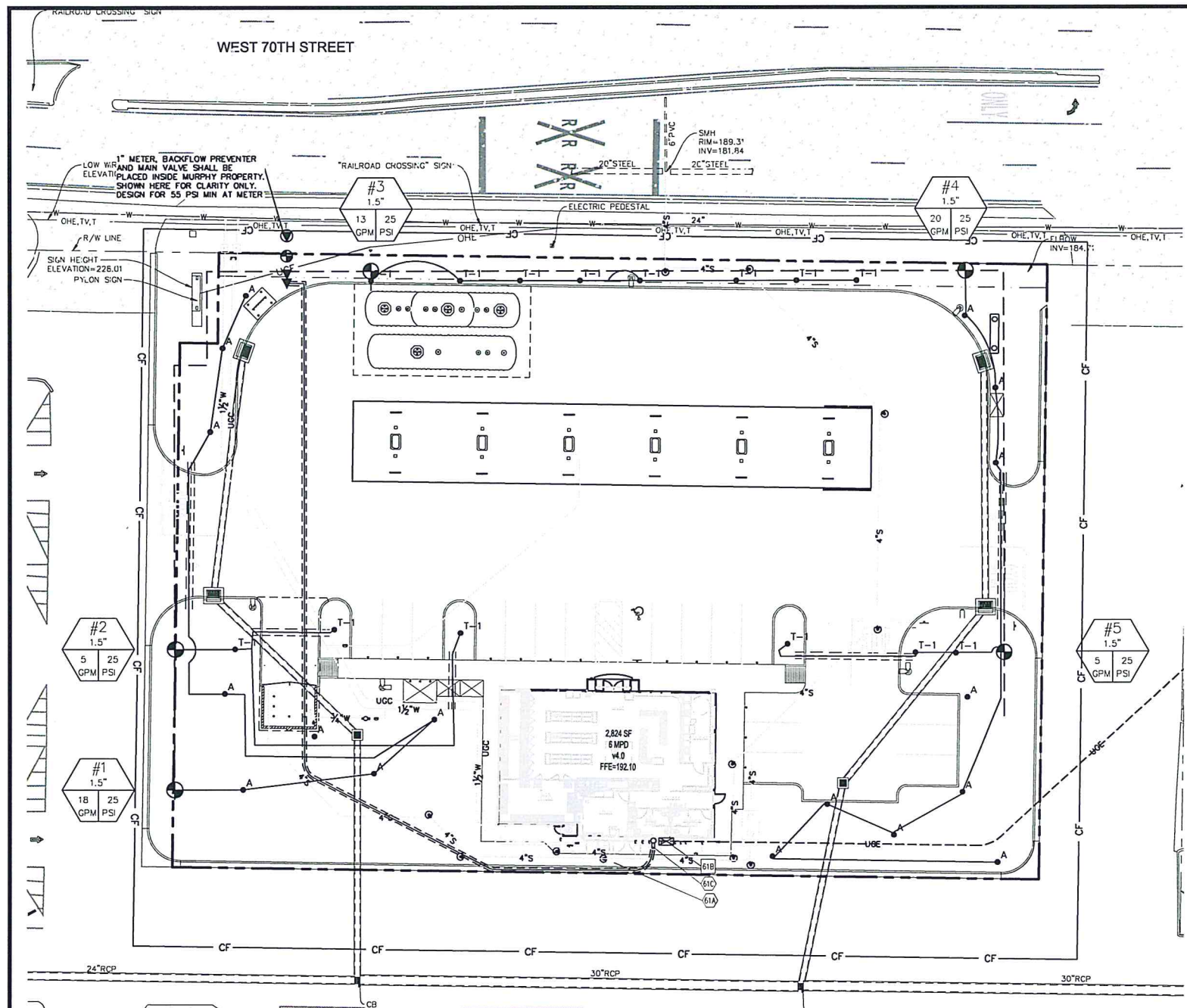
**LANDSCAPE PLAN**  
 MURPHY OIL USA (NTI) #6629  
 WEST 70th STREET  
 SHREVEPORT LOUISIANA

PAN AMERICAN ENGINEERS, LLC  
 1717 JACKSON STREET  
 ALEXANDRIA, LA 71301  
 (504) 318-4733  
 CONTACT: SAM GASSIOTT

**MURPHY OIL USA, INC.**  
 200 PEACH STREET  
 EL DORADO, AR 71730

**MURPHY OIL USA**

PRINTED: 8/21/2024 11:56 AM  
 FILE PATH: C:\Users\Tony\OneDrive\Documents\TTLA\Project Files\Pan American Eng\Shreveport, La Murphy Oil (70th St)\Shreveport Landscape-Irrigation 6-18-24.dwg



THESE DRAWINGS DO NOT INCLUDE COMPONENTS FOR CONSTRUCTION SAFETY.

THE LOCATION OF EXISTING UNDERGROUND UTILITIES ARE SHOWN IN AN APPROXIMATE WAY ONLY. THE CONTRACTOR SHALL DETERMINE THE EXACT LOCATION OF ALL EXISTING UTILITIES BEFORE COMMENCING WORK. HE AGREES TO BE FULLY RESPONSIBLE FOR ANY AND ALL DAMAGES WHICH MIGHT BE OCCASIONED BY HIS FAILURE TO EXACTLY LOCATE AND PRESERVE ANY AND ALL UNDERGROUND UTILITIES.



- EXISTING**
- S SANITARY SEWER LINE
  - W WATER LINE
  - C NATURAL GAS LINE
  - UOE UNDERGROUND ELECTRIC LINE
  - UGT UNDERGROUND TELEPHONE LINE
  - FOE FIBER OPTIC CABLE
  - CONTOUR LINE W/ELEVATION LABEL
- SM SEWER MANHOLE
  - SC SEWER CLEANOUT
  - WM WATER METER
  - WV WATER VALVE
  - FH FIRE HYDRANT
  - LP LIGHT POLE
  - DM DRAINAGE MANHOLE
- PROPOSED**
- BL BOUNDARY LINE
  - IC INTEGRAL CURB
  - CF CONSTRUCTION FENCE
  - L LATERAL LINE WITH SIZE DESIGNATION (SCH 200 PVC)
  - M MAIN LINE WITH SIZE DESIGNATION (SCH 40 PVC)
  - IS IRRIGATION SLEEVING (SCH 40 PVC)
  - Z ZONE DESIGNATION
  - V VALVE SIZE

- GENERAL IRRIGATION NOTES**
- IRRIGATION CONTRACTOR SHALL TEST EXISTING STATIC PRESSURE ON SITE PRIOR TO CONSTRUCTION. SHOULD EXISTING SITE PRESSURE BE BELOW 55 PSI, CONTRACTOR SHALL CONTACT THE ENGINEER PRIOR TO COMMENCEMENT OF CONSTRUCTION.
  - IRRIGATION CONTRACTOR IS RESPONSIBLE FOR INSTALLING MANUAL DRAIN VALVES AT LOWEST POSSIBLE ELEVATION ON IRRIGATION MAIN SO AS TO PROVIDE POSITIVE DRAINAGE OF IRRIGATION MAIN DURING WINTER MONTHS, OR PROVIDE BLOWOUT ASSEMBLY. INSTALLATION SHALL BE PER DETAIL 62C (THIS SHEET).
  - ALL LATERAL LINES SHALL BE EQUIPPED WITH AUTOMATIC DRAIN VALVES AT LOW POINTS PER DETAIL 62D (THIS SHEET).
  - CONTRACTOR SHALL COORDINATE CONTROLLER LOCATION WITH GENERAL CONTRACTOR. 110 VOLT ELECTRICAL SERVICE FOR IRRIGATION CONTROLLER IS TO BE INSTALLED IN THE STORAGE ROOM BY GENERAL CONTRACTOR.
  - CONTRACTOR SHALL COORDINATE CONSTRUCTION OF IRRIGATION SYSTEM WITH GENERAL CONTRACTOR AND LANDSCAPE CONTRACTOR PRIOR TO COMMENCEMENT OF CONSTRUCTION.
  - LOCATION FOR THIS UTILITY AS SHOWN IS FOR DRAWING PURPOSES ONLY. CONTRACTOR SHALL VERIFY THE EXACT LOCATION IN FIELD PRIOR TO THE CONSTRUCTION OF THE PROPOSED UTILITY LINE TO BE CONNECTED. CONTRACTOR SHALL NOTIFY THE ENGINEER IF THE DESIGN AS SHOWN IS NOT ACHIEVABLE.
  - ALL R.C.V. CONTROLLER WIRES ARE TO BE IN CONDUIT WHILE UNDER PAVING. CONDUIT TO BE INSTALLED BY GENERAL CONTRACTOR. ROUTING OF R.C.V. WIRES TO CONTROL VALVES SHALL BE BY THE IRRIGATION CONTRACTOR.
  - ALL BELOW GRADE LOW VOLTAGE WIRING CONNECTIONS SHALL BE INSTALLED PER DETAIL 61A (THIS SHEET).
  - DO NOT INSTALL IRRIGATION AT PYLON SIGN LOCATION UNTIL SIGN HAS BEEN INSTALLED.
  - ALL LATERAL LINES NOT LABELED SHALL BE 3/4" DIAMETER.
  - MINIMUM COVER FROM TOP OF PIPING TO FINISHED GRADE SHALL BE AS DESCRIBED IN DETAIL 64A.
  - IRRIGATION TO BE AS MANUFACTURED BY " " ZONED TYPE SYSTEM. INSTALL CONTROLS INSIDE UTILITY ROOM. PROVIDE 4" DIA. SWEEP PVC SLEEVE THROUGH CONCRETE FLOOR AREA FOR ACCESS FROM EXTERIOR TO INTERIOR OF UTILITY ROOM.
  - PROVIDE 4" DIA. PVC SLEEVES BETWEEN 12" AND 15" BELOW GRADE AT ALL DRIVE ENTRANCES AND SIDEWALKS.
  - CONTRACTOR TO REFER TO MASTER DEVELOPMENT SPECIFICATIONS FOR LANDSCAPE/IRRIGATION WORK OUTSIDE MURPHY OIL PARCEL.
  - CONTRACTOR IS TO PROTECT EXISTING LANDSCAPE AND IRRIGATION MATERIALS.
  - CONTRACTOR IS TO VERIFY LOCATION OF MASTER DEVELOPMENT SPECIFICATIONS, VALVE BOXES, CONTROL BOXES, BACKFLOW PREVENTION DEVICES AND OTHER ITEMS WHICH ARE PART OF THE SYSTEM. IF DAMAGED THEY MUST BE REPAIRED AT THE CONTRACTOR'S COST.
  - IRRIGATION HEAD SHALL NOT BE DESIGNED AND/OR INSTALLED WITHIN 5' OF ANY TURNING RADIUS AND 18" WITHIN PARKING LOT PAVEMENT.

- IRRIGATION NOTES**
- CONDUIT FOR R.C.V. WIRES BY GENERAL CONTRACTOR, ROUTING TO CONTROL VALVES BY IRRIGATION CONTRACTOR (NOT SHOWN ON PLANS)
  - 1" IRRIGATION METER (PER LOCAL CODES)
  - MASTER CONTROL VALVE (RAINBIRD PEB 150)
  - (1) 4" PVC SLEEVE FOR IRRIGATION LINE. SEE UTILITY PLAN FOR AND INSTALLATION SPECIFICATIONS.
  - (2) 4" PVC SLEEVES FOR FUTURE USE. SEE UTILITY PLAN FOR INSTALLATION SPECIFICATIONS
- IRRIGATION DETAILS**
- 60A POP-UP IRRIGATION HEAD (TYP.) (SEE NOZZLE LIST THIS SHEET)
  - 61B CONTROLLER AND VALVES (RAINBIRD ESP-6LX)
  - 61C RAIN SENSOR
  - 61E ELECTRIC VALVE AND BOX (TYP.) (RAINBIRD PEB 150)
  - 62A REDUCED PRESSURE BACKFLOW PREVENTOR (WATTS 909) SIZED PER LOCAL CODE
  - 62C MANUAL DRAIN VALVE (NOT SHOWN ON PLANS)
  - 62D AUTOMATIC DRAIN VALVE (NOT SHOWN ON PLANS)
  - 64A PIPE AND WIRE TRENCHING (TYP.)

**EXECUTIVE DIRECTOR APPROVAL**

Date 10-24-24 By [Signature]

KEY	QNTY.	DESCRIPTION
A	17	3504-PC-SAM-1.0
T1	14	1812-SAM-9-SST

NOTE: CONTRACTOR SHALL LOCATE ALL PROPERTY AND RIGHT OF WAY LINES BEFORE CONSTRUCTION BEGINS. THESE IRRIGATION PLANS ARE SCHEMATIC AND MAY BE EXAGGERATED. CONTRACTOR SHALL KEEP WITHIN ALL PROPERTY AND RIGHT OF WAY LINES DURING CONSTRUCTION. CONTRACTOR SHALL ADJUST ALL SPRAY HEADS SO AS NOT TO SPRAY ONTO IMPERVIOUS SURFACES.

NOTE: CONTRACTOR SHALL LOCATE AND VERIFY ALL EXISTING UTILITIES DEPTHS AND COORDINATE IRRIGATION CONSTRUCTION WITH ALL EXISTING AND PROPOSED UTILITIES.

NOTE: ALL UNDERGROUND SLEEVES SHALL BE SCHEDULE 40 PVC AND SHALL BE TWICE THE DIAMETER OF ANY LINE IT HOUSES.

NOTE: CONTRACTOR TO PROTECT ALL EXISTING LANDSCAPING AND IRRIGATION.

NOTE: CONTRACTOR TO COORDINATE WITH OWNER FOR EXACT LOCATION OF CONTROLLER AND RAIN SENSOR

**SHEET NO. IR-1**

**IRRIGATION PLAN**  
 MURPHY OIL USA (NTI) #6629  
 WEST 70th STREET  
 SHREVEPORT LOUISIANA

**MURPHY OIL USA, INC.**  
 200 PEACH STREET  
 EL DORADO, AR 71730

**MURPHY OIL USA**

**PAN AMERICAN ENGINEERS, LLC**  
 4717 JACKSON STREET  
 ALEXANDRIA, LA 71301  
 (504) 473-2100  
 CONTACT: SAM GASSIOTT

DATE: 6/28/24  
 SCALE: AS SHOWN

