

LOT #2 7025 SAND BEACH BLVD. SHREVEPORT, LA. 71105

DETENTION
 Pre-Development Runoff - 0.742 cfs (10-yr Storm Event)
 Post-Development Runoff - 0.659 cfs (100-yr Storm Event)

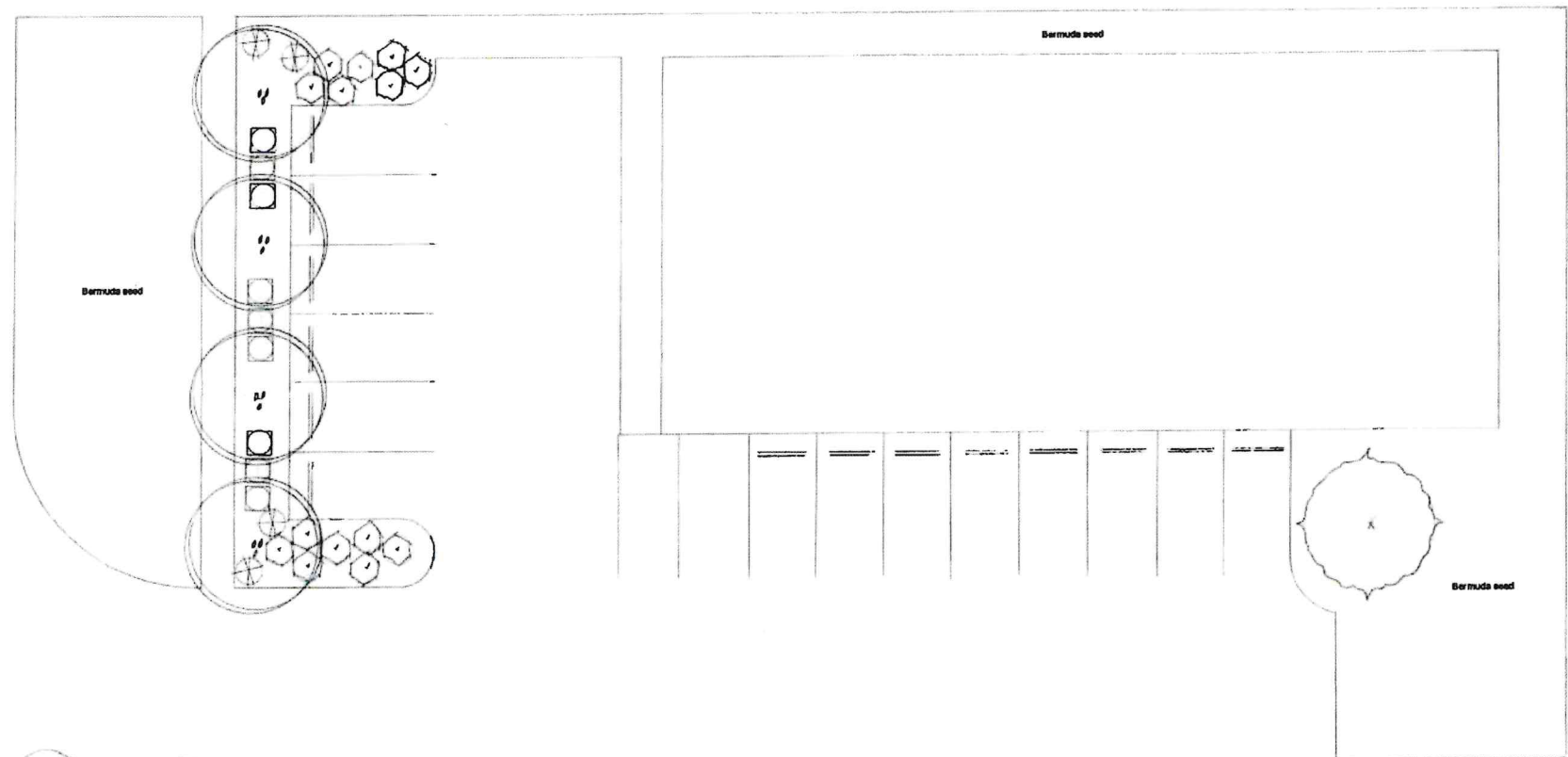
**EXECUTIVE
 DIRECTOR
 APPROVAL**


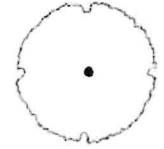
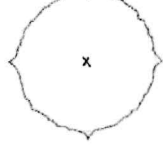


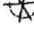
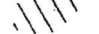
9.10.24 *AC*
 Date By

8/2/2024 8:45:38 AM A:\CONCEPT PLAN\082524\082524_SIT_PLAN.DWG

<p>CONCEPTUAL SITE PLAN</p>	<p>MOHR AND ASSOCIATES, INC. Consulting Civil Engineers & Land Surveyors 1324 N. Hearne Ave., Ste 301 www.MohrAndAssoc.com Shreveport, Louisiana 71107 (318) 686-7190</p>
<p>DATE: 7-01-2024</p> <p>Scale: 1" = 20'</p> <p>Drawn: B. ANDERSON</p> <p>Job: 39345</p> <p>Sheet: 1</p> <p>of 1 Sheets</p>	<p>DATE: _____</p> <p>REVISIONS: _____</p> <p>NO.: _____</p> <p>DATE: _____</p>

2019



-  30 gal. Crepe myrtle (4)
-  3" cal. Live oak
-  30 gal. Vitex
-  5 gal. Bonwood (5)
-  3 gal. Encore azalea (25)
-  5 Gal. Purple fountain grass (5)
-  1 Gal. Liriope big blue 18" o.c.

Office / Warehouse for Brian King
 Sand Beach Boulevard
 Shreveport, Louisiana

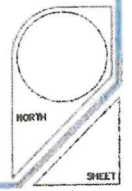
DATE: 9/5/24 Landscape Plan

REVISIONS:

EXECUTIVE
 DIRECTOR
 APPROVAL

9-10-24 
 Date By

Scale: 1" = 10'

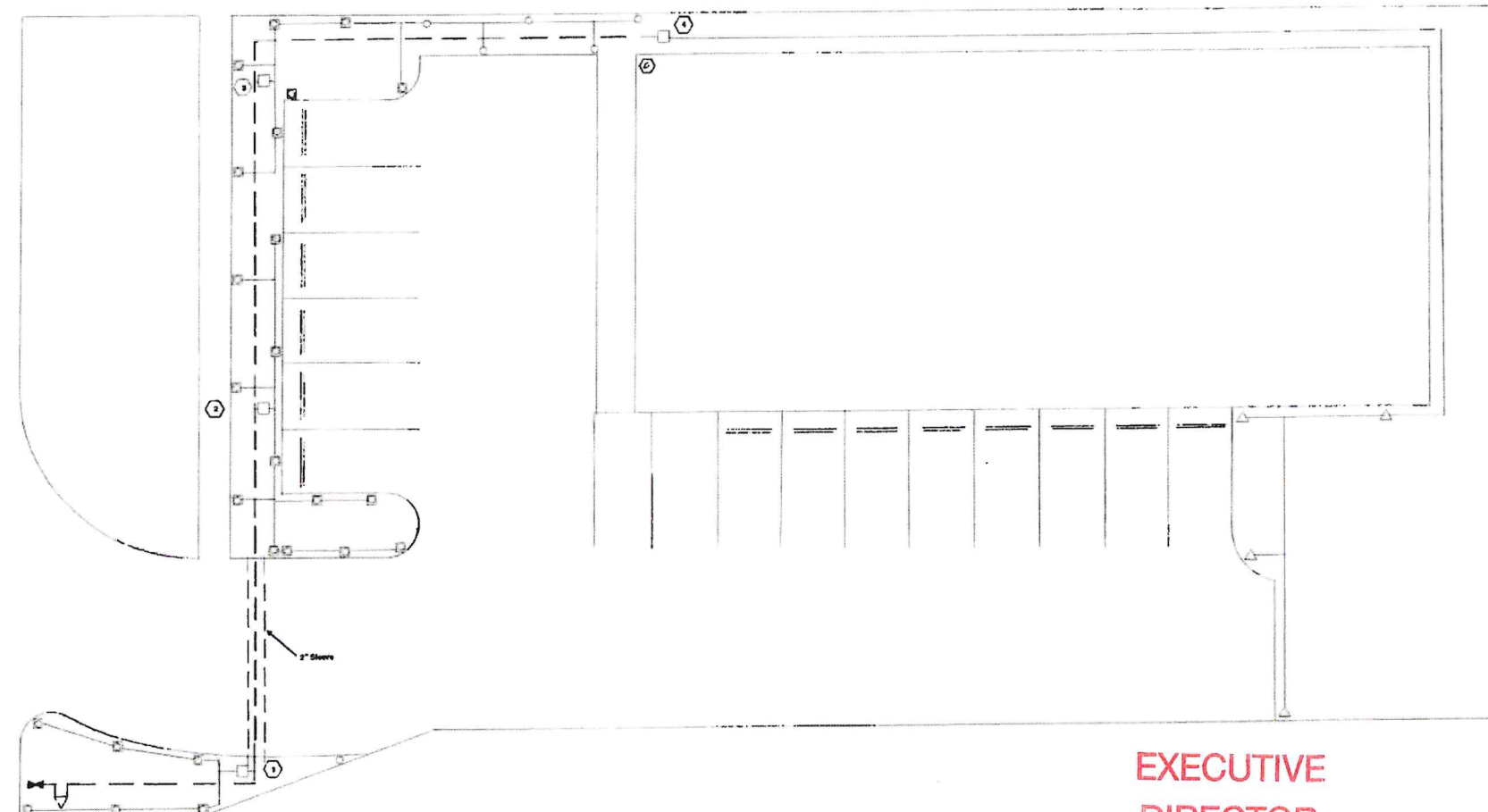


FLEMING
 LANDSCAPE & IRRIGATION

1901 ST. VIRGILY AVENUE
 SHREVEPORT, LA 71104
 P. 918-214-2590
 F. 918-214-2591
 FLB@FLEMINGLANDSCAPE.COM

SHEET

2019



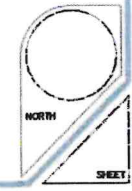
Irrigation Legend

- 4" Pop-up sprinkler head
- 12" Pop-up sprinkler head
- △ M.P. rotary sprinkler head
- 1" Automatic valve
- ⊙ Irrigation controller
- - - 1" Mainline pipe
- 1" section line pipe
- △ 1" Pressure backflow
- ⊞ 1" Water meter

**EXECUTIVE
DIRECTOR
APPROVAL**

9-10-24 ac Chile
Date By

Scale: 1" = 10'



DATE: 9/9/24

REVISIONS:

FLEMING
LANDSCAPE & IRRIGATION

1001 ST. VINCENT AVENUE
SHREVEPORT, LA 71109
504-314-0980
504-314-2891
FLEMINGLANDSCAPE.COM

SHEET

DATE	REVISION	DATE	REVISION
7/28/24	1 ADD LUMEN FOR EXT. LIGHTS		

Future Office Building

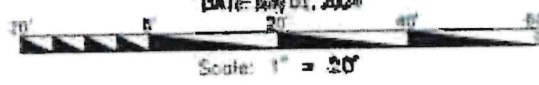
SAND BEACH BLVD.
 SHREVEPORT, LA.

DATE	7/28/24
BY	JAS
NO SCALE	

E1

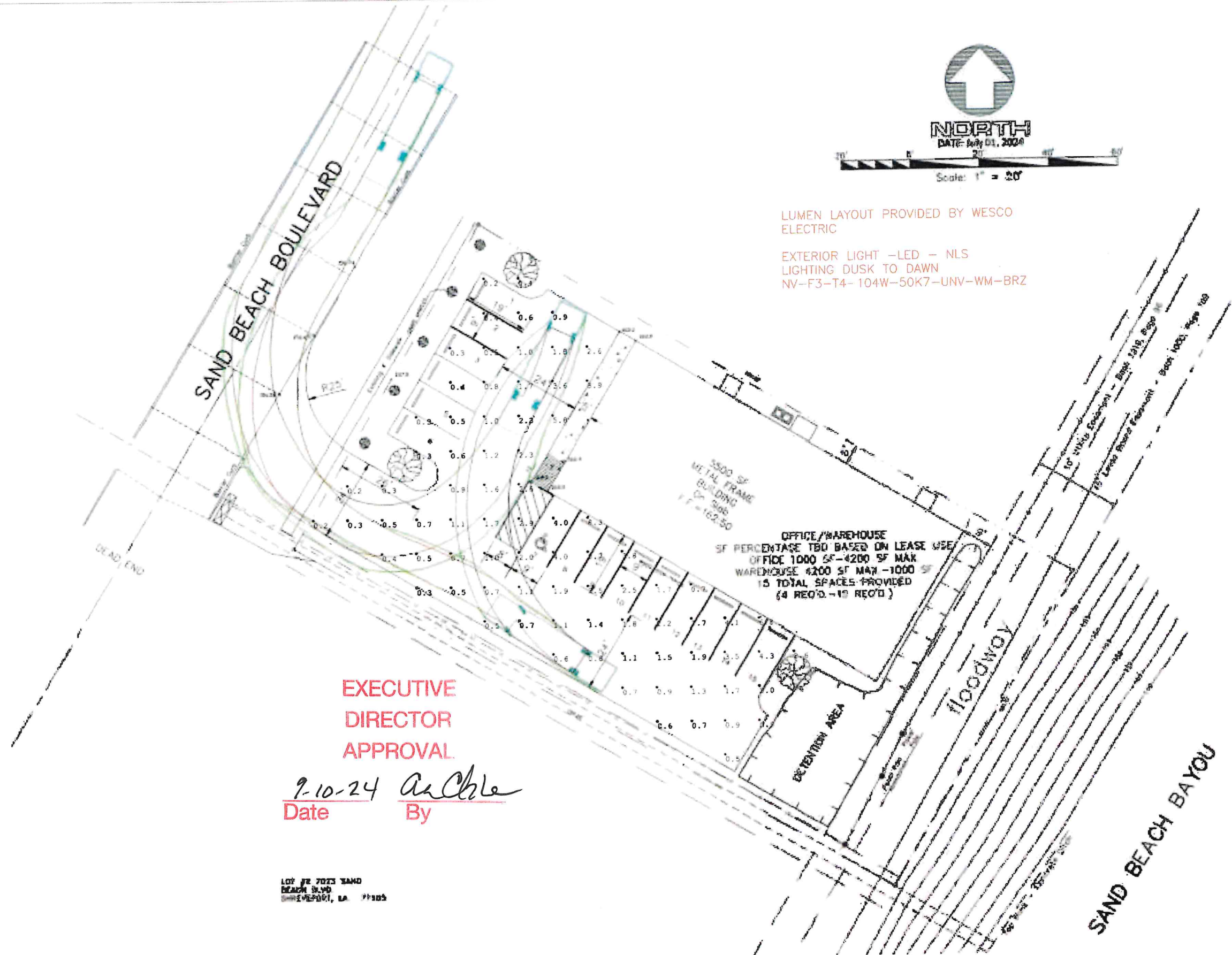


NORTH
 DATE: July 01, 2024



LUMEN LAYOUT PROVIDED BY WESCO ELECTRIC

EXTERIOR LIGHT -LED - NLS
 LIGHTING DUSK TO DAWN
 NV-F3-T4- 104W-50K7-UNV-WM-BRZ



**EXECUTIVE
 DIRECTOR
 APPROVAL**

9-10-24 *AsChle*
 Date By

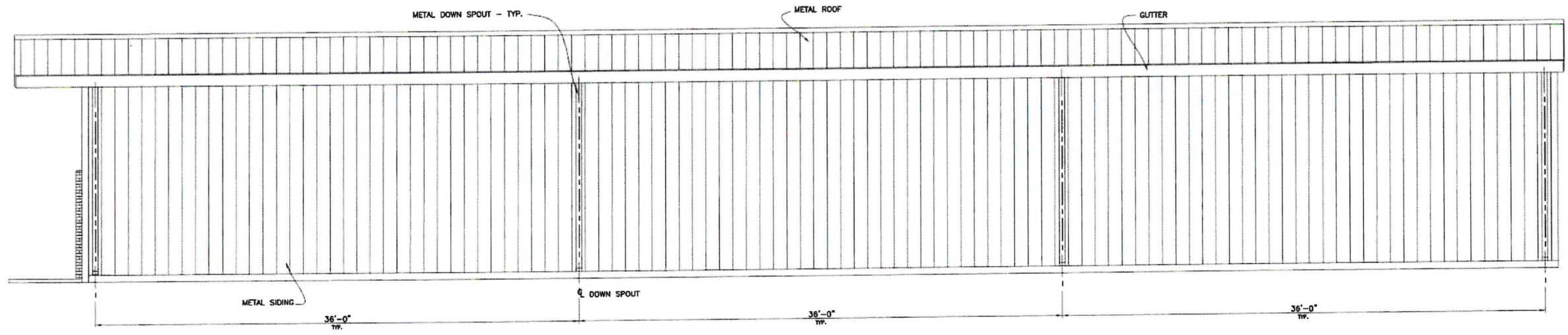
LOT #2 7023 SAND
 BEACH BLVD
 SHREVEPORT, LA 71105





K-W DRAFTING
ARCHITECTURAL
1109 W. BROADWAY, SUITE 200
SHREVEPORT, LA 71201
PHONE: (504) 387-9911

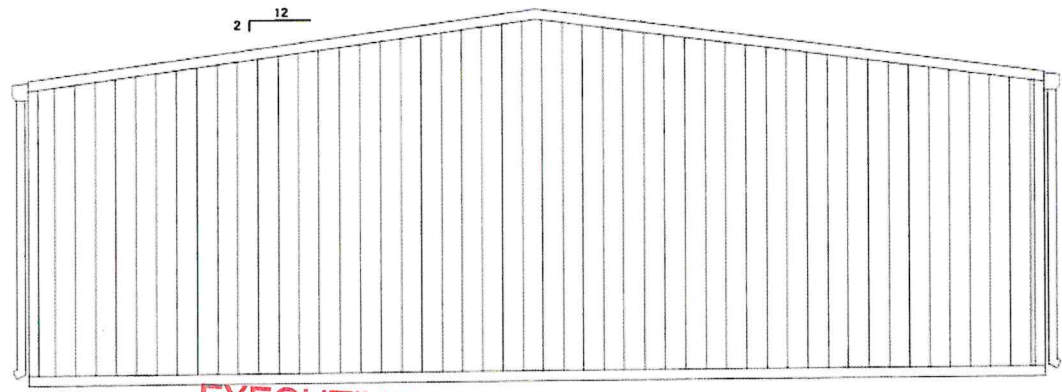
NO.	DATE	REVISION
1		ADDED LEDGER STONE TO FRONT



RIGHT SIDE ELEVATION



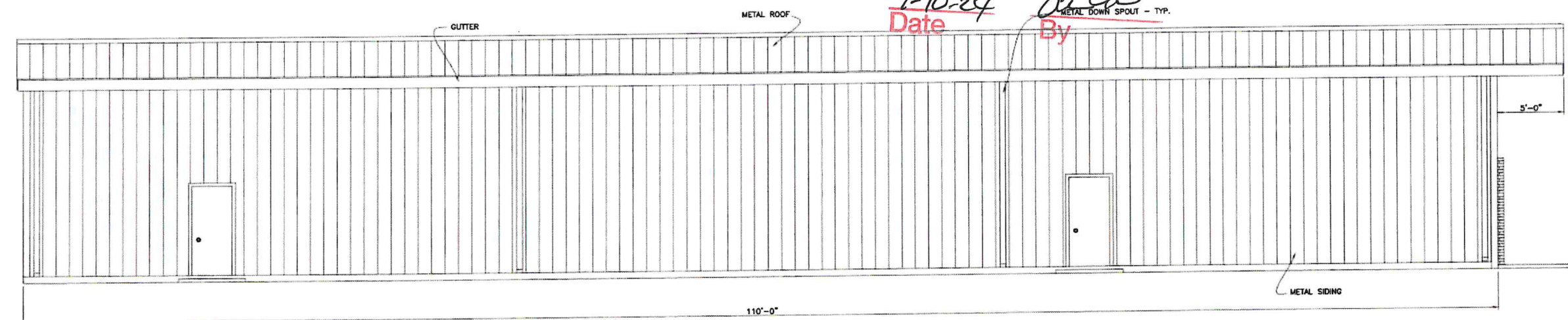
FRONT ELEVATION



REAR ELEVATION

**EXECUTIVE
DIRECTOR
APPROVAL**

9-10-24
Date *[Signature]*
By
METAL DOWN SPOUT - TYP.



LEFT SIDE ELEVATION

Future Office Building

SAND BEACH BLVD.
SHREVEPORT, LA.

NO.	FILE
DRAWN	KWD
DATE	12/6/23
APPROVED	
DATE	
SCALE	1/4"=1'
SHEET	