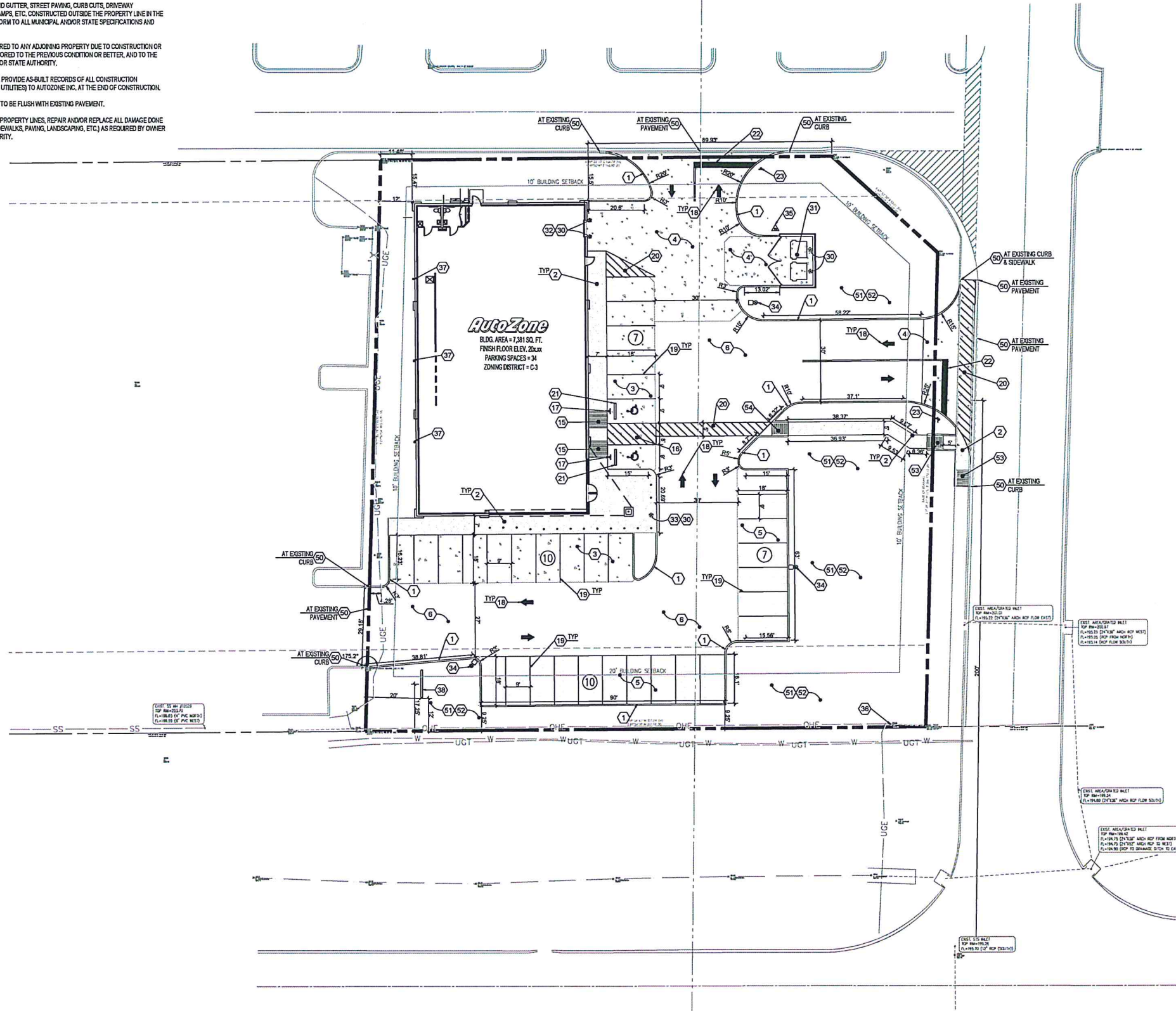


GENERAL AUTOZONE NOTES

1. PROPERTY LINE AND RIGHT-OF-WAY MONUMENTS SHALL NOT BE DISTURBED BY CONSTRUCTION. IF DISTURBED, THEY SHALL BE RESET TO THEIR ORIGINAL LOCATIONS AT THE CONTRACTOR'S EXPENSE BY A REGISTERED LAND SURVEYOR.
2. PROOF ROLL BUILDING AND ALL PARKING AREAS. NOTIFY AUTOZONE INC. OF ANY UNACCEPTABLE AREAS.
3. BUILDING DIMENSIONS SHOWN ON THE CIVIL ENGINEERING PLANS ARE FOR REFERENCE PURPOSES ONLY. CONTRACTOR SHALL USE THE ARCHITECTURAL AND STRUCTURAL PLANS FOR EXACT BUILDING DIMENSIONS.
4. ALL SITE DIMENSIONS ARE REFERENCED TO THE FACE OF CURBS OR EDGE OF PAVING UNLESS OTHERWISE NOTED.
5. ALL SIDEWALKS, CURBS AND GUTTER, STREET PAVING, CURB CUTS, DRIVEWAY APPROACHES, HANDICAP RAMPS, ETC. CONSTRUCTED OUTSIDE THE PROPERTY LINE IN THE RIGHT-OF-WAY SHALL CONFORM TO ALL MUNICIPAL AND/OR STATE SPECIFICATIONS AND REQUIREMENTS.
6. ALL DISTURBANCE INCURRED TO ANY ADJOINING PROPERTY DUE TO CONSTRUCTION OR DEMOLITION SHALL BE RESTORED TO THE PREVIOUS CONDITION OR BETTER, AND TO THE SATISFACTION OF THE CITY OR STATE AUTHORITY.
7. THE CONTRACTOR SHALL PROVIDE AS-BUILT RECORDS OF ALL CONSTRUCTION (INCLUDING UNDERGROUND UTILITIES) TO AUTOZONE INC. AT THE END OF CONSTRUCTION.
8. EDGE OF NEW PAVEMENT TO BE FLUSH WITH EXISTING PAVEMENT.
9. FOR AREAS OUTSIDE THE PROPERTY LINES, REPAIR AND/OR REPLACE ALL DAMAGE DONE TO EXISTING ELEMENTS (SIDEWALKS, PAVING, LANDSCAPING, ETC.) AS REQUIRED BY OWNER AND/OR GOVERNING AUTHORITY.

© COPYRIGHT 2007



SITE LEGEND

- ⑩ PARKING STALL COUNT - SEE PLANS
- HEAVY DUTY ASPHALT PAVING (SEE DETAIL SHEET)
- CONCRETE SIDEWALK (SEE DETAIL SHEET)
- HEAVY DUTY CONCRETE PAVING (SEE DETAIL SHEET)
- REGULAR DUTY CONCRETE PAVEMENT AT PARKING STALLS AROUND BUILDING (SEE DETAIL SHEET)
- CONCRETE CURBS WITH EXPOSED BACK OF CURB
- CONCRETE CURB AT ASPHALT/CONCRETE

KEYNOTES

- PAVEMENT AND CURBING**
1. CONCRETE CURB @ CONCRETE/ASPHALT PAVING - SEE DETAIL 1 & 2 / C4.0
 2. CONCRETE SIDEWALK - SEE DETAIL 27/C4.0 - SEE DETAIL 22/C4.0 FOR SIDEWALKS AROUND BUILDING
 3. REGULAR DUTY CONCRETE PAVING AT PARKING STALLS ALONG BUILDING - SEE DTL. 4/C4.0. EXPANSION AND CONTROL JOINTS - SEE DTL. 23 & 24 / C4.0. MAXIMUM SPACING FOR CONTROL JOINTS PER SOILS REPORT.
 4. HEAVY DUTY CONCRETE PAVING - SEE DTL. 4/C4.0. EXPANSION AND CONTROL JOINTS - SEE DTL. 23 & 24 / C4.0. MAXIMUM SPACING FOR CONTROL JOINTS PER SOILS REPORT.
 5. REGULAR DUTY ASPHALT PAVING - SEE DTL. 3/C4.0. PROVIDE ALTERNATE CONCRETE BID - SEE DTL. 4/C4.0
 6. HEAVY DUTY ASPHALT PAVING - SEE DTL. 3/C4.0. PROVIDE ALTERNATE CONCRETE BID - SEE DTL. 4/C4.0

- PAVEMENT STRIPING / ADA FEATURES / TRAFFIC SIGNAGE**
15. ADA ACCESSIBLE RAMP - SEE DETAIL 19/C4.0 - MAX. SLOPE 1:12 (8.33%), MAX. CROSS SLOPE 1:50 (2.00%) TRUNCATED DOME TO BE A CONTRASTING COLOR.
 16. ADA PARKING AREA - SEE THIS PLAN FOR DIMENSIONS - SEE DETAILS 6.7, AND 13/C4.0
 17. ADA PARKING SIGN - SEE DETAIL 12/C4.0 O.C. TO PROVIDE ONE VAN ACCESSIBLE SIGN.
 18. ON-SITE PAVEMENT MARKINGS - SEE DETAIL 25 & 26/C4.0
 19. 4" WIDE PARKING STRIPE PAINTED YELLOW (TYP.)
 20. 4" WIDE DIAGONAL STRIPES PAINTED YELLOW AT 2 FT. O.C.
 21. 6'-2" LONG CONCRETE WHEEL STOP PINNED TO PAVEMENT (TYPICAL), LOCATE 7'-8" FROM FACE OF CURB OR SIDEWALK SEE DETAIL 17 / C4.0
 22. STOP BAR PAINTED WHITE PER CITY SPECS.
 23. "STOP" SIGN PER CITY SPECIFICATIONS

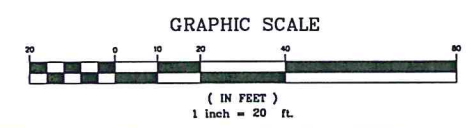
- AUTOZONE SITE FEATURES**
30. PIPE GUARD - SEE DETAIL 16 / C4.0
 31. DUMPSTER LAYOUT - SEE DETAILS 8, 9, 10, & 11 / C4.0
 32. SERVICE DOOR PLAN - SEE DETAIL 15 / C4.0
 33. BOLLARD PLAN - SEE DETAIL 14 / C4.0
 34. CONCRETE LIGHT POLE BASE - SEE DETAIL 13 / C4.0 AM LIGHT FIXTURE IN DIRECTION AS INDICATED. SEE ELECTRICAL PLANS FOR ROUTING
 35. FREEZELESS YARD HYDRANT AT BUILDING - SEE DETAIL 6 ON SHEET M2
 36. APPROXIMATE LOCATION FOR POLE AND POLE MOUNTED TRANSFORMER PER SERVICE PROVIDER SPECIFICATIONS - COORDINATE WITH SERVICE PROVIDER PRIOR TO CONSTRUCTION
 37. PROVIDE DOWNSPOUT CONNECTOR AT BUILDING DOWN SPOUT - SEE ARCHITECTURAL PLANS - SEE DETAIL 21 / C4.0 - SEE GRADING PLAN FOR INVERTS
 38. PROVIDE MONUMENT SIGN - 610 CP - 15" OAH, 10" 6" X 2" SEE SIGNAGE SHEETS FOR DETAILS - FINAL LOCATION AND DESIGN TO BE DETERMINED DURING SIGN PERMIT REVIEW

- ADDITIONAL SITE FEATURES**
50. TIE TO EXISTING - MATCH GRADE
 51. GRASS AREA - PROVIDE 6" TOPSOIL & SOD COMMON TO REGION ON ALL DISTURBED AREAS NOT TO BE PAVED
 52. SLOPE GRADE FROM BACK OF CURB DOWN TO MATCH THE EXISTING PROPOSED GRADE - SEE GRADING PLAN
 53. ADA ACCESSIBLE RAMP PER CITY SPECS.
 54. ADA ACCESSIBLE RAMP - SEE DETAIL SHEET C4.1

EXECUTIVE DIRECTOR APPROVAL

7-6-24 Date *[Signature]* By

ALL DISTURBED AREA SHALL BE STABILIZED WITH SOD, COMMON TO THE REGION - CONTRACTOR TO GUARANTEE AND MAINTAIN ALL NEW SODDED AREAS FOR 60 DAYS MINIMUM, AND ALL SODDED AREAS ARE STABILIZED.
 PROVIDE (2) 4" PVC CONDUITS UNDER DRIVES TO ALL LANDSCAPED AREAS. PROVIDE 2" COVER AND CAP OFF. MARK STUB OUT WITH FLAGMARKER.



FLOOD NOTE:
 BY GRAPHIC PLOTTING ONLY, THIS PROPERTY IS LOCATED IN ZONE "X", AREA OF MINIMAL FLOOD HAZARD, OF THE FLOOD INSURANCE RATE MAP, COMMUNITY PANEL NO. 22017C0488H, WHICH BEARS AN EFFECTIVE DATE OF MAY 19, 2014. THIS PROPERTY IS NOT IN SPECIAL FLOOD HAZARD ZONE.

CES Civil Engineering Services
 7705 Spicer Form Lane phone: (615) 533-0401
 Fairview, Tennessee fax: (615) 523-8865
 37062 e-mail: ray@civilengineeringservices.net
 Engineering, Environmental, Land Planning



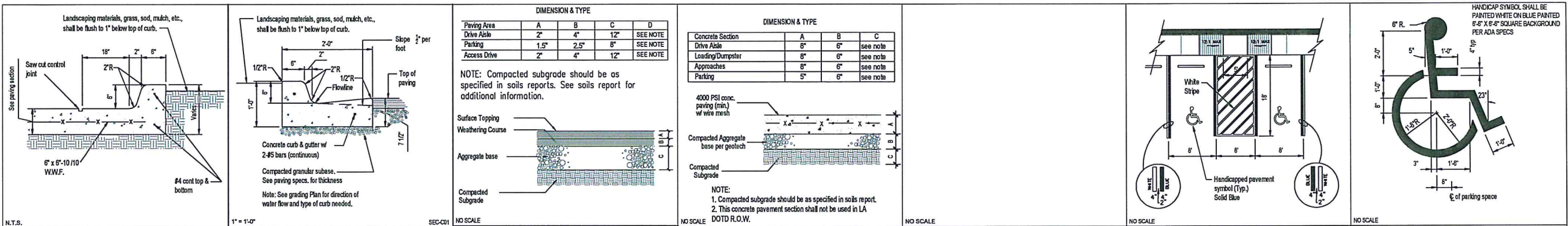
NAD83 MS STATE PLANE

REVISIONS	1	2	3	4	5	6

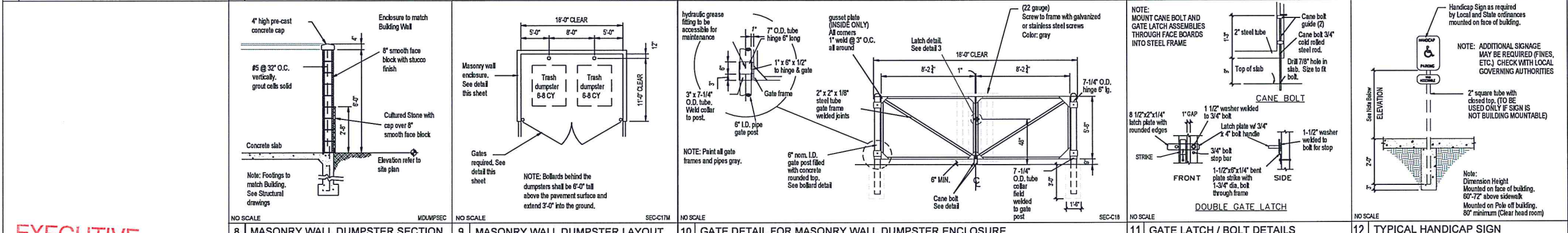
AutoZone Store No. 5071
 HWY 525 AND INTERSTATE 49
 SHREVEPORT LA 70592
SITE PLAN

Owner / Developer: AUTOZONE STORES LLC
 123 South Front Street, 3rd Floor
 Memphis, Tennessee 38103
 TEL: (901) 495-8994 FAX: (901) 495-8969
 For Bidding & Contractor Information Contact:
 Dodge Data & Analytics, Tel. 413-930-4215
 Cindy.searcy@construction.com

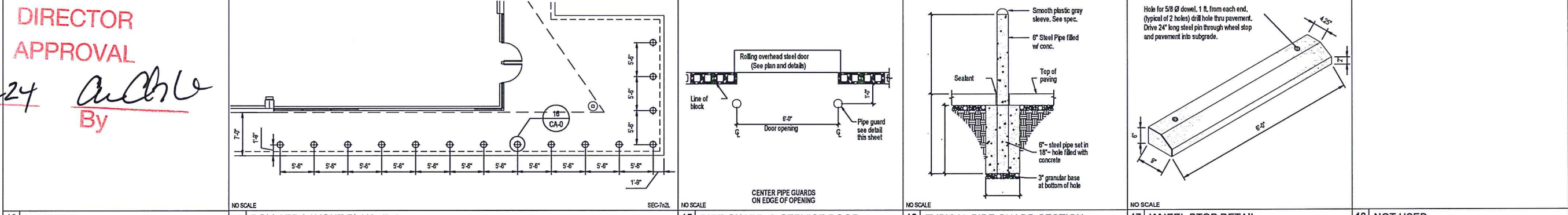
04/02/2024
 7N2
C1.0



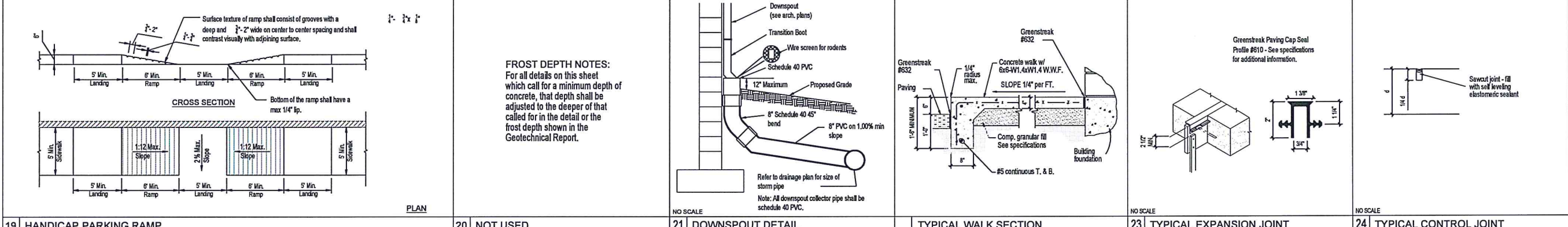
1 CONCRETE MONOLITHIC CURB 2 CONC. CURB & GUTTER (at Asphalt paving only) 3 ASPHALT PAVEMENT SECTION 4 CONCRETE PAVING SECTION 5 NOT USED 6 HANDICAP PARKING DETAIL 7 INT'L BARRIER FREE SYMBOL



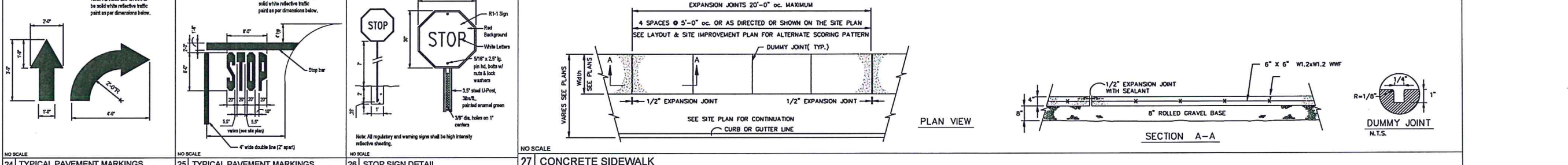
8 MASONRY WALL DUMPSTER SECTION 9 MASONRY WALL DUMPSTER LAYOUT 10 GATE DETAIL FOR MASONRY WALL DUMPSTER ENCLOSURE 11 GATE LATCH / BOLT DETAILS 12 TYPICAL HANDICAP SIGN



13 NOT USED 14 BOLLARD LAYOUT PLAN - 7n2 15 PIPE GUARD @ SERVICE DOOR 16 TYPICAL PIPE GUARD SECTION 17 WHEEL STOP DETAIL 18 NOT USED



19 HANDICAP PARKING RAMP 20 NOT USED 21 DOWNSPOUT DETAIL 22 TYPICAL WALK SECTION 23 TYPICAL EXPANSION JOINT 24 TYPICAL CONTROL JOINT



24 TYPICAL PAVEMENT MARKINGS 25 TYPICAL PAVEMENT MARKINGS 26 STOP SIGN DETAIL 27 CONCRETE SIDEWALK

EXECUTIVE DIRECTOR APPROVAL
 9-6-24 Date By *A. White*

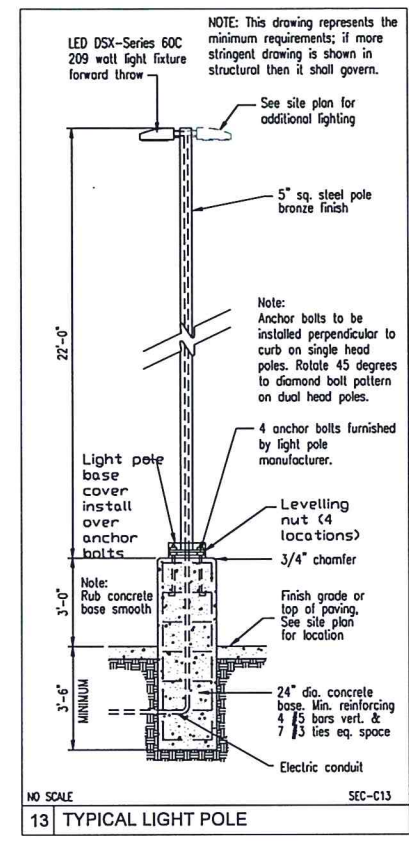
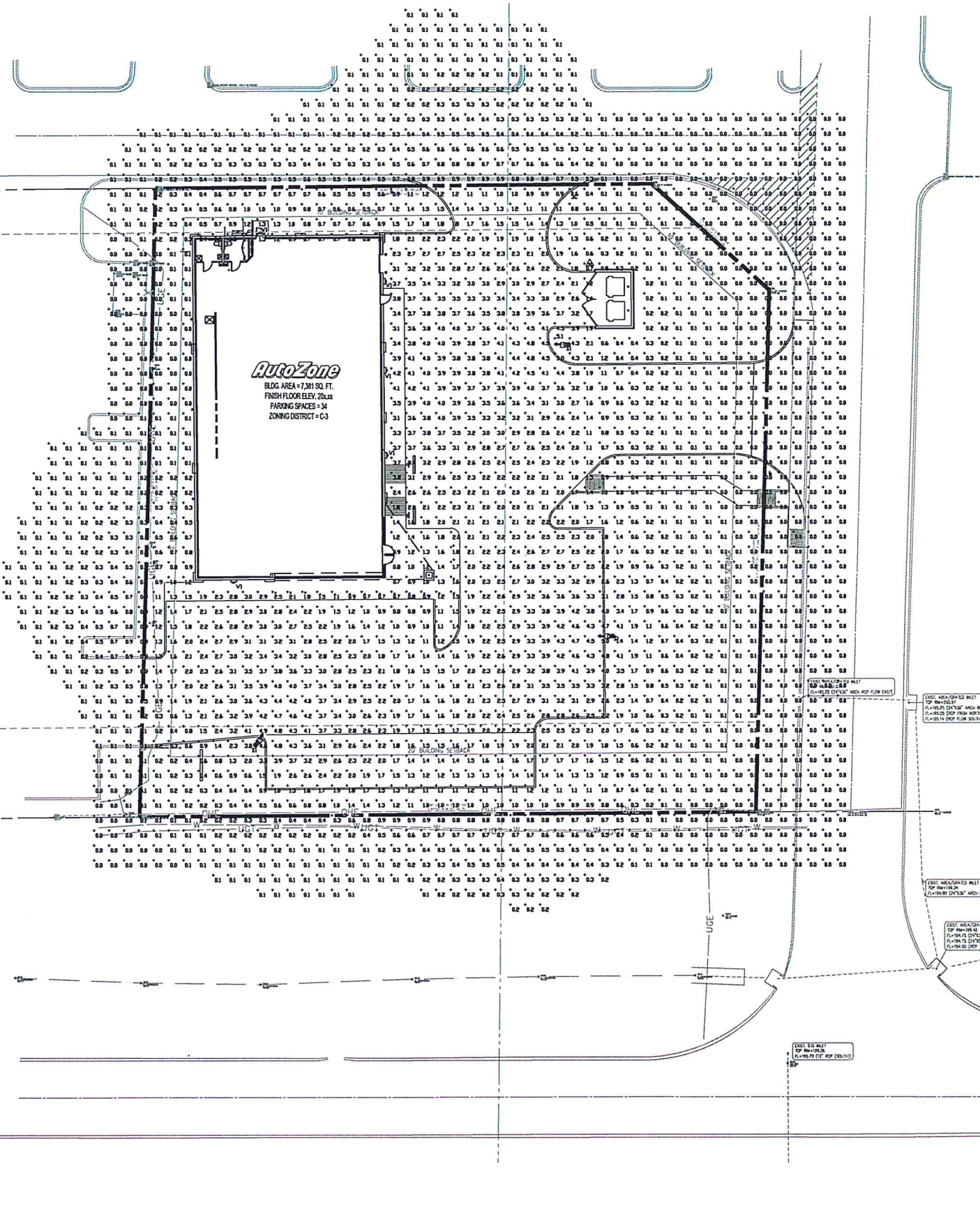
NAD83 MS STATE PLANE

	4	5	6
REVISIONS	1	2	3
Date	09/05/2023		
Description			

AutoZone Store No. 5071
 HWY 525 AND INTERSTATE 49
 SHREVEPORT LA 70592
DETAIL SHEET 1

Owner / Developer: AUTOZONE STORES LLC
 123 South Front Street, 3rd Floor
 Memphis, Tennessee 38103
 TEL: (901) 495-8994 FAX: (901) 495-8969
 For Bidding & Contractor Information Contact:
 Dodge Data & Analytics, Tel. 41-930-4215
 Cindy.searcy@construction.com

04/02/2024
 7N2
C4.0



LIGHTING NOTES: 1. THE CONTRACTOR SHALL BE RESPONSIBLE FOR CONTROLLING AND MONITORING BY AN ENERGY MANAGEMENT SYSTEM CALLED METEOR WHICH IS CONTROLLED AT AUTOTONE COMPASS STORES...

LUMINAIRE SCHEDULE table with columns: TYP, SYMBOL, DESCRIPTION, LAMP, LUMENS, LLF, CITY.

STATISTICS table with columns: Description, Symbol, Avg, Min, Max, Material, Any/Len.

EXECUTIVE DIRECTOR APPROVAL

9-6-24 Date By [Signature]



REVISIONS table with columns: No., Description, Date, By.

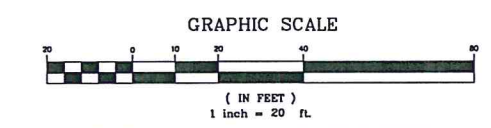
AutoZone Store No. 5071 HWY 525 AND INTERSTATE 49 SHREVEPORT LA 70592

Owner / Developer: AUTOZONE STORES LLC 123 South Front Street, 3rd Floor Memphis, Tennessee 38103

04/02/2024 7N2 C5.0

D-Series Size 1 LED Wall Luminaire product page with specifications, introduction, and ordering information.

D-Series Size 1 LED Area Luminaire product page with specifications, introduction, and ordering information.



FLOOD NOTE: BY GRAPHIC PLOTTING ONLY, THIS PROPERTY IS LOCATED IN ZONE 'X', AREA OF MINIMAL FLOOD HAZARD...

CES Civil Engineering Services logo and contact information: 7705 Spicer Farm Lane, Fairview, Tennessee 37062.

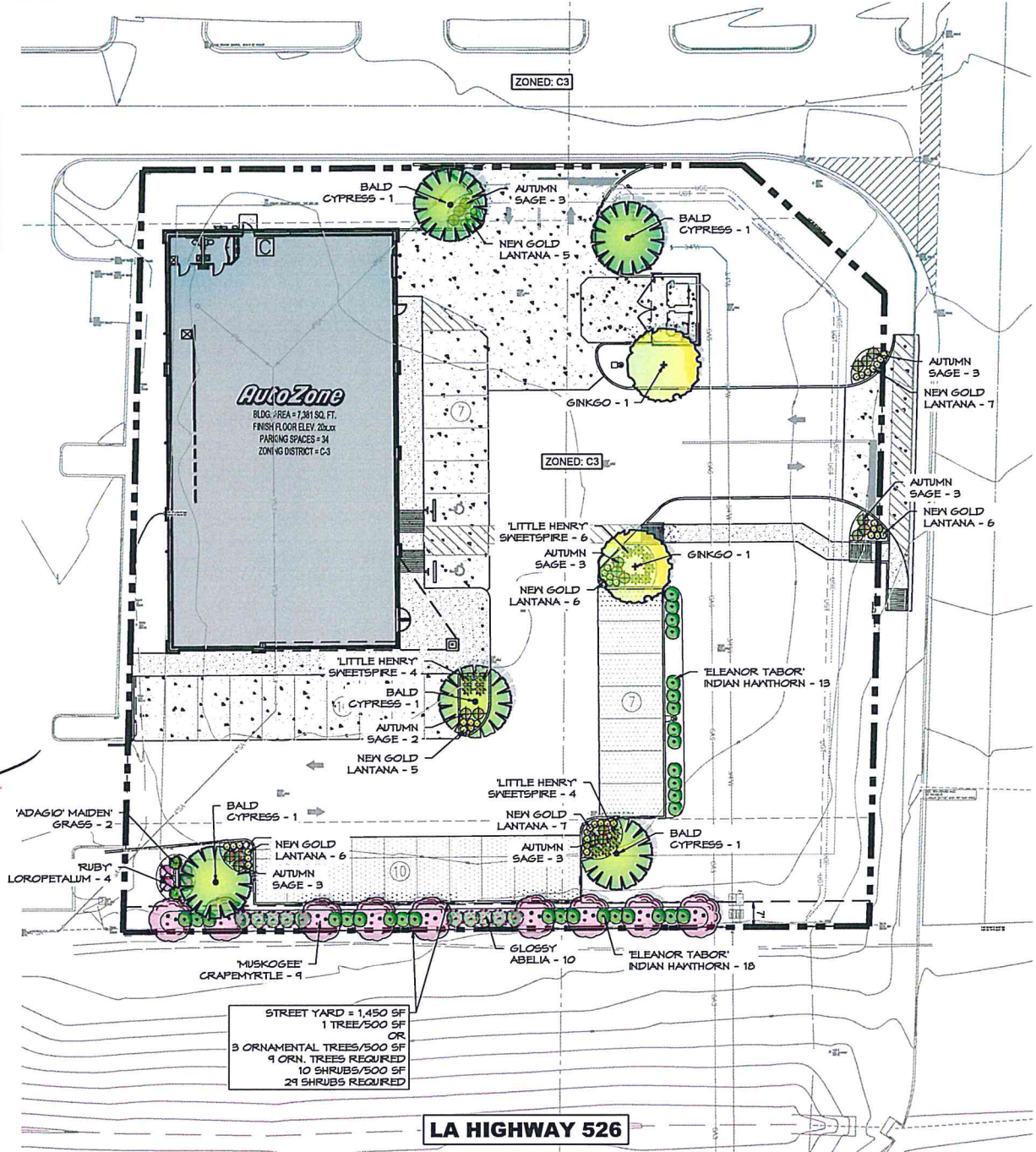
© COPYRIGHT 2007

LANDSCAPE CALCULATIONS		
SITE AREA:	42,932 SF	(0.99 AC)
ZONING:	REQUIRED	PROVIDED
	C-3	C-3
SHADE TREE PLANTING:		
C-3 (2 TREES/ACRE)	2.0	4
INTERIOR PARKING AREA:	-	17,712 SF
PLANTING AREA: (MIN.)	10%	10.3%
PLANTING AREA: (SQ. FT.)	1,771 SF	1,830 SF
PARKING SPACES:	-	39
1 TREE / 10 SPACES:	3.9	4

ROOT BARRIER TO BE LOCATED WHERE TREES ARE CLOSER THAN 5' FROM A CURB (TYP.)

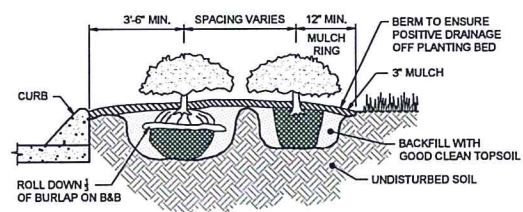
EXECUTIVE DIRECTOR APPROVAL

9-6-24
Date By *ACL*

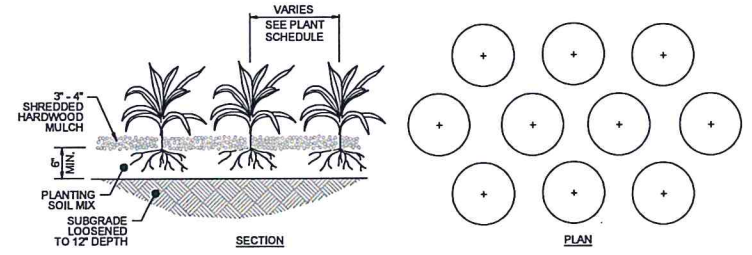


LANDSCAPE NOTES:

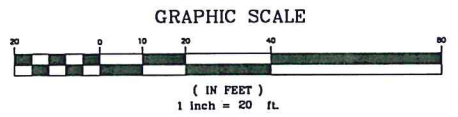
- WHEN APPLICABLE, IT IS THE CONTRACTOR'S RESPONSIBILITY TO PROTECT EXISTING TREES TO REMAIN. NO HEAVY EQUIPMENT SHOULD BE PERMITTED TO OPERATE OR BE STORED, NOR ANY MATERIALS TO BE HANDLED OR STORED, WITHIN THE DRIP LINES OF TREES OUTSIDE THE LIMIT OF GRADING.
- THE QUANTITIES INDICATED ON THE PLANT LIST AND PLAN ARE PROVIDED FOR THE BENEFIT OF THE CONTRACTOR. THE CONTRACTOR SHALL BE RESPONSIBLE FOR HIS OWN QUANTITY CALCULATIONS AND THE LIABILITY WHICH PERTAINS TO THOSE QUANTITIES AND TO ANY RELATED CONTRACT DOCUMENTS AND/OR PRICE QUOTATIONS. QUESTIONS SHOULD BE DIRECTED TO THE LANDSCAPE ARCHITECT.
- ALL PLANT MATERIALS SHALL BE NURSERY GROWN, GRADE "A" QUALITY, UNLESS OTHERWISE NOTED AND SHALL COMPLY WITH THE AMERICAN STANDARD FOR NURSERY STOCK: ANSI Z-60.1; LATEST EDITION, FOR SIZE AND QUALITY.
- NO SUBSTITUTIONS AS TO TYPE, SIZE, OR SPACING OF PLANT MATERIALS SPECIFIED ON THIS PLAN MAY BE MADE WITHOUT THE APPROVAL OF THE LANDSCAPE ARCHITECT. KITA LANDSCAPE DESIGN (615) 469-1222.
- THE CONTRACTOR IS TO VERIFY THE EXACT LOCATION OF ALL EXISTING UTILITIES AND TO PROTECT UTILITIES THAT ARE TO REMAIN. THE CONTRACTOR SHALL REPAIR ANY DAMAGE ACCORDING TO LOCAL STANDARDS AT THE CONTRACTOR'S EXPENSE. COORDINATE ALL CONSTRUCTION WITH THE APPROPRIATE UTILITY COMPANY.
- SOD ALL AREAS.
- SOIL USED FOR PLANTING SHALL CONSIST OF (5) PARTS TOPSOIL, (1) PART SAND AND (2) PARTS ORGANIC MATTER, MIXED WITH 1 POUND OF FERTILIZER PER CUBIC YARD.
A. SAND SHALL BE CLEAN MASONRY SAND.
B. ORGANIC MATTER SHALL BE PEAT MOSS, OR WELL COMPOSTED PINE BARK, OR APPROVED EQUAL AND SHALL BE FINELY GROUND AND FREE OF WEEDS.
C. ALL FERTILIZER SHALL BE 10-10-10 WITH MINOR ELEMENTS. FERTILIZER SHALL HAVE 40-50% OF ITS TOTAL NITROGEN IN A WATER INSOLUBLE FORM.
- PRE-EMERGENT HERBICIDE SHALL BE APPLIED TO ALL PLANT BEDS AND SOD AREAS PRIOR TO INSTALLATION. TREFLAN OR AN APPROVED EQUAL SHALL BE USED.
- ALL PLANT BEDS SHALL HAVE A MINIMUM OF 3" DEEP MULCH. MULCH SHALL BE SHREDDED HARDWOOD.
- IT IS THE LANDSCAPE CONTRACTOR'S RESPONSIBILITY TO CONFIRM MATERIAL QUANTITIES. IN THE EVENT OF A DISCREPANCY, THE QUANTITIES SHOWN ON THE PLAN SHALL TAKE PRECEDENCE OVER QUANTITIES SHOWN ON THE PLANT LIST.
- PRIOR TO FINAL PAYMENT, THE LANDSCAPE CONTRACTOR SHALL PROVIDE THE OWNER WITH COMPLETE WRITTEN INSTRUCTIONS ON PROPER CARE OF ALL SPECIFIED PLANT MATERIALS.
- THE LANDSCAPE INSTALLATION SHALL BE COORDINATED WITH THE IRRIGATION INSTALLATION WHEN APPLICABLE.
- THE LANDSCAPE CONTRACTOR SHALL MAINTAIN POSITIVE DRAINAGE AWAY FROM STRUCTURES AND TAKE SPECIAL CARE TO INSURE THAT BED PREPARATION DOES NOT INHIBIT DRAINAGE.
- ALL LAWN AREAS SHALL BE CULTIVATED TO A DEPTH OF 4" PRIOR TO SODDING AND SEEDING. PREPARED TURF BEDS SHALL BE FREE FROM STONES OVER 2" DIAMETER, WEEDS AND OTHER DELETERIOUS MATERIAL.
- THE LANDSCAPE CONTRACTOR SHALL RAKE SMOOTH ALL SEED OR SOD AREAS PRIOR TO INSTALLATION.
- THE CONTRACTOR SHALL BE RESPONSIBLE FOR BACKFILLING BEHIND THE CURB SO GRADE IS LEVEL WITH TOP OF CURB.
- SODDED AREAS SHALL HAVE NO BARE AREAS. SEEDED AREAS SHALL BE CONSIDERED ACCEPTABLE WHEN FULL COVERAGE OF THE PERMANENT TURF GRASS SPECIES IS ESTABLISHED.
- CUT AWAY ROPES OR WIRES FROM B&B PLANTS. PULL BACK BURLAP FROM TOP OF ROOT BALL. DO NOT ALLOW BURLAP TO BE EXPOSED AT SURFACE. TOTALLY REMOVE BURLAP IF IT IS SYNTHETIC.
- IF CONTAINER GROWN PLANTS SHOW SIGNS OF BEING ROOT BOUND, SCORE ROOTS VERTICALLY.
- ALL PLANT MATERIAL SHALL BE GUARANTEED FOR ONE YEAR FROM DATE OF FINAL ACCEPTANCE.
- ALL REPLACEMENTS SHALL BE OF THE SAME TYPE, SIZE, AND QUALITY AS SPECIFIED ON THE PLANT LIST, UNLESS APPROVED OTHERWISE IN WRITING BY THE LANDSCAPE ARCHITECT.
- ANY MATERIAL THAT IS DEEMED TO BE 25% DEAD OR MORE SHALL BE CONSIDERED DEAD, AND MUST BE REPLACED AT NO CHARGE. A TREE IS CONSIDERED DEAD WHEN THE MAIN LEADER HAS DIED BACK, OR MORE THAN 25% OF THE CROWN IS DEAD.
- REPLACEMENTS SHALL BE MADE DURING THE NEXT PLANTING SEASON UNLESS THE LANDSCAPE CONTRACTOR AGREES TO AN EARLIER DATE.
PLANTING DATES
SPRING: MARCH 15 - APRIL 15
FALL: OCTOBER 1 - NOVEMBER 30
- THE LANDSCAPE CONTRACTOR WILL NOT BE RESPONSIBLE FOR PLANT MATERIAL THAT HAS BEEN DAMAGED BY VANDALISM, FIRE, RELOCATION, WILDLIFE, THEFT, OR OTHER ACTIVITIES BEYOND THE LANDSCAPE CONTRACTOR'S CONTROL.



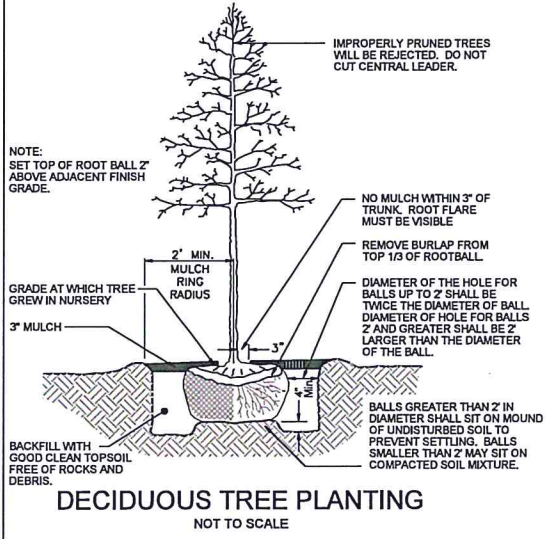
SHRUB / GROUND COVER PLANTING
NOT TO SCALE



GROUND COVER / PERENNIAL PLANTING
NOT TO SCALE



CES Civil Engineering Services
7705 Spicer Farm Lane
Fairview, Tennessee 37062
phone: (615) 533-0401
fax: (615) 523-8865
e-mail: ray@civilengineering.com



PLANT SCHEDULE					
QTY.	COMMON NAME	BOTANICAL NAME	HEIGHT	TRUNK	COMMENTS
CANOPY TREES					
5	Bald Cypress	<i>Taxodium distichum</i>	12' - 14'	3" Cal.	B&B, MALE ONLY
2	Ginkgo	<i>Ginkgo biloba</i>	12' - 14'	3" Cal.	B&B
7	TOTAL - CANOPY TREES				
UNDERSTORY/COLUMNAR TREES					
9	'Muskogee' Crapemyrtle	<i>Lagerstroemia indica x fauriei</i> 'Muskogee'	6' - 7'	2" Cal.	Multi-Trunk, Min. (3) 1" canes
9	TOTAL - UNDERSTORY TREES				
18	TOTAL - ALL TREES				
SHRUBS					
20	Autumn Sage	<i>Salvia greggii</i>	18" Min.	3 Gal.	Container
31	'Eleanor Tabor' Indian Hawthorn	<i>Rhaphirolepis indica</i> 'Conor'	18" Min.	3 Gal.	Container
10	Glossy Abelia	<i>Abelia grandiflora</i>	18" Min.	3 Gal.	Container
14	'Little Henry' Virginia Sweetspire	<i>Itea virginica</i> 'Little Henry'	18" Min.	3 Gal.	Container
4	'Ruby' Loropetalum	<i>Loropetalum chinense</i> 'Ruby'	36" Min.		Container
79	TOTAL - SHRUBS				
GRASSES, PERENNIALS AND GROUND COVER					
2	'Adagio' Maiden Grass	<i>Miscanthus sinensis</i> 'Adagio'	24"	3 Gal.	Container
44	'New Gok' Lantana	<i>Lantana x 'New Gold'</i>	1 Gal.	1 Gal.	Container
TURF					
-	Bermuda Seed/Sod	<i>Cynodon dactylon</i>			

FLOOD HAZARD: BY GRAPHIC PLOTTING ONLY, THIS PROPERTY IS LOCATED IN ZONE "X", AREA OF MINIMAL FLOOD HAZARD. OF THE FLOOD INSURANCE RATE MAP, COMMUNITY PANEL NO. 22017C0488H, WHICH BEARS AN EFFECTIVE DATE OF MAY 19, 2014. THIS PROPERTY IS NOT IN SPECIAL FLOOD HAZARD ZONE.



NAD83 MS STATE PLANE

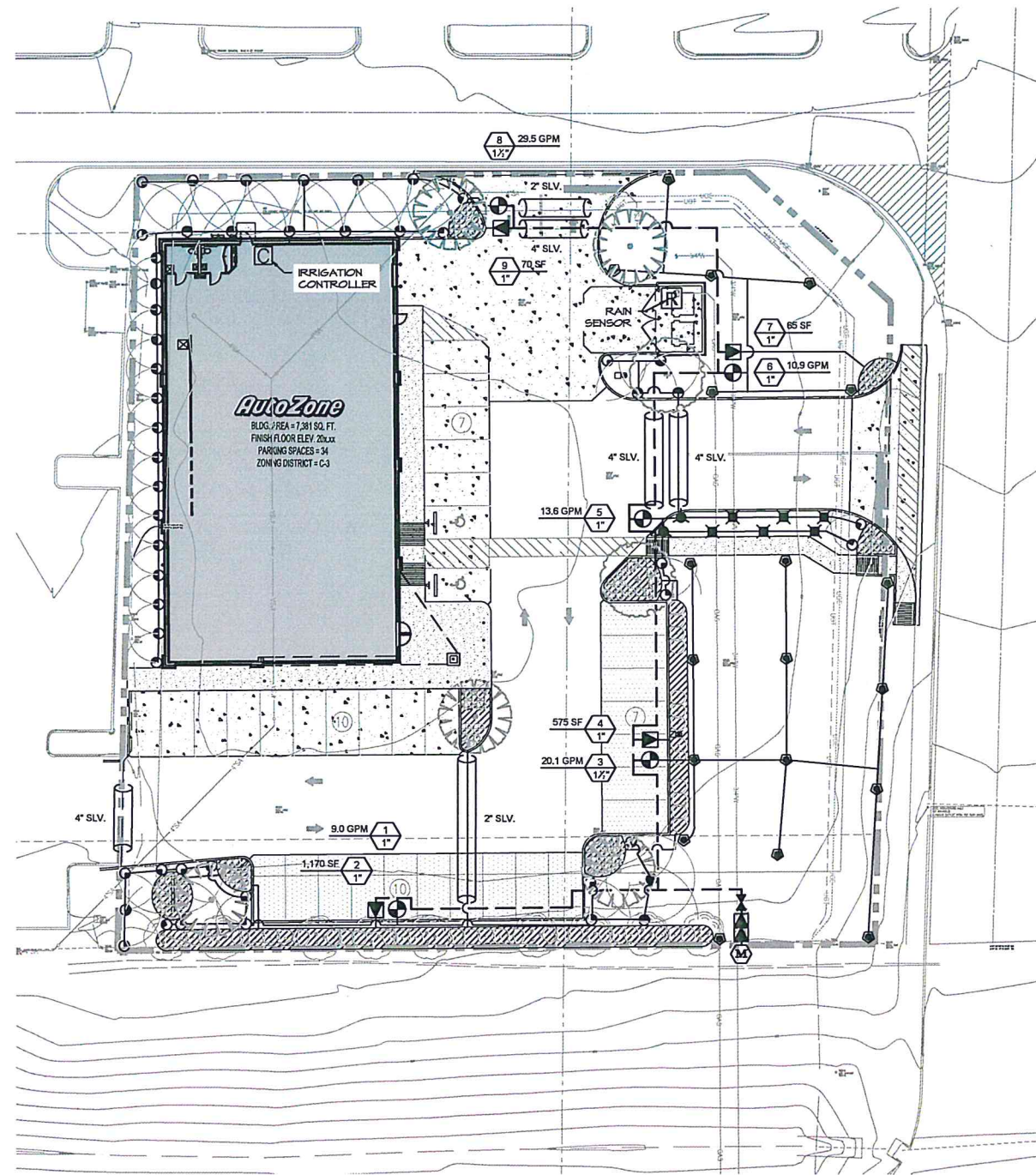
REVISIONS	1	2	3	4	5	6

AutoZone Store No. 5071
HWY 525 AND INTERSTATE 49
SHREVEPORT LA 70592
LANDSCAPE PLAN

Owner / Developer: AUTOZONE STORES LLC
123 South Front Street, 3rd Floor
Memphis, Tennessee 38103
TEL: (901) 495-8994 FAX: (901) 495-8969
For Bidding & Contractor Information Contact:
Dodge Data & Analytics, Tel. 413-930-4215
Cindy.searcy@construction.com

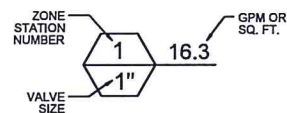
04/02/2024
7N2
L-1.1

© COPYRIGHT 2007



LA HIGHWAY 526

THIS SYSTEM WAS DESIGNED USING RAIBIRD HEADS AND ROTORS. UTILIZING ANOTHER TYPE OF IRRIGATION SYSTEM MAY REQUIRE A REDESIGN OR LESS THAN OPTIMUM COVERAGE. IRRIGATION DESIGNER ASSUMES NO LIABILITY IF THE SYSTEM DOES NOT FUNCTION PROPERLY DUE TO SUBSTITUTION OF IRRIGATION SYSTEMS.



IRRIGATION LINES ARE TO BE PLACED INSIDE THE PROPERTY LINE EXCEPT AS NOTED.
MAINLINE TO BE LOCATED AT BACK OF CURB WHENEVER POSSIBLE.
MAINLINE SHOWN IS DIAGRAMMATIC FOR CLARITY. ALL MAINLINE AND VALVES SHALL BE FIELD LOCATED OUTSIDE OF HARDSCAPE AND FENCES.
WHERE IRRIGATION MAINLINE/LATERAL LINES CROSS HARDSCAPE THERE SHALL BE A SLEEVE 2 SIZES BIGGER. NOT ALL SLEEVES ARE SHOWN FOR CLARITY REASONS.

IRRIGATION NOTES & LEGENDS

HEADS

- 1. ALL POP-UP IRRIGATION HEADS DESIGNED ADJACENT TO CURBS OR PAVEMENT SHALL BE INSTALLED WITH A CLEARANCE OF 1 1/2" FROM THE EDGES OF ALL PAVED AREAS TO PROVIDE FOR EDGING AND MAINTENANCE OPERATIONS. HEADS INSTALLED ON SHRUB RISERS OR WITH THE TOP OF THE HEAD MORE THAN 1/2" ABOVE GRADE SHALL BE INSTALLED WITH A MINIMUM 6" CLEARANCE FROM PAVED AREAS.
2. ALL THREADED PIPE CONNECTIONS SHALL BE ASSEMBLED USING TEFLON THREAD SEALING TAPE.
3. ALL HEADS MOUNTED IN THE LAWN AREAS SHALL BE MOUNTED ON POLYETHYLENE PIPE FLEX SHIMS JOINTS COMPOSED OF MODEL #SD1245-010 5/8" I.D. POLY PIPE FITTED WITH #2-300-R (5/8" INSERT BY 1/2" H.P.T.) AND/OR #2-150-R (5/8" INSERT BY 3/4" H.P.T.) ELBOYS.

PIPE

--- DENOTES ROUTE OF PR 200 PVC LATERAL PIPING. SIZE OF LATERAL PIPING SHALL BE AS NOTED BELOW. MINIMUM DEPTH OF COVER OVER LATERAL PIPING TO BE 12".
LATERAL PIPING SIZING SCHEDULE:
SUMMATION OF GALLONAGE DEMAND ON THE PARTICULAR BRANCHES OF PIPE WITHIN A CONTROL SECTION SHALL BE DETERMINED BY USING THE GPM FOR A NOZZLE BASED ON A 40 PSI HEAD PRESSURE AND FULL RADII AT THAT PRESSURE AS REPORTED IN THE RAIBIRD 2015 IRRIGATION PRODUCTS CATALOG. PIPE SIZES FOR THE LATERALS SHALL BE AS FOLLOWS:
ZERO TO FIFTEEN GPM ACCUMULATED FLOW USE 1" PR 200 PVC PIPE
GREATER THAN FIFTEEN UP TO THIRTY-FIVE GPM USE 1-1/2" PIPE
FRICITION LOSS ALLOWANCES FOR THIS PROJECT HAVE BEEN DETERMINED USING THE ABOVE FLOW RANGES AND DEMANDS.
--- DENOTES ROUTE OF PR 200 MAIN LINE PIPING. SIZE OF MAINLINE PIPE TO BE 2". MINIMUM DEPTH OF COVER OVER MAINLINE PIPING TO BE 18".

LATERAL PIPING SIZING SCHEDULE:

SUMMATION OF GALLONAGE DEMAND ON THE PARTICULAR BRANCHES OF PIPE WITHIN A CONTROL SECTION SHALL BE DETERMINED BY USING THE GPM FOR A NOZZLE BASED ON A 40 PSI HEAD PRESSURE AND FULL RADII AT THAT PRESSURE AS REPORTED IN THE RAIBIRD 2015 IRRIGATION PRODUCTS CATALOG. PIPE SIZES FOR THE LATERALS SHALL BE AS FOLLOWS:
ZERO TO FIFTEEN GPM ACCUMULATED FLOW USE 1" PR 200 PVC PIPE
GREATER THAN FIFTEEN UP TO THIRTY-FIVE GPM USE 1-1/2" PIPE
FRICITION LOSS ALLOWANCES FOR THIS PROJECT HAVE BEEN DETERMINED USING THE ABOVE FLOW RANGES AND DEMANDS.
--- DENOTES ROUTE OF PR 200 MAIN LINE PIPING. SIZE OF MAINLINE PIPE TO BE 2". MINIMUM DEPTH OF COVER OVER MAINLINE PIPING TO BE 18".

--- DENOTES ROUTE OF PR 200 MAIN LINE PIPING. SIZE OF MAINLINE PIPE TO BE 2". MINIMUM DEPTH OF COVER OVER MAINLINE PIPING TO BE 18".

--- DENOTES ROUTE OF PR 200 MAIN LINE PIPING. SIZE OF MAINLINE PIPE TO BE 2". MINIMUM DEPTH OF COVER OVER MAINLINE PIPING TO BE 18".

1. PIPING SHALL BE PR 200 SOLVENT WELD PVC PIPE WITH SCHEDULE 40 PVC - SOLVENT WELD FITTINGS UNLESS OTHERWISE NOTED.
2. ALL PIPING RUNS SHALL BE "SNAKED" IN THE TRENCH DURING INSTALLATION TO PREVENT EXCESSIVE STRAIN DUE TO THERMAL EXPANSION OR CONTRACTION.
3. THE CONTRACTOR SHALL TAKE ALL PRECAUTIONS NECESSARY TO AVOID DAMAGING PLANTINGS (INCLUDING ROOTS) DURING INSTALLATION OF THE IRRIGATION SYSTEM AND SHALL COORDINATE HIS EFFORTS WITH THE LANDSCAPER AND LANDSCAPE ARCHITECT SO AS TO OPTIMIZE THE EFFICIENCY AND THE AESTHETIC QUALITY OF THE INSTALLATION.

5. THE CONTRACTOR SHALL TAKE ALL PRECAUTIONS NECESSARY TO AVOID DAMAGING PLANTINGS (INCLUDING ROOTS) DURING INSTALLATION OF THE IRRIGATION SYSTEM AND SHALL COORDINATE HIS EFFORTS WITH THE LANDSCAPER AND LANDSCAPE ARCHITECT SO AS TO OPTIMIZE THE EFFICIENCY AND THE AESTHETIC QUALITY OF THE INSTALLATION.

24 VAC CONTROL WIRING

1. ALL 24 V.A.C. CONTROL WIRING SHALL BE TWO WIRE WITH POLYETHYLENE PE DIRECT BURIAL INSULATION RATED FOR 500 V.A.C. VALVE "COMMON" WIRES SHALL HAVE WHITE INSULATION WHILE VALVE "HOT" WIRES SHALL HAVE INSULATION RED IN COLOR. THE "COMMON" WIRES SHALL BE #14 AWG. "HOT" WIRES SHALL BE #16 AWG. VALVE WIRES SHALL FOLLOW MAINLINE PIPING WHERE FEASIBLE AND SHALL BE LAID IN A COMMON TRENCHLINE WITH THE MAINLINE PIPING AND IN THE BOTTOM OF THE TRENCH. WIRES SHALL BE "SNAKED" AND TAPERED AT INTERVALS OF APPROXIMATELY TEN FEET. ALL WIRING SHALL BE INSTALLED IN ACCORDANCE WITH LOCAL CODE REQUIREMENTS.
2. WIRE SPLICES SHALL BE KEPT TO AN ABSOLUTE MINIMUM. WHERE MAJOR CONCENTRATIONS OF SPLICES ARE NECESSARY SAID SPLICES SHALL BE PLACED IN A CARSON #101-1 VALVE BOX WITH #10-2 COVER INSTALLED AT GRADE LEVEL. SPLICES AT VALVE LOCATIONS SHALL BE MADE INSIDE OF THE VALVE BOX. ALL SPLICE LOCATIONS SHALL BE NOTED ON THE AS BUILT PLAN.
3. WIRE RUNS SHALL BE INSTALLED WITH ENOUGH SLACK AND/OR OCCASIONAL EXPANSION LOOPS TO PREVENT EXCESSIVE STRAIN DUE TO THERMAL CONTRACTION.
4. ALL WIRE SPLICES SHALL BE MADE USING UL APPROVED DIRECT BURIAL CONNECTORS AND WATERPROOFING MATERIALS. ALL ELECTRICAL WORK SHALL BE INSTALLED ACCORDING TO CODE.

5. WIRE RUNS SHALL BE INSTALLED WITH ENOUGH SLACK AND/OR OCCASIONAL EXPANSION LOOPS TO PREVENT EXCESSIVE STRAIN DUE TO THERMAL CONTRACTION.
4. ALL WIRE SPLICES SHALL BE MADE USING UL APPROVED DIRECT BURIAL CONNECTORS AND WATERPROOFING MATERIALS. ALL ELECTRICAL WORK SHALL BE INSTALLED ACCORDING TO CODE.

5. WIRE RUNS SHALL BE INSTALLED WITH ENOUGH SLACK AND/OR OCCASIONAL EXPANSION LOOPS TO PREVENT EXCESSIVE STRAIN DUE TO THERMAL CONTRACTION.
4. ALL WIRE SPLICES SHALL BE MADE USING UL APPROVED DIRECT BURIAL CONNECTORS AND WATERPROOFING MATERIALS. ALL ELECTRICAL WORK SHALL BE INSTALLED ACCORDING TO CODE.

4. ALL WIRE SPLICES SHALL BE MADE USING UL APPROVED DIRECT BURIAL CONNECTORS AND WATERPROOFING MATERIALS. ALL ELECTRICAL WORK SHALL BE INSTALLED ACCORDING TO CODE.

4. ALL WIRE SPLICES SHALL BE MADE USING UL APPROVED DIRECT BURIAL CONNECTORS AND WATERPROOFING MATERIALS. ALL ELECTRICAL WORK SHALL BE INSTALLED ACCORDING TO CODE.

4. ALL WIRE SPLICES SHALL BE MADE USING UL APPROVED DIRECT BURIAL CONNECTORS AND WATERPROOFING MATERIALS. ALL ELECTRICAL WORK SHALL BE INSTALLED ACCORDING TO CODE.

4. ALL WIRE SPLICES SHALL BE MADE USING UL APPROVED DIRECT BURIAL CONNECTORS AND WATERPROOFING MATERIALS. ALL ELECTRICAL WORK SHALL BE INSTALLED ACCORDING TO CODE.

4. ALL WIRE SPLICES SHALL BE MADE USING UL APPROVED DIRECT BURIAL CONNECTORS AND WATERPROOFING MATERIALS. ALL ELECTRICAL WORK SHALL BE INSTALLED ACCORDING TO CODE.

4. ALL WIRE SPLICES SHALL BE MADE USING UL APPROVED DIRECT BURIAL CONNECTORS AND WATERPROOFING MATERIALS. ALL ELECTRICAL WORK SHALL BE INSTALLED ACCORDING TO CODE.

4. ALL WIRE SPLICES SHALL BE MADE USING UL APPROVED DIRECT BURIAL CONNECTORS AND WATERPROOFING MATERIALS. ALL ELECTRICAL WORK SHALL BE INSTALLED ACCORDING TO CODE.

4. ALL WIRE SPLICES SHALL BE MADE USING UL APPROVED DIRECT BURIAL CONNECTORS AND WATERPROOFING MATERIALS. ALL ELECTRICAL WORK SHALL BE INSTALLED ACCORDING TO CODE.

4. ALL WIRE SPLICES SHALL BE MADE USING UL APPROVED DIRECT BURIAL CONNECTORS AND WATERPROOFING MATERIALS. ALL ELECTRICAL WORK SHALL BE INSTALLED ACCORDING TO CODE.

4. ALL WIRE SPLICES SHALL BE MADE USING UL APPROVED DIRECT BURIAL CONNECTORS AND WATERPROOFING MATERIALS. ALL ELECTRICAL WORK SHALL BE INSTALLED ACCORDING TO CODE.

HEAD RADII

- 1. THE IRRIGATION CONTRACTOR SHALL ADJUST THE RADIUS AND THROW OF EACH SPRINKLER HEAD TO PROVIDE OPTIMUM COVERAGE WHILE MINIMIZING OVERSPRAY ONTO HARDSCAPES OR BUILDINGS. ADJUST HEADS TO ELIMINATE DRY SPOTS.
2. APPROXIMATE ARC AND RADII OF INDIVIDUAL SPRINKLER HEAD COVERAGE SHALL BE AS ILLUSTRATED. INDIVIDUAL HEAD OR NOZZLE MODEL NUMBERS MAY BE DEPENDENT UPON THESE SPECIFIC CHARACTERISTICS.

VALVES

- 1. LOCATION OF ELECTRIC 24 V.A.C. REMOTE CONTROL VALVE WITH FLOW CONTROL FEATURE (RAIBIRD PSA SERIES). SIZE OF ZONE CONTROL VALVES TO BE NOTED ON THE IRRIGATION PLANS.
2. DENOTES LOCATION OF MAINLINE ISOLATION GATE VALVE. THE ISOLATION VALVE SHALL BE LINE SIZE AND SHALL BE INSTALLED WITH A VALVE BOX ASSEMBLY, NIBCO MODEL T18-1/2.

ALL IN-LINE REMOTE CONTROL VALVES SHALL BE INSTALLED IN CARSON VALVE BOXES WITH LIDS MOUNTED AT GRADE LEVEL. SINGLE VALVES MAY BE INSTALLED IN CARSON MODEL #101-1 VALVE BOX WITH #10-2 COVER, WHILE MULTIPLE VALVES (UP TO, TWO 1" VALVES OR ONE 1-1/2") SHALL BE INSTALLED IN CARSON MODEL #1414-1 BOX WITH #1414-2 COVER.

DRIP IRRIGATION

- 1. DENOTES LOCATION OF RAIBIRD XFS SERIES 1/2" EMITTER SPACING INTERVALS AT 1 GPM EMITTERS IN-LINE. TUBING TO BE INSTALLED UNDER MULCH IN LANDSCAPED AREAS AS SHOWN ON THE IRRIGATION DRAWINGS.
2. DENOTES LOCATION OF RAIBIRD XFS SERIES 1/2" EMITTER SPACING INTERVALS AT 1 GPM EMITTERS IN-LINE. TUBING TO BE INSTALLED UNDER TURF AREAS AS SHOWN ON THE IRRIGATION DRAWINGS.

THE DRIP SHALL BE APPLIED AS FOLLOWS: FOR TREES, CONTRACTOR SHALL USE BLANK TUBING WITH FOUR (4) 1 GPM POINT SOURCE DRIPPERS PER TREE.
FOR SHRUBS, CONTRACTOR SHALL USE BLANK TUBING WITH ONE (1) GPM POINT SOURCE DRIPPER PER SHRUB.

FOR SHRUBS, CONTRACTOR SHALL USE BLANK TUBING WITH ONE (1) GPM POINT SOURCE DRIPPER PER SHRUB.

FOR GROUNDCOVER, 1/2" P.E. TUBING, 12" EMITTER SPACING INTERVALS AT 1 GPM EMITTERS IN-LINE SHALL BE USED (RAIBIRD XFS-04-12 SERIES).
DENOTES LOCATION OF DRIP VALVE ASSEMBLY WHICH INCLUDES WITH RAIBIRD XGZ-013-PR1 (CONTROL ZONE KIT). FLOW CONTROL VALVES SHALL BE AS NOTED ON THE LAYOUT. ALL VALVES SHALL BE INSTALLED IN RAIBIRD VALVE BOXES (V8-STD) WITH LIDS MOUNTED AT GRADE LEVEL.

CONTROLLER

1. DENOTES THE LOCATION OF THE IRRIGATION CONTROLLER. THE CONTROLLER SHALL BE THE RAIBIRD ESP-LX4E SERIES. ATTACH RAIBIRD RAIN SENSOR (#R2-RFC) PER MANUFACTURERS INSTRUCTIONS. THE CONTROLLER SHALL INCORPORATE 24 V.A.C. ELECTRIC REMOTE CONTROL VALVE OPERATION. THE CONTROLLER SHALL BE MOUNTED IN THE APPROXIMATE LOCATION SHOWN ON THE PLAN.
2. LOCATION OF WIRELESS RAIN SENSOR

1. DENOTES THE LOCATION OF THE IRRIGATION CONTROLLER. THE CONTROLLER SHALL BE THE RAIBIRD ESP-LX4E SERIES. ATTACH RAIBIRD RAIN SENSOR (#R2-RFC) PER MANUFACTURERS INSTRUCTIONS. THE CONTROLLER SHALL INCORPORATE 24 V.A.C. ELECTRIC REMOTE CONTROL VALVE OPERATION. THE CONTROLLER SHALL BE MOUNTED IN THE APPROXIMATE LOCATION SHOWN ON THE PLAN.
2. LOCATION OF WIRELESS RAIN SENSOR

1. DENOTES THE LOCATION OF THE IRRIGATION CONTROLLER. THE CONTROLLER SHALL BE THE RAIBIRD ESP-LX4E SERIES. ATTACH RAIBIRD RAIN SENSOR (#R2-RFC) PER MANUFACTURERS INSTRUCTIONS. THE CONTROLLER SHALL INCORPORATE 24 V.A.C. ELECTRIC REMOTE CONTROL VALVE OPERATION. THE CONTROLLER SHALL BE MOUNTED IN THE APPROXIMATE LOCATION SHOWN ON THE PLAN.
2. LOCATION OF WIRELESS RAIN SENSOR

1. DENOTES THE LOCATION OF THE IRRIGATION CONTROLLER. THE CONTROLLER SHALL BE THE RAIBIRD ESP-LX4E SERIES. ATTACH RAIBIRD RAIN SENSOR (#R2-RFC) PER MANUFACTURERS INSTRUCTIONS. THE CONTROLLER SHALL INCORPORATE 24 V.A.C. ELECTRIC REMOTE CONTROL VALVE OPERATION. THE CONTROLLER SHALL BE MOUNTED IN THE APPROXIMATE LOCATION SHOWN ON THE PLAN.
2. LOCATION OF WIRELESS RAIN SENSOR

1. DENOTES THE LOCATION OF THE IRRIGATION CONTROLLER. THE CONTROLLER SHALL BE THE RAIBIRD ESP-LX4E SERIES. ATTACH RAIBIRD RAIN SENSOR (#R2-RFC) PER MANUFACTURERS INSTRUCTIONS. THE CONTROLLER SHALL INCORPORATE 24 V.A.C. ELECTRIC REMOTE CONTROL VALVE OPERATION. THE CONTROLLER SHALL BE MOUNTED IN THE APPROXIMATE LOCATION SHOWN ON THE PLAN.
2. LOCATION OF WIRELESS RAIN SENSOR

SLEEVING

1. DENOTES LOCATION OF PROPOSED PVC SLEEVES FOR IRRIGATION PIPING. SIZE OF SLEEVES TO BE AS NOTED.
WHERE WIRE RUNS OCCUR, A SEPARATE PVC ELECTRICAL CONDUIT SLEEVE SHALL BE USED FOR 24 VAC WIRING PER ELECTRICAL CODE. SIZE OF PVC WIRE SLEEVES TO BE AS NOTED ON LAYOUT.

WHERE IRRIGATION PIPING CROSSES SIDEWALKS, THE CONTRACTOR SHALL BE RESPONSIBLE FOR PLACING A SLEEVE 2 SIZES LARGER THAN THE PIPE THAT IS CROSSING. MINIMUM SLEEVE SIZE IS 2".

THE IRRIGATION CONTRACTOR SHALL COORDINATE THE INSTALLATION OF THE IRRIGATION SYSTEM WITH THE LANDSCAPE CONTRACTOR TO INSURE PROPER INSTALLATION OF BOTH THE IRRIGATION SYSTEM WITH THE LANDSCAPE AND HARDSCAPE.

NOTE: THE IRRIGATION SYSTEM IS DISPLAYED SCHEMATIC IN NATURE. THE IRRIGATION CONTRACTOR MAY BE REQUIRED TO MAKE MINOR ADJUSTMENTS IN THE FIELD. THESE MINOR ADJUSTMENTS SHALL BE MADE AT NO ADDITIONAL COST TO THE OWNER BUT SHALL BE MADE ONLY AFTER NOTIFICATION IS MADE TO THE OWNER OR HIS REPRESENTATIVE.

THE CONTRACTOR SHALL FAMILIARIZE HIMSELF WITH THE SITE SO THAT HE IS AWARE OF ANY SPECIAL CONDITIONS WHICH EXIST THAT MAY AFFECT HIS BID PROPOSAL AND SHALL THEREAFTER BE RESPONSIBLE FOR ALL COSTS INCURRED BY HIMSELF IN RELATION TO THE INSTALLATION.

THE CONTRACTOR SHALL FAMILIARIZE HIMSELF WITH THE SITE SO THAT HE IS AWARE OF ANY SPECIAL CONDITIONS WHICH EXIST THAT MAY AFFECT HIS BID PROPOSAL AND SHALL THEREAFTER BE RESPONSIBLE FOR ALL COSTS INCURRED BY HIMSELF IN RELATION TO THE INSTALLATION.

THE CONTRACTOR SHALL FAMILIARIZE HIMSELF WITH THE SITE SO THAT HE IS AWARE OF ANY SPECIAL CONDITIONS WHICH EXIST THAT MAY AFFECT HIS BID PROPOSAL AND SHALL THEREAFTER BE RESPONSIBLE FOR ALL COSTS INCURRED BY HIMSELF IN RELATION TO THE INSTALLATION.

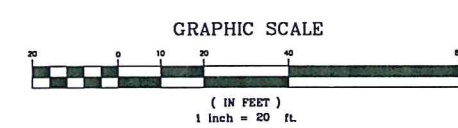
THE CONTRACTOR SHALL FAMILIARIZE HIMSELF WITH THE SITE SO THAT HE IS AWARE OF ANY SPECIAL CONDITIONS WHICH EXIST THAT MAY AFFECT HIS BID PROPOSAL AND SHALL THEREAFTER BE RESPONSIBLE FOR ALL COSTS INCURRED BY HIMSELF IN RELATION TO THE INSTALLATION.

THE CONTRACTOR SHALL FAMILIARIZE HIMSELF WITH THE SITE SO THAT HE IS AWARE OF ANY SPECIAL CONDITIONS WHICH EXIST THAT MAY AFFECT HIS BID PROPOSAL AND SHALL THEREAFTER BE RESPONSIBLE FOR ALL COSTS INCURRED BY HIMSELF IN RELATION TO THE INSTALLATION.

THE CONTRACTOR SHALL FAMILIARIZE HIMSELF WITH THE SITE SO THAT HE IS AWARE OF ANY SPECIAL CONDITIONS WHICH EXIST THAT MAY AFFECT HIS BID PROPOSAL AND SHALL THEREAFTER BE RESPONSIBLE FOR ALL COSTS INCURRED BY HIMSELF IN RELATION TO THE INSTALLATION.

THE CONTRACTOR SHALL FAMILIARIZE HIMSELF WITH THE SITE SO THAT HE IS AWARE OF ANY SPECIAL CONDITIONS WHICH EXIST THAT MAY AFFECT HIS BID PROPOSAL AND SHALL THEREAFTER BE RESPONSIBLE FOR ALL COSTS INCURRED BY HIMSELF IN RELATION TO THE INSTALLATION.

THE CONTRACTOR SHALL FAMILIARIZE HIMSELF WITH THE SITE SO THAT HE IS AWARE OF ANY SPECIAL CONDITIONS WHICH EXIST THAT MAY AFFECT HIS BID PROPOSAL AND SHALL THEREAFTER BE RESPONSIBLE FOR ALL COSTS INCURRED BY HIMSELF IN RELATION TO THE INSTALLATION.

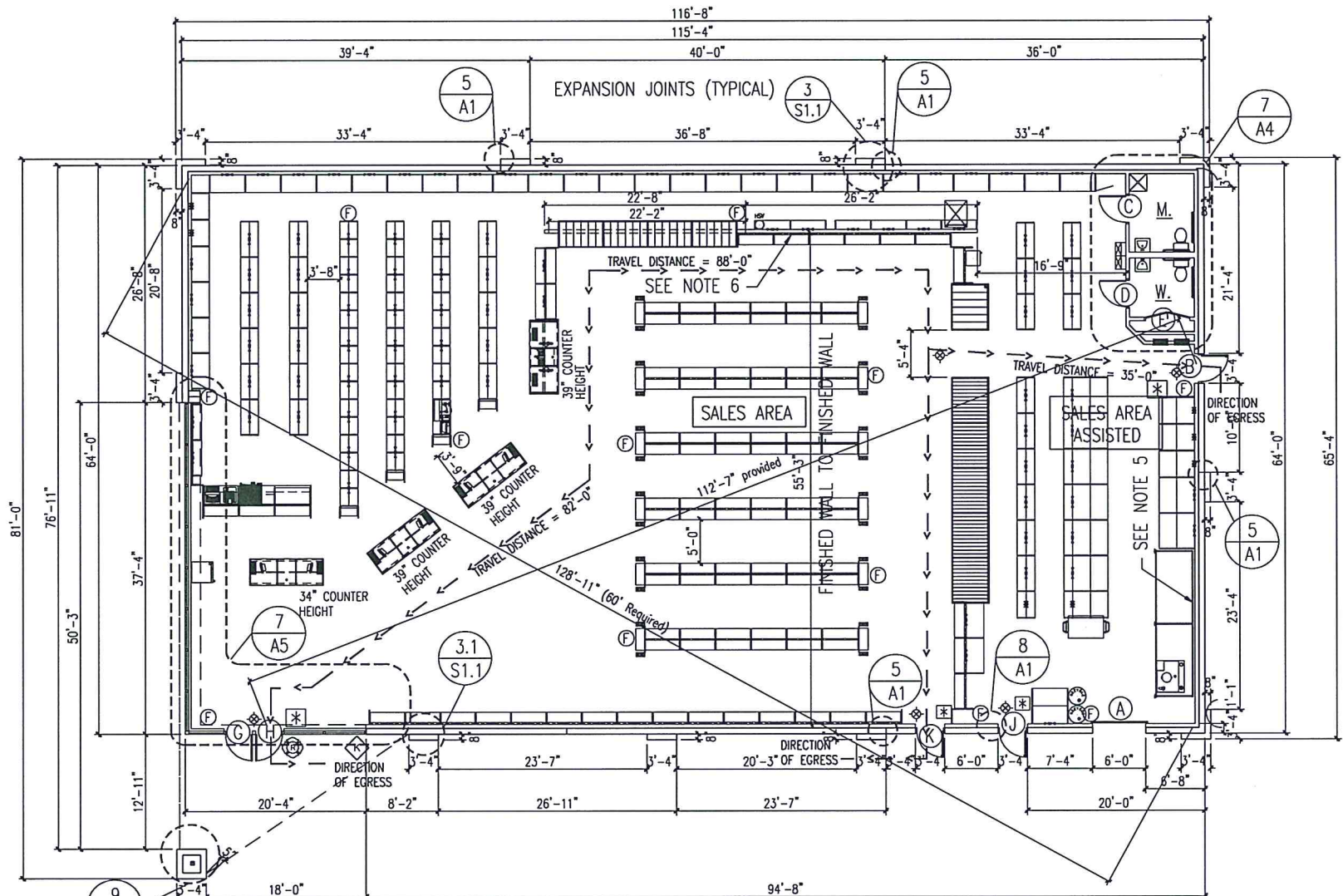


CES Civil Engineering Services
7705 Spicer Farm Lane phone: (615) 533-0401
Fairview, Tennessee fax: (615) 523-8865
37062 e-mail: ray@civilengineering.com
Engineering, Environmental, Land Planning

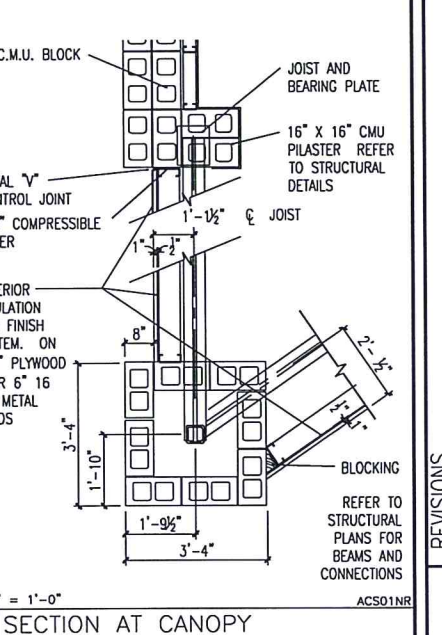
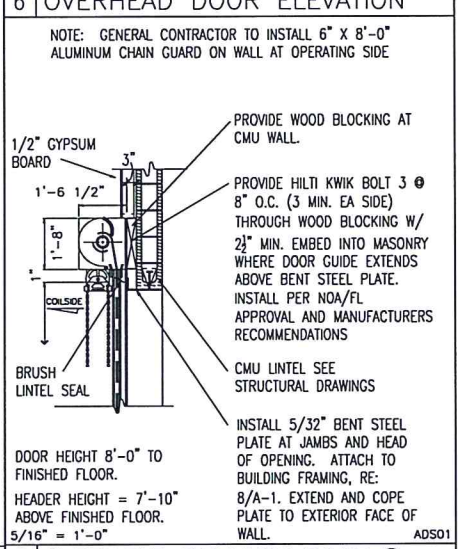
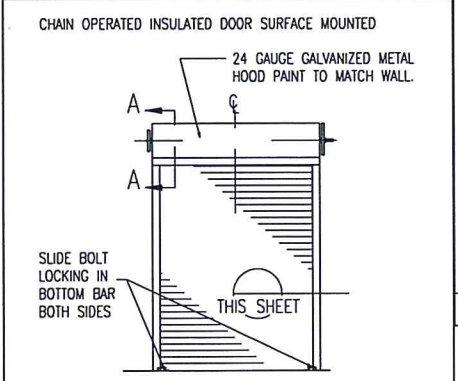
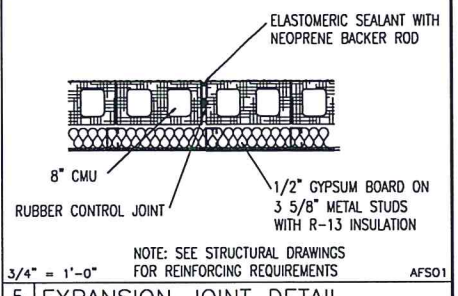
EXECUTIVE DIRECTOR APPROVAL
9-6-24 [Signature]
Date By

NAD83 MS STATE PLANE
REVISONS
4 5 6
1 2 3
AutoZone Store No. 5071
HWY 525 AND INTERSTATE 49
SHREVEPORT LA 70592
IRRIGATION PLAN
Owner / Developer: AUTOZONE STORES LLC
123 South Front Street, 3rd Floor
Memphis, Tennessee 38103
TEL: (901) 495-8994 FAX: (901) 495-8969
For Bidding & Contractor Information Contact:
Douge Data & Analytics, Tel: 413-930-4215
Cindy.searcy@construction.com
04/02/2024
7N2
L-1.2

© COPYRIGHT 2007



- LEGEND**
- (F) 2A 10BC FIRE EXTINGUISHER TO MEET NFPA 10. G.C. INSTALL EITHER ON WALL SURFACE, COLUMN, ALUM. MULLION, OR SHELF (USE SELF-TAPPING METAL SCREWS TO ATTACH BRACKET FOR THIS APPLICATION). MTG. HT. = 3'-6" A.F.F. TO TOP OF EXTINGUISHER.
 - (*) PROVIDE TACTILE EXIT SIGNS AS REQUIRED BY NFPA 101 SECTION 7.10.1.3. MOUNT SIGNAGE AT 60" A.F.F. TO CENTERLINE OF SIGN.
 - (E) EXIT SIGN WITH BATTERY BACKUP. SEE SHEET E3 LIGHTING PLAN
 - (K) KNOX BOX (F.D. KEY BOX)
 - (EXIT) → → DIRECTION OF EGRESS
 - TD = TRAVEL DISTANCE



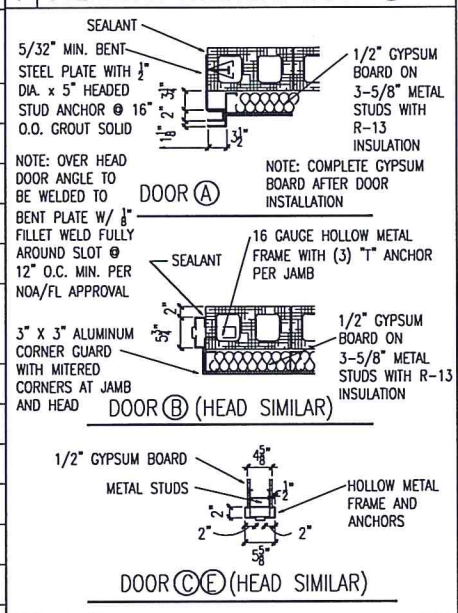
FLOOR PLAN

- REFER TO STRUCTURAL DRAWINGS FOR ALL DETAILS AND REQUIREMENTS REGARDING FOUNDATIONS, WALL REINFORCING, BOND BEAMS, LINTELS, AND ROOF FRAMING.
- REFER TO CIVIL DRAWINGS FOR LOCATIONS AND DETAILS OF SIDEWALKS, PIPE GUARDS, ETC., AS WELL AS FINISH FLOOR ELEVATION AND EXTERIOR FINISHED GRADES AROUND THE BUILDING.
- INSTALL 6" WIDE, 20 GAUGE GALVANIZED SHEET METAL STRIP BETWEEN THE BACK OF THE GYPSUM BOARD AND THE FACE OF THE METAL STUD AROUND THE ENTIRE PERIMETER OF THE BUILDING, AS WELL AS BOTH SIDES OF THE CURTAIN WALL. TOP OF STRIP TO BE 93" ABOVE FINISHED FLOOR. REFER TO SHEET A-4 FOR DETAILS OF CURTAIN WALL.
- SEE SHEET P-1 FOR LOCATION OF NON FREEZE YARD HYDRANT AND INSTALLATION REQUIREMENTS.
- INSTALL 1/2" X 4'-0" X 8'-0" AC PLYWOOD HORIZONTALLY WITH THE LONG EDGE ON THE FLOOR AND THE END JOINT CENTERING ON A STUD. APPLY PLYWOOD TO THE FACE OF GYPSUM BOARD WITH SCREWS TO FACILITATE FUTURE REPLACEMENT. SEE INTERIOR ELEVATIONS SEE 3/A4 DETAIL.
- SEE SPECIFICATIONS FOR INFORMATION ON ITEMS NOT COMPLETELY DELINEATED ON THE DRAWINGS.

2 FLOOR PLAN NOTES

LOCATION	FLOOR	BASE	WALLS	CLG.	REM.
	SEALED CONCRETE	VINYL TILE	VINYL	QUARRY TILE	
			GYPSUM BOARD	FIBER REINFORCED PANELS	METAL DECK
					GYPSUM BOARD
SALES AREA	●	●	●	●	
REST ROOMS	●	●	●	●	

MK	SIZE	TYPE	FRAME	JAMB DETAIL	HEAD DETAIL	NOTES
A	6'-0" x 8'-0"	STEEL OVERHEAD ROLL-UP	STEEL ANGLE	8/A1	6&7/A1	
B	3'-0" x 7'-0" x 1-3/4"	HOLLOW METAL	HOLLOW METAL	8/A1	8/A1	DETEX PUSH BAR WITH INTEGRAL SOUNDER
C	3'-0" x 6'-8" x 1-3/4"	SOLID CORE WOOD UNDERCUT DOOR 1"	HOLLOW METAL	8/A1	8/A1	LEVER HANDLE PRINACY SETS, CLOSER LCN JPM401, PLATED FINISH US 260, CLOSER IS PARALLEL ARM AND MOUNTS ON PUSH SIDE OF DOOR
D	3'-0" x 6'-8" x 1-3/4"	SOLID CORE WOOD UNDERCUT DOOR 1"	HOLLOW METAL	8/A1	8/A1	LEVER HANDLE PRINACY SETS, CLOSER LCN JPM401, PLATED FINISH US 260, CLOSER IS PARALLEL ARM AND MOUNTS ON PUSH SIDE OF DOOR
E	2'-6" x 6'-8" x 1-3/4"	SOLID CORE WOOD UNDERCUT DOOR 1"	HOLLOW METAL	8/A1	8/A1	UNDERCUT DOOR 1" (PAIR REQUIRED)
G	3'-0" x 7'-0" x 1-3/4"	GLASS & ALUMINUM SEE SHEET A-5	ALUMINUM	SEE MANUFACTURER'S SHOP DRAWINGS		SELF CLOSERS MOUNTED ON THE INSIDE OF BUILDING, CYLINDER LOCKS (KEY OPERATION EXTERIOR AND THUMB TURN INTERIOR), PUSH BARS AND PULLS, SIGN OVER EACH EXIT DOOR TO READ AS FOLLOWS "THIS DOOR TO REMAIN UNLOCKED WHEN BUILDING IS OCCUPIED" 1" HIGH WHITE LETTERS.
H	3'-0" x 7'-0" x 1-3/4"	GLASS & ALUMINUM SEE SHEET A-5	ALUMINUM	SEE MANUFACTURER'S SHOP DRAWINGS		
J	3'-0" x 7'-0" x 1-3/4"	HOLLOW METAL	HOLLOW METAL	8/A1	8/A1	DETEX PUSH BAR WITH INTEGRAL SOUNDER
K	3'-0" x 7'-0" x 1-3/4"	HOLLOW METAL	HOLLOW METAL	8/A1	8/A1	DETEX PUSH BAR WITH INTEGRAL SOUNDER



3 ROOM FINISH SCHEDULE

4 DOOR SCHEDULE - HOLLOW METAL DOORS & FRAMES

8 JAMB DETAILS

REVISIONS

NO.	DESCRIPTION
1	
2	
3	
4	
5	
6	

AutoZone Store No. 5071
 HIGHWAY 525 AND INTERSTATE 49
 SHREVEPORT LA 70592

Architect: George Callow - License #4224
 123 South Front Street
 Memphis, Tennessee 38103
 TEL: 901-495-8705 FAX: (901) 495-8969

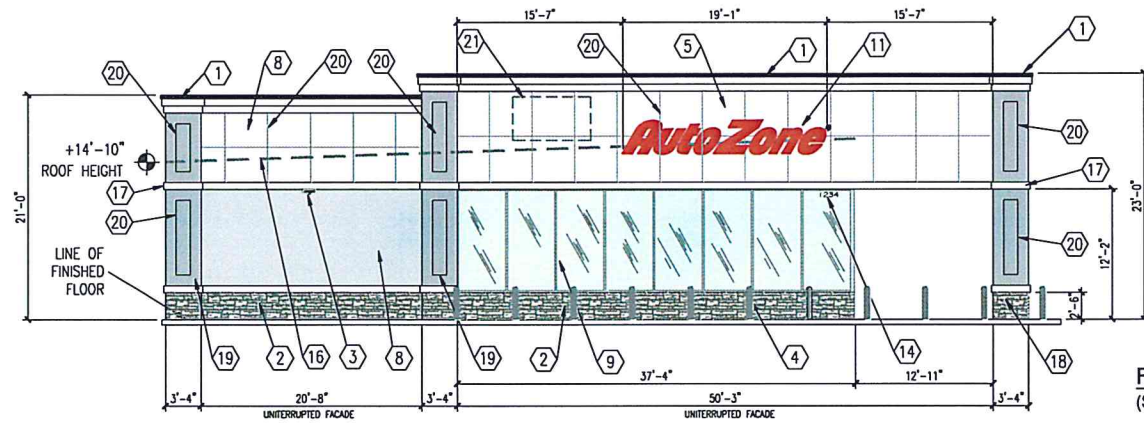
For Bidding & Contractor Information Contact:
 Dodge Data & Analytics, Tel. 1-844-326-3826 ext 9429
 Cindy.searney@construction.com



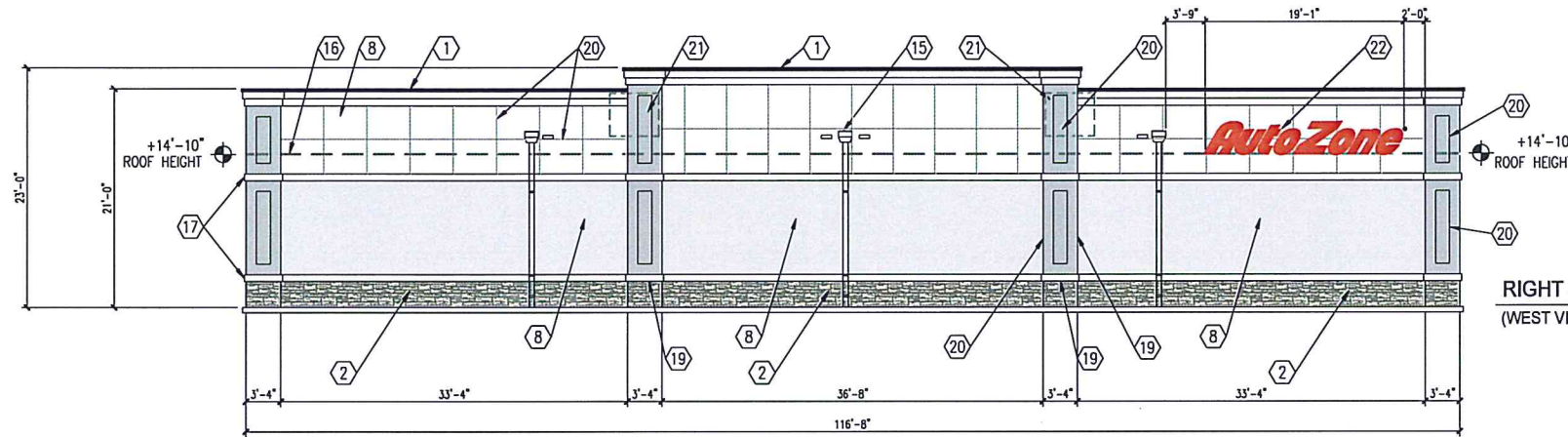
EXECUTIVE DIRECTOR APPROVAL
 By: *[Signature]*
 Date: 9-6-25

08/15/24
 7N2-L

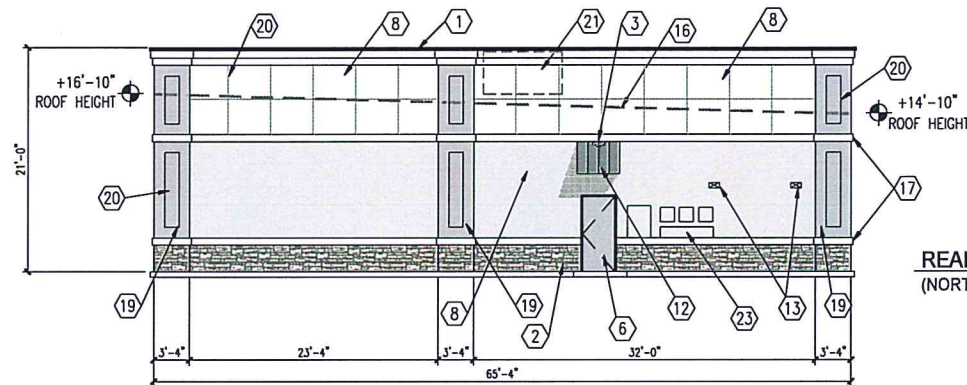
A-1



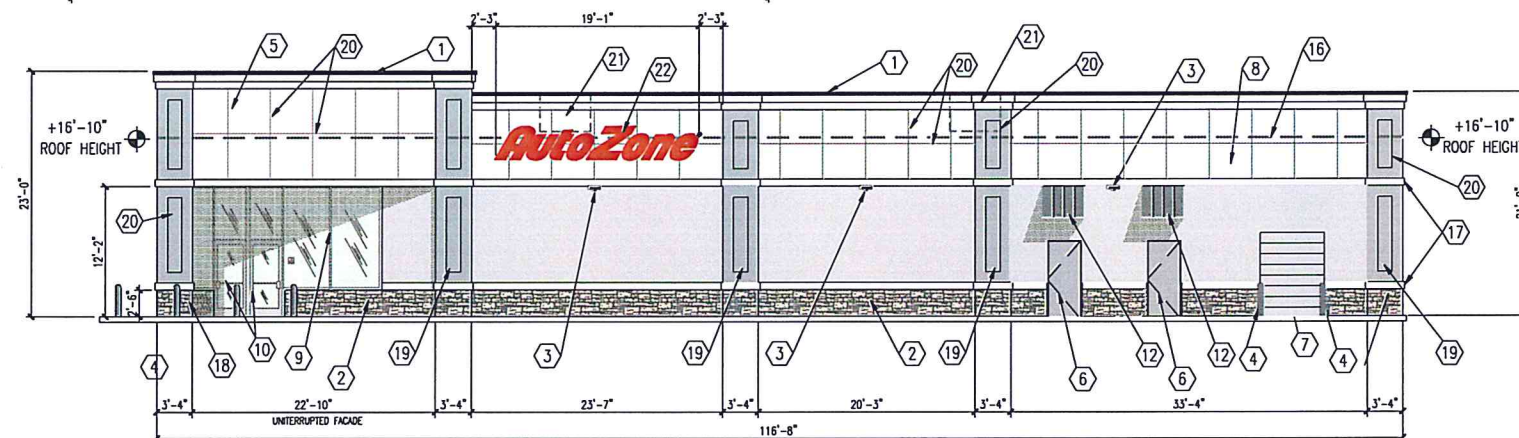
FRONT WALL
(SOUTH VIEW)



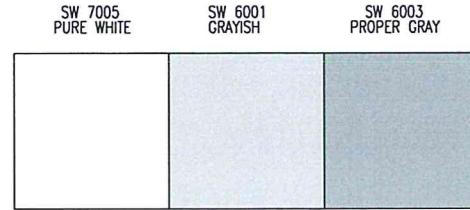
RIGHT SIDE WALL
(WEST VIEW - LOW SIDE)



REAR WALL
(NORTH VIEW)



LEFT SIDE WALL
(EAST VIEW - HIGH SIDE)



BUILDING COLORS

BORAL - CULTURED STONE COUNTRY LEDGESTONE W/ SILL CAP
COLOR: ECHO RIDGE



STONE VENEER W/ SILL CAP

BERRIDGE 'ZINC GREY'

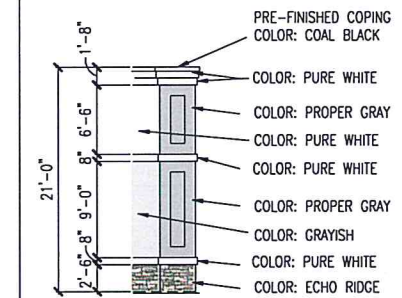


METAL AWNING

- 1 PRE-FINISHED ALUMINUM COPING: DURO-LAST "COAL BLACK"
- 2 FOAM CORNICE COLOR: SW #7005
- 3 BORAL - CULTURED STONE - COUNTRY LEDGESTONE W/ SILL CAP - COLOR: ECHO RIDGE
- 4 WALL MOUNTED LIGHT FIXTURE - BLACK FINISH
- 5 PIPE GUARD WITH ARCHITECTURAL GRAY SLEEVE
- 6 MFG. EXTERIOR INSULATED FINISH SYSTEM
- 7 COLOR: SW #7005
- 8 PAINT MAN DOOR SW # 6003 - METAL FRAMES BLACK
- 9 DO NOT PAINT OVERHEAD DOOR PAINT ANGLES BLACK
- 10 SMOOTH FACE CMU WITH STUCCO FINISH - SEE PAINT SCHEME THIS SHEET
- 11 ALUMINUM STOREFRONT - CLEAR ANODIZED FINISH W/ TINTED GLASS WINDOWS
- 12 ALUMINUM DOORS AND GLASS - CLEAR ANODIZED FINISH
- 13 FRONT WALL SIGN - 40" HIGH RED CHANNEL LETTERS
- 14 3'-2" HIGH X 3'-2" DEPTH METAL STANDING SEAM AWNING
- 15 COLOR: ZINC GREY
- 16 TOILET WALL VENTS PAINT TO MATCH WALL
- 17 STORE ADDRESS - 6" WHITE REFLECTIVE NUMBERS
- 18 SCUPPERS AND DOWNSPOUTS. PAINTED TO MATCH BACKGROUND WALL COLOR. ADJACENT 4" H. X 12" W. OVERFLOW SCUPPER. FLOWLINE 2" ABOVE ROOF.
- 19 BOND BEAM AT ROOF LINE
- 20 8" HIGH X 2" DEPTH FOAM BOARD TRIM WITH E.F.S.
- 21 3'-4" X 3'-4" WIDE CMU PILASTER. SEE PAINT DETAIL SCHEME THIS SHEET
- 22 3'-4" WIDE CMU PILASTER WITH 8" PROJECTION. SEE PAINT DETAIL SCHEME THIS SHEET
- 23 1" WIDE X 1/2" DEPTH VERTICAL AND HORIZONTAL "V" GROOVE SCORED JOINTS (TYPICAL)
- 24 HVAC UNITS SCREENED BEHIND PARAPET WALL
- 25 SIDE WALL SIGN - 36" HIGH RED CHANNEL LETTERS
- 26 ELECTRICAL EQUIPMENT

2 ELEVATION KEY NOTES

COLORS:
SHERWIN WILLIAMS "PURE WHITE" - SW 7005
SHERWIN WILLIAMS "GRAYISH" - SW 6001
SHERWIN WILLIAMS "PROPER GRAY" - SW 6003



3 EXTERIOR WALL COLOR SCHEME

EXECUTIVE DIRECTOR APPROVAL
Date 9-6-24 By *George Callow*

AUTOZONE INC.
Architect: George Callow

123 South Front Street
Memphis, Tennessee 38103
TEL: (901) 495-8705 FAX: (901) 495-8969
Email Address: george.callow@autozone.com

Prepared For: **AutoZone STORE DEVELOPMENT**
Store No. 5071
HIGHWAY 525 AND INTERSTATE 49
SHREVEPORT, LA 70592

REVISIONS
3
4
SCALE: 1/8" = 1'-0"
COLOR ELEVATIONS



DATE 08/15/2024
PROTOTYPE SIZE 7N2-L

CE1