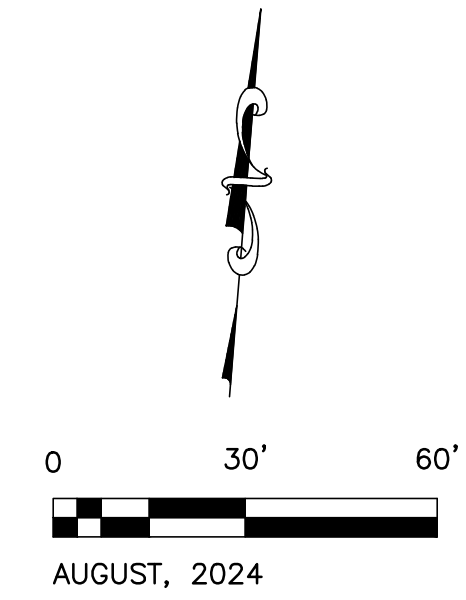
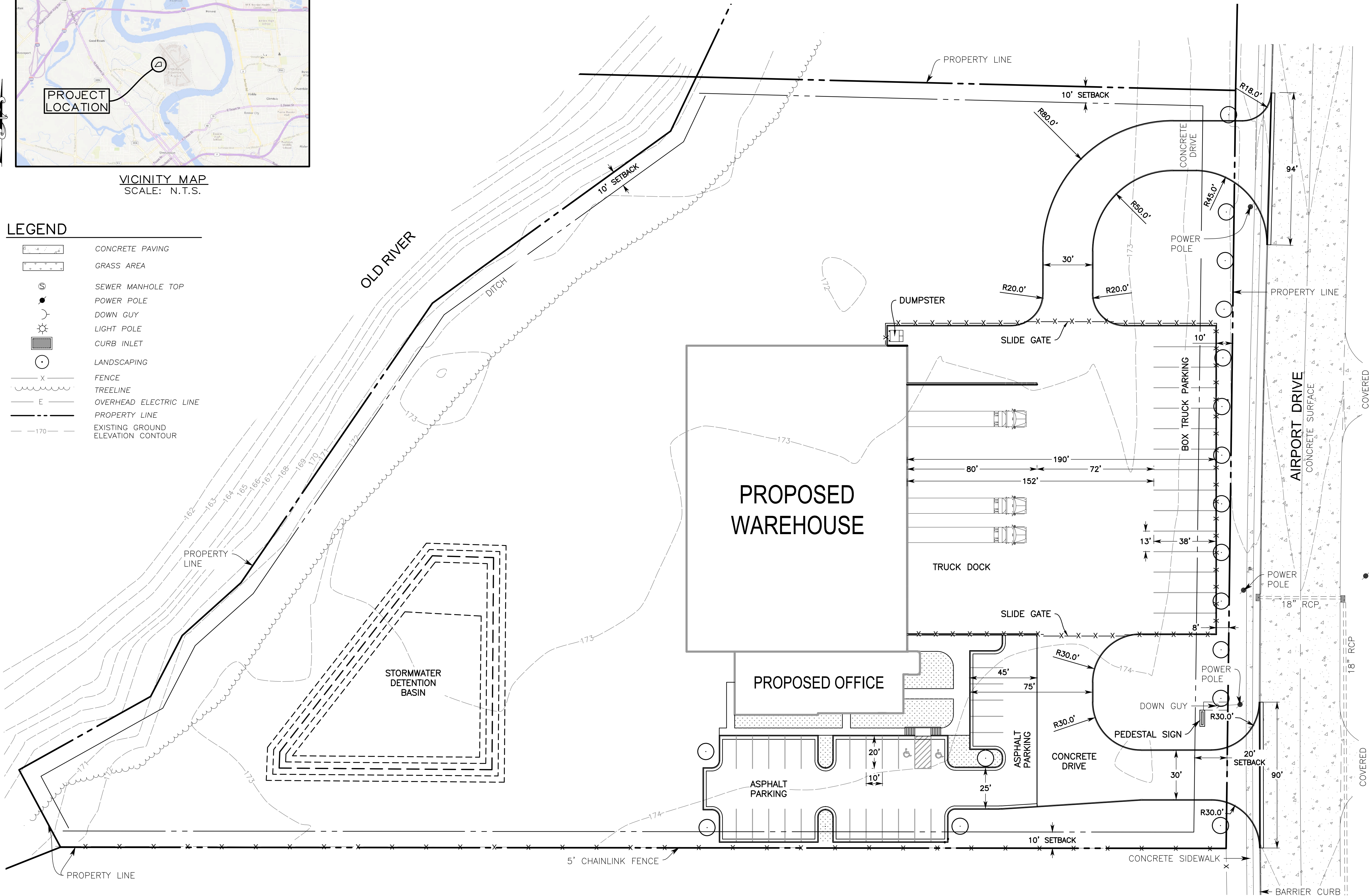


VICINITY MAP
SCALE: N.T.S.

LEGEND

- CONCRETE PAVING
- GRASS AREA
- SEWER MANHOLE TOP
- POWER POLE
- DOWN GUY
- LIGHT POLE
- CURB INLET
- LANDSCAPING
- FENCE
- TREELINE
- OVERHEAD ELECTRIC LINE
- PROPERTY LINE
- EXISTING GROUND ELEVATION CONTOUR



AUGUST, 2024

- STRIPING NOTES**
1. PROVIDE 4" WIDE WHITE STRIPES AT ALL PARKING BAYS.
 2. PROVIDE ACCESSIBLE PARKING BAY MARKING AND AISLE STRIPING PER ADA REQUIREMENTS.
 3. PROVIDE FIRE LANE STRIPING IN ACCESS DRIVE AND AROUND PERIMETER OF BUILDING.

IF SHEET IS LESS THAN 24" x 36", IT IS A REDUCED PRINT AND IS NOT TO SCALE SHOWN.



KEVIN BRYAN ARCHITECT, L.L.C.
712 TEXAS STREET
SHREVEPORT, LOUISIANA 71101
WORK 318-673-9980
KEVIN@KEVINBRYANARCHITECT.COM

REVISIONS



ARCHITECT

PRELIMINARY
NOT FOR
CONSTRUCTION

ENGINEER

PRELIMINARY PLAN
FOR
REVIEW
ONLY

Luke S. Haney
Professional Engineer #46948
FORTE & TABLADA, INC.

PROJECT

**ROBERTSON PRODUCE
COLD STORAGE**
AIRPORT DRIVE, SHREVEPORT, LA 71107

PROJECT INFO

| | |
|-------|-------------|
| Date | AUGUST 2024 |
| Scale | AS SHOWN |
| Drawn | |
| Job | |

SHEET

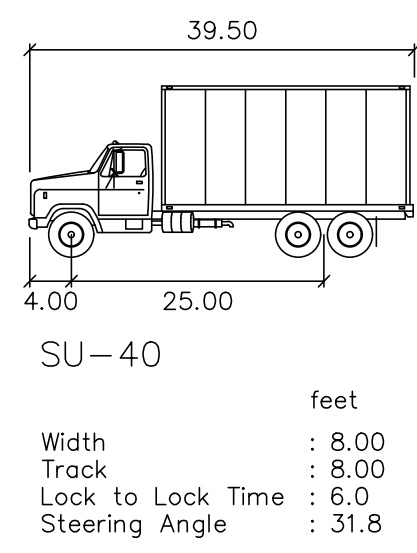
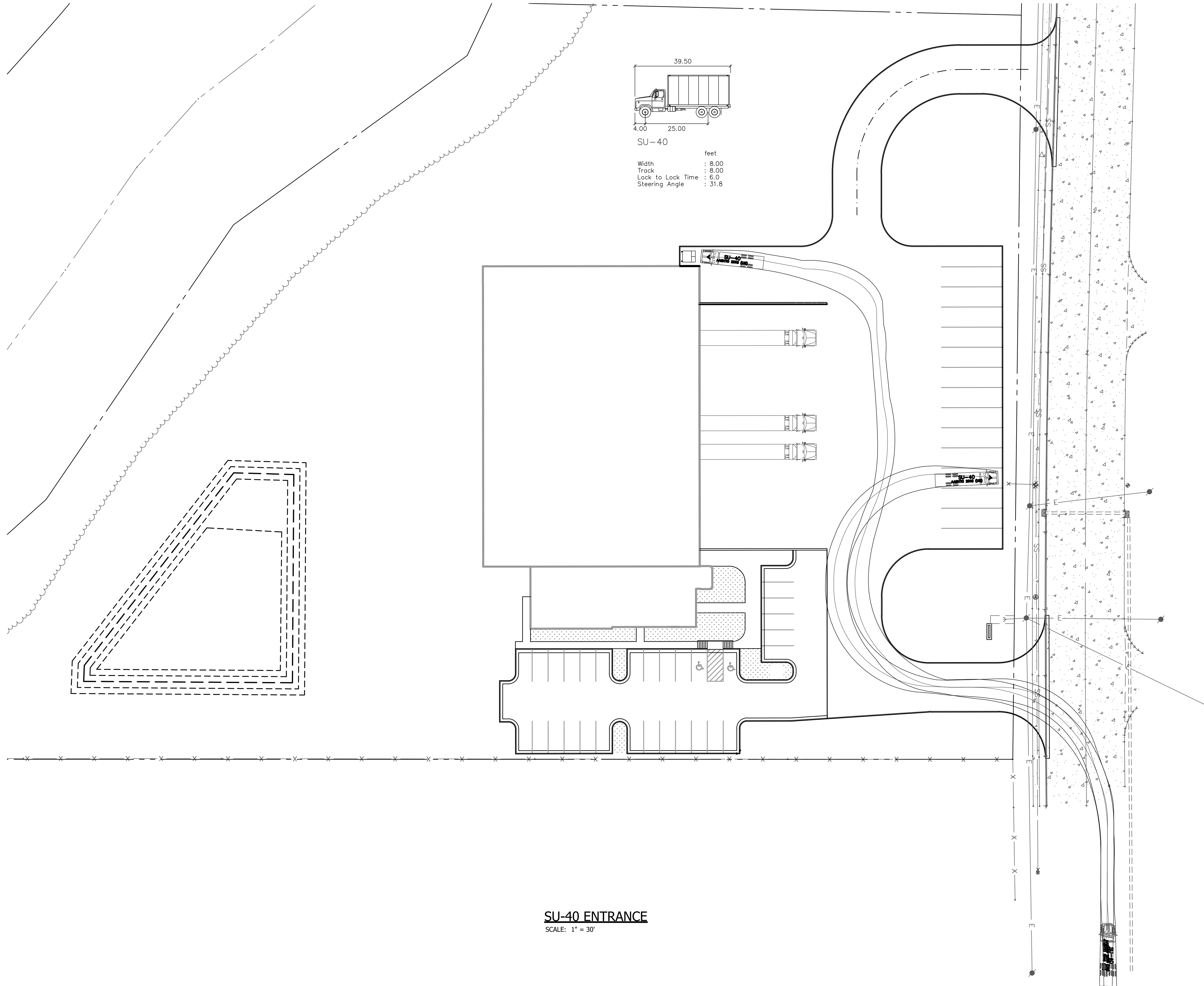
1



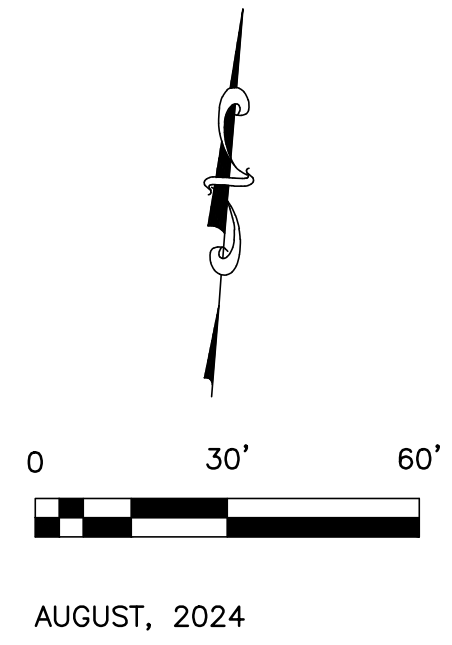
1010 MARSHALL STREET
SHREVEPORT, LOUISIANA 71101
PHONE (510)798-3344
FAX (318)798-2090
WWW.FORTEANDTABLADA.COM

SITE PLAN FOR PRELIMINARY
MPC SUBMITTAL

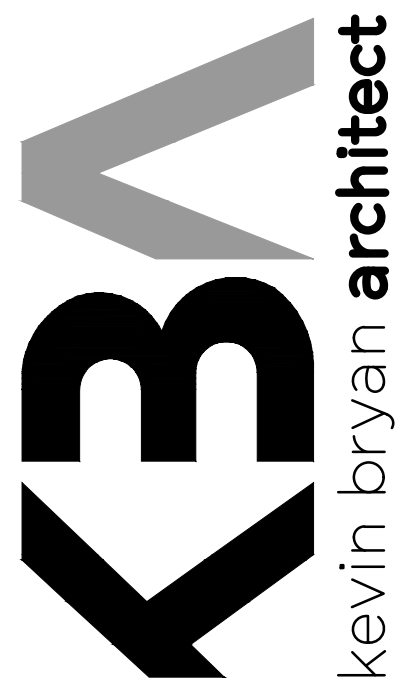
R:\2024\2024275 - Robertson Produce\1.0 CAD\Production Plans\2024275-MPC-SITE PLAN (PRELIMINARY).dwg, 8/19/2024, 2:54:14 PM



SU-40 ENTRANCE
SCALE: 1" = 30'



AUGUST, 2024



KEVIN BRYAN ARCHITECT, L.L.C.
712 TEXAS STREET
SHREVEPORT, LOUISIANA 71101
WORK 318-673-9960
KEVIN@KEVINBRYANARCHITECT.COM

REVISIONS

| | |
|--|--|
| | |
| | |
| | |
| | |
| | |



ARCHITECT

PRELIMINARY
NOT FOR
CONSTRUCTION

ENGINEER

PRELIMINARY PLAN
FOR
REVIEW
ONLY

Luke S. Haney
Professional Engineer #46948
FORTE & TABLADA, INC.

PROJECT

ROBERTSON PRODUCE
COLD STORAGE
AIRPORT DRIVE, SHREVEPORT, LA 71107

PROJECT INFO

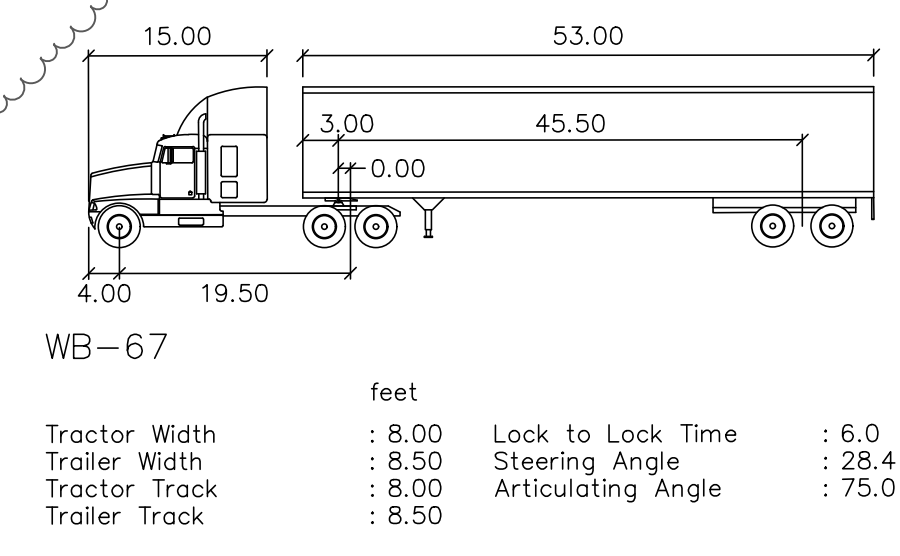
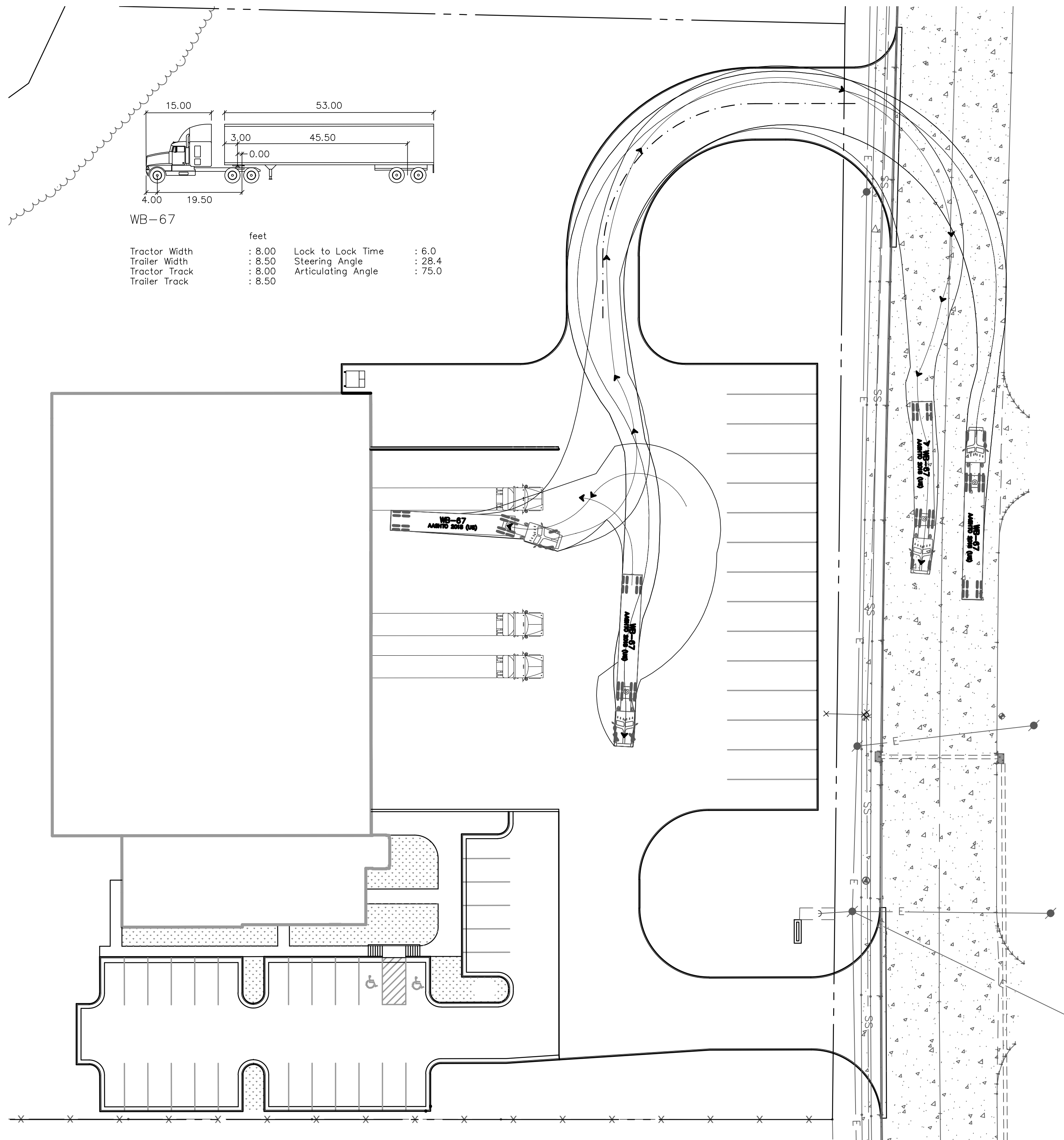
| | |
|-------|-------------|
| Date | AUGUST 2024 |
| Scale | AS SHOWN |
| Drawn | |
| Job | |

SHEET

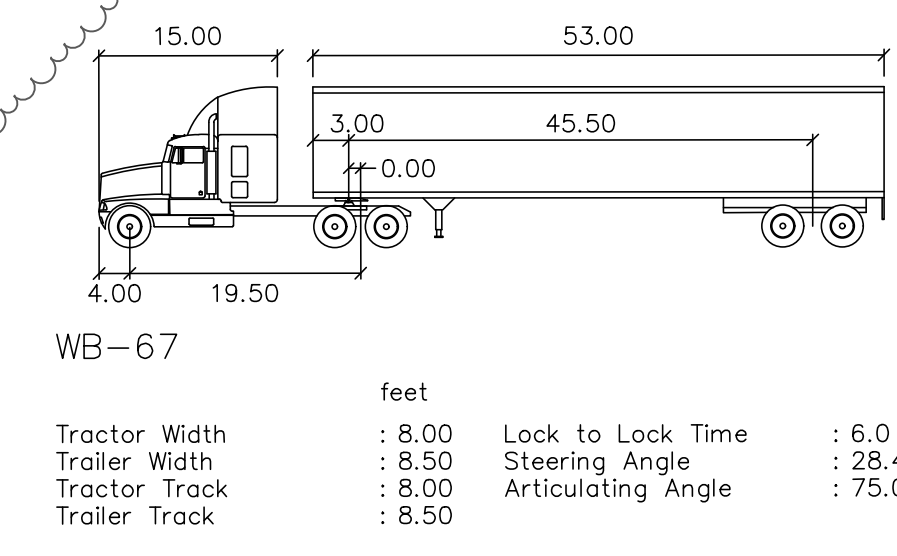
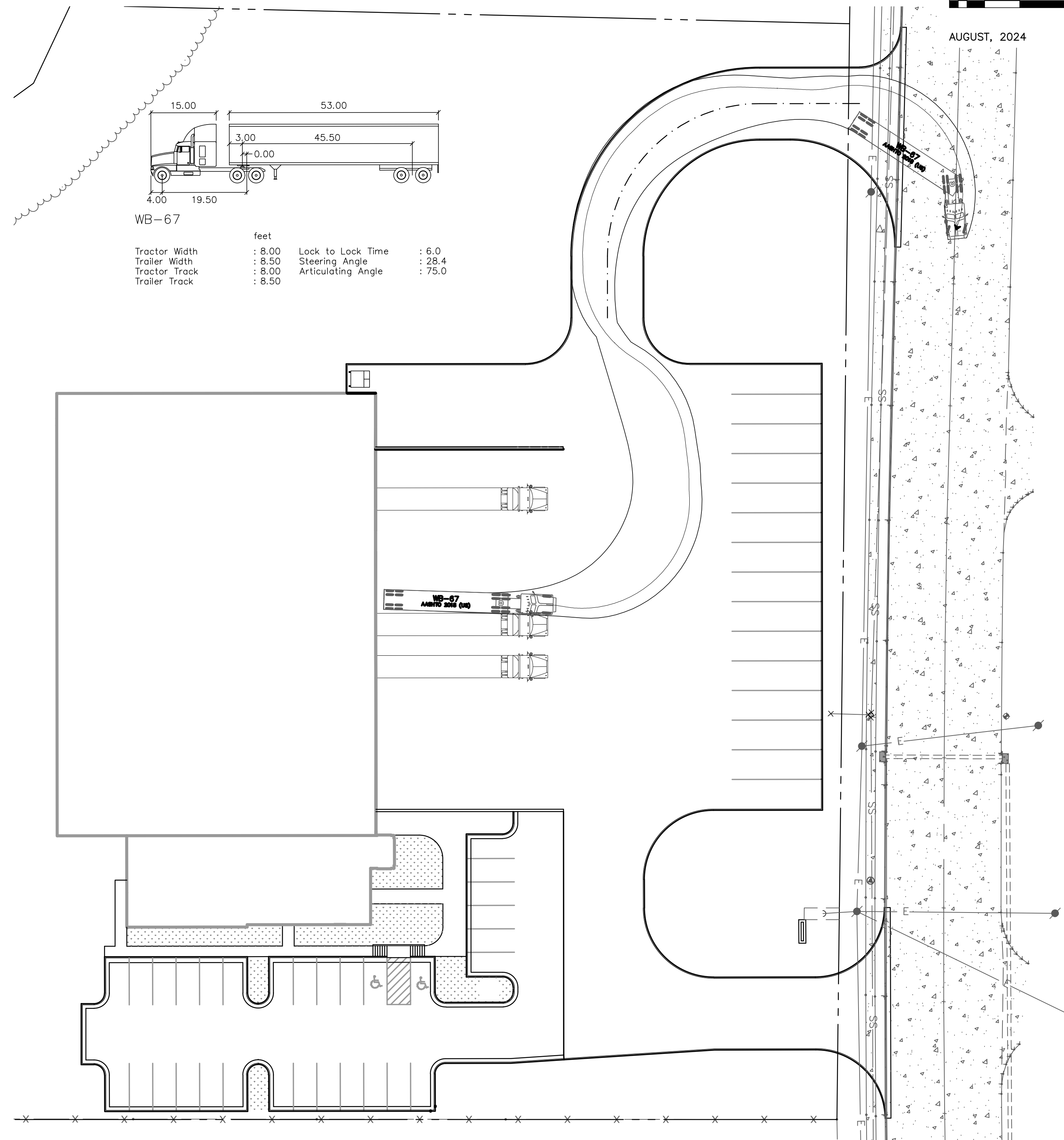


1010 MARSHALL STREET
SHREVEPORT, LOUISIANA 71101
PHONE (318)798-3344
FAX (318)798-2090
WWW.FORTEANDTABLADA.COM

R:\2024\24275 - Robertson Produce\7.0 CAD\Production Plan\AUTOTURN\24275-Autoturn.dwg, 8/19/2024 3:20:04 PM



WB-67 ENTRANCE AND EXIT
SCALE: 1" = 30'



WB-67 EXIT
SCALE: 1" = 30'

FORTE & TABLADA
1010 MARSHALL STREET
SHREVEPORT, LOUISIANA 71101
PHONE: (504) 938-3344
FAX: (504) 938-2090
WWW.FORTEANDTABLADA.COM

KBA
kevin bryan architect

KEVIN BRYAN ARCHITECT, L.L.C.
712 TEXAS STREET
SHREVEPORT, LOUISIANA 71101
WORK: 318-473-9980
KEVIN@KEVINBRYANARCHITECT.COM

REVISIONS

| | | |
|--|--|--|
| | | |
| | | |
| | | |
| | | |
| | | |

WIELAND

ARCHITECT
PRELIMINARY
NOT FOR
CONSTRUCTION

ENGINEER
PRELIMINARY PLAN
FOR
REVIEW
ONLY
Luke S. Haney
Professional Engineer #46948
FORTE & TABLADA, INC.

PROJECT
ROBERTSON PRODUCE
COLD STORAGE
AIRPORT DRIVE, SHREVEPORT, LA 71107

PROJECT INFO

| | |
|-------|-------------|
| Date | AUGUST 2024 |
| Scale | AS SHOWN |
| Drawn | |
| Job | |

SHEET
3

R:\2024\240275 - Robertson Produce\7.0 CAD\Production\Plan\AUTOCAD\2024\2024-08-01\192024_3_28_46 PM