

Plotted On: Tuesday, June 18, 2024 1:37:51 PM. Plotted By: ANTHONY PRESTON
 File Location: F:\Active Projects\2433 Loyola Mold Mitigation\09 DWG\9.04_CD24333 Loyola.dwg

1 SITE PLAN
 A0.1 SCALE: 1" = 30'-0"

JORDAN STREET

ADMINISTRATION

EXISTING PARKING
13 SPACES

EXISTING PARKING

CICERO STREET

EXISTING PARKING
17 SPACES

CLASSROOM
BUILDING

GYMNASIUM
(EXISTING SHELTER &
RESTROOMS)

132'-4"

PROPOSED
LOCATION
OF MODULAR
BUILDINGS

EXISTING PARKING
8 SPACES

CLASSROOM BUILDING
(MOLD REMEDIATION)

EXISTING PARKING
9 SPACES

EXISTING
PAVILION

CAFETERIA
(EXISTING SHELTER
& RESTROOMS)

EXECUTIVE
DIRECTOR
APPROVAL

7-15-24
Date

ACB
By

EXISTING PARKING
153 SPACES

MARGARET PLACE



SOMDAL ASSOCIATES, LLC
 ARCHITECTURE INTERIOR DESIGN

This drawing and design is the property of Somdal Associates, LLC. They are submitted on the condition that they are not to be used, reproduced, or copied, in whole or part, or used for marketing purposes to others, without prior written consent of Somdal Associates, LLC. All common law rights of copyright & otherwise are hereby specifically reserved.



ADDITIONS FOR:
LOYOLA COLLEGE PREP MODULAR BUILDING

921 JORDAN ST SHREVEPORT, LA 71101

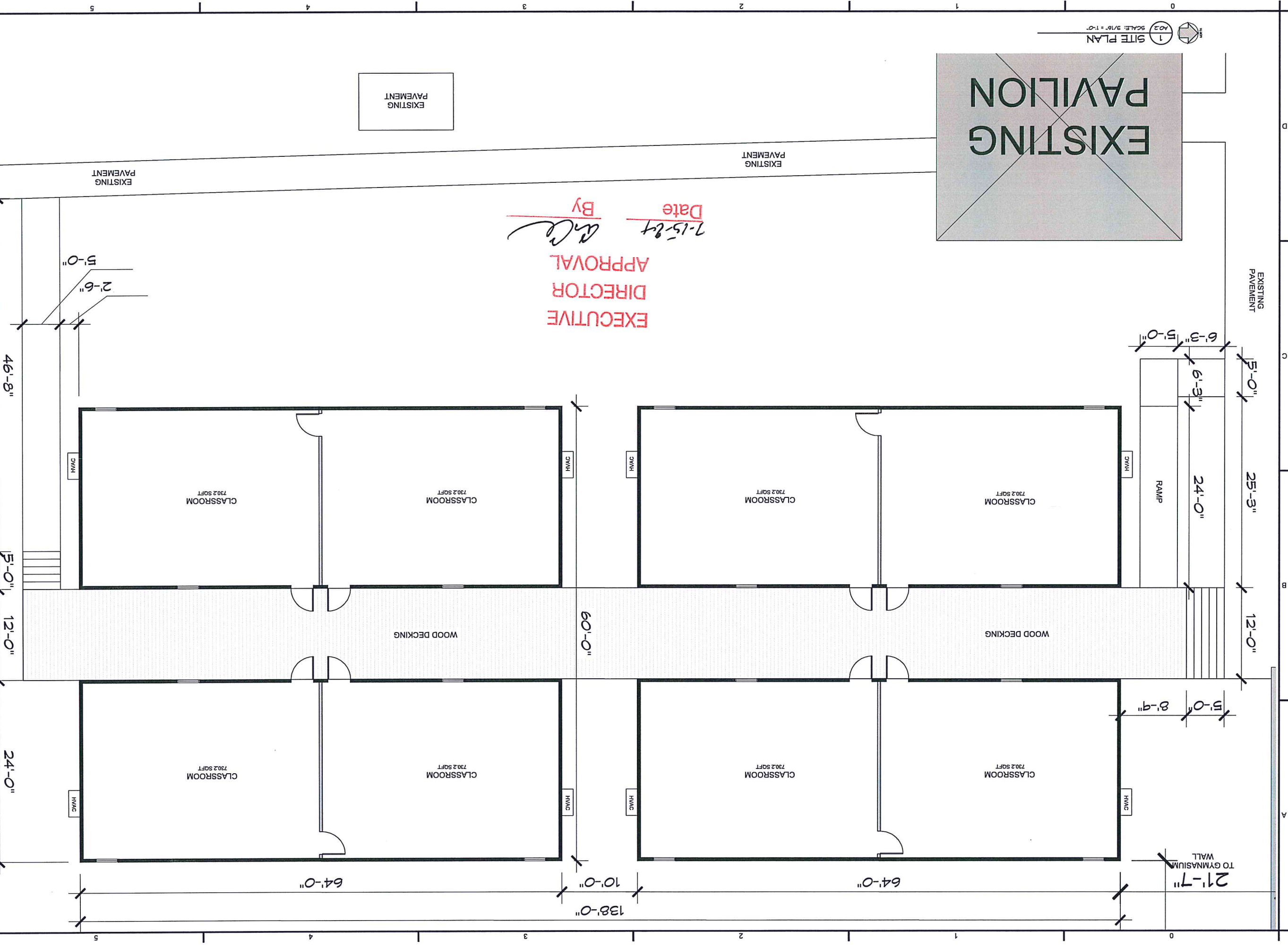
Date: June 18, 2024
 REVISIONS:

Drawn: AWP
 Job: 2433
 Sheet:

A0.1
 00 of ?? Sheets



EXECUTIVE DIRECTOR APPROVAL
Date 7-15-24
By ABC



00 of 22 Sheets
A0.2
Sheet
Job: 2433
Drawn: AMP

REVISIONS:
Date: June 17, 2024

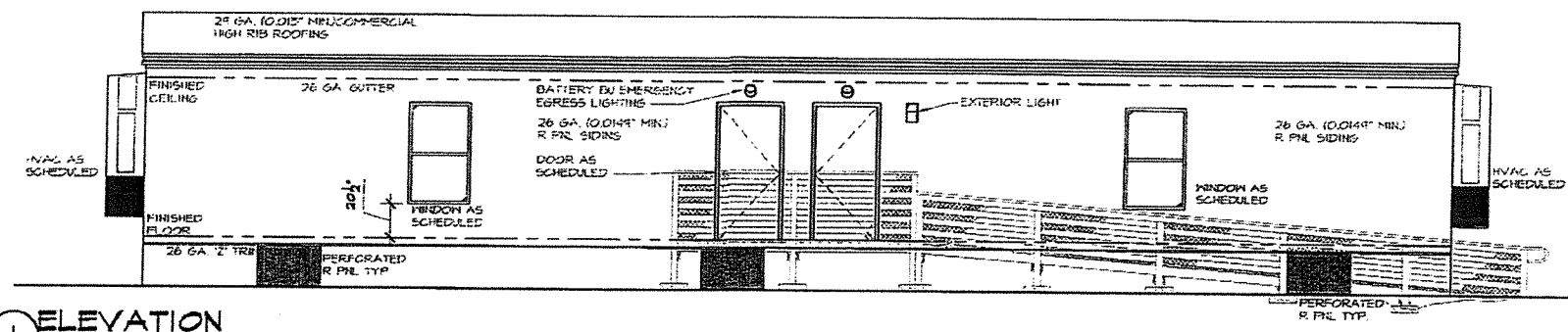
ADDITIONS FOR:
LOYOLA COLLEGE PREP MODULAR BUILDING
921 JORDAN ST SHREVEPORT, LA 71101



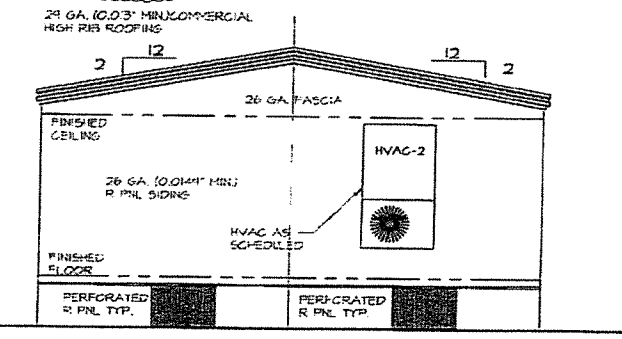
This drawing and design is the property of Anthony Preston, P.E., and shall remain his property. It is to be used, reproduced, or copied in whole or in part, or in any manner, without the written consent of Anthony Preston, P.E. Any violation of this agreement shall be cause for legal action.



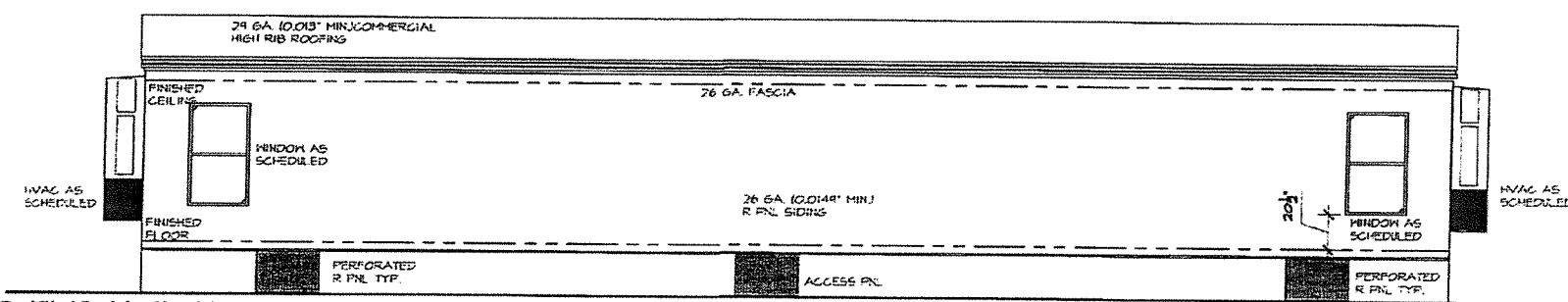
NOTE:
 1. FOUNDATION VENTING PROVIDED BY PERFORATED R. PANEL W/ MAX DIA. HOLES OF 1/2". THIS BUILDING REQUIRES 10.24 NET SFT PER SECTION 1203.3.1 IBC 2004.
 2. THE OWNER SHALL BE RESPONSIBLE TO INSTALL AN APPROVED AND LISTED COMPONENT IN ACCORDANCE WITH ASTM E 1996 OR ASTM E 1886 FOR THE PROTECTION OF ALL EXTERIOR OPENINGS (WINDOWS, LOUVERS AND DOORS) WHEN THIS STRUCTURE IS PLACED IN A HURRICANE DEBRIS REGION AS SPECIFIED IN THE 2004 INTERNATIONAL BUILDING CODE SECTION 1604.1.2 PRIOR TO FINAL INSPECTION AND OCCUPANCY.



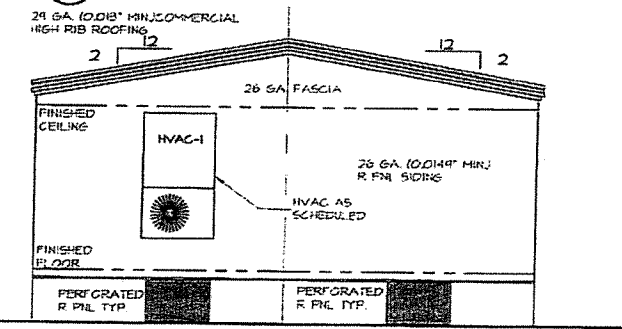
1 ELEVATION
 SCALE: 1/4" = 1'-0"



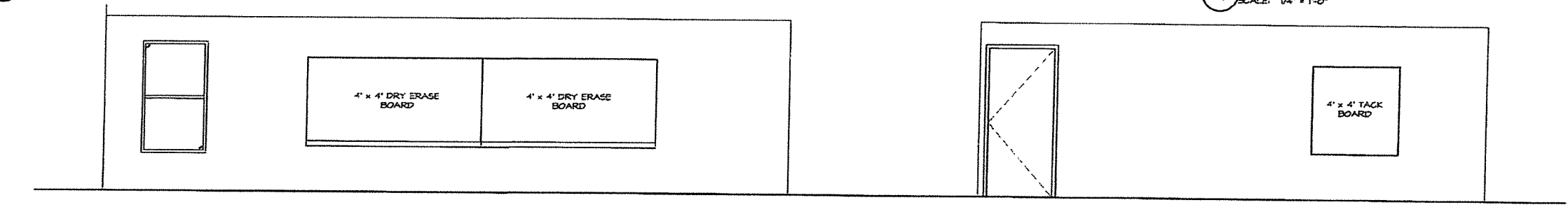
3 ELEVATION
 SCALE: 1/4" = 1'-0"



2 ELEVATION
 SCALE: 1/4" = 1'-0"



4 ELEVATION
 SCALE: 1/4" = 1'-0"



5 ELEVATION
 SCALE: 3/8" = 1'-0"

6 ELEVATION
 SCALE: 3/8" = 1'-0"



| | |
|----------------|------------------|
| PLAN REVISIONS | |
| 2-4-18 | DEVIATION REPORT |
| MARK | DESCRIPTION |
| 1 | ADDED |
| 2 | ADDED |
| 3 | ADDED |
| 4 | ADDED |
| 5 | ADDED |
| 6 | ADDED |
| 7 | ADDED |
| 8 | ADDED |
| 9 | ADDED |
| 10 | ADDED |
| 11 | ADDED |
| 12 | ADDED |
| 13 | ADDED |
| 14 | ADDED |
| 15 | ADDED |
| 16 | ADDED |
| 17 | ADDED |
| 18 | ADDED |
| 19 | ADDED |
| 20 | ADDED |
| 21 | ADDED |
| 22 | ADDED |
| 23 | ADDED |
| 24 | ADDED |
| 25 | ADDED |
| 26 | ADDED |
| 27 | ADDED |
| 28 | ADDED |
| 29 | ADDED |
| 30 | ADDED |
| 31 | ADDED |
| 32 | ADDED |
| 33 | ADDED |
| 34 | ADDED |
| 35 | ADDED |
| 36 | ADDED |
| 37 | ADDED |
| 38 | ADDED |
| 39 | ADDED |
| 40 | ADDED |
| 41 | ADDED |
| 42 | ADDED |
| 43 | ADDED |
| 44 | ADDED |
| 45 | ADDED |
| 46 | ADDED |
| 47 | ADDED |
| 48 | ADDED |
| 49 | ADDED |
| 50 | ADDED |
| 51 | ADDED |
| 52 | ADDED |
| 53 | ADDED |
| 54 | ADDED |
| 55 | ADDED |
| 56 | ADDED |
| 57 | ADDED |
| 58 | ADDED |
| 59 | ADDED |
| 60 | ADDED |
| 61 | ADDED |
| 62 | ADDED |
| 63 | ADDED |
| 64 | ADDED |
| 65 | ADDED |
| 66 | ADDED |
| 67 | ADDED |
| 68 | ADDED |
| 69 | ADDED |
| 70 | ADDED |
| 71 | ADDED |
| 72 | ADDED |
| 73 | ADDED |
| 74 | ADDED |
| 75 | ADDED |
| 76 | ADDED |
| 77 | ADDED |
| 78 | ADDED |
| 79 | ADDED |
| 80 | ADDED |
| 81 | ADDED |
| 82 | ADDED |
| 83 | ADDED |
| 84 | ADDED |
| 85 | ADDED |
| 86 | ADDED |
| 87 | ADDED |
| 88 | ADDED |
| 89 | ADDED |
| 90 | ADDED |
| 91 | ADDED |
| 92 | ADDED |
| 93 | ADDED |
| 94 | ADDED |
| 95 | ADDED |
| 96 | ADDED |
| 97 | ADDED |
| 98 | ADDED |
| 99 | ADDED |
| 100 | ADDED |
| 101 | ADDED |
| 102 | ADDED |
| 103 | ADDED |
| 104 | ADDED |
| 105 | ADDED |
| 106 | ADDED |
| 107 | ADDED |
| 108 | ADDED |
| 109 | ADDED |
| 110 | ADDED |
| 111 | ADDED |
| 112 | ADDED |
| 113 | ADDED |
| 114 | ADDED |
| 115 | ADDED |
| 116 | ADDED |
| 117 | ADDED |
| 118 | ADDED |
| 119 | ADDED |
| 120 | ADDED |
| 121 | ADDED |
| 122 | ADDED |
| 123 | ADDED |
| 124 | ADDED |
| 125 | ADDED |
| 126 | ADDED |
| 127 | ADDED |
| 128 | ADDED |
| 129 | ADDED |
| 130 | ADDED |
| 131 | ADDED |
| 132 | ADDED |
| 133 | ADDED |
| 134 | ADDED |
| 135 | ADDED |
| 136 | ADDED |
| 137 | ADDED |
| 138 | ADDED |
| 139 | ADDED |
| 140 | ADDED |
| 141 | ADDED |
| 142 | ADDED |
| 143 | ADDED |
| 144 | ADDED |
| 145 | ADDED |
| 146 | ADDED |
| 147 | ADDED |
| 148 | ADDED |
| 149 | ADDED |
| 150 | ADDED |
| 151 | ADDED |
| 152 | ADDED |
| 153 | ADDED |
| 154 | ADDED |
| 155 | ADDED |
| 156 | ADDED |
| 157 | ADDED |
| 158 | ADDED |
| 159 | ADDED |
| 160 | ADDED |
| 161 | ADDED |
| 162 | ADDED |
| 163 | ADDED |
| 164 | ADDED |
| 165 | ADDED |
| 166 | ADDED |
| 167 | ADDED |
| 168 | ADDED |
| 169 | ADDED |
| 170 | ADDED |
| 171 | ADDED |
| 172 | ADDED |
| 173 | ADDED |
| 174 | ADDED |
| 175 | ADDED |
| 176 | ADDED |
| 177 | ADDED |
| 178 | ADDED |
| 179 | ADDED |
| 180 | ADDED |
| 181 | ADDED |
| 182 | ADDED |
| 183 | ADDED |
| 184 | ADDED |
| 185 | ADDED |
| 186 | ADDED |
| 187 | ADDED |
| 188 | ADDED |
| 189 | ADDED |
| 190 | ADDED |
| 191 | ADDED |
| 192 | ADDED |
| 193 | ADDED |
| 194 | ADDED |
| 195 | ADDED |
| 196 | ADDED |
| 197 | ADDED |
| 198 | ADDED |
| 199 | ADDED |
| 200 | ADDED |
| 201 | ADDED |
| 202 | ADDED |
| 203 | ADDED |
| 204 | ADDED |
| 205 | ADDED |
| 206 | ADDED |
| 207 | ADDED |
| 208 | ADDED |
| 209 | ADDED |
| 210 | ADDED |
| 211 | ADDED |
| 212 | ADDED |
| 213 | ADDED |
| 214 | ADDED |
| 215 | ADDED |
| 216 | ADDED |
| 217 | ADDED |
| 218 | ADDED |
| 219 | ADDED |
| 220 | ADDED |
| 221 | ADDED |
| 222 | ADDED |
| 223 | ADDED |
| 224 | ADDED |
| 225 | ADDED |
| 226 | ADDED |
| 227 | ADDED |
| 228 | ADDED |
| 229 | ADDED |
| 230 | ADDED |
| 231 | ADDED |
| 232 | ADDED |
| 233 | ADDED |
| 234 | ADDED |
| 235 | ADDED |
| 236 | ADDED |
| 237 | ADDED |
| 238 | ADDED |
| 239 | ADDED |
| 240 | ADDED |
| 241 | ADDED |
| 242 | ADDED |
| 243 | ADDED |
| 244 | ADDED |
| 245 | ADDED |
| 246 | ADDED |
| 247 | ADDED |
| 248 | ADDED |
| 249 | ADDED |
| 250 | ADDED |
| 251 | ADDED |
| 252 | ADDED |
| 253 | ADDED |
| 254 | ADDED |
| 255 | ADDED |
| 256 | ADDED |
| 257 | ADDED |
| 258 | ADDED |
| 259 | ADDED |
| 260 | ADDED |
| 261 | ADDED |
| 262 | ADDED |
| 263 | ADDED |
| 264 | ADDED |
| 265 | ADDED |
| 266 | ADDED |
| 267 | ADDED |
| 268 | ADDED |
| 269 | ADDED |
| 270 | ADDED |
| 271 | ADDED |
| 272 | ADDED |
| 273 | ADDED |
| 274 | ADDED |
| 275 | ADDED |
| 276 | ADDED |
| 277 | ADDED |
| 278 | ADDED |
| 279 | ADDED |
| 280 | ADDED |
| 281 | ADDED |
| 282 | ADDED |
| 283 | ADDED |
| 284 | ADDED |
| 285 | ADDED |
| 286 | ADDED |
| 287 | ADDED |
| 288 | ADDED |
| 289 | ADDED |
| 290 | ADDED |
| 291 | ADDED |
| 292 | ADDED |
| 293 | ADDED |
| 294 | ADDED |
| 295 | ADDED |
| 296 | ADDED |
| 297 | ADDED |
| 298 | ADDED |
| 299 | ADDED |
| 300 | ADDED |
| 301 | ADDED |
| 302 | ADDED |
| 303 | ADDED |
| 304 | ADDED |
| 305 | ADDED |
| 306 | ADDED |
| 307 | ADDED |
| 308 | ADDED |
| 309 | ADDED |
| 310 | ADDED |
| 311 | ADDED |
| 312 | ADDED |
| 313 | ADDED |
| 314 | ADDED |
| 315 | ADDED |
| 316 | ADDED |
| 317 | ADDED |
| 318 | ADDED |
| 319 | ADDED |
| 320 | ADDED |
| 321 | ADDED |
| 322 | ADDED |
| 323 | ADDED |
| 324 | ADDED |
| 325 | ADDED |
| 326 | ADDED |
| 327 | ADDED |
| 328 | ADDED |
| 329 | ADDED |
| 330 | ADDED |
| 331 | ADDED |
| 332 | ADDED |
| 333 | ADDED |
| 334 | ADDED |
| 335 | ADDED |
| 336 | ADDED |
| 337 | ADDED |
| 338 | ADDED |
| 339 | ADDED |
| 340 | ADDED |
| 341 | ADDED |
| 342 | ADDED |
| 343 | ADDED |
| 344 | ADDED |
| 345 | ADDED |
| 346 | ADDED |
| 347 | ADDED |
| 348 | ADDED |
| 349 | ADDED |
| 350 | ADDED |
| 351 | ADDED |
| 352 | ADDED |
| 353 | ADDED |
| 354 | ADDED |
| 355 | ADDED |
| 356 | ADDED |
| 357 | ADDED |
| 358 | ADDED |
| 359 | ADDED |
| 360 | ADDED |
| 361 | ADDED |
| 362 | ADDED |
| 363 | ADDED |
| 364 | ADDED |
| 365 | ADDED |
| 366 | ADDED |
| 367 | ADDED |
| 368 | ADDED |
| 369 | ADDED |
| 370 | ADDED |
| 371 | ADDED |
| 372 | ADDED |
| 373 | ADDED |
| 374 | ADDED |
| 375 | ADDED |
| 376 | ADDED |
| 377 | ADDED |
| 378 | ADDED |
| 379 | ADDED |
| 380 | ADDED |
| 381 | ADDED |
| 382 | ADDED |
| 383 | ADDED |
| 384 | ADDED |
| 385 | ADDED |
| 386 | ADDED |
| 387 | ADDED |
| 388 | ADDED |
| 389 | ADDED |
| 390 | ADDED |
| 391 | ADDED |
| 392 | ADDED |
| 393 | ADDED |
| 394 | ADDED |
| 395 | ADDED |
| 396 | ADDED |
| 397 | ADDED |
| 398 | ADDED |
| 399 | ADDED |
| 400 | ADDED |
| 401 | ADDED |
| 402 | ADDED |
| 403 | ADDED |
| 404 | ADDED |
| 405 | ADDED |
| 406 | ADDED |
| 407 | ADDED |
| 408 | ADDED |
| 409 | ADDED |
| 410 | ADDED |
| 411 | ADDED |
| 412 | ADDED |
| 413 | ADDED |
| 414 | ADDED |
| 415 | ADDED |
| 416 | ADDED |
| 417 | ADDED |
| 418 | ADDED |
| 419 | ADDED |
| 420 | ADDED |
| 421 | ADDED |
| 422 | ADDED |
| 423 | ADDED |
| 424 | ADDED |
| 425 | ADDED |
| 426 | ADDED |
| 427 | ADDED |
| 428 | ADDED |
| 429 | ADDED |
| 430 | ADDED |
| 431 | ADDED |
| 432 | ADDED |
| 433 | ADDED |
| 434 | ADDED |
| 435 | ADDED |
| 436 | ADDED |
| 437 | ADDED |
| 438 | ADDED |
| 439 | ADDED |
| 440 | ADDED |
| 441 | ADDED |
| 442 | ADDED |
| 443 | ADDED |
| 444 | ADDED |
| 445 | ADDED |
| 446 | ADDED |
| 447 | ADDED |
| 448 | ADDED |
| 449 | ADDED |
| 450 | ADDED |
| 451 | ADDED |
| 452 | ADDED |
| 453 | ADDED |
| 454 | ADDED |
| 455 | ADDED |
| 456 | ADDED |
| 457 | ADDED |
| 458 | ADDED |
| 459 | ADDED |
| 460 | ADDED |
| 461 | ADDED |
| 462 | ADDED |
| 463 | ADDED |
| 464 | ADDED |
| 465 | ADDED |
| 466 | ADDED |
| 467 | ADDED |
| 468 | ADDED |
| 469 | ADDED |
| 470 | ADDED |
| 471 | ADDED |
| 472 | ADDED |
| 473 | ADDED |
| 474 | |