

NOTE: OVERHEAD LINES ON NORTH SIDE

RE-USE EXISTING WATER AND SEWER SERVICES

EAST 70TH STREET-LA. HWY. 511

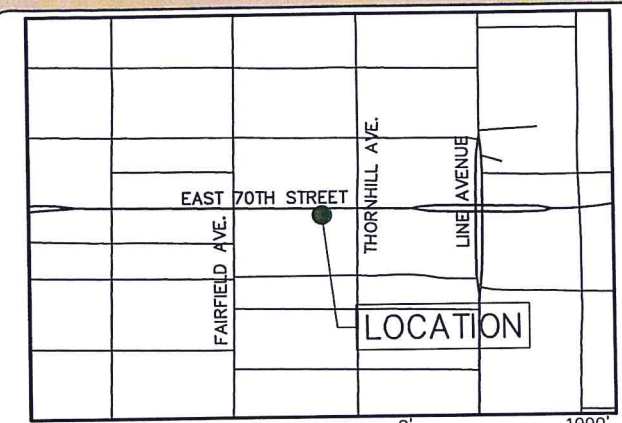
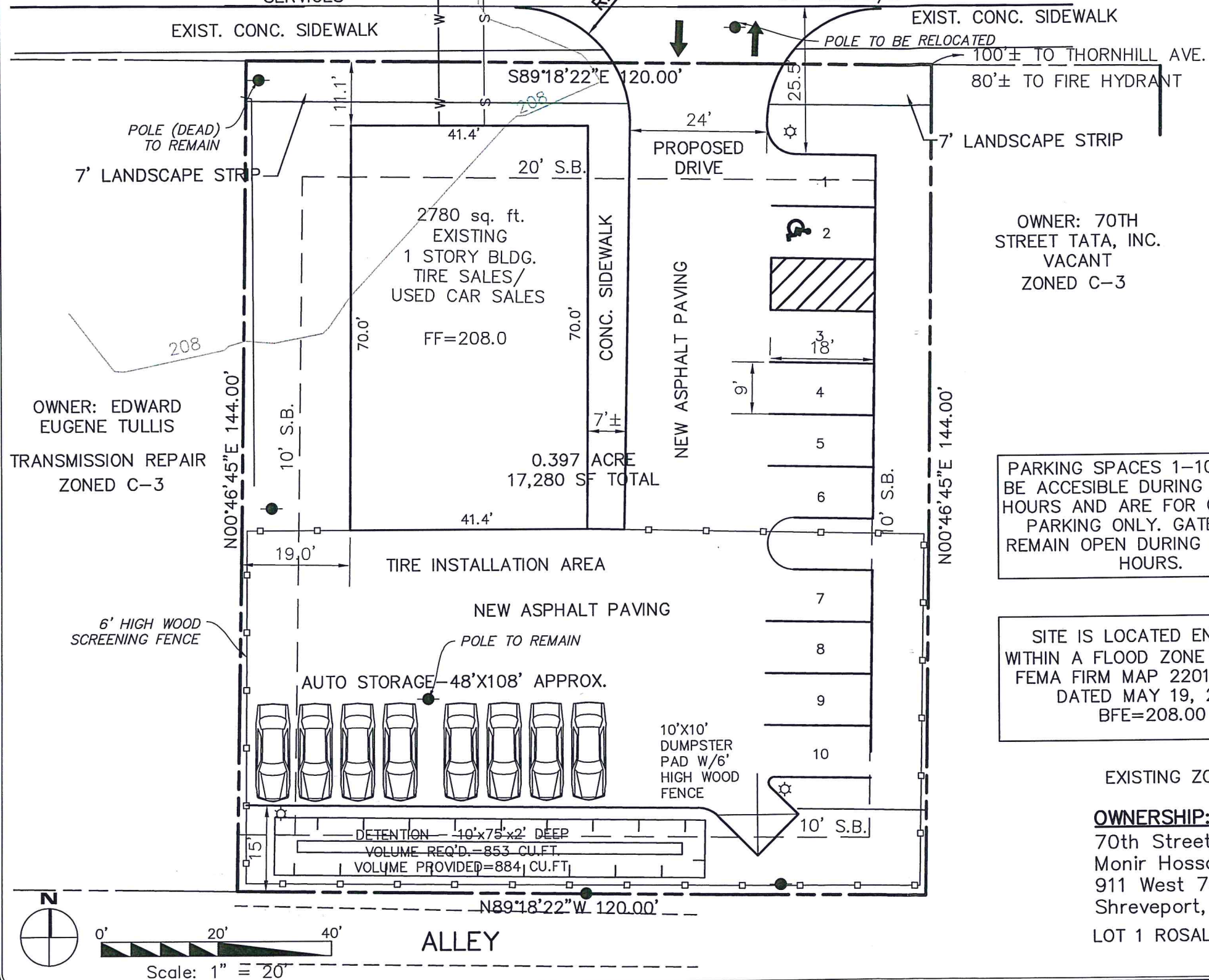
EXISTING 40' WIDE ASPHALT PAVING
60' WIDE R/W



Mohr and Associates, Inc.

Consulting Civil Engineers & Land Surveyors

1324 N. Hearne Ave., Ste 301 Phone : (318) 686-7190
Shreveport, Louisiana 71107 Fax : (318) 402-4400



PARKING SPACES 1-10 ARE TO BE ACCESSIBLE DURING BUSINESS HOURS AND ARE FOR CUSTOMER PARKING ONLY. GATE MUST REMAIN OPEN DURING BUSINESS HOURS.

SITE IS LOCATED ENTIRELY WITHIN A FLOOD ZONE "AH" PER FEMA FIRM MAP 22017C0478H DATED MAY 19, 2014 BFE=208.00

EXISTING ZONING: C-3

OWNERSHIP:
70th Street TATA, Inc.
Monir Hossain, President
911 West 70th Street,
Shreveport, La. 71106
LOT 1 ROSALINE SUBD. UNIT 3

PARKING REQUIREMENTS
PARKING REQUIRED: 10 SPACES
PARKING PROVIDED: 10 SPACES
TYPICAL SIZE: 9' WIDE x 18' LONG

EXECUTIVE DIRECTOR APPROVAL

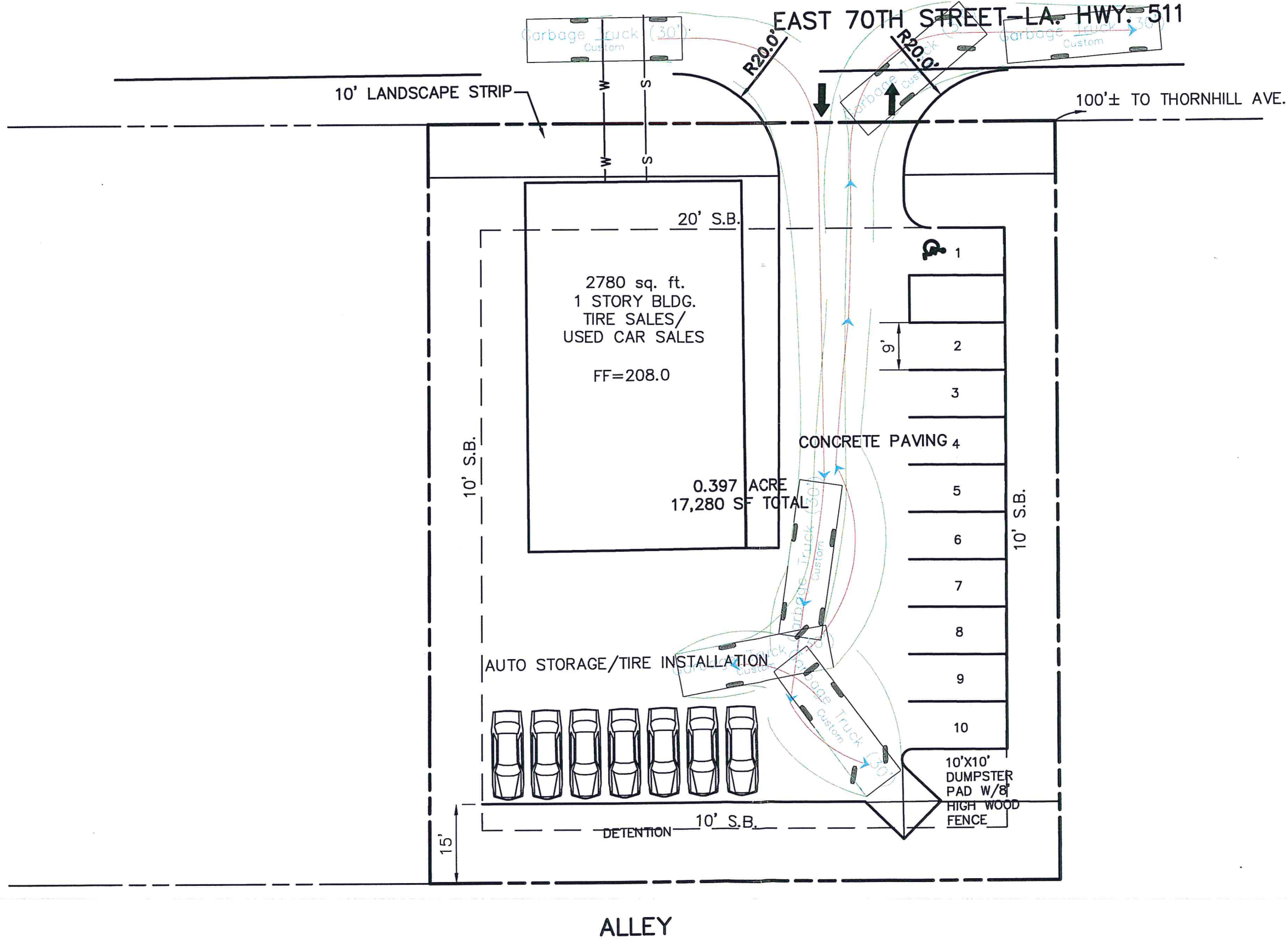
APPROVED: *[Signature]*
Date: 12/21/17 By: MPC Executive Director

RECEIVED

NOV 9 2017

Metroplan Planning Commission

70th Street Tire/Car Sales



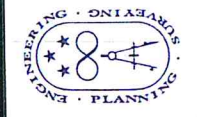
PROPOSED

Date	Sep. 19, 2017
Scale	SHOWN
Drawn	DGray
Job	36538

FOR: Hossain Monir East 70th
GARBAGE TRUCK PATH PLANNER

OCT 24 2017

Mohr and Associates, Inc.
Consulting Civil Engineers & Land Surveyors
1324 N. Hearne Ave., Ste 301 Phone: (318) 686-7190
Shreveport, Louisiana 71107 Fax: (318) 402-4400



NOTE: OVERHEAD LINES
ON NORTH SIDE

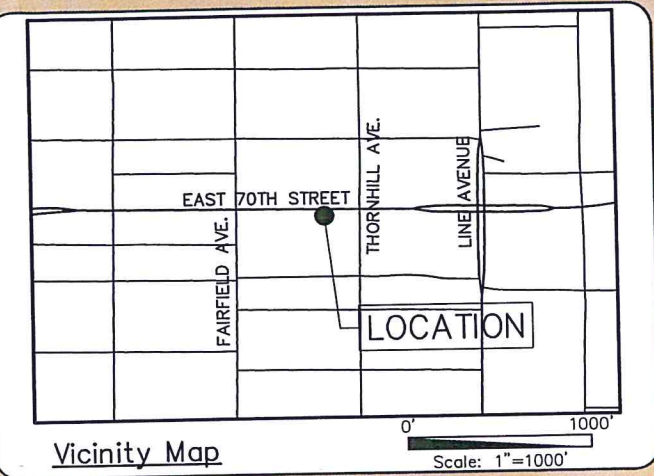
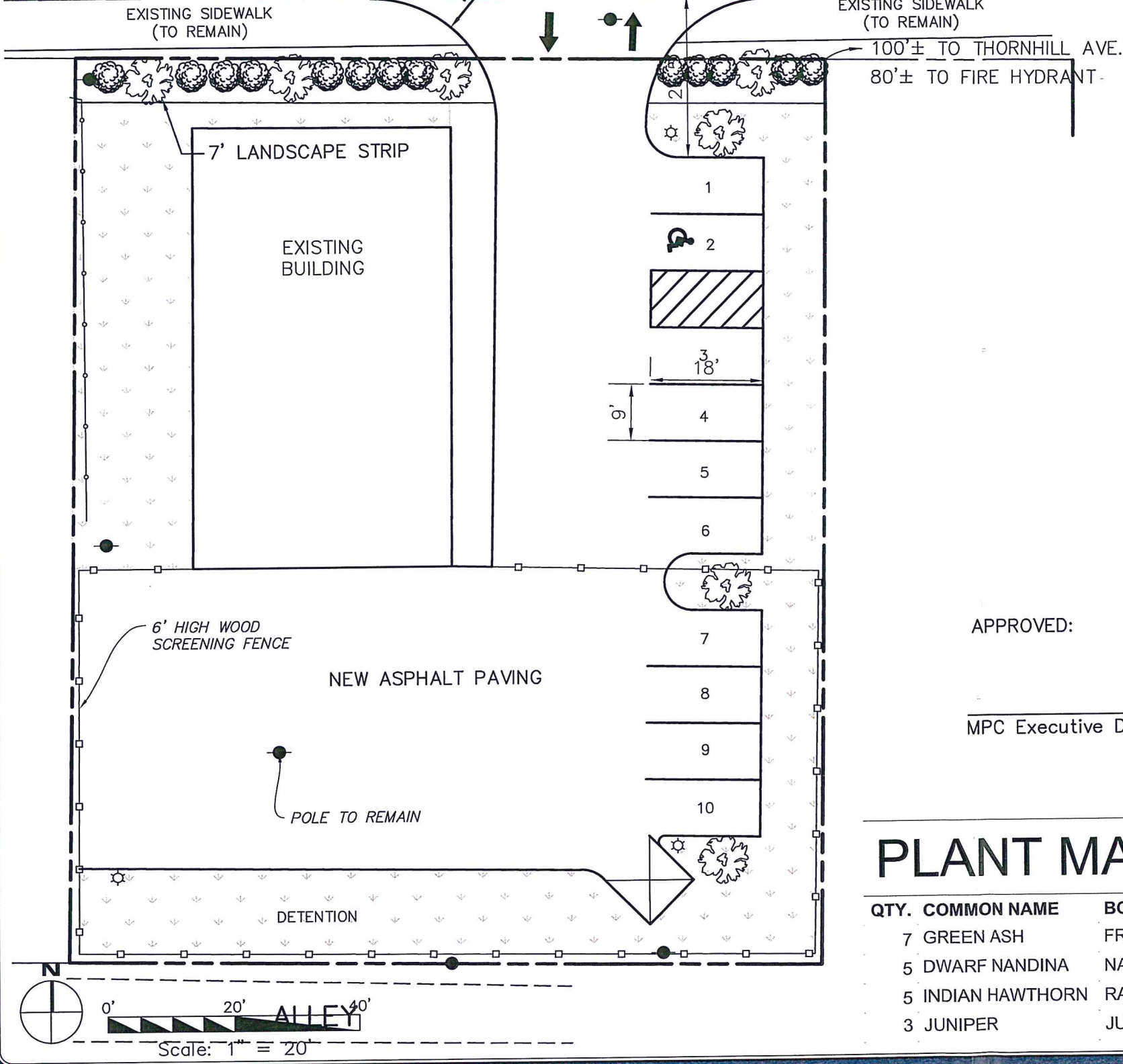
EAST 70TH STREET—LA. HWY. 511



Mohr and Associates, Inc.

Consulting Civil Engineers & Land Surveyors

1324 N. Hearne Ave., Ste 301 Phone : (318) 686-7190
Shreveport, Louisiana 71107 Fax : (318) 402-4400



LANDSCAPING LEGEND

- LARGE SHADE TREE—GREEN ASH
- SHRUB—SEE BELOW FOR TYPE
- ST. AUGUSTINE SOD
- INTERIOR LANDSCAPE PLANTING AREA AND LANDSCAPE STRIP CONSISTS OF LIGUSTRUM, ROSES, DAY LILY ST. AUGUSTINE GRASS SOD

LANDSCAPING REQUIREMENTS

- FRONTAGE LANDSCAPING**
 SHADE TREES REQUIRED: 4
 SHADE TREES PROVIDED: 4
 SHRUBS REQUIRED & PROVIDED: 13
 (DWARF NANDINA-5, INDIAN HAWTHORNE-5, JUNIPER-3)
- INTERIOR LANDSCAPING**
 REQUIRED: 814 SQ.FT.
 PROVIDED: 829 SQ. FT.
- LARGE SHADE TREES REQUIRED: 3
 LARGE SHADE TREES PROVIDED: 3

APPROVED:

MPC Executive Director Date

PLANT MATERIALS LIST

QTY.	COMMON NAME	BOTANICAL NAME	SIZE
7	GREEN ASH	FRAXINUS PENNSYLVANICA	2" CAL.
5	DWARF NANDINA	NANDINA DOMESTICA 'COMPACTA'	3 GAL.
5	INDIAN HAWTHORN	RAPHIOLEPIS INDICA	3 GAL.
3	JUNIPER	JUNIPERUS SPP.	3 GAL.

RECEIVED
NOV 26 2017

Metropolitan Planning
Commission

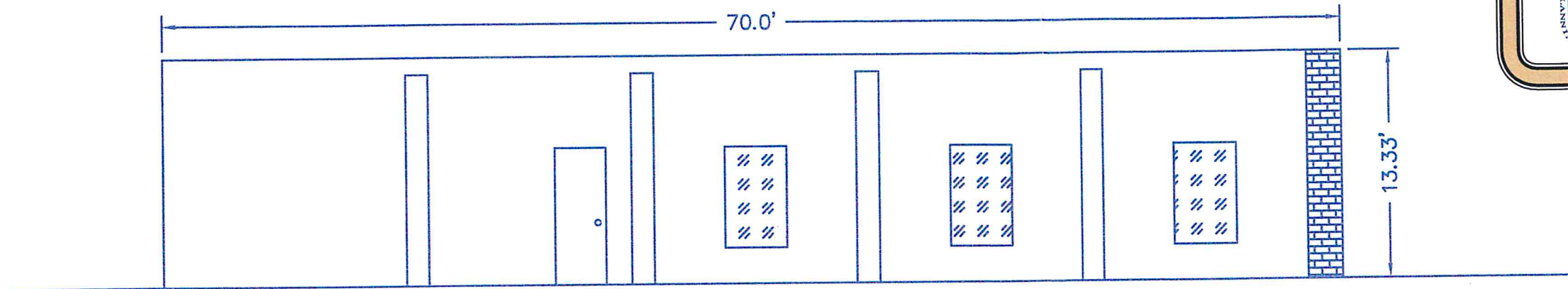
70th Street Tire/Car Sales



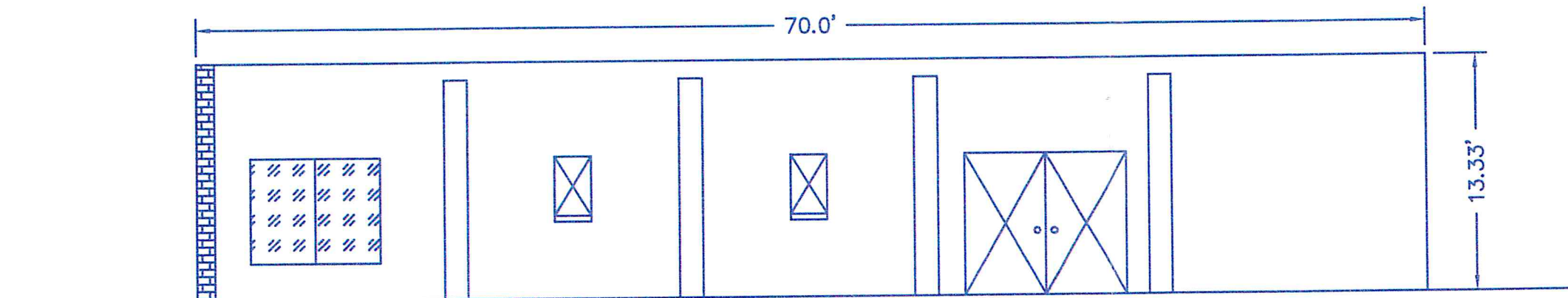
Mohr and Associates, Inc.

Consulting Civil Engineers & Land Surveyors

1324 N. Hearne Ave., Ste 301 Phone : (318) 686-7190
Shreveport, Louisiana 71107 Fax : (318) 402-4400

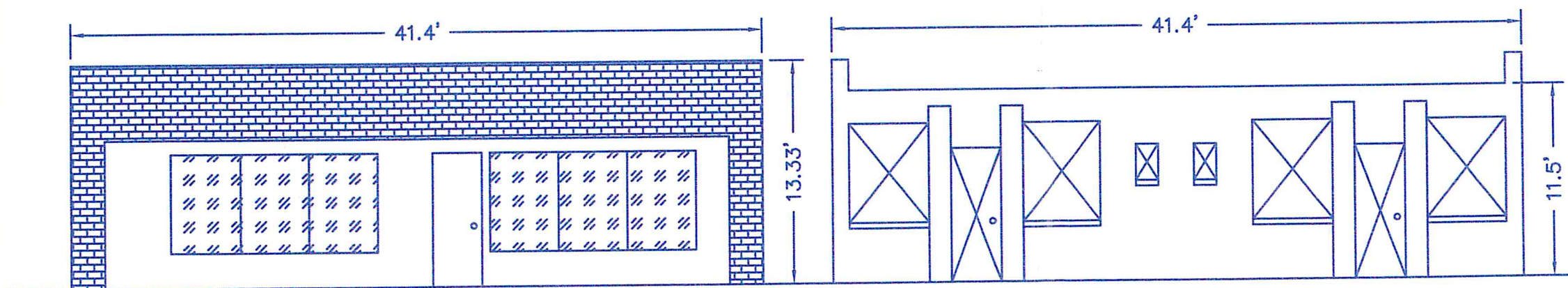


EAST SIDE



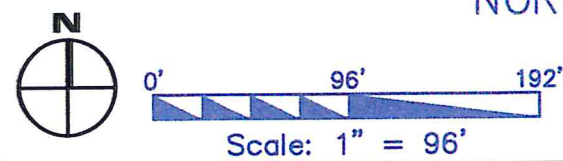
WEST SIDE

SCALE: 1/8" = 1'-0"



NORTH SIDE

SOUTH SIDE



NOTE: THIS IS AN EXISTING BUILDING
THAT IS TO BE REPAIRED AND PAINTED WHITE



Vicinity Map

OWNERSHIP:
70th Street TATA, Inc.
Monir Hossain, President
911 West 70th Street,
Shreveport, La. 71106
LOT 12 ROSALINE SUBDIVISION UNIT 2

RECEIVED
OCT 24 2017

Metropolitan Planning
Commission