

INDEX TO SHEETS

SHEET NO.	DESCRIPTION
1	TITLE SHEET AND GENERAL NOTES
2	PROPOSED SPRAY PARK PAVING AND UTILITIES
3	SPRAY PARK COMPONENT PLAN
4	PAVING DETAILS
5	UTILITY DETAILS
TOTAL : 5 SHEETS	

CITY OF SHREVEPORT, LOUISIANA

PUBLIC ASSEMBLY AND RECREATION

PLANS OF PROPOSED PROJECT

A. B. PALMER PARK SPRAY PARK

547 E. 79th STREET

IFB NO 17 - 027

FEBRUARY, 2017

GENERAL NOTES

- CONTRACTOR MUST HAVE ALL UTILITY OWNERS FIELD-LOCATE THEIR EQUIPMENT AND FACILITIES PRIOR TO CONSTRUCTION. THE CITY OF SHREVEPORT AND THE ENGINEER ASSUME NO LIABILITY FOR DISCREPANCIES BETWEEN UTILITY LINES SHOWN ON THE PLANS AND THEIR ACTUAL LOCATION. CONTRACTOR MUST CALL "LOUISIANA ONE CALL" AT (800) 272-3020 AND UTILITY COMPANY.
- UNDERGROUND UTILITIES HAVE BEEN PLOTTED FROM AVAILABLE INFORMATION AND THEREFORE THEIR LOCATIONS MUST BE CONSIDERED APPROXIMATE ONLY. THE VERIFICATION OF THE LOCATION OF ALL UNDERGROUND UTILITIES, EITHER SHOWN OR NOT SHOWN ON THESE PLANS, SHALL BE THE RESPONSIBILITY OF THE CONTRACTOR AND SHALL BE LOCATED PRIOR TO EXCAVATION, GRADING, OR CONSTRUCTION.
- THE CONTRACTOR SHALL PERSONALLY INSPECT THE PREMISES TO DETERMINE THE CONDITIONS UNDER WHICH THE WORK IS TO BE DONE AND THE KIND AND AMOUNT OF MATERIALS TO BE REMOVED. THE CONTRACTOR WILL ACCEPT THE PREMISES AS FOUND.
- CONTRACTOR SHALL THOROUGHLY REVIEW ALL PLANS AND SPECIFICATIONS. SHALL PREPARE DETAILED MATERIAL QUANTITIES AND COSTS ACCORDINGLY BEFORE SUBMITTING HIS BID. ANY WORK, CONSTRUCTION MATERIALS, FITTINGS, AND APPURTENANCES REQUIRED BY THE PLANS AND SPECIFICATIONS AND NOT OTHERWISE IDENTIFIED AS A PAY ITEM OR A MATERIAL TAKE-OFF ITEM, SHALL BE DEEMED INCIDENTAL TO CONSTRUCTION AND SHALL BE PERFORMED, SUPPLIED AND INSTALLED AT NO ADDITIONAL PAY.
- THE CONTRACTOR SHALL PERFORM ALL WORK REQUIRED TO PROTECT THE EXISTING GROUNDS, PARKING AREA, STREETS, SIDEWALKS, CURBS, ETC. FROM DAMAGE.
- CONTRACTOR SHALL OBTAIN AND PAY FOR ALL PERMITS WHICH MAY BE REQUIRED FOR THIS PROJECT.
- CONTRACTOR MUST USE BEST MANAGEMENT PRACTICES TO CONTAIN STORM WATER RUNOFF FROM THE CONSTRUCTION SITE. EROSION CONTROL PROTECTION BARRIERS (SILT FENCES, HAY BALES, CHECK DAMS, SILTING BASINS, OR A COMBINATION THEREOF) MUST COMPLY WITH EPA AND LOUISIANA DEQ STORM WATER REGULATIONS AND MUST BE INSTALLED PRIOR TO REMOVAL OF VEGETATION AND EXCAVATION.
- THE CONTRACTOR SHALL BE RESPONSIBLE FOR RESTORING ALL DISTURBED AREAS TO AN EQUAL OR BETTER CONDITION THAN THE EXISTING GROUND COVER PRIOR TO CONSTRUCTION. THE LAWN PLANTING SHALL BE REPLACED (IN KIND) WITH SOD AND WILL BE PAID UPON ESTABLISHMENT OF AN ADEQUATE STAND OF PERMANENT GROUND COVER. LANDSCAPE TREES AND SHRUBS AND ORNAMENTAL BUSHES DISTURBED WITHIN THE CONSTRUCTION AREA SHALL BE REPLACED IN KIND AT NO DIRECT PAY.
- CONCRETE PAVEMENT AND SIDEWALKS SHALL BE REMOVED TO THE NEAREST EXISTING JOINT LINES. IF THE NEAREST SIDEWALK JOINT IS A SCORED JOINT, A SAW CUT SHALL BE REQUIRED AT THE JOINT TO INSURE A CLEAN BREAK, AND AT NO DIRECT PAY.
- TEMPORARY SAFETY FENCING SHALL BE ERECTED AS NEEDED AT NO DIRECT PAY. PERIMETER FENCING SHALL BE MAINTAINED TO THE GREATEST EXTENT PRACTICABLE TO MAINTAIN SECURITY OF THE AREA AT NO DIRECT PAY.



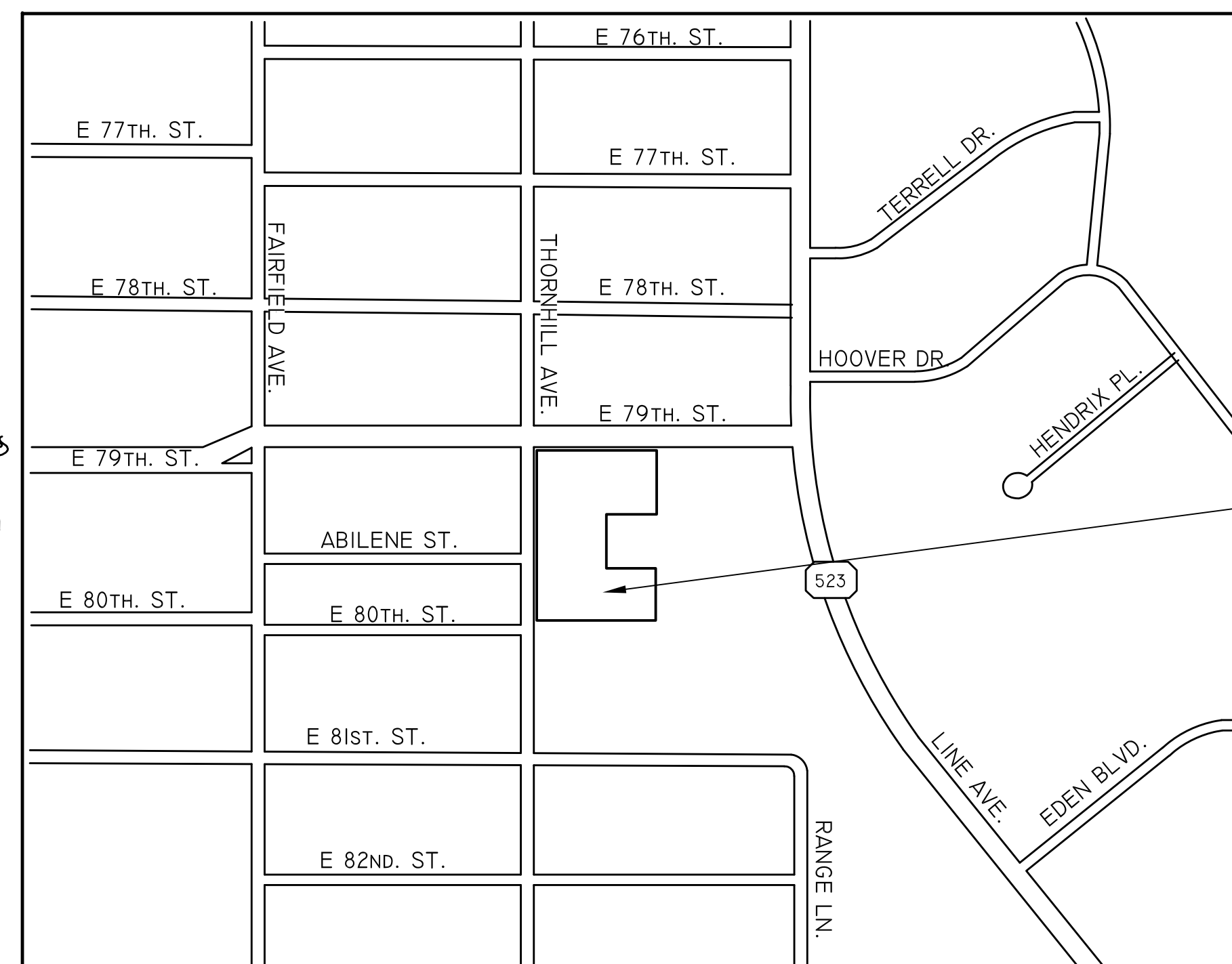
PROJECT LOCATION VICINITY MAP

OLLIE S. TYLER
MAYOR, CITY OF SHREVEPORT

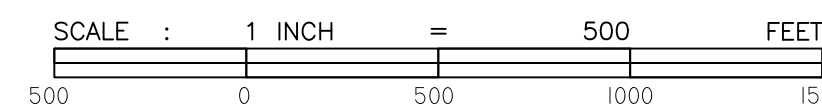
SHELLY RAGLE
DIRECTOR OF PUBLIC ASSEMBLY AND RECREATION

RUSSELL DELANCY
CITY ARCHITECT
SHREVEPORT PUBLIC ASSEMBLY AND RECREATION

CITY COUNCIL :
WILLIE BRADFORD, JR. - DISTRICT A
JEFF EVERSON - DISTRICT B
OLIVER JENKINS - DISTRICT C
MICHAEL CORBIN - DISTRICT D
JAMES FLURRY - DISTRICT E
STEPHANIE LYNCH - DISTRICT F
JERRY BOWMAN - DISTRICT G



PROJECT SITE



LAYOUT MAP

SCHEDULE OF REVISIONS

DATE	RECOMMENDED	DATE	REVISION	DATE	APPROVED

TYPE OF CONSTRUCTION :

REINFORCED CONCRETE WATER PLAY FACILITY

NOTE :
CITY OF SHREVEPORT STANDARD SPECIFICATIONS AND STANDARD PLANS FOR INFRASTRUCTURE IMPROVEMENTS, 2015 EDITION, INCLUDING ALL AMENDMENTS, SHALL GOVERN THIS PROJECT.

PLANS PREPARED BY:

OWEN ENGINEERING, LLC
900 Market St., Suite 201
Shreveport, LA 71101
(318) 828-1126

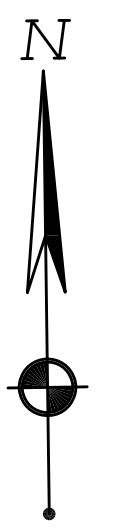
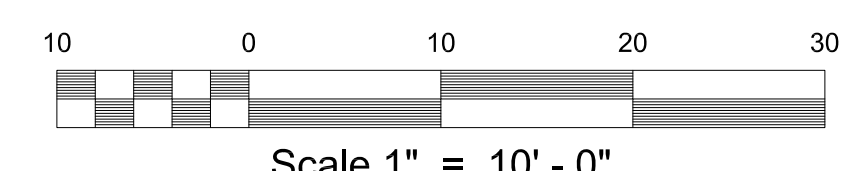
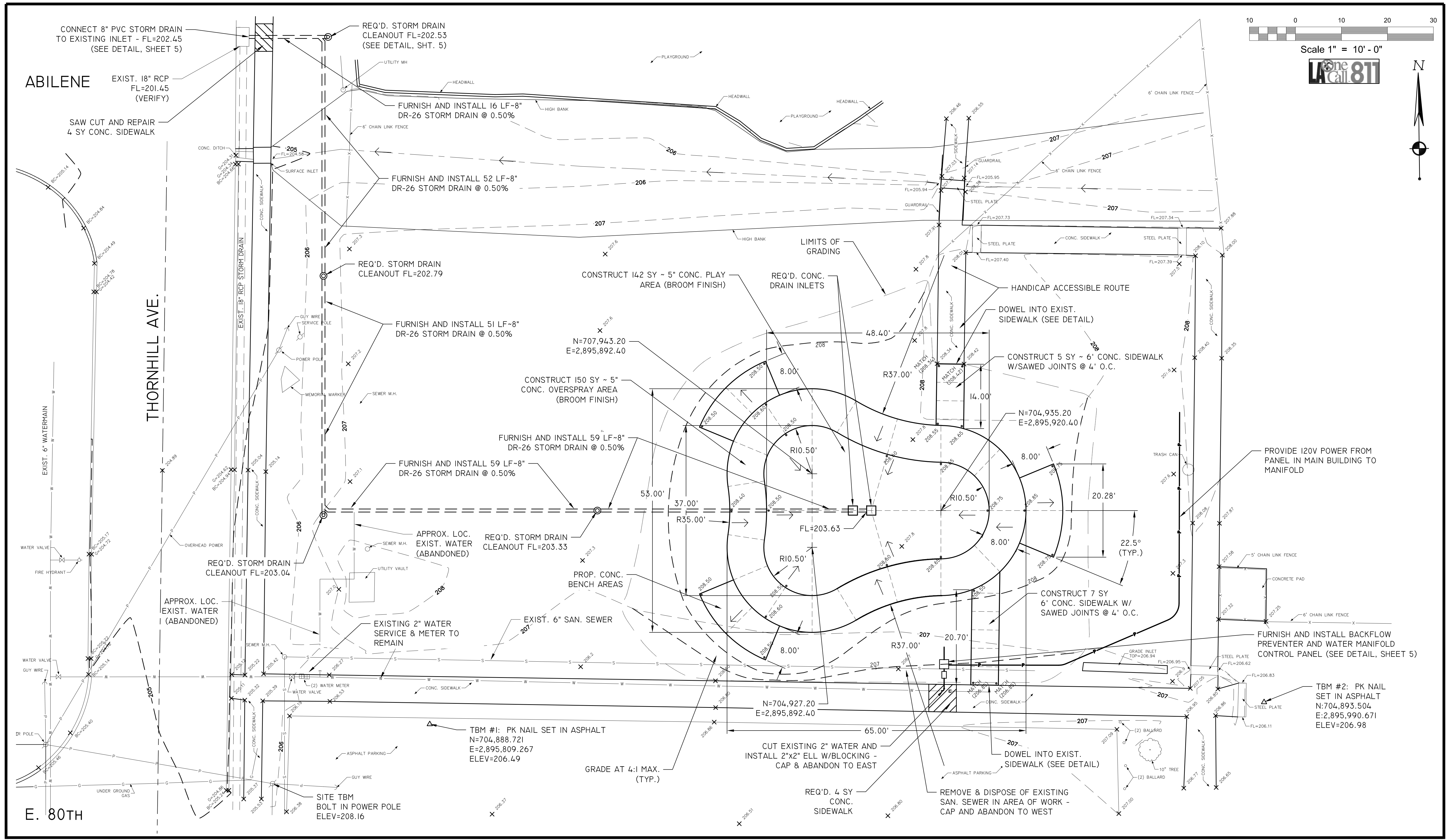


[Signature]
02-02-2017

MARK E. OWEN, P.E.
OWEN ENGINEERING, LLC

CONTRACTOR TO CALL LOUISIANA ONE-CALL AT 1-800-272-3020 AND DOWAS AT 318-673-7600 FOR LOCATION OF ALL UNDERGROUND UTILITIES PRIOR TO COMMENCEMENT OF CONSTRUCTION.





Date	Revision	By

Designed	
Checked	
Drawn	
Approved	

OWEN ENGINEERING, LLC
 900 Market St., Suite 201
 Shreveport, LA 71101
 (318) 828-1126

A B PALMER PARK SPRAY PARK
 547 E. 79TH ST., SHREVEPORT, LA
 SHREVEPORT PUBLIC ASSEMBLY AND RECREATION DEPARTMENT

PROPOSED SPRAY PARK PAVING AND UTILITIES

Job No.: 2016-28
 Scale: 1" = 10'
 Date: FEB. 2, 2017
 Sheet 2 of 5

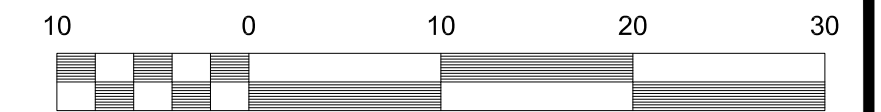
STATE OF LOUISIANA
 MARK ENOS OWEN
 License No. 28092
 PROFESSIONAL ENGINEER

ABILENE

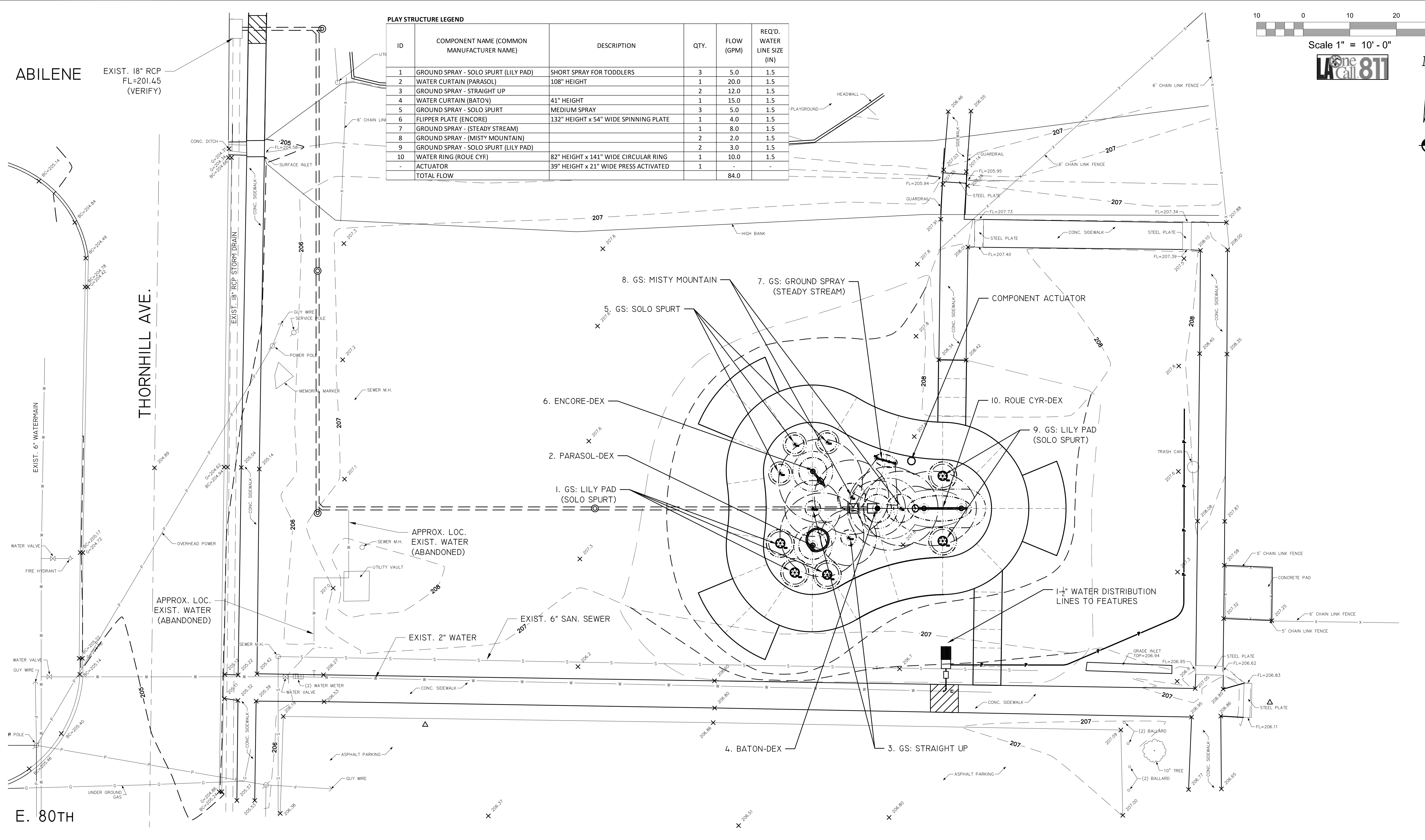
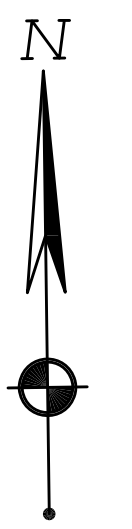
EXIST. 18" RCP
FL=201.45
(VERIFY)

PLAY STRUCTURE LEGEND

ID	COMPONENT NAME (COMMON MANUFACTURER NAME)	DESCRIPTION	QTY.	FLOW (GPM)	REQ'D. WATER LINE SIZE (IN)
1	GROUND SPRAY - SOLO SPURT (LILY PAD)	SHORT SPRAY FOR TODDLERS	3	5.0	1.5
2	WATER CURTAIN (PARASOL)	108" HEIGHT	1	20.0	1.5
3	GROUND SPRAY - STRAIGHT UP		2	12.0	1.5
4	WATER CURTAIN (BATON)	41" HEIGHT	1	15.0	1.5
5	GROUND SPRAY - SOLO SPURT	MEDIUM SPRAY	3	5.0	1.5
6	FLIPPER PLATE (ENCORE)	132" HEIGHT x 54" WIDE SPINNING PLATE	1	4.0	1.5
7	GROUND SPRAY - (STEADY STREAM)		1	8.0	1.5
8	GROUND SPRAY - (MISTY MOUNTAIN)		2	2.0	1.5
9	GROUND SPRAY - SOLO SPURT (LILY PAD)		2	3.0	1.5
10	WATER RING (ROUE CYR)	82" HEIGHT x 141" WIDE CIRCULAR RING	1	10.0	1.5
-	ACTUATOR	39" HEIGHT x 21" WIDE PRESS ACTIVATED	1	-	-
TOTAL FLOW				84.0	



Scale 1" = 10' - 0"



E. 80TH

THORNHILL AVE.

Date	Revision	By

Designed _____
 Checked _____
 Drawn _____
 Approved _____

OWEN ENGINEERING, LLC
 900 Market St., Suite 201
 Shreveport, LA 71101
 (318) 828-1126

A B PALMER PARK SPRAY PARK
 547 E. 79TH ST., SHREVEPORT, LA
 SHREVEPORT PUBLIC ASSEMBLY AND
 RECREATION DEPARTMENT

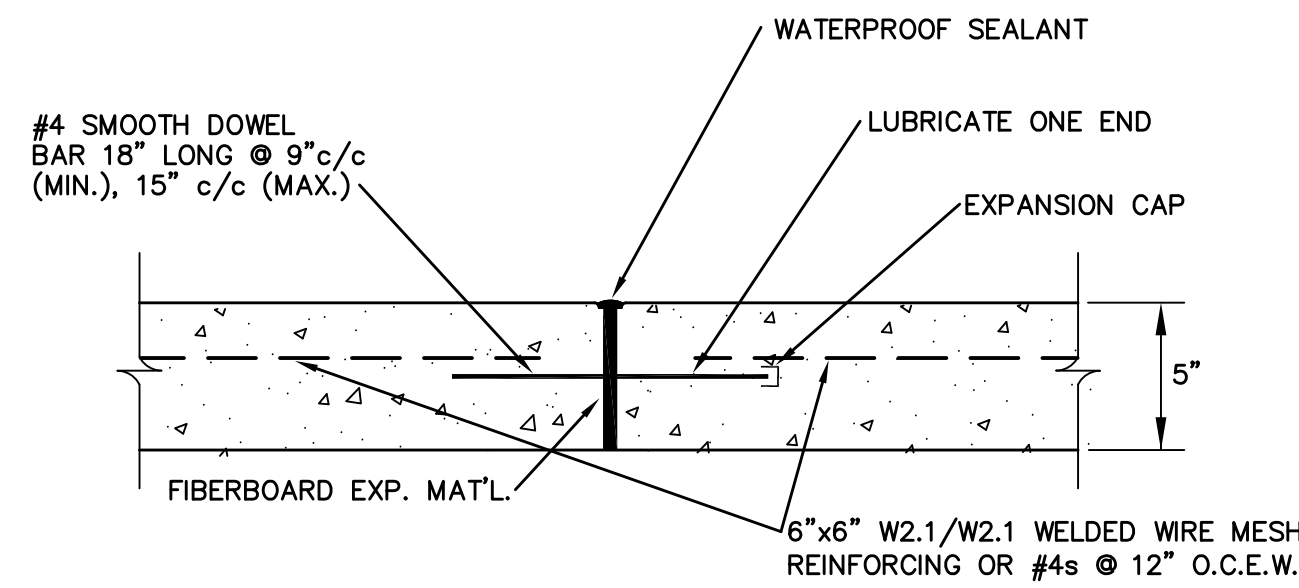
**SPRAY PARK
 COMPONENT PLAN**

STATE OF LOUISIANA
 MARK ENOS OWEN
 License No. 28092
 PROFESSIONAL ENGINEER

Job No.: 2016-28
 Scale: 1" = 10'
 Date: FEB. 2, 2017
 Sheet 3 of 5

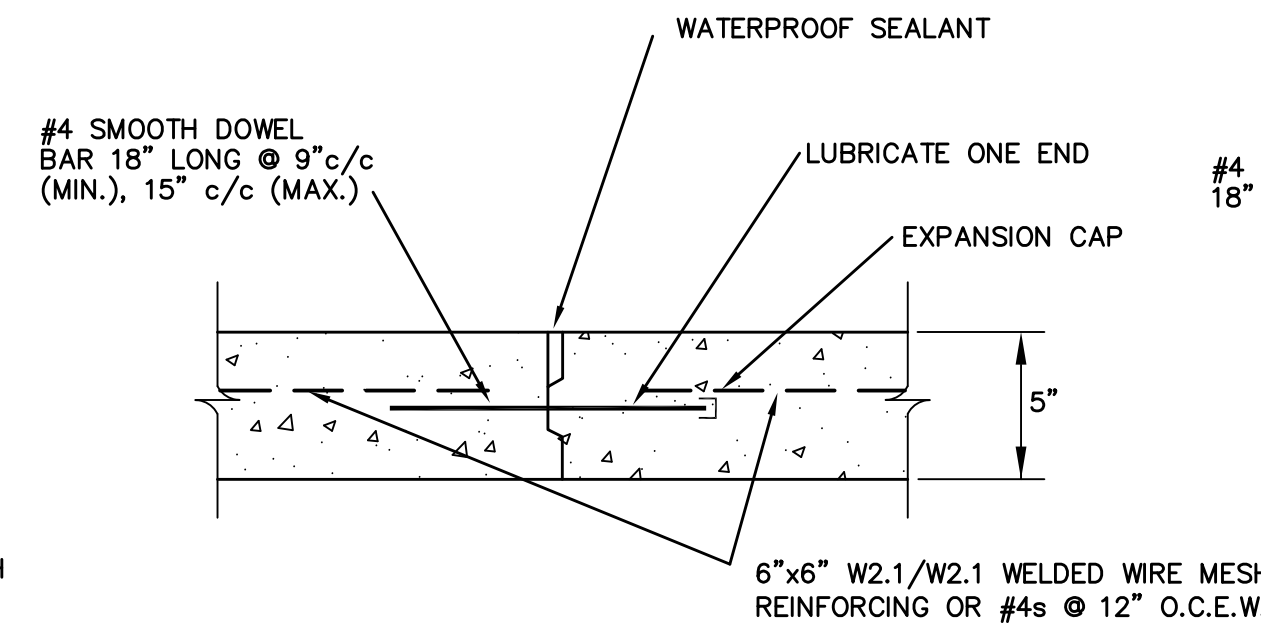
CONCRETE PAVING NOTES

1. CONCRETE SHALL BE PORTLAND CEMENT CONCRETE, SHREVEPORT PAVEMENT CLASS B, 3,600 PSI COMPRESSIVE STRENGTH AT 28 DAYS (AIR ENTRAINED).
2. CAST-IN-PLACE CONCRETE SHALL STRICTLY ADHERE TO THE PROPORTIONS ESTABLISHED IN THE MIX, CONSISTING OF THE ACTUAL MATERIALS TO BE USED DURING CONSTRUCTION. DESIGN MIX SHALL BE PREPARED AND SUBMITTED TO THE ENGINEER FOR REVIEW PRIOR TO USE. MIX DESIGN PROPORTIONS SHALL BE IN ACCORDANCE WITH ACI 211 / 301 / 318.
3. REINFORCED CONCRETE SHALL CONFORM TO ACI 318, LATEST EDITION.
4. REINFORCING BARS SHALL BE ASTM A 615 GRADE 60, EXCEPT TIES AND STIRRUPS MAY BE GRADE 40. WELDED WIRE FABRIC SHALL CONFORM TO ASTM A-185 AND SHALL BE SUPPLIED IN FLAT SHEETS. LAP FABRIC TWO MESHES AS SPLICED.
5. REQUIRED CONCRETE COVER FOR REINFORCING BARS:
DEPOSITED AGAINST EARTH: 3"
EXPOSED TO WEATHER OR EARTH AFTER FORMS REMOVED: 1-1/2".
6. AS SOON AS FORMS ARE REMOVED, UNDESIRABLE FINS AND OTHER PROJECTIONS SHALL BE REMOVED, OFFSETS LEVELED, AND VOID OR DAMAGED PLACES IMMEDIATELY SATURATED WITH WATER AND PREPARED WITH MORTAR OF THE SAME COMPOSITION AS USED IN THE MIX. EXPOSED SURFACES SHALL BE RUBBED WITH CARBORUNDUM STONE TO A SMOOTH FINISH FREE FROM FORM MARKS OR HONEYCOMBS IMMEDIATELY AFTER FORMS ARE REMOVED.
7. TESTING LABORATORY SERVICES FOR QUALITY CONTROL OF CAST-IN-PLACE CONCRETE SHALL BE PROVIDED BY THE OWNER. TESTING SERVICES SHALL INCLUDE PREPARATION AND TESTING OF CONCRETE COMPRESSION CYLINDERS AND SLUMP TESTS AS DIRECTED BY THE PROJECT REPRESENTATIVE.
8. CONCRETE SHALL BE PLACED CONTINUOUSLY, WITHOUT INTERRUPTION, IN SUCH A MANNER AS TO NOT CAUSE SEGREGATION, VIBRATING EACH LIFT. USE CHUTES OR TREMIE FOR PLACING CONCRETE WHERE A DROP OF MORE THAN FIVE FEET IS REQUIRED, OR PUMP CONCRETE INTO PLACE.
9. DOWELS MUST BE ADEQUATELY SUPPORTED TO PREVENT DISLOCATION.
10. CONTRACTOR MUST SUPPORT STEEL REINFORCING WITH CHAIRS OR OTHER SUITABLE MATERIALS.



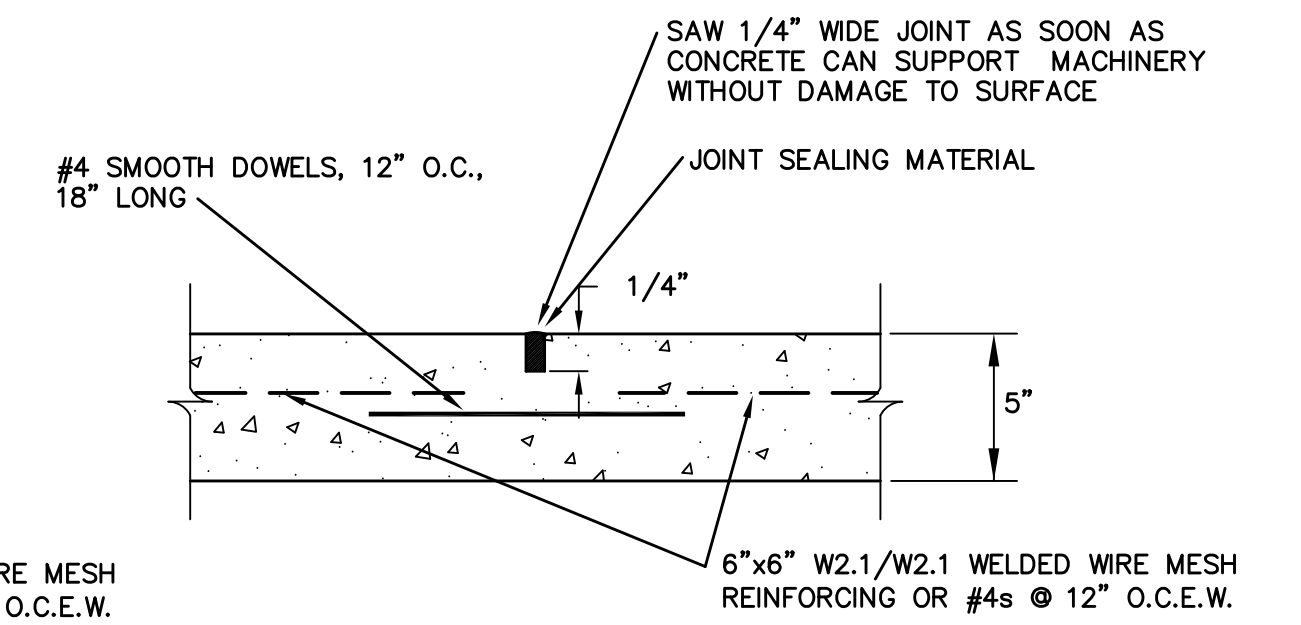
EXPANSION JOINT

NOT TO SCALE
PROVIDE 4" SAND UNDER SIDEWALK (TYP., NOT SHOWN)



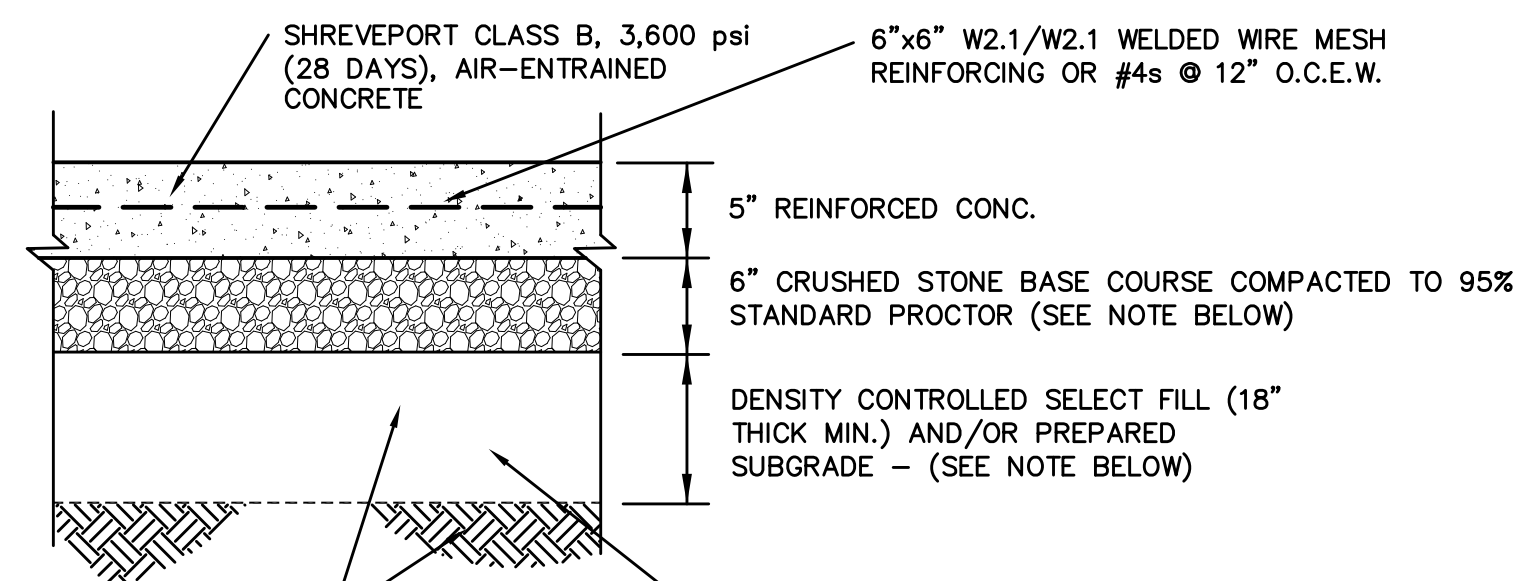
CONSTRUCTION JOINT

NOT TO SCALE
CONSTRUCTION JOINTS TO BE PLACED AT EXPANSION JOINT LOCATIONS OR OTHER LOCATIONS APPROVED BY ENGINEER



SAWN CONTRACTION JOINT

NOT TO SCALE



TYPICAL SECTION (CONCRETE)

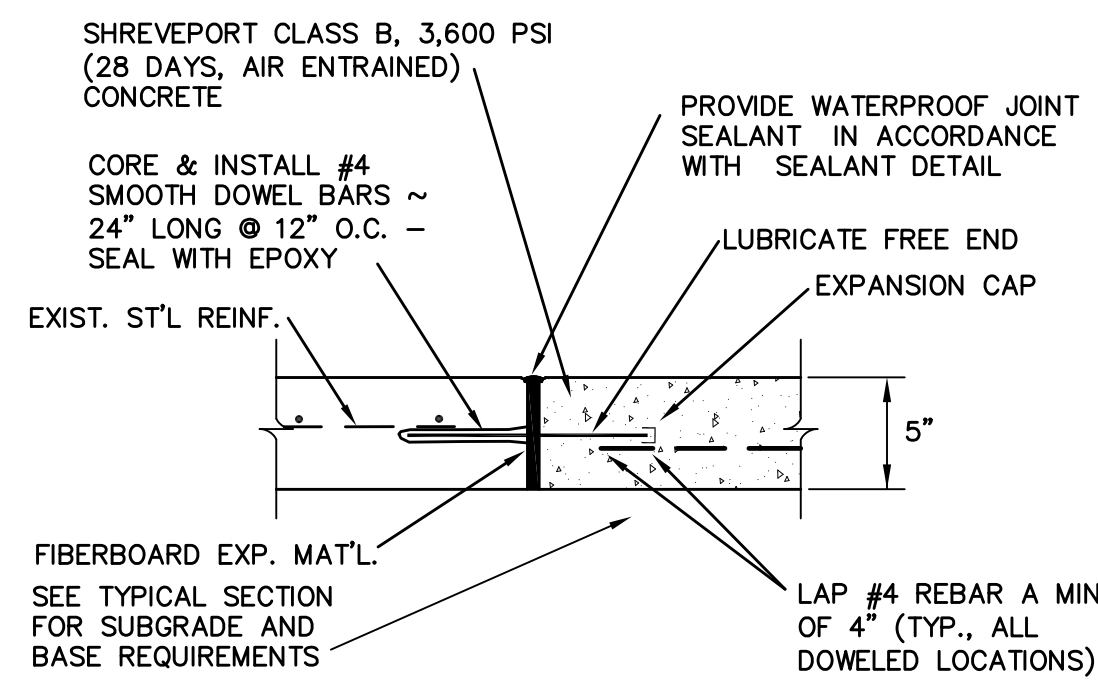
SCALE: 3/4" = 1' - 0"

CRUSHED STONE BASE COURSE SHALL BE COMPOSED OF CRUSHER-RUN BROKEN STONE. THE MATERIAL SHALL BE CRUSHED AND CONSIST OF DURABLE PARTICLES OF STONE MIXED WITH APPROVED SOIL BINDER MATERIAL.

THE BASE MATERIAL SHALL MEET THE FOLLOWING REQUIREMENTS:

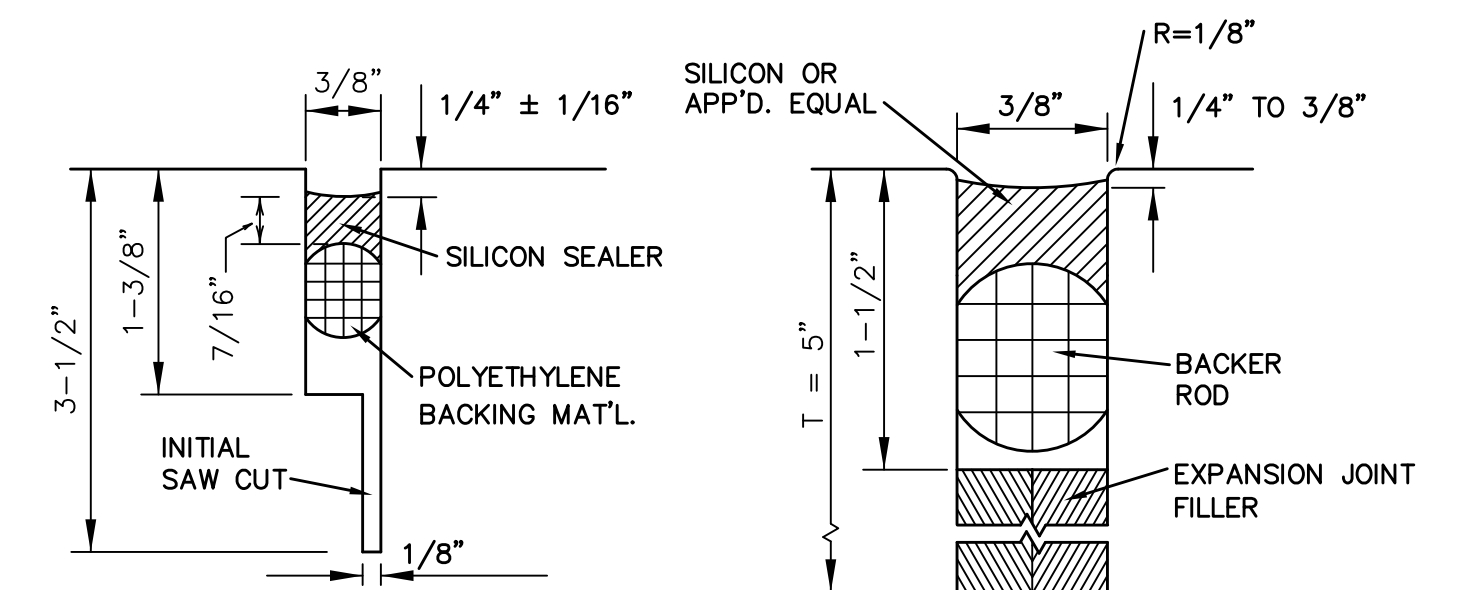
PASS 1-1/2" SIEVE:	100%	PASS #4 SIEVE:	35-65%
PASS 1" SIEVE:	90-100%	PASS #40 SIEVE:	12-32%
PASS 3/4" SIEVE:	70-100%	PASS #200 SIEVE:	5-12%

MATERIAL PASSING THE NO. 40 SIEVE SHALL BE KNOWN AS "SOIL BINDER" AND SHALL HAVE A LIQUID LIMIT LESS THAN 25 AND A PLASTICITY INDEX LESS THAN 5.



TIE IN TO EXISTING CONCRETE

NOT TO SCALE
#3 SMOOTH DOWEL BARS PERMITTED IN SIDEWALK TO SIDEWALK TIE-INS.



JOINT SEAL DETAILS

NOT TO SCALE

Date	Revision	By

Designed	_____
Checked	_____
Drawn	_____
Approved	_____

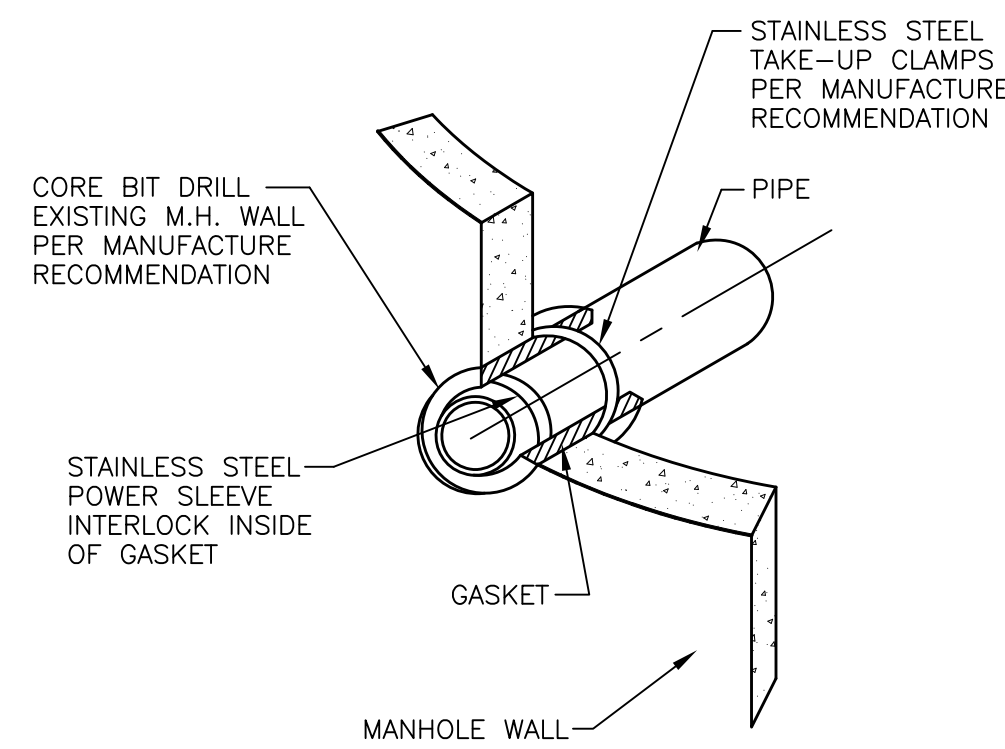
OWEN ENGINEERING, LLC
900 Market St., Suite 201
Shreveport, LA 71101
(318) 828-1126

A B PALMER PARK SPRAY PARK
547 E. 79TH ST., SHREVEPORT, LA
SHREVEPORT PUBLIC ASSEMBLY AND RECREATION DEPARTMENT

PAVING DETAILS

STATE OF LOUISIANA
MARK ENOS OWEN
License No. 28092
PROFESSIONAL ENGINEER

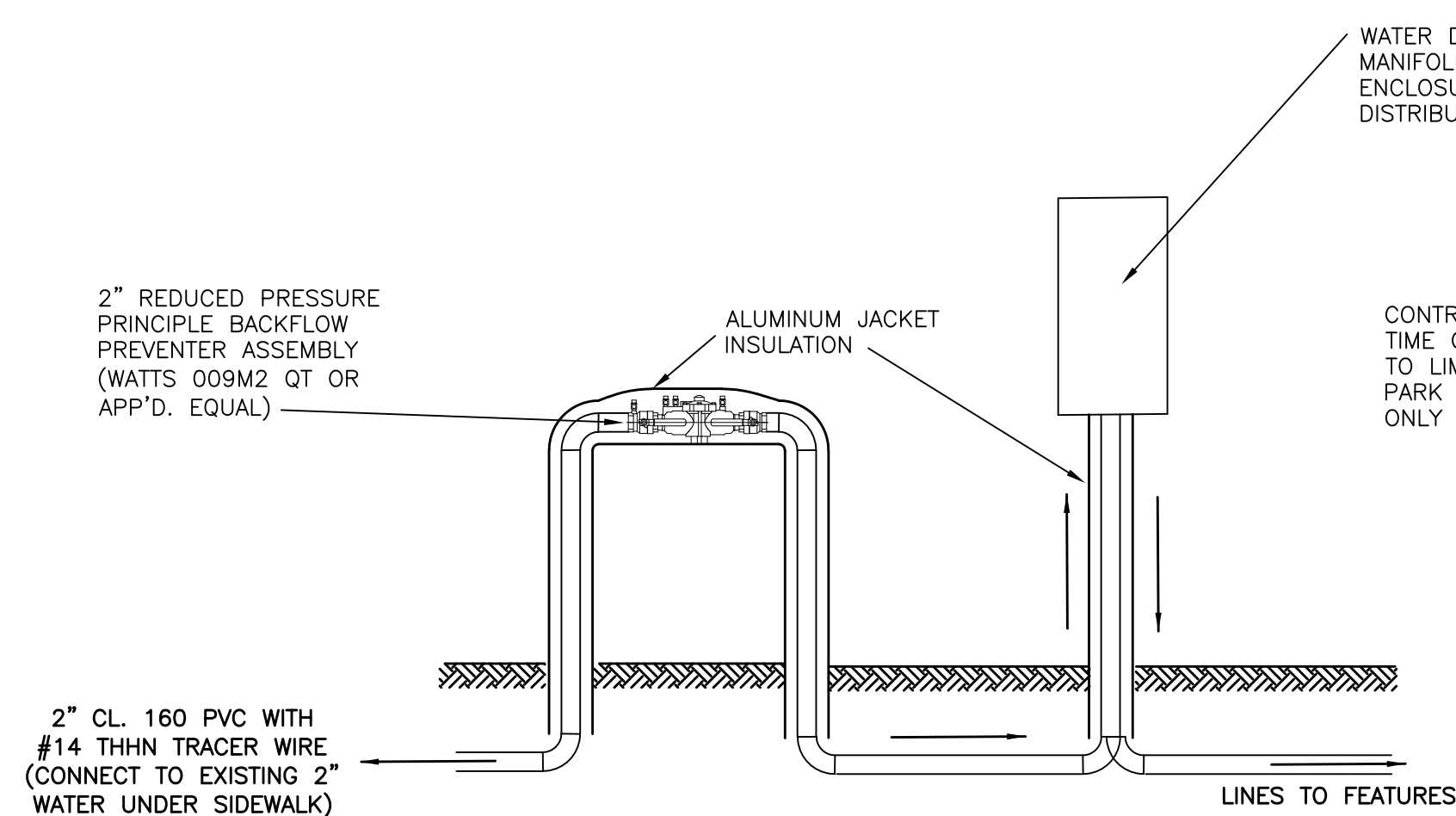
Job No.:	2016-28
Scale:	AS NOTED
Date:	FEB. 2, 2017
Sheet	4 of 5



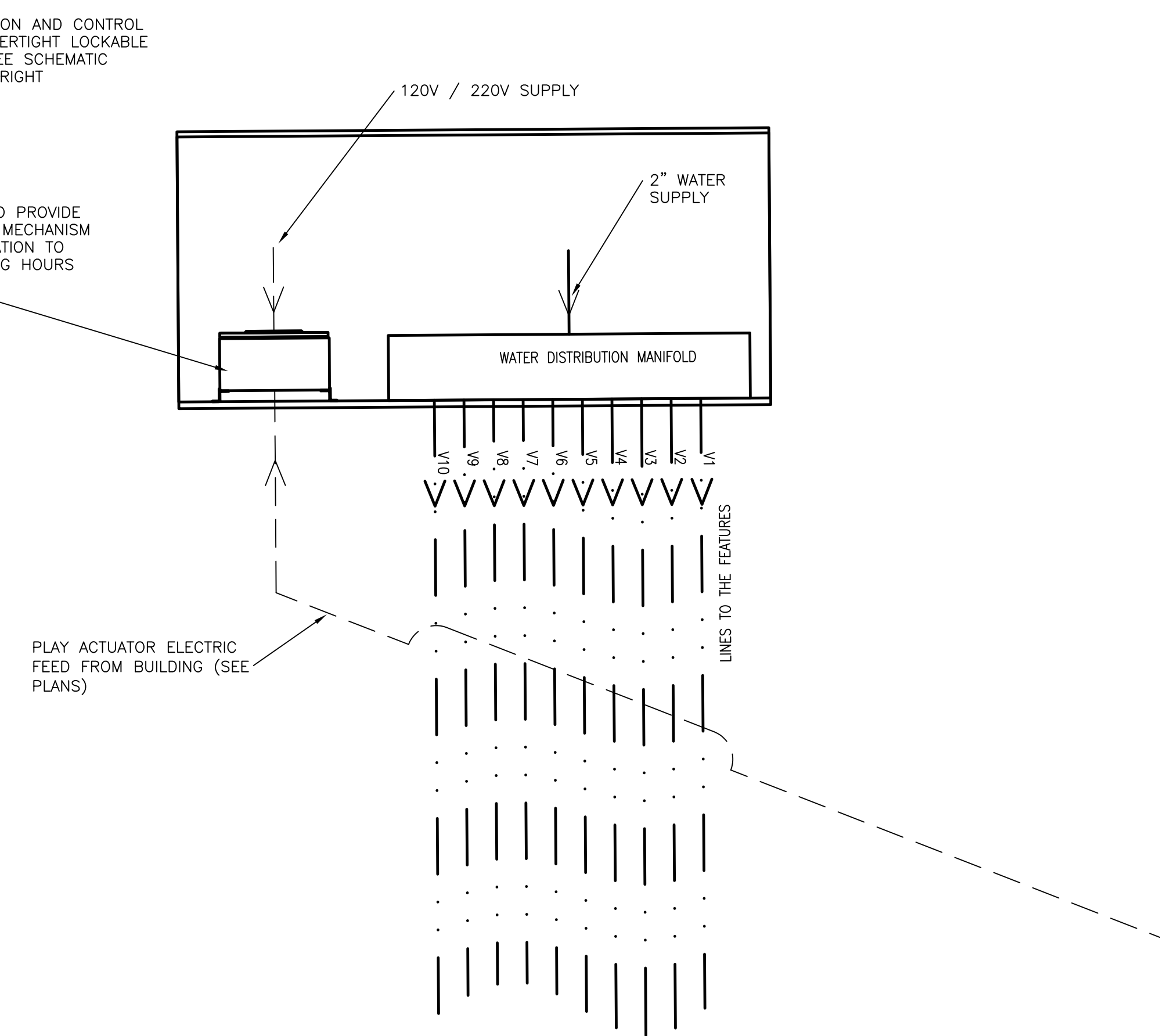
CONNECT TO EXISTING INLET DETAIL
NOT TO SCALE

NOTE:

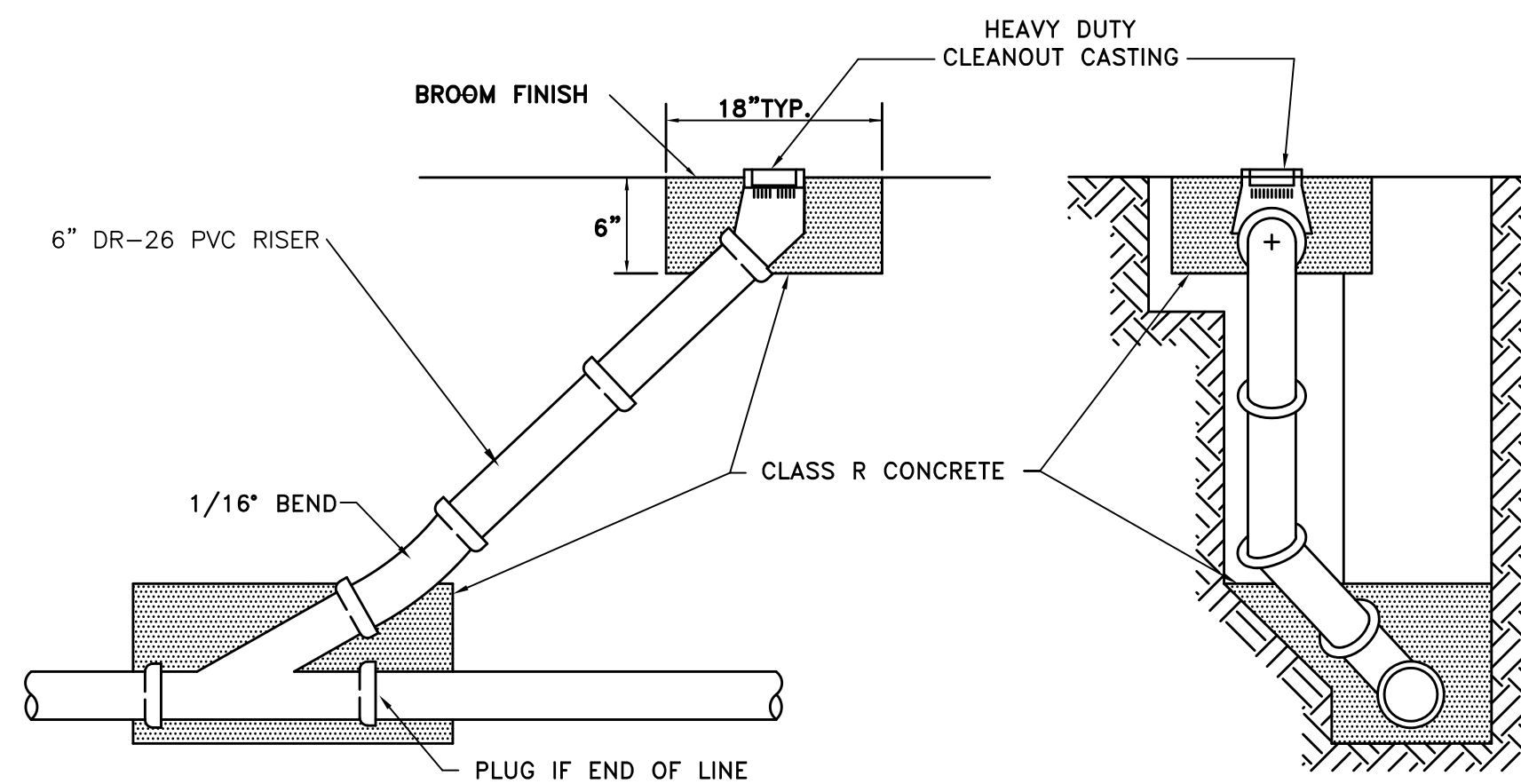
1. USE PRESS SEAL GASKET CORP. PSX RESILIENT CONNECTOR MEETING ASTM C-923 OR APPROVED EQUAL.
2. IF PIPE ENTRANCE IS THROUGH GROUT MATERIAL, REMOVE AND REPLACE ALL GROUT MATERIAL TO OBTAIN A GOOD BOND. USE NON-SHRINK GROUT.
3. WHERE INLET WALL CANNOT BE CORE BID DRILLED ADEQUATELY TO INSURE A RESILIENT CONNECTION WITH PSX RESILIENT CONNECTOR (SUCH AS AT A MANHOLE BASE), INSTALL A 24" LONG PIPE NIPPLE WITH 18" LONG CONCRETE CRADLE IN LIEU OF THE PSX CONNECTOR.



WATER MANIFOLD DETAIL
NOT TO SCALE



WATER MANIFOLD SCHEMATIC
NOT TO SCALE



STORM DRAIN CLEANOUT DETAILS

NOT TO SCALE
ALL PIPING AND FITTINGS TO BE PVC
SDR-26 (SIZE NOTED ON PLANS)

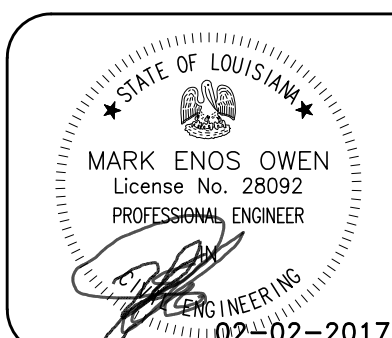
Date	Revision	By

Designed _____
Checked _____
Drawn _____
Approved _____

OWEN
ENGINEERING, LLC
900 Market St., Suite 201
Shreveport, LA 71101
(318) 828-1126

A B PALMER PARK SPRAY PARK
547 E. 79TH ST., SHREVEPORT, LA
SHREVEPORT PUBLIC ASSEMBLY AND RECREATION DEPARTMENT

UTILITY DETAILS



Job No.: 2016-28
Scale: AS NOTED
Date: FEB. 2, 2017
Sheet 5 of 5