

TYPICAL BUILDING  
NOTE: ALL 14 BUILDINGS ARE AS ABOVE

ZONED: R-1-7

PARKING REQUIREMENTS  
PARKING REQUIRED: 156 SPACES  
PARKING PROVIDED: 159 SPACES  
TYPICAL SIZE: 8' WIDE x 12' LONG

BICYCLE SPACES  
REQUIRED: 31 SPACES  
PROVIDED: 36 SPACES  
TYPICAL-4 SPACES

ZONED: R-1-7

PROPOSED CONCRETE PAVEMENT

ZONED: C-2  
LIBRARY ENTRANCE  
171338-017-0055-00

ZONED: C-2  
PARISH OF CADDO-LIBRARY  
171338-017-0057-00

EXECUTIVE DIRECTOR APPROVAL

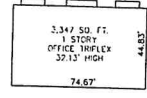
Date: 3/16/18 By: [Signature]  
MPC Executive Director Date

Open 10 yr. storm=4,505 cfs  
Open 25 yr. storm=4,505 cfs

TRACT IS LOCATED IN ZONE "X"  
AS PER FEMA MAP NUMBER 22017C0486H  
EFFECTIVE DATE: MAY 19, 2014.

SECTION 38, T17N-R13W, SHREVEPORT,  
CADDO PARISH, LOUISIANA 3.982 ACRES

DATE	
REVISED	
NO.	
<p><b>Mohr and Associates, Inc.</b> Consulting Civil Engineers &amp; Land Surveyors 1924 N. Hearne Ave., Ste. 301 Phone: (318) 686-7190 Shreveport, Louisiana 71107 Fax: (318) 402-4400</p>	
<p>WINVAL, LLC 9026 WISTERIAN WAY SHREVEPORT, LA 71106 OFFICE: SPRING LAKE OFFICE PARK</p>	
Date	8-10-2017
Scale	1"=30'
Job No.	163566
Drawn	DBA
Sheet	
<p><b>1</b></p>	
<p>of 1 Sheets</p>	

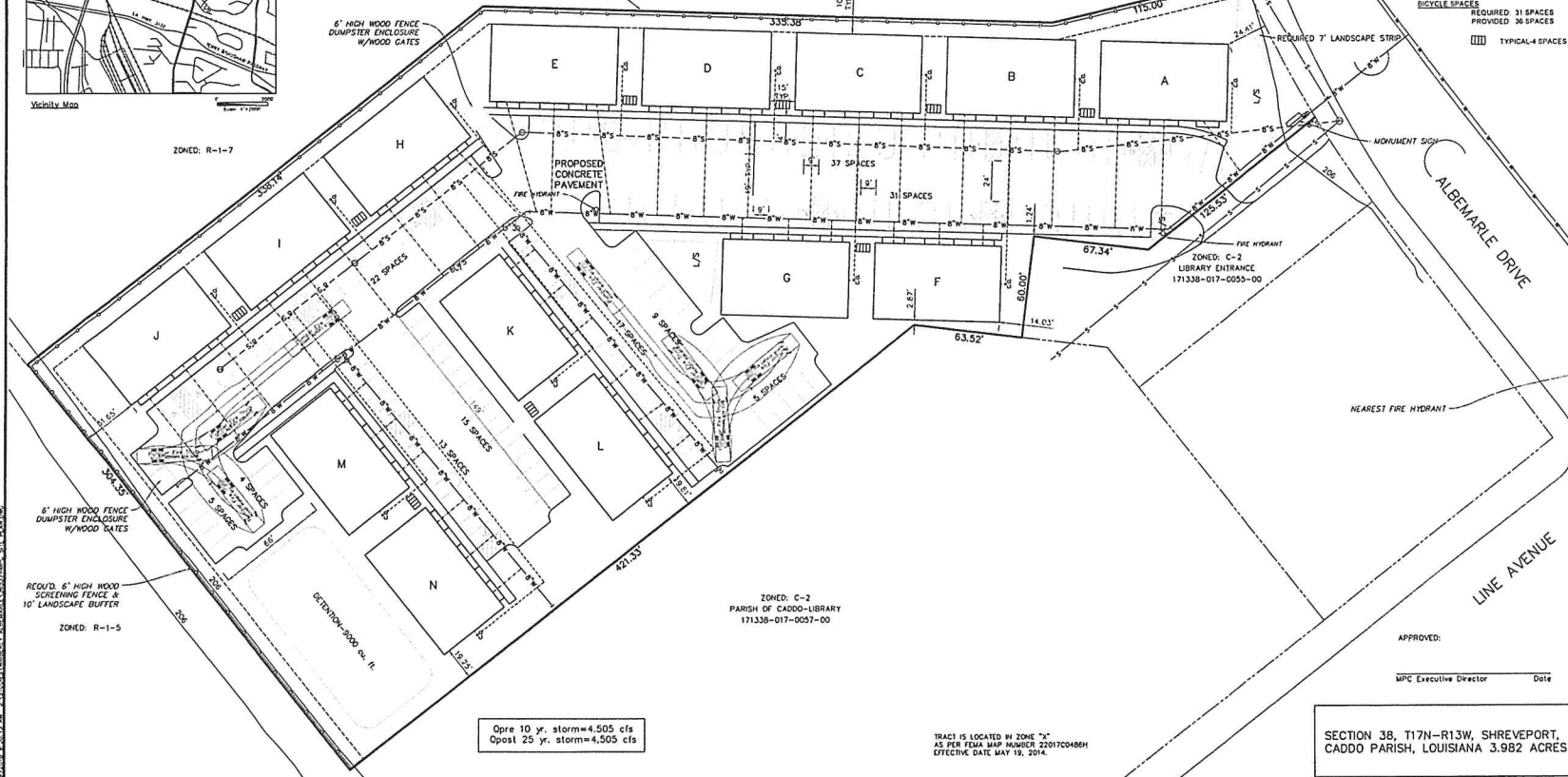


TYPICAL BUILDING  
NOTE: ALL 14 BUILDINGS ARE AS ABOVE

ZONED: R-1-7

PARKING REQUIREMENTS  
PARKING REQUIRED: 156 SPACES  
PARKING PROVIDED: 138 SPACES  
TYPICAL SIZE: 9' WIDE x 10' LONG

BICYCLE SPACES  
REQUIRED: 31 SPACES  
PROVIDED: 30 SPACES  
TYPICAL-4 SPACES



Open 10 yr. storm=4,505 cfs  
Open 25 yr. storm=4,505 cfs

TRACT IS LOCATED IN ZONE "X"  
AS PER FEMA MAP NUMBER 220170486H  
EFFECTIVE DATE, MAY 19, 2014.

SECTION 38, T17N-R13W, SHREVEPORT,  
CADDO PARISH, LOUISIANA 3.982 ACRES

DATE	8-10-2017
SCALE	1"=30'
JOB	36566
SHEET	00A
OF	1

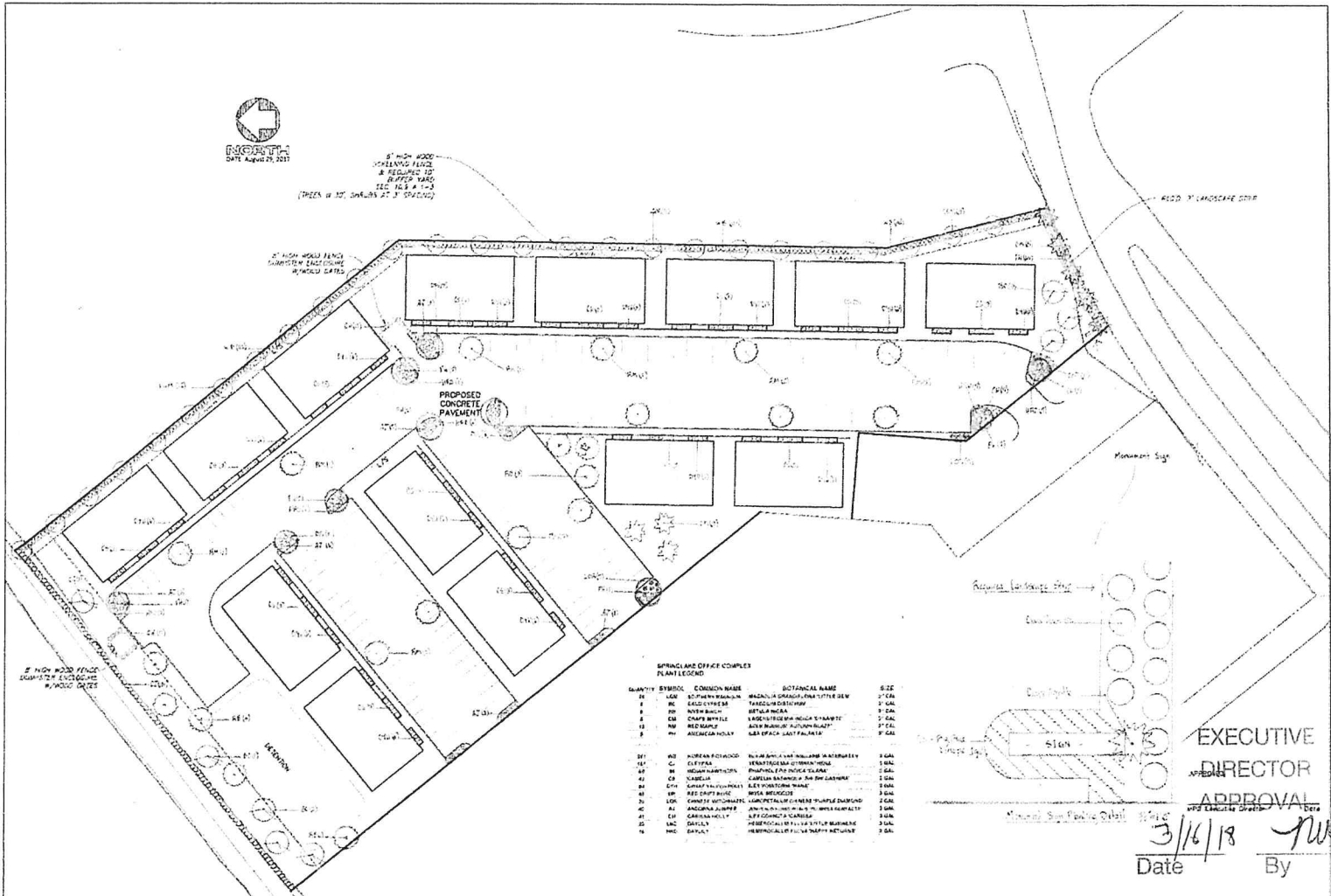
**Mohr and Associates, Inc.**  
 Consulting Civil Engineers & Land Surveyors  
 1324 N. Heane Ave., Ste 301  
 Shreveport, Louisiana 71107  
 Phone: (318) 686-7190  
 Fax: (318) 402-4400

**WIMWAL, LLC**  
 9026 WISTERIAN WAY  
 SHREVEPORT, LA 71106  
 SPRING LAKE OFFICE PARK

APPROVED: \_\_\_\_\_ Date \_\_\_\_\_  
 MPC Executive Director



8' HIGH WOOD  
SCREENED FENCE  
& REQUIRED TO  
BE SET BACK  
TWO (2) FEET  
(TWO (2) FEET SETBACK AT 3' INTERVAL)



SPRING LAKE OFFICE COMPLEX  
PLANT LISTING

QUANTITY	SYMBOL	COMMON NAME	BOTANICAL NAME	SIZE
10	100	SCOTCH BROOM	BRASSICA GRASSIFOLIA LITTLE SEW	2' CAL
1	101	LEGGY CYPRUS	TRACHYDRACON	2' CAL
1	102	WATER BUSH	ERTERIA INDICA	2' CAL
1	103	ORANGE BLOSSOM	SPRENGERIA ANGUSTIFOLIA	2' CAL
1	104	ARIZONA HOLLY	ILEX PARVIFLORA	2' CAL
10	105	MORNING GLORY	IPOMOEA SP. (VINE)	1' CAL
10	106	LEGGY CYPRUS	TRACHYDRACON	1' CAL
10	107	WATER BUSH	ERTERIA INDICA	1' CAL
10	108	ORANGE BLOSSOM	SPRENGERIA ANGUSTIFOLIA	1' CAL
10	109	ARIZONA HOLLY	ILEX PARVIFLORA	1' CAL
10	110	MORNING GLORY	IPOMOEA SP. (VINE)	1' CAL
10	111	LEGGY CYPRUS	TRACHYDRACON	1' CAL
10	112	WATER BUSH	ERTERIA INDICA	1' CAL
10	113	ORANGE BLOSSOM	SPRENGERIA ANGUSTIFOLIA	1' CAL
10	114	ARIZONA HOLLY	ILEX PARVIFLORA	1' CAL
10	115	MORNING GLORY	IPOMOEA SP. (VINE)	1' CAL
10	116	LEGGY CYPRUS	TRACHYDRACON	1' CAL
10	117	WATER BUSH	ERTERIA INDICA	1' CAL
10	118	ORANGE BLOSSOM	SPRENGERIA ANGUSTIFOLIA	1' CAL
10	119	ARIZONA HOLLY	ILEX PARVIFLORA	1' CAL
10	120	MORNING GLORY	IPOMOEA SP. (VINE)	1' CAL

EXECUTIVE  
DIRECTOR  
APPROVAL  
Date: 3/16/18 By: [Signature]

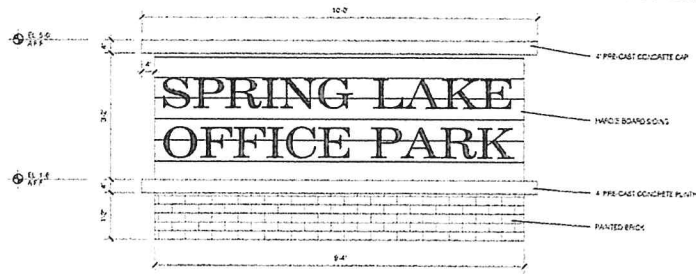
MOHR AND ASSOCIATES, INC.  
 CONSULTING CIVIL ENGINEERS & LAND SURVEYORS  
 1324 N. HEARNE AVE., SUITE 303  
 SHREVEPORT, LOUISIANA 71107  
 PHONE: (504) 686-7100  
 FAX: (504) 407-4400

LANDSCAPING PLAN SPRING LAKE  
 OFFICE PARK 9026 WISTERIAN WAY,  
 SHREVEPORT, LA 71106  
 WINNALL

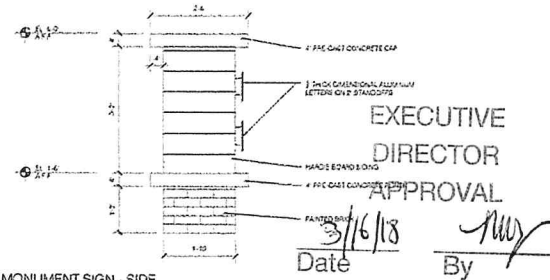
Date: MARCH 2018  
 Scale: 1"=30'  
 Drawn: RLR  
 Job: 36537  
 Sheet: L-1  
 of 11

RECEIVED  
MAR 16 2018  
METROPOLITAN PLANNING  
COMMISSION



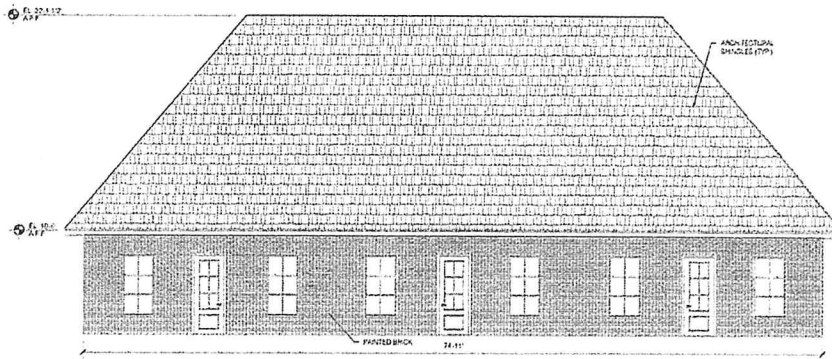


D1 MONUMENT SIGN - FRONT  
SCALE: 3/4" = 1'-0"

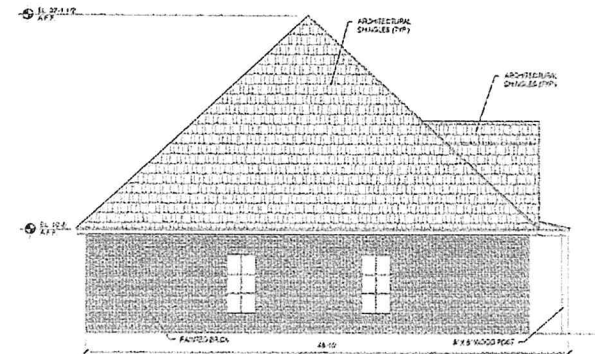


D4 MONUMENT SIGN - SIDE  
SCALE: 3/4" = 1'-0"

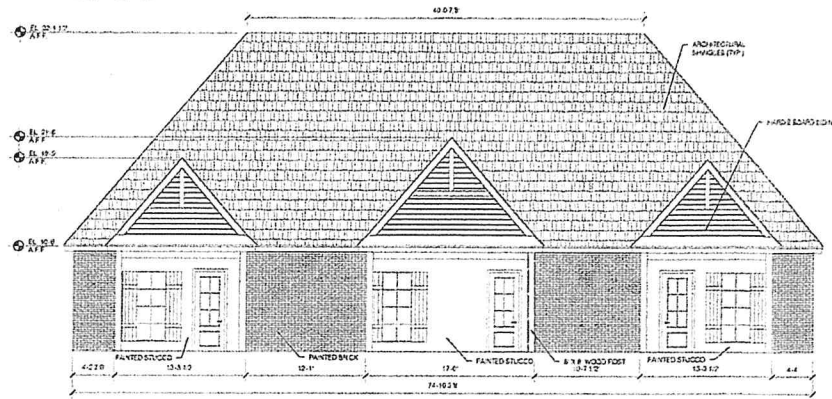
EXECUTIVE  
DIRECTOR  
APPROVAL  
Date 3/16/18 By *[Signature]*



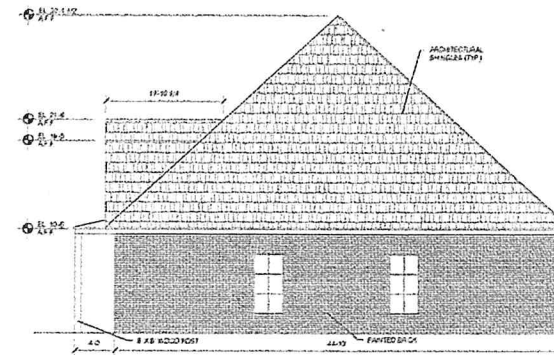
B1 EXTERIOR ELEVATION - REAR  
SCALE: 3/16" = 1'-0"



B4 EXTERIOR ELEVATION - RIGHT SIDE  
SCALE: 3/16" = 1'-0"



A1 EXTERIOR ELEVATION - FRONT  
SCALE: 3/16" = 1'-0"



A4 EXTERIOR ELEVATION - LEFT SIDE  
SCALE: 3/16" = 1'-0"

IA ARCHITECTURE

SPRING LAKE  
OFFICE PARK

NOTES:  
1. ALL MATERIALS TO BE APPROVED BY THE ARCHITECT.  
2. ALL MATERIALS TO BE MATCHED TO THE EXISTING BUILDING.  
3. ALL MATERIALS TO BE MATCHED TO THE EXISTING BUILDING.  
4. ALL MATERIALS TO BE MATCHED TO THE EXISTING BUILDING.  
5. ALL MATERIALS TO BE MATCHED TO THE EXISTING BUILDING.

EXTERIOR  
ELEVATIONS

PROJECT NO.	IA 1754
SHEET	A4.01

C:\Users\jfrank\OneDrive\Documents\Spring Lake Office Park\Construction Documents\Common\A4.01 Exterior Elevations.rvt









