

**MAKO EXPRESS CAR WASH  
DRAWINGS LIST**

- C-1 TITLE SHEET
- C-2 DEMOLITION PLAN
- C-3 CIVIL SITE PLAN
- C-4 GRADING & DRAINAGE PLAN
- C-4A DRAINAGE AREA PLAN & CALCULATIONS
- C-5 UTILITY PLAN
- C-6 CONSTRUCTION DETAILS
- C-6A CONSTRUCTION DETAILS
- C-6B CONSTRUCTION DETAILS
- C-6C CONSTRUCTION DETAILS
- C-7 JOINT LAYOUT
- C-8 EROSION CONTROL PLAN
- C-9 FIRE PROTECTION SITE PLAN
- C-10 TRUCK ROUTE PLAN
- LS-1 LANDSCAPE PLAN
- IR-1 IRRIGATION PLAN

BOUNDARY SURVEY (1 OF 2)  
BOUNDARY SURVEY (2 OF 2)

LADOTD CB-ADJUST: ADJUSTMENT/CONVERSION  
OF EXISTING CATCH BASINS OR MANHOLES

TOTAL: 19 SHEETS

AGENCY CONTACT LIST

<b>ELECTRIC</b> AEP SOUTHWESTERN ELECTRIC POWER COMPANY (888) 216-3523	<b>CITY OF SHREVEPORT</b> PATRICK FURLONG CITY ENGINEER (318) 673-6000
<b>TELEPHONE</b> AT&T	<b>ROADWAY</b> JIM HOLLIER, P.E. LADOTD (318) 549-8305
<b>WATER &amp; SEWER</b> WILLIAM DANIEL CITY OF SHREVEPORT WATER & SEWERAGE (318) 673-7660	<b>FIRE MARSHAL</b> (318) 676-7145
<b>GAS</b> CENTERPOINT ENERGY (866) 275-5252	

TEAM MEMBERS

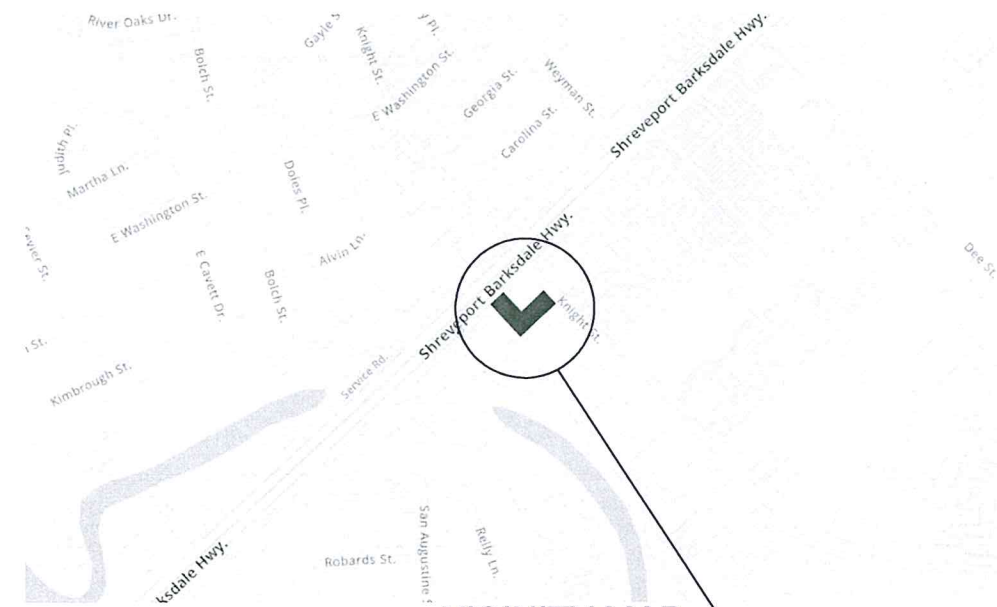
MAINLAND RETAIL, LLC 1905 ACKLEN AVE. NASHVILLE, TN 37212	TREY HART TEL: (252) 205-5089
LINFIELD, HUNTER & JUNIUS, INC. 3608 18TH ST. METAIRIE, LA 70002	CASEY GENOVESE, P.E. TEL: (504) 833-5300 FAX: (504) 833-5350
LINFIELD, HUNTER & JUNIUS, INC. 3608 18TH ST. METAIRIE, LA 70002	BENJAMIN CHADWICK, A.I.A. TEL: (504) 833-5300 FAX: (504) 833-5350

SITE STATISTICAL DATA

EXISTING USE: FOOD MARKET & GYM DEVELOPMENT  
 PROPOSED USE: CAR WASH  
 SITE AREA: 0.976 ACRES  
 BUILDING AREA: ±3,500 SQ. FT. (GROSS)  
 PARKING REQ'D: 4 QUEUE STALLS PER BAY  
 PARKING PROVIDED: 24 VACUUM STATIONS + 3 EMPLOYEE PARKING SPACES  
 16 QUEUE STALLS  
 HANDICAP SPACES PROVIDED: 2 W/2 VAN ACCESSIBLE  
 BUILDING HEIGHT PROPOSED: 31'±  
 TRUCK TYPE: WB-40

# DEVELOPMENT PLANS FOR MAKO EXPRESS CAR WASH

## 1047 SHREVEPORT BARKSDALE HWY. (LA HWY 3032) SHREVEPORT, LA



VICINITY MAP  
SCALE: 1"=500'

**EXECUTIVE  
DIRECTOR  
APPROVAL**

4.25.24 *aa*  
Date By



PROJECT LOCATION  
SHREVEPORT BARKSDALE HWY.  
(LA HWY 3032)  
SHREVEPORT, LA

# LINFIELD, HUNTER & JUNIUS, INC. PROFESSIONAL ENGINEERS, ARCHITECTS AND SURVEYORS METAIRIE, LOUISIANA

- ▲ SHREVEPORT MPC SITE PLAN REVIEW COMMENTS
- ▲ MAKO EXPRESS CAR WASH
- ▲ MAKO EXPRESS BUILDING
- ▲ SHREVEPORT MPC SITE PLAN REVIEW COMMENTS

REV. NO.	DATE
▲	09/29/23
▲	12/15/23
▲	01/29/24
▲	03/22/24

**DEVELOPER:**  
MAINLAND RETAIL LLC  
1905 ACKLEN AVE.  
NASHVILLE, TN 37212  
TEL: (615) 457-3005

**LINFIELD, HUNTER & JUNIUS, INC.**  
 PROFESSIONAL ENGINEERS,  
 ARCHITECTS AND SURVEYORS  
 3608 18th Street, Suite 200  
 Metairie, Louisiana 70002  
 PHONE: (504) 833-5300  
 FAX: (504) 833-5350



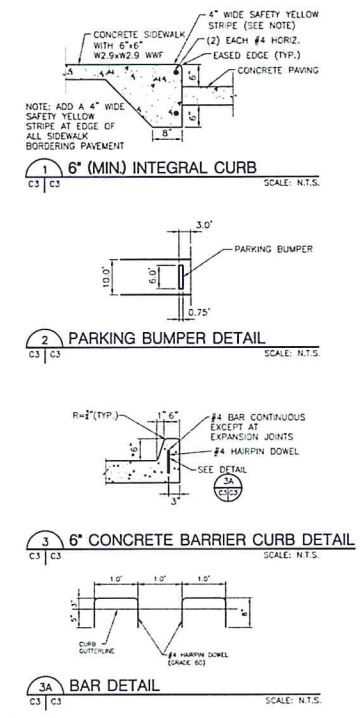
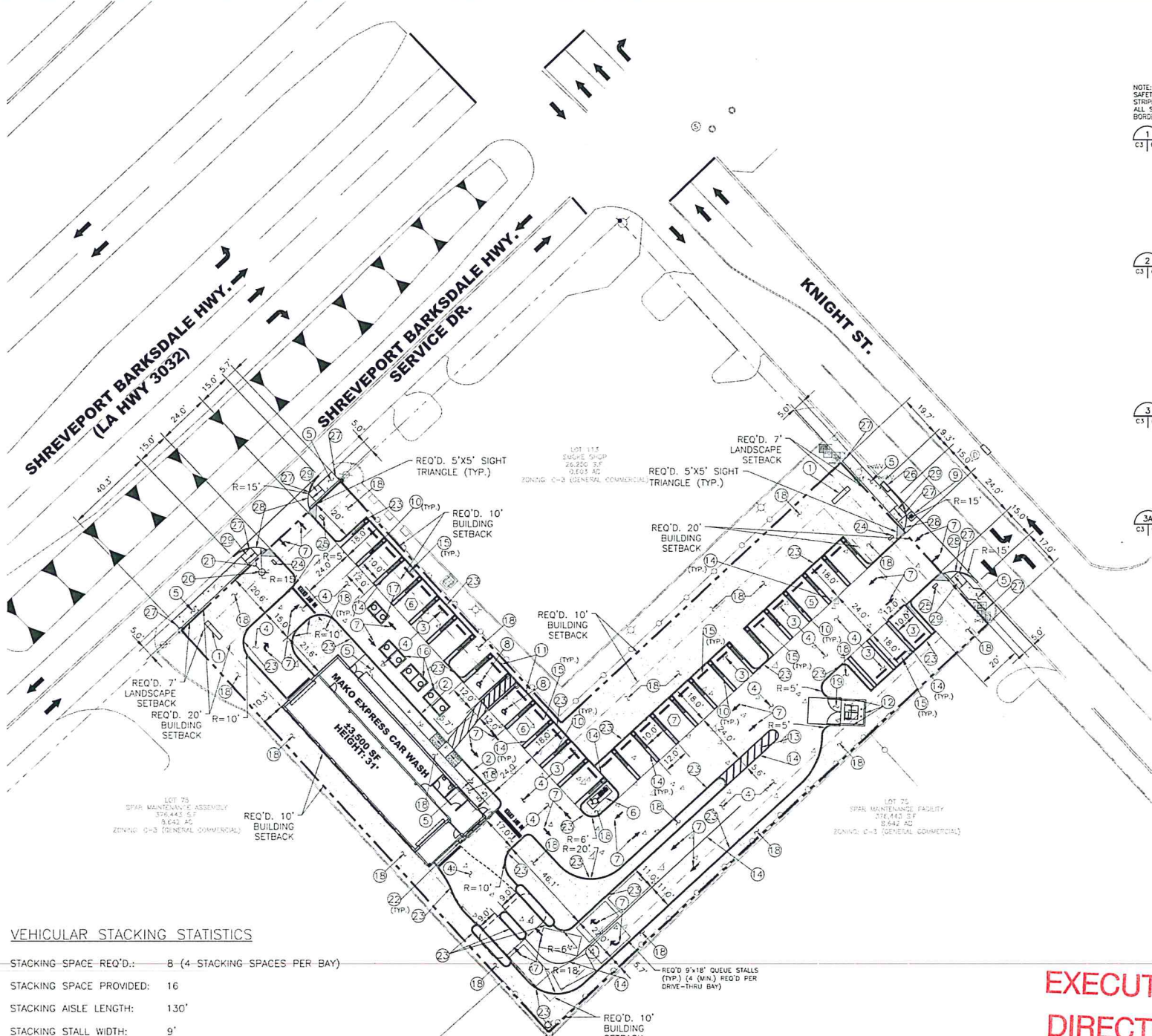
MAKO EXPRESS CAR WASH - SHREVEPORT BARKSDALE HIGHWAY  
 SHREVEPORT, LA  
 THIS SHEET: TITLE SHEET

PROJ. NO. 22-145  
DATE 08/04/23

**C-1**



LEGEND	
<b>EXISTING FEATURES</b>	
	EXIST. DROP INLET
	EXIST. GUY WIRE
	EXIST. WATERLINE
	EXIST. GAS LINE
	EXIST. UNDERGROUND ELECTRIC LINE
	EXIST. SEWER LINE
	EXIST. TELEPHONE LINE
	EXIST. DRAIN LINE
	TEMPORARY BENCHMARK
	THE POINT OF CHANGE FROM CIRCULAR CURVE TO SPIRAL
	TOP OF CASTING/CURB ELEVATION
	ELEVATION HANDICAP
	SEWER MANHOLE
	EXIST. SEWER MANHOLE
	EXIST. DRAIN MANHOLE
	EXIST. FIRE HYDRANT
	EXIST. WATER VALVE
	EXIST. WATER METER
	GAS METER
	GAS VALVE
	EXIST. SEWER CLEANOUT
	EXIST. SIGN
	EXIST. BOLLARD
	EXIST. FUEL FILLER LIDS
	EXIST. LIGHT POLE
	EXIST. TRAFFIC LIGHT
	HOSE BIB
	EXIST. TRAFFIC SIGNALBOX
	EXIST. RIGHT-OF-WAY MARKER
	EXIST. POWER OR TELEPHONE POLE
	EXIST. CATCH BASIN
	CROSS CUT IN CONC.
	EXIST. BOUNDARY LINE
	REINFORCED CONCRETE PIPE
	CORRUGATED METAL PIPE
	INVERT ELEVATION
	CONCRETE SIDEWALK
	OVERHEAD ELECTRIC
	EXIST. TREE OR SHRUB
	EXIST. DITCH
	EXIST. CHAINLINK FENCE
	FOUND IRON PIPE
	DENOTES 1/2 IRON ROD SET
<b>NEW FEATURES</b>	
	REQ'D POWER POLE
	REQ'D GUY WIRE



**VEHICULAR STACKING STATISTICS**

STACKING SPACE REQ'D:	8 (4 STACKING SPACES PER BAY)
STACKING SPACE PROVIDED:	16
STACKING AISLE LENGTH:	130'
STACKING STALL WIDTH:	9'
STACKING STALL LENGTH:	18'

**SITE PLAN STATISTICS**

EXISTING USE:	FOOD MARKET & GYM DEVELOPMENT
PROPOSED USE:	CAR WASH
SITE AREA:	0.976 ACRES
BUILDING AREA:	±3,500 SQ. FT. (GROSS)
PARKING REQ'D:	4 QUEUE STALLS PER BAY
PARKING PROVIDED:	24 VACUUM STATIONS + 3 EMPLOYEE PARKING SPACES 16 QUEUE SPACES
HANDICAP SPACES PROVIDED:	2 W/2 VAN ACCESSIBLE
BUILDING HEIGHT PROPOSED:	31'±
TRUCK TYPE:	WB-40

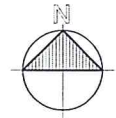
**NOTES:**

- CONTRACTOR SHALL BE RESPONSIBLE FOR LAYING OUT THE WORK, VERIFYING ALL MEASUREMENTS AND GRADES AND REPORTING ANY DISCREPANCIES TO THE ENGINEER BEFORE STARTING CONSTRUCTION.
- ANY WORK IN THE ROADWAY OR ADJACENT TO THE ROADWAY CAUSING AN INTERFERENCE TO VEHICULAR TRAFFIC REQUIRES PRIOR NOTIFICATION TO CITY OF SHREVEPORT AND LADOTD AND CONFORMITY TO THE REQUIREMENTS OF THE MANUAL ON UNIFORM TRAFFIC CONTROL DEVICES OF THE STATE OF LOUISIANA. THE CONTRACTOR MUST FURNISH ALL TRAFFIC SIGNS AND/OR BARRICADES AND MAINTAIN THEM DURING CONSTRUCTION ACTIVITY. CONTRACTOR WILL BE RESPONSIBLE FOR THE PREPARATION AND IMPLEMENTATION OF ANY REQUIRED TRAFFIC CONTROL PLANS FOR IMPROVEMENTS WITHIN ADJACENT RIGHT OF WAY.
- REFER TO BOUNDARY SURVEY FOR EXISTING MONUMENTS TO LAYOUT PROPERTY LINE.
- BRING UP GRADE UNDER ALL PAVEMENT WITH STRUCTURAL FILL COMPACTED IN ACCORDANCE WITH GEOTECH REPORT.
- ALL DIMENSIONS SHOWN ARE FROM:
  - FACE OF CURB/EDGE OF PAVEMENT TO FACE OF CURB/EDGE OF PAVEMENT
  - FACE OF CURB/EDGE OF PAVEMENT TO PROPERTY LINE
  - FACE OF CURB/EDGE OF PAVEMENT TO CENTER OF STRUCTURE (DROP INLET, MANHOLE, ETC.)
  - PROPERTY LINE TO BUILDING FACE

- ALL CONSTRUCTION SHALL CONFORM WITH APPLICABLE STATE, CITY, AND PARISH CONSTRUCTION STANDARDS AS IDENTIFIED IN THESE PLANS. THE CONTRACTOR SHALL MAINTAIN A CURRENT RELEASE OF THE STATE, CITY, AND PARISH LAND DEVELOPMENT STANDARDS MANUAL ON THE PROJECT SITE FOR REFERENCE DURING CONSTRUCTION OF THE PROJECT.
- ALL PAINT STRIPING, PAVEMENT MARKINGS, AND SIGNAGE SHALL CONFORM TO THE "MANUAL ON UNIFORM TRAFFIC CONTROL DEVICES" OR AS OTHERWISE SPECIFIED. ALL REFERENCED SIGN STANDARDS ARE TAKEN FROM THE "MANUAL ON UNIFORM TRAFFIC CONTROL DEVICES". ALL NEW SIGNS SHALL BE MOUNTED ON GALVANIZED POSTS AND IN ACCORDANCE WITH STATE, CITY, AND PARISH REGULATIONS.
- CONTRACTOR SHALL INSTALL ACCESSIBLE RAMPS PER CITY OF SHREVEPORT AND ADA STANDARDS AT ALL DRIVE AND BUILDING LOCATIONS AS REQUIRED.
- CONTRACTOR IS RESPONSIBLE FOR THE INSTALLATION AND MAINTENANCE OF ALL EROSION CONTROL DEVICES SHOWN ON THE APPROVED PLANS FOR THE DURATION OF CONSTRUCTION OR UNTIL FINAL INSPECTION.
- A SIGN PERMIT MUST BE OBTAINED PRIOR TO INSTALLATION OF STANDARD SIGN.
- CONTRACTOR IS RESPONSIBLE FOR VERIFYING POSTAL DELIVERY METHOD WITH CITY OF SHREVEPORT. IF A PHYSICAL MAILBOX IS REQUIRED, THE CONTRACTOR IS RESPONSIBLE FOR THE PURCHASE, LOCATION PLACEMENT, AND INSTALLATION.
- ALL CURB RADII SHALL BE 3 FEET UNLESS OTHERWISE NOTED ON THIS PLAN.

**EXECUTIVE DIRECTOR APPROVAL**

4-25-24 *[Signature]*  
Date By



**CIVIL SITE PLAN**  
24" x 36" SCALE: 1" = 30'

STRIPING LEGEND	
YELLOW CURBING & BOLLARDS - PARKING LOT	SURFACES SHALL BE CLEAN, DRY AND METAL SURFACES FREE OF HEAVY RUST 2 COATS SHERWIN WILLIAMS - KEM 4000 ACRYLIC ALKYD ENAMEL SAFETY YELLOW B55Y300
STRIPING - PARKING LOT	SURFACES SHALL BE CLEAN AND DRY TOP COAT SHERWIN WILLIAMS - PROMAR TRAFFIC MARKING PAINT YELLOW TMS495
HANDICAP STRIPING - PARKING LOT	SURFACES SHALL BE CLEAN AND DRY TOP COAT SHERWIN WILLIAMS - PROMAR TRAFFIC MARKING PAINT "H.C." BLUE

- CONSTRUCTION LEGEND**
- REQ'D MAKO EXPRESS CAR WASH PYLON SIGN, PERMITTING AND INSTALLATION TO BE PERFORMED BY SIGN CONTRACTOR
  - REQ'D 6" INTEGRAL CURB W/ 4" WIDE SAFETY YELLOW STRIPE (SEE DETAIL 1, THIS SHEET)
  - REQ'D 5" STANDARD DUTY PORTLAND CEMENT CONCRETE PAVEMENT (SEE DETAIL 2A, DWG. C-6)
  - REQ'D 6" HEAVY DUTY PORTLAND CEMENT CONCRETE PAVEMENT (SEE DETAIL 2B, DWG. C-6)
  - REQ'D CONCRETE SIDEWALK (SEE DETAIL 7, DWG. C-6)
  - REQ'D AIR PUMP EQUIPMENT AND PAD (COORDINATE WITH CAR WASH EQUIPMENT MANUFACTURER/SUPPLIER)
  - REQ'D PAVEMENT MARKINGS (SEE DETAILS 1 & 3, DWG. C-6)
  - REQ'D HANDICAP SYMBOL (SEE DETAIL 5, DWG. C-6)
  - REQ'D DROP INLET CONVERSION (CONVERT EXIST. CATCH BASIN TO SURFACE GRATED INLET) (SEE LADOTD "CB ADJUST" DETAIL "ADJUSTMENT /CONVERSION OF EXISTING CATCH BASINS OR MANHOLES" SHEET)
  - REQ'D VACUUM EQUIPMENT (SEE MEP & COORDINATE WITH CAR WASH EQUIPMENT MANUFACTURER /SUPPLIER)
  - REQ'D HANDICAP PARKING SIGN (SEE DETAIL 4, DWG. C-6)
  - REQ'D DUMPSTER ENCLOSURE (SEE DETAIL 1, DWG. C-6B)
  - REQ'D 4" WIDE YELLOW STRIPING @ 45' @ 4' O.C.
  - REQ'D 4" WIDE YELLOW STRIPING
  - REQ'D CONCRETE PARKING BUMPER (SOLID YELLOW) (SEE DETAIL 2, THIS SHEET)
  - REQ'D WATER RECLAMATION SYSTEM (COORDINATE WITH CAR WASH EQUIPMENT MANUFACTURER/SUPPLIER)
  - REQ'D GREASE/OIL/SAND SEPARATOR (COORDINATE WITH CAR WASH EQUIPMENT MANUFACTURER/SUPPLIER)
  - REQ'D BERMUDA SOD (SEE LANDSCAPE PLAN, DWG. LS-1)
  - REQ'D 8" PORTLAND CEMENT CONCRETE PAVEMENT (SEE DETAIL 1, DWG. C-6A)
  - REQ'D UTILITY POLE TO BE INSTALLED BY AEP SOUTHWESTERN ELECTRIC POWER COMPANY AT CONTRACTOR'S EXPENSE
  - GUY WIRES AS NEEDED
  - REQ'D. 6" PIPE BOLLARDS (X6) (SEE DETAIL 8, DWG. C-6)
  - REQ'D. 6" CONC. BARRIER CURB (SEE DETAIL 3, THIS SHEET)
  - REQ'D. "ENTER" DIRECTIONAL SIGN (SEE SIGNAGE PLANS)
  - REQ'D. "EXIT" DIRECTIONAL SIGN (SEE SIGNAGE PLANS)
  - REQ'D. CATCH BASIN & 48" STANDARD INLET (SEE "CITY OF SHREVEPORT STANDARD PLANS: CATCH BASIN AND 48" STANDARD INLET, SHEET C-6C)
  - BEGIN/END REQ'D. CONCRETE SIDEWALK
  - TIE IN SIDEWALK TO DRIVEWAY
  - REQ'D. ADA RAMP

PAVING LEGEND	
CONCRETE PAVING	
STRIPED ISLAND	

LANDSCAPING LEGEND	
REQ'D BERMUDA SOD	

**DEVELOPER:**  
MAINLAND RETAIL LLC  
1905 ACKLEN AVE.  
NASHVILLE, TN 37212  
TEL: (615) 457-3005

**LINFIELD, HUNTER & JUNIUS, INC.**  
PROFESSIONAL ENGINEERS,  
ARCHITECTS AND SURVEYORS  
3608 18th Street, Suite 200  
Metairie, Louisiana 70002



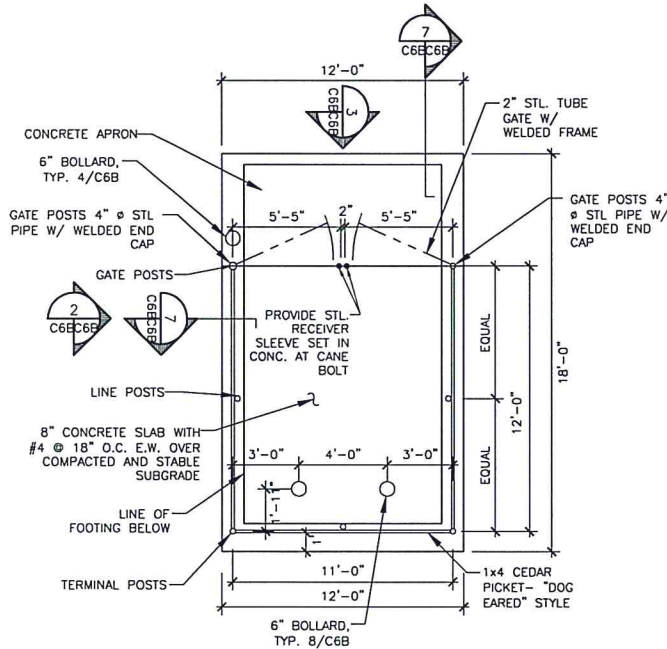
REV. NO.	DATE
1	09/29/23
2	12/15/23
3	01/29/24
4	03/22/24

MAKO EXPRESS CAR WASH - SHREVEPORT BARKSDALE HIGHWAY  
SHREVEPORT, LA  
THIS SHEET: **CIVIL SITE PLAN**

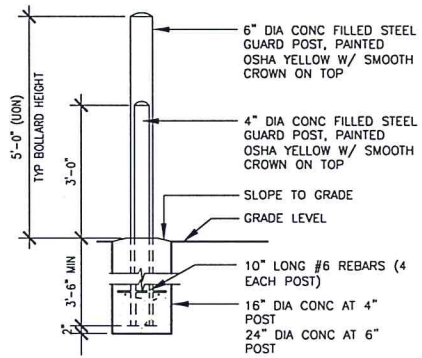
PROJ. NO. 22-145  
DATE 08/04/23

**C-3**

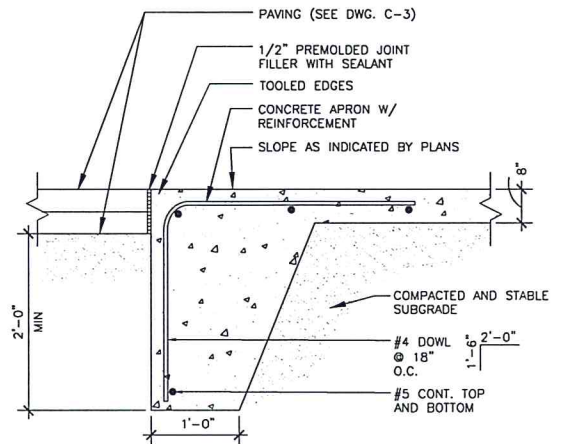




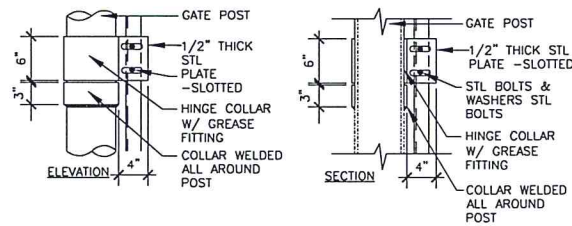
1 ENCLOSURE PLAN - DUMPSTER  
SCALE: 1/4" = 1'-0"



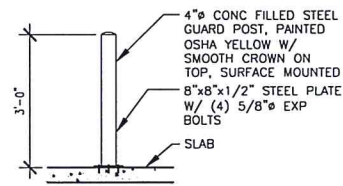
4 EXTERNAL BOLLARD DETAIL  
SCALE: 1/2" = 1'-0"



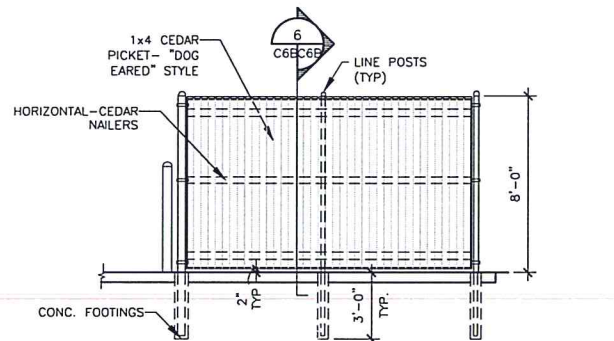
7 CONCRETE APRON DETAIL  
SCALE: 1" = 1'-0"



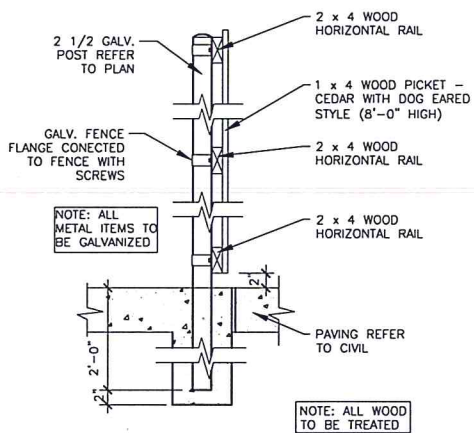
5 GATE HINGE DETAIL  
SCALE: 1" = 1'-0"



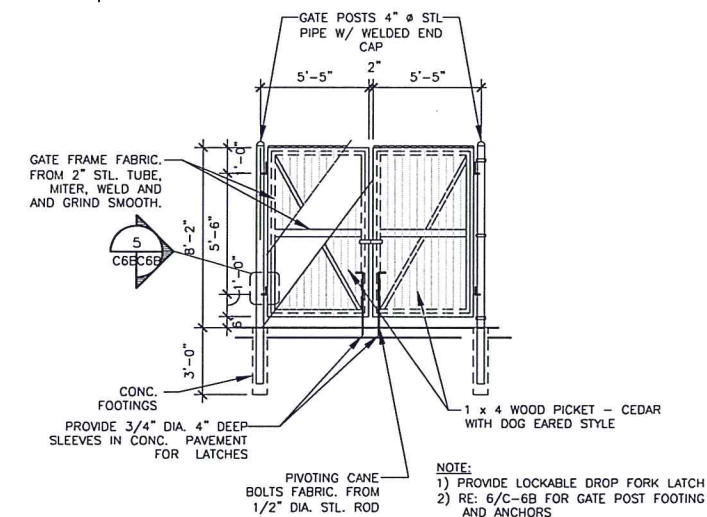
8 INTERNAL BOLLARD DETAIL  
SCALE: 1/2" = 1'-0"



2 ENCLOSURE ELEVATION - DUMPSTER  
SCALE: 1/4" = 1'-0"



6 DUMPSTER FENCE DETAIL  
SCALE: 1" = 1'-0"



3 GATE ELEVATION - DUMPSTER  
SCALE: 1/4" = 1'-0"

EXECUTIVE  
DIRECTOR  
APPROVAL

4-25-24  
Date By

DEVELOPER:  
MAINLAND RETAIL LLC  
1905 ACKLEN AVE.  
NASHVILLE, TN 37212  
TEL: (615) 457-3005

LINFIELD, HUNTER & JUNIUS, INC.  
PROFESSIONAL ENGINEERS,  
ARCHITECTS AND SURVEYORS  
3608 18th Street, Suite 200  
Metairie, Louisiana 70002  
PHONE: (504) 833-5300  
FAX: (504) 833-5350

REV. NO.	DATE
1	12/15/23

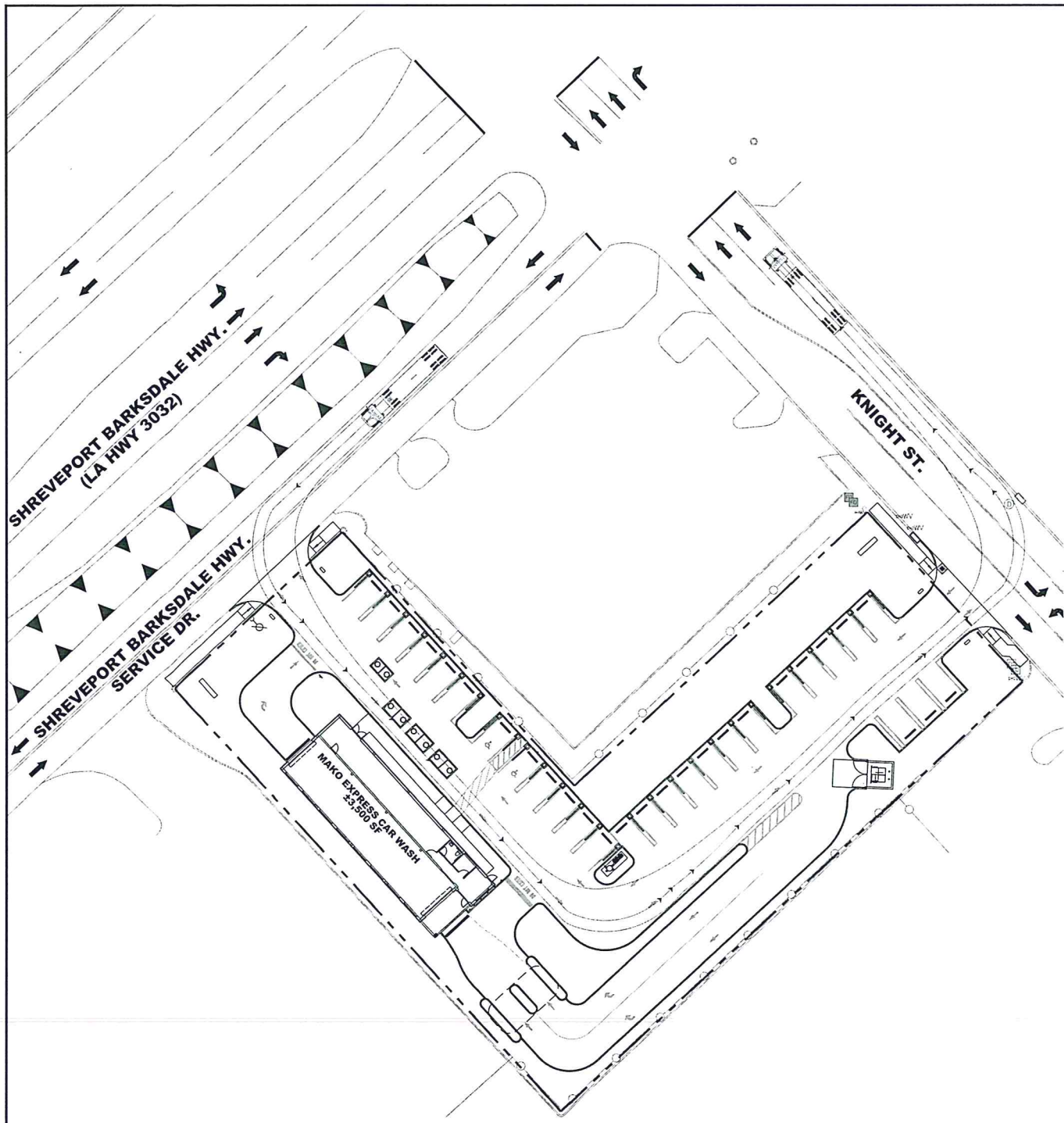
MAKO EXPRESS CAR WASH - SHREVEPORT BARKSDALE HIGHWAY  
SHREVEPORT, LA

CONSTRUCTION DETAILS

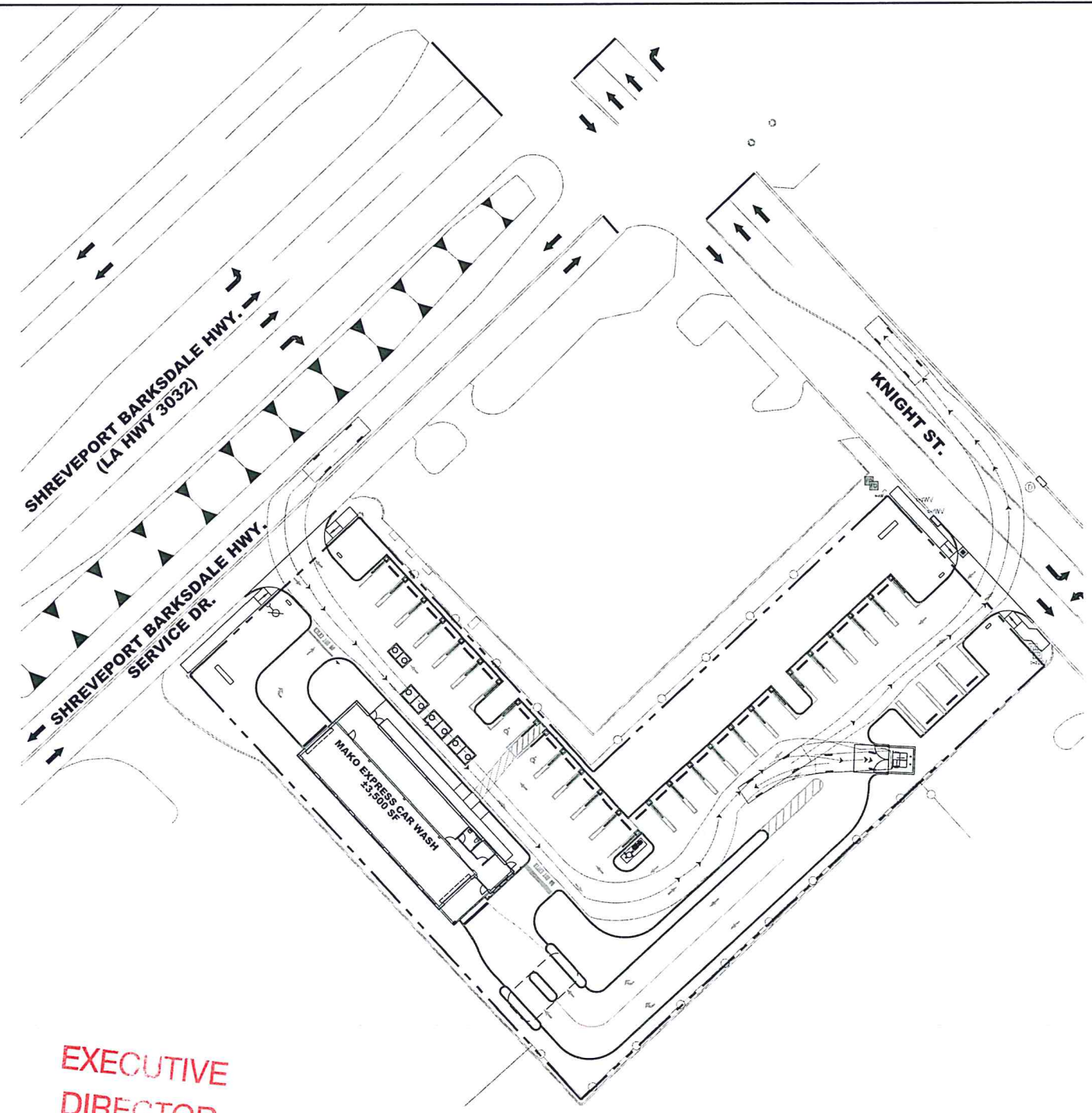
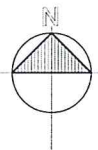
PROJ. NO. 22-145  
DATE 08/04/23

C-6B

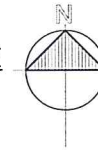




WB-40 TRUCK ROUTE  
24" x 36" SCALE: 1" = 30'



TRASH TRUCK ROUTE  
24" x 36" SCALE: 1" = 30'

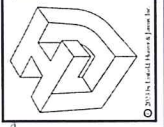


EXECUTIVE  
DIRECTOR  
APPROVAL

4-25-24  
Date By *Ac Ollie*

DEVELOPER:  
MAINLAND RETAIL LLC  
1905 ACKLEN AVE.  
NASHVILLE, TN 37212  
TEL: (615) 457-3005

LINFIELD, HUNTER & JUNIUS, INC.  
PROFESSIONAL ENGINEERS,  
ARCHITECTS AND SURVEYORS  
3608 18th Street, Suite 200  
Metairie, Louisiana 70002  
PHONE: (504) 833-5300  
FAX: (504) 833-5330



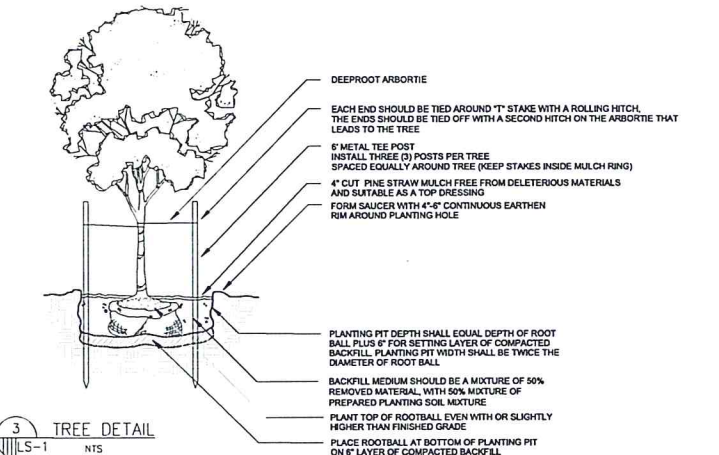
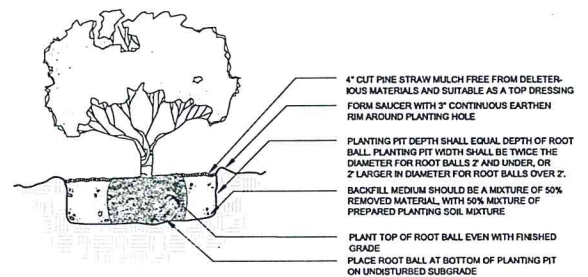
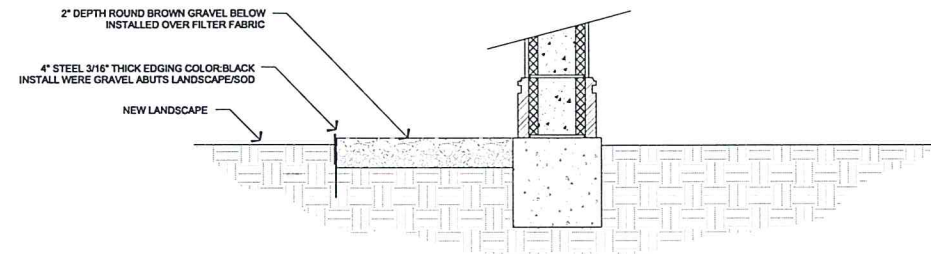
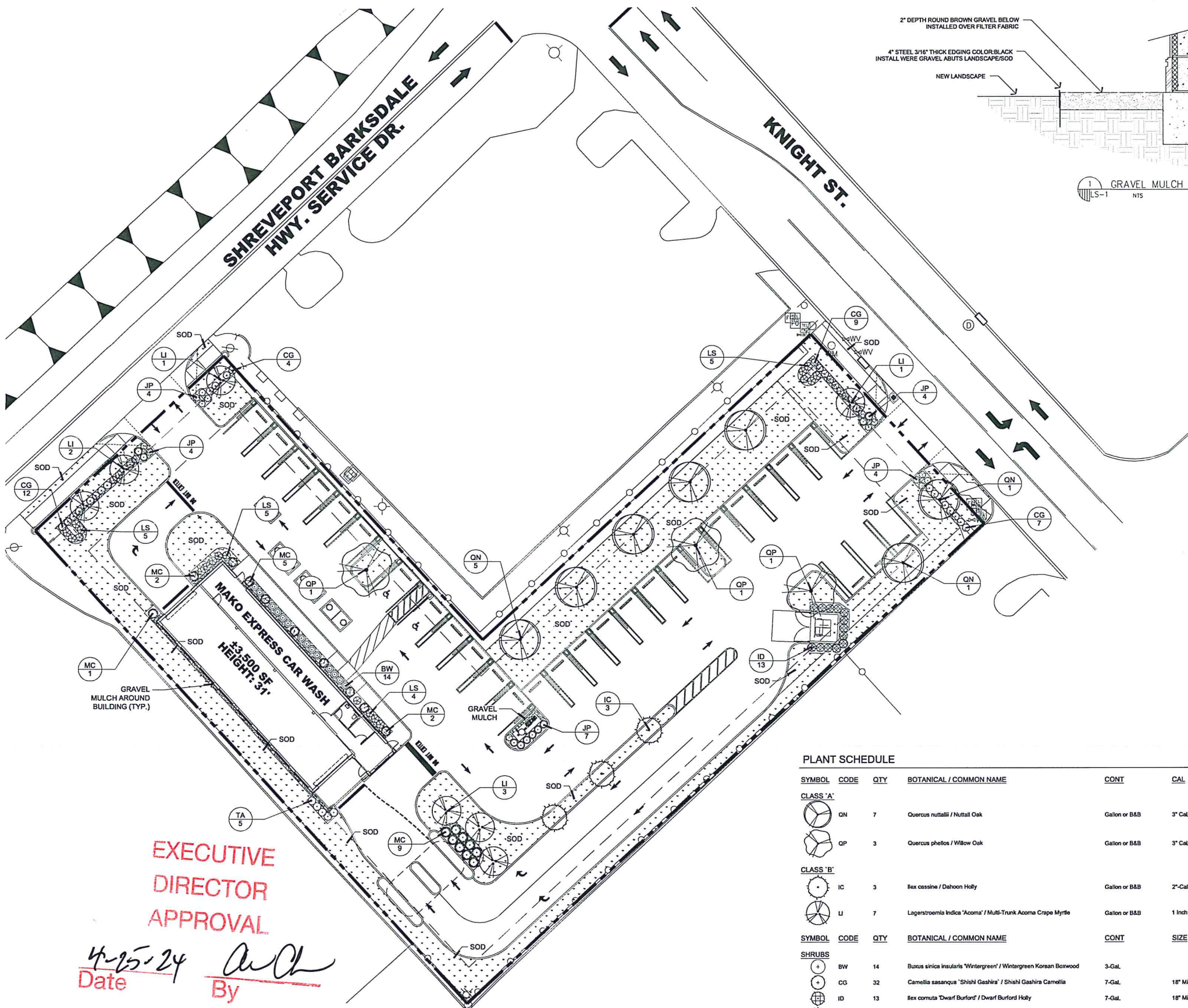
REV. NO.	DATE
1	09/29/23
2	12/15/23
3	01/29/24
4	03/22/24

MAKO EXPRESS CAR WASH - SHREVEPORT BARKSDALE HIGHWAY  
SHREVEPORT, LA  
TRUCK ROUTE PLAN  
THIS SHEET:

PROJ. NO. 22-145  
DATE 08/04/23

C-10



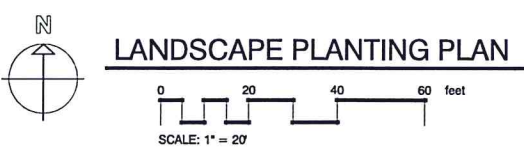


**PLANT SCHEDULE**

SYMBOL	CODE	QTY	BOTANICAL / COMMON NAME	CONT	CAL	SIZE
<b>CLASS 'A'</b>						
QN	7	7	Quercus nuttallii / Nuttall Oak	Gallon or B&B	3\" Cal.	12\" Min. Ht.
QP	3	3	Quercus phellos / Willow Oak	Gallon or B&B	3\" Cal.	12\" Min. Ht.
<b>CLASS 'B'</b>						
IC	3	3	Ilex cassine / Dahoon Holly	Gallon or B&B	2\" Cal.	12\" Min. Ht.
LI	7	7	Lagerstroemia indica 'Acoma' / Multi-Trunk Acoma Crape Myrtle	Gallon or B&B	1 inch per Trunk, 3 trunks Min	12\" Min. Ht.
<b>SHRUBS</b>						
BW	14	14	Buxus sinica invaris 'Wintergreen' / Wintergreen Korean Boxwood	3-Gal.		
CG	32	32	Camelia sasanqua 'Shishi Gashira' / Shishi Gashira Camellia	7-Gal.	18\" Min. Ht.	
ID	13	13	Ilex cornuta 'Dwarf Burford' / Dwarf Burford Holly	7-Gal.	18\" Min. Ht.	
JP	23	23	Juniperus chinensis 'Pencil' / Pencil Juniper	3-Gal.		
LS	19	19	Loropetalum chinense rubrum 'Shang-hi' / Purple Diamond® Fringe Flower	3-Gal.		
MC	19	19	Muhlenbergia capillaris / Pink Muhly Grass	3-Gal.		
TA	5	5	Temstroemia gymnanthera / Cleysera	3-Gal.	18\" Min. Ht.	
<b>GROUND COVERS</b>						
EO	12,130 sf		Eremochloa ophiuroides / Centipede Sod	Squares or Mini Rolls		
GRAVEL	225 sf		Mulch Area / Gravel Mulch	River Rock Sicks	3\" Deep w/Filter Fabric	
MULCH	586 sf		Mulch Area / Shredded Bark Mulch	SF	4\" Depth	

**EXECUTIVE  
DIRECTOR  
APPROVAL**

4-25-24 *Arch*  
Date By



**LINFIELD, HUNTER & JUNIUS, INC.**  
PROFESSIONAL ENGINEERS,  
ARCHITECTS AND SURVEYORS  
3608 18th Street, Suite 200  
Metairie, Louisiana 70002  
PHONE: (504) 833-5300  
FAX: (504) 833-5350



REV. NO.	DATE
1	09/29/23
2	03/22/24

**MAKO EXPRESS CAR WASH - SHREVEPORT BARNSDALE HIGHWAY  
SHREVEPORT, LA**

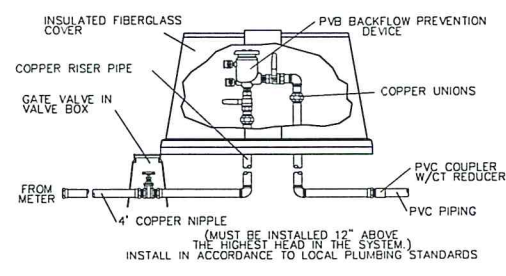
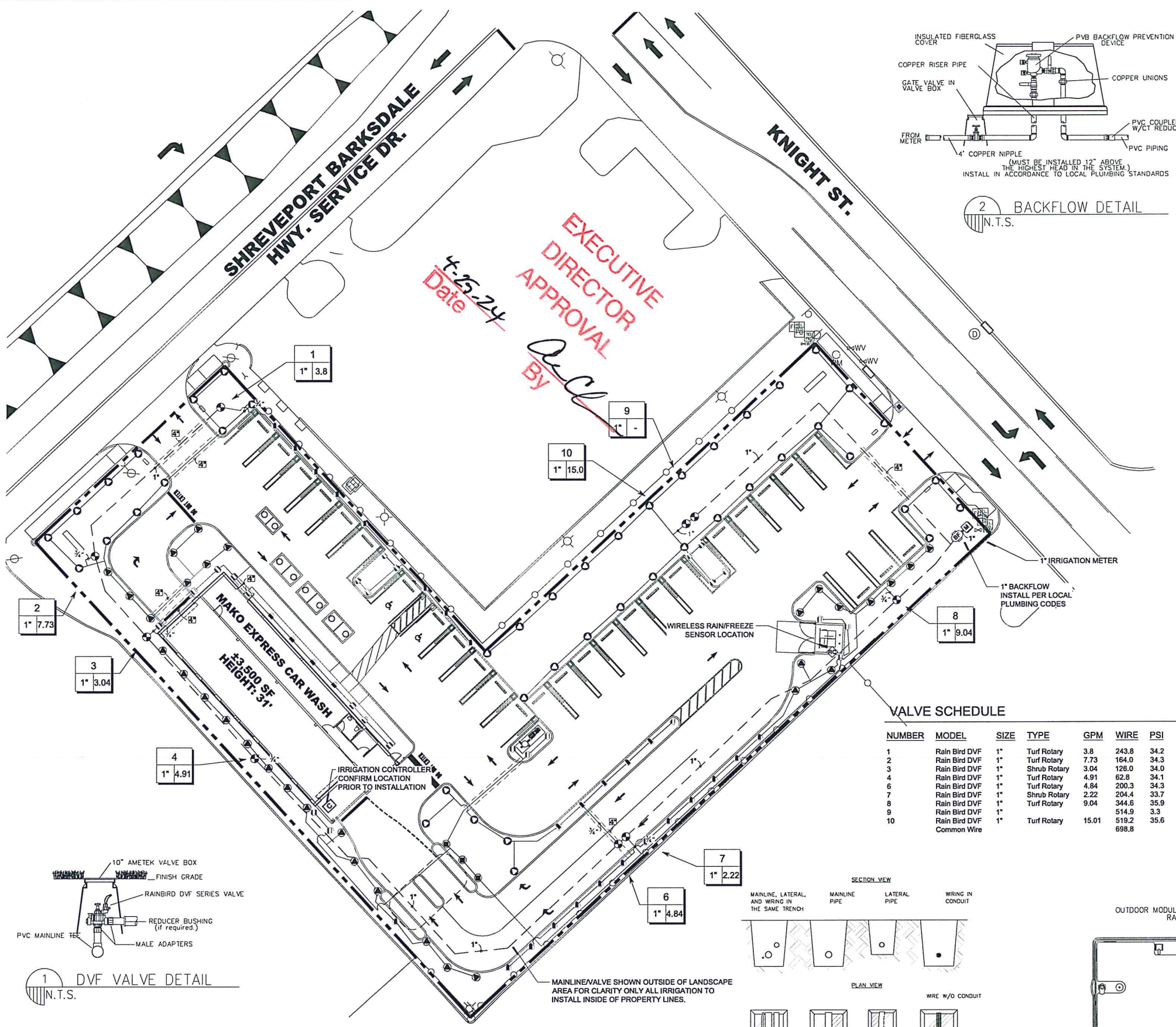
THIS SHEET:  
LANDSCAPE PLANTING PLAN

**DEVELOPER:**  
MAINLAND RETAIL LLC  
1905 ACKLEN AVE.  
NASHVILLE, TN 37212  
TEL: (615) 457-3005

**ALPHONSE BARCIA III  
LANDSCAPE ARCHITECT LLC.**  
562 CLAYTON COURT  
SLIDELL, LOUISIANA 70461  
BARCIADESIGNS@GMAIL.COM  
(985) 960-0429

PROJ. NO. 22-145  
DATE 08/04/23  
**LS-1**





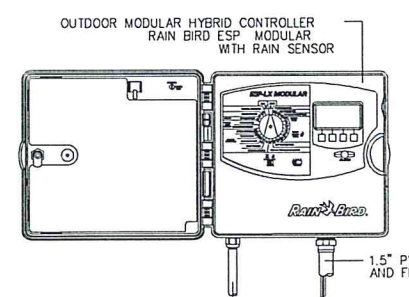
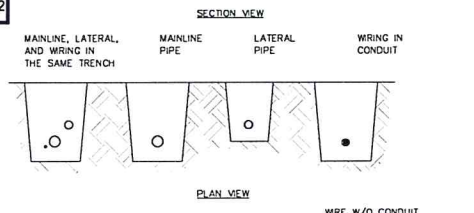
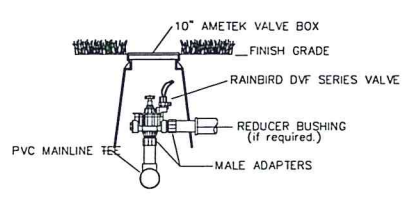
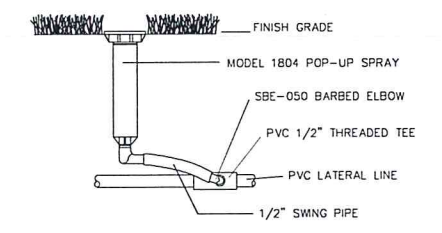
**IRRIGATION SCHEDULE**

SYMBOL	MANUFACTURER/MODEL/DESCRIPTION	QTY	PSI
SST RST	Hunter MP Strip PROS-06-PRS30-CV Turf Rotator, 6in. pop-up with factory installed check valve, pressure regulated to 30 psi, MP Rotator nozzle on PRS30 body. LST=Ivory left strip, SST=Brown side strip, RST=Copper right strip.	35	30
1000	Hunter MP1000 PROS-06-PRS30-CV Turf Rotator, 6in. pop-up with check valve, pressure regulated to 30 psi, MP Rotator nozzle on PRS30 body. M=Maroon adj arc 90 to 210, L=Light Blue 210 to 270 arc, O=Olive 360 arc.	32	30
2000	Hunter MP2000 PROS-06-PRS30-CV Turf Rotator, 6in. pop-up with factory installed check valve, pressure regulated to 30 psi, MP Rotator nozzle on PRS30 body. K=Black adj arc 90-210, G=Green adj arc 210-270, R=Red 360 arc.	45	30
SST RST	Hunter MP Strip PROS-12-PRS30-CV Shrub Rotator, 12in. pop-up with factory installed check valve, pressure regulated to 30 psi, MP Rotator nozzle on PRS30 body. LST=Ivory left strip, SST=Brown side strip, RST=Copper right strip.	20	30
1000	Hunter MP1000 PROS-12-PRS30-CV Shrub Rotator, 12in. pop-up with check valve, pressure regulated to 30 psi, MP Rotator nozzle on PRS30 body. M=Maroon adj arc 90 to 210, L=Light Blue 210 to 270 arc, O=Olive 360 arc.	3	30
SYMBOL	MANUFACTURER/MODEL/DESCRIPTION	QTY	
⊙	Rain Bird DVF Standard configuration, electric remote control valve. Plastic residential in 1in.. With Flow Control.	9	
BF	Febco 765 1" Pressure Vacuum Breaker, brass with ball valve SOV. Install 12in. above highest downstream outlet and the highest point in the downstream piping.	1	
C	Rain Bird ESP4ME3 with (2) ESP-SM3 10 Station, Hybrid Modular Outdoor Controller. For Residential or Light Commercial Use. LNK WiFi Module and Flow Sensor Ready.	1	
RC	Rain Bird WR2-RFC Wireless Rain and Freeze Sensor Combo, includes 1 receiver and 1 rain/freeze sensor transmitter.	1	
M	Water Meter 1"	1	
---	Irrigation Lateral Line: PVC Class 200 SDR 21	2,187 L.F.	
---	Irrigation Mainline: PVC Class 200 SDR 21	698.8 L.F.	
---	Pipe Sleeve: PVC Schedule 40	184.6 L.F.	



**VALVE SCHEDULE**

NUMBER	MODEL	SIZE	TYPE	GPM	WIRE	PSI	PSI @ POC	PRECIP
1	Rain Bird DVF	1"	Turf Rotary	3.8	243.8	34.2	39.1	0.55 in/h
2	Rain Bird DVF	1"	Turf Rotary	7.73	164.0	34.3	42.8	0.35 in/h
3	Rain Bird DVF	1"	Shrub Rotary	3.04	128.0	34.0	38.1	0.6 in/h
4	Rain Bird DVF	1"	Turf Rotary	4.91	62.8	34.1	39.1	0.22 in/h
6	Rain Bird DVF	1"	Turf Rotary	4.84	200.3	34.3	38.4	0.36 in/h
7	Rain Bird DVF	1"	Shrub Rotary	2.22	204.4	33.7	37.3	0.38 in/h
8	Rain Bird DVF	1"	Turf Rotary	9.04	344.6	35.9	40.5	0.39 in/h
9	Rain Bird DVF	1"	Turf Rotary	514.9	3.3	6.7	Unknown	Unknown
10	Rain Bird DVF	1"	Turf Rotary	15.01	519.2	35.6	45.6	0.3 in/h
	Common Wire				698.8			



**DEVELOPER:**  
 MAINLAND RETAIL LLC  
 1905 ACKLEN AVE.  
 NASHVILLE, TN 37212  
 TEL: (615) 457-3005

**ALPHONSE BARCIA III**  
 LANDSCAPE ARCHITECT LLC.  
 562 CLAYTON COURT  
 SLIDELL, LOUISIANA 70461  
 BARCIADESIGNS@GMAIL.COM  
 (985) 960-0429

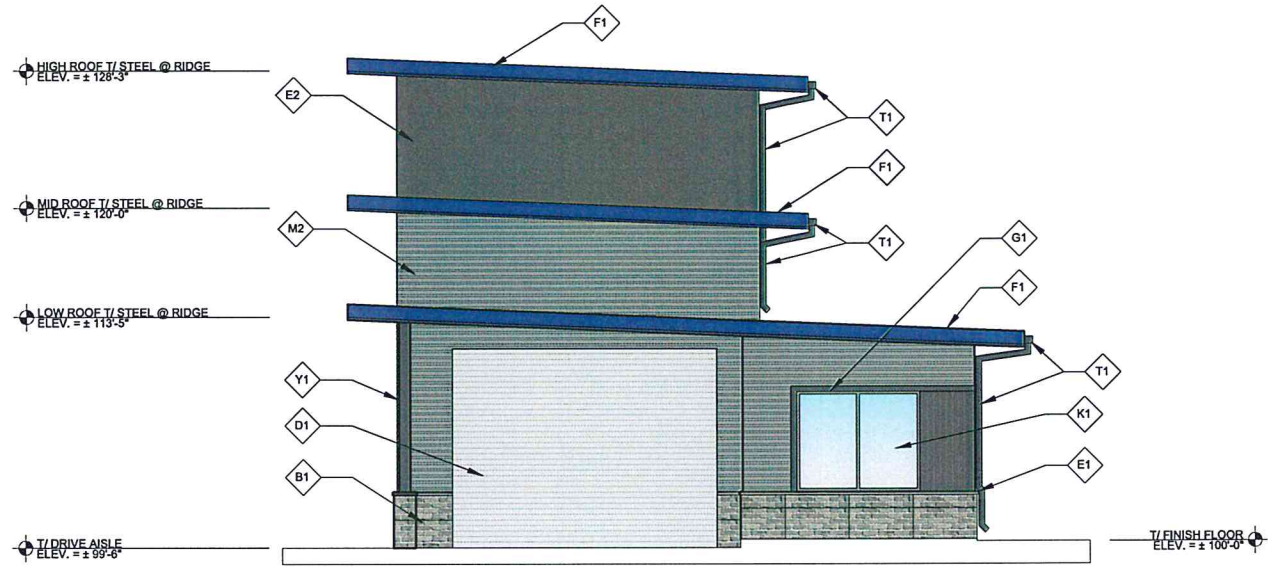
**SHREVEPORT BARKSDALE HIGHWAY SHREVEPORT, LA**  
 Mako Express Car Wash - Shreveport Barksdale Highway Shreveport, LA  
 THIS SHEET: IRRIGATION PLAN  
 PROJ. NO. 22-145  
 DATE 08/04/23  
 IR-1

**LINFIELD, HUNTER & JUNIUS, INC.**  
 PROFESSIONAL ENGINEERS,  
 ARCHITECTS AND SURVEYORS  
 3608 18th Street, Suite 200  
 Metairie, Louisiana 70002  
 PHONE: (504) 833-5300  
 FAX: (504) 833-5350

SEAL  
 STATE OF LOUISIANA  
 PROFESSIONAL ENGINEER  
 LICENSE NO. 10848  
 EXPIRES 03-22-2024



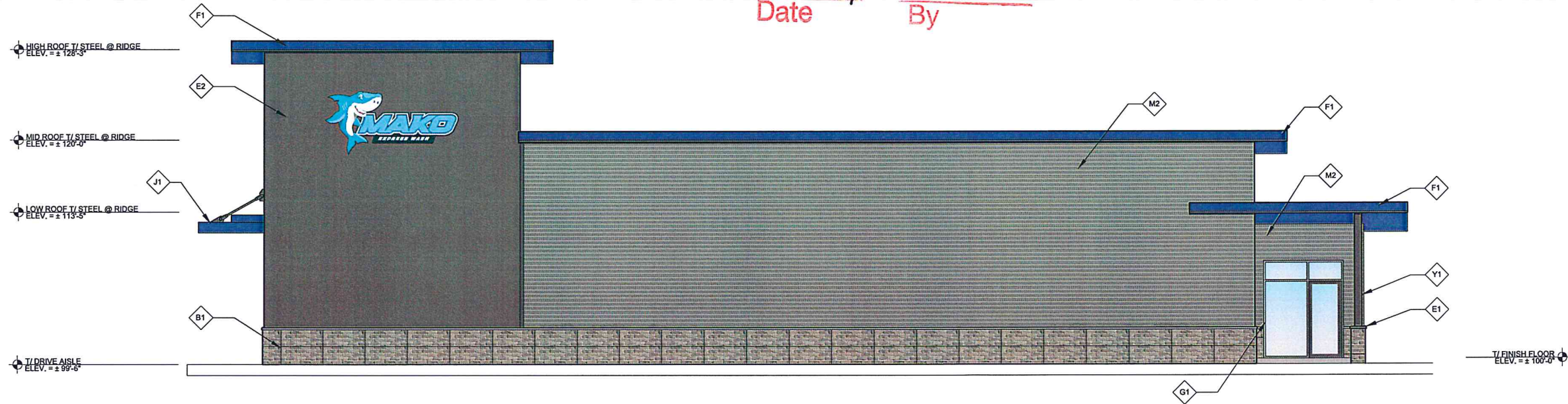
MATERIALS FINISH LEGEND:	
M1	1 1/2" 7.2 VERTICAL RIBBED KYNAR PRE-FINISHED METAL SIDING PANELS COLOR: MUSKET GRAY
M2	1 1/2" 7.2 HORIZONTAL RIBBED KYNAR PRE-FINISHED METAL SIDING PANELS COLOR: ASH GRAY
B1	BRICK VENEER- RUNNING BOND MFG: EAGLE STONE COLOR: ASHLAND TUNDRA
D1	PRE-FINISHED OVERHEAD COILING DOOR MFG: CLOPAY COLOR: WHITE ALUMINUM
F1	22 GAUGE KYNAR PRE-FINISHED METAL FLASHING COLOR: ROYAL BLUE
G1	ANODIZED ALUMINUM LARGE MISSILE IMPACT RATED STOREFRONT ENTRY AND WINDOWS MFG: EAGLE STONE COLOR: ASHLAND TUNDRA
K1	LARGE MISSILE IMPACT RATED GLAZING WITH CLEAR LOW E APPLICATION
Y1	PAINT EXPOSED STEEL W/ DIRECT TO METAL PAINT COLOR: MATCH METAL PANELS
E1	PRE-CAST CONCRETE SILL BLOCK COLOR: GRAY
J1	PRE-FINISHED ALUMINUM CANOPY COLOR: ROYAL BLUE
T1	KYNAR PRE-FINISHED METAL GUTTERS AND DOWNSPOUTS COLOR: MUSKET GRAY
E2	EXTERIOR E.I.F.S SYSTEM BY STO CORP. COATED W/ EXTERIOR ELASTOMERIC ACRYLIC LATEX PAINT COLOR: MATCH METAL PANEL MUSKET GRAY



1 EAST ELEVATION  
A-1.1|A-2.0 SCALE: 3/16" = 1'-0"

EXECUTIVE  
DIRECTOR  
APPROVAL

4-23-24 Date By *AC*



2 SOUTH ELEVATION  
A-1.1|A-2.0 SCALE: 3/16" = 1'-0"

LINFIELD, HUNTER & JUNIUS, INC.  
PROFESSIONAL ENGINEERS, ARCHITECTS  
AND SURVEYORS  
3608 18th Street, Suite 200  
Metairie, Louisiana 70002  
© 2014 by Linfield, Hunter & Junius, Inc.

PRELIMINARY  
FOR REVIEW ONLY  
NOT FOR CONSTRUCTION  
THIS DRAWING IS SUBJECT TO  
REVISION, ALTERATION & DELETION

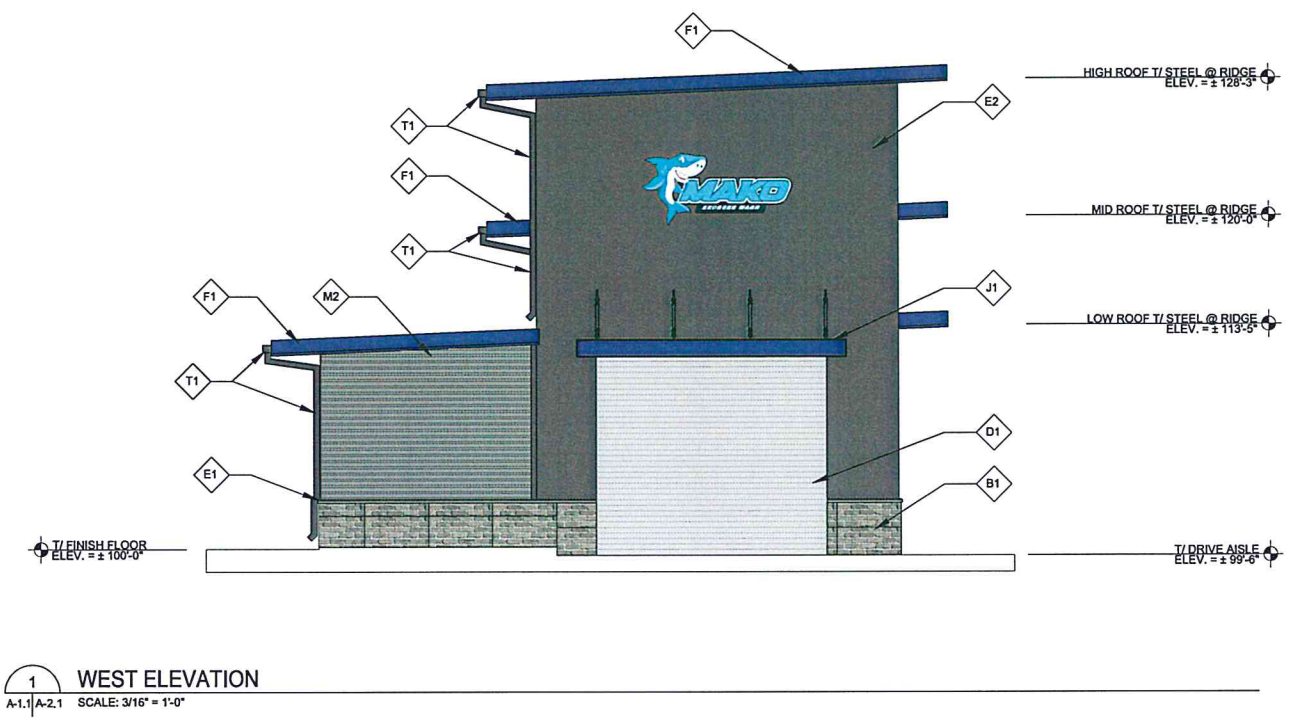
MAKO EXPRESS CAR WASH - SHREVEPORT BARKSDALE HIGHWAY  
SHREVEPORT, LA  
THIS SHEET  
DRAWN BY LHM  
CHECKED BY LHM  
APPROVED BY LHM  
RENDERED EXTERIOR ELEVATIONS

PROJ. NO. 22-145  
DATE 3-20-2024  
SHEET NO.  
A-2.0  
OF SHEETS



MATERIALS FINISH LEGEND:	
M1	1 1/2" 7.2 VERTICAL RIBBED KYNAR PRE-FINISHED METAL SIDING PANELS COLOR: MUSKET GRAY
M2	1 1/2" 7.2 HORIZONTAL RIBBED KYNAR PRE-FINISHED METAL SIDING PANELS COLOR: ASH GRAY
B1	BRICK VENEER- RUNNING BOND MFG: EAGLE STONE COLOR: ASHLAND TUNDRA
D1	PRE-FINISHED OVERHEAD COILING DOOR MFG: CLOPAY COLOR: WHITE ALUMINUM
F1	22 GAUGE KYNAR PRE-FINISHED METAL FLASHING COLOR: ROYAL BLUE
G1	ANODIZED ALUMINUM LARGE MISSILE IMPACT RATED STOREFRONT ENTRY AND WINDOWS MFG: EAGLE STONE COLOR: ASHLAND TUNDRA
K1	LARGE MISSILE IMPACT RATED GLAZING WITH CLEAR LOW E APPLICATION
Y1	PAINT EXPOSED STEEL W/ DIRECT TO METAL PAINT COLOR: MATCH METAL PANELS
E1	PRE-CAST CONCRETE SILL BLOCK COLOR: GRAY
J1	PRE-FINISHED ALUMINUM CANOPY COLOR: ROYAL BLUE
T1	KYNAR PRE-FINISHED METAL GUTTERS AND DOWNSPOUTS COLOR: MUSKET GRAY
E2	EXTERIOR E.I.F.S SYSTEM BY STO CORP. COATED W/ EXTERIOR ELASTOMERIC ACRYLIC LATEX PAINT COLOR: MATCH METAL PANEL MUSKET GRAY

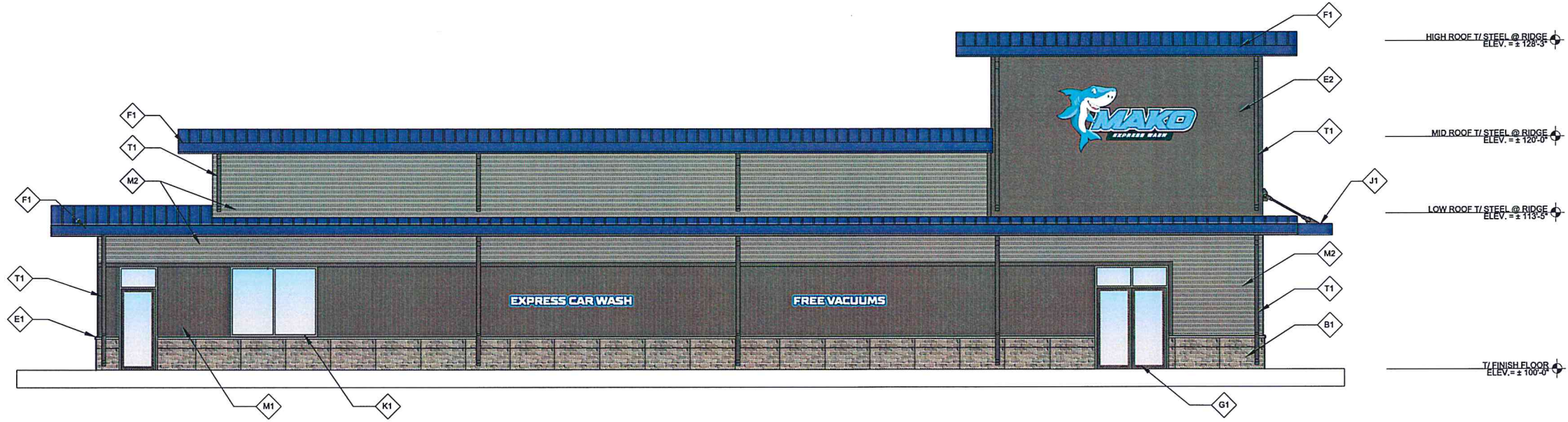
FRONT / WEST ELEVATION:  
M2 = 118.17 S.F.  
TOTAL = 772.53 S.F.  
TOTAL METAL % = 15.3%



1 WEST ELEVATION  
A-1.1/A-2.1 SCALE: 3/16" = 1'-0"

EXECUTIVE  
DIRECTOR  
APPROVAL

4.25.24 Date By *[Signature]*



2 NORTH ELEVATION  
A-1.1/A-2.1 SCALE: 3/16" = 1'-0"

LINFIELD, HUNTER & JUNIUS, INC.  
PROFESSIONAL ENGINEERS, ARCHITECTS  
AND SURVEYORS  
3608 18th Street, Suite 200  
Metairie, Louisiana 70002  
© 2014 by Linfield, Hunter & Junius, Inc.

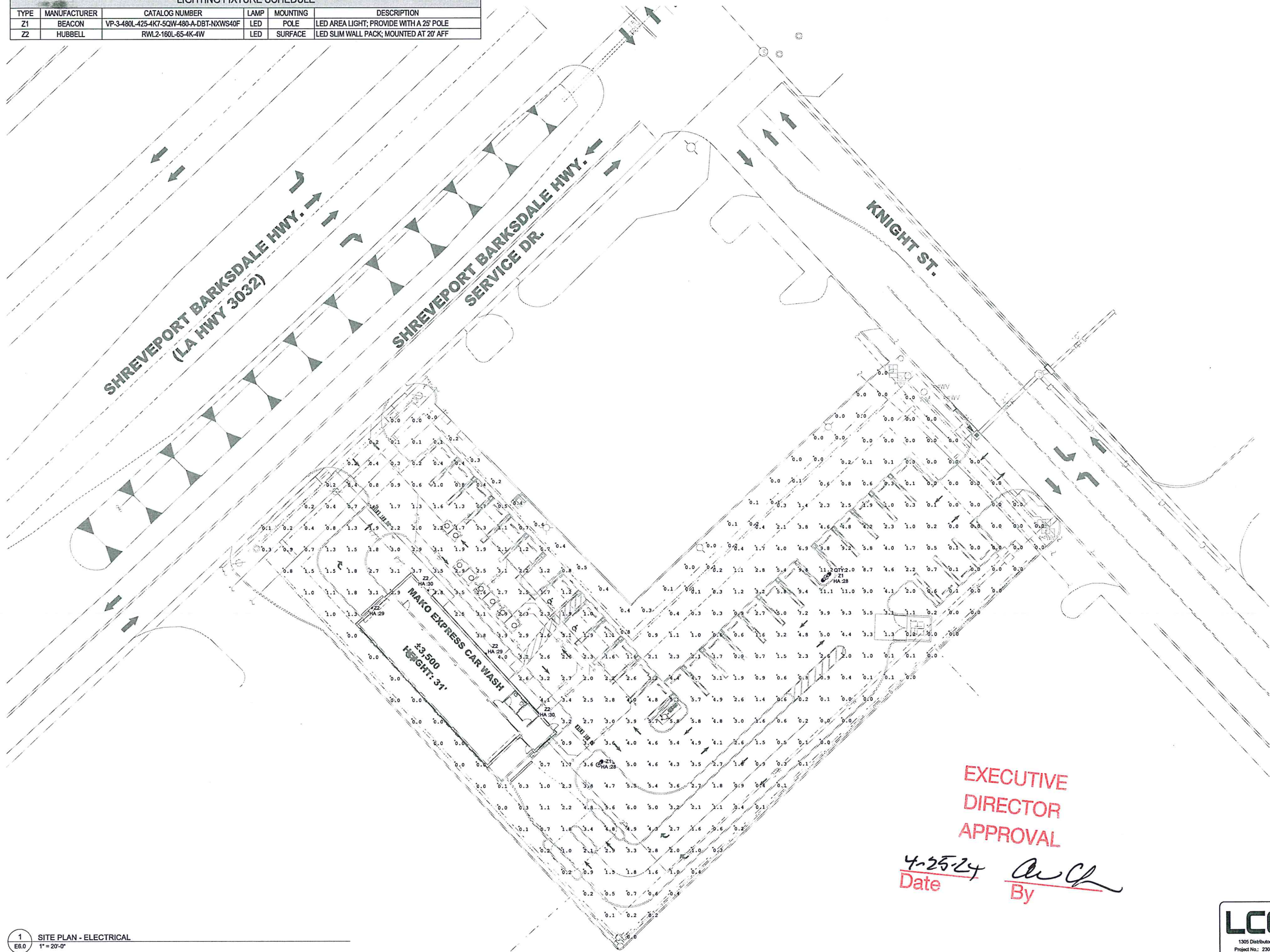
PRELIMINARY  
FOR REVIEW ONLY  
NOT FOR CONSTRUCTION  
THIS DRAWING IS SUBJECT TO  
REVISION, ALTERATION & DELETION

MAKO EXPRESS CAR WASH - SHREVEPORT BARKSDALE HIGHWAY  
SHREVEPORT, LA  
THIS SHEET  
RENDERED EXTERIOR ELEVATIONS  
DRAWN BY LHJ  
CHECKED BY LHJ  
APPROVED BY LHJ

PROJ. NO. 22-145  
DATE 3-20-2024  
SHEET NO.  
A-2.1  
OF SHEETS



LIGHTING FIXTURE SCHEDULE						
TYPE	MANUFACTURER	CATALOG NUMBER	LAMP	MOUNTING	POLE	DESCRIPTION
Z1	BEACON	VP-3-480L-425-4K7-5QW-480-A-DBT-NXWS40F	LED	POLE		LED AREA LIGHT; PROVIDE WITH A 25' POLE
Z2	HUBBELL	RWL2-160L-65-4K-4W	LED	SURFACE		LED SLIM WALL PACK; MOUNTED AT 20' AFF



1 SITE PLAN - ELECTRICAL  
E6.0 1" = 20'-0"

EXECUTIVE  
DIRECTOR  
APPROVAL  
4-25-24 Date By *AC*

**LCG** Lagniappe Consulting Group  
Mechanical-Electrical-Plumbing  
1305 Distributors Row, Ste. K New Orleans, LA, 70123  
Project No: 2304401 Registration #: 7188  
website: www.lcg-mep.com

**LINFIELD, HUNTER & JUNIUS, INC.**  
PROFESSIONAL ENGINEERS,  
ARCHITECTS AND SURVEYORS  
3608 18th Street, Suite 200  
Metairie, Louisiana 70002  
PHONE: (504) 835-5300  
FAX: (504) 835-5350

SEAL  
STATE OF LOUISIANA  
PATRICK J. WEBER  
License No. 44781  
PROFESSIONAL ENGINEER  
ELECTRICAL ENGINEERING  
03/27/2024

REV. NO.	DATE

MAKO EXPRESS CAR WASH - SHREVEPORT BARKS DALE HIGHWAY  
SHREVEPORT, LA  
THIS SHEET  
SITE PHOTOMETRIC PLAN  
DRAWN BY: RML  
CHECKED BY: PJW  
APPROVED BY: LCG

PROJ. NO. 22-145  
DATE 3-13-2024  
SHEET NO.  
**E6.0**  
OF SHEETS



# RATIO Wall

RWL1/RWL2 LED WALLPACK

## FEATURES

- Low profile LED wall luminaire with a variety of IES distributions for lighting applications such as retail, commercial and industrial building mount
- Featuring Micro Strike Optics which maximizes target zone illumination with minimal losses at the house-side, reducing light trespass issues
- Visual comfort standard
- Control options including photo control, occupancy sensing, NX Distributed Intelligence™, Wiscap and 7-Pin with networked controls
- Battery Backup options available for emergency code compliance
- Quick-mount adapter allows easy installation/maintenance
- 347V and 480V versions for industrial applications and Canada
- Stock versions available in 3500lm and 5500lm configurations at 4000K



## CONTROL TECHNOLOGY



## SPECIFICATIONS

### CONSTRUCTION

- Die-cast housing with hidden vertical heat fins that are optimal for heat dissipation while keeping a clean smooth outer surface
- Corrosion resistant, die-cast aluminum housing with powder coat paint finish
- Powder paint finish provides durability in outdoor environments. Tested to meet 1000 hour salt spray rating.

### OPTICS

- Entire optical aperture illuminates to create a larger luminous surface area resulting in a low glare appearance without sacrificing optical performance
- 48 or 160 midpower LEDs
- 3000K, 4000K or 5000K (70 CRI/80 CRI) CCT
- Zero uplight distributions
- LED optics provide IES type II, III and IV distributions. Type II only available in RWL2 configurations.

### INSTALLATION

- Quick-mount adapter provides easy installation to wall or to recessed junction boxes (4" square junction box)
- Designed for direct j-box mount.
- Integral back box contains 1/2" conduit hubs
- Integral back box standard with Dual Driver, Dual Power Feed, NX, Wiscap and battery versions (battery versions for RWL1 only)

### ELECTRICAL

- 120V-277V universal voltage 50/60Hz 0-10V dimming drivers
- 347V and 480V dimmable driver option for all wattages above 35W.

### ELECTRICAL (CONTINUED)

- Ambient operating temperature -40°C to 40°C
- Drivers have greater than .90 power factor and less than 20% Total Harmonic Distortion
- Driver RoHS and IP66
- Field replaceable surge protection device provides 20kA protection meeting ANSI/IEEE C62.41.2 Category C High and Surge Location Category C3; Automatically takes fixture off-line for protection when device is compromised
- Dimming drivers are standard and dimming leads are extended out of the luminaire unless control options require connection to the dimming leads. Must specify if wiring leads are to be greater than 6" standard.

### CONTROLS

- Photo control, occupancy sensor and wireless available for complete on/off and dimming control
- Button photocontrol is suitable for 120-277V operation
- 7-pin ANSI C136.41-2013 photocontrol receptacle option available for twist lock photocontrols or wireless control modules (control accessories sold separately)
- NX Distributed Intelligence™ available with in fixture wireless control module, features dimming and occupancy sensor
- WISCAPE® available with in fixture wireless control module, features dimming and occupancy sensor
- Integral Battery Backup provides emergency lighting for the required 90 minute path of egress
- Battery Backup suitable for operating temperatures -25°C to 40°C. RWL1 battery is 12.5W RWL2 battery is 18W

## RELATED PRODUCTS

Ratio Family Ratio Area Ratio Flood

**EXECUTIVE  
DIRECTOR  
APPROVAL**

4.25.24  
Date

*[Signature]*  
By

### CONTROLS (CONTINUED)

- Dual Driver and Dual Power Feed options creates product configuration with 2 internal drivers for code compliance
- Please consult brand or sales representative when combining control and electrical options as some combinations may not operate as anticipated depending on your application.

### CERTIFICATIONS

- Listed to UL1598 and CSAC22.2#250.0-24 for wet locations
- IP65 rated housing
- This product qualifies as a "designated country construction material" per FAR 52.225-11 Buy American-Construction Materials under Trade Agreements effective 04/23/2020. See Buy American Solutions
- DLC® (DesignLights Consortium Qualified), with some Premium Qualified configurations. Please refer to the DLC website for specific product qualifications at [www.designlights.org](http://www.designlights.org)

### WARRANTY

- 5 year limited warranty
- See [HLI Standard Warranty](#) for additional information

KEY DATA	
Lumen Range	1,300–18,800
Wattage Range	10–155
Efficacy Range (LPW)	119–148
Fixture Projected Life (Hours)	L70>60K
Weights lbs. (kg)	6.5/16.5 (2.9/7.5)



# RATIO WALL

RWL1/RWL2 LED WALLPACK

## ORDERING GUIDE

Example: RWL1-48L-10-3K7-2-UNV-BLS-E

CATALOG #

### ORDERING INFORMATION

Series	# LEDs - Wattage	CCT/CRI	Distribution	Voltage	Color
RWL1 Ratio Wall 1	48L-10 1,000 Lumens <sup>4</sup>	3K7 3000K, 70 CRI	2 IES TYPE II <sup>1</sup>	UNV 120-277V	BLT Black Matte Textured
	48L-15 2,000 Lumens <sup>4</sup>	4K7 4000K, 70 CRI	3 IES TYPE III	120 120V	BLS Black Gloss Smooth
	48L-20 2,500 Lumens <sup>4</sup>	5K7 5000K, 70 CRI	4W IES TYPE IV	208 208V	DBT Dark Bronze Matte Textured
	48L-25 3,500 Lumens			240 240V	DBS Dark Bronze Gloss Smooth
	48L-35 4,500 Lumens			277 277V	GTT Graphite Matte Textured
	48L-45 5,500 Lumens <sup>4</sup>			347 347V	LGS Light Grey Gloss Smooth
RWL2 Ratio Wall 2	160L-45 6,500 Lumens			480 480V	LGT Light Grey Matte Textured
	160L-50 7,500 Lumens				PSS Platinum Silver Smooth
	160L-65 9,500 Lumens				WHT White Matte Textured
	160L-80 11,000 Lumens				WHS White Gloss Smooth
	160L-95 13,000 Lumens				VGTT Verde Green Textured
	160L-115 15,000 Lumens				<b>Color Option</b>
	160L-135 17,500 Lumens				CC Custom Color
	160L-155 19,500 Lumens				

Control Options Network	
NXWE	NX Wireless Enabled (module + radio) <sup>1,7</sup>
NXSPW_F	NX Wireless, PIR Occ. Sensor, Daylight Harvesting <sup>1,5,7</sup>
NXSP_F	NX, PIR Occ. Sensor, Daylight Harvesting <sup>1,5,7</sup>
WIR	Wireless Controls, wiSCAPE™ <sup>2,5</sup>
Stand Alone Sensors	
SCP-8F	Remote control programmable line voltage sensor <sup>3,4</sup>
SCP-20F	Remote control programmable line voltage sensor <sup>3,4</sup>
BTS-14F	Bluetooth® Programmable, PIR Occupancy/Daylight Sensor <sup>10</sup>
BTS-40F	Bluetooth® Programmable, PIR Occupancy/Daylight Sensor <sup>10</sup>
BTSO-12F	Bluetooth® Programmable, PIR Occupancy/Daylight Sensor, up to 12' mounting height <sup>10</sup>
Control Options	
7PR_	7-Pin Receptacle <sup>6</sup>

Options*	
F	Fusing <sup>3</sup>
E	Emergency Battery Backup <sup>7,8,9</sup>
EH	Emergency Battery w/ Heater Option <sup>7,8</sup>
2DR	Dual Driver <sup>16,11</sup>
2PF	Dual Power Feed <sup>16,11</sup>
PC	Button Photocontrol <sup>9</sup>

- Notes:
- Only available with RWL2
  - wiSCAPE Gateway required for system programming
  - Specific voltage selection is required
  - Not available with 347/480V
  - Replace "\_" with "14" for up to 14' mounting height, "40" for up to 40' mounting height
  - This item is located in the integral backbox which will be automatically added onto the fixture if chosen.
  - This item is located in the integral backbox for RWL1 configurations only.
  - Option only available at 120 or 277V
  - 2DR and 2PF can't be combined with E and EH due to space limitations
  - Not available in RWL1 or 2 PF
  - Available only in UNV in 25, 35 and 45 Watt in RWL1; Not available in RWL1 10, 15 and 25-Watt.
  - \* Based on space limitations, some options may not be able to be combined

### STOCK ORDERING INFORMATION

Catalog Number	Lumens	Wattage	LED Count	CCT/CRI	Voltage	Distribution	Finish
RWL1-48L-25-4K-3	3500lm	25	48L	4000K/70CRI	120-277V	Type III	Dark Bronze Textured
RWL1-48L-25-4K-4W	3500lm	25	48L	4000K/70CRI	120-277V	Type IV Wide	Dark Bronze Textured
RWL1-48L-45-4K-3	5500lm	45	48L	4000K/70CRI	120-277V	Type III	Dark Bronze Textured
RWL1-48L-45-4K-4W	5500lm	45	48L	4000K/70CRI	120-277V	Type IV Wide	Dark Bronze Textured

### CONTROLS

Control Options	
Standalone	
SCPREMOTE	Order at least one per project location to program and control

### ACCESSORIES AND REPLACEMENT PARTS - MADE TO ORDER

Catalog Number	Description
<input type="checkbox"/> WP-BB-XXX	Accessory for conduit entry <sup>4</sup>

Notes:  
1 replace "xxx" with color option



# RATIO WALL

RWL1/RWL2 LED WALLPACK

## PERFORMANCE DATA

Description	Nominal Wattage	System Watts	Dist. Type	5K (5000K NOMINAL 70 CRI)					4K (4000K NOMINAL 70 CRI)					3K (3000K NOMINAL 70 CRI)				
				Lumens	LPW	B	U	G	Lumens	LPW	B	U	G	Lumens	LPW	B	U	G
RWL1	10	10.1	3	1362	135	0	0	1	1355	134	0	0	1	1303	129	0	0	1
			4W	1343	133	0	0	1	1336	132	0	0	1	1285	127	0	0	1
	15	14.5	3	1972	136	1	0	1	1962	135	1	0	1	1887	130	1	0	1
			4W	1945	134	0	0	1	1935	133	0	0	1	1861	128	0	0	1
	20	19.9	3	2722	137	1	0	1	2709	136	1	0	1	2605	131	1	0	1
			4W	2685	135	1	0	1	2672	134	1	0	1	2569	129	1	0	1
	25	28.0	3	3749	134	1	0	1	3732	133	1	0	1	3588	128	1	0	1
			4W	3698	132	1	0	1	3680	131	1	0	1	3538	126	1	0	1
	35	36.9	3	4751	129	1	0	2	4728	128	1	0	2	4546	123	1	0	1
			4W	4685	127	1	0	2	4663	126	1	0	2	4483	121	1	0	2
	45	46.5	3	5812	125	1	0	2	5784	124	1	0	2	5562	120	1	0	2
			4W	5731	123	1	0	2	5704	123	1	0	2	5485	118	1	0	2
RWL2	45	46.1	2	6701	145	1	0	2	6668	145	1	0	2	6412	139	1	0	2
			3	6812	148	1	0	2	6780	147	1	0	2	6519	141	1	0	2
			4W	6678	145	1	0	2	6646	144	1	0	2	6390	139	1	0	2
	50	54.0	2	7747	143	1	0	2	7710	143	1	0	2	7413	137	1	0	2
			3	7876	146	1	0	2	7838	145	1	0	2	7537	140	1	0	2
			4W	7720	143	1	0	2	7683	142	1	0	2	7388	137	1	0	2
	65	67.2	2	9539	142	1	0	2	9494	141	1	0	2	9129	136	1	0	2
			3	9699	144	2	0	2	9652	144	2	0	2	9281	138	2	0	2
			4W	9507	141	2	0	2	9461	141	2	0	2	9097	135	2	0	2
	80	80.8	2	11228	139	2	0	2	11174	138	2	0	2	10745	133	2	0	2
			3	11416	141	2	0	2	11361	141	2	0	2	10924	135	2	0	2
			4W	11190	138	2	0	2	11136	138	2	0	2	10708	133	2	0	2
	95	93.2	2	13148	141	2	0	2	13085	140	2	0	2	12582	135	2	0	2
			3	13368	143	2	0	2	13304	143	2	0	2	12792	137	2	0	2
			4W	13103	141	2	0	2	13040	140	2	0	2	12539	135	2	0	2
	115	109.8	2	15102	138	2	0	3	15030	137	2	0	3	14452	132	2	0	3
			3	15354	140	2	0	3	15281	139	2	0	3	14693	134	2	0	3
			4W	15050	137	2	0	3	14978	136	2	0	3	14402	131	2	0	3
	135	137.1	2	17533	128	2	0	3	17449	127	2	0	3	16778	122	2	0	3
			3	17826	130	2	0	3	17740	129	2	0	3	17058	124	2	0	3
			4W	17473	127	2	0	3	17389	127	2	0	3	16720	122	2	0	3
	155	156.8	2	19495	124	2	0	3	19402	124	2	0	3	18656	119	2	0	3
			3	19821	126	2	0	3	19726	126	2	0	3	18967	121	2	0	3
			4W	19542	125	2	0	3	19448	124	2	0	3	18700	119	2	0	3



# RATIO WALL

RWL1/RWL2 LED WALLPACK

## LUMINAIRE AMBIENT TEMPERATURE FACTOR (LATF)

Ambient Temperature		Lumen Multiplier
0°C	32°F	1.03
10°C	50°F	1.01
20°C	68°F	1.00
25°C	77°F	1.00
30°C	86°F	0.99
40°C	104°F	0.98
50°C	122°F	0.97

Use these factors to determine relative lumen output for average ambient temperatures from 0-40°C (32-104°F).

## PROJECTED LUMEN MAINTENANCE

Ambient Temperature	OPERATING HOURS					
	0	25,000	TM-21-11 L90 36,000	50,000	100,000	L70 (Hours)
25°C / 77°F	1.00	0.97	0.96	0.95	0.91	408,000
40°C / 104°F	0.99	0.96	0.95	0.94	0.89	356,000

## ELECTRICAL DATA

# OF LEDS	Nominal Wattage	Input Voltage	Oper. Current (Amps)	System Power (Watts)
RWL1	10	120	0.08	10.1
		208	0.05	
		240	0.04	
		277	0.04	
		347	0.03	
		480	0.02	
	15	120	0.12	14.5
		208	0.07	
		240	0.06	
		277	0.05	
		347	0.04	
		480	0.03	
	20	120	0.17	19.9
		208	0.10	
		240	0.08	
		277	0.07	
		347	0.06	
		480	0.04	
	25	120	0.23	28.0
		208	0.13	
		240	0.12	
		277	0.10	
		347	0.08	
		480	0.06	
35	120	0.31	36.9	
	208	0.18		
	240	0.15		
	277	0.13		
	347	0.11		
	480	0.08		
45	120	0.39	46.5	
	208	0.22		
	240	0.19		
	277	0.17		
	347	0.13		
	480	0.10		

# OF LEDS	Nominal Wattage	Input Voltage	Oper. Current (Amps)	System Power (Watts)
RWL2	45	120	0.38	46.1
		208	0.22	
		240	0.19	
		277	0.17	
		347	0.13	
		480	0.10	
	50	120	0.45	54.0
		208	0.26	
		240	0.23	
		277	0.19	
		347	0.16	
		480	0.11	
	65	120	0.56	67.2
		208	0.32	
		240	0.28	
		277	0.24	
		347	0.19	
		480	0.14	
	80	120	0.67	80.8
		208	0.39	
		240	0.34	
		277	0.29	
		347	0.23	
		480	0.17	
	95	120	0.78	93.2
		208	0.45	
		240	0.39	
		277	0.34	
		347	0.27	
		480	0.19	
	115	120	0.92	109.8
		208	0.53	
		240	0.46	
		277	0.40	
		347	0.32	
		480	0.23	
	135	120	1.14	137.1
		208	0.66	
		240	0.57	
		277	0.49	
		347	0.40	
		480	0.29	
	155	120	1.31	156.8
		208	0.75	
		240	0.65	
		277	0.57	
		347	0.45	
		480	0.33	



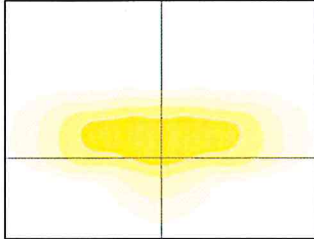
# RATIO WALL

RWL1/RWL2 LED WALLPACK

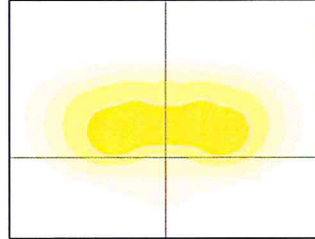
## PHOTOMETRY

Mounting Height: 30ft

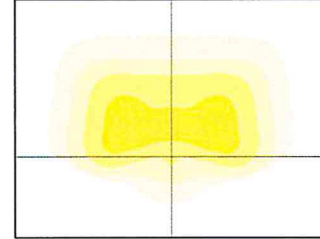
Type II



Type III

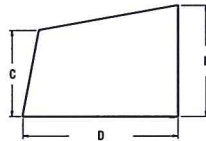
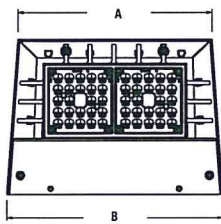


Type VI



## DIMENSIONS

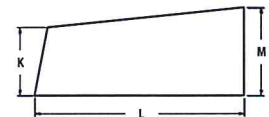
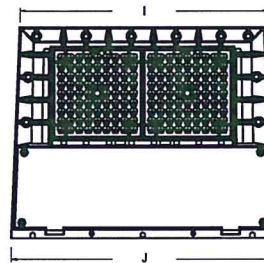
RWL1



A	B	C	D	E
8.7"	9.7"	3.9"	7.0"	5.0"
221mm	246mm	99mm	178mm	127mm

Weight
6.5 lbs (2.95 kgs)

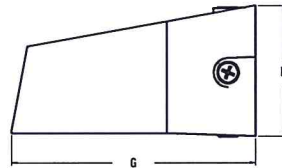
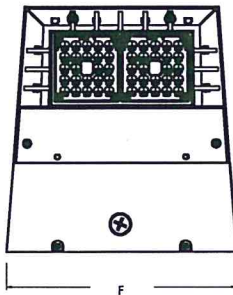
RWL2



I	J	K	L	M
14.0"	15.0"	3.9"	12.0"	5.0"
356mm	381mm	99mm	305mm	127mm

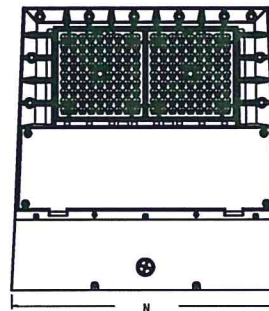
Weight
16.5 lbs (7.48 kgs)

RWL1 with  
Integral Back Box



F	G	H
10.4"	11.0"	5.9"
264mm	279mm	150mm

RWL2 with  
Integral Back Box



N	O	P
15.4"	16.0"	5.5"
391mm	406mm	140mm

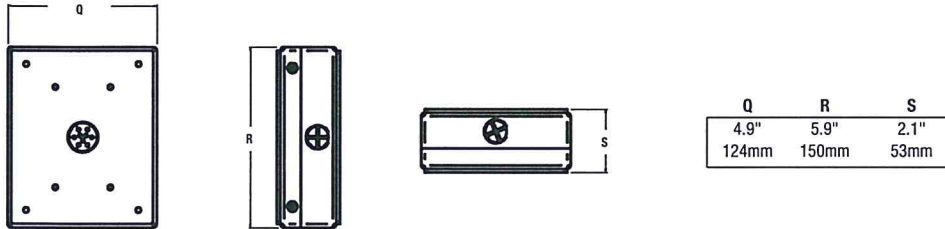


# RATIO WALL

RWL1/RWL2 LED WALLPACK

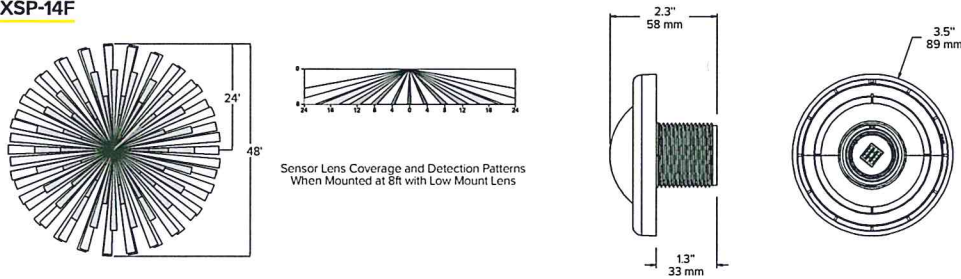
## DIMENSIONS (CONTINUED)

### Back Box Accessory

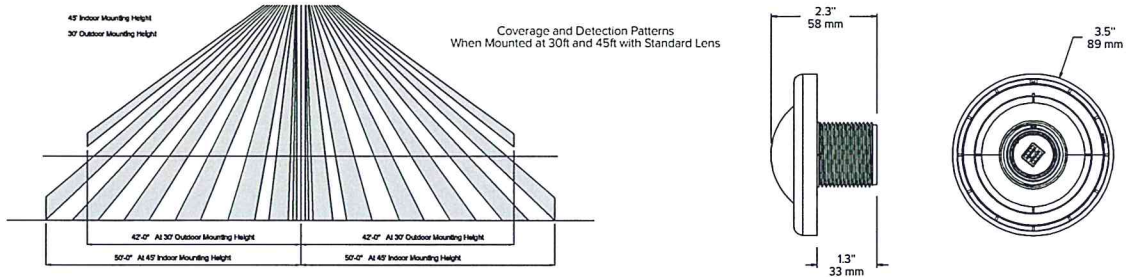


## ADDITIONAL INFORMATION

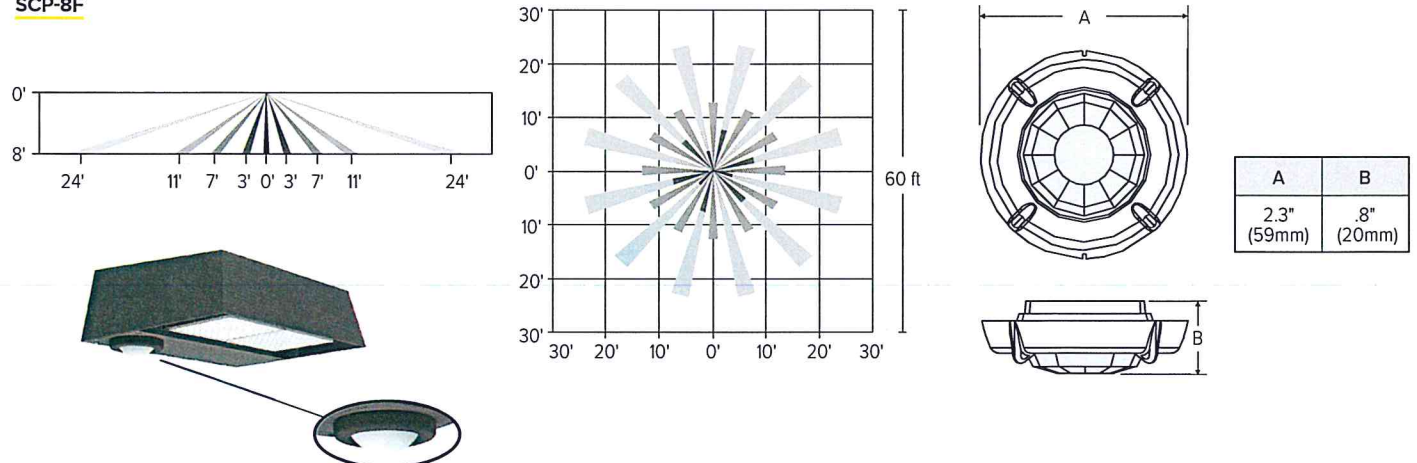
### NXSP-14F



### NXSP-40F



### SCP-8F

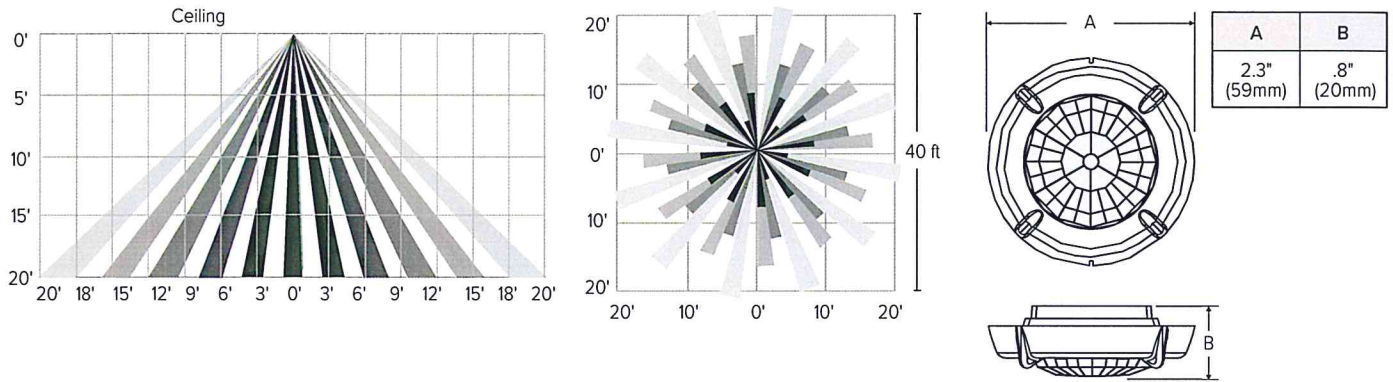




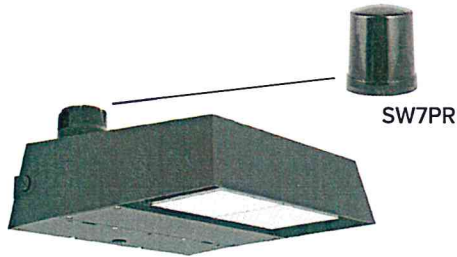
# RATIO WALL

RWL1/RWL2 LED WALLPACK

## SCP-20F



## SITESYNC 7-PIN MODULE



- SiteSync features in a new form
- Available as an accessory for new construction or retrofit applications (with existing 7-Pin receptacle)