

A NEW FIRE STATION FOR CITY OF SHREVEPORT SHREVEPORT FIRE DEPARTMENT - FIRE STATION #14

3880 GREENWOOD ROAD
SHREVEPORT, LOUISIANA 71109
IFB #23-037



EXECUTIVE
DIRECTOR
APPROVAL

4-26-24
Date By

PROJECT ASSOCIATES

ARCHITECT
RUSSELL G. DeLANCY, AIA, ARCHITECT
505 TRAVIS STREET, SUITE 560
SHREVEPORT, LOUISIANA 71101
(318) 673-7868

MECHANICAL & ELECTRICAL ENGINEERING
EMA ENGINEERING & CONSULTING, INC.
9441 STEVENS ROAD, SUITE 200
SHREVEPORT, LOUISIANA 71106
(318) 425-4500

CIVIL & STRUCTURAL ENGINEERING
COTHREN, GRAFF, SMOAK ENGINEERING, INC.
6305 WESTPORT AVENUE
SHREVEPORT, LOUISIANA 71129
(318) 687-3732

CITY ADMINISTRATION

CITY OF SHREVEPORT
TOM ARCENEUX - MAYOR
TOM DARK - CHIEF ADMINISTRATIVE OFFICER

CITY COUNCIL

WILLIE BRADFORD - DISTRICT A
GARY BROOKS - DISTRICT B
JOHN NICKELSON - DISTRICT C
GRAYSON BOUCHER - DISTRICT D
ALAN JACKSON - DISTRICT E
JAMES GREEN - DISTRICT F
URSULA BOWMAN - DISTRICT G

GENERAL NOTES

- ALL WORK SHALL CONFORM WITH THE FOLLOWING CODES:
 - 2023 LOUISIANA STATE UNIFORM CONSTRUCTION CODE
 - 2021 INTERNATIONAL BUILDING CODE
 - 2021 INTERNATIONAL EXISTING BUILDING CODE
 - 2021 INTERNATIONAL MECHANICAL CODE
 - 2021 INTERNATIONAL PLUMBING CODE
 - 2021 INTERNATIONAL FUEL GAS CODE
 - 2015 NFPA 101 LIFE SAFETY CODE REQUIREMENTS
 - 2010 ADA-ABA ACCESSIBILITY GUIDELINES
 - 2020 NATIONAL ELECTRIC CODE
- ALL WORK SHALL CONFORM TO ALL OTHER PERTINENT CODES, REGULATIONS, LAWS AND ORDINANCES AS REQUIRED BY THE CITY OF SHREVEPORT AND THE STATE OF LOUISIANA.
- ALL PLAN DIMENSIONS INDICATED ARE TO COLUMN CENTERLINE, TO FACE OF CONCRETE, FACE OF PARTITION, OR TO FACE OF MASONRY UNLESS NOTED OTHERWISE.
- CONTRACTOR SHALL BE RESPONSIBLE FOR VERIFYING ALL DIMENSIONS IN THE FIELD AND, IN THE EVENT OF DISCREPANCY, REPORTING SUCH DISCREPANCY TO THE ARCHITECT, BEFORE COMMENCING WORK.
- TEMPORARY BARRICADES FOR THE PROTECTION OF PEDESTRIANS SHALL BE PROVIDED AS REQUIRED BY BOSSIER CITY AND/OR THE STATE OF LOUISIANA.
- DURING CONSTRUCTION PROVIDE A PORTABLE FIRE EXTINGUISHER WITH A RATING OF 2A:10BC WITHIN A 75 FOOT TRAVEL DISTANCE OF ALL PORTIONS OF THE BUILDING ON EACH FLOOR. LOCATE AS DIRECTED BY THE LOUISIANA STATE FIRE MARSHAL.
- EXIT DOORS SHALL BE OPENABLE FROM THE INSIDE WITHOUT THE USE OF A KEY, SPECIAL KNOWLEDGE OR EFFORT.

ABBREVIATIONS

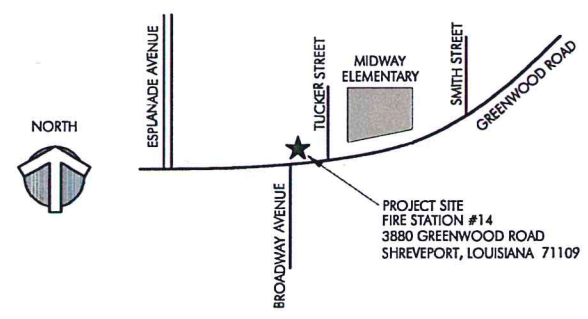
@	AT	HORIZ.	HORIZONTAL
A.F.F.	ABOVE FINISHED FLOOR	I.D.	INSIDE DIAMETER
ALUM.	ALUMINUM	INT.	INTERIOR
ANOD.	ANODIZED	JAN	JANITORS CLOSET
APPROX.	APPROXIMATELY	LAV.	LAVATORY
BD.	BOARD	LLH	LONG LEG HORIZONTAL
BLDG.	BUILDING	LLV.	LONG LEG VERTICAL
BLK	BLOCK	MANUF.	MANUFACTURER
BML	BEAM	MAS	MASONRY
C	COMPACT STALL	MAX	MAXIMUM
C.B.	CATCH BASIN	MECH.	MECHANICAL
C.I.P.	CAST IN PLACE	M.H.	MANHOLE
C.J.	CONTROL JOINT	MIN	MINIMUM
C.L.	CENTER LINE	MISC.	MISCELLANEOUS
CLR.	CLEAR	M.O.	MASONRY OPENING
CMU	CONCRETE MASONRY UNIT	MTL	METAL
COL	COLUMN	N.I.C.	NOT IN CONTRACT
CONC.	CONCRETE	O.C.	ON CENTER
DBL	DOUBLE	O.D.	OUTSIDE DIAMETER
DET.	DETAIL	OPG	OPENING
DIA	DIAMETER	P.L.	PROPERTY LINE
DIM.	DIMENSION	P.P.	POWER POLE
DN.	DOWN	PR	PERIMETER
AP	ACCESSIBLE PARKING	R.D.	ROOF DRAIN
D.S.P.	DRY STANDPIPE	REINF.	REINFORCED (ING)
DWG.S.	DRAWINGS	REQD	REQUIRED
EA	EACH	R.O.	ROUGH OPENING
E.F.D.	EMERGENCY FLOOR DRAIN	S	STALL WIDTH
ELEC.	ELECTRICAL	SCHED.	SCHEDULE
EQ.	EQUAL	S.D.	STORM DRAIN
EWC	ELECTRIC WATER COOLER	SECT.	SECTION
EXIST.	EXISTING	SHT	SHEET
EXT.	EXTERIOR	SIM.	SIMILAR
F.D.C.	FIRE DEPT. CONNECTION (INPUT)	SP	SPRINKLER RISER
F.D.H.C.	FIRE DEPT. HOSE CONNECTION (2-1/2" & 1-1/2" OUTLETS)	SPECS	SPECIFICATIONS
FEC	FIRE EXTINGUISHER CABINET	S/S	SERVICE SINK
FIN.FL.	FINISH FLOOR	STD.	STANDARD
F.H.C.	FIRE HOSE CABINET	STL	STEEL
FIN.	FINISHED	STRUC.	STRUCTURAL
F.L.	FLOW LINE	T.C.	TOP OF CURB
FLR	FLOOR	TEL.	TELEPHONE
F.O.C.	FACE OF CONCRETE	T.O.C.	TOP OF CONCRETE
F.O.S.	FACE OF STUD	T.O.S.	TOP OF STEEL
F.O.M.	FACE OF MASONRY	T.S.	TOP OF SPANDREL
GA.	GAUGE	T.W.	TOP OF WALK, WALL
GALV.	GALVANIZED	TFP.	TYPICAL
GEN.	GENERAL	U.N.O.	UNLESS NOTED OTHERWISE
G.I.	GALVANIZED IRON	W/	WITH
GYP.	GYPSUM	W/O	WITHOUT
HT.	HEIGHT	W.C.	WATER CLOSET
H.B.	HOSE BIB	W.S.P.	WET STANDPIPE
H.M.	HOLLOW METAL	W.W.M.	WELDED WIRE MESH
H.P.	HIGHPOINT	W.P.	WATERPROOF

DRAWING INDEX

COVER SHEET	1
EXISTING SITE SURVEY	CD101
SITE PLAN	CS101
PAVEMENT JOINT PLAN	CS401
PAVEMENT DETAILS	CS501
SITE UTILITY PLAN	CU101
LIFE SAFETY PLAN	A1.01
FLOOR PLAN	A2.01
REFLECTED CEILING PLAN	A2.02
ROOM FINISH PLAN / FINISH SCHEDULE	A2.03
FLOOR FINISH PLAN / MATERIALS LEGEND	A2.04
ROOF PLAN	A2.05
ENLARGED FLOOR PLANS	A2.06
EXTERIOR ELEVATIONS	A3.01
BUILDING SECTIONS	A3.02
WALL SECTIONS	A3.03
WALL SECTIONS	A3.04
DOOR SCHEDULE / DOOR TYPES	A4.01
DOOR DETAILS / WINDOW DETAILS	A4.02
DOOR DETAILS / WINDOW DETAILS	A4.03
OVERHEAD DOOR DETAILS / DOOR DETAILS	A4.04
WINDOW TYPES / CEILING DETAILS / AWNING DETAIL	A4.05
PARTITION TYPES	A4.06
ACCESSIBLE SIGNAGE / TYPICAL MOUNTING HEIGHTS / WALL BASE DETAILS	A4.07
INTERIOR ELEVATIONS	A5.01
INTERIOR ELEVATIONS	A5.02
INTERIOR ELEVATIONS	A5.03
INTERIOR ELEVATIONS	A5.04
STAINLESS STEEL CABINET SECTIONS	A6.01
MILLWORK SECTIONS	A6.02
FIRE FIGHTER GEAR LOCKERS / CAPTAINS GEAR LOCKERS	A6.03
MILLWORK SECTIONS	A6.04
PLANTING PLAN / PLANTING DETAILS	L1.01
IRRIGATION PLAN	L2.01
FOUNDATION PLAN	S81.01
FOUNDATION DETAILS	S85.01
MECHANICAL FLOOR PLAN	MH1.1
MECHANICAL FLOOR PLAN	MH2.1
MECHANICAL DETAILS	MH2.2
MECHANICAL SCHEDULES	MH8.1
ELECTRICAL SITE PLAN	ES1.1
ELECTRICAL FLOOR PLAN	EP1.1
ELECTRICAL LEGEND / ELECTRICAL GENERAL NOTES / ELECTRICAL DETAILS	EP7.1
ELECTRICAL DETAILS	EP7.2
ELECTRICAL DETAILS	EP7.3
PANEL SCHEDULES	EP8.1
LIGHTING FLOOR PLAN	EL1.1
LIGHTING DETAILS	EL7.1
LIGHTING CONTROL CHART / LUMINAIRE SCHEDULE	EL8.1
ELECTRICAL COMMUNICATIONS FLOOR PLAN	ET1.1
ELECTRICAL COMMUNICATIONS SYMBOLS / GENERAL NOTES	ET7.1
PLUMBING SITE PLAN	PS1.1
PLUMBING FLOOR PLAN	PL1.1
PLUMBING DETAILS	PL7.1
PLUMBING DETAILS	PL7.2
PLUMBING FIXTURE SCHEDULE / PLUMBING RISERS	PL8.1
FIRE PROTECTION FLOOR PLAN	FP1.1

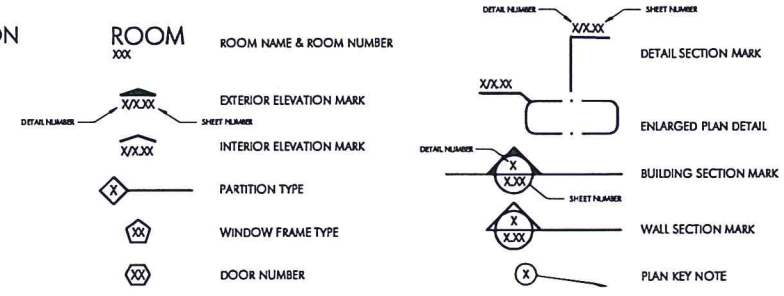


PROJECT LOCATION MAP



SHREVEPORT PUBLIC ASSEMBLY & RECREATION
SHELLY RAGLE - DIRECTOR

DRAWING SYMBOLS



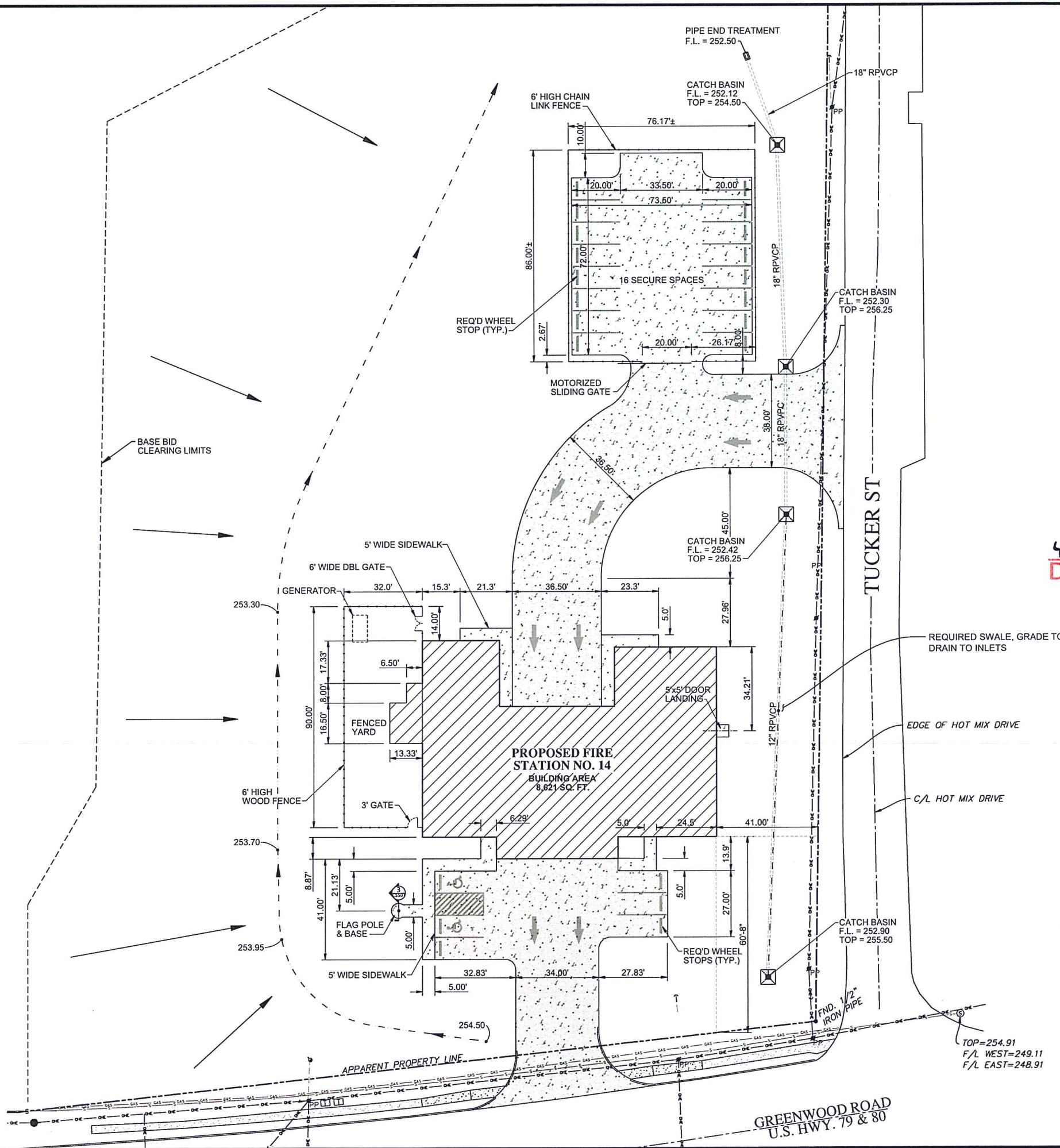
REVISIONS		
NO.	DATE	BY
1	06.01.2023	KRS

GENERAL CORRECTIONS

A NEW FIRE STATION FOR
CITY OF SHREVEPORT
 SHREVEPORT FIRE DEPARTMENT - FIRE STATION #14
 3880 GREENWOOD ROAD
 SHREVEPORT, LOUISIANA 71109

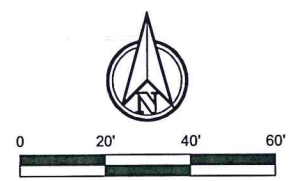


CS101



EXECUTIVE DIRECTOR APPROVAL

4-26-24 aa
 Date By



PAVEMENT LEGEND	
SYMBOL	DESCRIPTION
	= 4" CONCRETE PAVING (3000 PSI @ 28 DAYS)
	= 8" CONCRETE PAVING 4000 PSI @ 22 DAYS w/ #3 BARS @ 18" O.C. EA. WAY

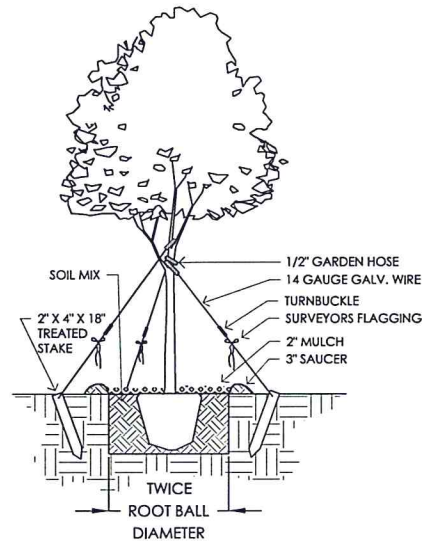
NOTES	
NOTE	DESCRIPTION
1.	FINISH FLOOR ELEVATION = 260.00'

CGS COTHREN, GRAFF, SMOAK ENGINEERING, INC.
 CIVIL • ENVIRONMENTAL • SURVEY • STRUCTURAL • MECHANICAL • ELECTRICAL
 112 Horn Avenue • Shreveport, LA 71101 • PH: 318-647-1712
 FIRM LICENSE - LA 2536 • AL 3531 • TX 1754

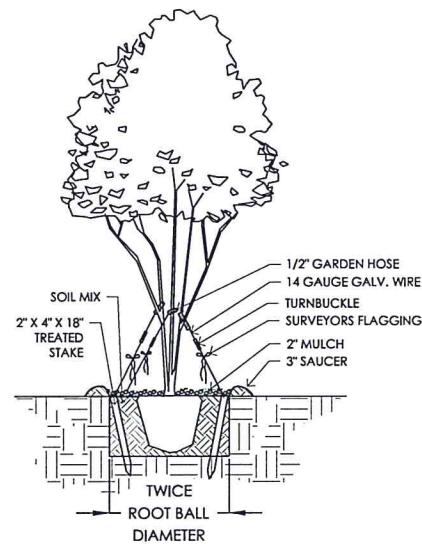
SITE PLAN



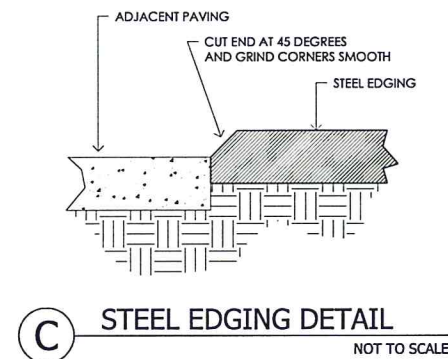
PLANT MATERIALS LIST				
QTY	COMMON NAME	BOTANICAL NAME	SIZE	NOTES
9	CRAPE MYRTLE	LAGERSTROEMIA INDICA	30 GAL	8-10' HEIGHT, 4' SPREAD, VARIETY 'NATCHEZ WHITE'
62	DAYLILY	HEMEROCALLIS FULVA	1 GAL	VARIETY 'HYPERION YELLOW'
5	DWARF SASANQUA	CAMELLIA SASANQUA	3 GAL	15" HEIGHT, 15" SPREAD, VARIETY 'SHI SHI GASHERA'
79	DWARF YAUPON	ILEX VOMITORIA 'NANA'	3 GAL	15" HEIGHT, 15" SPREAD, VARIETY 'STOKES DWARF'
27	INDIAN HAWTHORN	RAPHIOLEPIS INDICA	3 GAL	15" HEIGHT, 15" SPREAD, VARIETY 'CLARA'
2	LANTANA	LANTANA CAMARA	1 GAL	
530	LINEAR FEET OF EDGING			
134	LIRIOPE	LIRIOPE MUSCARI	1 GAL	7-12 BIBBS PER POT, VARIETY 'WEBSTER WIDELEAF'
15	MAIDEN GRASS	MISCANTHUS SINENSIS 'GRACILLIMUS'	3 GAL	18" HEIGHT, 18" SPREAD
3	SHUMARD OAK	QUERCUS SHUMARDII	2-1/2" CAL	10-12' HEIGHT, 4' SPREAD
1,320	SQUARE FEET OF BED PREPARATION			
9,220	SQUARE FEET OF BERMUDA SEED	CYNODON DACTYLON		
5,955	SQUARE YARDS OF BERMUDA SOD	CYNODON DACTYLON		
6	WILLOW OAK	QUERCUS PHELLOS	2-1/2" CAL	10-12' HEIGHT, 4' SPREAD
29	YELLOW FLAG IRIS	IRIS PSEUDACORUS	1 GAL	



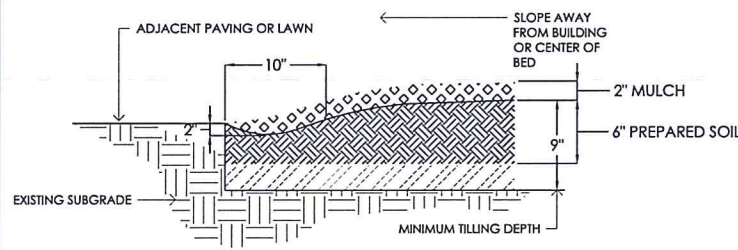
A TREE PLANTING DETAIL
NOT TO SCALE
2" CALIPER AND LARGER



B TREE PLANTING DETAIL
NOT TO SCALE
MULTI-STEM TREES



C STEEL EDGING DETAIL
NOT TO SCALE



D BED PREPARATION DETAIL
NOT TO SCALE

PLANTING NOTES:

QUANTITIES SHOWN ON PLANT MATERIALS LIST ARE PROVIDED AS AN AID TO THE CONTRACTOR AND SHOULD BE VERIFIED BY THE BIDDER.

CONSULT ARCHITECTS / ENGINEER'S PLANS FOR LOCATION OF UNDERGROUND UTILITIES.

STEEL EDGING IS REQUIRED BETWEEN ALL BEDS (MASSED SHRUBS AND GROUNDCOVERS AND GRASS).

STEEL EDGING IS NOT REQUIRED WHERE BEDS ABUT PAVEMENT OR WALLS OR AROUND PIT PLANTED PLANTS.

COORDINATE WORK WITH IRRIGATION CONTRACTOR - PLANT LOCATIONS TAKE PRIORITY OVER PIPE LOCATIONS.

HAVE LOUISIANA ONE CALL LOCATE ALL UNDERGROUND UTILITIES BEFORE BEGINNING WORK.

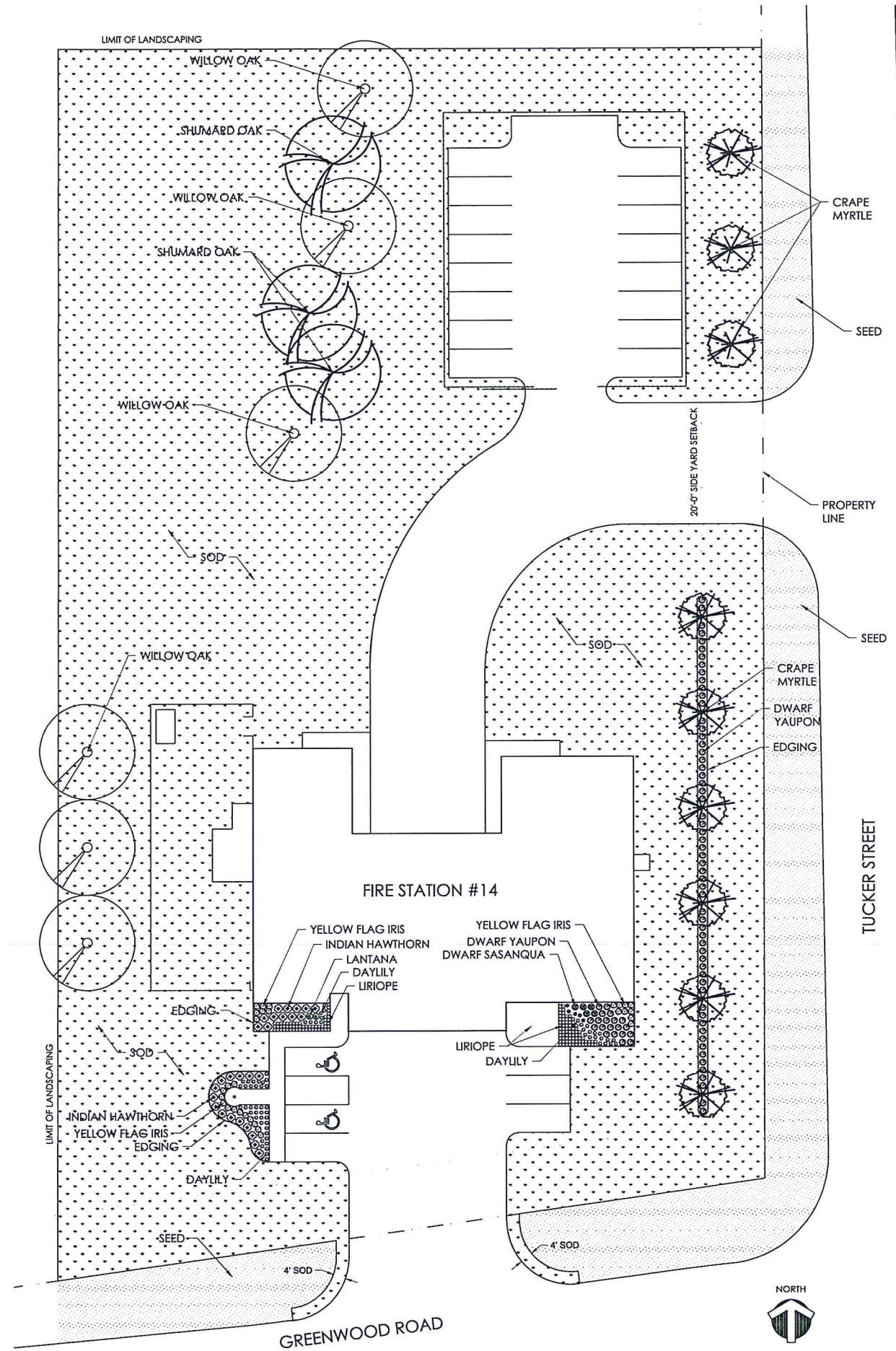
SEED ANY AREAS THAT ARE DISTURBED BY CONSTRUCTION.

PERFORM ALL WORK IN ACCORDANCE TO CITY OF SHREVEPORT CODES AND ORDINANCES.

CUT 45 DEGREE ANGLE ON STEEL EDGING WHERE EDGING ABUTS THE PAVEMENT.

**EXECUTIVE
DIRECTOR
APPROVAL**







4-26-27 *Ch. C. M. L.*
Date By











PLANTING PLAN

LEGEND

SYMBOL DESCRIPTION

-  TORO 570 - 8-Q
-  TORO 570 - 8-H
-  TORO 570 - 12-Q
-  TORO 570 - 12-H
-  TORO 570 - 12-270
-  TORO 570 - 12-F

-  HUNTER MODEL 3PGP - ADJ WITH 4 GPM NOZZLE
-  TORO 250 SERIES 2" ELECTRIC VALVE
-  2" FBCO PRESSURE VACUUM BREAKER
-  CONTROLLER - TORO EVOLUTION SERIES (4 STATIONS)
-  WATER METER

-  3" SLEEVE (CAP FOR FUTURE USE)
-  LATERAL LINE
-  2" PRESSURE LINE

NOTES:

- CONSULT ARCHITECT'S AND ENGINEER'S PLANS FOR LOCATION OF UNDERGROUND UTILITIES.
- WHERE MODEL 570 SPRAY HEADS ARE CALLED FOR, PROVIDE 4" POP-UPS IN TURF AREAS AND 12" HI-POPS IN GROUND COVER AREAS AND SHRUB RISERS IN SHRUB AREAS.
- COORDINATE WORK WITH LANDSCAPE CONTRACTOR - PLANT LOCATIONS TAKE PRIORITY OVER PIPE LOCATIONS.
- LOCATE CONTROLLER INSIDE OF BUILDING (AUXILIARY ROOM 112) AS INDICATED ON PLAN. A 110 VOLT OUTLET AND 1-1/2" CONDUIT TO THE ADJACENT LAWN AREA IS PROVIDED.
- ALL PIPE AND CONTROL WIRE UNDER PAVEMENT TO BE IN SLEEVES (SEE SPECIFICATIONS).
- VERIFY MINIMUM 20 PSI OPERATING PRESSURE IN EACH ZONE - BEFORE BEGINNING INSTALLATION.
- PLACE ALL VALVES IN 10" DIA. BOXES.
- PROVIDE TAP INTO EXISTING WATER MAIN.
- PERFORM ALL WORK IN ACCORD WITH LOCAL CODES.
- FOR CLARITY, 1/2" PIPE IS NOT LABELED ON THIS DRAWING.

GALLONAGE REQUIREMENTS

SECTION	GALLONS
1	9.2
2	17.8
3	16
4	30
5	0
6	0
7	0
8	0
9	0
10	0
11	0
12	0

PIPE SIZING

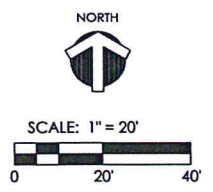
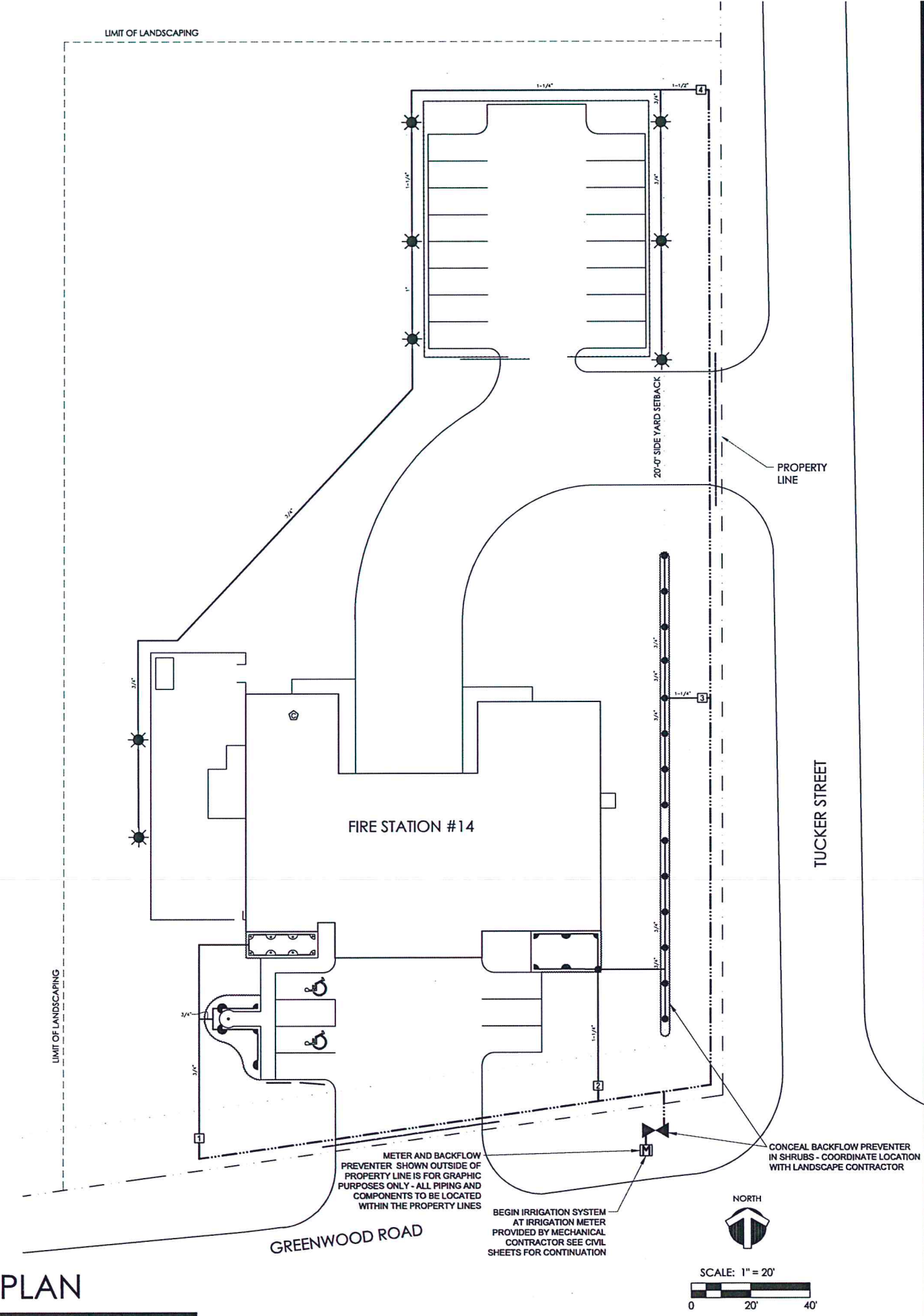
PIPE SIZE	GALLONS PER MINUTE
1/2"	0 - 5
3/4"	6 - 10
1"	11 - 15
1 1/4"	16 - 25
1 1/2"	26 - 40
2"	41 AND ABOVE

**EXECUTIVE
DIRECTOR
APPROVAL**

4-26-24
Date

[Signature]
By

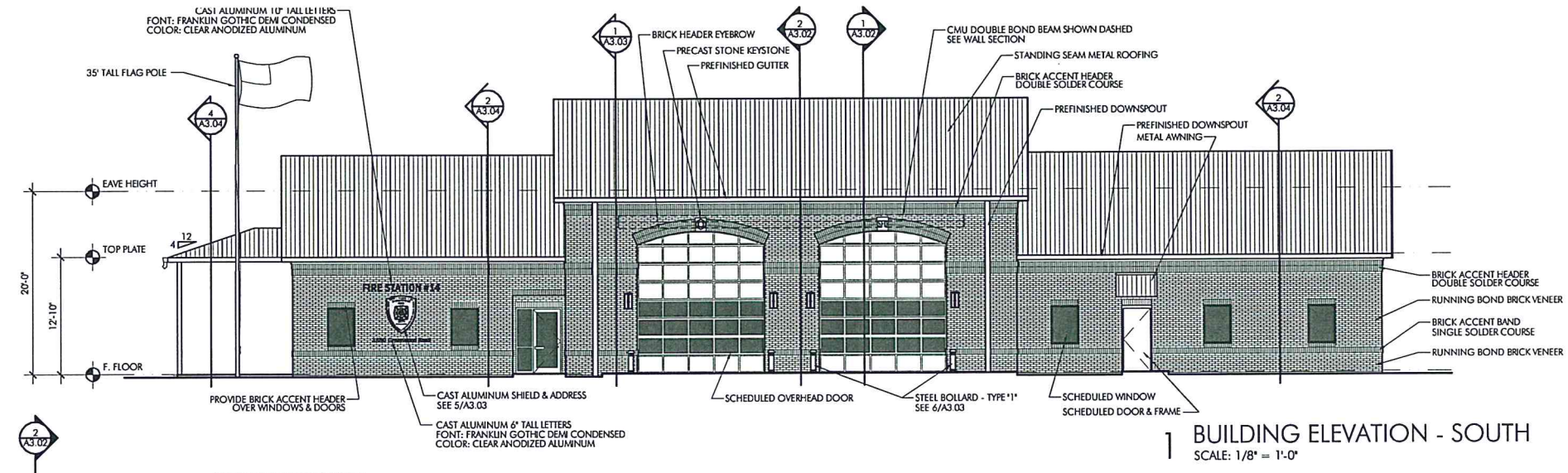
IRRIGATION PLAN



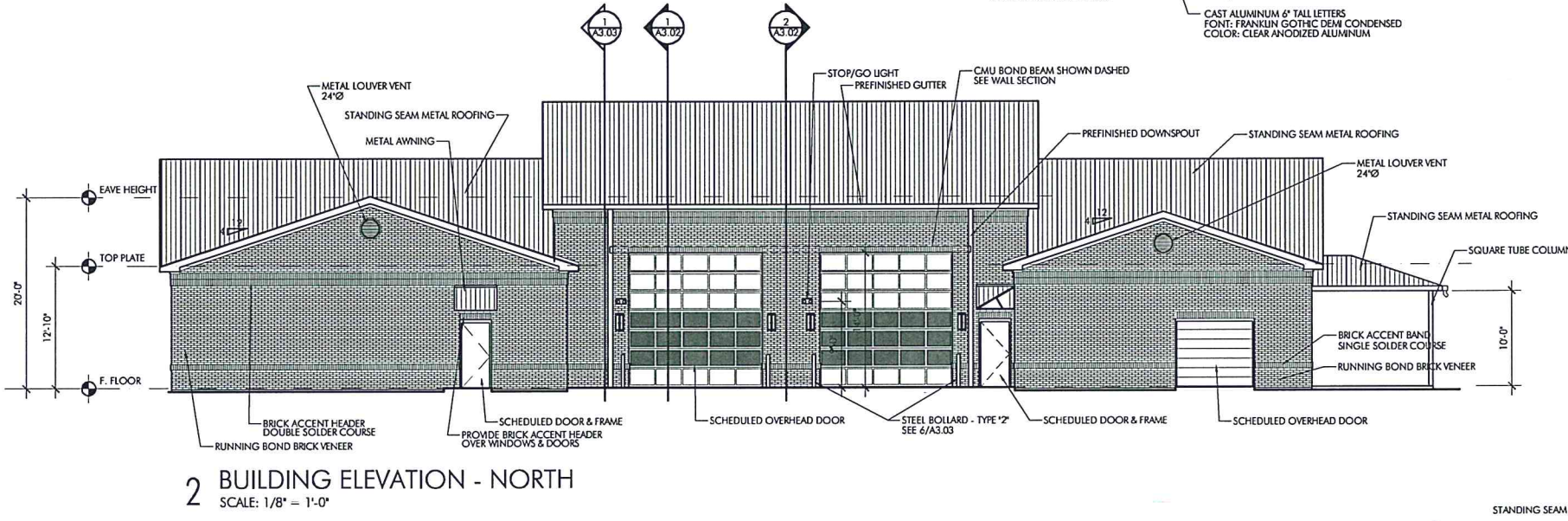
METER AND BACKFLOW PREVENTER SHOWN OUTSIDE OF PROPERTY LINE IS FOR GRAPHIC PURPOSES ONLY - ALL PIPING AND COMPONENTS TO BE LOCATED WITHIN THE PROPERTY LINES

BEGIN IRRIGATION SYSTEM AT IRRIGATION METER PROVIDED BY MECHANICAL CONTRACTOR SEE CIVIL SHEETS FOR CONTINUATION

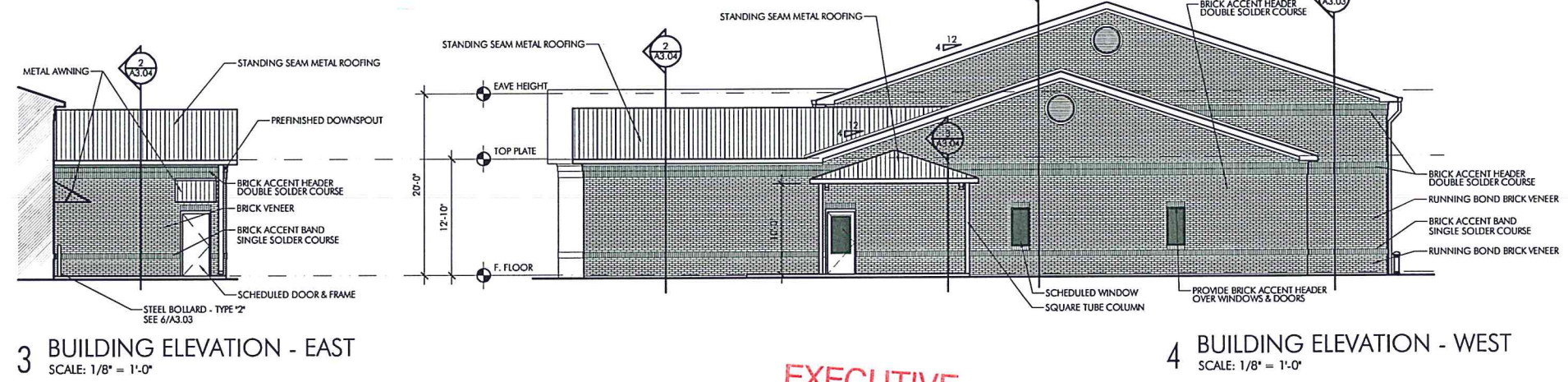
CONCEAL BACKFLOW PREVENTER IN SHRUBS - COORDINATE LOCATION WITH LANDSCAPE CONTRACTOR



1 BUILDING ELEVATION - SOUTH
 SCALE: 1/8" = 1'-0"

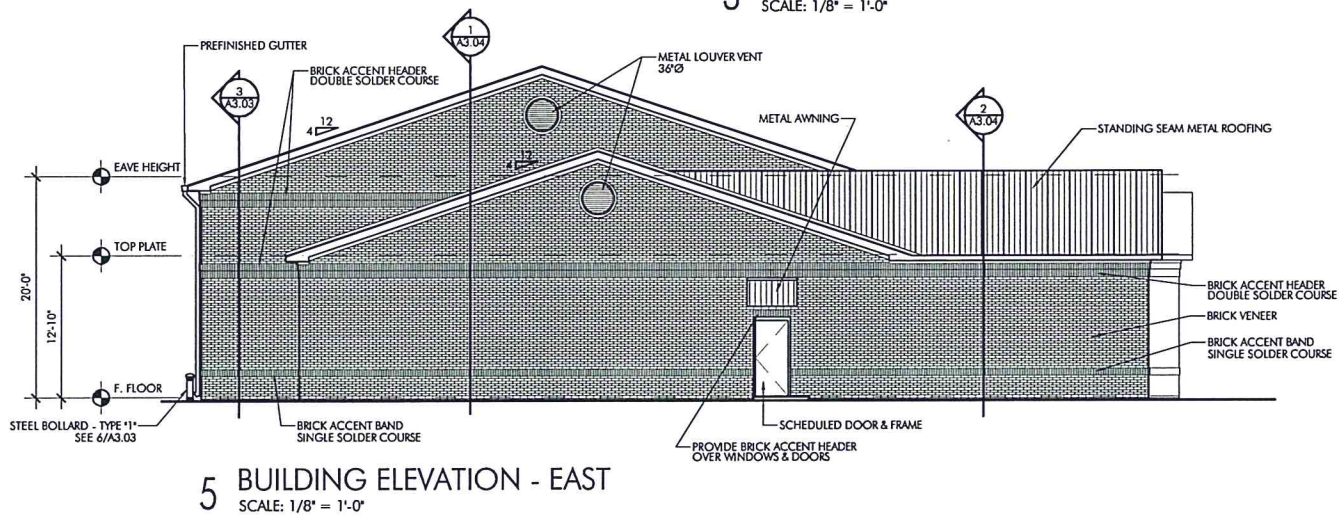


2 BUILDING ELEVATION - NORTH
 SCALE: 1/8" = 1'-0"



3 BUILDING ELEVATION - EAST
 SCALE: 1/8" = 1'-0"

4 BUILDING ELEVATION - WEST
 SCALE: 1/8" = 1'-0"



5 BUILDING ELEVATION - EAST
 SCALE: 1/8" = 1'-0"

**EXECUTIVE
 DIRECTOR
 APPROVAL**

4-26-24
 Date By *ACK*

A NEW FIRE STATION FOR
CITY OF SHREVEPORT
 SHREVEPORT FIRE DEPARTMENT - FIRE STATION #14
 3880 GREENWOOD ROAD
 SHREVEPORT, LOUISIANA 71109



MARCH 15, 2023

A3.01

SCALE: 1/8" = 1'-0"
 1" = 1'-0"
 2" = 2'-0"
 3" = 3'-0"
 4" = 4'-0"
 5" = 5'-0"
 6" = 6'-0"
 7" = 7'-0"
 8" = 8'-0"
 9" = 9'-0"
 10" = 10'-0"
 11" = 11'-0"
 12" = 12'-0"