

**BARRON RD BAPTIST CHURCH
UNIFIED DEVELOPMENT CODE SHREVEPORT LA.**

LOT TYPE: REVERSE CORNER LOT.

ZONING: R-A SPECIAL EXCEPTION NEW CHURCH FACILITY, PROPERTY AROUND = R-A. MATRIX 'PLACE OF WORSHIP'
R-A = 'P' (PERMITTED)

LOT SETBACK: FRONT = 30'-0", REVERSE CORNER = 30'-0", INTERIOR SIDE = 15'-0" REAR = 20'-0". MAX BLDG. HEIGHT = 35'-0".

OFF STREET PARKING: PLACE OF WORSHIP, (243 MAX. OCCUPANTS) 243/5 = 49 SPACES REQUIRED + 3 BICYCLE, 80 PARKING SPACES SHOWN INCLUDING 4 H/C. NOTE: THERE IS NO BICYCLE ACCESS IN THIS RURAL AREA.

PARKING LOT DIMENSIONS: 90 DEGREES, STALL = 9'-0"x18'-0", AISLE = 24'-0" TWO-WAY TRAFFIC, 12'-0" ONE-WAY TRAFFIC

TREE CREDIT: (1) 36" DIA PINE TREES @ 1:8 CREDIT + (3) 12" DIA. FIR @ 1:5 = 28 TREE CREDIT. USE TREE CREDITS ON LOT INTERIOR SIDE BUFFER AND PARKING LOT LANDSCAPING TREE REQUIREMENT.

REQUIRED SHADE TREE: R-A = 4 SHADE TREES REQUIRED, (2) EXISTING OVER 12" DIA.

LANDSCAPE INTERIOR SIDE BUFFER: 10'-0" WIDE W/ (1) SHADE TREE FOR EVERY 30 FT OF YARD LENGTH, 6' HIGH WOOD FENCE, 18" HIGH SHRUB EVERY 36", + GRASS OR COVER USE TREE CREDIT.

LANDSCAPE ALONG STREET RIGHT-OF-WAY: 1'-0" WIDTH LANDSCAPING x CONTINUOUS, ONE SHADE TREE OR 3 ORNAMENTAL TREES PER 500 SQ. FT. OF LANDSCAPING. 10 ORNAMENTAL TREES SHOWN ALONG R-O-W.

PARKING LOT EDGE PLANTING: 10 SHRUBS PER 500 SQ. FT. OF PLANTING AREA. 33 SHRUBS SHOWN ALONG R-O-W.

INTERIOR PARKING LOT LANDSCAPING: LANDSCAPING OF 10 % OF TOTAL PARKING AREA = 2685 SQ. FT. - PROVIDED 2810 SQ. FT. (4) ISLANDS REQUIRED - (6) ISLANDS SHOWN, USE 2 TREE CREDITS, 2 ORNAMENTAL TREES SHOWN

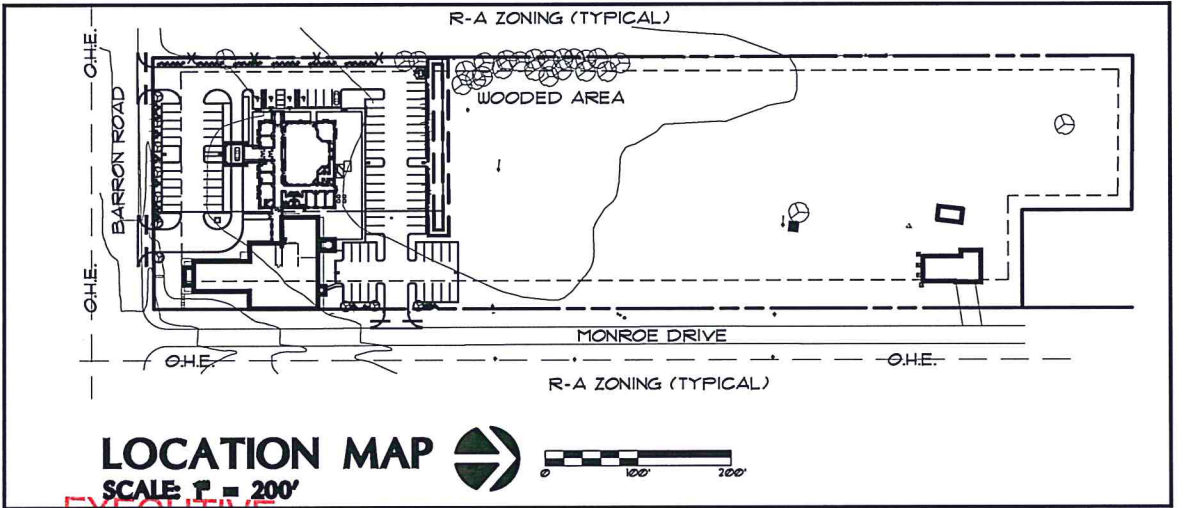
FIRE TRUCK ACCESS PROVIDED. NO FIRE HYDRANTS DUE TO WATER WELL SYSTEM.

PLANT SCHEDULE:

ORNAMENTAL TREES:
(3) AMERICAN SNOWBELL, (1) EASTERN REDBUD.
(23) TREE CREDITS

SHRUBS:
(21) DWARF NANDINA, (12) INDIAN HAWTHORN, (34) JUNIPER, (30) MOCK ORANGE, (31) SWEET SHRUB

PARKING COUNT:
(49) SPACES REQUIRED, (80) SHOWN



PAVING NOTE: ALL SIDEWALK PAVING TO BE CONCRETE. ALL VEHICULAR PAVING TO BE CONCRETE OR ASPHALT.

PARTIAL LANDSCAPE AND ARCHITECTURAL SITE PLAN
SCALE: 1" = 40'



EXECUTIVE DIRECTOR APPROVAL

MPC EXECUTIVE DIRECTOR SIGNATURE
BARRON ROAD BAPTIST CHURCH
LEGAL: 6.243 ACS. M/L-LOT 1, BARRON ROAD BAPTIST CHURCH UNIT 2, 161427-12-1

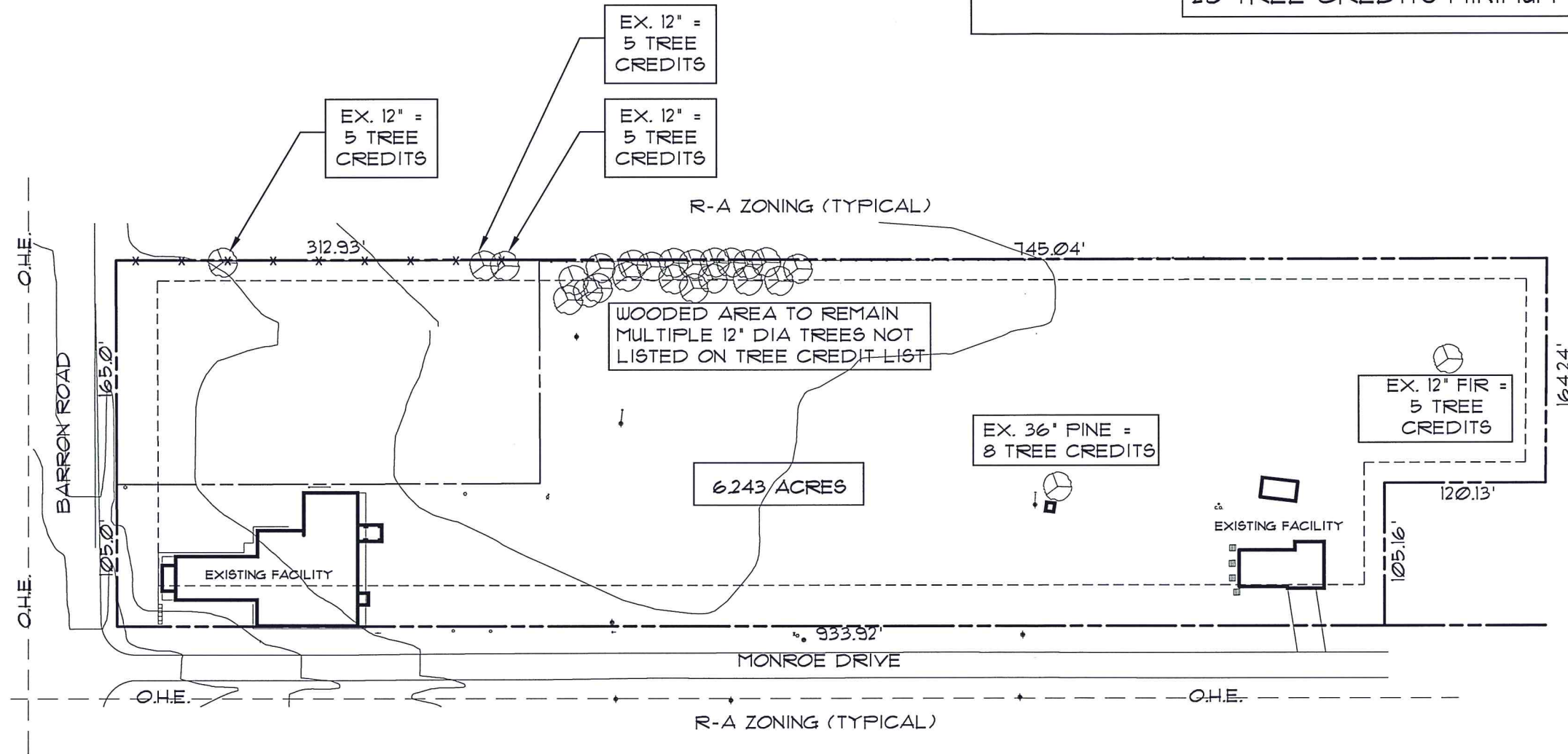
28 MARCH 2018

4/13/18 Date By *Muy.*

TREE CREDIT: (1) 36" DIA PINE TREES @ 1:8 CREDIT + (3)
12" DIA. TREES @ 1:5 = 23 TREE CREDIT.

USE TREE CREDITS ON LOT INTERIOR SIDE BUFFER
AND PARKING LOT LANDSCAPING TREE REQUIREMENT.

28 TREE CREDITS MINIMUM AVAILABLE.

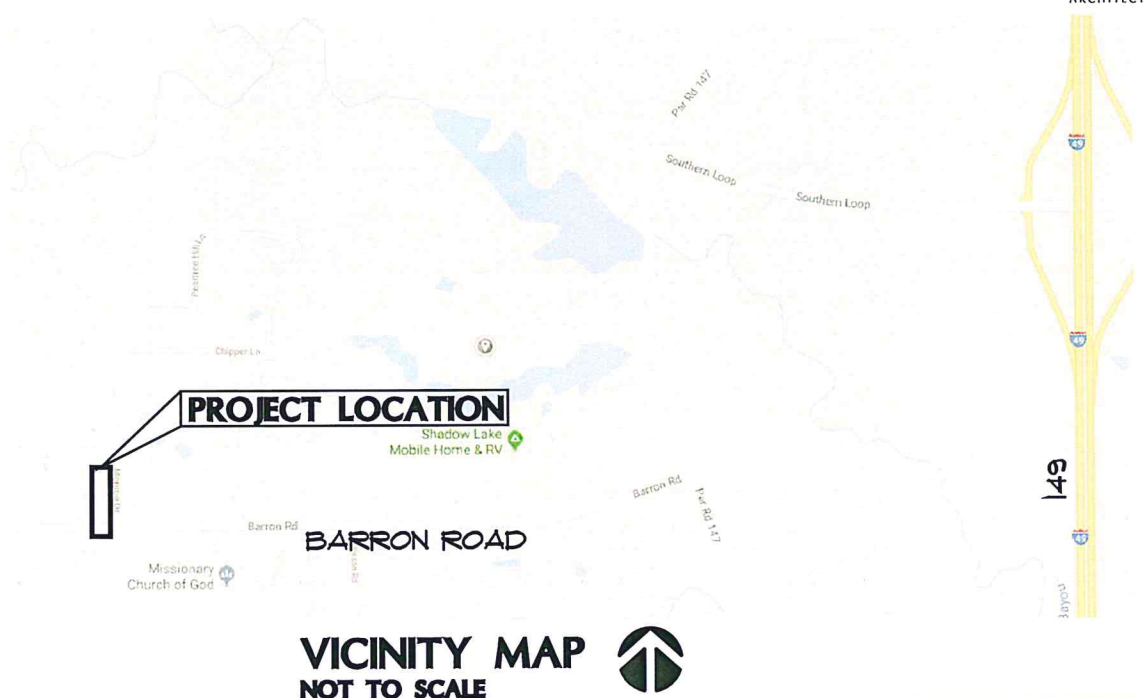
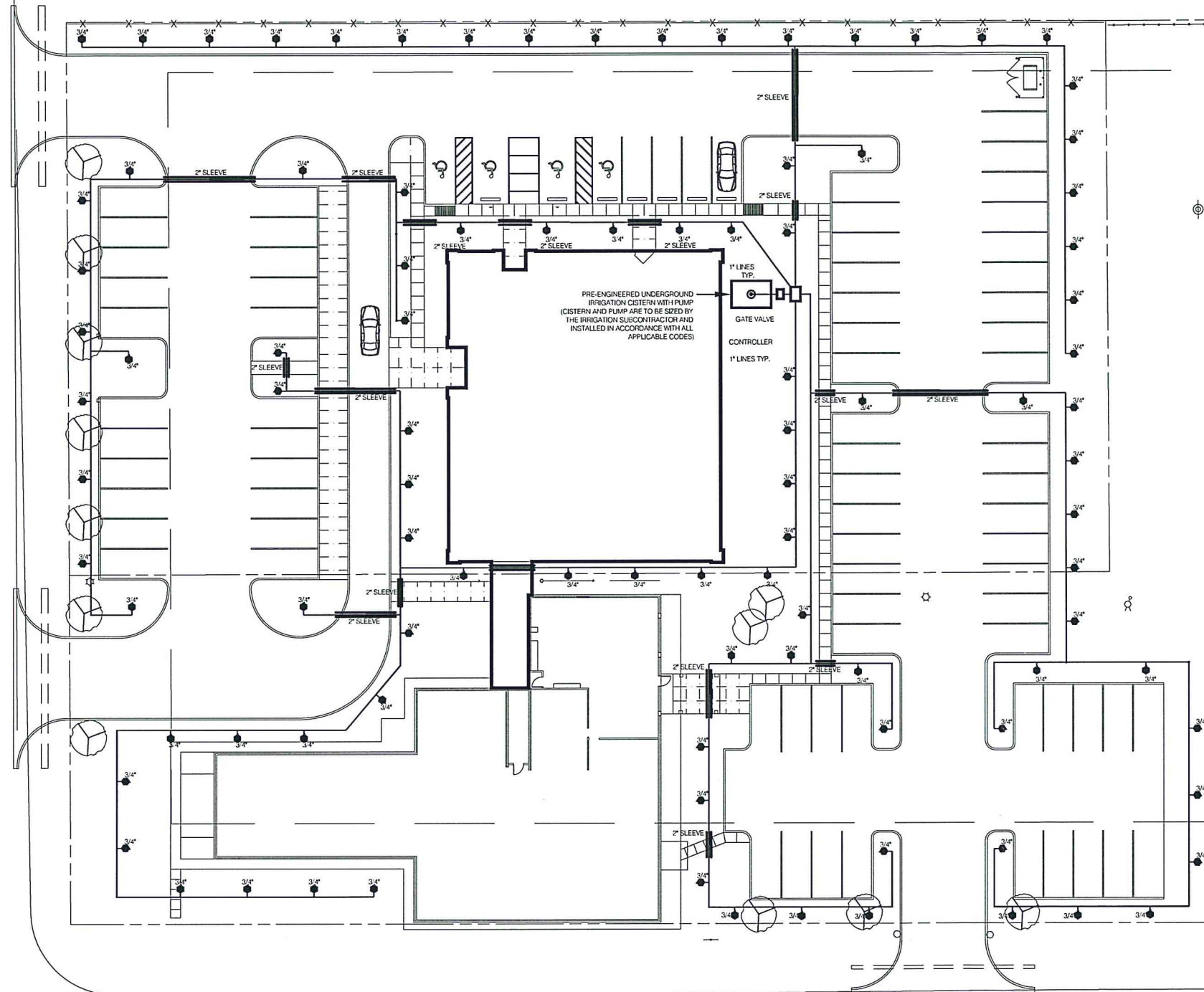


TREE PRESERVATION PLAN 
SCALE 1" = 100'

EXECUTIVE
DIRECTOR
APPROVAL

4/13/18 Date By *myj.*

28 MARCH 2018
MPC EXECUTIVE DIRECTOR SIGNATURE
BARRON ROAD BAPTIST CHURCH
LEGAL: 6.243 ACS. M/L-LOT 1, BARRON ROAD BAPTIST CHURCH UNIT 2, 161427-12-1



LEGEND:

☛ RAIN BIRD 1800 POP UP SPRINKLER HEAD ASSEMBLY

IRRIGATION SITE PLAN
SCALE 1" = 40'



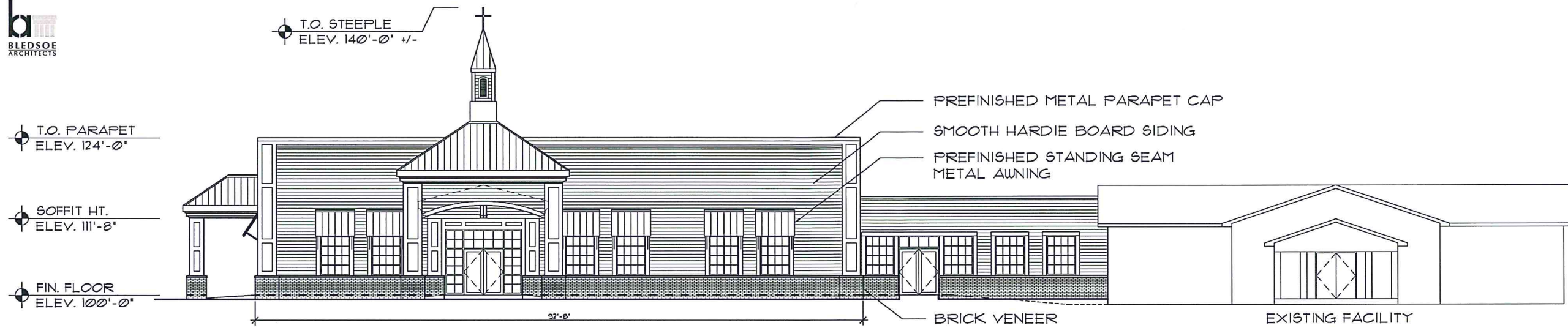
**EXECUTIVE
DIRECTOR
APPROVAL**

Date 4/13/18 By [Signature]

LOCATION MAP
NOT TO SCALE

MPC EXECUTIVE DIRECTOR SIGNATURE
BARRON ROAD BAPTIST CHURCH
LEGAL: 6.243 ACS. M/L-LOT 1, BARRON ROAD BAPTIST CHURCH UNIT 2, 161427-12-1

28 MARCH 2018
1713



SOUTH ELEVATION
SCALE: 1/8" = 1'-0"



WEST ELEVATION
SCALE: 1/8" = 1'-0"



EAST ELEVATION
SCALE: 1/8" = 1'-0"

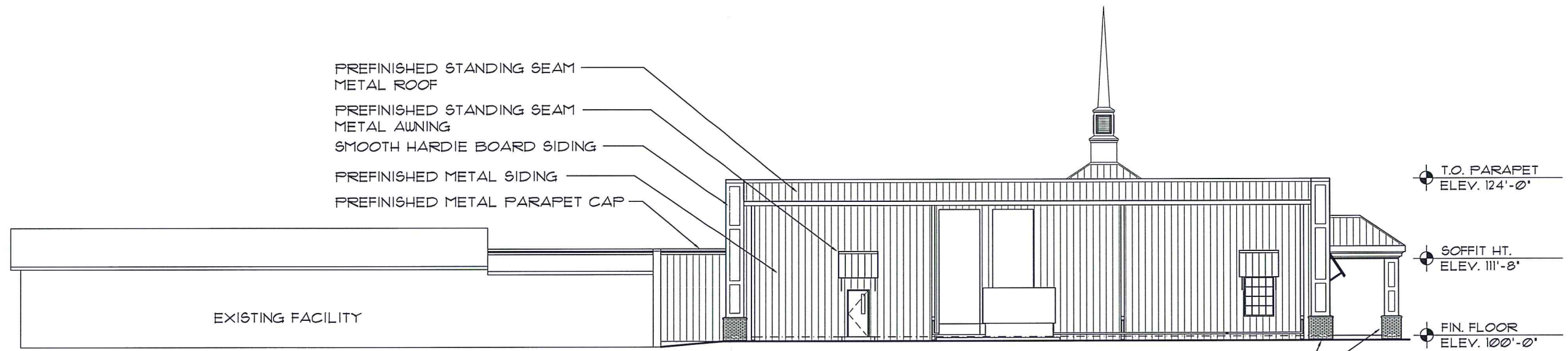
**EXECUTIVE
DIRECTOR
APPROVAL**

4/13/18 MWJ
Date By

28 MARCH 2018

1713

MPC EXECUTIVE DIRECTOR SIGNATURE
BARRON ROAD BAPTIST CHURCH
LEGAL: 6.243 ACS. M/L-LOT 1, BARRON ROAD BAPTIST CHURCH UNIT 2, 161427-12-1



PREFINISHED STANDING SEAM METAL ROOF
 PREFINISHED STANDING SEAM METAL AWNING
 SMOOTH HARDIE BOARD SIDING
 PREFINISHED METAL SIDING
 PREFINISHED METAL PARAPET CAP

EXISTING FACILITY

T.O. PARAPET
ELEV. 124'-0"
 SOFFIT HT.
ELEV. 111'-8"
 FIN. FLOOR
ELEV. 100'-0"

BRICK VENEER

NORTH ELEVATION
 SCALE: 1/16" = 1'-0"

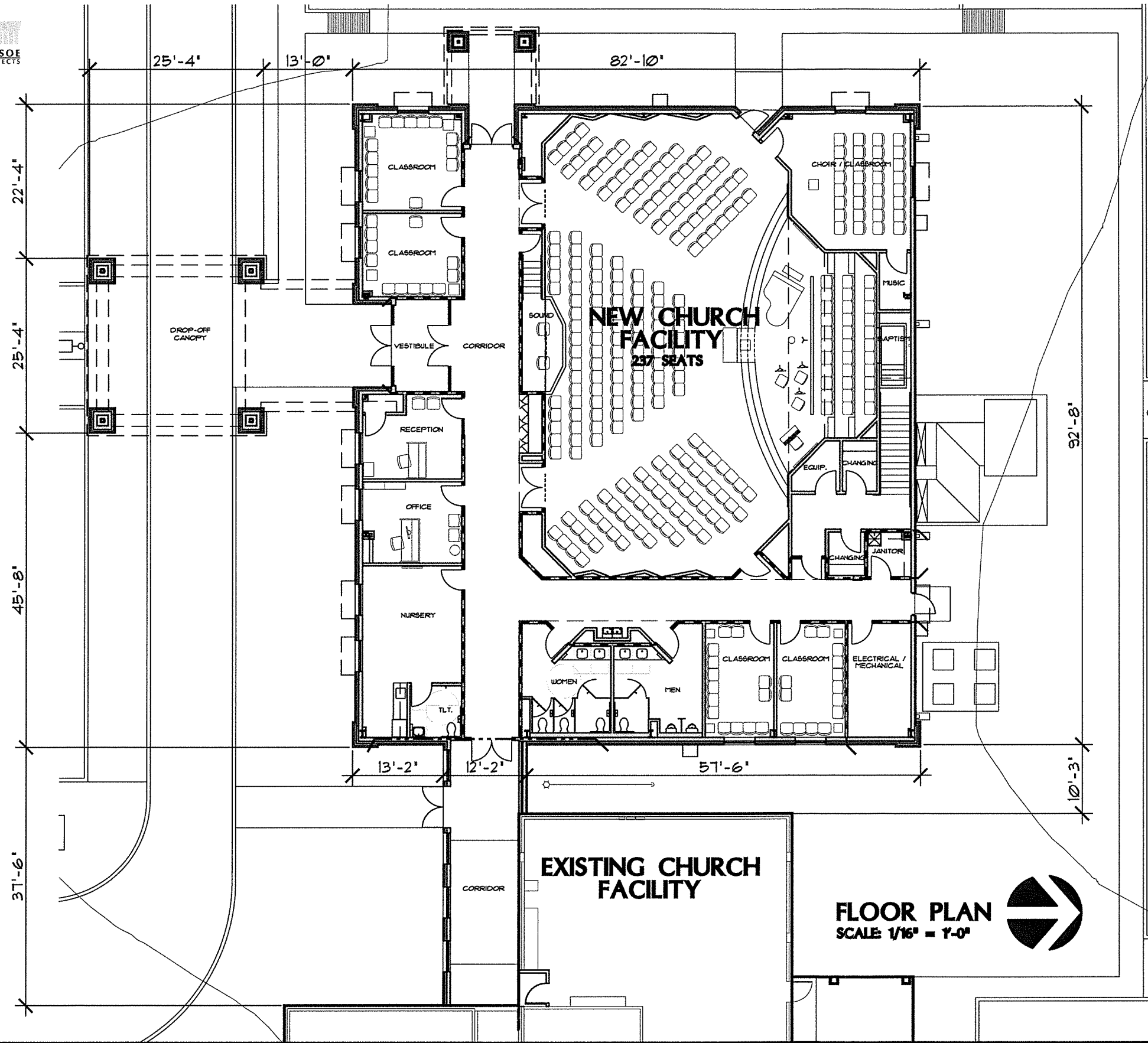
**EXECUTIVE
 DIRECTOR
 APPROVAL**

4/13/18 *MJ*
 Date By

28 MARCH 2018

MPC EXECUTIVE DIRECTOR SIGNATURE
 BARRON ROAD BAPTIST CHURCH
 LEGAL: 6.243 ACS, M/L-LOT 1, BARRON ROAD BAPTIST CHURCH UNIT 2, 161427-12-1

1713



MPC EXECUTIVE DIRECTOR SIGNATURE _____
 BARRON ROAD BAPTIST CHURCH
 LEGAL: 6.243 ACS. M/L-LOT 1, BARRON ROAD BAPTIST CHURCH UNIT 2, 161427-12-1

28 MARCH 2018
 1713