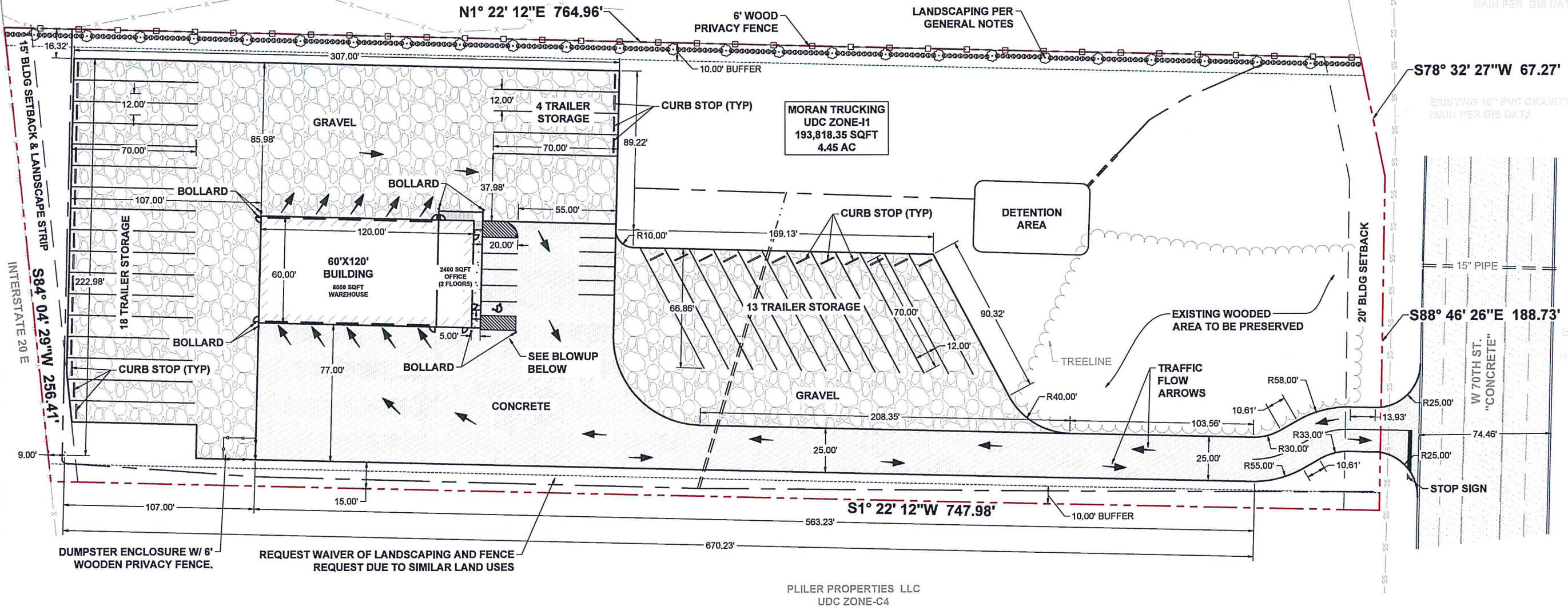


KINGDOM PERSPECTIVES SHREVEPORT LLC
UDC ZONE-C4



DUMPSTER ENCLOSURE W/ 6' WOODEN PRIVACY FENCE.
REQUEST WAIVER OF LANDSCAPING AND FENCE REQUEST DUE TO SIMILAR LAND USES

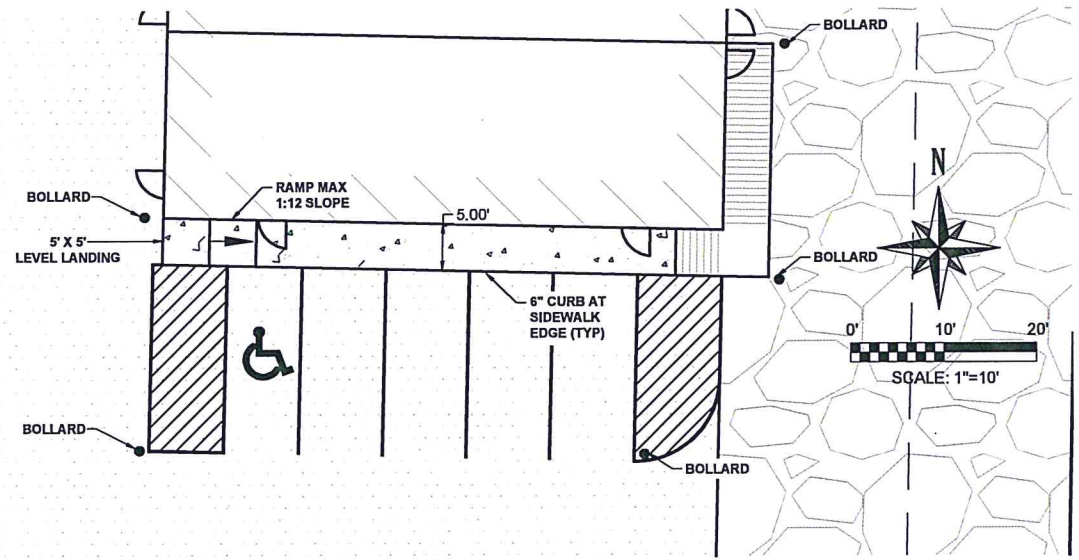
PLILER PROPERTIES LLC
UDC ZONE-C4

- GENERAL NOTES:**
- 1) ANY DISCREPANCIES NOTED IN THE PLANS SHOULD BE BROUGHT TO THE ATTENTION OF THE ENGINEER IMMEDIATELY FOR RESOLUTION.
 - 2) ONE SHADE TREE OR 3 ORNAMENTAL TREES MUST BE PLANTED EVERY 30 LINEAR FEET OF THE BUFFER YARD
 - 3) ONE SHRUB MUST BE PLANTED EVERY 3 LINEAR FEET OF THE BUFFER YARD

EXECUTIVE DIRECTOR APPROVAL

4-1-24
Date By *[Signature]*

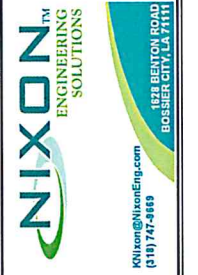
LEGEND	
BOUNDARY	----
CHAINLINK FENCE	-----
OVERHEAD POWER	—P—P—
GRAVITY SEWER	—SS—SS—
WATERLINE	—W—W—
TREELINE	~~~~~
CONCRETE	
GRAVEL	
POWER POLE	PP
GAS METER	GM
SIGN	SN
GUY ANCHOR	GUY
CATCH BASIN	CB



SHREVEPORT TRAILER YARD
MORAN TRUCKING
W 70TH STREET, SHREVEPORT
CADDO PARISH, LOUISIANA

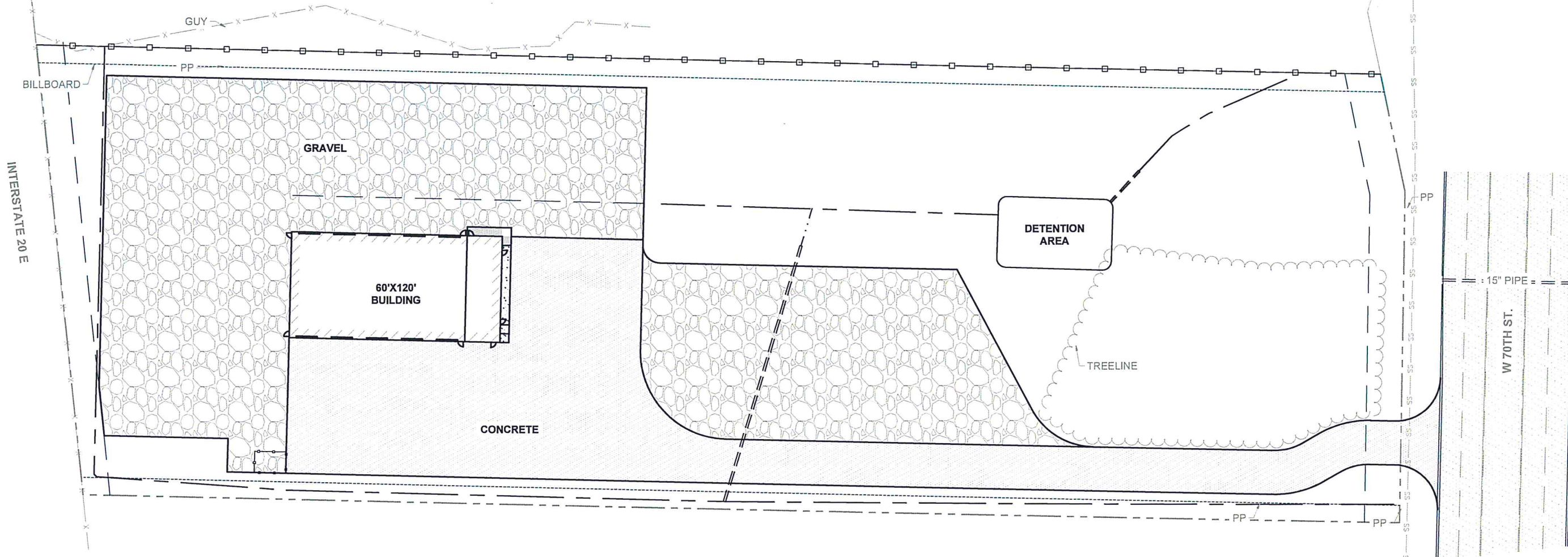
PRELIMINARY
THIS DOCUMENT IS NOT TO BE USED FOR CONSTRUCTION, BIDDING, RECORDATION, CONTRACTS, SALES, OR AS THE BASIS FOR ISSUANCE OF A PERMIT.
KURT M. NIXON
LA REG. NO. 31339-CE

SITE PLAN



NO.	DATE	REVISION

Drawn By: KBN
Project Number: 011823.12
Scale: 1"=30'
Date: 01/23/2024
Sheet: 2.0

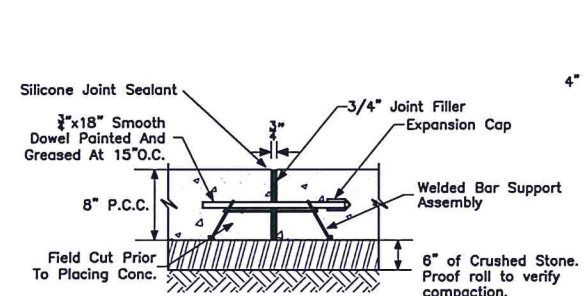


SHREVEPORT TRAILER YARD
 MORAN TRUCKING
 W 70TH STREET, SHREVEPORT
 CADDO PARISH, LOUISIANA

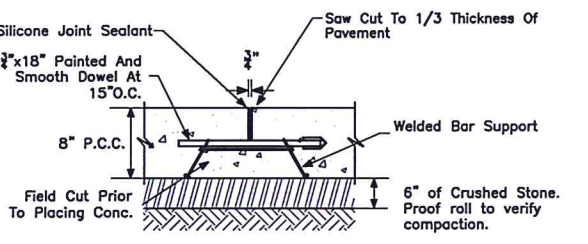
PRELIMINARY
 THIS DOCUMENT IS NOT TO BE USED FOR CONSTRUCTION, BIDDING, RECORDATION, COMPLIANCE SALES, OR AS THE BASIS FOR ISSUANCE OF A PERMIT.
KURT M. NIXON
 LA REG. NO. 31339-CE

PAVING PLAN

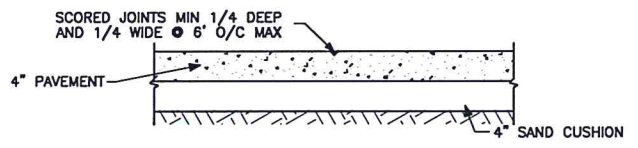
NIXON ENGINEERING SOLUTIONS
 1228 BEATON ROAD
 BOSSIER CITY, LA 71111
 KNixon@NixonEng.com
 (504) 747-8889



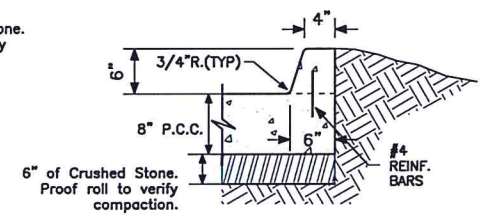
1 EXPANSION JOINT DETAIL
 SCALE: NOT TO SCALE



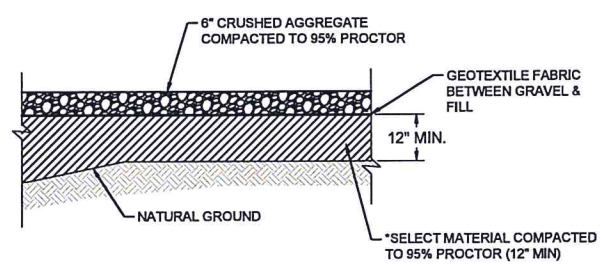
2 DUMMY JOINT DETAIL
 NOT TO SCALE



4 SIDEWALK PAVING DETAIL



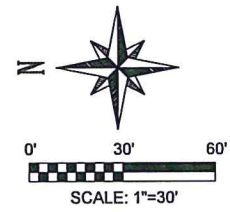
5 TYPICAL BARRIER CURB
 SCALE: NOT TO SCALE



6 TRAILER STORAGE TYPICAL SECTION
 SCALE: NOT TO SCALE

- NOTES:**
1. All concrete paving to be 4000 PSI @ 28 days
 2. All joints in paving to be no more than 12.5' apart in each direction, unless otherwise shown.
 3. All joints in sidewalk to be no more than 6' apart in each direction.
 3. All paving to be 8" thick PCC unless shown otherwise
 4. All vegetation under proposed paving to be removed.
 5. All natural ground under proposed paving and gravel sections to be compacted to 95% Standard Proctor

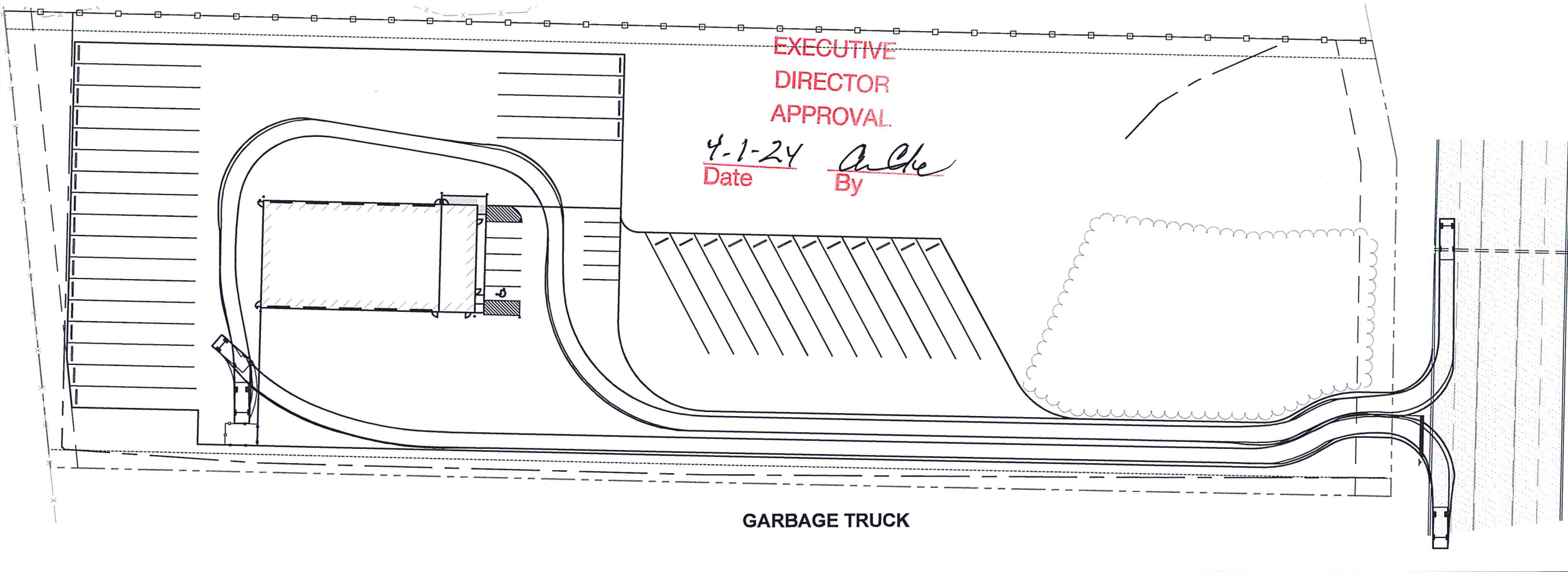
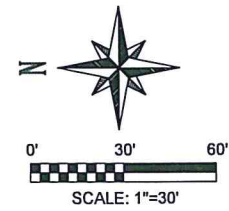
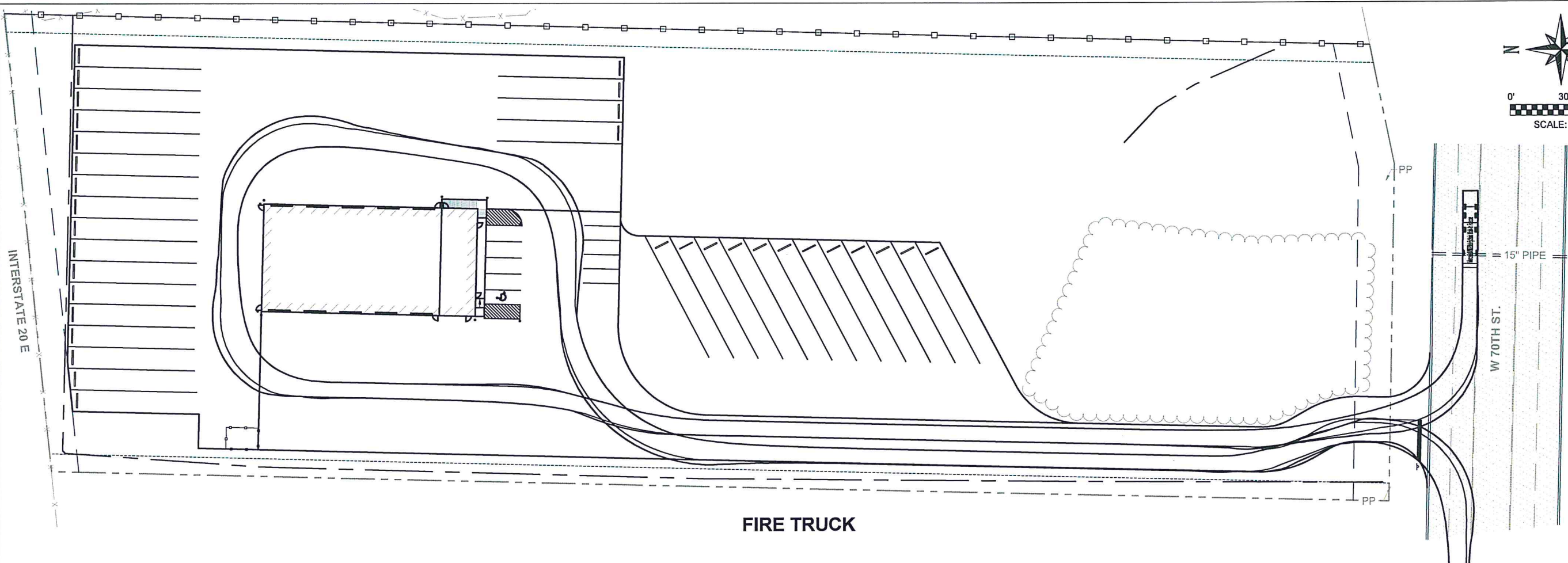
PLILER PROPERTIES LLC
EXECUTIVE DIRECTOR APPROVAL
 Date 4-1-24 By [Signature]



NO.	DATE	REVISION

Drawn By: KBN
 Date: 01/18/23/12
 Scale: 1"=30'
 Date: 01/23/2024
3.0

*EXISTING SITE SOILS MAY QUALIFY AS SELECT MATERIAL CONTRACTOR TO VERIFY.



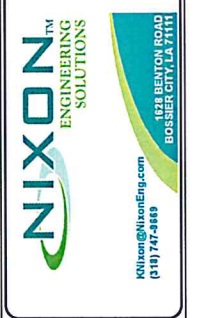
EXECUTIVE
DIRECTOR
APPROVAL

4-1-24 Archie
Date By

**SHREVEPORT TRAILER
YARD**
MORAN TRUCKING
W 70TH STREET, SHREVEPORT
CADD O PARISH, LOUISIANA

PRELIMINARY
THIS DOCUMENT IS NOT TO
BE USED FOR CONSTRUCTION,
BIDDING, REDDICATION,
CONTRACTS, SALES, OR AS
THE BASIS FOR ISSUANCE OF
A PERMIT.
KURT M. NIXON
LA REG. NO. 31339-CE

AUTOTURN



NO.	DATE	REVISION

Drawn by: KBN	Project Number: 0116.23.12
Scale: 1"=30'	Date: 01/23/2024
6.0	

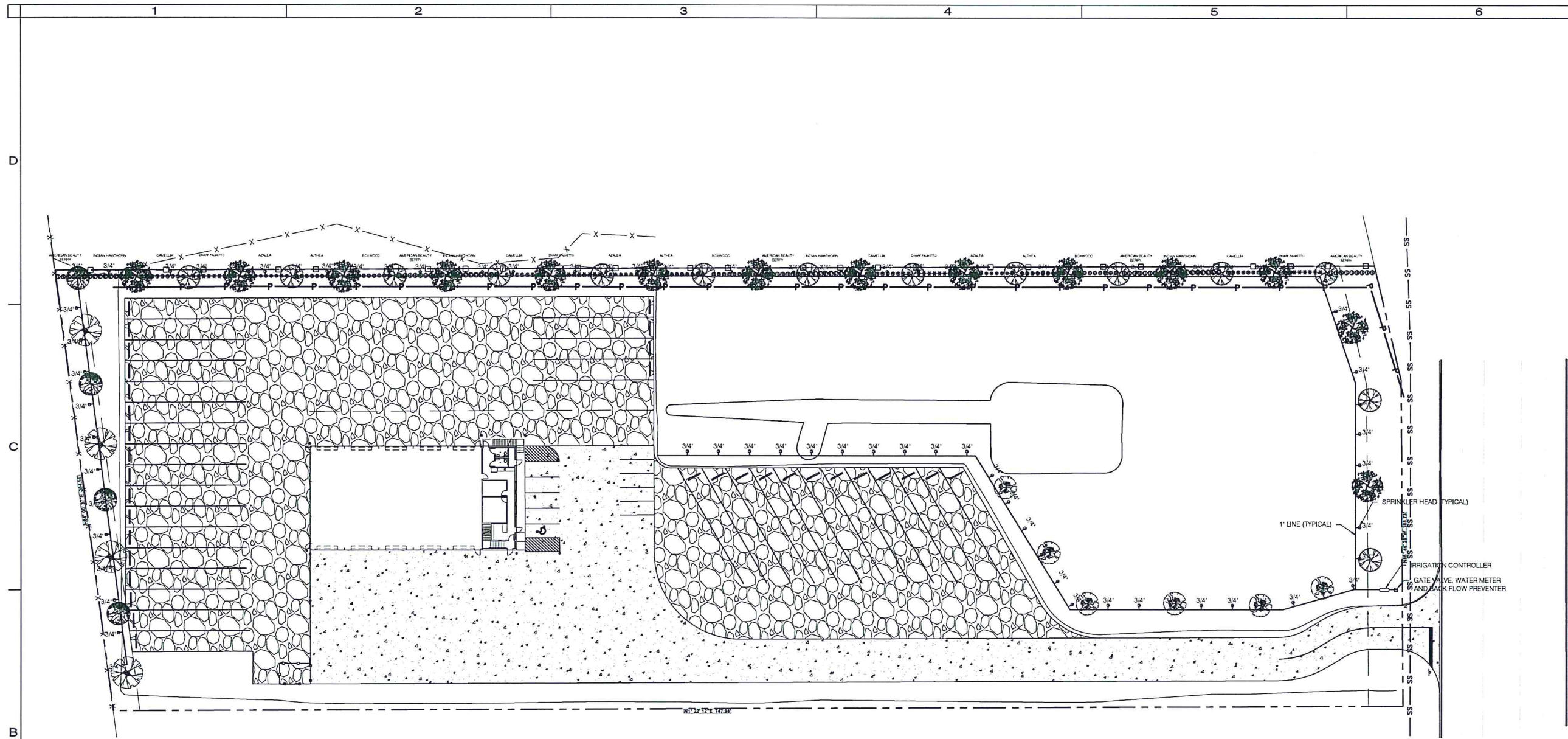


COPYRIGHT
THESE DOCUMENTS ARE PROTECTED BY UNITED STATES
COPYRIGHT LAW. THEY HAVE BEEN PREPARED SPECIFICALLY
FOR THE PROJECT IDENTIFIED AND ARE NOT SUITABLE FOR
USE ON ANY OTHER PROJECT OR AT ANY OTHER LOCATION
WITHOUT THE EXPRESS WRITTEN APPROVAL AND
PARTICIPATION OF ABRAMS ARCHITECTURE AND DESIGN.
REPRODUCTION OF THESE DOCUMENTS MUST BE AUTHORIZED
BY THE ARCHITECT. ALL RIGHTS ARE RESERVED TO ABRAMS
ARCHITECTURE AND DESIGN.

VEGETATION
LAYOUT

REVISIONS NO. DATE	PROJECT NO. AA 2402
.....	SHEET A0.01

DATE 03.07.24



VEGETATION LEGEND

- GRAVEL PARKING
- NEW CONCRETE PAVING
- NEW BERMUDA GRASS GROUND COVER SOD
- 41 TOTAL - AMERICAN BEAUTY BERRY
3 gallon size at planting
- 40 TOTAL - INDIAN HAWTHORN
3 gallon size at planting
- 27 TOTAL - AZALEA
3 gallon size at planting
- 27 TOTAL - ALTHEA
3 gallon size at planting
- 27 TOTAL - BOXWOOD, COMMON
3 gallon size at planting
- 36 TOTAL - CAMELLIA
3 gallon size at planting
- 36 TOTAL - DWARF PALMETTO
3 gallon size at planting
- 4 TOTAL - HACKBERRY
3 inch caliper 12' above soil at planting
- 6 TOTAL - POND CYPRESS
3 inch caliper 12' above soil at planting
- 14 TOTAL - RIVER BIRCH
3 inch caliper 12' above soil at planting
- 4 TOTAL - Sweetbay Magnolia
3 inch caliper 12' above soil at planting
- 14 TOTAL - OAK, Swamp Chestnut
3 inch caliper 12' above soil at planting

LANDSCAPING GENERAL NOTES:

- PROVIDE MULCH BEDS AT TREES AND SHRUBS
- EXACT PLANT SPECIES, SPACING AND LOCATION TO BE SUBMITTED BY LANDSCAPING SUBCONTRACTOR DURING CONSTRUCTION SUBMITTALS PROCESS
- PROVIDE IRRIGATION FOR ALL LANDSCAPING SHOWN IN THIS CONTRACT

A1 VEGETATION LAYOUT
SCALE: 1"=30'-0"

EXECUTIVE
DIRECTOR
APPROVAL

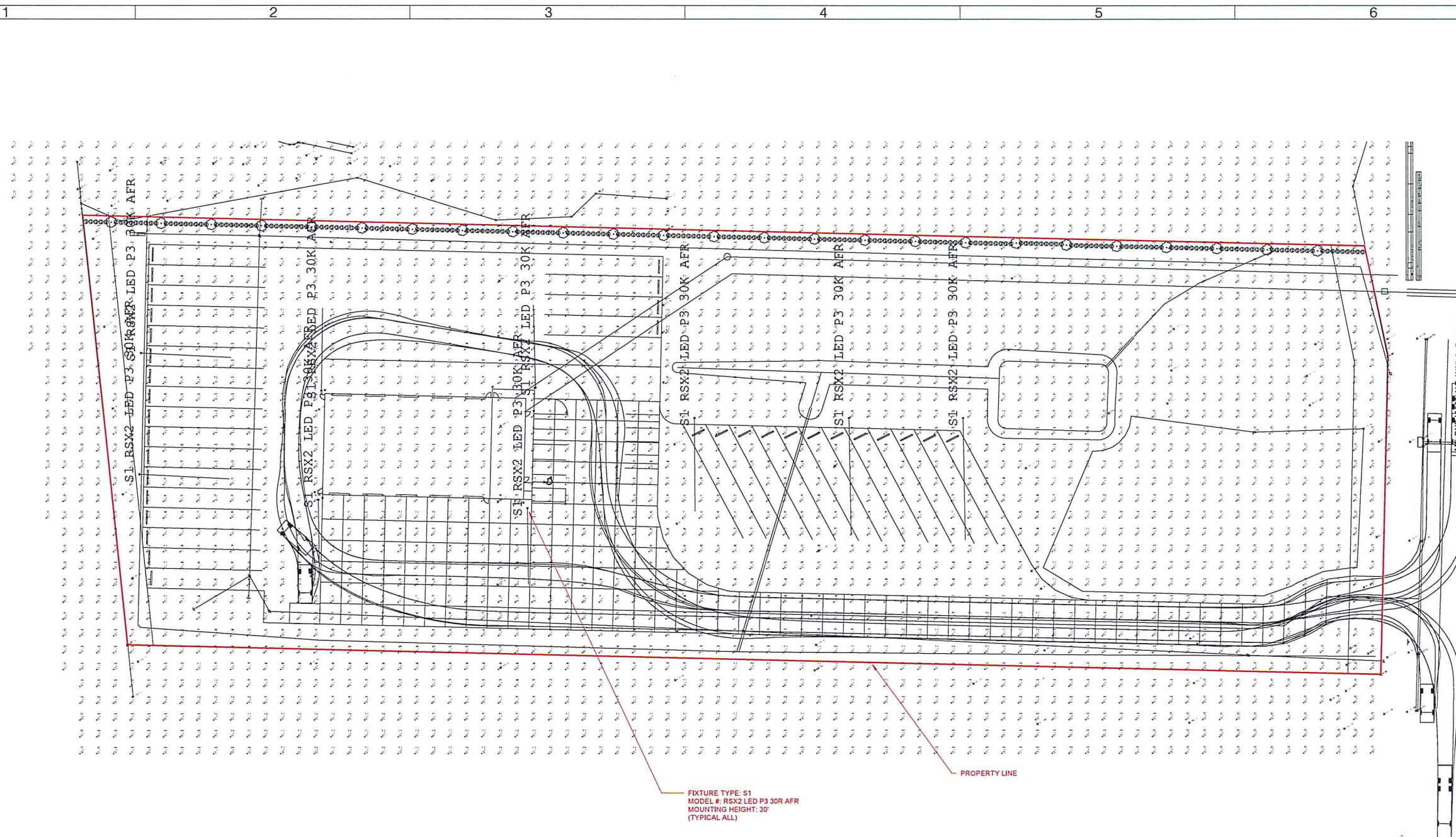
4-1-24
Date By *CC*

MORAN TRUCK
MAINTENANCE BLDG

COPYRIGHT
THESE DOCUMENTS ARE PROTECTED BY
UNITED STATES COPYRIGHT LAW. THEY HAVE
BEEN PREPARED SPECIFICALLY FOR THE
PROJECT IDENTIFIED AND ARE NOT SUITABLE
FOR USE ON ANY OTHER PROJECT OR AT ANY
OTHER LOCATION WITHOUT THE EXPRESS
WRITTEN APPROVAL AND PARTICIPATION OF
ABRAMS ARCHITECTURE AND DESIGN, LLC.
REPRODUCTION OF THESE DOCUMENTS MUST
BE AUTHORIZED BY THE ARCHITECT. ALL
RIGHTS ARE RESERVED TO ABRAMS
ARCHITECTURE AND DESIGN, LLC.

SITE PLAN
PHOTOMETRIC
CALCULATIONS

REVISIONS	PROJECT NO.
NO. DATE	-
1	SHEET
	ME1.02



1 SITE PLAN - PHOTOMETRIC
CALCULATIONS
3/8" = 1'-0"

EXECUTIVE
DIRECTOR
APPROVAL

4-1-24
Date By *AA*





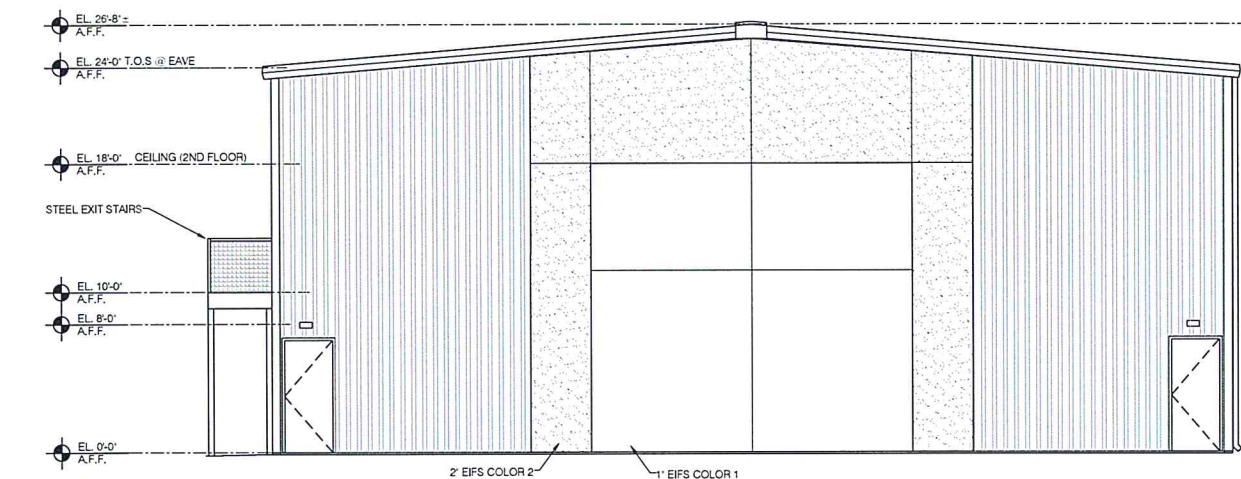
COPYRIGHT
THESE DOCUMENTS ARE PROTECTED BY UNITED STATES
COPYRIGHT LAW. THEY HAVE BEEN PREPARED SPECIFICALLY
FOR THE PROJECT IDENTIFIED AND ARE NOT SUITABLE FOR
USE ON ANY OTHER PROJECT OR AT ANY OTHER LOCATION
WITHOUT THE EXPRESS WRITTEN APPROVAL AND
PARTICIPATION OF ABRAMS ARCHITECTURE AND DESIGN.
REPRODUCTION OF THESE DOCUMENTS MUST BE AUTHORIZED
BY THE ARCHITECT. ALL RIGHTS ARE RESERVED TO ABRAMS
ARCHITECTURE AND DESIGN.

EXTERIOR
ELEVATIONS

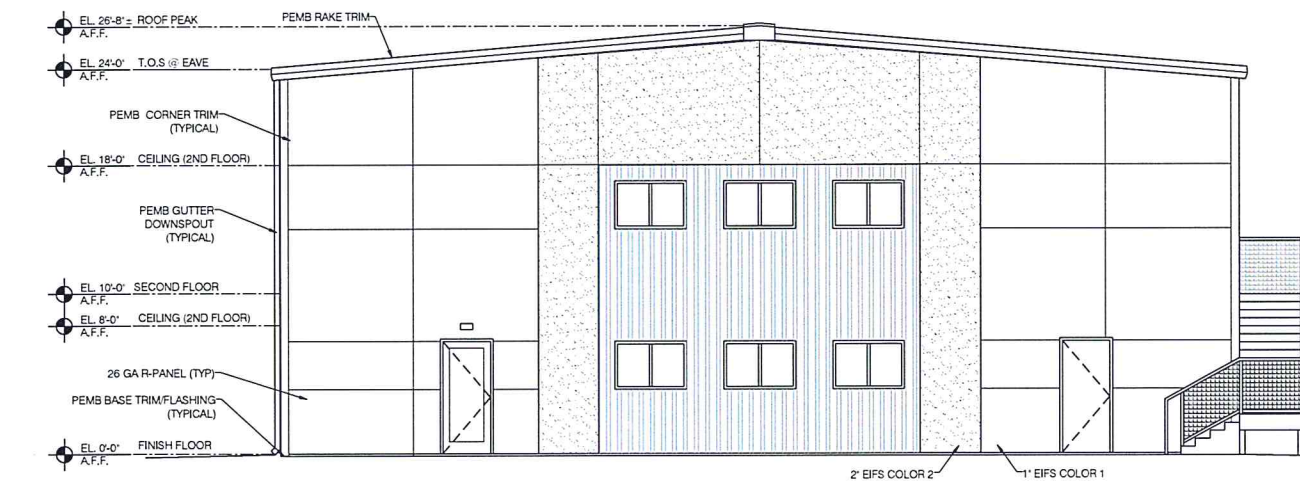
REVISIONS	PROJECT NO:
NO. DATE	AA 2402
* * * * *	SHEET
	A3.01

EXECUTIVE
DIRECTOR
APPROVAL.

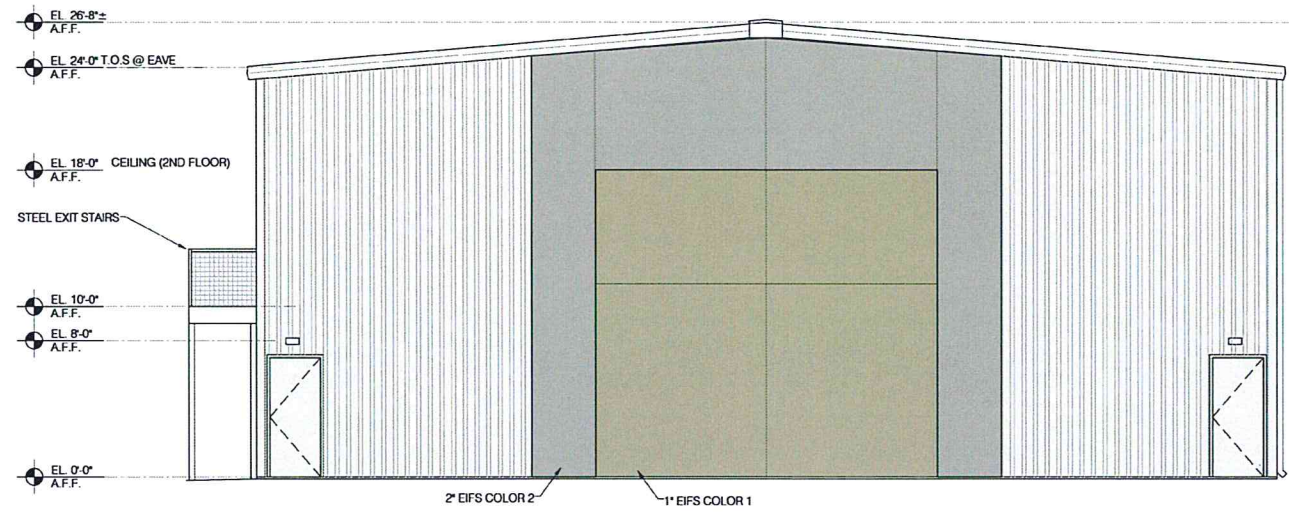
4-1-24 ac
Date By



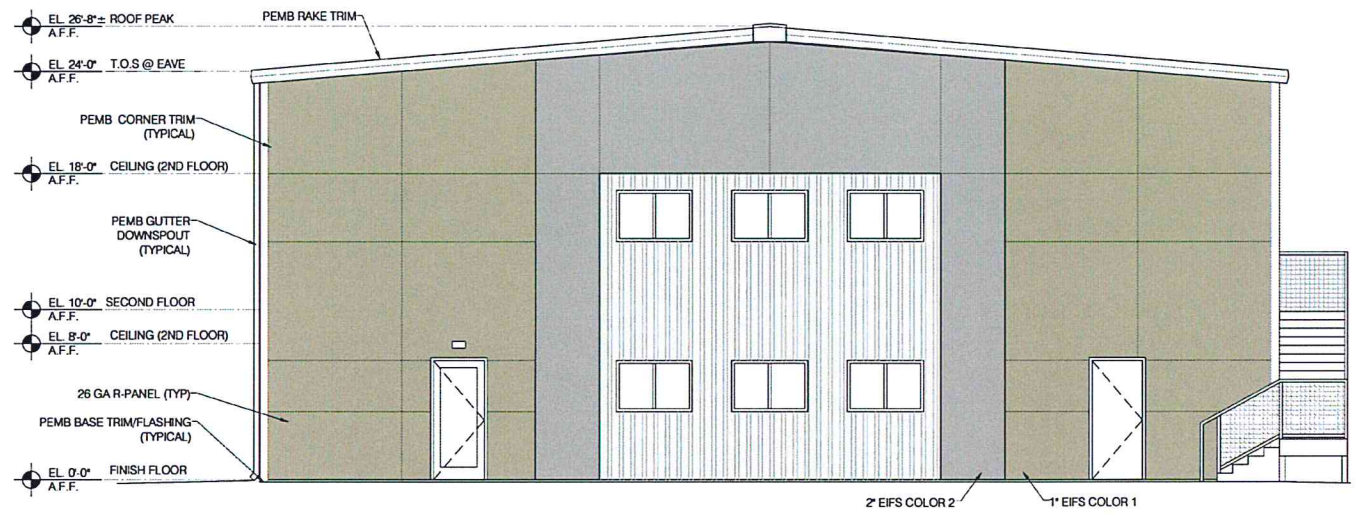
A2 EXTERIOR ELEVATION
SCALE: 3/16" = 1'-0"



A1 EXTERIOR ELEVATION
SCALE: 3/16" = 1'-0"



1 NORTH ELEVATION
SCALE: 3/16" = 1'-0"



2 SOUTH ELEVATION
SCALE: 3/16" = 1'-0"

**EXECUTIVE
DIRECTOR
APPROVAL**

4-1-24 *ACL*
Date By

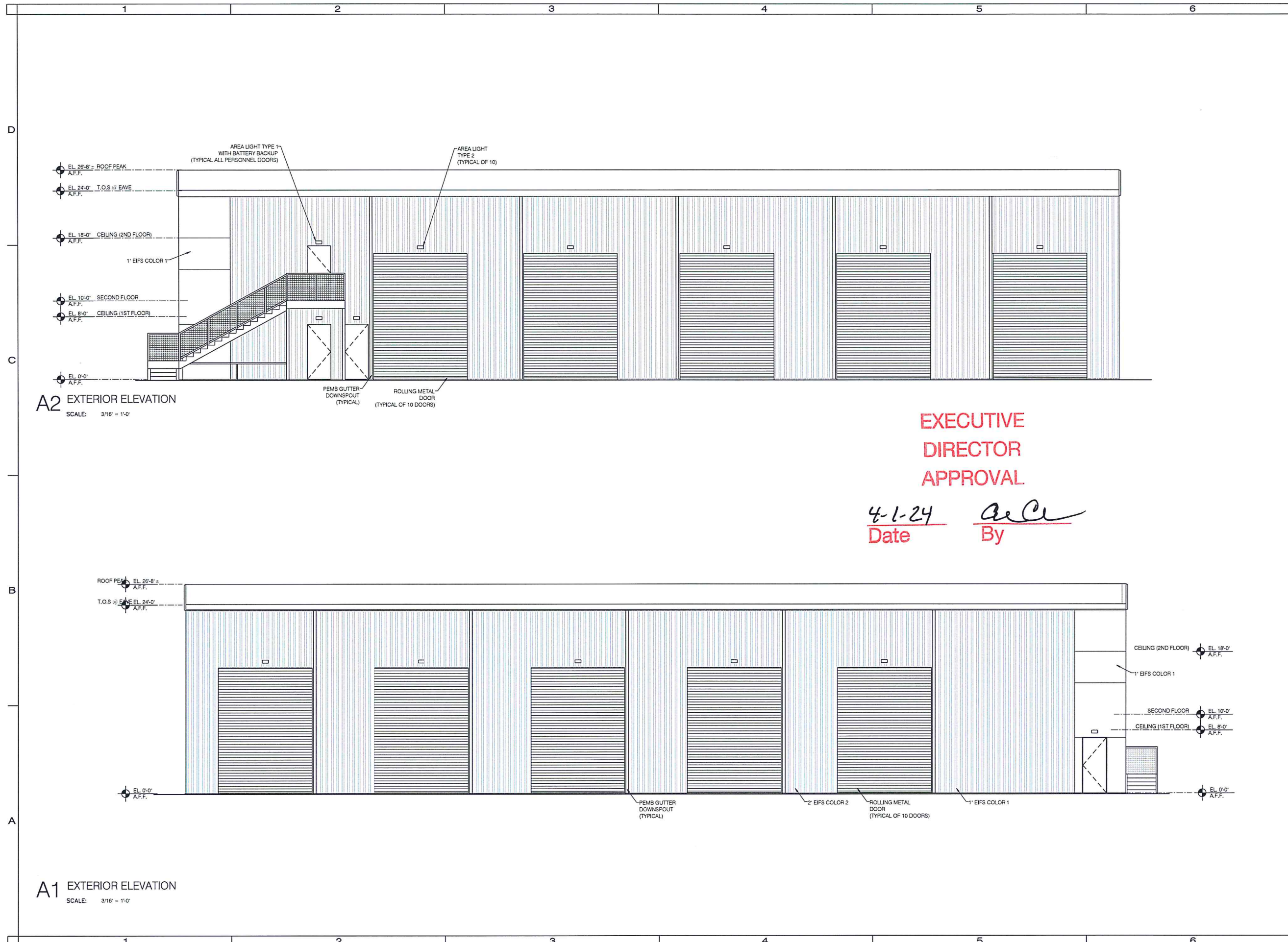


COPYRIGHT
THESE DOCUMENTS ARE PROTECTED BY UNITED STATES
COPYRIGHT LAW. THEY HAVE BEEN PREPARED SPECIFICALLY
FOR THE PROJECT IDENTIFIED AND ARE NOT SUITABLE FOR
USE ON ANY OTHER PROJECT OR AT ANY OTHER LOCATION
WITHOUT THE EXPRESS WRITTEN APPROVAL AND
PARTICIPATION OF ABRAMS ARCHITECTURE AND DESIGN.
REPRODUCTION OF THESE DOCUMENTS MUST BE AUTHORIZED
BY THE ARCHITECT. ALL RIGHTS ARE RESERVED TO ABRAMS
ARCHITECTURE AND DESIGN.

EXTERIOR ELEVATIONS

REVISIONS	PROJECT NO:
NO. DATE	AA 2402
• • • • •	SHEET
	A3.02

DATE 03.07.24



A2 EXTERIOR ELEVATION
SCALE: 3/16" = 1'-0"

**EXECUTIVE
DIRECTOR
APPROVAL**

4-1-24 *BeCe*
Date By

A1 EXTERIOR ELEVATION
SCALE: 3/16" = 1'-0"