

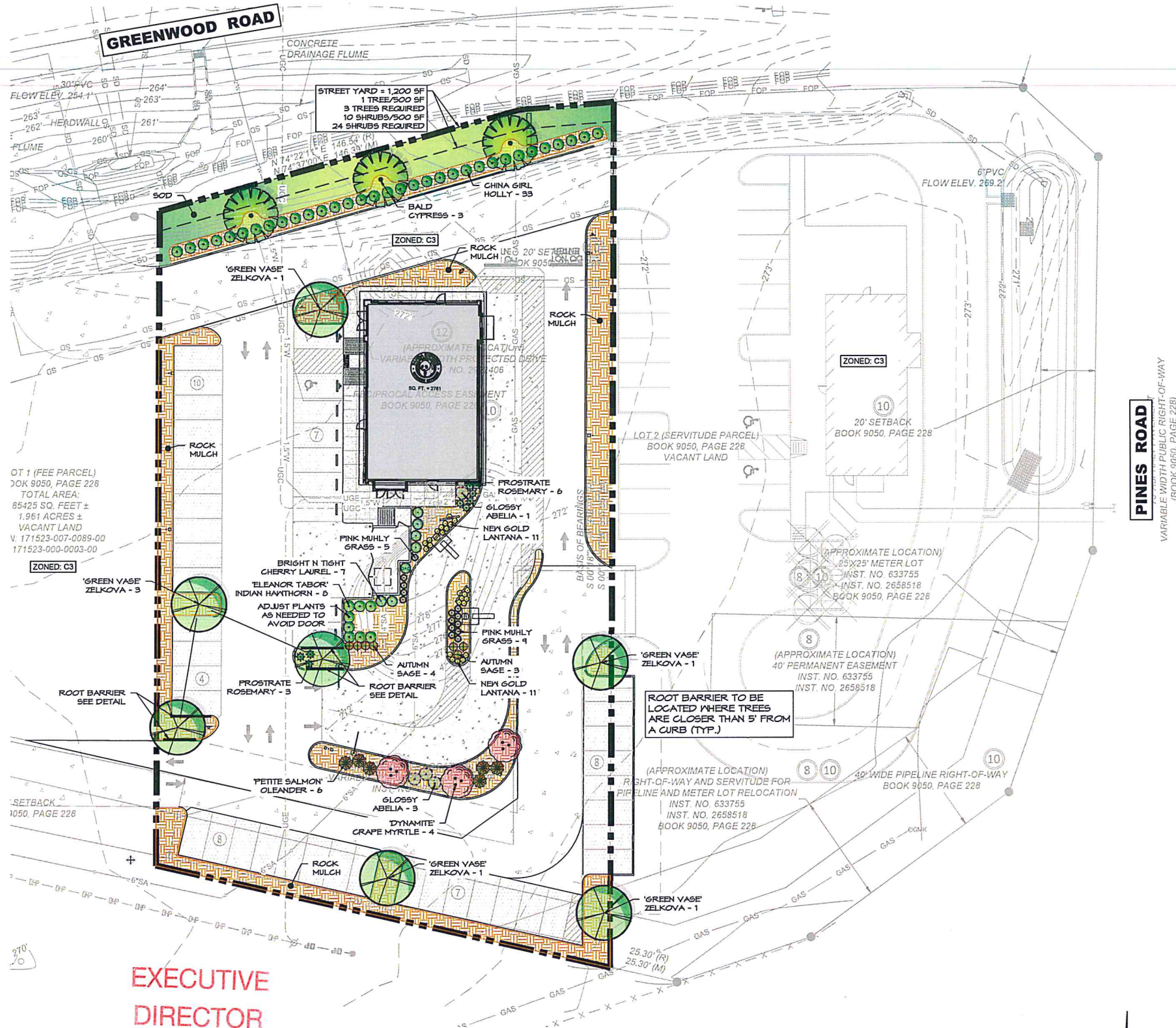
PANDA EXPRESS LANDSCAPE NOTES:

1. WHEN APPLICABLE, IT IS THE CONTRACTOR'S RESPONSIBILITY TO PROTECT EXISTING TREES TO REMAIN. NO HEAVY EQUIPMENT SHOULD BE PERMITTED TO OPERATE OR BE STORED, NOR ANY MATERIALS TO BE HANDLED OR STORED, WITHIN THE DRIP LINES OF TREES OUTSIDE THE LIMIT OF GRADING.
2. THE QUANTITIES INDICATED ON THE PLANT LIST AND PLAN ARE PROVIDED FOR THE BENEFIT OF THE CONTRACTOR. THE CONTRACTOR SHALL BE RESPONSIBLE FOR HIS OWN QUANTITY CALCULATIONS AND THE LIABILITY WHICH PERTAINS TO THOSE QUANTITIES AND TO ANY RELATED CONTRACT DOCUMENTS AND/OR PRICE QUOTATIONS. QUESTIONS SHOULD BE DIRECTED TO THE LANDSCAPE ARCHITECT.
3. ALL PLANT MATERIALS SHALL BE NURSERY GROWN, GRADE "A" QUALITY, UNLESS OTHERWISE NOTED AND SHALL COMPLY WITH THE AMERICAN STANDARD FOR NURSERY STOCK: ANSI Z-60.1; LATEST EDITION, FOR SIZE AND QUALITY.
4. NO SUBSTITUTIONS AS TO TYPE, SIZE, OR SPACING OF PLANT MATERIALS SPECIFIED ON THIS PLAN MAY BE MADE WITHOUT THE APPROVAL OF THE LANDSCAPE ARCHITECT. KITA SUSTAINABLE DESIGNS, LLC (615) 469-1222.
5. THE CONTRACTOR IS TO VERIFY THE EXACT LOCATION OF ALL EXISTING UTILITIES AND TO PROTECT UTILITIES THAT ARE TO REMAIN. THE CONTRACTOR SHALL REPAIR ANY DAMAGE ACCORDING TO LOCAL STANDARDS AT THE CONTRACTOR'S EXPENSE. COORDINATE ALL CONSTRUCTION WITH THE APPROPRIATE UTILITY COMPANY.
6. USE ROCK MULCH IN ALL LANDSCAPE BEDS AND AS NOTED ON THE PLANS. STABILIZE ALL OTHER DISTURBED AREAS WITH SOD. PRIOR TO INSTALLATION, CONTRACTOR TO COORDINATE WITH PANDA EXPRESS PROJECT MANAGER TO VERIFY SOD TYPE TO BE USED. ROLL ALL SOD AFTER PLACING.
7. SOIL USED FOR PLANTING SHALL CONSIST OF (5) PARTS TOPSOIL, (1) PART SAND AND (2) PARTS ORGANIC MATTER, MIXED WITH 1 POUND OF FERTILIZER PER CUBIC YARD.
 - A. SAND SHALL BE CLEAN MASONRY SAND.
 - B. ORGANIC MATTER SHALL BE PEAT MOSS, OR WELL COMPOSTED PINE BARK, OR APPROVED EQUAL AND SHALL BE FINELY GROUND AND FREE OF WEEDS.
 - C. ALL FERTILIZER SHALL BE 10-10-10 WITH MINOR ELEMENTS. FERTILIZER SHALL HAVE 40-50% OF ITS TOTAL NITROGEN IN A WATER INSOLUBLE FORM.
8. PRE-EMERGENT HERBICIDE SHALL BE APPLIED TO ALL PLANT BEDS AND SOD AREAS PRIOR TO INSTALLATION. TRIFLORAL OR AN APPROVED EQUAL SHALL BE USED.
9. ALL PLANT BEDS SHALL HAVE A MINIMUM OF 3" DEEP MULCH. MULCH SHALL BE RIVER ROCK (OR LOCAL EQUAL), 1" - 1.5" DIAMETER STONE.
10. IT IS THE LANDSCAPE CONTRACTOR'S RESPONSIBILITY TO CONFIRM MATERIAL QUANTITIES. IN THE EVENT OF A DISCREPANCY, THE QUANTITIES SHOWN ON THE PLAN SHALL TAKE PRECEDENCE OVER QUANTITIES SHOWN ON THE PLANT LIST.
11. PRIOR TO FINAL PAYMENT, THE LANDSCAPE CONTRACTOR SHALL PROVIDE THE OWNER WITH COMPLETE WRITTEN INSTRUCTIONS ON PROPER CARE OF ALL SPECIFIED PLANT MATERIALS.
12. THE LANDSCAPE INSTALLATION SHALL BE COORDINATED WITH THE IRRIGATION INSTALLATION WHEN APPLICABLE. IRRIGATION TO BE DESIGN-BUILD BY THE G.C.
13. THE LANDSCAPE CONTRACTOR SHALL MAINTAIN POSITIVE DRAINAGE AWAY FROM STRUCTURES AND TAKE SPECIAL CARE TO INSURE THAT BED PREPARATION DOES NOT INHIBIT DRAINAGE.
14. ALL LAWN AREAS SHALL BE CULTIVATED TO A DEPTH OF 4" PRIOR TO SODDING. PREPARED TURF BEDS SHALL BE FREE FROM STONES OVER 2" DIAMETER, WEEDS AND OTHER DELETERIOUS MATERIAL.
15. THE LANDSCAPE CONTRACTOR SHALL RAKE SMOOTH ALL SOD AREAS PRIOR TO INSTALLATION.
16. THE CONTRACTOR SHALL BE RESPONSIBLE FOR BACKFILLING BEHIND THE CURB SO GRADE IS LEVEL WITH TOP OF CURB.
17. CUT AWAY ROPES OR WIRES FROM BAB PLANTS. PULL BACK BURLAP FROM TOP OF ROOT BALL. DO NOT ALLOW BURLAP TO BE EXPOSED AT SURFACE. TOTALLY REMOVE BURLAP IF IT IS SYNTHETIC.
18. IF CONTAINER GROWN PLANTS SHOW SIGNS OF BEING ROOT BOUND, SCORE ROOTS VERTICALLY.
19. ALL PLANT MATERIAL SHALL BE GUARANTEED FOR ONE YEAR FROM DATE OF FINAL ACCEPTANCE.
20. ALL REPLACEMENTS SHALL BE OF THE SAME TYPE, SIZE, AND QUALITY AS SPECIFIED ON THE PLANT LIST, UNLESS APPROVED OTHERWISE IN WRITING BY THE LANDSCAPE ARCHITECT.
21. ANY MATERIAL THAT IS DEEMED TO BE 25% DEAD OR MORE SHALL BE CONSIDERED DEAD, AND MUST BE REPLACED AT NO CHARGE. A TREE IS CONSIDERED DEAD WHEN THE MAIN LEADER HAS DIED BACK, OR MORE THAN 25% OF THE CROWN IS DEAD.
22. REPLACEMENTS SHALL BE MADE DURING THE NEXT PLANTING SEASON UNLESS THE LANDSCAPE CONTRACTOR AGREES TO AN EARLIER DATE.

PLANTING DATES
 SPRING: MARCH 15 - APRIL 15
 FALL: OCTOBER 1 - NOVEMBER 30
23. THE LANDSCAPE CONTRACTOR WILL NOT BE RESPONSIBLE FOR PLANT MATERIAL THAT HAS BEEN DAMAGED BY VANDALISM, FIRE, RELOCATION, WILDLIFE, THEFT, OR OTHER ACTIVITIES BEYOND THE LANDSCAPE CONTRACTOR'S CONTROL.
24. GENERAL CONTRACTOR TO COORDINATE AND BE RESPONSIBLE FOR WATERING ALL PLANTS AND TURF AREAS AFTER PLANTING UNTIL IRRIGATION SYSTEM IS OPERABLE.
25. CONTRACTOR TO IRRIGATE ALL NEW LANDSCAPE PLANTINGS AND LAWN AREAS WITH AN AUTOMATED UNDERGROUND IRRIGATION SYSTEM. IRRIGATION SYSTEM TO BE DESIGN-BUILD BY G.C.
26. IRRIGATION TO HAVE A SEPARATE METER.
27. PLANT MATERIAL SHALL BE APPROPRIATE FOR THE APPLICABLE USDA PLANT HARDINESS ZONE.
28. SPECIES MUST MEET BOTH MINIMUM CALIPER OR GALLON SIZE AND HEIGHT IF LISTED.
29. LANDSCAPE CONTRACTOR TO MAINTAIN LANDSCAPING FOR 90 DAYS AFTER TURNOVER. MAINTENANCE SHALL INCLUDE MOWING, EDGING AND TRIMMING SHRUBS

LANDSCAPE BED NOTES:

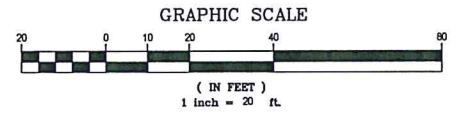
1. ALL LANDSCAPE BEDS SHOULD BE PREPARED 3" BELOW GRADE PRIOR TO START.
2. APPLY PRE-EMERGENT TO ALL LANDSCAPE BEDS AS SUGGESTED PER MANUFACTURER'S SPECIFICATIONS. (SEE NOTE #8)
3. APPLY PERMEABLE WEED BARRIER TO ALL LANDSCAPE BEDS.
4. INSTALL RIVER ROCK MULCH (OR LOCAL EQUAL) (1" - 1.5" DIAMETER), APPROXIMATELY 3" DEEP IN ALL LANDSCAPE BEDS OVER WEED BARRIER.



**EXECUTIVE
DIRECTOR
APPROVAL**

1-19-24
Date By *An Obit*

LANDSCAPE CALCULATIONS		
SITE AREA:	46,539 SF	(1.07 AC)
ZONING:	REQUIRED	PROVIDED
SHADE TREE PLANTING:		
C-3 (2 TREES/ACRE)	2.1	2
INTERIOR PARKING AREA:	-	31,785 SF
PLANTING AREA: (MIN.)	10%	13.7%
PLANTING AREA: (SQ. FT.)	3,179 SF	4,356 SF
PARKING SPACES:	-	47
1 TREE / 10 SPACES:	4.7	5



KITA designs
 Kevin Reff, PLA
 3369 Reids Chapel Rd.
 Campbellsville, KY 42718
 (615) 469-1222 Ofc.
 (615) 594-7333 Cell.
 kreff@kitadesign.biz



PANDA EXPRESS, INC.
 1683 Walnut Grove Ave.
 Rosemead, California
 91770
 Telephone: 626.799.8668
 Facsimile: 626.372.8268

All ideas, designs, arrangement and plans indicated or represented by this drawing are the property of Panda Express Inc. and were created for use on this specific project. None of these ideas, designs, arrangements or plans may be used by or disclosed to any person, firm, or corporation without the written permission of Panda Express Inc.

REVISIONS:

NO.	DATE	DESCRIPTION

ISSUE DATE:
 1ST XXXXXX XX-XX-22

DRAWN BY: JRJ
 PANDA PROJECT #: 58-24-D27043
 PANDA STORE #: D27043
 ARCH PROJECT #: XXX

Civil Engineering Services
 Engineering, Land Planning,
 and Environmental
CEs
 7705 Spicer Farm Lane
 Fairview, Tennessee
 37062
 Phone: (615) 533-0401
 e-mail: rzy@civilengservices.net

PANDA EXPRESS
 TRUE WARM & WELCOME
 INTERSTATE 20 & PINES ROAD
 SHREVEPORT, LA 71129

LANDSCAPE PLAN
L01.0

TRUE WARM & WELCOME 2600 RX

ISSUE FOR CONSTRUCTION XXX-XXX-XXX



PANDA EXPRESS, INC.
1683 Walnut Grove Ave.
Rosemead, California
91770
Telephone: 626.799.9898
Facsimile: 626.372.8288

All ideas, designs, arrangements and plans indicated or represented by this drawing are the property of Panda Express Inc. and were created for use on this specific project. None of these ideas, designs, arrangements or plans may be used by or disclosed to any person, firm, or corporation without the written permission of Panda Express Inc.

REVISIONS:

NO.	DATE	DESCRIPTION

ISSUE DATE:

1ST	XXXXXX	XX-XX-XX
-----	--------	----------

DRAWN BY: JRJ

PANDA PROJECT #: S8-24-D27043
PANDA STORE #: D27043
ARCH PROJECT #: XXX

Civil Engineering Services
Engineering, Land Planning,
and Environmental

7705 Spicer Farm Lane
Fairview, Tennessee
37062
Phone: (615) 533-0401
e-mail: cry@civilengineeringns.com

PANDA EXPRESS
TRUE WARM & WELCOME
INTERSTATE 20 & PINES ROAD
SHREVEPORT, LA 71129

LANDSCAPE PLAN
L01.1

TRUE WARM & WELCOME 2600 FX

ISSUE FOR CONSTRUCTION XXX-XX-XXXX

PLANT SCHEDULE						
QTY.	COMMON NAME	BOTANICAL NAME	HEIGHT	TRUNK	COMMENTS	
CANOPY TREES						
3	Bald Cypress	Taxodium distichum	12' - 14'	3" Cal.	B&B	
7	'Green Vase' Japanese Zelkova	Zelkova serrata 'Green Vase'	12' - 14'	3" Cal.	B&B	
0	Tulip Poplar	Liriodendron tulipifera	12' - 14'	3" Cal.	B&B	
10	TOTAL - CANOPY TREES					
UNDERSTORY/COLUMNAR TREES						
3	'Dynamite' Crapemyrtle	Lagerstroemia indica 'Whit II'	6' - 7'	2" Cal.	Multi-Trunk, Min. (3) 2" canes	
3	TOTAL - UNDERSTORY TREES					
13	TOTAL - ALL TREES					
SHRUBS						
7	Autumn Sage	Salvia greggii	18" Min.	3 Gal.	Container	
7	'Bright N Tight' Cherry Laurel	Prunus caroliniana 'Monus'	18" Min.	5 Gal.	Container	
33	'China Girl' Holly	Ilex x meserveae 'Mesog'	24" Min.	5 Gal.	Container	
8	'Eleanor Tabor' Indian Hawthorn	Rhapholepis indica 'Conor'	18" Min.	3 Gal.	Container	
4	Glossy Abelia	Abelia grandiflora	18" Min.	3 Gal.	Container	
6	Petite Salmon Oleander	Nerium oleander 'Petite Salmon'	18" Min.	3 Gal.	Container	
65	TOTAL - SHRUBS					
GRASSES, PERENNIALS AND GROUND COVER						
22	'New Gold' Lantana	Lantana x 'New Gold'	1 Gal.	1 Gal.	Container	
14	Pink Muhly Grass	Muhlenbergia capillaris 'Lenca'	1 Gal.	1 Gal.	Container	
9	Prostrate Rosemary	Rosmarinus officinalis 'Prostratus'	1 Gal.	1 Gal.	Container	
TURF						
-	Bermuda Seed/Sod	Cynodon dactylon				
MULCH						
	ROCK MULCH	ROCK MULCH, BUFFALO RIVER ROCK OR APPROVED EQUAL. 1" - 1.5" ROCK SIZE AND 3" DEEP.				

UB 18-2 Specifications
18" DeepRoot® Tree Root Barrier

Specified tree root barrier is a mechanical barrier and root deflector used to prevent tree roots from damaging hardscapes and landscapes. Assembled in 24" (609 mm) long modules to create varying lengths for linear applications, or perimeter around applications in varying sizes.

A. Materials
1. The contractor shall furnish and install tree root barrier as specified. The tree root barrier shall be either product #0318-2 as manufactured by DeepRoot® Green Infrastructure, LLC, 530 Washington Street, San Francisco, CA, www.deeproot.com (800.438.7968).

2. Root barrier shall be recyclable, black, injection molded panels with 0.75" (1.90 mm) wall thickness in modules 24" (609 mm) long and 18" (460 mm) deep.

3. Root barrier shall be manufactured with 70% reprocessed polypropylene with added ultraviolet inhibitors.

4. Root barrier shall be comprised of 24" (609 mm) panels. Each panel shall have no less than four (4) Molded Integral Vertical Root Directing Ribs of a minimum 0.060" (1.52 mm) thickness, protruding 1/2" (12.7 mm) at 90° from interior of the barrier panel, spaced 6" (152.4 mm) apart. (See Details A & D)

5. Root barrier shall have a Double Top Edge consisting of two parallel, integral, horizontal ribs at the top of the panel at 0.060" (1.52 mm) thickness, 3/8" (9.53 mm) wide and 1/4" (6.35 mm) apart with the lower rib attached to the vertical root directing ribs. (See Detail A).

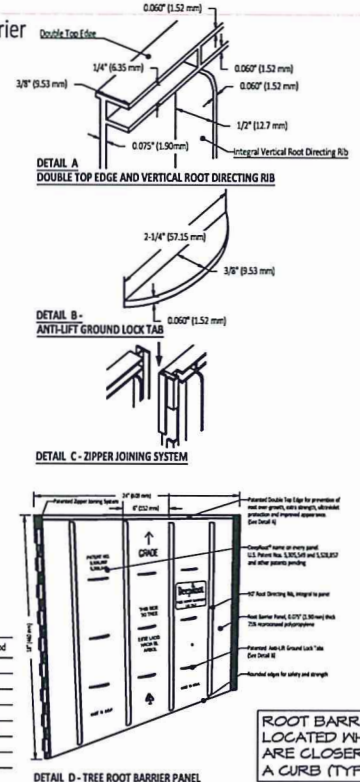
6. Root barrier shall have a minimum of nine (9) Anti-Lift Ground Lock Tabs consisting of integral horizontal ridges of minimum 0.060" (1.52 mm) thickness in the shape of a segment of a circle, the 2-1/4" (57.15 mm) chord of the segment joining the panel wall and the segment, protruding 3/8" (9.53 mm) from the panel. The ground locks on each panel shall be about equally spaced between each of the vertical root directing ribs. (See Details B & D).

7. Root barrier shall have an Integrated Zipper Joining System for assembly by sliding one panel into another (See Detail C).

U.S. Patents: 5,305,549; and 5,528,857. Other Patents Pending.

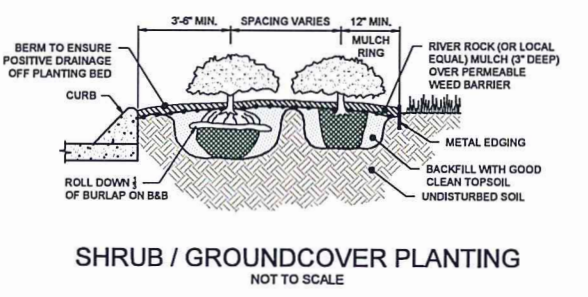
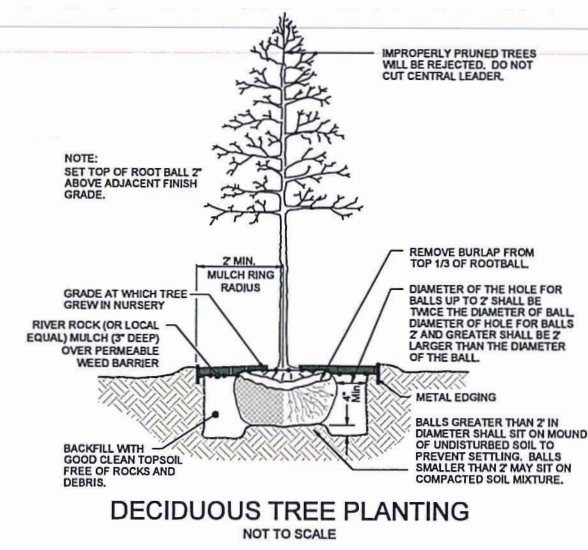
Properties

Tensile strength @ yield - Wall	2,354 PSI	D638
Tensile strength @ yield - Hinge	2,846 PSI	D638
Yield Elongation - Wall	7.44%	D638
Yield Elongation - Hinge	7.01%	D638
Residual Modulus	119.625 PSI	D790B
Notched Izod Impact - Wall	3.84 (ft.-lb)	D255A
Rockwell Hardness r. scale - Wall	84.4	D785A



ROOT BARRIER TO BE LOCATED WHERE TREES ARE CLOSER THAN 5' FROM A CURB (TYP.)

ROOT BARRIER PANEL
NOT TO SCALE



EXECUTIVE
DIRECTOR
APPROVAL

1-19-24
Date

[Signature]
By

Kevin Reff, PLA
3369 Reids Chapel Rd.
Campbellsville, KY 42718
(615) 469 - 1222 Ofc.
(615) 594 - 7333 Cell.
kreff@kitadesign.biz

LAONECALL.COM

