

1 2 3 4 5 6 7

A B C D E

SITE PLAN PROJECT SUMMARY

ZONING CLASSIFICATION
 JURISDICTION CITY OF SHREVEPORT
 ZONING DISTRICT B-2A

SITE AREA
 104,984 SF (4.4 acres)

BUILDING AREA
 EXISTING BUILDING 20,731.8 SF
 BUILDING ADDITION
 GROUND FLOOR 29,700.1 SF
 SECOND FLOOR 29,362.4 SF
 CANOPY 1,565.0 SF
 TOTAL BUILDING 81,359.3 SF

PARKING SUMMARY

USER	RATIO REQ'D	SPACES REQ'D	SPACES PROVIDED
STORAGE FACILITY	1.3 EMP/VEHICLES	1	24
RETAIL SPACE	1,200 SF	24	
TOTALS		25	42

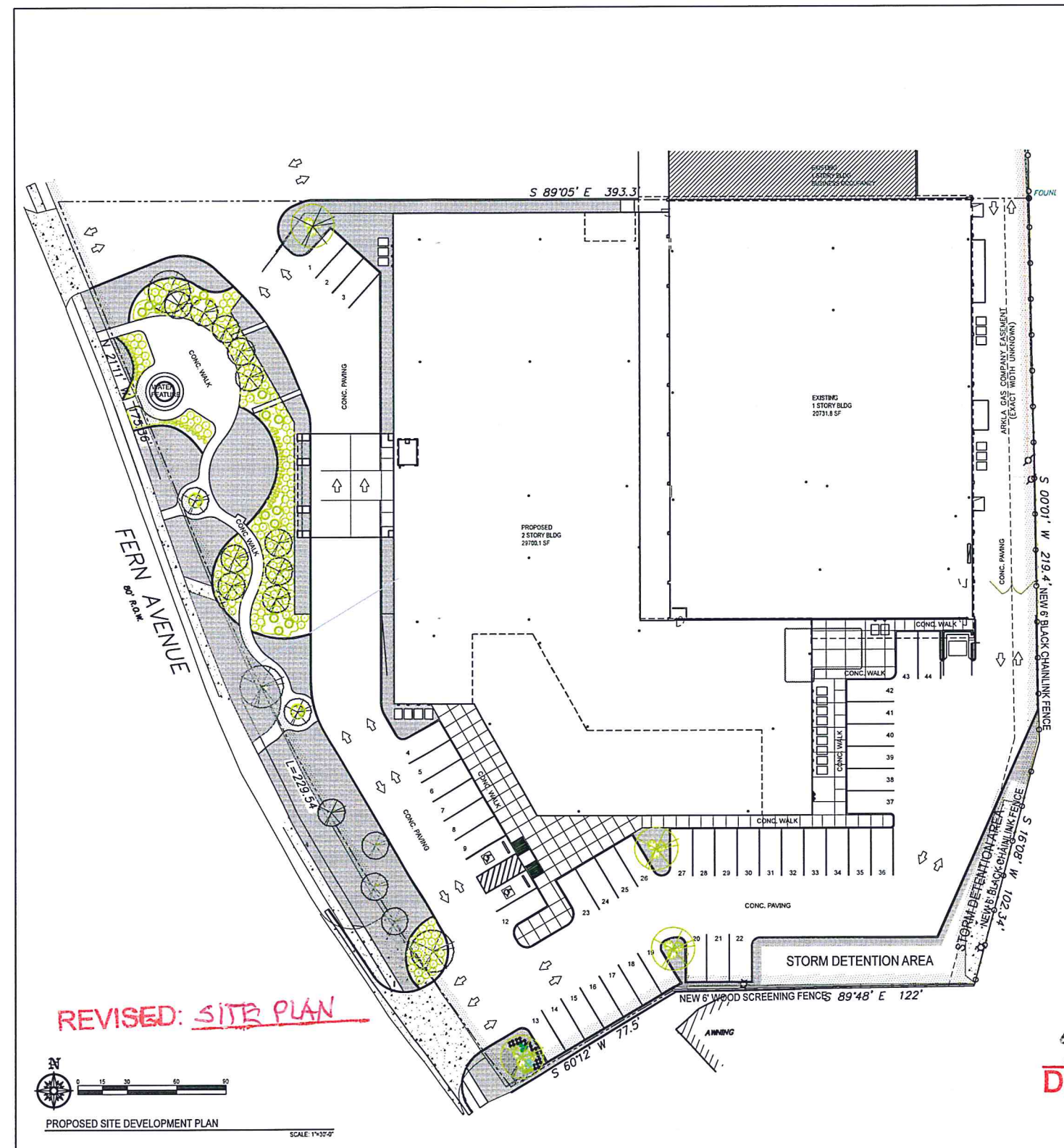
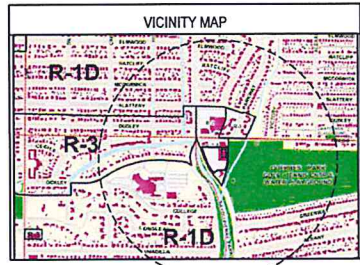
BUILDING SETBACKS

	REQ'D	PROVIDED
BUILDING SETBACK (FRONT)	30 FEET	39 FEET
BUILDING SETBACK (SIDE)	9 FEET	58 FEET
BUILDING SETBACK (REAR)	25 FEET	25 FEET

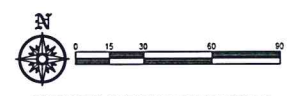
LANDSCAPE REQUIREMENTS

STREET FRONTAGE (FERN AVE)	LENGTH	TREES REQ'D	TREES PROVIDED
	404.9 FEET	13.5 SML OR 6.75 LGR	14 SML

PARKING AREA 25 SF : PARKING SPACE 1:10 SPACES (6.4 LGR) 6 LGR, 2 SML

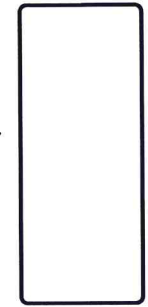


REVISED: SITE PLAN



PROPOSED SITE DEVELOPMENT PLAN
 SCALE: 1"=30'-0"

DATE	DESCRIPTION



12/14/2017
 IF A PORTION OF THIS PLAN OR
 THEREIN IS NOT APPROVED BY THE
 BOARD OF SUPERVISORS, THE BOARD
 OF SUPERVISORS SHALL NOT BE
 BOUND BY THE SAME AND THE DATE
 OF RE-EVALUATION AND RE-APPROVAL
 IS TO BE DETERMINED BY THE BOARD.

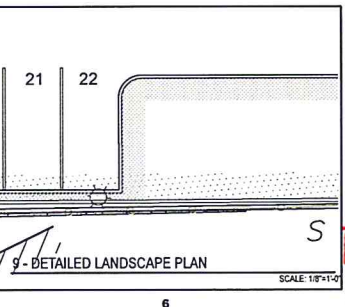
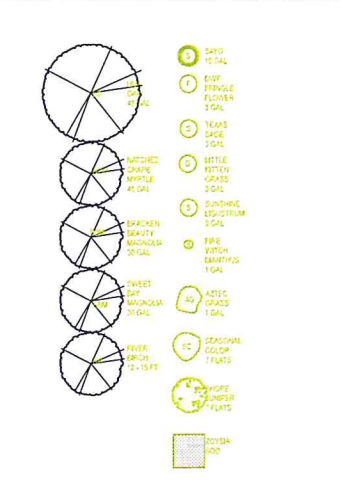
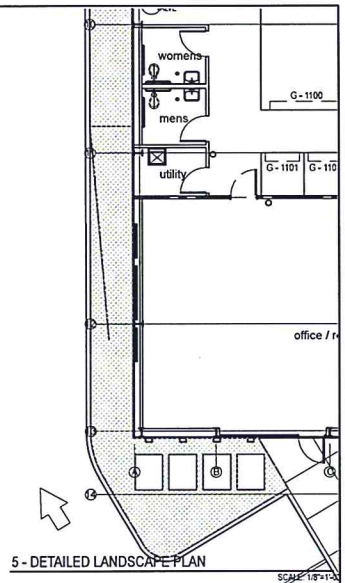
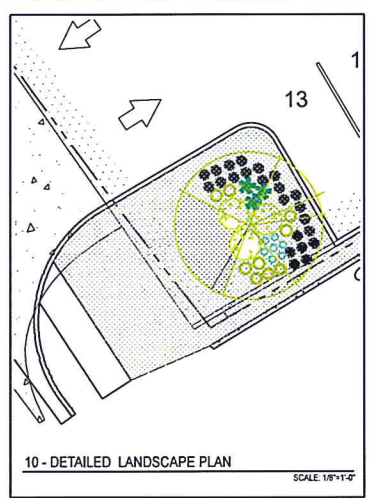
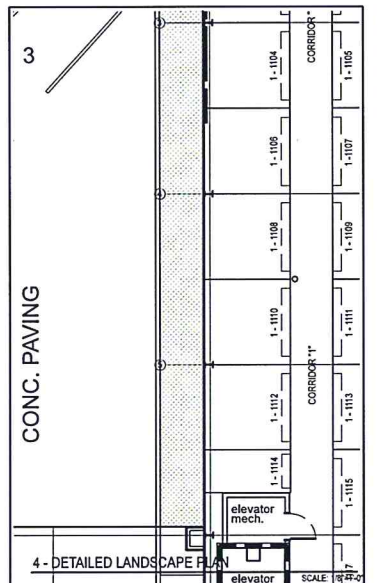
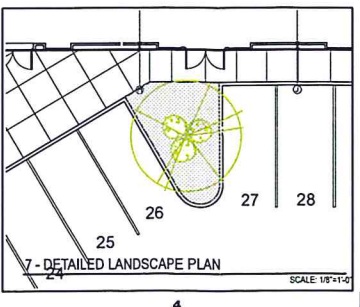
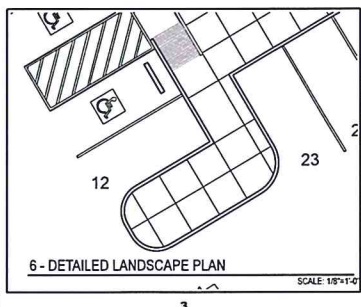
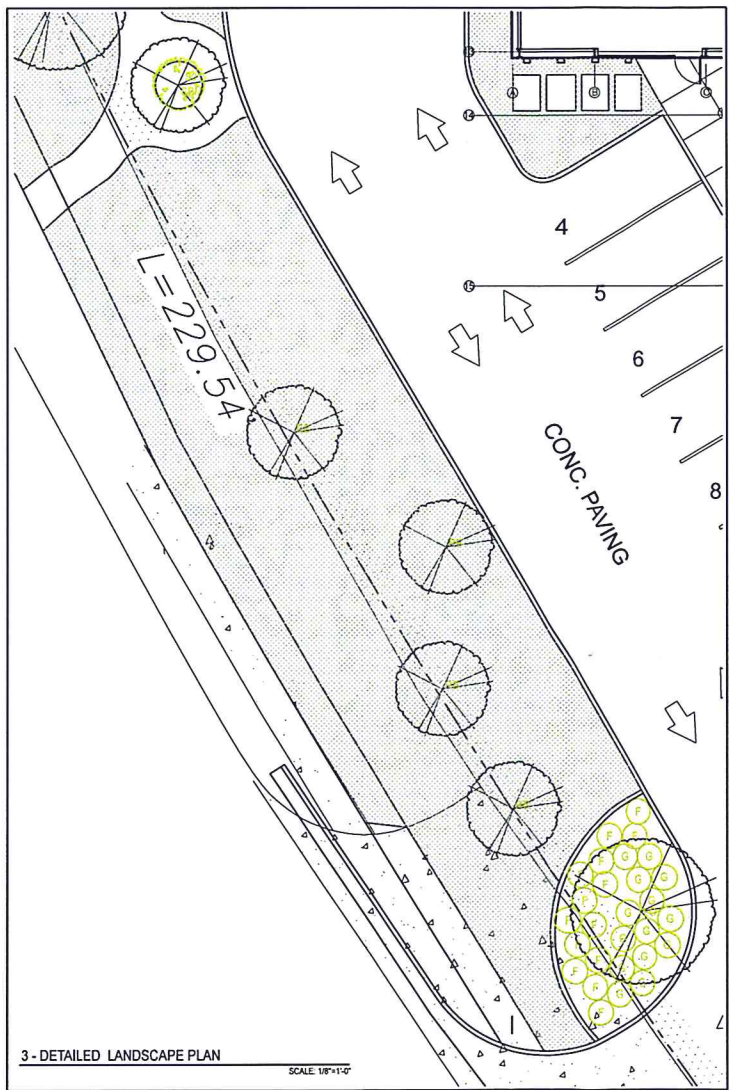
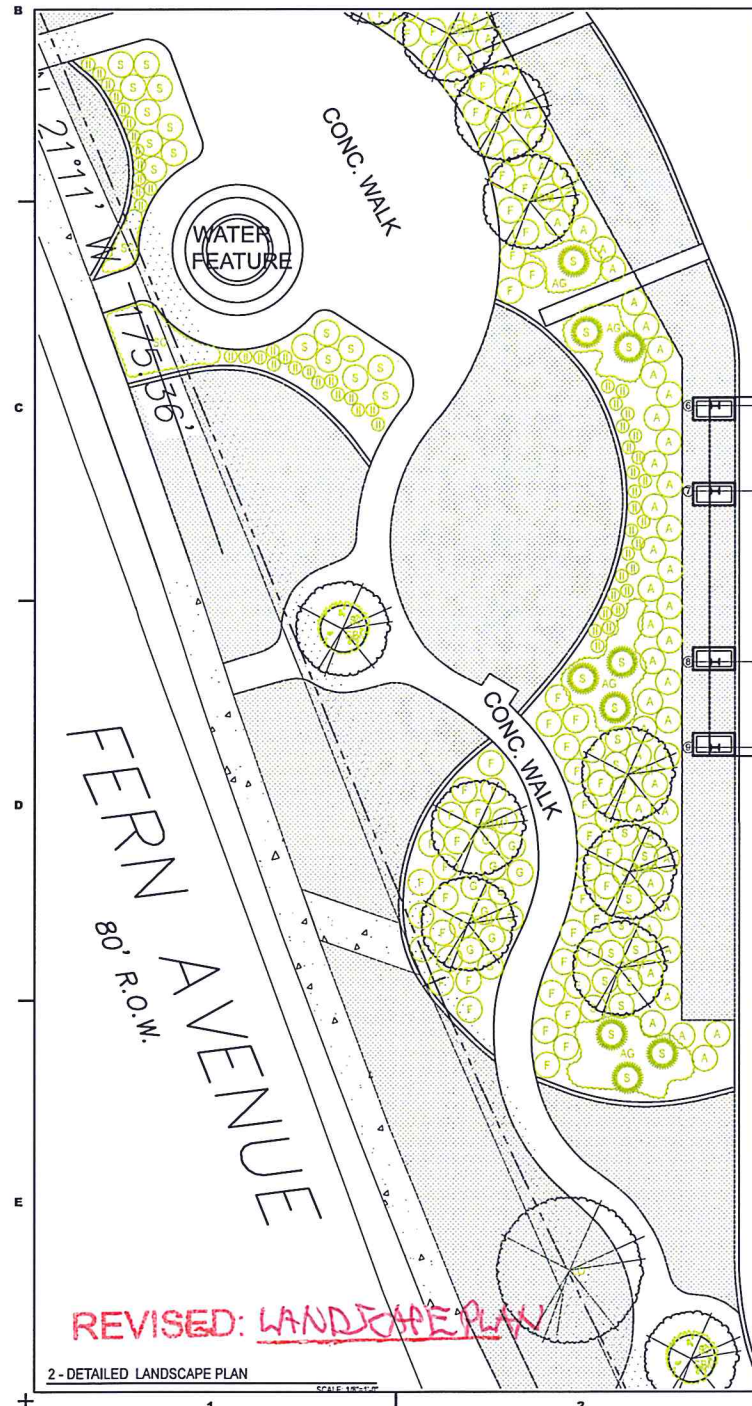
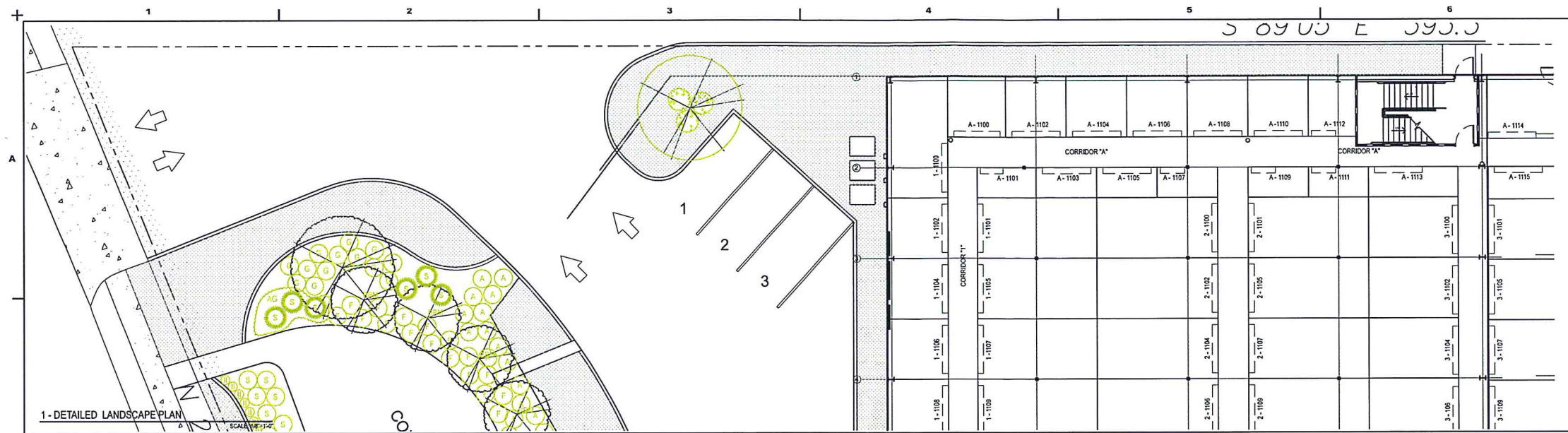
CONSULTING ARCHITECTS
THE LARSON GROUP
 138 EAST OLIVE STREET
 SHREVEPORT, LA 71104
 (504) 835-5565
 info@larson.com

PERSONAL STORAGE SPACE DEVELOPMENT
 FERN AVENUE
 SOUTHERN STORAGE CENTERS
 SHREVEPORT, LOUISIANA 71105
 SOUTHERN STORAGE CENTERS: OWNER

**EXECUTIVE
 DIRECTOR
 APPROVAL**

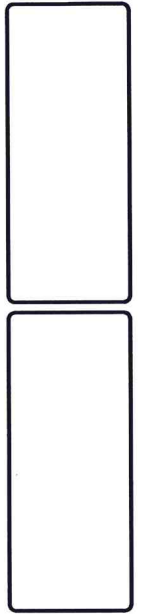
4/11/18 Date By *my*

DATE	TITLE
DESIGNED BY	TITLE
CHECKED BY	DECEMBER 14, 2017
DATE	2018.05
PROJECT	SITE DEVELOPMENT PLAN
PROJECT NUMBER	SD1.0



- 20-40 feet tall
- Cape Hatteras Lagerstroemia - 32" SPACING
 - Flowering Dogwood (Cornus Florida) 20 ft. 30" SPACING
 - Bradford Pear (Pyrus calleryana) 40 ft. 30" SPACING
- 30-36 inches tall
- AFRICAN IRIS - 42" SPACING
 - GEORGIA PETITE INDIAN HAWTHORN - 32" SPACING
 - BLACK FLOWERING FOUNTAIN GRASS - 27" SPACING
 - BLONDE AMBITION BLUE GRAMA GRASS - 27" SPACING
 - AGAPANTHUS - 27" SPACING
- 20-29 inches tall
- AUTUMN CLOW MULHLY - 22" SPACING
 - TICKSEED (COREOPSIS) - 12" SPACING
 - COSMIC EYE
 - FULL MOON
 - MERCURY RISING
 - RED SHIRT
 - TICKSEED (COREOPSIS) - 18" SPACING
 - AUTUMN BLUSH
 - BECCA (TM) FLAX LILY - 18" SPACING
 - CONE FLOWERS - 21" SPACING
- 12-19 inches tall
- ALL GOLD JAPANESE FOREST GRASS - 18" SPACING
 - ANNA'S MAGIC BALL ARBORVITAE - 12" SPACING
 - ASIAN SPYRUS (SALVIA) - 18" SPACING
 - LANTANA - 18" SPACING
 - BLUE HILL MEADOW SAGE (SALVIA) - 18" SPACING
 - AZTEC GRASS (LIRIOPE) - 15" SPACING
 - BIG BLUE LIRIOPE - 18" SPACING
 - BABY PETE LILY OF THE MILE - 14" SPACING
 - ARCADIA JUNIPER - 60" SPACING
 - ABSOLUTELY AMETHYST - 9" SPACING
 - ARBORVITAE FERN - 18" SPACING
- 2-11 inches tall
- BLUE CARPET SPEEDWELL - 12" SPACING
 - ALPINE CLOVER - 3" SPACING
- EXECUTIVE**
DIRECTOR
APPROVAL
- Date: 4/11/18 By: [Signature]

DATE	DESCRIPTION



IF A MEMBER OF THE LARSON GROUP HAS BEEN CONTACTED BY THE STATE OF LOUISIANA REGARDING THE PROVISIONS OF THE PROPOSED DEVELOPMENT, PLEASE CONTACT THE LARSON GROUP IMMEDIATELY AT THE ADDRESS OR PHONE NUMBER LISTED BELOW. THE LARSON GROUP WILL BE RESPONSIBLE FOR THE COSTS OF SUCH INVESTIGATION AND A SPECIAL INSPECTION OF THE DEVELOPMENT.

CONSULTING ARCHITECT

THE LARSON GROUP

1518 EAST BLUE STREET
SHREVEPORT, LOUISIANA 71104
(504) 485-8585

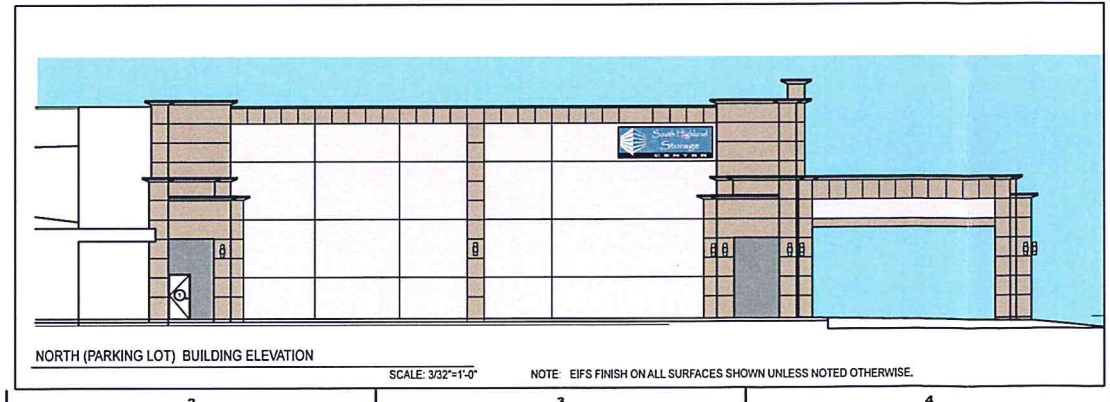
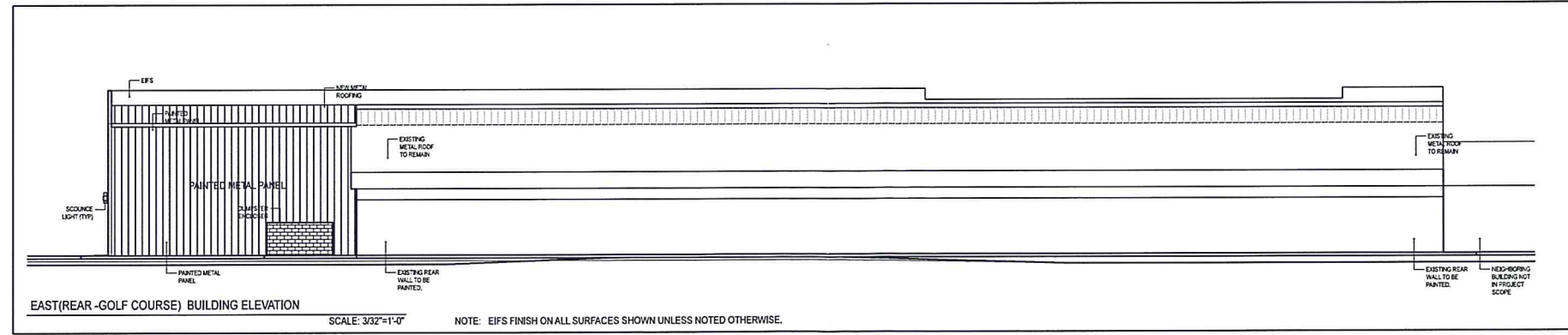
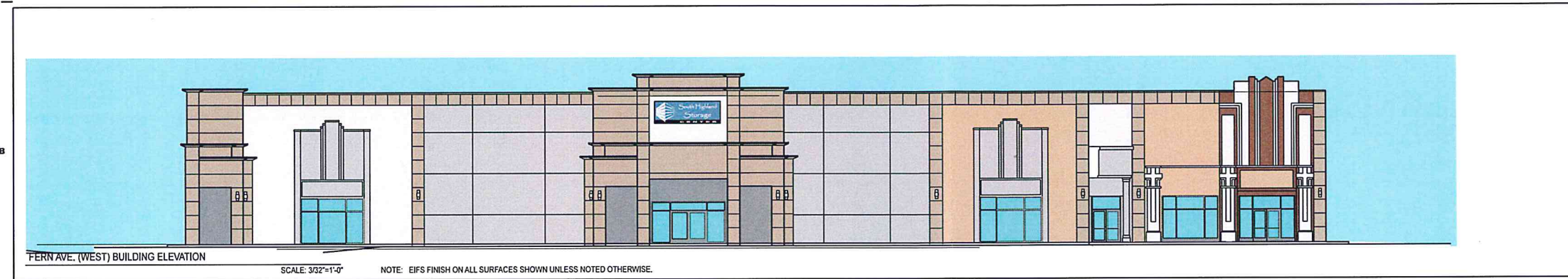
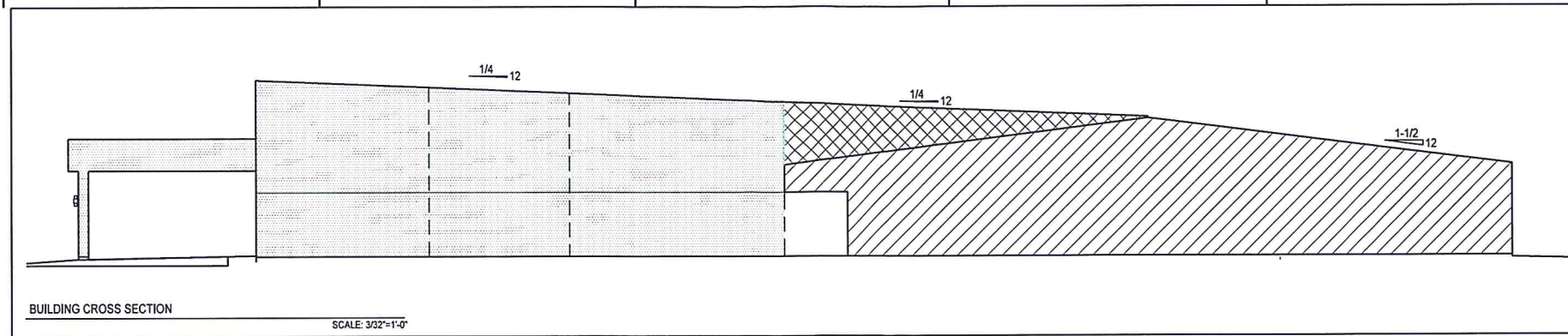
DETAILED LANDSCAPE SITE PLAN
PERSONAL STORAGE SPACE DEVELOPMENT
FERN AVENUE
SOUTHERN STORAGE CENTERS
SHREVEPORT, LOUISIANA 71105
SOUTHERN STORAGE CENTERS - OWNER

DATE	TITLE

DATE: DECEMBER 14, 2017

SCALE: 2015.86

PROJECT: L1.1



DATE	DESCRIPTION	REVISIONS



12/14/2017

IF A HOLDER OF THE LICENSE FOR PROFESSIONAL ARCHITECTURE OR PROFESSIONAL ENGINEERING IN THE STATE OF LOUISIANA FAILS TO MAINTAIN THE STATUS OF AN ACTIVE LICENSEE BY THE EXPIRATION DATE OF HIS OR HER LICENSE, HE OR SHE SHALL BE CONSIDERED TO BE A NON-RENEWED LICENSEE AND THE DATE OF REACTIVATION AND A SPECIAL APPLICATION FOR THE REACTIVATION.

CONSULTING ARCHITECT
THE LARSON GROUP
118 EAST OLIVE STREET
SHREVEPORT, LOUISIANA 71105
(318) 482-8485
www.thelarsongroup.com

BUILDING ELEVATIONS AND SECTION
PERSONAL STORAGE SPACE DEVELOPMENT
FERN AVENUE
SOUTHERN STORAGE CENTERS
SHREVEPORT, LOUISIANA 71105
SOUTHERN STORAGE CENTERS - OWNER

DATE BY	TFL
CHECKED BY	TFL
DATE	DECEMBER 14, 2017
REV. NO.	2016.55

BUILDING ELEVATIONS AND SECTION
A5.0

EXECUTIVE DIRECTOR APPROVAL
REVISÉ: ELEVATIONS
Date 4/15/18 By [Signature]