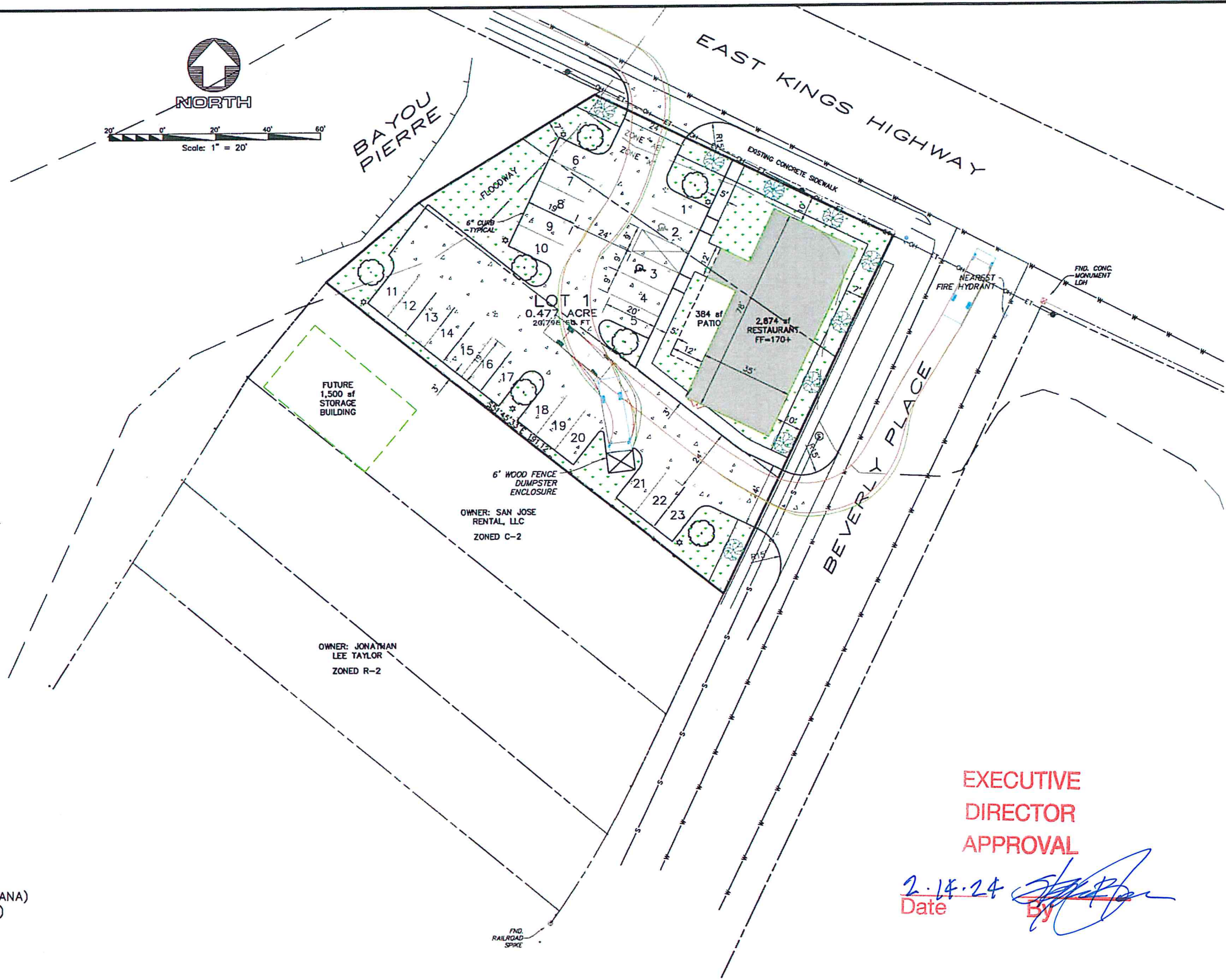
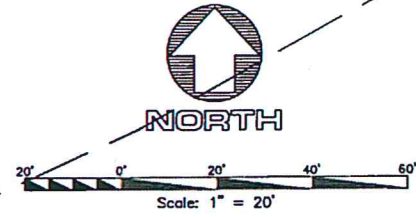


VICINITY MAP



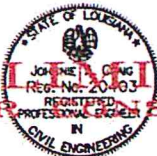
PROPOSED LANDSCAPING LEGEND

- ORNAMENTAL TREE - 9
- 5-CRAPE MYRTLE(LAGERSTROEMIA INDICA)
- 4-SWEET OSMANTHUS
- SHADE TREE - 7
- 4-SWEET BAY MAGNOLIA(MAGNOLIA VIRGINIANA)
- 3-TULIP POPLAR(LIRIODENDRON TULIPIFERA)

**EXECUTIVE
DIRECTOR
APPROVAL**

[Signature]
Date 2-14-24 By [Signature]

PRELIMINARY
NOT FOR CONSTRUCTION

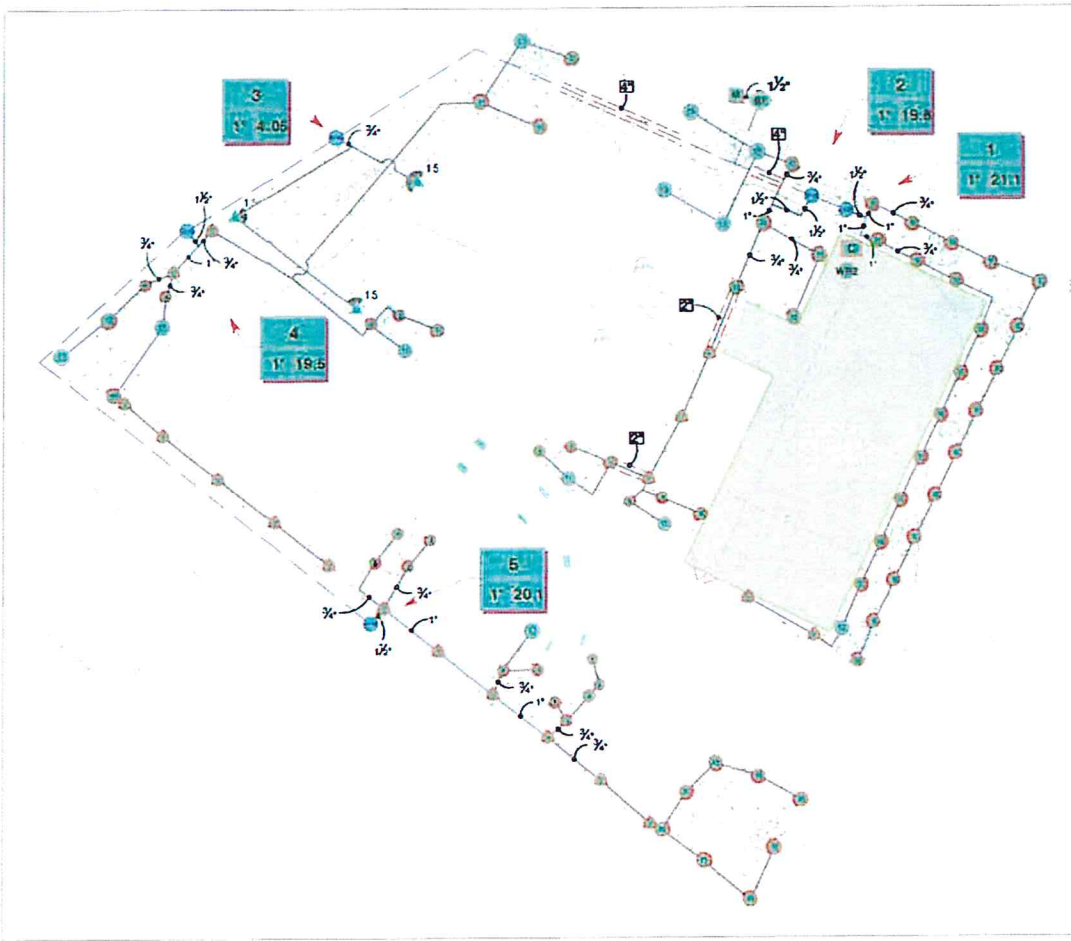


LOCATED IN ZONES "AE" & "X"(SHADED) AS PER
FEMA MAP NUMBER 2201700476H, EFFECTIVE DATE
MAY 19, 2014.

PROPOSED LOT 1, BROADMOOR SUBDIVISION UNIT 6
SECTION 17 T17N-R13W, CADDO PARISH, LA.
AREA=0.477 AC.± ZONED C-2

LA VENTA, L.L.C.
502 E. KINGS HWY.
SHREVEPORT, LA. 71105

DATE	
REVISIONS	
NO.	
Mohr and Associates, Inc. Consulting Civil Engineers & Land Surveyors 1324 N. Hearne Ave., Ste 301 Phone: (318) 686-7190 Shreveport, Louisiana 71107 Fax: (318) 402-4400	
EL COMPADRE RESTAURANT EAST KINGS HIGHWAY @ BEVERLY PLACE CONCEPTUAL SITE PLAN	
FOR: LA VENTA, LLC	
Date	1-08-2024
Scale	1"=20'
Job	38615
Drawn	DBA
Sheet	1
of 1 Sheets	

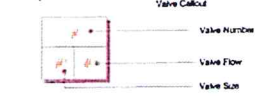


VALVE SCHEDULE

NUMBER	MODEL	SIZE	TYPE	GPM	WIRE	PSI	PSI @ POC	PRECIP
1	Rain Bird PGA Globe	1"	Turf Spray	21.1	17.4	38.8	46.2	1.44 in/h
2	Rain Bird PGA Globe	1"	Turf Spray	19.75	17.4	38.2	44.9	1.37 in/h
3	Rain Bird PGA Globe	1"	Turf Rotor	4.05	131.7	40.6	44.4	0.5 in/h
4	Rain Bird PGA Globe	1"	Turf Spray	19.47	168.8	37.7	45.3	1.32 in/h
5	Rain Bird PGA Globe	1"	Turf Spray	20.15	301.0	39.0	47.9	1.34 in/h
	Common Wire				311.7			

IRRIGATION SCHEDULE

SYMBOL	MANUFACTURER/MODEL/DESCRIPTION	QTY
	Rain Bird 1804 15 Strip Series Turf Spray 4.0in. Pop-Up Sprinkler with Co-Molded Wiper Seal. 1/2in. NPT Female Threaded Inlet.	18
	Rain Bird 1804 8 Series MPR Turf Spray 4.0in. Pop-Up Sprinkler with Co-Molded Wiper Seal. 1/2in. NPT Female Threaded Inlet.	14
	Rain Bird 1804 10 Series MPR Turf Spray 4.0in. Pop-Up Sprinkler with Co-Molded Wiper Seal. 1/2in. NPT Female Threaded Inlet.	28
	Rain Bird 1804 12 Series MPR Turf Spray 4.0in. Pop-Up Sprinkler with Co-Molded Wiper Seal. 1/2in. NPT Female Threaded Inlet.	4
	Rain Bird 1804 15 Series MPR Turf Spray 4.0in. Pop-Up Sprinkler with Co-Molded Wiper Seal. 1/2in. NPT Female Threaded Inlet.	13
	Rain Bird 1804 ADJ Turf Spray 4.0in. Pop-Up Sprinkler with Co-Molded Wiper Seal. 1/2in. NPT Female Threaded Inlet.	17
SYMBOL	MANUFACTURER/MODEL/DESCRIPTION	QTY
	Rain Bird 5004-PL-PC 1.5 Turf Rotor, 4.0in. Pop-Up, Plastic Riser. Adjustable to Full Circle. Standard Angle Nozzle and Flow Shut-Off Device.	3
SYMBOL	MANUFACTURER/MODEL/DESCRIPTION	QTY
	Rain Bird PGA Globe 1" 1in., 1-1/2in., 2in. Electric Remote Control Valve, Globe.	5
	Zurn 720A 1" Pressure Vacuum Breaker	1
	Rain Bird ESP4ME3 with (1) ESP-SM3 7 Station, Hybrid Modular Outdoor Controller. For Residential or Light Commercial Use. LNK WiFi Module and Flow Sensor Ready.	1
	Rain Bird WR2-RFC Wireless Rain and Freeze Sensor Combo, includes 1 receiver and 1 rain/freeze sensor transmitter.	1
	Water Meter 1"	1
	Irrigation Lateral Line: PVC Class 200 SDR 21 3/4"	1,107 l.f.
	Irrigation Lateral Line: PVC Class 200 SDR 21 1"	71.6 l.f.
	Irrigation Lateral Line: PVC Class 200 SDR 21 1 1/2"	23.1 l.f.
	Irrigation Mainline: PVC Class 200 SDR 21 1 1/2"	311.7 l.f.
	Pipe Sleeve: PVC Schedule 40 2"	21.8 l.f.
	Pipe Sleeve: PVC Schedule 40 4"	33.8 l.f.



NOZZLE SCHEDULE

SYMBOL	MANUFACTURER/MODEL	QTY
	Rain Bird 1804 15EST	8
	Rain Bird 1804 15SST	10
	Rain Bird 1804 08H	12
	Rain Bird 1804 08Q	2
	Rain Bird 1804 10H	24
	Rain Bird 1804 10Q	4
	Rain Bird 1804 12H	3
	Rain Bird 1804 12Q	1
	Rain Bird 1804 15H	3
	Rain Bird 1804 15Q	10
	Rain Bird 1804 06V	2
	Rain Bird 1804 08V	3
	Rain Bird 1804 10V	4
	Rain Bird 1804 12V	1
	Rain Bird 1804 15V	3
	Rain Bird 1804 18V	4

CRITICAL ANALYSIS

Generated: 2024-01-30 14:23

P.O.C. NUMBER: 01
Water Source Information:

FLOW AVAILABLE
Water Meter Size: 1"
Flow Available: 37.5 GPM

PRESSURE AVAILABLE
Static Pressure at POC: 80 PSI
Elevation Change: 5.00 ft
Service Line Size: 2"
Length of Service Line: 10 ft
Pressure Available: 78 PSI

DESIGN ANALYSIS
Maximum Station Flow: 21.1 GPM
Flow Available at POC: 37.5 GPM
Residual Flow Available: 16.4 GPM

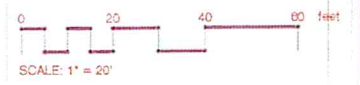
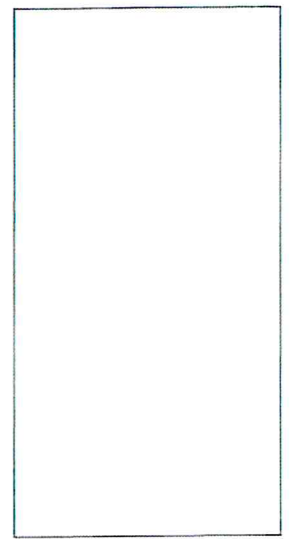
Critical Station:
Design Pressure: 5
Friction Loss: 30 PSI
Fittings Loss: 2.72 PSI
Elevation Loss: 0.27 PSI
Loss through Valve: 6.01 PSI
Pressure Req. at Critical Station: 39.0 PSI
Loss for Fittings: 0 PSI
Loss for Main Line: 2.39 PSI
Loss for POC to Valve Elevation: 0 PSI
Loss for Backflow: 4.3 PSI
Loss for Water Meter: 2.24 PSI
Critical Station Pressure at POC: 47.9 PSI
Pressure Available: 78 PSI
Residual Pressure Available: 30.1 PSI

**EXECUTIVE
DIRECTOR
APPROVAL**

2-14-24
Date

By

General Notes



Irrigation Notes
1.) This irrigation plan is for estimation and planning purposes only and is not to be taken as a guarantee.
2.) The irrigation system is designed assuming the PSI stated in the critical analysis to be available at the points of connection.
3.) The irrigation equipment and design are schematic in nature. The contractor is responsible for adjusting for conditions on site which may or may not be reflected in this plan (utilities, slopes, etc)

No. Revision/Issue Date

Firm Name and Address

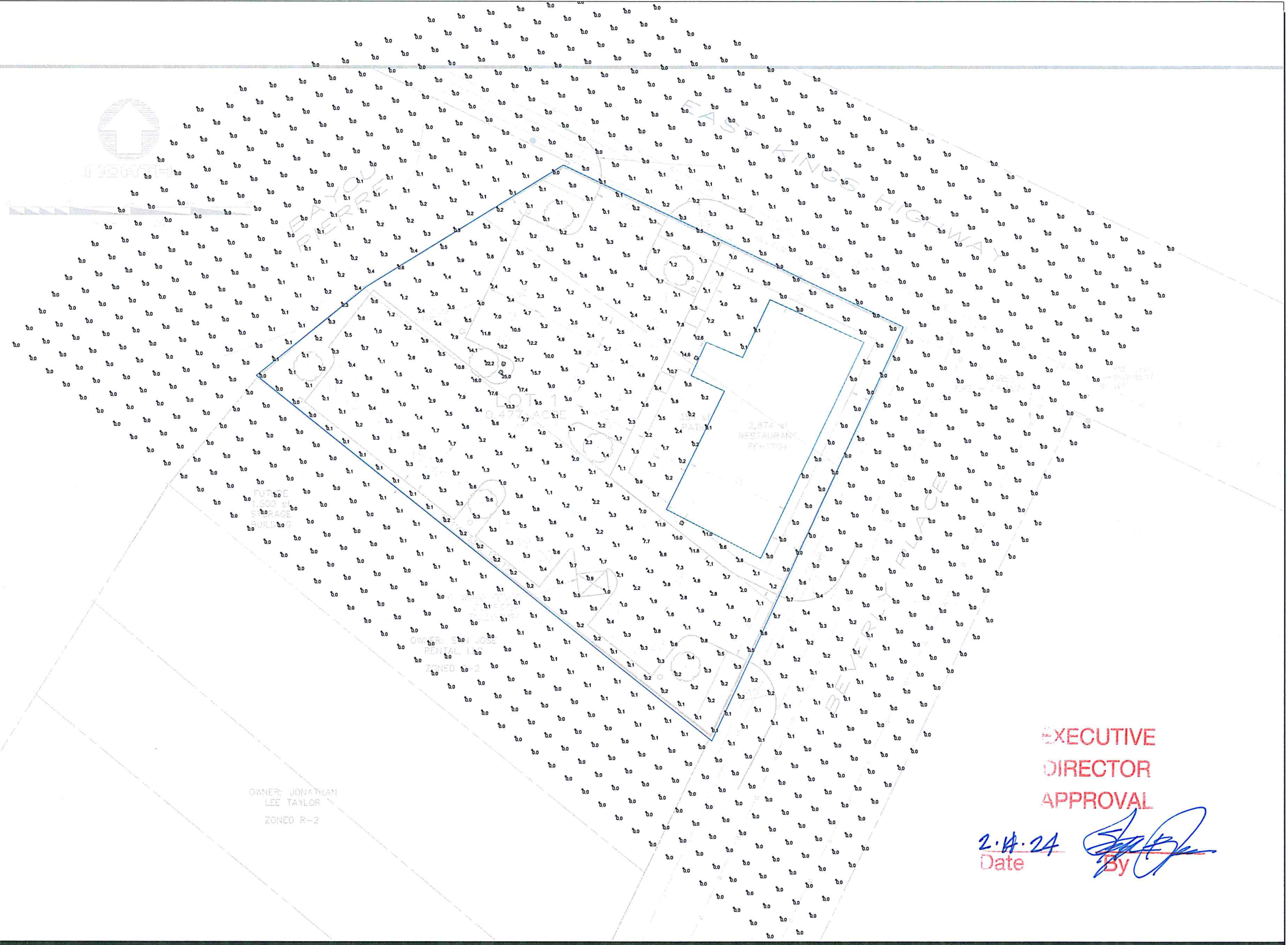
Project Name and Address
**El Compadre
Kings Highway
Shreveport, LA**

Project: El Compadre
Date: 1-30-2024
Scale: 1"=20'

Sheet: IR1



VICINITY MAP



OWNER: JONATHAN
LEE TAYLOR
ZONED R-2

EXECUTIVE
DIRECTOR
APPROVAL

2.14.24
Date By 

Luminaire Schedule					
Symbol	Qty	Label	Arrangement	LLF	Total Lamp Lumens
+	4	MLLG-AL-LED-SB-100-50-T3	Single	1.000	13675

Luminaire Location Summary					
Label	X	Y	Z	Orient	Tilt
MLLG-AL-LED-SB-100-50-T3	350	320	15	75.379	0
MLLG-AL-LED-SB-100-50-T3	350	319	15	232.431	0
MLLG-AL-LED-SB-100-50-T3	414.5	322.5	15	152.969	0
MLLG-AL-LED-SB-100-50-T3	409.367	269.534	15	242.488	0

Calculation Summary						
Label	Units	Avg	Max	Min	Avg/Min	Max/Min
Lot	Fc	0.69	25.0	0.0	N.A.	N.A.

100 Watt LED Shoebox Light | 14000 Lumens | 3000K | 4000K | 5000K | 100V-277V



Product Details

SKU: MLLG-AL-LED-SB-100-50 Web ID: 1749

100 Watt shoebox light - parking lot light produces 14000 lumens at 140 lumens/watt and replaces 250 Watt Metal Halide. It has durable die-cast aluminum housing. The standard optic is Type 3 - perfect for parking lots. There is an optional photocell that is also available. It comes with a 1-10V dimmable driver at 100V-277V or 277V-480V. High Voltage LED Driver in 5000K only.

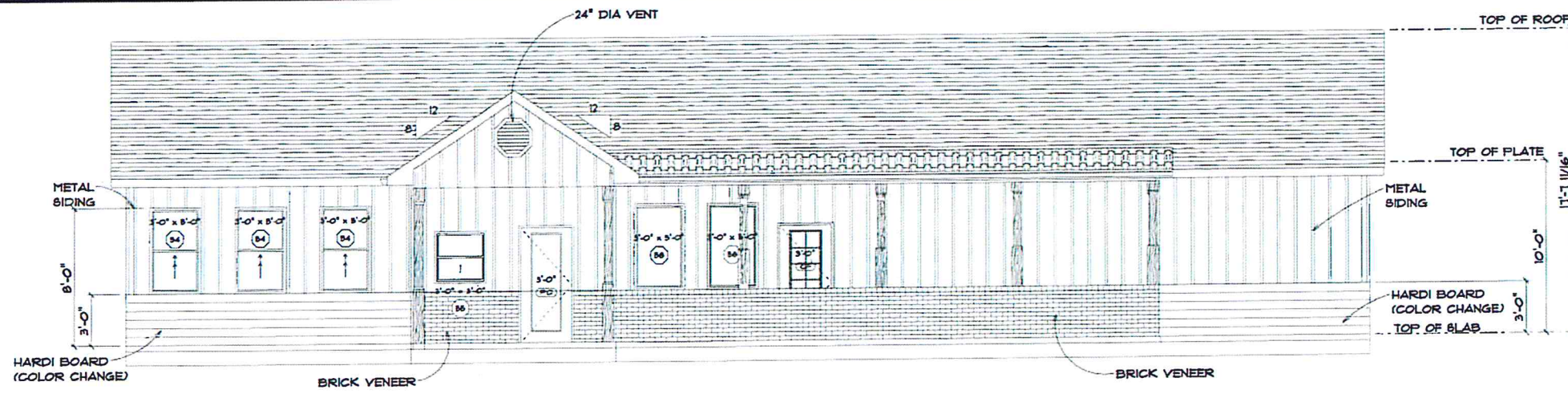
Color Temperature is either 3000K or 4000K or 5000K. The fixture comes in a dark BRONZE finish. This fixture can be pole post or wall mounted using the following brackets: Yoke or Arm or Slip Fitter or Trunnion. It is IP66 Wet location rated and can operate in temperatures ranging from -40 F to 122 F.

Product Specifications

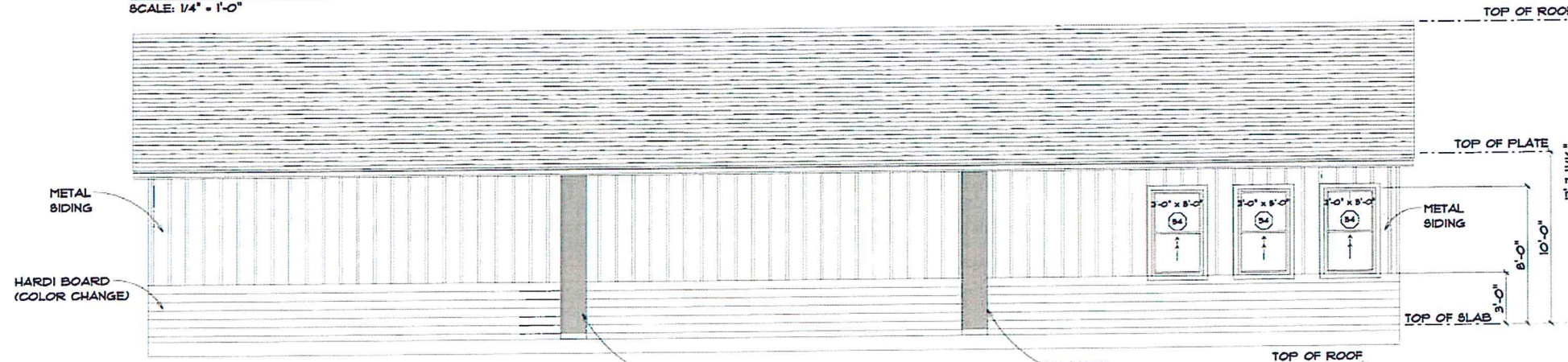
Watts:	100	Dimmable:	1-10V
Lumens:	14000	Beam Angle:	Type 3 Standard, Type 2,4,5 Optional
Lumens/Watt:	140	Optics:	Polycarbonate Lens
Replaces:	250 Watt Metal Halide	Frequency:	50-60Hz
Color Temp:	3000K 4000K 5000K	Power Factor:	.9
CRI:	80+	THD:	15%
IP Rating:	IP66	Housing:	Die-Cast Aluminum
Input Voltage:	100V-277V 277V-480V	Fixture Color:	Bronze
Surge Protection:	10 kV	Mounting:	Yoke Arm Slip Fitter Trunnion
Operating Temp:	-40°F to +122°F	EPA Rating:	.23 [ARM Mount]
Rated Life:	50,000 (L70) hours	Dimensions:	16 7/8 in X 11 7/8 in X 4 1/8 in
		Weight:	8.4 lbs
		Warranty:	5 years

EXECUTIVE
DIRECTOR
APPROVAL

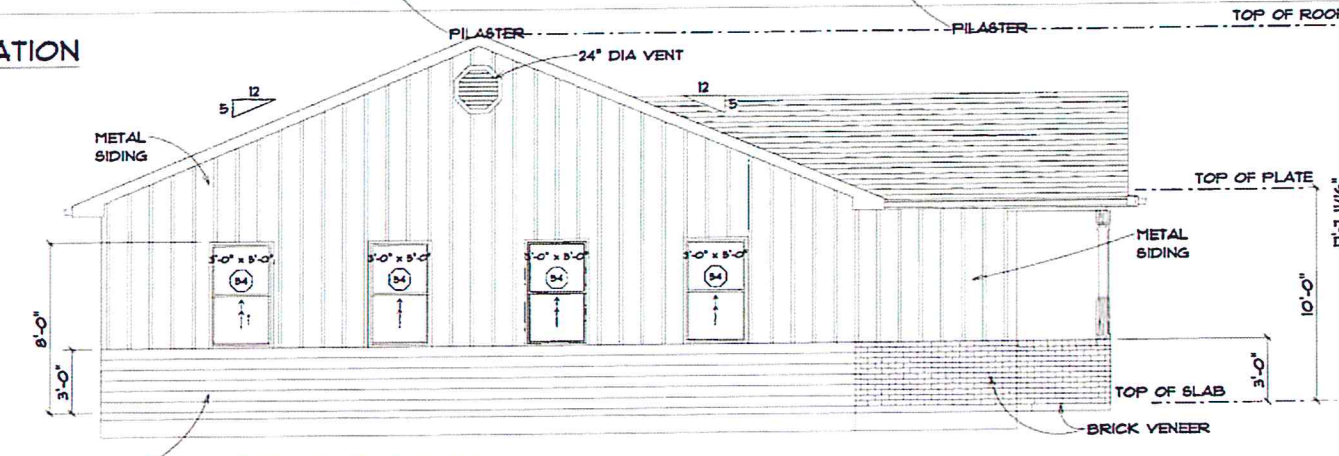
2.14.24
Date By



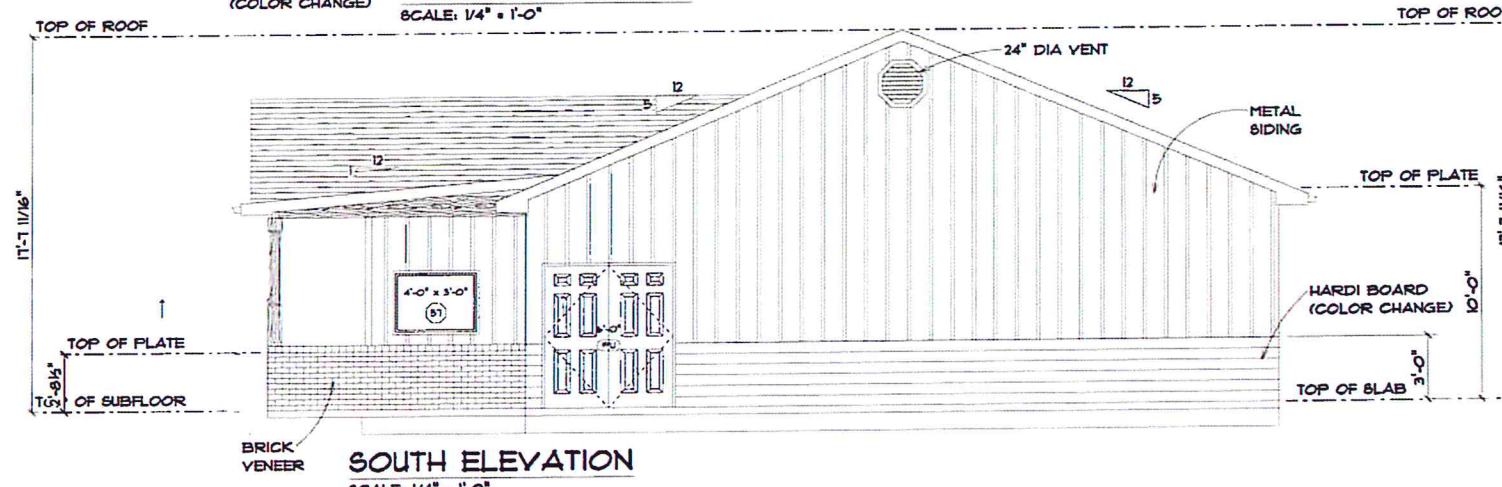
WEST ELEVATION
SCALE: 1/4" = 1'-0"



EAST ELEVATION
SCALE: 1/4" = 1'-0"



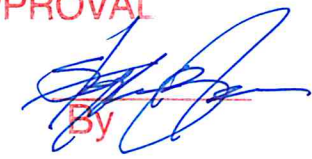
NORTH ELEVATION
SCALE: 1/4" = 1'-0"



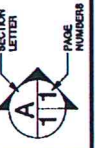
SOUTH ELEVATION
SCALE: 1/4" = 1'-0"

**EXECUTIVE
DIRECTOR
APPROVAL**

2.14.24
Date

By 

APPROVED: _____
CHECKED BY: _____



SCALE: 1/4" = 1'-0"
DRAWN BY: DONALD SMITH
DATE: Thursday, January 18, 2024

LOUISIANA URBAN DEVELOPMENT
DESIGN & DEVELOPMENT CONSULTANT
5331 SOUTH LAKEBORE DR
SHREVEPORT, LA 71103
PHONE: 337.956.3310 metalins@lud.com

El Compadre Mexican Restaurant
PHONE: _____
502 E Kings Hwy
Shreveport
Louisiana
OWNER: _____
71106