

0 5 10 15 20
SCALE: 1" = 10'

LEGEND:

- LANDSCAPED AREAS
- SOLID SOD
- PROPOSED CONCRETE PAVEMENT



RALEY AND ASSOCIATES, INC.
Civil & Structural Engineering, Surveying, Planning & Consulting

4913 Shied Road Bossier City, LA. 71111
Phone: 318-752-9023 - Fax: 318-752-9025
www.raleyandassociates.com

STATE OF LOUISIANA
REGINALD D. LEWIS
REG. No. 29426
REGISTERED PROFESSIONAL ENGINEER IN CIVIL ENGINEERING

EXECUTIVE DIRECTOR APPROVAL

5-3-19 Date

By: *[Signature]*

CONTRACT DATE: 10-01-18
BUILDING TYPE: EXPLORER LITE LG
PLAN VERSION: DEC. 2016
SITE NUMBER:
STORE NUMBER: 28270

TACO BELL
1911 NORTH MARKET
SHREVEPORT, LA. 71107

APPROVED:
EXECUTIVE DIRECTOR
SHREVEPORT MPC

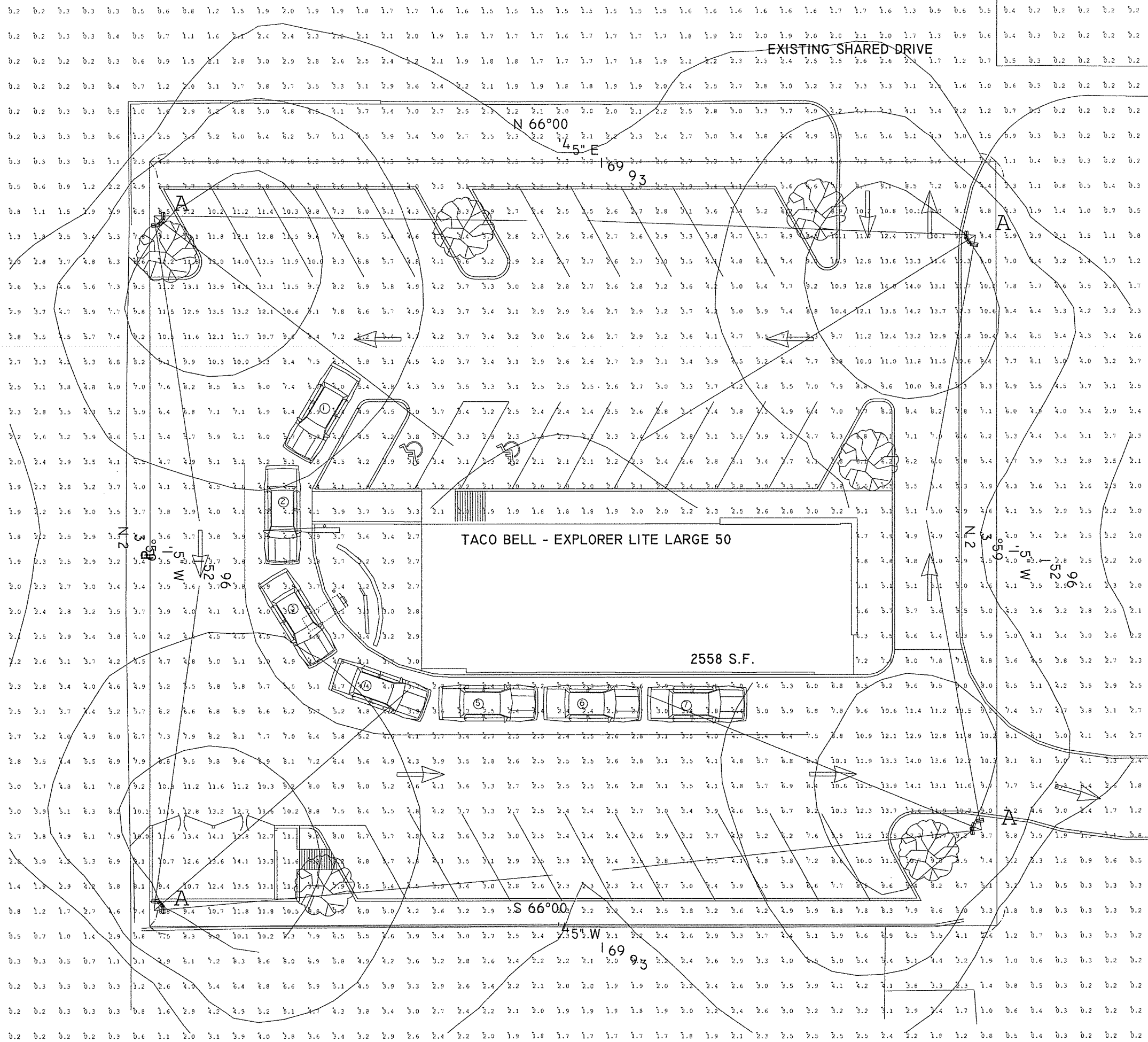
EXPLORER LITE
LARGES0

DIMENSIONED SITE PLAN

C3.0

PLOT DATE:

C-18-19



TACO BELL
 N. MARKET ST.
 SHREEVEPORT, LA
 PREPARED BY: JOHN BUJAKE
 ACCUSERV LIGHTING & EQUIPMENT
 877-707-7378
 jbujake@accu-serv.com
 JANUARY 21, 2019

Calculation Summary					
Label	Avg	Max	Min	Avg/Min	Max/Min
EXTENDED	4.40	14.2	0.2	22.00	71.00
PARKING LOT & DRIVE-THRU SURFACE	6.00	14.2	2.0	3.00	7.10

LIGHT LEVELS ARE MAINTAINED FOOT-CANDLES, INITIAL LEVELS ARE SLIGHTLY HIGHER

Luminaire Schedule							
Symbol	Qty	Label	Arrangement	Lum. Lumens	LLF	Lum. Watts	Description
—□	12	A	SINGLE	37593	0.900	307.5	EXISTING LF3-300 LED FLOOD LIGHT / EXISTING 30' POLE

FIXTURES ARE 300W 5000K LED FLOOD LIGHTS
 POLES ARE 30'-0" FOR AN OVERALL FIXTURE HEIGHT OF 32'-6" A.F.G.

C-18-19