

**EXECUTIVE
DIRECTOR
APPROVAL**

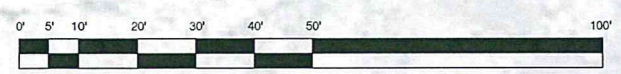
Date 5-6-19 By ACL

PLANT LEGEND

- ASIAN JASMINE PLANTED TO FILL WITHIN 6 MONTHS
- ALL UNPAVED AREAS WITH-IN THE PROPERTY BOUNDARIES ARE TO BE PLANTED WITH BERMUDA GRASS UNLESS OTHERWISE NOTED
- GARDENIA - 1 GAL
- AZALEA - 1 GAL
- INDIAN HAWTHORN(RAIN) - 3 GAL
- CAMILLIA - 1 GAL
- FLOWERING QUINCE - 1 GAL
- BALD CYPRESS - 3" CAL
- JAPANESE MAPEL - 3" CAL

* EXACT PLANT SPECIES, SPACING AND LOCATION TO BE SUBMITTED BY LANDSCAPING SUBCONTRACTOR DURING CONSTRUCTION SUBMITTALS PROCESS

** PROVIDE IRRIGATION FOR ALL LANDSCAPING SHOWN IN THIS CONTRACT



A1 SITE PLAN
SCALE: 1/16" = 1'-0"

STATE FARM OFFICE BUILDING
WITH TENANT SPACE
400 BLOCK OF E. BERT KOUNS -
INDUSTRIAL LOOP
SHREVEPORT, LA 71106

SITE PLAN

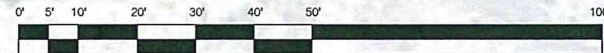
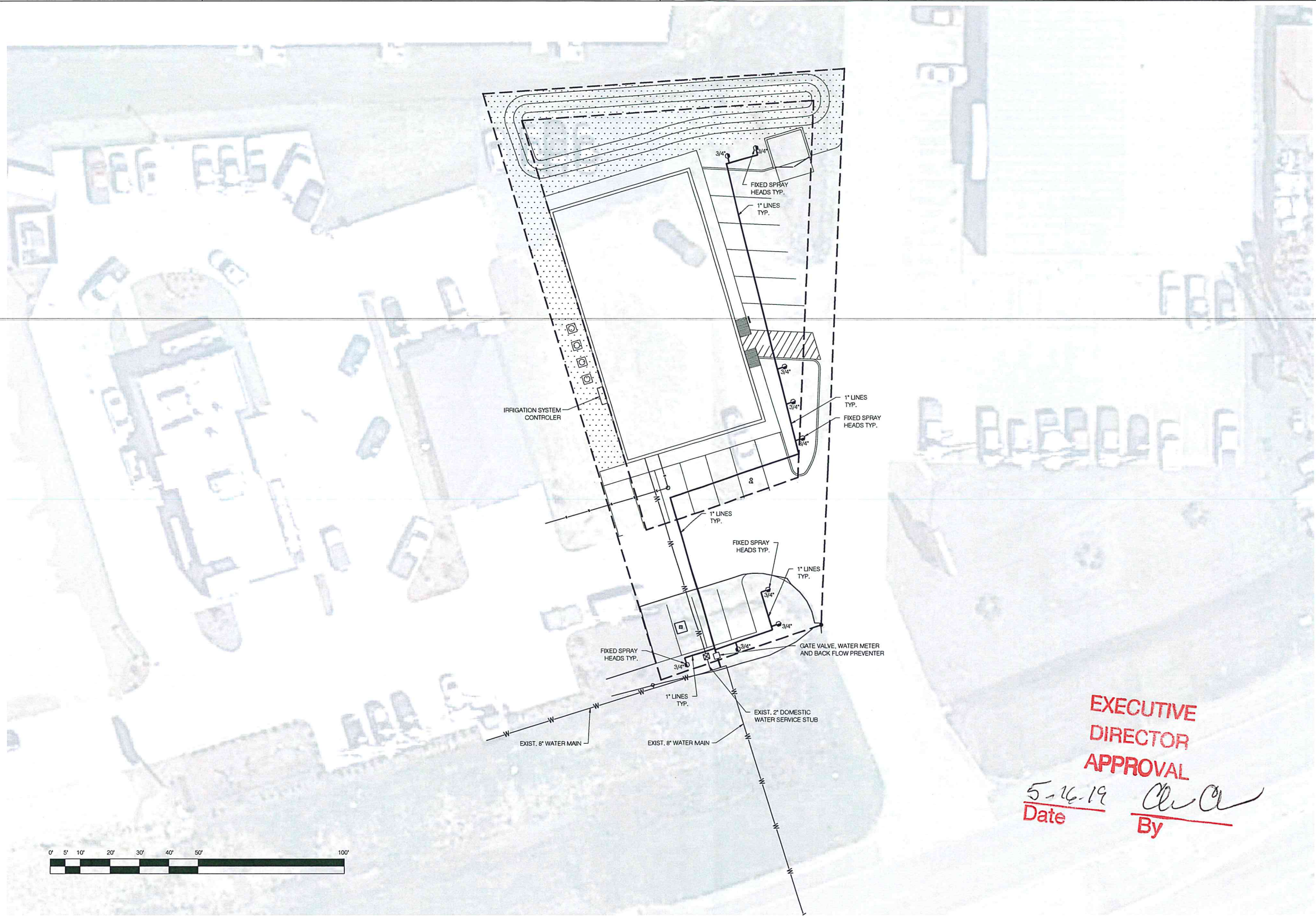
0.406 ACS. LOT 2, PARCEL ID #
161306-068-0002
SHREVEPORT, CADDO PARISH
LOUISIANA

REVISIONS		PROJECT NO.
NO.	DATE	AA 1829
1	XX.XX.XX	
SHEET		MPC-1

EXECUTIVE DIRECTOR _____ DATE _____

DATE 04.22.19

C-14-19



A1 IRRIGATION PLAN
SCALE: 1/16" = 1'-0"

EXECUTIVE DIRECTOR APPROVAL
Date 5-16-19 By AA

Abrams
Architecture and Design

STATE FARM OFFICE BUILDING
WITH TENANT SPACE
400 BLOCK OF E. BERT KOUNS -
INDUSTRIAL LOOP
SHREVEPORT, LA 71106

COPYRIGHT
THESE DOCUMENTS ARE PROTECTED BY UNITED STATES
COPYRIGHT LAW. THEY HAVE BEEN PREPARED SPECIFICALLY
FOR THE PROJECT IDENTIFIED AND ARE NOT SUITABLE FOR
USE ON ANY OTHER PROJECT OR AT ANY OTHER LOCATION
WITHOUT THE EXPRESS WRITTEN APPROVAL AND
PARTICIPATION OF ABRAMS ARCHITECTURE AND DESIGN.
REPRODUCTION OF THESE DOCUMENTS MUST BE AUTHORIZED
BY THE ARCHITECT. ALL RIGHTS ARE RESERVED TO ABRAMS
ARCHITECTURE AND DESIGN.

IRRIGATION PLAN

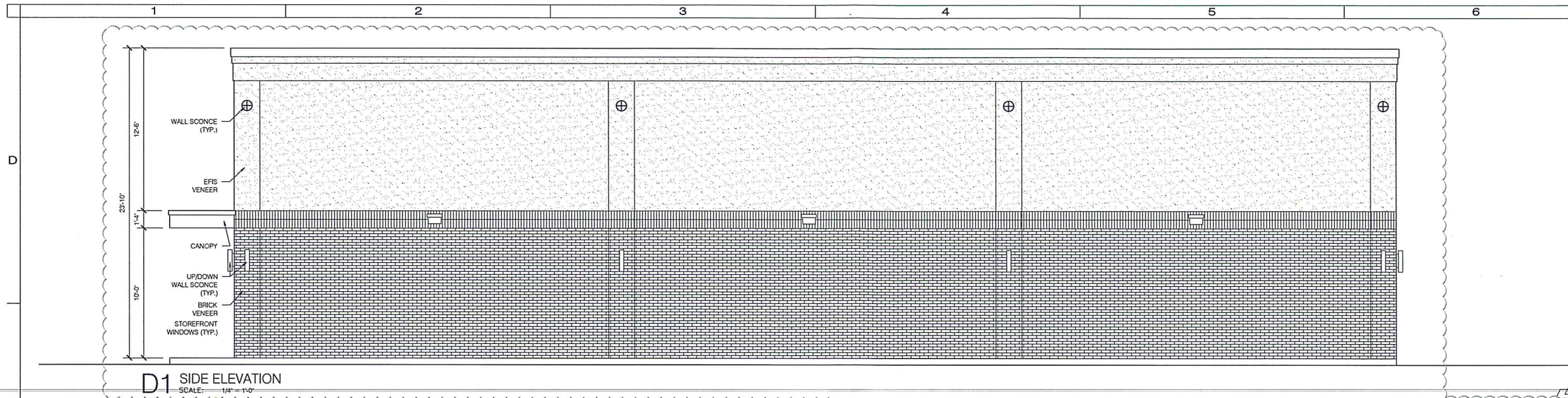
0.406 ACS. LOT 2, PARCEL ID #
161306-068-0002
SHREVEPORT, CADDO PARISH
LOUISIANA

REVISIONS	PROJECT NO.
NO. DATE	AA 1829
1 XXXXX	SHEET
	IR-1

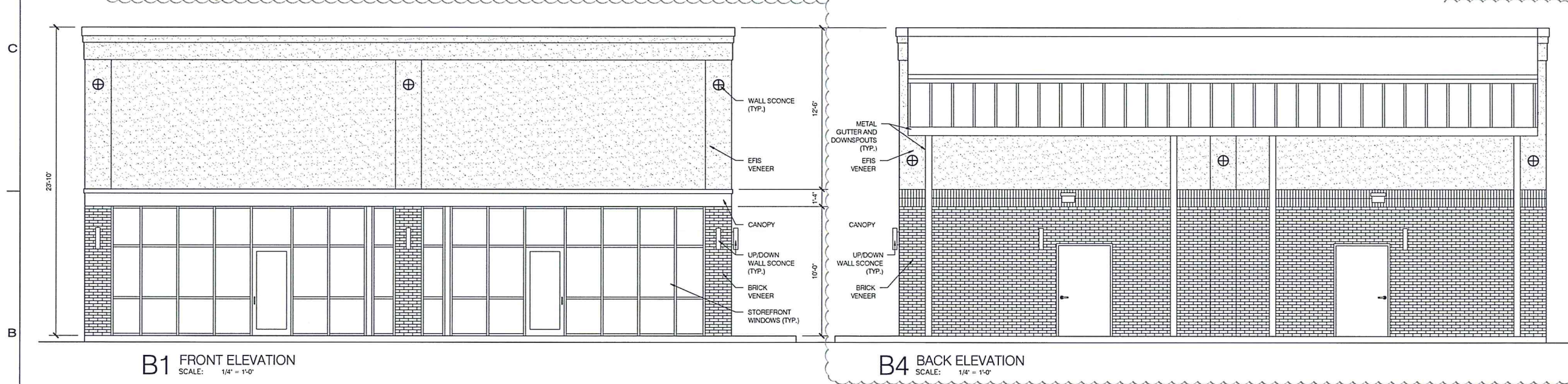
EXECUTIVE DIRECTOR _____ DATE _____

DATE 04.22.19

C-14-19

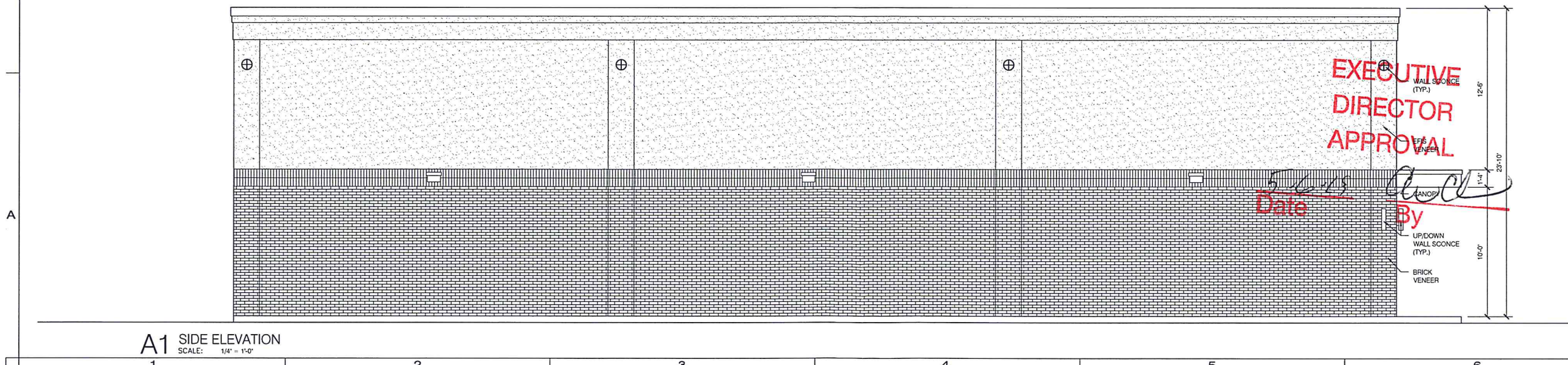


D1 SIDE ELEVATION
SCALE: 1/4" = 1'-0"



B1 FRONT ELEVATION
SCALE: 1/4" = 1'-0"

B4 BACK ELEVATION
SCALE: 1/4" = 1'-0"



A1 SIDE ELEVATION
SCALE: 1/4" = 1'-0"

**EXECUTIVE
DIRECTOR
APPROVAL**
[Signature]
Date _____
By _____

Abrams
Architecture and Design

STATE FARM
OFFICE BUILDING
400 BLOCK EAST BURT
KOUNS INDUSTRIAL LOOP
SHREVEPORT, LA 71106



COPYRIGHT
THESE DOCUMENTS ARE PROTECTED BY UNITED STATES
COPYRIGHT LAW. THEY HAVE BEEN PREPARED SPECIFICALLY
FOR THE PROJECT IDENTIFIED AND ARE NOT SUITABLE FOR
USE ON ANY OTHER PROJECT OR AT ANY OTHER LOCATION
WITHOUT THE EXPRESS WRITTEN APPROVAL AND
PARTICIPATION OF ABRAMS ARCHITECTURE AND DESIGN.
REPRODUCTION OF THESE DOCUMENTS MUST BE AUTHORIZED
BY THE ARCHITECT. ALL RIGHTS ARE RESERVED TO ABRAMS
ARCHITECTURE AND DESIGN.

EXTERIOR
ELEVATIONS

REVISIONS	PROJECT NO.
NO. DATE	AA 1829
1 03.15.18	SHEET
	A3.01

DATE 03.01.19

C-14-19