

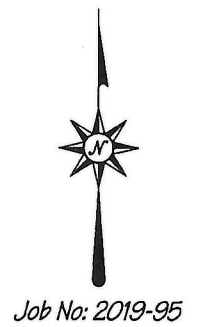
Site Plan

Proposed Dixie Gardens Unit 3-A
 Showing Existing Improvements
 Proposed Parking Plan
 Proposed Landscaping Plan
 September 12, 2019 Scale: 1" = 20'

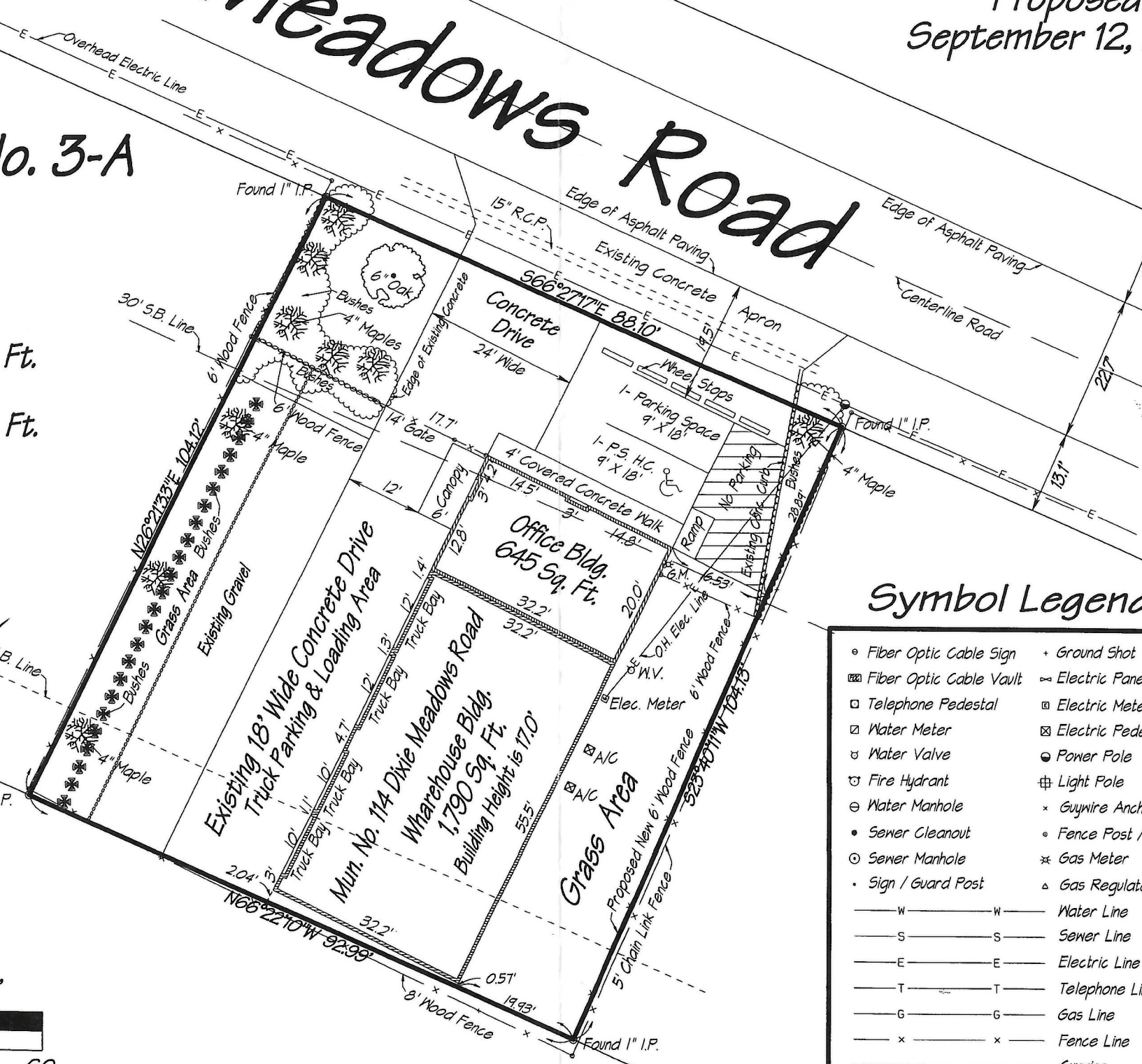
Proposed Lot 1 Dixie Gardens Unit No. 3-A

Total Lot Acreage
 0.216 Acres
 9,422 Sq. Ft.

Total Building Area 2,435 Sq. Ft.
 Office Portion 645 Sq. Ft.
 Warehouse Portion 1,790 Sq. Ft.



Dixie Meadows Road



Symbol Legend

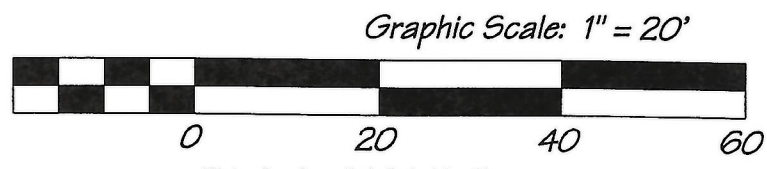
○ Fiber Optic Cable Sign	+ Ground Shot
⊠ Fiber Optic Cable Vault	⊠ Electric Panel
□ Telephone Pedestal	⊠ Electric Meter
⊠ Water Meter	⊠ Electric Pedestal
⊠ Water Valve	⊠ Power Pole
⊠ Fire Hydrant	⊠ Light Pole
⊠ Water Manhole	× Guywire Anchor
● Sewer Cleanout	○ Fence Post / Gate
⊠ Sewer Manhole	⊠ Gas Meter
• Sign / Guard Post	△ Gas Regulator
—W—W— Water Line	
—S—S— Sewer Line	
—E—E— Electric Line	
—T—T— Telephone Line	
—G—G— Gas Line	
—x—x— Fence Line	
----- Guywire	

Existing Office & Warehouse Building
 114 Dixie Meadows Road
 Shreveport, Louisiana 71105

Property Owner:
 Goebel Quality Services, LLC
 5927 Dixie Garden Drive
 Shreveport, Louisiana 71105
 Contact: Keith Sutton
 318-525-2633

John R. Bowman & Assoc., Inc.
 3833 Southern Avenue
 Shreveport, Louisiana 71106
 Phone 318-865-9540
 Prepared by: Michael P. Bowman, P.L.S.
 August 20, 2019
 Revised: September 12, 2019

MPC APPROVED
 10/2/19
 Date By *J.P.M.*



Dixie Gardens Unit 3-A Site Plan.pro