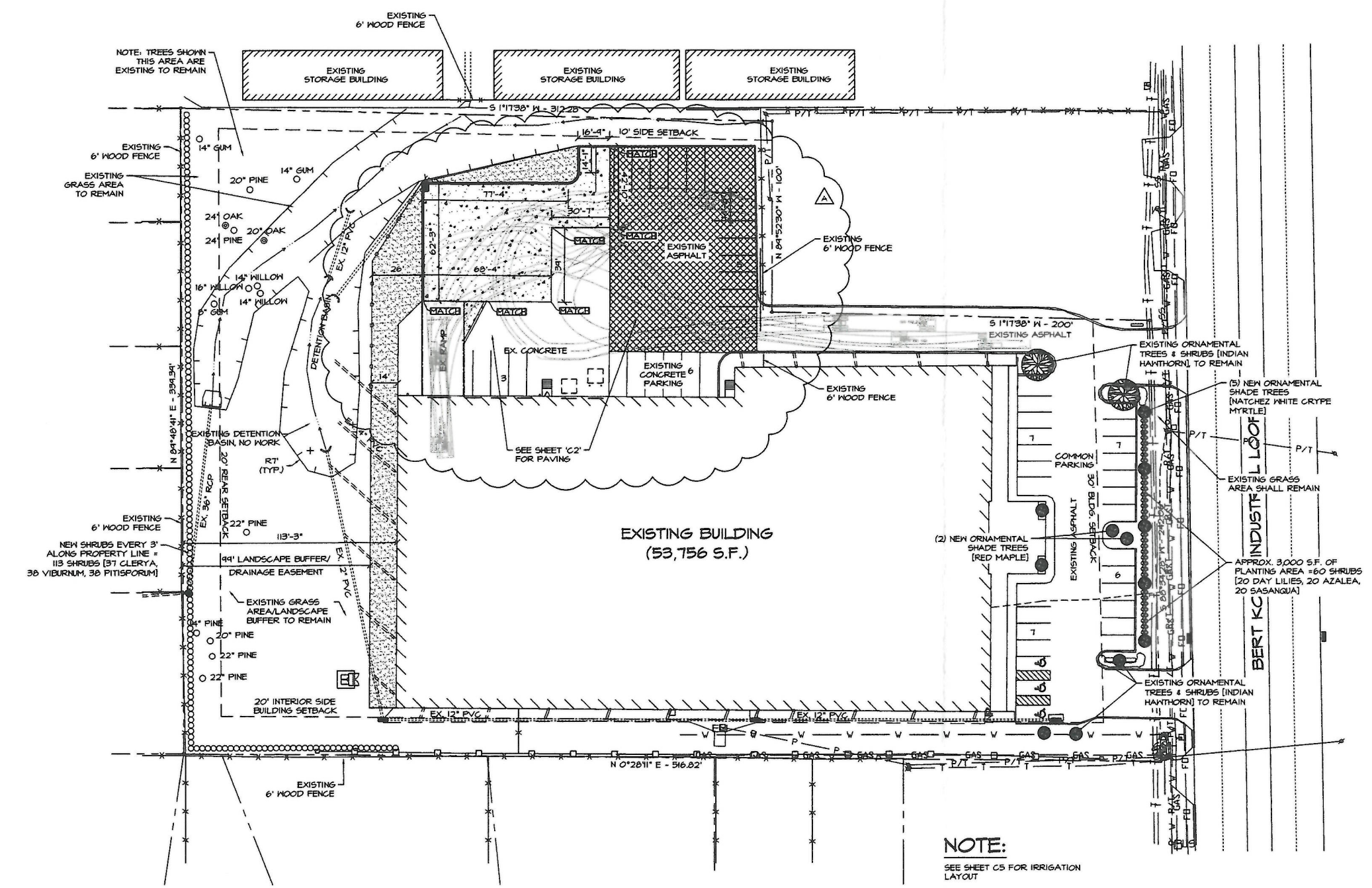


PRELIMINARY	
REVIEW	
BIDDING	
PERMIT	
CONSTRUCTION	X
DATE:	10-21-2019
SET #	

**Proposed Glass Company
 Crossroads**
 2940 W. BERT KOUNS INDUSTRIAL LOOP EXPRESSWAY
 SHREVEPORT, LA 71118

SITE PLAN

PROJECT #	1468	DATE:	10-21-2019
DRAWN BY:	SGB	REVISION:	A
CHECKED BY:	SGB		
DRAWN BY:	SGB		
CHECKED BY:	SGB		
CIVIL PLAN #			
ARCH PLAN #			
SHEET	C1		



NOTE:
 SEE SHEET C5 FOR IRRIGATION LAYOUT

**EXECUTIVE
 DIRECTOR
 APPROVAL**

10/30/19
 Date by *[Signature]*

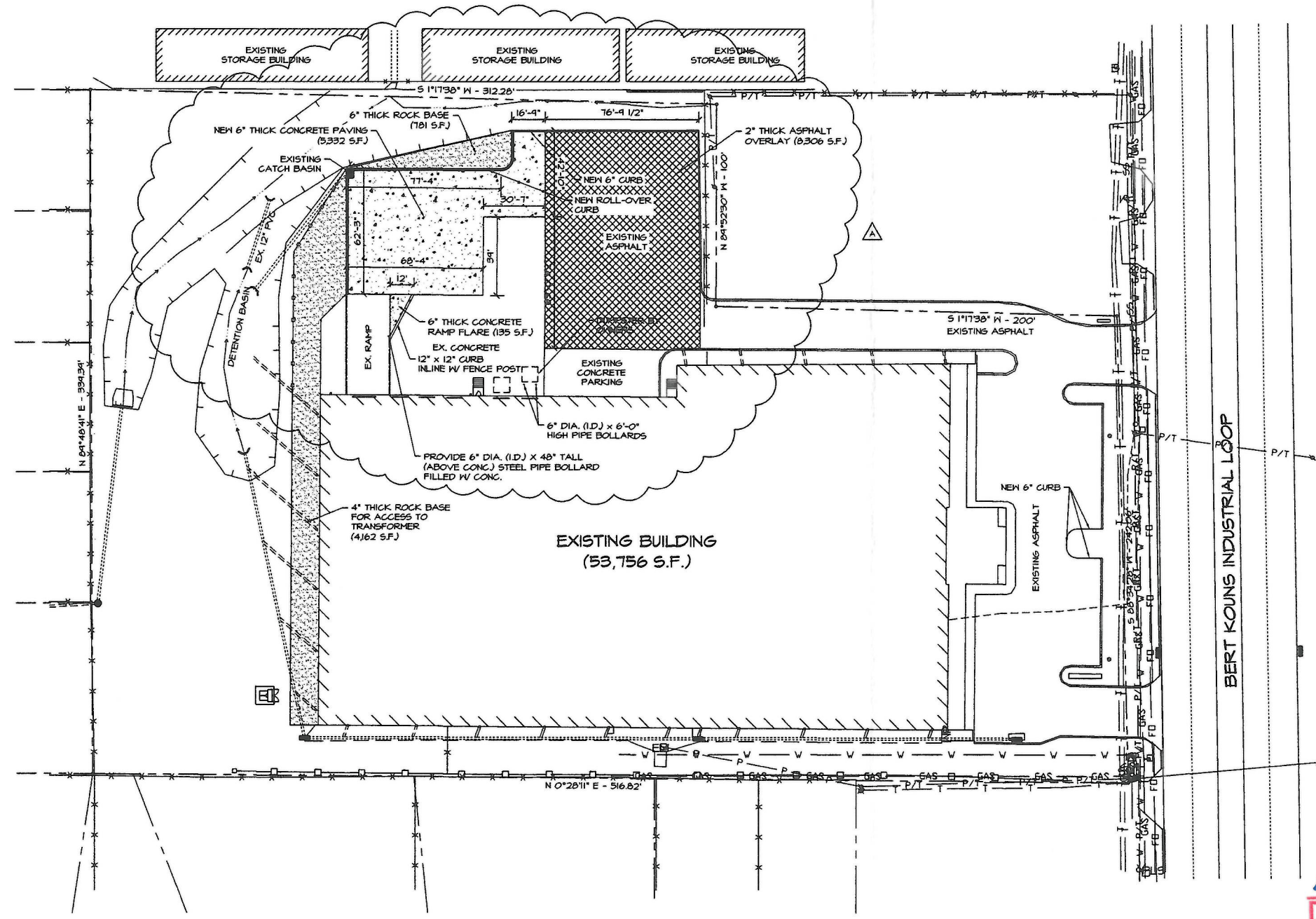
PRELIMINARY	
REVIEW	
BIDDING	
PERMIT	
CONSTRUCTION	X
DATE:	10-21-2019
SET #	

**Proposed Glass Company
 Crossroads**
 2940 W. BERT KOUNS INDUSTRIAL LOOP EXPRESSWAY
 SHREVEPORT, LA. 71118

SITE PAVING PLAN

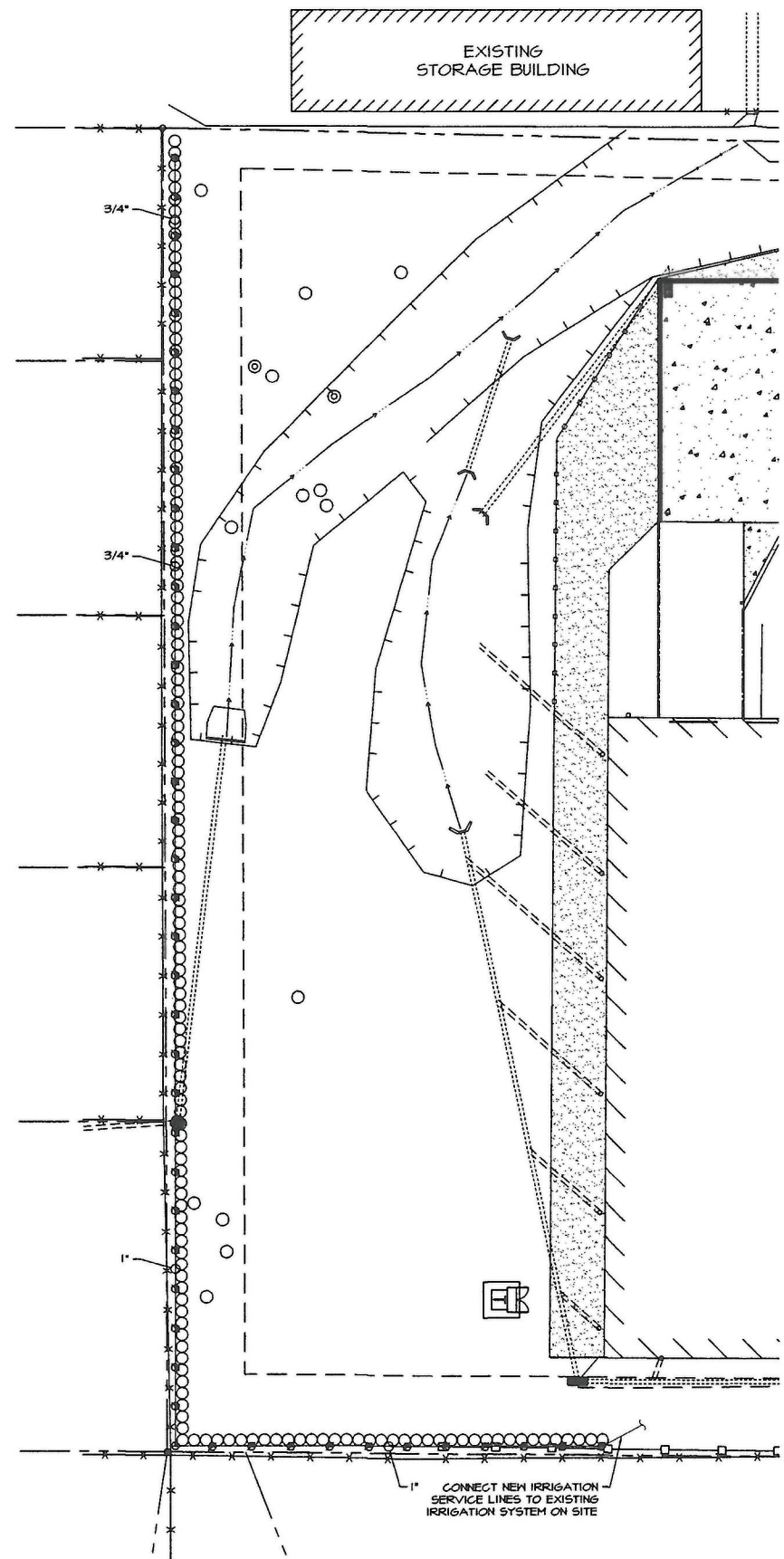
PROJECT #	19168	REVISION	A	DATE	10-20-2019
DRAWN BY:	SGB				
CHECKED BY:	SGB				
DRAWN BY:	SGB				
CHECKED BY:	SGB				
CIVIL PLAN					
ARCH PLAN					
SHEET					

C2



EXECUTIVE DIRECTOR APPROVAL

Date 10/30/19 By [Signature]



IRRIGATION LEGEND

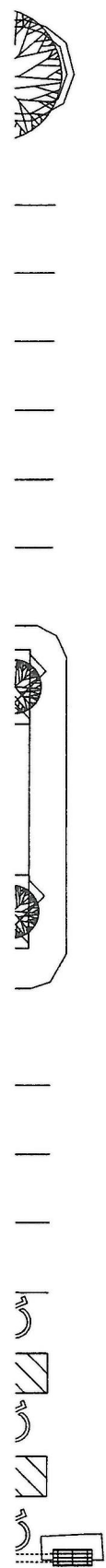
- ⊙ RAINBIRD POP-UP LOW ANGLE SHRUB SPRAY MPR SERIES NO. 5 FULL, HALF, & QUARTER ON A 1812-SAM-PRS BODY.
- RAINBIRD POP-UP LOW ANGLE SHRUB SPRAY MPR SERIES NO. 10 FULL, HALF, & QUARTER ON A 1812-SAM-PRS BODY.

IRRIGATION NOTES

1. LINE LAYOUT IS DIASRAMATIC-ADJUST HEAD AND LINE LOCATIONS ON SITE TO ACCOMMODATE EXISTING JOB CONDITIONS AND TO ACHIEVE COMPLETE COVERAGE.
2. ALL MAIN LINE PIPING SHALL BE BURIED TO HAVE A MINIMUM COVER OF 18". ALL LATERAL PIPING DOWNSTREAM OF THE MAIN LINE SHALL BURIED TO HAVE A MINIMUM COVER OF 12".
3. ALL MAINS ARE TO DRAIN TO LOW POINTS AT A MINIMUM ONE HALF (1/2%) PERCENT SLOPE. AT LOW POINTS, INSTALL GATE VALVE TO FACILITATE DRAINAGE OF SYSTEM DURING FREEZING TEMPERATURES.
4. CONTRACTOR SHALL INSTALL AUTOMATIC DRAIN VALVES AT LOW POINTS IN THE IRRIGATION LINES AS REQUIRED TO PREVENT FREEZE DAMAGE.
5. ALL VALVE BOXES SHALL BE BLACK IN COLOR (BODY AND LID). SIZES SHALL BE TEN (10") INCHES BY FOURTEEN (14") INCHES (RECTANGULAR) FOR REMOTE CONTROL VALVES AND NINE (9") INCHES (ROUND) FOR GATE AND QUICK COUPLER VALVES.
7. CONTRACTOR SHALL MAKE MINOR ADJUSTMENTS TO SYSTEM LAYOUT IN FIELD TO INSURE POSITIVE DRAINAGE OF LATERAL LINES AND MAIN LINES.
8. CONTRACTOR SHALL NOTIFY THE LANDSCAPE ARCHITECT, IF THE STATIC PRESSURE IS LESS THAN THE DESIGN STATIC PRESSURE OF 65 PSI. PRESSURE REGULATION AT THE SOURCE SHALL BE REQUIRED IF PRESSURE IS GREATER THAN 15 PSI.
9. ALL WIRING FROM THE IRRIGATION CONTROLLER TO THE REMOTE CONTROL VALVES SHALL BE UF-14/1 DIRECT BURIAL CABLE. ALL WIRE SPLICES SHALL BE MADE IN VALVE BOXES ONLY USING RAINBIRD SNAP-TITE CONNECTORS AND SEALANT. PROVIDE SLEEVES FOR WIRE UNDER PAVED AREAS AS REQUIRED.
10. ALL IRRIGATION INSTALLATION SHALL CONFORM TO THE LOCAL CODES AND REGULATIONS.
11. IRRIGATION SYSTEM SHALL BE INSTALLED AND FULLY OPERATIONAL BEFORE LANDSCAPING INSTALLATION.
12. IRRIGATION HEADS SHALL BE PLACED AND ADJUSTED SO AS NOT TO SPRAY ON THE BUILDING.
13. IRRIGATION HEADS SHALL BE PLACED AND SIZED SO AS NOT TO BE SUSCEPTIBLE TO DAMAGE BY AUTOMOBILE OVERHANGS.
14. IRRIGATION CONTRACTOR SHALL PLACE ADJUSTABLE ARC NOZZLES IN PLACE OF FIXED ARC NOZZLE AS NEEDED TO ELIMINATE OVERSPRAY ON TO PAVEMENT.
15. TECHLINE SHALL BE BURIED UNDER MULCH.

**EXECUTIVE
DIRECTOR
APPROVAL**

Date: 10/30/19 By: *[Signature]*



PARTIAL LANDSCAPING IRRIGATION PLAN (2)
SCALE: 1"=10'-0"

PRELIMINARY	
REVIEW	
BIDDING	
PERMIT	
CONSTRUCTION	X
DATE	10-21-2019
SET #	

**Proposed Glass Company
Crossroads**
2440 W. BERT KOUNS INDUSTRIAL LOOP EXPRESSWAY
SHREVEPORT, LA 71118

SITE LANDSCAPING IRRIGATION PLAN

PROJECT #	1968	DATE:	
DRAWN BY:	SGB	REVISION:	
CHECKED BY:			
DRAWN BY:	SGB		
CHECKED BY:			
CIVIL PLAN #			
ARCH PLAN #			
SHEET			

C5



PARTIAL LANDSCAPING IRRIGATION PLAN (1)
SCALE: 1"=20'-0"