

**EXECUTIVE
DIRECTOR
APPROVAL**

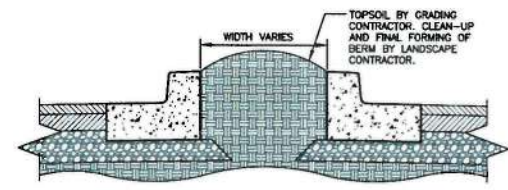
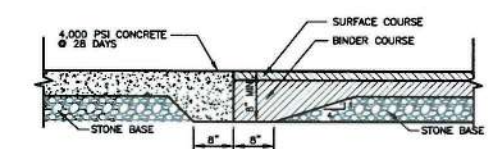
11-4-19 *Ar Chd*
Date By

- Parking and Paving Notes**
- All signs, pavement markings, and other traffic control devices shall conform to the FHWA manual on uniform traffic control devices, and handicapped signing shall meet Louisiana disabled parking regulations.
 - All pavement markings shall be four (4) inches wide solid white unless indicated otherwise on the drawings. All handicap parking stalls to be blue striping.
 - A minimum clearance of two feet shall be maintained between the face of curb and any part of a sign or light pole. HC signs in sidewalk shall have 3' min. clearance for HC accessibility.
 - Contractor shall furnish and install all pavement markings as shown on the plans.
 - Contractor shall coordinate installation of all signs, pavement markings, and other traffic control devices with other contractors on site.
 - Contractor shall saw-out to provide smooth transitions at tie-ins to existing edges of pavement.
 - Joints or score marks are to be sharp and clean without showing edges of jointing tool.
 - All concrete for curbs, sidewalks & pavement shall be class a 4000 p.s.i. Items on City/County row shall be 4000 p.s.i. unless otherwise noted.
 - Contractor shall saw-out tie-ins at existing curbs as necessary to ensure smooth transitions. Contractor shall saw-out and transition to meet existing pavement as necessary and as directed by inspector to insure positive drainage. (typical @ all intersections)
 - Contractor shall comply with all pertinent provisions of the "Manual of Accident Prevention in Construction" issued by AGC of America, Inc., and the Safety and Health Regulations for Construction issued by the U.S. Department of labor.
 - Contractor shall be responsible for cost of pavement replacement where utility lines are extended from existing lines to the building.
 - All ramps constructed are not to exceed a slope of 1:12. Accessible parking and loading zone areas are not to exceed 2%. Cross slope along accessible routes shall not exceed 2%.
 - Concrete dumpster pads to be flush with pavement unless otherwise noted.
 - All dimensions are to face of curb unless indicated otherwise.
 - All work shall comply with all applicable codes, regulations, and/or local standards imposed by local utility, county, and state.
 - Necessary barricades, sufficient lights, signs and other traffic control methods as may be necessary for the protection and safety of the public shall be provided and maintained throughout the construction of driveways connecting to all roadways. Contractor to provide traffic control plan to the Owner and City for approval if required.
 - These plans are not to be used for building layout. See Architectural Plans to layout building.

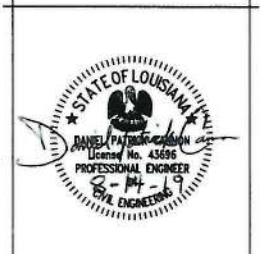
FEDERAL FLOOD NOTE:
This property is located in Flood Zone X (area of reduced flood risk due to levee) per the flood insurance rate map, map no. 22017C0487H, having an effective date of May 19, 2014.

PLANS LEGEND:

	LIGHT DUTY ASPHALT
	HEAVY DUTY ASPHALT
	CONCRETE
	LANDSCAPE AREAS (SEE LANDSCAPE PLANS FOR DETAILS)
	CURB AND GUTTER
	PROPERTY LINE
	EXISTING EASEMENT
	LIGHT POLES (See site electrical plans for details)
	6' TALL PRIVACY FENCE (SEE ARCHITECTURAL PLANS FOR DETAILS)



UPDATED LIGHT POLE LOCATIONS PER UTILITY COMPANY COMMENTS - REVISION #1



Civil Engineer:
DANIEL PATRICK CANNON, P.E.
915 CREEKSIDE ROAD
CHATTANOOGA, TN 37406
423-698-2661

A NEW LOCATION FOR
CAPTAIN D'S
7798 YOUREE DRIVE
SHREVEPORT, LA 71105
**TRIDENT HOLDINGS, LLC
& INVEST SQUARED, LLC**



Job Number: 19082
Revisions:
REVISION #1 10/25/19

SITE PLAN
C-2



IT IS THE CONTRACTORS RESPONSIBILITY TO CONTACT UTILITY COMPANIES PRIOR TO ANY CONSTRUCTION AS THE LOCATION OF UTILITIES SHOWN ON THESE PLANS ARE APPROXIMATE AND POSSIBLY INCOMPLETE. THEREFORE CERTIFICATION TO THE LOCATION OF ALL UNDERGROUND UTILITIES IS WITHHELD.

19-433-C

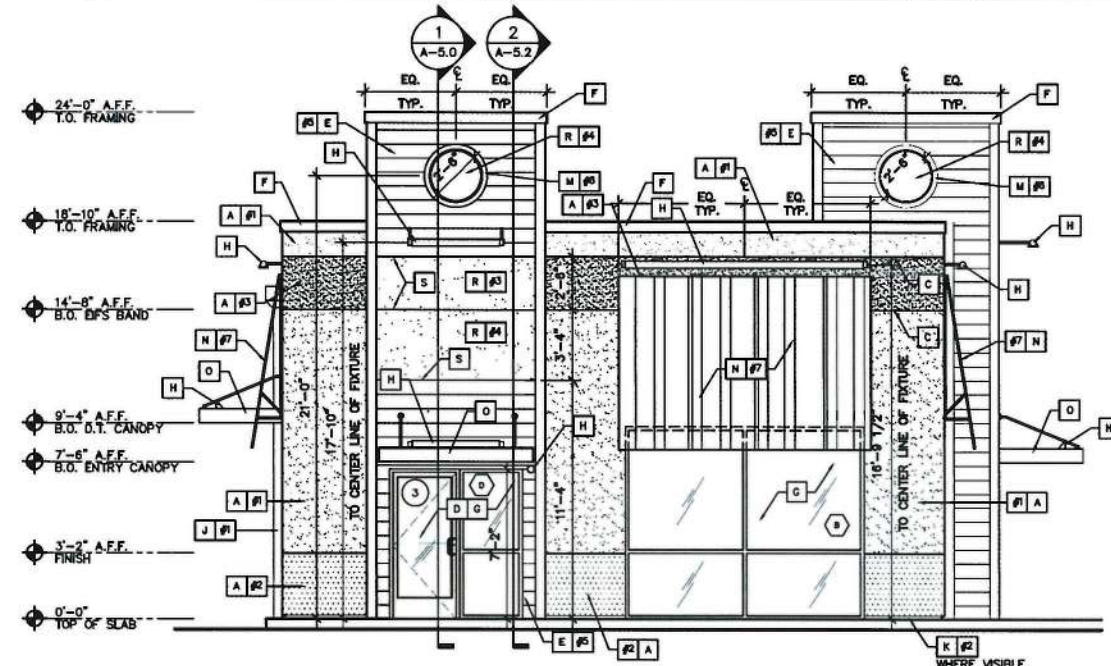
SYMBOL	MATERIAL	DESCRIPTION	REMARKS
A	E.I.F.S.	E.I.F.S. AS MANUFACTURED BY DRYVIT SYSTEMS, INC. PROVIDE "OUTSULATION RING SYSTEM". THE SYSTEM CONFIGURATION SHALL BE TYPE 1 WITH BACKSTOP NT AND DRAINAGE MAT. SYSTEM TO BE 1" THICKNESS. PROVIDE WITH DRAINAGE TRACK OPTION. STANDARD FINISH & COLOR AS INDICATED ON DRAWINGS. ACCEPTABLE E.I.F.S. MANUFACTURERS INCLUDE STO, PAREX, & BASF - IF ALTERNATE MANUFACTURER IS PREFERRED, PROVIDE SUBMITTAL & COLOR SELECTION TO CAPTAIN D'S REP. FOR REVIEW & APPROVAL. CONTROL JOINTS PER MANUFACTURER'S SPECIFICATIONS.	INSTALLATION PER MANUFACTURER SPECS.
B	CORONADO STONE VENEER	CHISELED STONE SILL --- LEDGESTONE, CORONADO HONEY LEDGE - GOLDEN HARVEST	INSTALLATION PER MANUFACTURER SPECS.
C	E.I.F.S. REVEAL	USE MANUFACTURER'S STANDARD REVEAL DETAIL. SEE DETAIL 11/AS.1	INSTALLATION PER MANUFACTURER SPECS.
D	STOREFRONT DOOR	KAWNEER-SYSTEM; 190 SWING DOOR, FINISH: ALUMINUM, CLASS 1 CLEAR ANODIZED. NON-INSULATED AT DOORS. 1/4" GLASS PANES-COLOR: CLEAR, TEMPERED. ACCEPTABLE ALTERNATE MANUFACTURERS INCLUDE YKK AP, TUBELITE OR CORAL.	INSTALLATION PER MANUFACTURER SPECS.

SYMBOL	MATERIAL	DESCRIPTION	REMARKS
E	HARDIPLANK SELECT CEDARMILL	SELECT CEDARMILL --- SIZE: 9.25 IN.	INSTALLATION PER MAN. SPECS.
F	PARAPET WALL CAP	GALVANIZED STEEL CAP FLASHING. REFERENCE WALL SECTIONS, SHEETS AS.O. FOR DETAILS AND WALL SECTIONS, PREP AND PAINT - COLOR: ALUMINUM (TO MATCH CLEAR ANODIZED STOREFRONT SYSTEM).	INSTALLATION PER SMACNA
G	STOREFRONT WINDOWS	KAWNEER-SYSTEM; TRIFAB II 451. FINISH: ALUMINUM, CLASS 1 CLEAR ANODIZED, 1" INSULATED, TEMPERED. ACCEPTABLE ALTERNATE MANUFACTURERS INCLUDE YKK AP, TUBELITE OR CORAL. SOLARBAN 60 OR EQUIVALENT ON #2 SURFACE.	INSTALLATION PER MANUFACTURER SPECS.
H	EXTERIOR LIGHTING	SEE ELECTRICAL - FOR LINEAR SIGN LIGHTERS, USE TREADED NIPPLE FITTINGS - BOTH ENDS - LIGHTS ABOVE AWNINGS TO RECEIVE 9" FITTING. TOWER LIGHTS TO RECEIVE 18" FITTING - RUN ELECTRICAL CONNECTION AT ONE END.	TOWER CANOPY HAS PREINSTALLED TOP SURFACE MOUNTED SIGN LIGHTER FIXTURE CONTAINING WHP FOR ELECTRICAL CONNECTION
J	SEAMLESS DOWNSPOUT	PRE-FINISHED ALUMINUM, COLOR TO MATCH SHERWIN WILLIAM-SW 6651 CHERISH CREAM (CREAM/WHITE)	REFER 12/A-9 & A-6 FOR ADDIT. INFO & LOCATION.

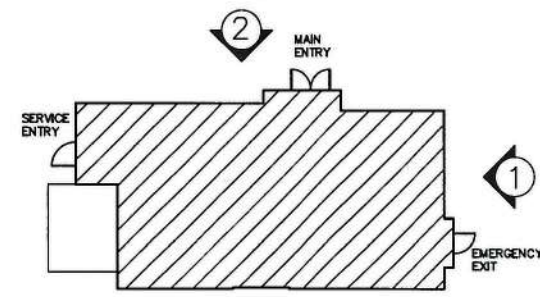
SYMBOL	MATERIAL	DESCRIPTION	REMARKS
K	6" CMU	PREP / PAINT. REFERENCE DRAWINGS, SECTIONS/ DETAILS.	
L	WALL MOUNT LADDERPORT	LADDERPORT TYPE 1 STANDARD MOUNT MODEL #F101 - CONTACT MICHELE ORAS AT LADDERPORT 1.865.770.4607	
M	CUSTOM PERIPHERY RING & BLUE LED LIGHT	2'-6" DIA. "PORTHOLE" W/ MOLDED PVC TRIM RING BY FYRON. TRIM RING MODEL NO. RLV28X4F, ROUND 35 3/16" X 1" SMOOTH. SEE T-1.1 FOR VENDOR CONTACT INFO.	CENTERED IN TOWER
N	AWNING	ALUMINUM AWNING	CONTACT AWNING VENDOR FOR SHOP DRAWINGS
O	ENTRY/DRIVE THRU CANOPY	ALUMINUM CANOPY COLOR: DARK BRONZE METAL	CONTACT AWNING VENDOR FOR SHOP DRAWINGS
P	H.M. DOOR & FRAME	EXTERIOR HOLLOW METAL DOOR - SEE A-11 FOR MORE INFORMATION	
Q	TANKLESS WATER HEATER DUAL INTAKE & EXHAUST	DUAL INTAKE & EXHAUST HORIZONTAL TERMINATION KIT FOR THE RAINNAI TANKLESS WATER HEATER SYSTEM	
R	HARDIEPANEL	SIGN BACKER, (1) LAYER @ COLOR 3 AND (1) LAYER @ COLOR 4 OF TOWER	
S	Z-FLASHING	TO BE INSTALLED AT ALL TRANSITIONS BETWEEN FINISHES "E" & "R"	
T	NOT USED		
U	HOSE BIB	G.C. TO PROVIDE MFG. RECOMMENDED ESCUTCHEONS PLATE.	REFER TO PLUMB. SHEETS FOR ADDIT. INFO.
V	EXTERIOR FREEZER/COOLER	PRE-FINISHED STEEL TO MATCH #1	
W	ALUMINUM FLASHING	COLOR - CLEAR ANODIZED TO MATCH STOREFRONT SYSTEM	
#1	PAINT	SHERWIN WILLIAM-SW 6651 CHERISH CREAM (CREAM/WHITE) OR PPG PAINTS - PITA BREAD PPG1089-1	PREP, PRIME, AND PAINT PER MANUFACTURER SPEC. FOR SURFACES/ MATERIAL INDICATED
#2	PAINT	SHERWIN WILLIAM-SW 7076 CYBER SPACE (GRAY) OR PPG PAINTS - GRAY FLANNEL PPG1013-6	
#3	PAINT	SHERWIN WILLIAM-SW 6711 PARAKEET (GREEN) OR PPG PAINTS - BEACH BAG PPG1117-5	
#4	PAINT	SHERWIN WILLIAM-SW 8479 DRIZZLE (BLUE) OR PPG PAINTS - PARAKEET PETE PPG1143-4	
#5	PAINT	SHERWIN WILLIAM-SW 3034 CEDAR (LIGHT BROWN) OR PPG PAINTS - LEATHER PPG15-14	
#6	PAINT	SHERWIN WILLIAM-SW 7005 PURE WHITE (WHITE) OR PPG PAINTS - READY MIXED WHITE	
#7	FILM GRAPHIC	SM - CUSTOM STRIPE APPLIQUE PATTERN	GRAPHIC APPLIED TO ALUMINUM AWNING, TYP.

GENERAL NOTES

- COORDINATE WITH MECHANICAL, PLUMBING, AND ELECTRICAL DRAWINGS FOR ALL PENETRATIONS IN THE EXTERIOR FACADES.
- SEE SHEET A-11 & A-11.1 FOR WINDOW/ DOOR TYPES AND DETAILS.
- NOT ALL SYMBOLS/ MATERIALS MAY BE USED OR REFERENCED ON DRAWINGS, TYP.
- PAINT ALL BOLLARDS #2



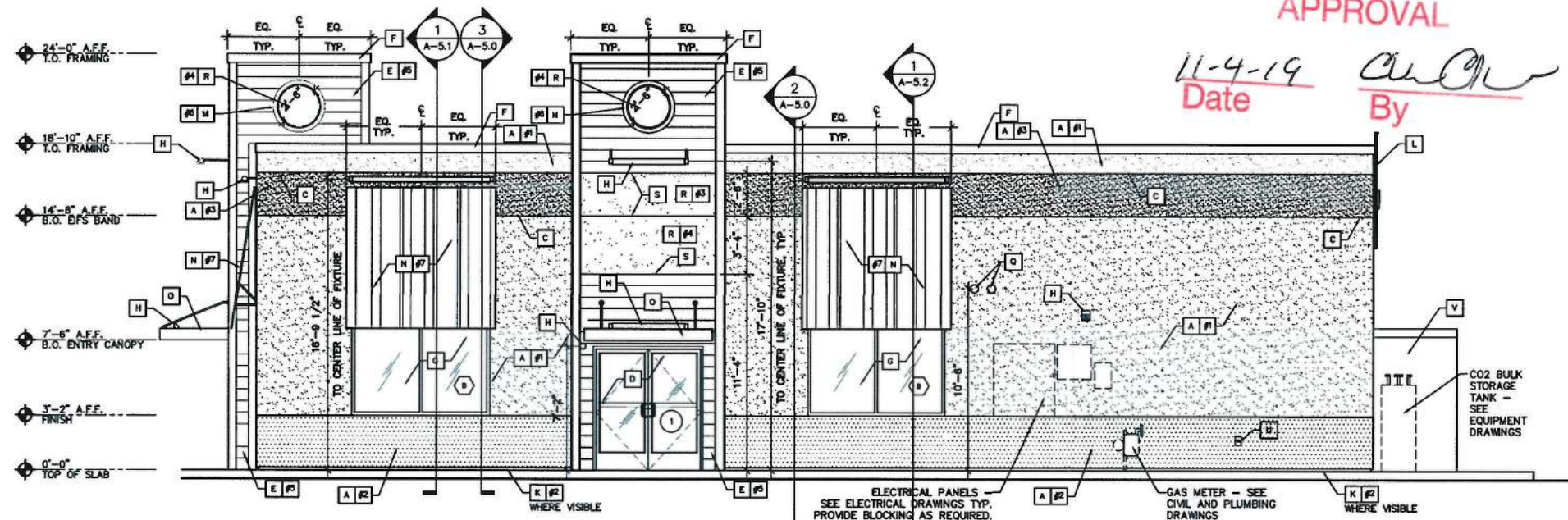
1 FRONT ELEVATION
SCALE: 1/4" = 1'-0"



KEY PLAN

EXECUTIVE DIRECTOR APPROVAL

11-4-19
Date By



2 RIGHT SIDE ELEVATION
SCALE: 1/4" = 1'-0"

GENERAL FASTENING REQUIREMENTS

- ALL FASTENERS MUST BE HOT-DIPPED OR STAINLESS STEEL.
- DRIVE FASTENERS PERPENDICULAR TO SIDING AND FRAMING.
- FASTENER HEADS SHOULD FIT SNUG AGAINST SIDING (NO AIR SPACE).
- DO NOT OVER-DRIVE HEADS OR DIVE NAILS AT ANGLE.
- IF NAIL IS COUNTERSUNK, CAULK NAIL HOLE WITH PAINT/STAINABLE FILLER APPROVED BY FINISH MATERIAL MANUFACTURE.
- UNDER DRIVEN NAILS SHOULD BE HIT FLUSH TO THE FACE WITH A SMOOTH FACE HAMMER.
- PNEUMATIC FASTENING - SET AIR PRESSURE SO THAT THE FASTENER IS DRIVEN SNUG WITH THE FINISH SURFACE. A FLUSH MOUNT ATTACHMENT ON THE PNEUMATIC TOOL IS RECOMMENDED. IF SETTING THE NAIL DEPTH PROVES DIFFICULT, CHOOSE A SETTING THAT UNDER DRIVES THE NAIL. (DRIVE UNDER DRIVEN NAILS SNUG WITH A SMOOTH FACE HAMMER)
- DO NOT USE ALUMINUM FASTENERS, STAPLES, OR CLIPPED HEAD NAILS.

ACCEPTABLE FASTENING

SNUG FLUSH

UNACCEPTABLE FASTENING & SOLUTIONS

COUNTERSUNK UNDER DRIVEN

SOLUTION: FILL HOLE WITH PAINT/STAINABLE FILLER APPROVED BY FINISH MATERIAL MANUFACTURE

SOLUTION: DRIVE SNUG WITH WITH A SMOOTH FACE HAMMER

A NEW LOCATION FOR
CAPTAIN D'S
7798 YOUREE DRIVE
SHREVEPORT, LA 71105
TRIDENT HOLDINGS, LLC & INVEST SQUARED, LLC



Job Number:
Revisions:

A-4.0
EXTERIOR ELEVATIONS

19-433-C

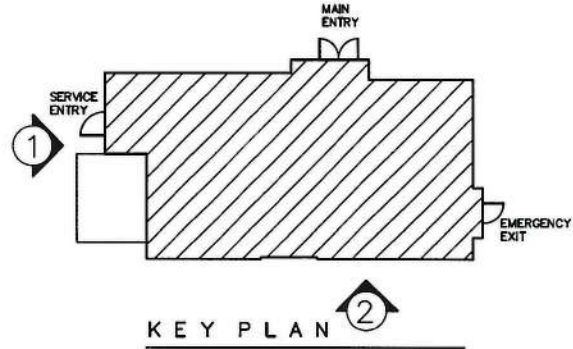
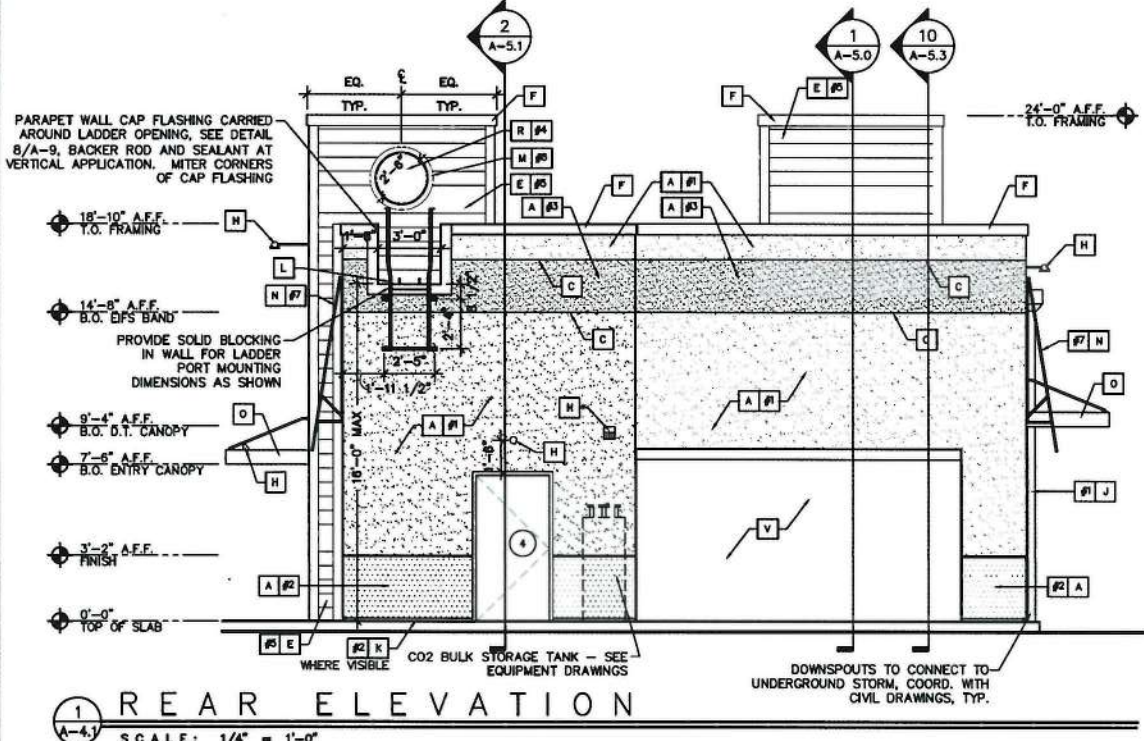
SYMBOL	MATERIAL	DESCRIPTION	REMARKS
A	E.I.F.S.	E.I.F.S. AS MANUFACTURED BY DRYVIT SYSTEMS, INC. PROVIDE "OUTSULATION RMD SYSTEM". THE SYSTEM CONFIGURATION SHALL BE TYPE 1 WITH BACKSTOP NT AND DRAINAGE MAT. SYSTEM TO BE 1" THICKNESS. PROVIDE WITH DRAINAGE TRACK OPTION. STANDARD FINISH & COLOR AS INDICATED ON DRAWINGS. ACCEPTABLE E.I.F.S. MANUFACTURERS INCLUDE STD, PAREX, & BASF - F ALTERNATE MANUFACTURER IS PREFERRED, PROVIDE SUBMITTAL & COLOR SELECTION TO CAPTAIN D'S REP. FOR REVIEW & APPROVAL. CONTROL JOINTS PER MANUFACTURER'S SPECIFICATIONS.	INSTALLATION PER MANUFACTURER SPECS.
B	CORONADO STONE VENEER	CHISELED STONE SILL --- LEDGESTONE, CORONADO HONEY LEDGE --- GOLDEN HARVEST	INSTALLATION PER MANUFACTURER SPECS.
C	E.I.F.S. REVEAL	USE MANUFACTURER'S STANDARD REVEAL DETAIL. SEE DETAIL 11/A9.1	INSTALLATION PER MANUFACTURER SPECS.
D	STOREFRONT DOOR	KAWNEER-SYSTEM: 190 SWING DOOR, FINISH: ALUMINUM, CLASS 1 CLEAR ANODIZED. NON-INSULATED AT DOORS. 1/4" GLASS PANES-COLOR: CLEAR, TEMPERED. ACCEPTABLE ALTERNATE MANUFACTURERS INCLUDE YKK AP, TUBELITE OR CORAL.	INSTALLATION PER MANUFACTURER SPECS.

SYMBOL	MATERIAL	DESCRIPTION	REMARKS
E	HARDIPLANK SELECT CEDARMILL	SELECT CEDARMILL --- SIZE: 9.25 IN.	INSTALLATION PER MAN. SPECS.
F	PARAPET WALL CAP	GALVANIZED STEEL CAP FLASHING. REFERENCE WALL SECTIONS, SHEETS A5.0. FOR DETAILS AND WALL SECTIONS, PREP AND PAINT - COLOR: ALUMINUM (TO MATCH CLEAR ANODIZED STOREFRONT SYSTEM).	INSTALLATION PER SMACNA
G	STOREFRONT WINDOWS	KAWNEER-SYSTEM: TRIFAB II 451. FINISH: ALUMINUM, CLASS 1 CLEAR ANODIZED, 1" INSULATED, TEMPERED. ACCEPTABLE ALTERNATE MANUFACTURERS INCLUDE YKK AP, TUBELITE OR CORAL. SOLARBAN 80 OR EQUIVALENT ON #2 SURFACE.	INSTALLATION PER MANUFACTURER SPECS.
H	EXTERIOR LIGHTING	SEE ELECTRICAL - FOR LINEAR SIGN LIGHTERS, USE TREADED NIPPLE FITTINGS BOTH ENDS - LIGHTS ABOVE AWNINGS TO RECEIVE 9" FITTING, TOWER LIGHTS TO RECEIVE 18" FITTING - RUN ELECTRICAL CONNECTION AT ONE END.	TOWER CANOPY HAS PREINSTALLED TOP SURFACE MOUNTED SIGN LIGHTER FIXTURE CONTAINING WHP FOR ELECTRICAL CONNECTION
J	SEAMLESS DOWNSPOUT	PRE-FINISHED ALUMINUM, COLOR TO MATCH SHERWIN WILLIAM-SW 6651 CHERISH CREAM (CREAM/WHITE)	REFER 12/A-9 & A-6 FOR ADDIT. INFO & LOCATION.

SYMBOL	MATERIAL	DESCRIPTION	REMARKS
K	6" CMU	PREP/ PAINT. REFERENCE DRAWINGS, SECTIONS/ DETAILS.	
L	WALL MOUNT LADDERPORT	LADDERPORT TYPE 1 STANDARD MOUNT MODEL #1101 - CONTACT MICHELE ORAS AT LADDERPORT 1.865.770.4607	
M	CUSTOM PERIPHERY RING & BLUE LED LIGHT	2'-6" DIA. "PORTHOLE" W/ MOLDED PVC TRIM RING BY FYPON. TRIM RING MODEL NO. RL228X4F, ROUND 35 3/16" X 3/16" X 1" SMOOTH. SEE T-1.1 FOR VENDOR CONTACT INFO.	CENTERED IN TOWER
N	AWNING	ALUMINUM AWNING	CONTACT AWNING VENDOR FOR SHOP DRAWINGS
O	ENTRY/DRIVE THRU CANOPY	ALUMINUM CANOPY COLOR: DARK BRONZE METAL	CONTACT AWNING VENDOR FOR SHOP DRAWINGS
P	H.M. DOOR & FRAME	EXTERIOR HOLLOW METAL DOOR - SEE A-11 FOR MORE INFORMATION	
Q	TANKLESS WATER HEATER DUAL INTAKE & EXHAUST	DUAL INTAKE & EXHAUST HORIZONTAL TERMINATION KIT FOR THE RAINNAI TANKLESS WATER HEATER SYSTEM	
R	HARDIEPANEL	SIGN BACKER, (1) LAYER @ COLOR 3 AND (1) LAYER @ COLOR 4 OF TOWER	
S	Z-FLASHING	TO BE INSTALLED AT ALL TRANSITIONS BETWEEN FINISHES "E" & "H"	
T	NOT USED		
U	HOSE BIB	G.C. TO PROVIDE MFG. RECOMMENDED ESCUTCHEONS PLATE.	REFER TO PLUMB. SHEETS FOR ADDIT. INFO.
V	EXTERIOR FREEZER/ COOLER	PRE-FINISHED STEEL TO MATCH #1	
W	ALUMINUM FLASHING	COLOR - CLEAR ANODIZED TO MATCH STOREFRONT SYSTEM	
#1	PAINT	SHERWIN WILLIAM-SW 6651 CHERISH CREAM (CREAM/WHITE) OR PPG PAINTS - PITA BREAD PPG1089-1	PREP, PRIME, AND PAINT PER MANUFACTURER SPEC. FOR SURFACES/ MATERIAL INDICATED
#2	PAINT	SHERWIN WILLIAM-SW 7076 CYBER SPACE (GRAY) OR PPG PAINTS - GRAY FLANNEL PPG1013-6	
#3	PAINT	SHERWIN WILLIAM-SW 6711 PARAKEET (GREEN) OR PPG PAINTS - BEACH BAG PPG117-5	
#4	PAINT	SHERWIN WILLIAM-SW 6479 DRIZZLE (BLUE) OR PPG PAINTS - PARAKEET PETE PPG1143-4	
#5	PAINT	SHERWIN WILLIAM-SW 3034 CEDAR (LIGHT BROWN) OR PPG PAINTS - LEATHER PPG15-14	
#6	PAINT	SHERWIN WILLIAM-SW 7005 PURE WHITE (WHITE) OR PPG PAINTS - READYMIXED WHITE	
#7	FILM GRAPHIC	3M - CUSTOM STRIPE APPLIQUE PATTERN	GRAPHIC APPLIED TO ALUMINUM AWNING, TYP.

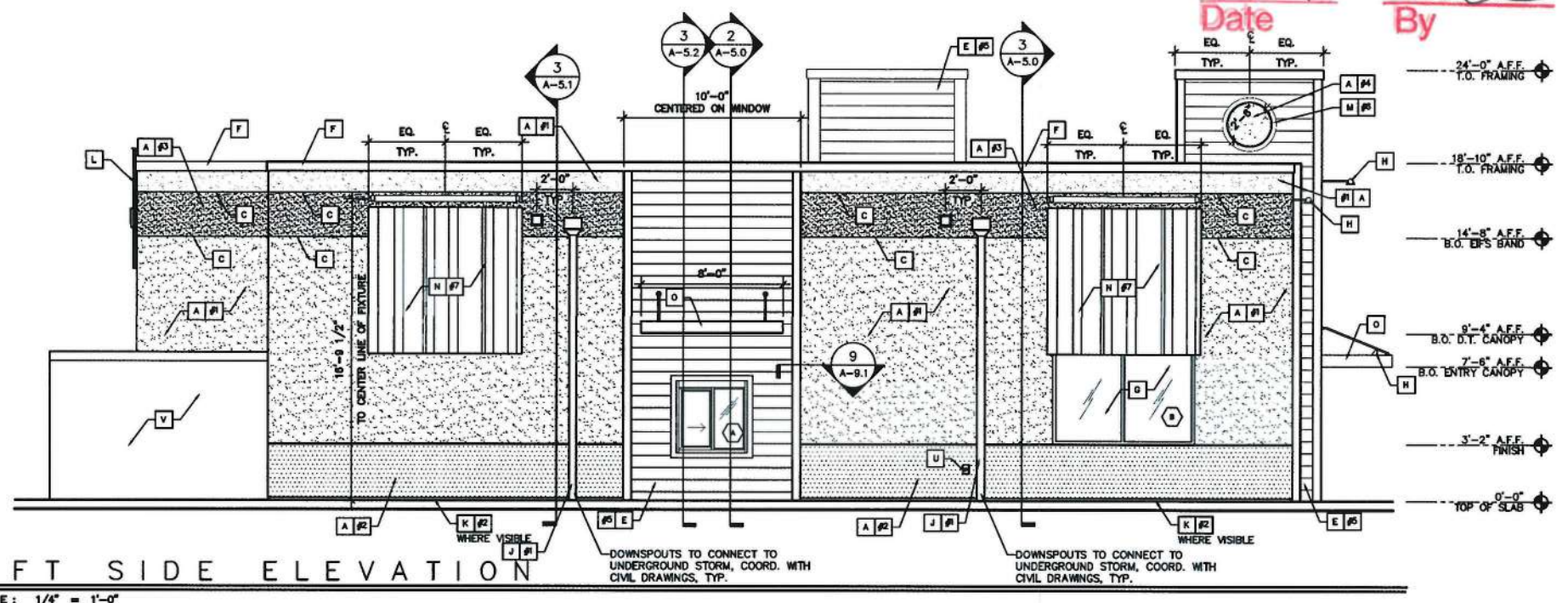
GENERAL NOTES

- COORDINATE WITH MECHANICAL, PLUMBING, AND ELECTRICAL DRAWINGS FOR ALL PENETRATIONS IN THE EXTERIOR FACADES.
- SEE SHEET A-11 & A-11.1 FOR WINDOW/ DOOR TYPES AND DETAILS.
- NOT ALL SYMBOLS/ MATERIALS MAY BE USED OR REFERENCED ON DRAWINGS, TYP.
- PAINT ALL BOLLARDS #2



EXECUTIVE DIRECTOR APPROVAL

11-4-19 Date By



GENERAL FASTENING REQUIREMENTS

- ALL FASTENERS MUST BE HOT-DIPPED OR STAINLESS STEEL.
- DRIVE FASTENERS PERPENDICULAR TO SIDING AND FRAMING.
- FASTENER HEADS SHOULD FIT SNUG AGAINST SIDING (NO AIR SPACE).
- DO NOT OVER-DRIVE HEADS OR DIVE NAILS AT ANGLE.
- IF NAIL IS COUNTERSUNK, CAULK NAIL HOLE WITH PAINT/STAINABLE FILLER APPROVED BY FINISH MATERIAL MANUFACTURE.
- UNDER DRIVEN NAILS SHOULD BE HIT FLUSH TO THE FACE WITH A SMOOTH FACE HAMMER.
- PNEUMATIC FASTENING - SET AIR PRESSURE SO THAT THE FASTENER IS DRIVEN SNUG WITH THE FINISH SURFACE. A FLUSH MOUNT ATTACHMENT ON THE PNEUMATIC TOOL IS RECOMMENDED. IF SETTING THE NAIL DEPTH PROVES DIFFICULT, CHOOSE A SETTING THAT UNDER DRIVES THE NAIL. (DRIVE UNDER DRIVEN NAILS SNUG WITH A SMOOTH FACE HAMMER)
- DO NOT USE ALUMINUM FASTENERS, STAPLES, OR CLIPPED HEAD NAILS.

ACCEPTABLE FASTENING

SNUG FLUSH

UNACCEPTABLE FASTENING & SOLUTIONS

COUNTERSUNK UNDER DRIVEN

SOLUTION: FILL HOLE WITH PAINT/STAINABLE FILLER APPROVED BY FINISH MATERIAL MANUFACTURE SOLUTION: DRIVE SNUG WITH WITH A SMOOTH FACE HAMMER

CAPTAIN D'S
A NEW LOCATION FOR
7798 YOUREE DRIVE
SHREVEPORT, LA 71105

TRIDENT HOLDINGS, LLC & INVEST SQUARED, LLC

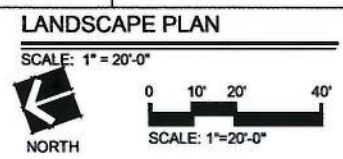
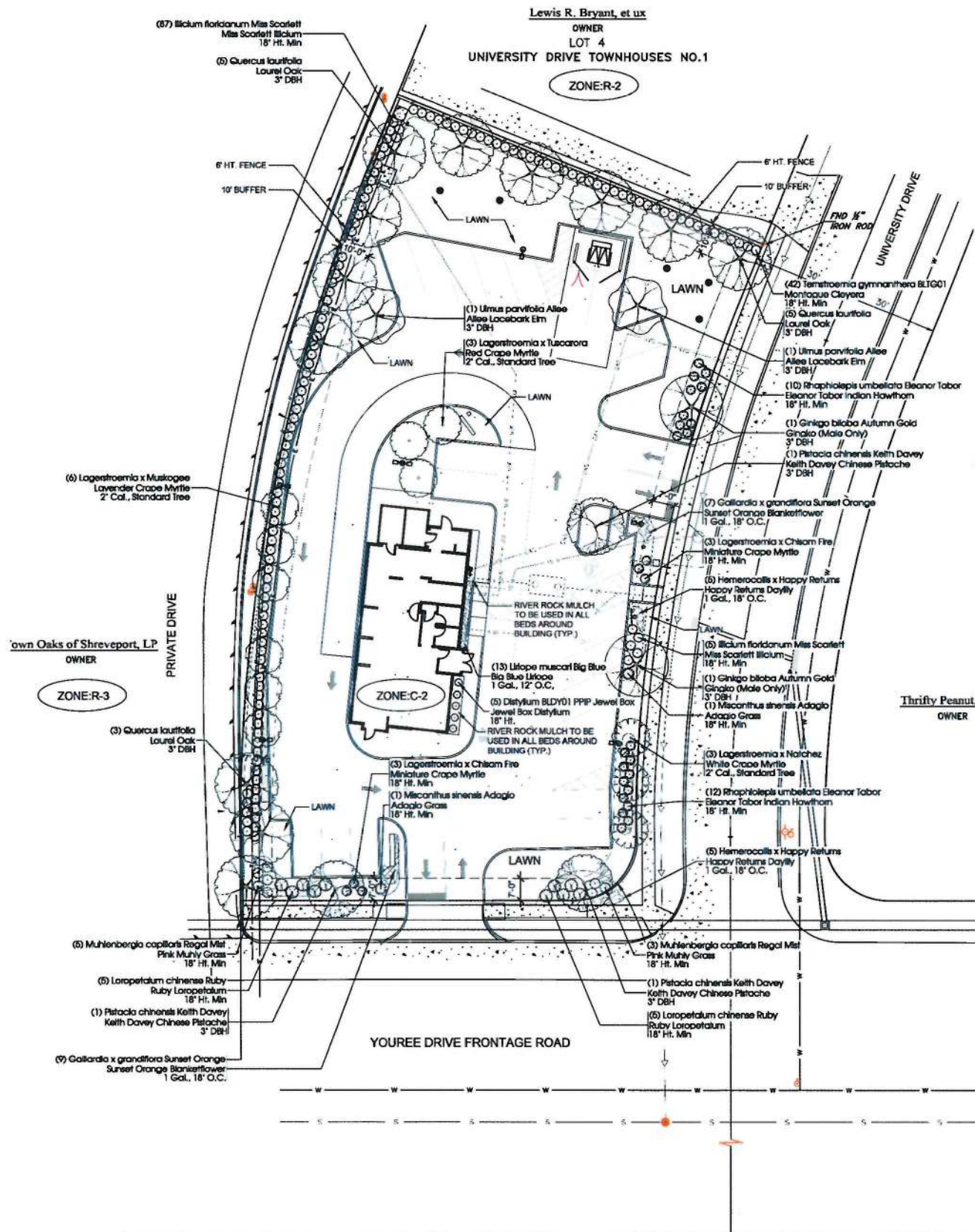


Job Number: _____

Revisions: _____

A-4.1
EXTERIOR ELEVATIONS

19-433-C



YOUREE DRIVE

LANDSCAPE NOTES

- THE LANDSCAPE CONTRACTOR SHALL VERIFY THE EXACT LOCATION OF ALL UTILITIES AND TAKE NECESSARY PRECAUTIONS TO PREVENT DAMAGE.
- FINAL GRADING SHALL BE EXECUTED IN SUCH A MANNER TO PROVIDE POSITIVE DRAINAGE.
- PROTECT EXISTING TREES ON SITE BY INSTALLATION OF A PROTECTION FENCE AT THE DRIP LINE OF TREES OR AS REQUIRED BY MUNICIPALITY BMP.
- TREES SHALL REMAIN UNLESS SPECIFIED FOR REMOVAL. DO NOT PLACE SOIL OR DEBRIS WITHIN THE DRIPLINE OF THE TREE. TREES TO REMAIN ARE TO BE PROTECTED FROM DISTURBANCE IN THE CRITICAL ROOT ZONE (CRZ).
- BERM ALL BEDS WITH A MINIMUM OF 4-6" OF TOPSOIL UNLESS OTHERWISE NOTED, USING SUITABLE TOPSOIL. SUITABLE TOPSOIL IS CONSIDERED LOAMY SOILS THAT ARE A MIXTURE OF SAND, SILT, AND CLAY WITH A MINIMUM OF 1.5% DRY WEIGHT ORGANIC MATTER AND A CLAY CONTENT BETWEEN 15-25%.
 - TOPSOIL MUST BE TESTED FOR TEXTURE, DRAINAGE CAPABILITY, NUTRIENT VALUES, AND PH PRIOR TO INSTALLATION.
 - TOPSOIL SHALL BE FREE FROM SUBSOIL VEGETATION, WEEDS OR ANY EXTRANEOUS OR DELETERIOUS MATERIALS LARGER THAN 1". REMOVE ANY UNSUITABLE AND EXCESS TOPSOIL FROM THE SITE.
- WHEN PLANTING TREES USE A LANDSCAPE MIX WITH 3 PARTS FRIABLE NATIVE TOPSOIL, 2 PARTS AGED GROUND BARK HUMUS, AND 1 PART COURSE TO MEDIUM SAND.
- CONTRACTOR TO VERIFY ALL MATERIAL QUANTITIES. IN THE EVENT OF ANY DISCREPANCY, THE QUANTITIES SHOWN ON THE PLAN WILL TAKE PRECEDENCE.
- PLANT TREES WITH ROOT FLARE 1-2" ABOVE GRADE. ALL PLANTINGS SHALL CONFORM TO ANSI Z60.1 LATEST EDITION.
- ALL TREES SHALL HAVE A 3" DIAMETER MULCH RING COVERED WITH A THICK LAYER OF HARDWOOD MULCH UNLESS OTHERWISE SPECIFIED. BARK MULCH SHALL BE APPROVED BY LANDSCAPE ARCHITECT AND SHALL BE UNIFORM IN TEXTURE AND COLOR. ALL PLANTING BEDS SHALL HAVE A PRE-EMERGENT APPLIED AS PER MANUFACTURER'S RECOMMENDATION. ROOT FLARE OF TREE SHALL BE VISIBLE.
- ALL PLANTING BEDS SHALL HAVE A THICK LAYER OF HARDWOOD MULCH UNLESS OTHERWISE SPECIFIED. BARK MULCH SHALL BE APPROVED BY LANDSCAPE ARCHITECT AND SHALL BE UNIFORM IN TEXTURE AND COLOR. NO UTILITY MULCH OR PROCESSED TREE TRIMMINGS WILL BE ALLOWED. ALL PLANTING BEDS SHALL HAVE A PRE-EMERGENT APPLIED AS PER MANUFACTURER'S RECOMMENDATION.
- ALL TREES TO HAVE SCOTT'S AGRIFORM 20-10-5 FERTILIZER TABLETS OR APPROVED EQUAL FOR 2 YEAR ROOT ZONE FEEDING. APPLICATION AND INSTALLATION PER MANUFACTURER'S SPECIFICATIONS.
- PLANTS AND ALL OTHER MATERIALS STORED ON SITE WILL BE PLACED WHERE THEY DO NOT CONFLICT WITH CONSTRUCTION. LOCATE MATERIALS AS DIRECTED BY OWNER AND/OR GENERAL CONTRACTOR.
- SOODEDLAWN AREAS ARE TO BE GRADED UNIFORMLY WITHOUT ANY UNDULATIONS OR IRREGULARITIES IN THE SURFACE PRIOR TO ANY SOODSEED INSTALLATION.
- LAWN FERTILIZER IS TO BE ORGANIC UNIFORM IN COMPOSITION AND FREE FLOWING.
- GRASS AREAS SHALL BE PLANTED IN SPECIES NORMALLY GROWN AS PERMANENT LAWNS FOR THE SITE LOCATION.
- ALL DISTURBED AREAS SHALL BE SEEDED, SOODED, OR PLANTED WITH GROUNDCOVERS.
- CONTRACTOR SHALL MAINTAIN LANDSCAPING UNTIL FINAL APPROVAL. KEEP LAWNS MOWED. ALL PLANTS MAINTAINED DISEASE-FREE, AND PLANTING BEDS GROOMED, EXCEPT IN NATURALLY OCCURRING VEGETATION AREAS.
- ALL PLANT MATERIAL SHALL EXCEED THE STANDARDS SET FORTH IN "AMERICAN STANDARD FOR NURSERY STOCK". ALL PLANTS MUST MEET OR EXCEED MINIMUM SIZE NOTED IN THE MATERIALS SCHEDULE. TREES SHALL BE NO. 1 GRADE SPECIMEN AND SHRUBS SHALL BE HEAVY, WELL SHAPED SPECIMENS.
- CONTRACTOR IS RESPONSIBLE FOR REVIEWING AND MEETING PLANTING SPECIFICATIONS "SECTION 320300: PLANTS".
- PLANTING SEASON: PLANTINGS SHALL BE PLANTED DURING OPTIMAL PLANTING SEASON FOR REGION. PLANTING OUTSIDE OF REGION'S OPTIMUM PLANTING SEASON SHALL BE VERIFIED BY LANDSCAPE ARCHITECT. ALL MEASURES OF CARE TO INCLUDE PERMANENT OR TEMPORARY IRRIGATION SHALL BE IN PLACE FOR OUT OF SEASON PLANTINGS.
- TEMPORARY IRRIGATION MAY BE REQUIRED FOR SUMMER PLANTINGS AS NECESSARY FOR ESTABLISHMENT. CONTRACTOR RESPONSIBLE FOR WATERING ALL PLANTS AS REQUIRED FOR ESTABLISHMENT.
- CONTRACTOR TO PROVIDE AN ACCURATE PHOTO OF ALL PLANTING MATERIALS TO BE INSTALLED. THE PHOTO SHALL DEPICT AN AVERAGE REPRESENTATION OF PLANT MATERIALS SPECIFIED. A GRADE STAKE OR TAPE MEASURE TO BE USED IN PHOTO TO VERIFY SPECIFIED PLANT SIZE.
- IN THE EVENT PROPOSED CANOPY TREES ARE IN CONFLICT (WITHIN 25') WITH PROPOSED OR EXISTING OVERHEAD UTILITY LOCATIONS, THE LANDSCAPE CONTRACTOR SHALL STOP WORK AND CONTACT LANDSCAPE ARCHITECT IMMEDIATELY FOR COORDINATION AND FIELD ADJUSTMENT.
- IN THE EVENT PROPOSED CANOPY TREES ARE IN CONFLICT (WITHIN 15') WITH PROPOSED OR EXISTING LIGHT POLE LOCATIONS, THE LANDSCAPE CONTRACTOR SHALL STOP WORK AND CONTACT LANDSCAPE ARCHITECT IMMEDIATELY FOR COORDINATION AND FIELD ADJUSTMENT.
- THE CONTRACTOR IS RESPONSIBLE FOR OBTAINING A COPY OF THE PROJECT SPECIFICATIONS PRIOR TO BIDDING. THE PROJECT SPECIFICATIONS ARE A PART OF THESE PLANS AND SHALL BE CONSULTED BY THE CONTRACTOR. THE CONTRACTOR IS RESPONSIBLE FOR IMPLEMENTING WORK AS SPECIFIED IN THE PROJECT SPECIFICATIONS AND ON THE PLANS.

LANDSCAPE ORDINANCE

- REAR BUFFER:**
- WIDTH= 10'
 - 1 SHADE TREE OR 3 ORNAMENTAL TREES REQUIRED EVERY 30 LINEAR FEET
 - CALCULATION: $125/30 = 5$ SHADE TREES REQUIRED OR 15 ORNAMENTAL TREES
 - 5 SHADE TREES PROVIDED
 - 1 SHRUB PER EVERY 3 LINEAR FEET
 - CALCULATION: $125/3 = 42$ SHRUBS REQUIRED
 - 42 SHRUBS PROVIDED
 - 6-8" OPAQUE FENCE OR WALL REQUIRED
- SIDE BUFFER:**
- WIDTH=10'
 - 1 SHADE TREE OR 3 ORNAMENTAL TREES REQUIRED EVERY 30 LINEAR FEET
 - CALCULATION: $259/30 = 9$ SHADE TREES OR 27 ORNAMENTAL TREES REQUIRED (3 ORNAMENTAL IN LIEU OF 1 SHADE TREE)
 - 7 SHADE TREES AND 6 ORNAMENTAL TREES PROVIDED
 - 1 SHRUB PER 3 LINEAR FEET
 - CALCULATION: $259/3 = 87$ SHRUBS REQUIRED
 - 87 SHRUBS PROVIDED
 - 6-8" OPAQUE FENCE OR WALL REQUIRED
- RIGHT OF WAY/ PARKING EDGE:**
- WIDTH= 7'
 - 1 SHADE TREE OR 3 ORNAMENTAL TREES REQUIRED 500' OF PLANTING AREA
 - YOUREE DRIVE: $(81' \times 7') = 567$ SQFT / 500 = 2 SHADE TREES OR 6 ORNAMENTAL TREES REQUIRED
 - 2 SHADE TREES PROVIDED
 - UNIVERSITY DRIVE: $(192' \times 7') = 1,344$ SQFT / 500 = 3 SHADE TREES OR 9 ORNAMENTAL TREES REQUIRED 3 ORNAMENTAL IN LIEU OF 1 SHADE TREE
 - 2 SHADE TREES AND 3 ORNAMENTAL TREES PROVIDED
 - 10 SHRUBS REQUIRED PER 500' OF PLANTING AREA
 - YOUREE DRIVE: $(81' \times 7') = 567$ SQFT / 500 = 2 X10= 20 SHRUBS REQUIRED
 - 20 SHRUBS PROVIDED
 - UNIVERSITY DRIVE: $(192' \times 7') = 1,344$ SQFT / 500 = 3 X 10= 30 SHRUBS REQUIRED
 - 31 SHRUBS PROVIDED
 - FENCE >5' IN HT ENCOURAGED, BUT NOT REQUIRED
- PARKING:**
- 10% OF PARKING AREA MUST BE LANDSCAPE ISLANDS AND AREAS (EXCLUDING PARKING EDGE)
 - CALCULATION: $10,741$ SQFT OF PARKING AREA X .10= 1,075 SQFT OF PARKING LANDSCAPE REQUIRED
 - 1,946 SQFT OF LANDSCAPE PLANTING PROVIDED
- DIVERSITY FACTOR:**
- WHERE 26-50 TREES REQUIRED, 5(MIN) SPECIES MUST BE SPECIFIED
 - TREE SPECIES SPECIFIED: 5
 - WHERE 51+ SHRUBS ARE REQUIRED, 7(MIN) SPECIES MUST BE SPECIFIED
 - SHRUB SPECIES SPECIFIED: 8

PLANT SCHEDULE

TREES				
Symbol	QTY	Scientific Name	Common Name	Planting Size
⊙	2	Ginkgo biloba 'Autumn Gold'	Ginkgo (Male Only)	3" DBH
⊙	6	Lagerstroemia x 'Mistakee'	Lavender Crape Myrtle	2" Cal. Standard Tree
⊙	3	Lagerstroemia x 'Natchez'	White Crape Myrtle	2" Cal. Standard Tree
⊙	3	Lagerstroemia x 'Tuscarora'	Red Crape Myrtle	2" Cal. Standard Tree
⊙	3	Pataca chinensis 'Keith Davey'	Keith Davey Chinese Pistache (Male Only)	3" DBH
⊙	12	Quercus laurifolia	Laural Oak	3" DBH
⊙	2	Ulmus parvifolia 'Alicia'	Alicia Lacebark Elm	3" DBH
SHRUBS				
Symbol	QTY	Scientific Name	Common Name	Planting Size
⊙	5	Diastylis 'BLDY01 PPIP' 'Jewel Box'	Jewel Box Diastylis	18" HL Min
⊙	92	Blicum floridanum 'Miss Scarlett'	Miss Scarlett Blicum	18" HL Min
⊙	6	Lagerstroemia x 'Chisam Fire'	Miniature Crape Myrtle	18" HL Min
⊙	10	Loropetalum chinense 'Ruby'	Ruby Loropetalum	18" HL Min
⊙	2	Miscanthus sinensis 'Adagio'	Adagio Grass	18" HL Min
⊙	8	Muhlenbergia capillaris 'Regal Mist'	Pink Muhly Grass	18" HL Min
⊙	22	Rhaphiolepis umbellata 'Eleanor Tabor'	Eleanor Tabor Indian Hawthorn	18" HL Min
⊙	42	Tenstroemia gymnanthera 'BLTG01'	Montague Cleyera	18" HL Min
GROUNDCOVER				
Symbol	QTY	Scientific Name	Common Name	Planting Size
⊙	16	Gallardia x grandiflora 'Sunset Orange'	Sunset Orange Blanketflower	1 Gal. 18" O.C.
⊙	16	Hemerocallis x 'Happy Returns'	Happy Returns Daylily	1 Gal. 18" O.C.
⊙	13	Liriope muscari 'Big Blue'	Big Blue Liriope	1 Gal. 12" O.C.
LAWN	TBD	Paspalum notatum	Bahia Grass Sod	800

EXECUTIVE DIRECTOR APPROVAL

11-4-19 Date By Arch

A NEW LOCATION FOR
CAPTAIN D'S
 7798 YOUREE DRIVE
 SHREVEPORT, LA 71105
TRIDENT HOLDINGS, LLC
 & INVEST SQUARED, LLC



Job Number:
 Revisions:
 Revisions per Size Plan Change 10-24-19

LANDSCAPE PLAN

L-1.0

19-433-C

IRRIGATION NOTES

- CONTRACTOR RESPONSIBLE FOR ALL HEAD, VALVE AND PIPE LOCATIONS AS IF FULLY SHOWN ON PLAN.
- CONTRACTOR RESPONSIBLE FOR ALL CALCULATIONS REQUIRED FOR IRRIGATION ZONE PERFORMANCE.
- CONTRACTOR TO FIELD LOCATE PIPING ALONG CURBS AND LANDSCAPE BEDS OUT OF CONFLICT WITH PLANTINGS AND OTHER UTILITIES.
- IRRIGATION CONTRACTOR TO PROVIDE LANDSCAPE ARCHITECT WITH SHOP DRAWINGS PRIOR TO INSTALLATION. A SET OF AS-BUILT PLANS WITH ALL VALVE AND PIPE LOCATION AND SIZES TO BE SUBMITTED TO LANDSCAPE ARCHITECT UPON ACCEPTANCE OF SYSTEM.
- THE CONTRACTOR IS RESPONSIBLE FOR OBTAINING A COPY OF THE PROJECT SPECIFICATIONS PRIOR TO BIDDING. THE PROJECT SPECIFICATIONS ARE A PART OF THESE PLANS AND SHALL BE CONSULTED BY THE IRRIGATION CONTRACTOR. THE CONTRACTOR IS RESPONSIBLE FOR IMPLEMENTING WORK AS SPECIFIED IN THE PROJECT SPECIFICATIONS AND ON THE PLANS.
- CONTRACTOR SHALL VERIFY ALL DIMENSIONS, ELEVATIONS, EQUIPMENT QUANTITIES, AND UTILITY LOCATIONS PRIOR TO BEGINNING WORK.
- CONTRACTOR SHALL NOTIFY LANDSCAPE ARCHITECT OF ANY DISCREPANCIES IN PLANS OR SPECIFICATIONS PRIOR TO BEGINNING OR CONTINUING WORK.
- THE CONTRACTOR SHALL MAKE NO SUBSTITUTIONS, DELETIONS, OR ADDITIONS TO THIS PLAN WITHOUT APPROVAL OF THE LANDSCAPE ARCHITECT.
- ALL CONSTRUCTION SHALL CONFORM TO CITY, COUNTY, STATE, AND FEDERAL REQUIREMENTS. IT SHALL BE THE RESPONSIBILITY OF THE IRRIGATION CONTRACTOR TO ENSURE THAT ALL IRRIGATION EQUIPMENT MEETS GOVERNMENT REGULATIONS. CONTRACTOR SHALL ALSO BE RESPONSIBLE FOR OBTAINING ANY NECESSARY PERMITS OR APPROVALS.
- THIS PLAN IS SCHEMATIC AND DUE TO THE NATURE OF CONSTRUCTION SLIGHT FIELD MODIFICATIONS MAY BE NECESSARY TO IMPLEMENT PLAN.
- CONTRACTOR TO VERIFY ACTUAL AVAILABLE WATER PRESSURE BEFORE BEGINNING INSTALLATION. CONTRACTOR SHALL NOTIFY LANDSCAPE ARCHITECT IF AVAILABLE WATER PRESSURE EXCEEDS 5 PSI HIGHER OR LOWER THAN AVAILABLE WATER PRESSURE.
- IRRIGATION SYSTEMS CONNECTED TO POTABLE WATER SUPPLY, SHALL HAVE A BACKFLOW PREVENTER INSTALLED.
- WHERE APPLICABLE IRRIGATION HEADS ARE TO BE ADJUSTED FOR COMPLETE COVERAGE WITH MINIMUM OVER SPRAY BEYOND LANDSCAPE AREAS.
- IRRIGATE TREES WITH LOW FLOW DRIP IRRIGATION SYSTEM ON INDEPENDENT ZONE.
- EXISTING TREES TO REMAIN ARE TO BE PROTECTED FROM DAMAGE. DO NOT TRENCH OR EXCAVATE WITHIN THE CRITICAL ROOT ZONE OF ANY TREE.
- IRRIGATION LATERAL LINES, MAIN LINES AND EQUIPMENT MAY BE SHOWN OUTSIDE PROPERTY LINES ON THIS PLAN. ALL IRRIGATION LINES AND EQUIPMENT ARE TO BE WITHIN AND INSTALLED WITHIN THE LIMITS OF THE PROPERTY LINE.
- ALL IRRIGATION SLEEVING TO BE THE RESPONSIBILITY OF THE IRRIGATION CONTRACTOR. ELECTRICAL WIRES FOR IRRIGATION VALVES AND IRRIGATION LINES ARE TO BE PLACED IN SEPARATE SLEEVES SEE SLEEVING DETAIL.
- SUPPLY LINE AND METER TO BE PROVIDED BY GENERAL CONTRACTOR. BACKFLOW PREVENTER TO BE PROVIDED BY IRRIGATION CONTRACTOR. IRRIGATION CONTRACTOR'S POINT OF CONNECTION TO BEGIN AFTER THE IRRIGATION WATER METER.
- IRRIGATION CONTRACTOR SHALL REVIEW WINTERIZATION PROCEDURES FOR IRRIGATION SYSTEM WITH OWNERS REPRESENTATIVE.

SITE DATA

Address: 7798 Youree Drive Shreveport, LA Zone: C-2

IRRIGATION SYSTEM DESIGN DATA

PRESSURE :	CRITICAL HEAD:	*CONTRACTOR TO VERIFY AVAILABLE PRESSURE. NOTIFY LANDSCAPE ARCHITECT IF PRESSURE IS LESS THAN THE DESIGNED PRESSURE VALUE.
ASSUMED STATIC PRESSURE: 75 PSI	LOSS THROUGH METER= 7.8 PSI	
PRESSURE AVAILABLE @ P.O.C. ± 50-55 PSI	LOSS THROUGH BACK FLOW= 4.62 PSI	
PRESSURE REDUCER SET @ or Between 50-55 PSI	LOSS THROUGH MASTER VALVE= 1.5 PSI	
PRESSURE @ CRITICAL HEAD: -30 PSI	LOSS THROUGH MAIN LINE= 1.83 PSI	
OPTIMUM OPERATION PRESSURE 40 PSI	LOSS THROUGH LATERAL= 9.25 PSI	
MINIMUM OPERATION PRESSURE 25 PSI	TOTAL LOSS= 25 PSI	
	PRESSURE AVAILABLE AT C.H. = 30 PSI	

ZONE KEY & SCHEDULE

ZONE	LAWN ZONES:	DRIP ZONES:
Zone 1	21.22 GPM	4.58 GPM
Zone D1	17.63 GPM	2.38 GPM
Zone 2	16.99 GPM	

*CONTRACTOR TO VERIFY WATER SOURCE. IF RECLAIMED WATER IS TO BE USED, CONTRACTOR TO USE PURPLE PIPE AND HEADS AND EMITTERS TO HAVE RECLAIMED WATER MARKINGS AS REQUIRED BY LOCAL AND STATE MUNICIPALITY. SIGN TO BE POSTED AS NON-POTABLE WATER. DO NOT DRINK. CONTRACTOR TO PULL ALL REQUIRED PERMITS AND FOLLOW ALL LOCAL AND STATE CODES AND ORDINANCES.

IRRIGATION KEY

GENERAL		SPRAY ZONES	
1" METER PROVIDED BY ENGINEER	2" MAINLINE PVC SCHEDULE 40	90 PATTERN / HUNTER MP ROTATOR SERIES (#= 1,000, 2,000, 3,000 NOZZLE)	LATERAL LINE PVC SCHEDULE 40 (AS NOTED)
PRESSURE REDUCER LF#58 BY WATTS OR APPROVED EQUAL	SLEEVE AS REQUIRED. CONTRACTOR TO SIZE. BLEEVERS TO BE 2x SIZE OF MAIN AND/OR LATERAL LINES.	180 PATTERN / HUNTER MP ROTATOR SERIES (#= 1,000, 2,000, 3,000 NOZZLE)	SLEEVE AS REQUIRED. CONTRACTOR TO SIZE. BLEEVERS TO BE 2x SIZE OF MAIN AND/OR LATERAL LINES.
1" ISOLATION VALVE	270 PATTERN / HUNTER MP ROTATOR SERIES (#= 1,000, 2,000, 3,000 NOZZLE)	360 PATTERN / HUNTER MP ROTATOR SERIES (#= 1,000, 2,000, 3,000 NOZZLE)	SLEEVE AS REQUIRED. CONTRACTOR TO SIZE. BLEEVERS TO BE 2x SIZE OF MAIN AND/OR LATERAL LINES.
1" RPZ BACK FLOW PREVENTER PROVIDED BY ENGINEER	MP ROTATOR BIDE STRIP BY HUNTER	MP ROTATOR RIGHT/LEFT CORNER STRIP BY HUNTER	
MASTER VALVE, 1.5" ICV-151 SERIES ELECTRIC VALVE BY HUNTER	DRIP IRRIGATION (SEE DRIP IRRIGATION MATERIAL)		
PRO C CONTROLLER BY HUNTER			
WIRELESS RAIN CLIK SENSOR BY HUNTER			
1.5" ICV-151 SERIES ELECTRIC VALVE BY HUNTER			
1.5" ICV-151 SERIES ELECTRIC DRIP VALVE BY HUNTER			
FLOW SENSOR FLOW CLK FCT-150 BY HUNTER- LOCATED AT EACH VALVE			

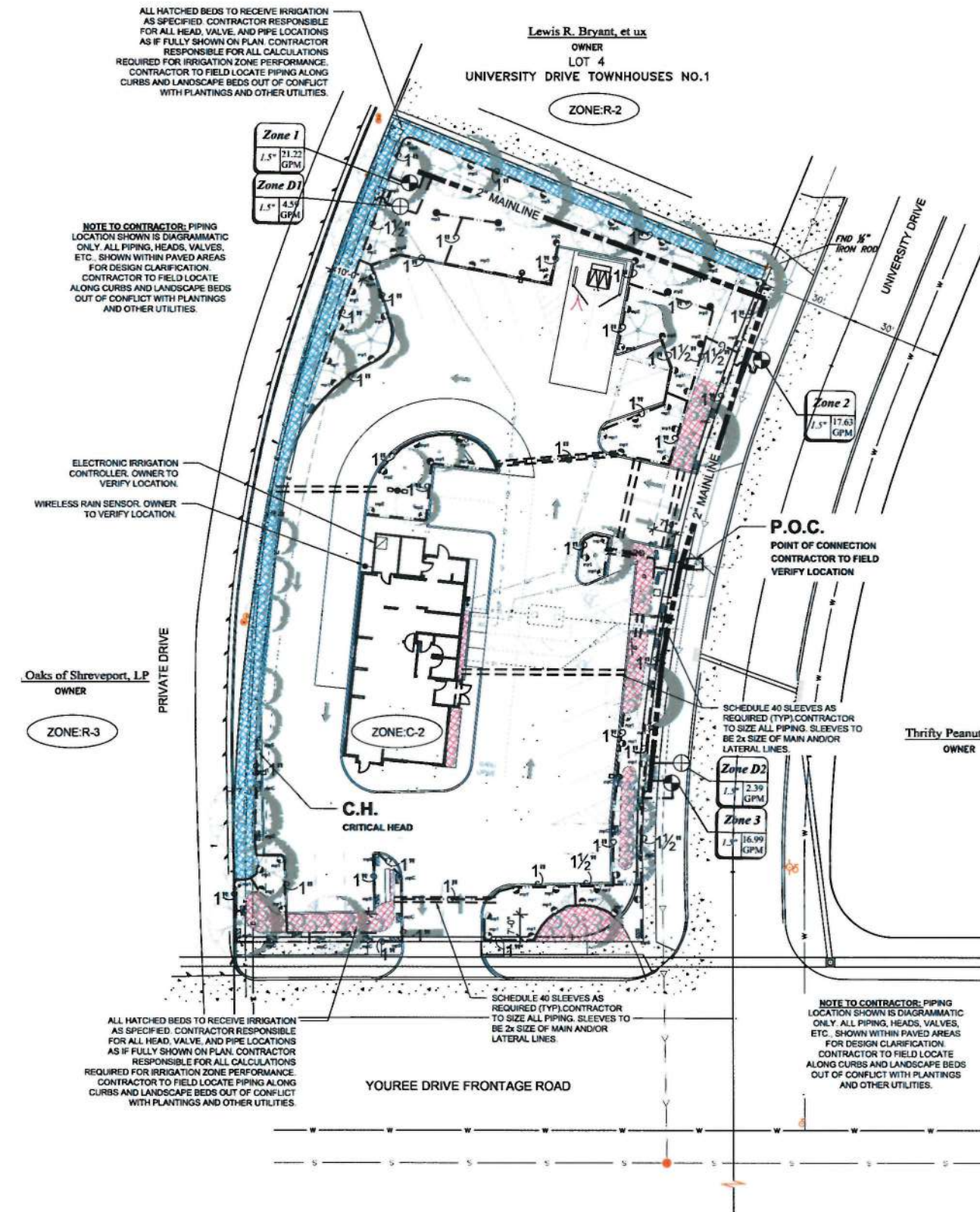
NOTE TO CONTRACTOR: PIPING LOCATION SHOWN IS DIAGRAMMATIC ONLY. ALL PIPING, HEADS, VALVES, ETC. SHOWN WITHIN PAVED AREAS FOR DESIGN CLARIFICATION. CONTRACTOR TO FIELD LOCATE ALONG CURBS AND LANDSCAPE BEDS OUT OF CONFLICT WITH PLANTINGS AND OTHER UTILITIES.

**DRIP IRRIGATION MATERIAL

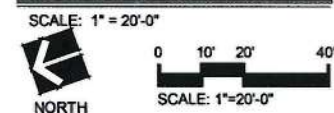
- | 1) TREES, SHRUBS, AND PERENNIALS: | 2) GROUND COVER ONLY |
|---|---|
| A) POINT SOURCE EMITTERS SYSTEM BY HUNTER INDUSTRIES OR APPROVED EQUAL
1) EMITTER SIZES: 0.5 GPH, 1.0 GPH, 2.0 GPH
2) SEE "DRIP EMITTER SCHEDULE" FOR EMITTER QUANTITY AND SIZES PER PLANT.
3) SUPPLY TUBING (1/2" POLYETHYLENE FLEXIBLE TUBING)
4) DISTRIBUTION TUBING (1/2" POLYETHYLENE FLEXIBLE TUBING) | A) HDL SERIES DRIPLINE SYSTEM BY HUNTER INDUSTRIES
1) DRIPLINE HOSE EMITTER SPACING: 12", 18", OR 24" O.C.
2) SUPPLY TUBING (1/2" POLYETHYLENE FLEXIBLE TUBING)
3) DISTRIBUTION TUBING (1/2" POLYETHYLENE FLEXIBLE TUBING) |

DRIP EMITTER SCHEDULE

TREES				SHRUBS			
Species	Emitter Sz	Emitter QTY		Species	Emitter Sz	Emitter QTY	
Carya illinoensis 'Acutum Gold'	1 GPH	3		Chrysanthemum 'BLOTT' (PPH) 'Jewel Box'	1 GPH	2	
Lagerstroemia x 'Natchez'	3 GPH	3		Lonicera 'Mandarin'	1 GPH	2	
Lagerstroemia x 'Natchez'	3 GPH	3		Lagerstroemia x 'Chassis Fall'	1 GPH	2	
Lagerstroemia x 'Tuscarora'	3 GPH	3		Laropetalum chinense 'Ruby'	1 GPH	2	
Prunella chinensis 'Kath Davay'	1 GPH	3		Miscanthus sinensis 'Adagio'	1 GPH	2	
Quercus laurifolia	1 GPH	3		Muhlenbergia capillaris 'Royal Hite'	1 GPH	2	
Ulmus parvifolia 'Aster'	1 GPH	3		Rhaphiolepis umbellata 'Elegant Lator'	1 GPH	2	
				Ternstroemia cyanocephala 'Bl' TGG1'	1 GPH	2	
GROUND COVERS							
Species	Emitter Sz	Emitter QTY		Species	Emitter Sz	Emitter QTY	
Castilleja x grandiflora 'Sunset Orange'	5 GPH	1		Hemerocallis x 'Happy Returns'	5 GPH	1	
Hemerocallis x 'Happy Returns'	5 GPH	1		Liriodendron 'Big Blue'	5 GPH	1	



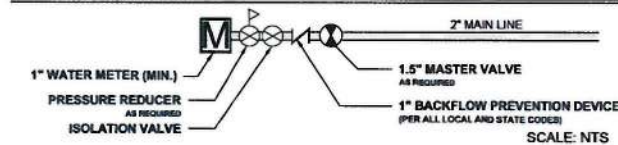
IRRIGATION PERFORMANCE PLAN



EXECUTIVE DIRECTOR APPROVAL

10-4-19 Date By [Signature]

P.O.C. POINT OF CONNECTION

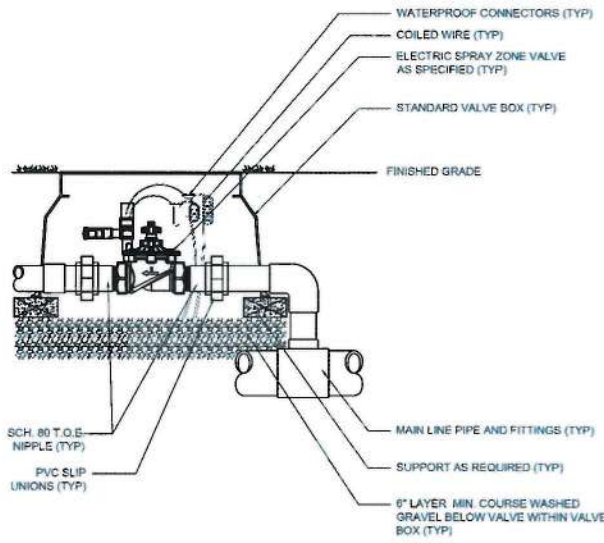


A NEW LOCATION FOR
CAPTAIN D'S
 7798 YOUREE DRIVE
 SHREVEPORT, LA 71105
TRIDENT HOLDINGS, LLC
 & **INVEST SQUARED, LLC**

Job Number:
Revisions:
Revisions per location and specifying irrigation pipes and heads 10-24-19

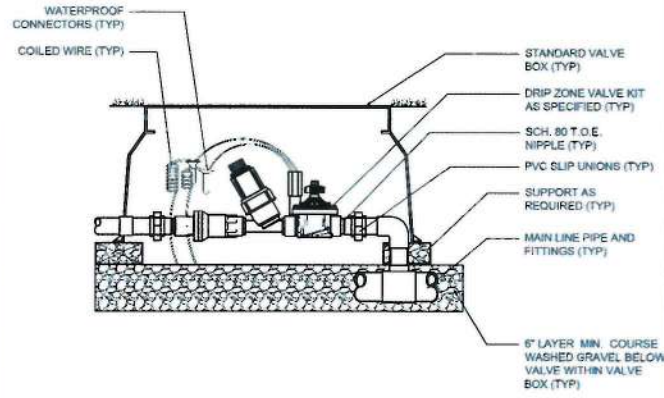
IRRIGATION PERFORMANCE PLAN
L-2.0

19-433-C



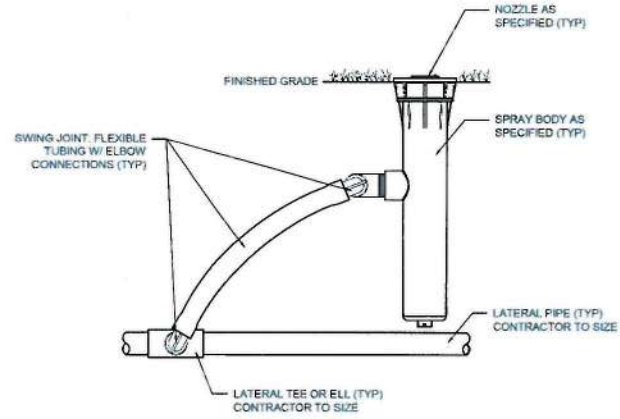
SPRAY ZONE VALVE BOX/ROUND

SCALE: NTS



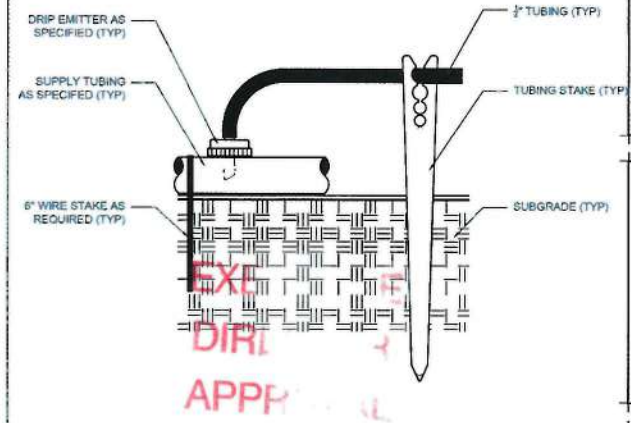
DRIP ZONE VALVE BOX/ROUND

SCALE: NTS



SPRAY BODY AND NOZZLE

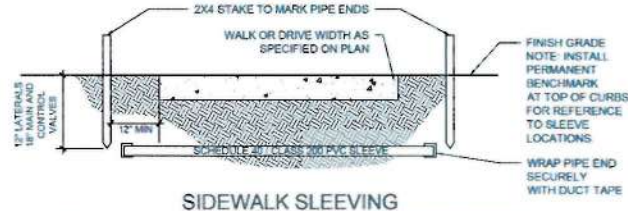
SCALE: NTS



DRIP EMITTER

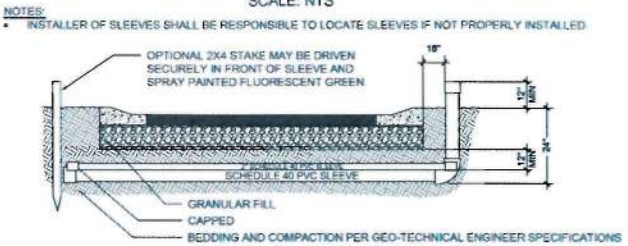
SCALE: NTS

11-4-19 Date By *ACA*



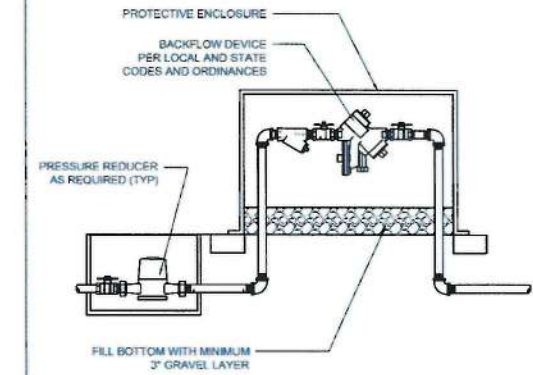
SIDEWALK SLEEVING

SCALE: NTS



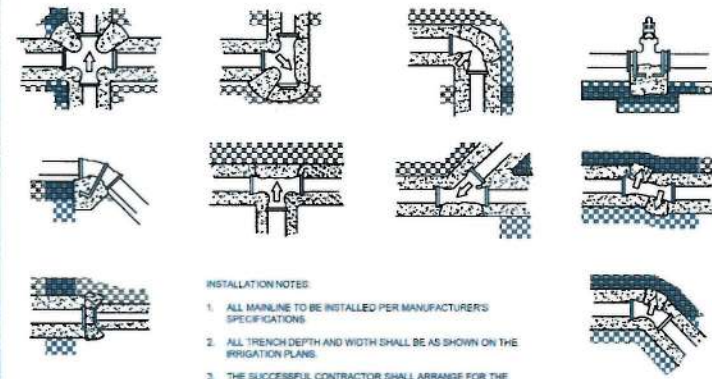
DRIVES, PARKING, AND ROAD SLEEVING

SCALE: NTS



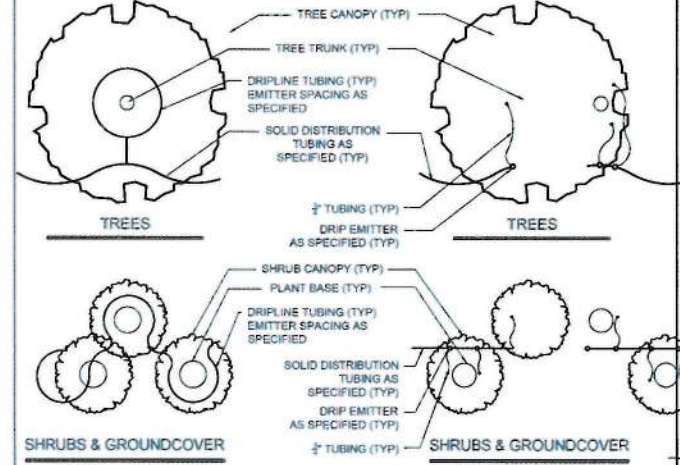
BACKFLOW PREVENTER

SCALE: NTS



THRUST BLOCK

SCALE: NTS



DRIPLINE SYSTEM

DRIP EMITTER SYSTEM

DRIP IRRIGATION LAYOUT

SCALE: NTS

PAVEMENT SLEEVING

SCALE: NTS

IRRIGATION NOTES

- SYSTEM IS DIAGRAMMATIC FOR GRAPHIC CLARITY. ALL MAINLINE PIPING ELECTRICAL VALVES AND WIRING ARE TO BE INSTALLED IN LANDSCAPE AREAS AND WITHIN PROPERTY BOUNDARIES. CONTRACTOR SHALL REFERENCE THE LANDSCAPE PLAN PRIOR TO THE INSTALLATION OF THE PIPING TO AVOID INTERFERENCE WITH PLANT MATERIALS EXISTING OR NEW.
- IRRIGATION DESIGN IS FROM THE POINT OF CONNECTION (POC) ONLY. THE DESIGN IS BASED ON GALLONS PER MINUTE (GPM) AND POUNDS PER SQUARE INCH (PSI) DESIGNED PER ASSUMED VALUES. CONTRACTOR TO VERIFY LOCATION AND VALUES.
- COORDINATE FINAL LOCATION OF ALL DRIP TUBING, SPRINKLERS, AND NOZZLES SELECTION WITH APPROVED LANDSCAPE. ALL PIPE AND VALVE LOCATIONS ARE DIAGRAMMATIC. CONTRACTOR SHALL FIELD VERIFY.
- ALL VALVES AND BOXES SHALL BE PLACED, WHERE POSSIBLE, IN PLANTED AREAS.
- ALL MAINLINES TO HAVE A MINIMUM OF 12" OF COVER (SCH 40 PVC PIPE).
- ALL LATERAL AND SUB-MAIN PIPE TO HAVE A MINIMUM OF 8" OF COVER. (CLASS 200 PVC PIPE).
- ALL PIPE TO BE INSTALLED PER MANUFACTURER'S SPECIFICATIONS. ALL THREADED JOINTS TO BE COATED WITH TEFLON TAPE OR LIQUID TEFLON.
- ALL LINES TO BE THOROUGHLY FLUSHED BEFORE INSTALLATION OF SPRINKLER HEADS. SPRINKLER AND RELATED EQUIPMENT TO BE INSTALLED AS PER DETAILS. ALL ELECTRICAL JOINTS TO BE MADE USING WATERPROOF CONNECTIONS AS SHOWN ON DETAILS.
- INSTALL ALL PIPING AS FAR FROM TREES AND ROOT BALLS AS POSSIBLE WHILE MAINTAINING THE SPRINKLER AND DRIP TUBE SPACING. ALL CONTROL WIRE SHALL BE OF GAUGE AS NECESSARY TO OPERATE AUTOMATIC VALVES, AND SHOULD BE SIZED ACCORDING TO RUNS.
- NO ROCKS, BOULDER, OR OTHER EXTRANEIOUS MATERIALS TO BE USED IN BACKFILLING OF TRENCH.
- ALL ROTORS AND SPRAY POP-UPS SHALL BE INSTALLED ON SWING PIPE OR SWING JOINT ASSEMBLY. ALL SWING PIPE ASSEMBLIES MINIMUM LENGTH TO BE 12" AND MAXIMUM LENGTH TO BE 24".
- ALL REMOTE CONTROL VALVES SHALL BE LOCATED IN VALVE BOXES OF APPROPRIATE SIZE, FLUSH WITH GRADE.
- ALL WIRE SPLICES OR CONNECTIONS SHALL BE MADE WITH WATERPROOF WIRE CONNECTIONS AND BE IN VALVE OR SPLICE BOXES. ALL CONTROL WIRING DOWNSTREAM OF THE CONTROLLER IS TO BE UL APPROVED FOR DIRECT BURY.
- NO ELECTRICAL CONNECTIONS SHALL BE MADE IN THE FIELD EXCEPT AT A VALVE CONTROL BOX OR ANOTHER VALVE BOX SPECIFICALLY FOR CONNECTIONS.
- CONTRACTOR SHALL PROVIDE EXPANSION COILS AT EACH WIRE CONNECTION IN VALVE BOX (WRAP AROUND 3/4" PIPE 12 TIMES).
- WIRE SHALL BE COLORED CODED; COMMON- WHITE, CONTROL-RED, OR MULTI-STRAND.
- CONTRACTOR SHALL VERIFY THAT ALL MANUFACTURERS' RECOMMENDED GROUND FAULT AND LIGHTNING PROTECTION IS INSTALLED.
- ALL MATERIAL TO BE SUPPLIED BY CONTRACTOR TO OWNER.
 - TWO WRENCHES FOR DISASSEMBLING AND ADJUSTING EACH TYPE OF SPRINKLER HEAD AND VALVE SUPPLIED.
 - TWO KEYS FOR EACH OF THE AUTOMATIC CONTROLLERS.
 - TWO QUICK COUPLER KEYS WITH MATCHING HOSE SWIVELS.
- ALL ABOVE GROUND WIRING, INSIDE AND OUTSIDE OF BUILDING, SHALL BE INSTALLED IN RIGID METALLIC CONDUIT FOR PROTECTION.
- IRRIGATION PIPE THAT CROSSES UNDER THE CONCRETE OR ASPHALT IN EXCESS OF 4' SHALL BE PLACED IN RIGID SLEEVING 2 TIMES THE PIPE'S OUTSIDE DIAMETER.
- FLOW PATTERN AND DISTANCE OF SPRAY SHALL BE REGULATED WITH THE USE OF ADJUSTMENT SCREWS) TO MINIMIZE OVERTHROW ONTO PAVED AREAS, HOWEVER, RADIUS SHALL NOT BE REDUCED MORE THAN MANUFACTURER AVAILABLE RANGE OR ALLOWED TO CAUSE LACK OF COVERAGE.
- CONTRACTOR SHALL INSTALL SPRINKLER EQUIPMENT 12" FROM FOUNDATIONS. ALSO INSTALL SPRINKLERS 4" FROM CURB OR WALKS.
- CONTRACTOR TO BE RESPONSIBLE FOR PROPER COVERAGE OF AREAS TO BE WATERED. I.E. ADJUST HEADS WITH INSUFFICIENT COVERAGE DUE TO BLOCKAGE BY EXISTING OR PROPOSED SITE FEATURES.
- CONTRACTOR TO REFER TO LANDSCAPE PLAN TO KEEP SPRINKLER EQUIPMENT AND ACCESSORY MATERIAL FROM INTERFERING WITH PROPER PLANTINGS.
- CONTRACTOR TO UTILIZE APPROPRIATE AUTOMATIC DRAIN DEVICE WHERE LOW HEAD DRAINAGE MAY OCCUR. ALL SPRINKLERS TO BE MOUNTED ON SWING JOINTS - REFER TO DETAILS. CONTRACTOR SHALL UTILIZE VALVE ID TAGS ON ALL REMOTE CONTROL VALVES.
- CONTRACTOR TO ADD EXTENSION RISER TO POP-UP HEADS WHEN NEEDED FOR PROPER COVERAGE.
- (HEAD-TO-HEAD).
- IN-LINE DRIP TUBING TO BE INSTALLED 6" FROM ALL MASONRY WALLS, PLANTER SIDEWALLS, AND CURBING, ON 18" CENTER TO CENTER ROW SPACING.
- FLUSH ALL LATERAL LINES BEFORE INSTALLING IN-LINE DRIP TUBING OR SPRINKLERS.
- STAKE IN-LINE DRIP TUBING AT MINIMUM 5' FOOT INTERVALS TO PREVENT MOVEMENT.
- IN-LINE DRIP TUBING TO BE INSTALLED 4" BELOW GRADE UNDER MULCH. NO DRIPPER LINE TUBING SHALL BE VISIBLE TO THE NAKED EYE. INSTALL AUTOMATIC FLUSH PORTS AT LOWEST POINT OF PVC EXHAUST HEADER, GENERALLY WHERE SHOWN ON THE DRAWINGS.
- INSTALL AIR VACUUM/RELIEF VALVES AT HIGH POINT OF IN-LINE DRIP TUBING, GENERALLY WHERE SHOWN ON THE DRAWINGS.
- SPRINKLERS FOR TURF SHALL HAVE 6" POP UP HEIGHT. ALL OTHER HEAD HEIGHTS AS REQUIRED FOR EVEN COVERAGE.
- CONTRACTOR SHALL TEST THE PRESSURE BEFORE STARTING THE WORK, REPORT ANY DEVIATION FROM PRESSURE REQUIRED TO OWNER'S REPRESENTATIVE BEFORE CONTINUING.
- INSTALL CONTROLLERS IN MECHANICAL ROOM, OR AS NOTED ON PLANS, AS DIRECTED BY OWNERS REPRESENTATIVE. HARD WIRE TO 120 VOLT DEDICATED 20 AMP CIRCUIT, BUILDING POWER SUPPLY BY USING LICENSED ELECTRICIAN. ROUTE ALL ZONE AND SPARE WIRES TO CONTROLLER VIA CONDUITS.
- INSTALL RAIN SENSORS ON OUTSIDE OF BUILDING WALL WHERE DIRECTED BY OWNERS REPRESENTATIVE OR PER PLAN. USE WIRELESS SYSTEM OR AS SPECIFIED ON PLANS.
- COORDINATE LOCATION OF ALL EXISTING AND FUTURE UTILITIES ON SITE. CONTACT PROPER AUTHORITIES AND UTILITY COMPANIES BEFORE START OF WORK.
- NO ALLOWANCES MADE FOR OBSTRUCTIONS NOT SHOWN ON PLAN. ALL NECESSARY FIELD ADJUSTMENTS TO BE MADE BY THE CONTRACTOR.
- CHANGES ARE NOT PERMITTED TO THE IRRIGATION PLAN OR MATERIALS WITHOUT CONSENT OF LANDSCAPE ARCHITECT.
- BIDDING CONTRACTORS SHOULD BECOME THOROUGHLY FAMILIAR WITH ALL FACETS OF THE PROPOSED IRRIGATION SYSTEM.
- PRIOR TO BID, IRRIGATION CONTRACTOR SHALL VERIFY RIGHT-OF-WAY AND BACKFLOW REQUIREMENTS NO LATER THAN 5 DAYS BEFORE THE BID SUBMITTALS CONTRACTOR SHALL NOTIFY LANDSCAPE ARCHITECT OF ANY CHANGES FROM PLANS OR SPECIFICATIONS.
- CONTRACTOR MUST SUBMIT SHOP DRAWINGS AS PER THE WRITTEN SPECIFICATIONS TO THE LANDSCAPE ARCHITECT FOR APPROVAL PRIOR TO ORDERING MATERIAL AND BEGINNING WORK. ALL EQUIPMENT NOT SPECIFIED IN THE LEGEND SHALL BE DETERMINED AND FURNISHED BY THE CONTRACTOR.
- ALL MATERIAL SUBSTITUTIONS WHICH VARY FROM THE SPECIFIED PRODUCTS MUST BE SUBMITTED TO THE LANDSCAPE ARCHITECT FOR APPROVAL AS PART OF THE SUBMITTAL PROCESS.
- ONCE APPROVED SUBMITTALS HAVE BEEN RETURNED TO THE CONTRACTOR, WORK MAY BEGIN. THE LANDSCAPE ARCHITECT MUST BE NOTIFIED A MINIMUM OF 7-WORKING DAYS IN ADVANCE OF INSTALLATION TO COORDINATE ON-SITE SUPERVISION AND ADMINISTRATION.
- IRRIGATION CONTRACTOR SHALL PROVIDE THE OWNER AND THE LANDSCAPE ARCHITECT WITH AS-BUILT DRAWING OF THE INSTALLED IRRIGATION SYSTEM BEFORE FINAL ACCEPTANCE.
- A 1-YEAR WARRANTY PERIOD SHALL BE PROVIDED FOR SYSTEM AFTER SUBSTANTIAL COMPLETION IS ACCEPTED.
- PRIOR TO BID, CONTRACTOR SHALL VERIFY THAT ALL MATERIALS, INSTALLATION PARAMETERS AND OPERATIONS CONFORM TO ALL APPLICABLE CODES AND ORDINANCES. NO LATER THAN FIVE DAYS BEFORE BID SUBMITTALS CONTRACTOR SHALL NOTIFY LANDSCAPE ARCHITECT/DESIGNER OF ANY CHANGES REQUIRED DUE TO CURRENT CODE OR ORDINANCE DISCREPANCIES. IF CONTRACTOR DOES NOT COMPLY TO THIS NOTIFICATION, THE CONTRACTOR SHALL BE RESPONSIBLE FOR ALL NECESSARY INSTALLATION CHANGE AND REDESIGN COST FOR NON-COMPLIANCE.
- IRRIGATION CONTRACTOR WILL ARRANGE INSPECTIONS REQUIRED BY LOCAL AGENCIES AND ORDINANCES DURING THE COURSE OF CONSTRUCTION AS REQUIRED. ALL WIRING TO BE PER LOCAL CODE. BACKFLOW PREVENTION ALSO TO BE AS PER LOCAL CODE.
- IRRIGATION CONTRACTOR TO BE RESPONSIBLE FOR FIRST TIME BACKFLOW TESTING AS REQUIRED BY LOCAL MUNICIPALITIES AND/OR LOCAL CODES.
- ANY DISCREPANCY BETWEEN THIS SHEET AND OTHER IN THIS SET MUST BE REFERRED TO THE LANDSCAPE ARCHITECT BY THE CONTRACTOR FOR CLARIFICATION BEFORE PROCEEDING WITH THE WORK.

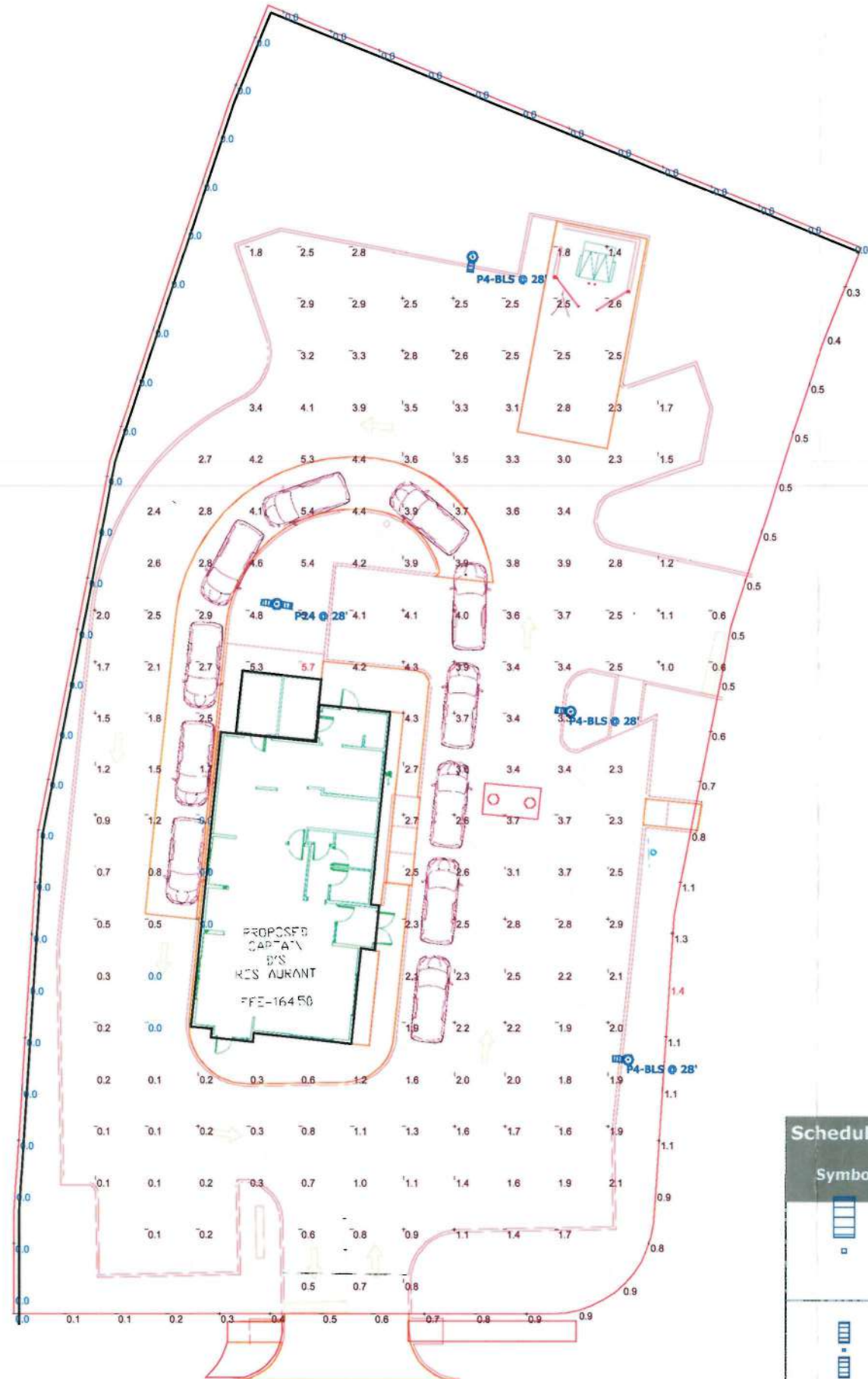
A NEW LOCATION FOR
CAPTAIN D'S
 7798 YOUREE DRIVE
 SHREVEPORT, LA 71105
TRIDENT HOLDINGS, LLC
 & **INVEST SQUARED, LLC**



Job Number:
 Revisions:

IRRIGATION DETAILS
 L-2.1

19-433-C



Plan View
Scale - 1" = 16'

**EXECUTIVE
DIRECTOR
APPROVAL**

[Signature]
By
11-4-19
Date

Statistics						
Description	Symbol	Avg	Max	Min	Max/Min	Avg/Min
Parking Lot Light Levels	+	2.3 fc	5.7 fc	0.0 fc	N/A	N/A
Property Line Light Levels	+	0.3 fc	1.4 fc	0.0 fc	N/A	N/A

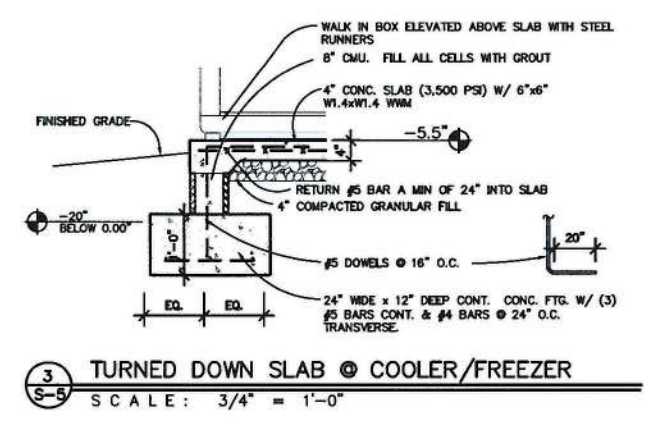
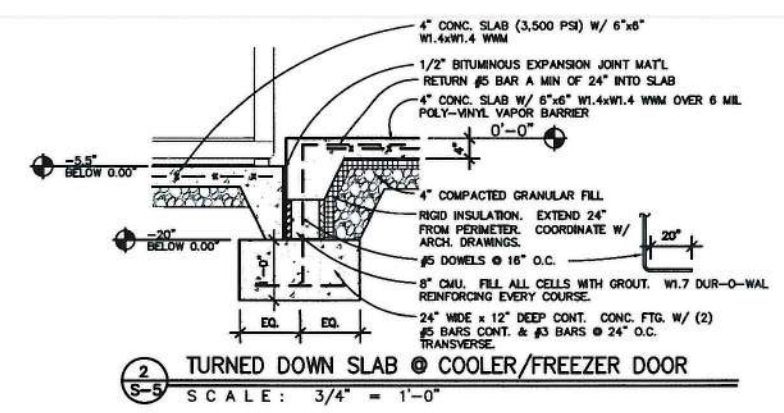
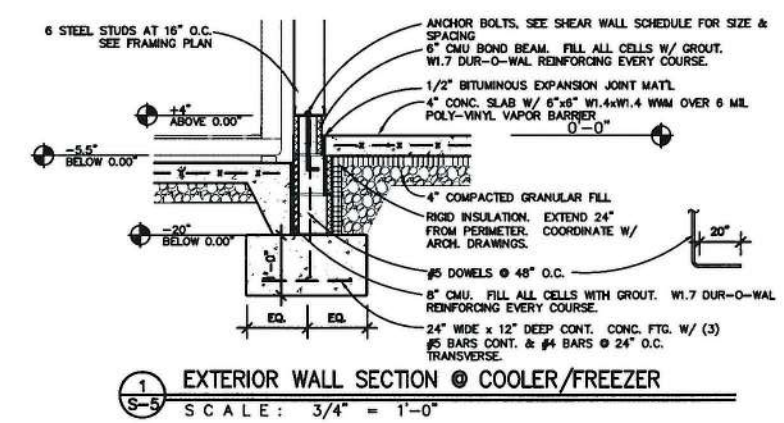
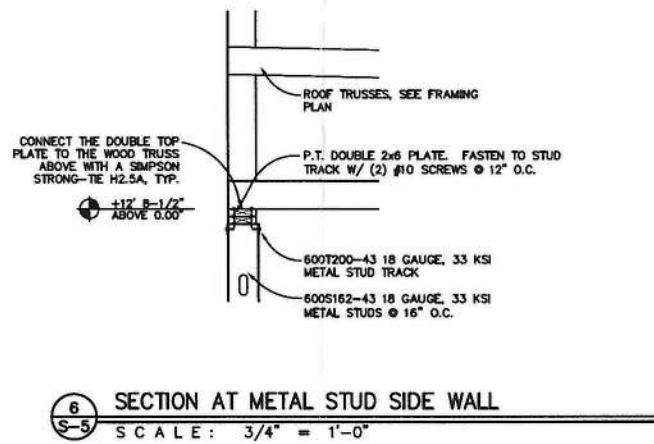
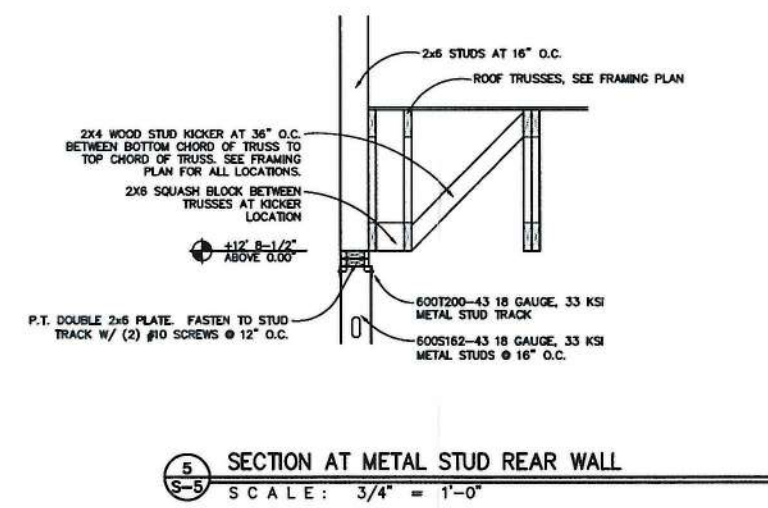
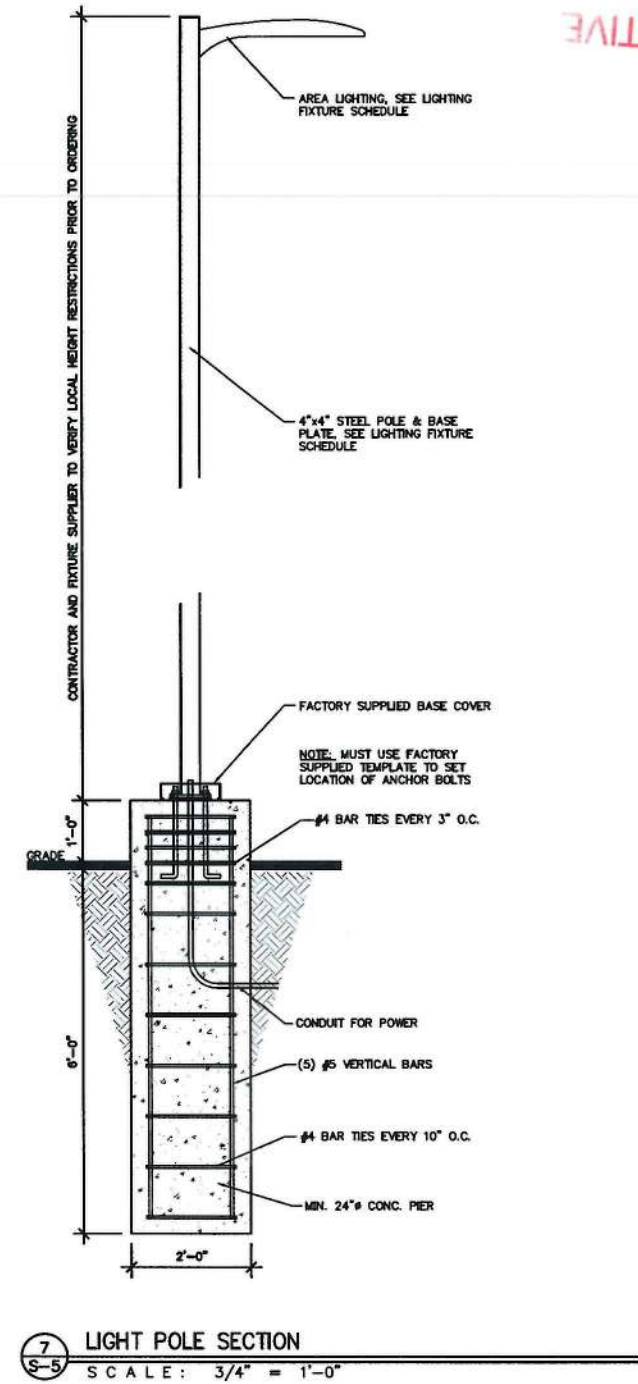
Schedule						
Symbol	Label	Qty	Catalog Number	Description	Lamp	Wattage
	P4-BLS	3	PRV-A40-D-UNV-T4-BZ-HSS	Single Head Eaton Prevail Series LED Area Unit w/Type T4 Distribution (25ft. Pole Height w/3ft. Base) House Side Shield	143w of LED per Head (Type A40 Power Input)	143
	P24	1	PRV-A40-D-UNV-T4-BZ	Double Head Eaton Prevail Series LED Area Unit w/Type T4 Distribution (25ft. Pole Height w/3ft. Base)	143w of LED per Head (Type A40 Power Input)	286

**Captain D's - Shreveport, LA
Parking Lot Lighting Layout**

Designer
Adam Carrier
Date
10/22/2019
Scale
Not to Scale
Drawing No.
Summary

19-433-C

By *B. Clark* Date 11-4-18
 EXECUTIVE DIRECTOR APPROVAL



4 NOT USED



A NEW LOCATION FOR
CAPTAIN D'S
 7798 YOUNG DRIVE
 SHREVEPORT, LA 71105
TRIDENT HOLDINGS, LLC
 & INVEST SQUARED, LLC



Job Number:
 Revisions:

S-5
 STRUCTURAL DETAILS

19-433-C