

EAST 70th STREET

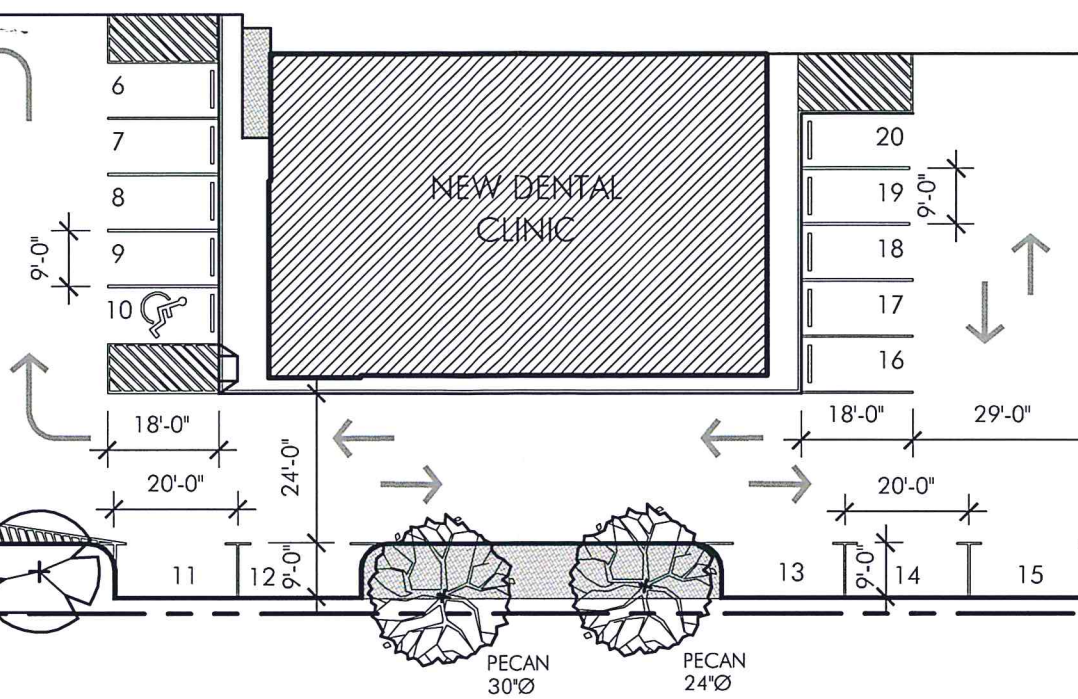
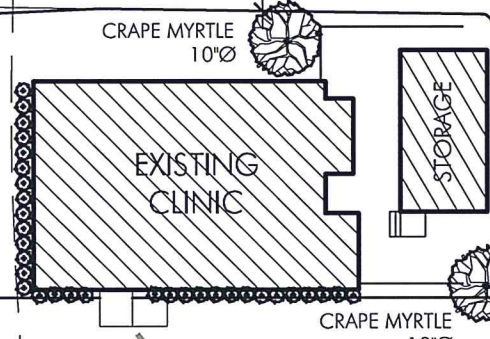
425.14'

23.42'

80.0'

EXECUTIVE
DIRECTOR
APPROVAL

5/24/19
Date By



100' CADDIS LEVEL DISTRICT EASEMENT

SITE OWNERSHIP:
PARY PROPERTIES, LLC
ARN: 171316-001-0168-00
DEED: DOC #2400278

CURRENT ZONING - C-1
TOTAL SITE AREA - 41,008.753 SQ FT
PROPOSED BUSINESS DEVELOPMENT - DENTAL OFFICE
EXISTING CONSTRUCTION - 1,702 SQ FT
NEW CONSTRUCTION - 4,142 SQ FT

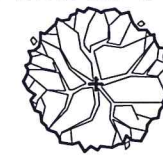
PARKING REQUIREMENTS FOR NEW CONSTRUCTION
20 PARKING SPACES REQUIRED
20 PARKING SPACES PROVIDED
1 ACCESSIBLE PARKING SPACES REQUIRED
1 ACCESSIBLE PARKING SPACES PROVIDED

LANDSCAPING REQUIREMENTS

TOTAL TREE REQUIRED
SHADE TREES - 3
ORNAMENTAL TREES - 6

TREE PROVIDED
SHADE TREES - 3
ORNAMENTAL TREES - 6

LANDSCAPING LEGEND



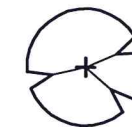
EXISTING TREE
SEE PLAN FOR TYPE & SIZE



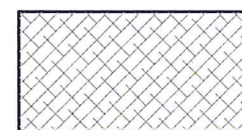
EXISTING SHRUBS
BOXWOOD HEDGE



NEW ORNAMENTAL TREE
CRAPE MYRTLE



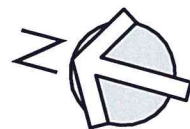
NEW SHADE TREE
RIVER BIRCH



PLANTING BED
VARIOUS PLANTS INCLUDING:
Liriope - for edging
Indian Hawthorn - shrub
Blue Pacific Juniper - ground cover



LAWN
Common Bermuda



SITE PLAN

SCALE: 1" = 30'-0"



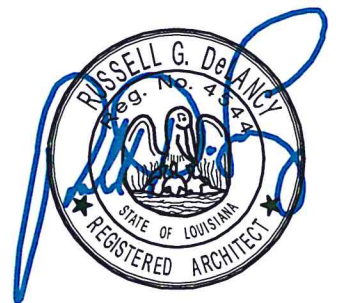
GRAPHIC SCALE WILL BE FULL SCALE WHEN DRAWING IS PRINTED AT THE CORRECT SCALE

SMILE DENTAL CENTER
2015 E. 70th STREET
SHREVEPORT, LOUISIANA 71105

rgd

Architecture
A Professional Architectural Corporation

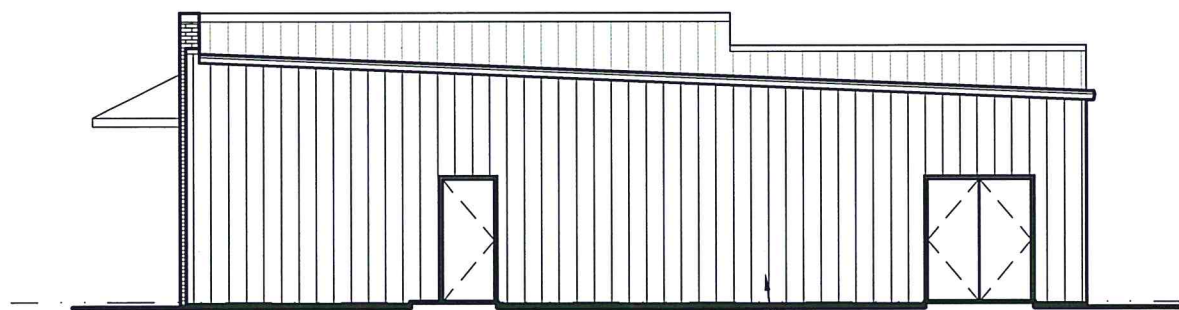
P O Box 8010
Bossier City, LA 71113
Phone (318) 560-6168
rgdaia@bellsouth.net



MAY 6, 2019
REVISED MAY 13, 2019

A1.0

19-310-C



SOUTH ELEVATION

FLAT METAL WALL PANEL

LOW EAVE HEIGHT
12'-0"



NORTH ELEVATION

BUILDING SIGNAGE BY OWNER

PRE-FINISHED PARAPET CAP

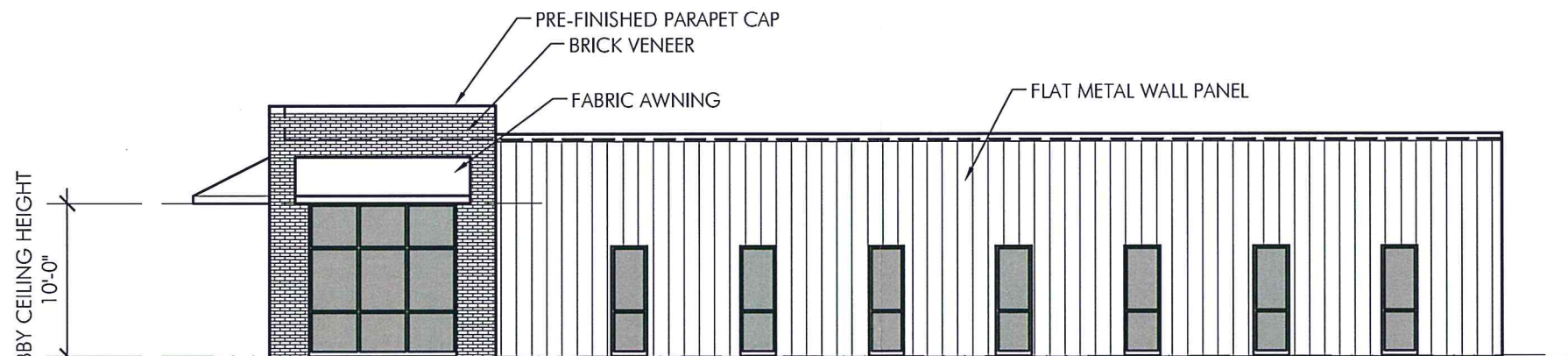
BRICK VENEER

FABRIC AWNING

16'-6"

FLAT METAL WALL PANEL SCHEDULED DOOR

SCHEDULED DOOR SCHEDULED STOREFRONT



EAST ELEVATION

PRE-FINISHED PARAPET CAP

BRICK VENEER

FABRIC AWNING

FLAT METAL WALL PANEL

LOBBY CEILING HEIGHT
10'-0"

EXECUTIVE
DIRECTOR
APPROVAL

5/24/19
Date By

rgd

Architecture

A Professional Architectural Corporation

P O Box 8010
Bossier City, LA 71113
Phone (318) 560-6168
rgdaia@bellsouth.net

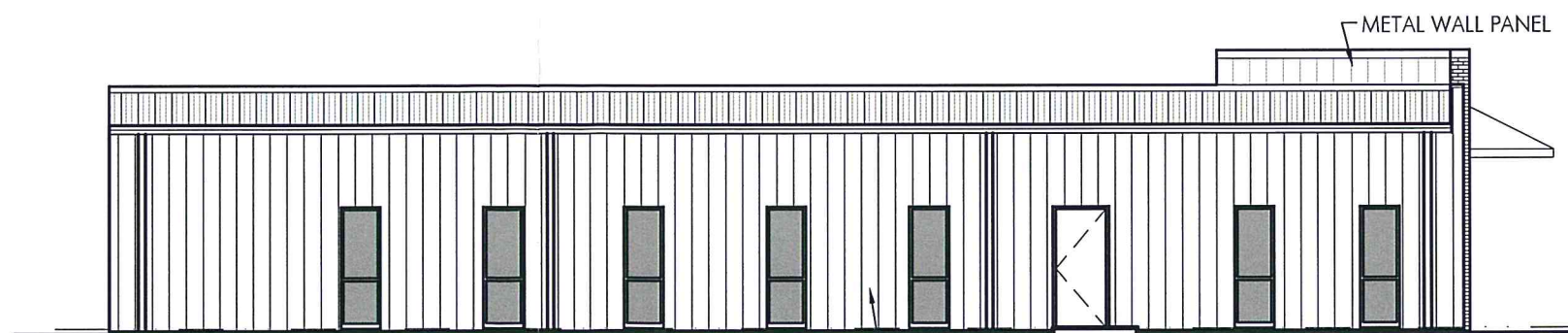
BUILDING ELEVATIONS

SCALE: 3/32" = 1'-0"



GRAPHIC SCALE WILL BE FULL SCALE WHEN DRAWING IS PRINTED AT THE CORRECT SCALE

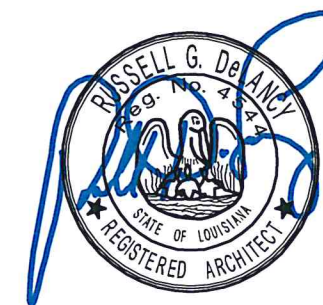
SMILE DENTAL CENTER
2015 E. 70th STREET
SHREVEPORT, LOUISIANA 71105



WEST ELEVATION

METAL WALL PANEL

FLAT METAL WALL PANEL



MAY 6, 2019

A2.0

19-310-C