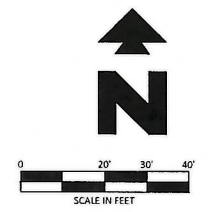


Vicinity Map
Not to Scale

SITE BENCHMARK	
Benchmark #1: 5/8" rebar with CEI cap N: 709721.54' E: 2904270.41' Elev.: 76.99'	
Benchmark #2: 5/8" rebar with CEI cap N: 705517.75' E: 2904286.95' Elev.: 76.62'	



EXISTING LEGEND

---	Boundary Line	⊙	Sewer Manhole (SMH)
---	Adjoining Boundary Line	⊙	Utility Pole
---	Easement Line	⊙	Electric Riser
---	Gas Line	⊙	Telephone Riser
---	FOC	⊙	Found Chiseled "X"
---	Overhead Electric Line	⊙	Traffic Sign (Type of Sign)
---	D/E	⊙	Irrigation Control Box
---	Sanitary Sewer Line	⊙	Light Pole (1 Lamp)
---	Storm Drainage Pipe	⊙	Light Pole (2 Lamps)
---	Water Line	⊙	Light Pole (3 Lamps)
---	Flood Hazard Line	⊙	Electric Vault
⊙	Benchmark (BM)	⊙	Traffic Light (1 Lamp)
⊙	Set 5/8" Rebar "LS#4816"	⊙	Bollard / Guard Post
⊙	Found Nail (As Noted)	⊙	Tree (Deciduous)
⊙	Set Mag Nail w/Washer "LS#4816"	⊙	Record Bearing & Distance per Plat Bk. 2300, Pg. 189
⊙	Found Pipe (As Noted)	⊙	FEMA Flood Zone "AE"
⊙	Electric Meter	⊙	Parking Count
⊙	Water Meter		
⊙	Grate Inlet (GI)		
⊙	Fire Hydrant		

PROPOSED

---	PROPERTY LINE/RIGHT OF WAY LINE
---	CONCRETE CURB AND GUTTER. SEE DETAIL 01A/01B.
⊙	BUILDING CONTROL POINT

GENERAL SITE NOTES

- ALL DIMENSIONS SHOWN ARE TO THE FACE OF CURB UNLESS OTHERWISE NOTED.
- UNLESS OTHERWISE SHOWN, CALLED OUT OR SPECIFIED HEREON OR WITHIN THE SPECIFICATIONS: ALL CURB AND GUTTER ADJACENT TO ASPHALT PAVING SHALL BE INSTALLED PER DETAIL 01A. ALL CURBING ADJACENT TO CONCRETE PAVING SHALL BE INSTALLED PER DETAIL 01B. PAVEMENT SHALL BE INSTALLED IN ACCORDANCE WITH DETAIL 03A OVER THE ENTIRE PARKING LOT AREA AND ALL APPROACH DRIVES. ALL PARKING LOT STRIPING INCLUDING ACCESSIBLE AND VAN ACCESSIBLE SPACES SHALL BE PAINTED PER DETAIL 04.

SITE NOTES

- 08B OVERHEAD CANOPY - (PER ARCH PLANS)
- 70A KIOSK BUILDING PER ARCH PLANS
- 70B CANOPY COLUMN PER ARCH PLANS
- 70C UNDERGROUND STORAGE TANKS PER ARCH. PLANS
- 70D 6" BOLLARDS PER ARCH PLANS
- 70E VENT RISERS PER ARCH PLANS
- 70F CONCRETE PAD FOR AIR AND WATER
- 70G 42" U SHAPE BOLLARD PER ARCH PLANS
- 70H FUEL DISPENSER PER ARCH PLANS
- 70K MERCHANDISER (PER ARCHITECTURAL PLANS)
- 70I ELECTRIC TRANSFORMER CONCRETE PAD AND BOLLARDS PROVIDED BY DEVELOPER
- 70L KROGER LOGO & LETTERING PER ARCH PLAN
- 70M FUEL LOGO & LETTERING PER ARCH PLAN
- 70N FUEL LOGO PER ARCH PLANS
- 70Q CENTER OF CANOPY COLUMN
- 70R ACCESSIBLE PEDESTRIAN CROSSING-4" WIDE PAINTED WHITE STRIPES, 2' O.C. @ 45'
- 70S EDGE OF NEW PAVEMENT

EXECUTIVE DIRECTOR APPROVAL

6-24-2020 *AC*
Date By

APPLICANT INFORMATION:

ENGINEER/APPLICANT:
CEI ENGINEERING
3030 IBI FREEWAY, SUITE 100
DALLAS, TEXAS 75234
CONTACT: BRANDON WALDRUM
479-254-1475

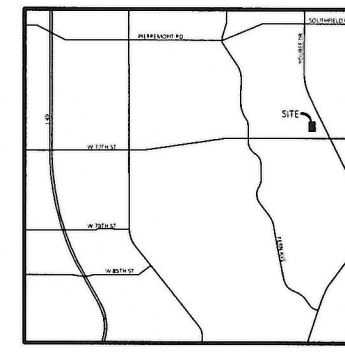
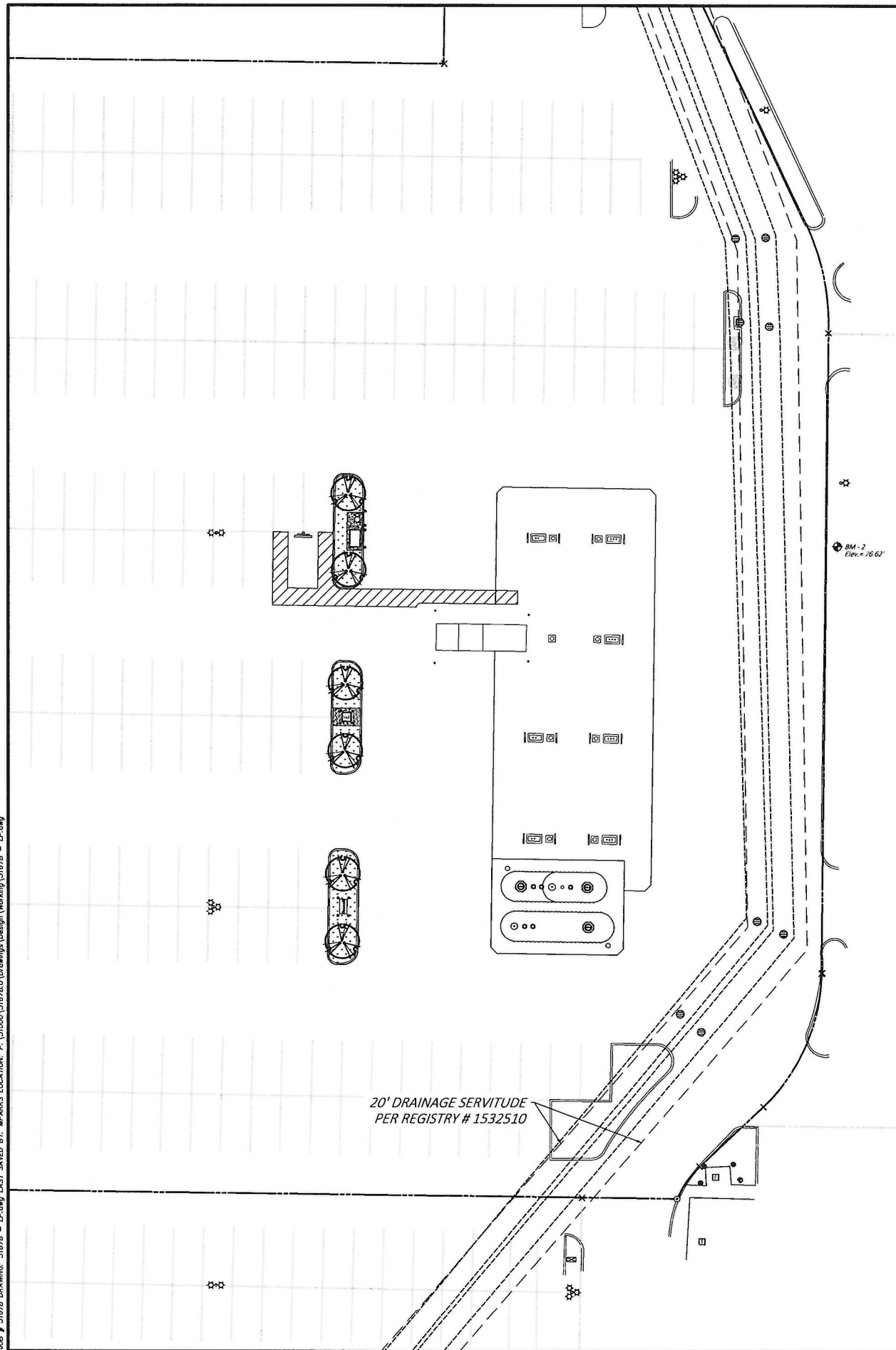
OWNER/DEVELOPER:
THE KROGER CO.
751 FREEPORT PARKWAY,
COPPELL, TEXAS 75019

31678	6/11/2020	DPOR	BMW	MMP	MMP
CEI PROJECT NO.	INITIAL DATE	DPOR	PM	DES	DRW
3030 IBI Freeway, Suite 100 (972) 488-3737 Dallas, TX 75234 FAX (972) 488-6732					
KROGER FUEL 6852 YOURS DR SHREVEPORT LA					
SITE PLAN				REV DATE 6/11/2020	SHEET NO. C1 OF ##

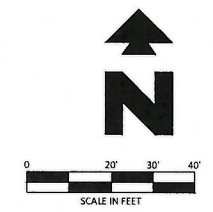
JOB # 31678 DRAWING: 31678 - SP.dwg LAST SAVED BY: MPARKS LOCATION: F:\31000\31678\Drawings\Design\Working\31678 - SP.dwg

20-71-C

JOB # 31678 DRAWING: 31678 - LP.dwg LAST SAVED BY: MPARKS LOCATION: P:\31000\31678\0\Drawings\Design\Working\31678 - LP.dwg



Vicinity Map
Not to Scale



Know what's below.
Call before you dig.

EXISTING LEGEND

---	Boundary Line	⊕	Sewer Manhole (SMH)
---	Adjoining Boundary Line	⊕	Utility Pole
---	Easement Line	⊕	Electric Riser
---	Gas Line	⊕	Telephone Riser
---	FOC	⊕	Found Chiseled "X"
---	OHE	⊕	Traffic Sign (Type of Sign)
---	Sanitary Sewer Line	⊕	Irrigation Control Box
---	Storm Drainage Pipe	⊕	Light Pole (1 Lamp)
---	Water Line	⊕	Light Pole (2 Lamps)
---	Flood Hazard Line	⊕	Light Pole (3 Lamps)
⊕	Benchmark (BM)	⊕	Electric Vault
⊕	Set 5/8" Rebar "LS#4816"	⊕	Traffic Light (1 Lamp)
⊕	Found Nail (As Noted)	⊕	Bollard / Guard Post
⊕	Set Mag Nail w/Washer "LS#4816"	⊕	Tree (Deciduous)
⊕	Found Pipe (As noted)	⊕	Record Bearing & Distance per Plat Bl. 2300, Pg. 189
⊕	Electric Meter	⊕	FEMA Flood Zone "AE"
⊕	Water Meter	⊕	Parking Court
⊕	Grate Inlet (GI)		
⊕	Fire Hydrant		

PROPOSED

---	BOUNDARY LINE
---	RIGHT OF WAY LINE
---	STORM DRAIN
⊕	TYPICAL PLANTING WITH QUANTITY AND KEY (SEE PLANT LIST)

PLANT SCHEDULE

TREES	QTY	BOTANICAL / COMMON NAME	CONT	CAI	DETAIL
	6	LAGERSTROEMIA X NATCHEZ / WHITE CRAPE MYRTLE MULTI-TRUNK	B & B	2"CAI	SOA
GROUND COVERS	QTY	BOTANICAL / COMMON NAME	TYPE	DETAIL	SPACING
	847 SF	CYNODON DACTYLON / BERMUDA GRASS	SOD		

EXECUTIVE
DIRECTOR
APPROVAL

6-24-2020
Date By *[Signature]*

20' DRAINAGE SERVITUDE
PER REGISTRY # 1532510

APPLICANT INFORMATION:

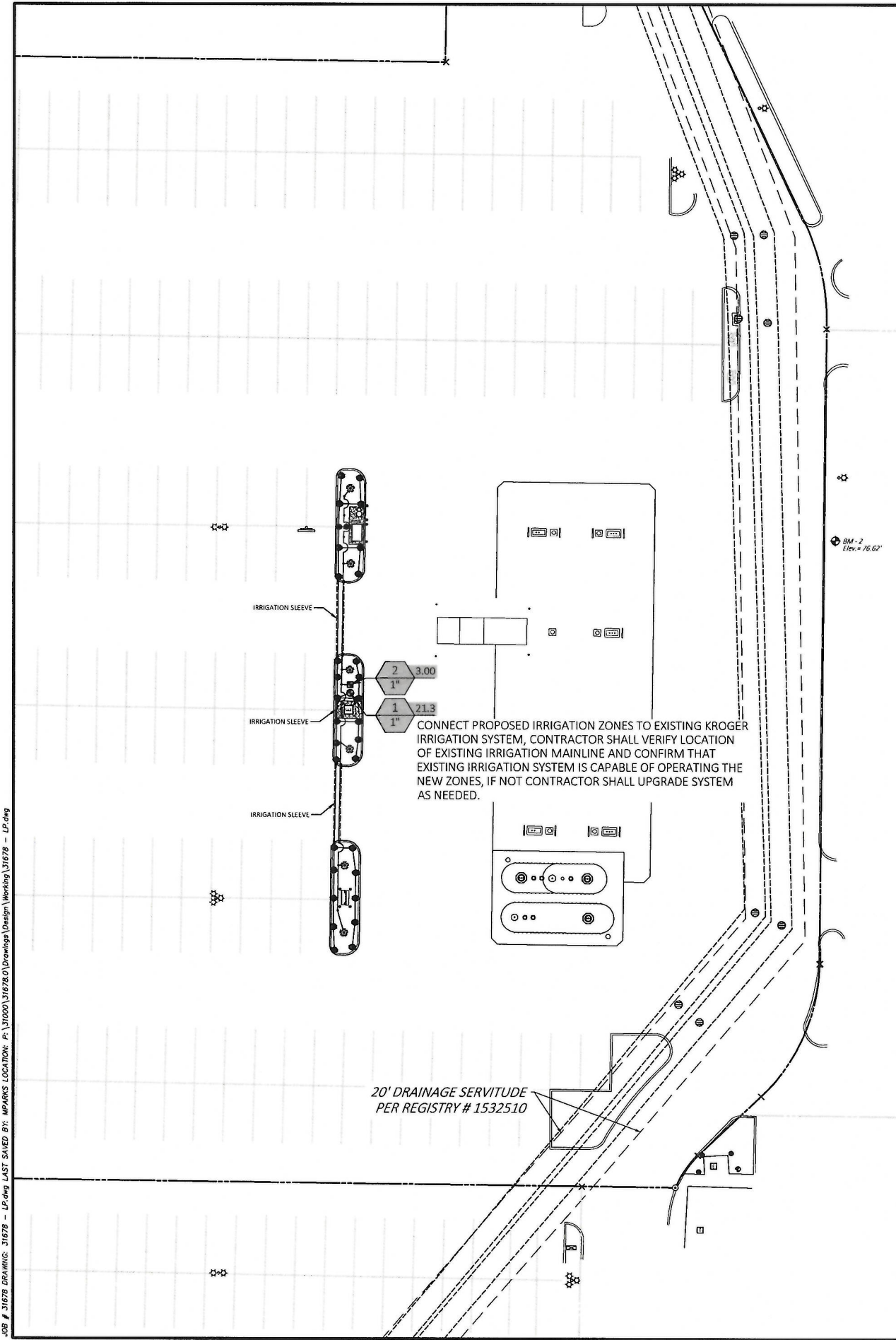
ENGINEER/APPLICANT:
CEI ENGINEERING
3030 LBI FREEWAY, SUITE 100
DALLAS, TEXAS 75234
CONTACT: BRANDON WALDRUM
479-254-1475

OWNER/DEVELOPER:
THE KROGER CO.
751 FREEPORT PARKWAY,
COPELL, TEXAS 75019



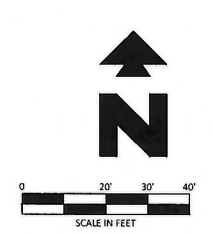
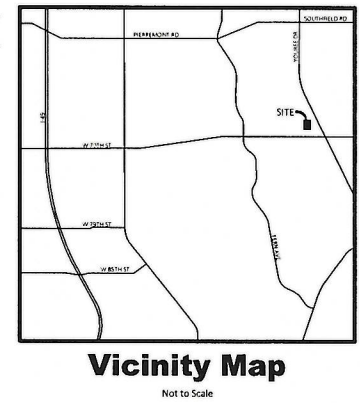
31678	6/11/2020	DPOR	BMW	MMP	MMP
CEI PROJECT NO.	INITIAL DATE	DPOR	PM	DES	DRW
CEI Engineering Associates, Inc.					
ENGINEERS • PLANNERS • SURVEYORS LANDSCAPE ARCHITECTS • ENVIRONMENTAL SCIENTISTS					
3030 LBI Freeway, Suite 100 Dallas, TX 75234 (972)488-3737 FAX (972)488-6732					
KROGER FUEL					
6852 YOURS DR SMREVEPORT LA					
LANDSCAPE PLAN				REV DATE 6/11/2020 REV-D	SHEET NO. L1

20-71-C



GENERAL IRRIGATION NOTES

1. THE CONTRACTOR IS RESPONSIBLE FOR OBTAINING A COPY OF THE PROJECT SPECIFICATIONS PRIOR TO BIDDING. THE PROJECT SPECIFICATIONS ARE A PART OF THESE PLANS AND SHALL BE CONSULTED BY THE IRRIGATION CONTRACTOR. THE CONTRACTOR IS RESPONSIBLE FOR IMPLEMENTING WORK AS SPECIFIED IN THE PROJECT SPECIFICATIONS AND ON THE PLANS.
2. CONTRACTOR SHALL VERIFY ALL DIMENSIONS, ELEVATIONS, QUANTITIES, AND UTILITY LOCATIONS PRIOR TO BEGINNING WORK.
3. CONTRACTOR SHALL NOTIFY LANDSCAPE ARCHITECT OR LICENSED IRRIGATOR OF ANY DISCREPANCIES IN PLANS OR SPECIFICATIONS PRIOR TO BEGINNING OR CONTINUING WORK.
4. THE CONTRACTOR SHALL MAKE NO SUBSTITUTIONS, DELETIONS, OR ADDITIONS TO THIS PLAN WITHOUT APPROVAL OF THE LANDSCAPE ARCHITECT OR LICENSED IRRIGATOR.
5. ALL CONSTRUCTION SHALL CONFORM TO CITY, COUNTY, STATE, AND FEDERAL REQUIREMENTS. IT SHALL BE THE RESPONSIBILITY OF THE IRRIGATION CONTRACTOR TO ENSURE THAT ALL IRRIGATION EQUIPMENT MEETS GOVERNMENT REGULATIONS. CONTRACTOR SHALL ALSO BE RESPONSIBLE FOR OBTAINING ANY NECESSARY PERMITS OR APPROVALS.
6. CONTRACTOR IS TO VERIFY ACTUAL AVAILABLE WATER PRESSURE BEFORE BEGINNING INSTALLATION. CONTRACTOR SHALL NOTIFY LANDSCAPE ARCHITECT OR LICENSED IRRIGATOR IF AVAILABLE WATER PRESSURE EXCEEDS 5 PSI HIGHER OR LOWER THAN THE DESIGN WATER PRESSURE OF 60 PSI.
7. IRRIGATION SYSTEMS CONNECTED TO POTABLE WATER SUPPLY, SHALL HAVE A BACKFLOW PREVENTER INSTALLED PER LOCAL REQUIREMENTS.
8. ANY EXISTING TREES TO REMAIN ARE TO BE PROTECTED FROM DAMAGE. DO NOT TRENCH OR EXCAVATE WITHIN THE CRITICAL ROOT ZONE OF ANY TREE.
9. SUPPLY LINE AND METER TO BE PROVIDED BY GENERAL CONTRACTOR. BACKFLOW PREVENTER TO BE PROVIDED BY IRRIGATION CONTRACTOR. IRRIGATION CONTRACTOR'S POINT OF CONNECTION TO BEGIN AFTER THE IRRIGATION WATER METER.
10. IRRIGATION CONTRACTOR SHALL REVIEW WINTERIZATION PROCEDURES FOR IRRIGATION SYSTEM WITH OWNERS REPRESENTATIVE.
11. IRRIGATION CONTRACTOR IS RESPONSIBLE FOR INSTALLING MANUAL DRAIN VALVES AT LOWEST POSSIBLE ELEVATION ON IRRIGATION MAIN SO AS TO PROVIDE POSITIVE DRAINAGE OF IRRIGATION MAIN DURING WINTER MONTHS, OR PROVIDE BLOWOUT ASSEMBLY.
12. ALL LATERAL LINES SHALL BE EQUIPPED WITH AUTOMATIC DRAIN VALVES AT LOW POINTS.
13. IRRIGATION CONTRACTOR SHALL COORDINATE CONTROLLER LOCATION WITH GENERAL CONTRACTOR. GENERAL CONTRACTOR SHALL PROVIDE (2) 1" ELECTRICAL CONDUITS FOR IRRIGATION CONTRACTOR'S POWER/DATA CONNECTION TO CONTROLLER. SEE ARCHITECTURAL ELECTRICAL PLAN FOR ELECTRICAL CONNECTION TO THE IRRIGATION CONTROLLER. IRRIGATION CONTRACTOR SHALL COORDINATE CONSTRUCTION OF IRRIGATION SYSTEM WITH GENERAL CONTRACTOR AND LANDSCAPE CONTRACTOR PRIOR TO COMMENCEMENT OF CONSTRUCTION.
14. THE CONTRACTOR IS SPECIFICALLY CAUTIONED THAT THE LOCATION AND/OR ELEVATION OF EXISTING UTILITIES AS SHOWN ON THESE PLANS IS BASED ON RECORDS OF THE VARIOUS UTILITY COMPANIES, AND WHERE POSSIBLE, MEASUREMENTS TAKEN IN THE FIELD. THE INFORMATION IS NOT TO BE RELIED ON AS BEING EXACT OR COMPLETE. THE CONTRACTOR MUST CALL THE APPROPRIATE UTILITY COMPANIES AT LEAST 72 HOURS BEFORE ANY EXCAVATION TO REQUEST EXACT FIELD LOCATION OF UTILITIES. IT SHALL BE THE RESPONSIBILITY OF THE CONTRACTOR TO RELOCATE ALL EXISTING UTILITIES WHICH CONFLICT WITH THE PROPOSED IMPROVEMENTS SHOWN ON THE PLANS.
15. ALL BELOW GRADE LOW VOLTAGE WIRING CONNECTIONS SHALL BE INSTALLED PER WIRE CONNECTION DETAIL.
16. DO NOT INSTALL IRRIGATION AT PYLON / MONUMENT SIGN LOCATION UNTIL SIGN HAS BEEN INSTALLED.
17. LOCATION FOR IRRIGATION SYSTEM AS SHOWN IS FOR DRAWING PURPOSES ONLY. UNSLEEVED PIPES MAY BE SHOWN IN PAVEMENT AREAS FOR CLARITY ONLY. INSTALL THESE PIPES IN ADJACENT LANDSCAPE AREAS WHERE NECESSARY. CONTRACTOR SHALL VERIFY THE EXACT LOCATION IN FIELD PRIOR TO THE COMMENCEMENT OF CONSTRUCTION OF PROPOSED IRRIGATION SYSTEM. ALL PROPOSED IRRIGATION LINES AND EQUIPMENT SHALL BE INSTALLED WITHIN THE BOUNDARIES OF THE PROJECT SITE. CONTRACTOR SHALL NOTIFY LANDSCAPE ARCHITECT OR LICENSED IRRIGATOR IF THE DESIGN AS SHOWN IS NOT ACHIEVABLE.
18. MINIMUM COVER FROM TOP OF PIPING TO FINISHED GRADE SHALL BE AS PER DETAIL 64A.
19. IRRIGATION CONTRACTOR SHALL COORDINATE IRRIGATION INSTALLATION WITH PLANTING PLAN AND SITE CONDITIONS TO PROVIDE COMPLETE COVERAGE WITH MINIMUM OVERSPRAY. THE IRRIGATION CONTRACTOR SHALL MAKE MINOR ADJUSTMENTS TO ENSURE PROPER COVERAGE AT NO ADDITIONAL COST TO THE OWNER.
20. VALVE BOXES SHALL BE INSTALLED FLUSH WITH GRADE, SUPPORTED BY BRICKS IF NEEDED, WITH 3" OF CLEAN PEA GRAVEL LOCATED BELOW THE VALVE.
21. ALL MAIN LINE PIPING, NON-PRESSURE PIPING AND CONTROL WIRE SLEEVING SHALL BE INSTALLED IN SEPARATE SLEEVES. ALL LATERAL LINE PIPING UNDER PAVING SHALL BE PVC SCHEDULE 40 AND SHALL BE INSTALLED PRIOR TO ANY HARDSCAPE MATERIAL. IRRIGATION CONTRACTOR TO PROVIDE SLEEVES BETWEEN 12" AND 15" BELOW GRADE AT ALL DRIVE ENTRANCES AND SIDEWALKS. MAINLINE SLEEVE SIZE SHALL BE A MINIMUM OF TWICE (2X) THE DIAMETER OF THE PIPE TO BE SLEEVED. CONTROL WIRE SLEEVES SHALL BE OF SUFFICIENT SIZE FOR THE REQUIRED NUMBER OF WIRES.
22. IT IS THE RESPONSIBILITY OF THE IRRIGATION CONTRACTOR TO FAMILIARIZE HIMSELF WITH ALL GRADE DIFFERENCES, LOCATION OF FENCES, RETAINING WALLS, AND UTILITIES. THE IRRIGATION CONTRACTOR SHALL REPAIR OR REPLACE ALL ITEMS DAMAGED BY HIS WORK. HE SHALL COORDINATE HIS WORK WITH OTHER CONTRACTORS FOR THE LOCATION AND INSTALLATION OF PIPE SLEEVES AND LATERALS THROUGH WALLS, UNDER ROADWAYS AND PAVING AND TRIMING, ETC. REFER TO CIVIL ENGINEERING PLANS FOR GRADING, METHODS OF DRAINAGE, IRRIGATION METERS, AND BACKFLOW PREVENTION DEVICE LOCATION.
23. ALL IRRIGATION EQUIPMENT NOT OTHERWISE DETAILED OR SPECIFIED, SHALL BE INSTALLED AS PER MANUFACTURER'S RECOMMENDATIONS, DETAILS AND SPECIFICATIONS. ACCEPTABLE MANUFACTURERS INCLUDE RAINBIRD, HUNTER, TORO, OR NETAFAM.
24. ANY DRIP SYSTEM PIPING IN PLANTING BEDS IS DIAGRAMMATIC. CONTRACTOR CAN ROUTE PIPING IN A FREEFORM MANNER (AVOIDING OBJECTS SUCH AS LIGHT POLES, TRANSFORMER PADS, EQUIPMENT VAULTS, SUBSURFACE ROCK TOO LARGE TO REMOVE, ETC.) AS LONG AS ALL PLANT MATERIAL RECEIVES THE PROPER NUMBER OF EMITTERS PER SCHEDULE AND THE VINYL DISTRIBUTION TUBING DOES NOT EXCEED THE MAXIMUM DESIGN LENGTHS PER MANUFACTURER'S RECOMMENDATIONS.
25. UNLESS OTHERWISE REQUIRED, BACKFLOW PREVENTION DEVICES LESS THAN 2" SHALL BE PLACED IN A WIRE MESH BASKET ENCLOSURE AND PAINTED TO MATCH THE PRIMARY BUILDING COLORS. SEE CIVIL PLANS FOR LOCATION.
26. ALL JOINTS AND BENDS 2" OR LARGER SHALL HAVE CONCRETE THRUST BLOCKING. THRUST BLOCKING SHALL BE A MINIMUM OF 1 CUBIC FOOT OF CONCRETE. PIPE SHALL NOT BE ENCASED IN CONCRETE. SEE DETAIL 31C FOR THRUST BLOCKING.
27. CONTRACTOR WILL PROVIDE OWNER WITH A COMPLETE AND REPRODUCIBLE DRAWING OR IRRIGATION SYSTEM LAYOUT AS IT WAS INSTALLED. DRAWING SHOULD INCLUDE, BUT NOT BE LIMITED TO, LOCATIONS OF ZONES VALVES, MAIN, LATERAL AND DISTRIBUTION LINES, SLEEVES, WATER METER, BACKFLOW PREVENTION DEVICE, SENSORS AND CONTROLLER.
28. ALL LATERAL LINE SIZING SHALL REFER TO PIPE SCHEDULE ON THIS PLAN.



EXISTING LEGEND

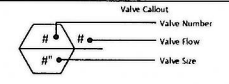
---	Boundary Line	⊕	Sewer Manhole (SMH)
- - - -	Adjoining Boundary Line	⊕	Utility Pole
---	Easement Line	⊕	Electric Riser
---	Gas Line	⊕	Telephone Riser
---	FDC	⊕	Found Chased "X"
---	Overhead Electric Line	⊕	Traffic Sign (Type of Sign)
---	DHE	⊕	Irrigation Control Box
---	Sanitary Sewer Line	⊕	Light Pole (1 Lamp)
---	Storm Drainage Pipe	⊕	Light Pole (2 Lamps)
---	Water Line	⊕	Light Pole (3 Lamps)
---	Flood Hazard Line	⊕	Electric Vault
⊕	Benchmark (BM)	⊕	Traffic Light (1 Lamp)
⊕	Set 5/8" Rebar "LS4816"	⊕	Electric Vault
⊕	Found Nail (As Noted)	⊕	Traffic Light (1 Lamp)
⊕	Set Mag Nail w/ Washer "LS4816"	⊕	Bollard / Guard Post
⊕	Found Pipe (As Noted)	⊕	Tree (Deciduous)
⊕	Electric Meter	⊕	(XXXX)
⊕	Water Meter	⊕	Record Bearing & Distance per Plat Bk. 2300, Fig. 189
⊕	Grate Inlet (GI)	⊕	FEMA Flood Zone "AE"
⊕	Fire Hydrant	⊕	Parking Count

PROPOSED LEGEND

---	BOUNDARY LINE/RIGHT OF WAY LINE
- - - -	STORM DRAIN

IRRIGATION SCHEDULE

SYMBOL	MANUFACTURER/MODEL/DESCRIPTION	QTY	PSI	DETAIL
⊕	RAIN BIRD 1806-SAM-PRS 15 STRIP SERIES TURF SPRAY 6" POP-UP SPRINKLER WITH CO-MOLDED WIPER SEAL 1/2" NPT FEMALE THREADED INLET. WITH SEAL-A-MATIC CHECK VALVE, AND PRESSURE REGULATING.	2	30	
⊕	RAIN BIRD 1806-SAM-PRS HE-VAN SERIES TURF SPRAY 6" POP-UP SPRINKLER WITH CO-MOLDED WIPER SEAL 1/2" NPT FEMALE THREADED INLET. WITH SEAL-A-MATIC CHECK VALVE, AND PRESSURE REGULATING.	30	30	
⊕	RAIN BIRD KCC-100-PBB-COM WIDE FLOW DRIP CONTROL KIT FOR COMMERCIAL APPLICATIONS. 1" BALL VALVE WITH 1" PESB VALVE AND 1" PRESSURE REGULATING 40PSI QUICK CHECK BASKET FILTER. 0.3GPM TO 20GPM.	1		
⊕	TREE DRIP RING 2 DRIP RINGS USING 12" EMITTER SPACING @ 9 GPH. 12" SPACING FROM TRUNK TO FIRST RING. 30" SPACING FROM TRUNK TO SECOND RING.	6		
⊕	RAIN BIRD PESB 1", 1-1/2", 2" PLASTIC INDUSTRIAL VALVES. LOW FLOW OPERATING CAPABILITY. GLOBE CONFIGURATION. WITH SCRUBBER TECHNOLOGY FOR RELIABLE PERFORMANCE IN DIRTY WATER IRRIGATION APPLICATIONS.	1		
⊕	IRRIGATION LATERAL LINE: BLU-LOCK AND PVC CLASS 200 BLU-LOCK PIPE, AS MANUFACTURED BY HYDRO RAIN, 1/2" TO 1", THEN PVC CLASS 200 FOR 1-1/4" AND LARGER. ONLY LATERAL TRANSFER PIPE SIZES 1" AND ABOVE ARE INDICATED ON THE PLAN, WITH ALL OTHERS BEING 3/4" IN SIZE.	462 L.F.		
⊕	PIPE SLEEVE: DUCTILE IRON PIPE	58.4 L.F.		



EXECUTIVE DIRECTOR APPROVAL

6-24-2020 Date
 [Signature] By

APPLICANT INFORMATION:

ENGINEER/APPLICANT:
 CEI ENGINEERING
 3030 LB FREEWAY, SUITE 100
 DALLAS, TEXAS 75234
 CONTACT: BRANDON WALDRUM
 479-254-1475

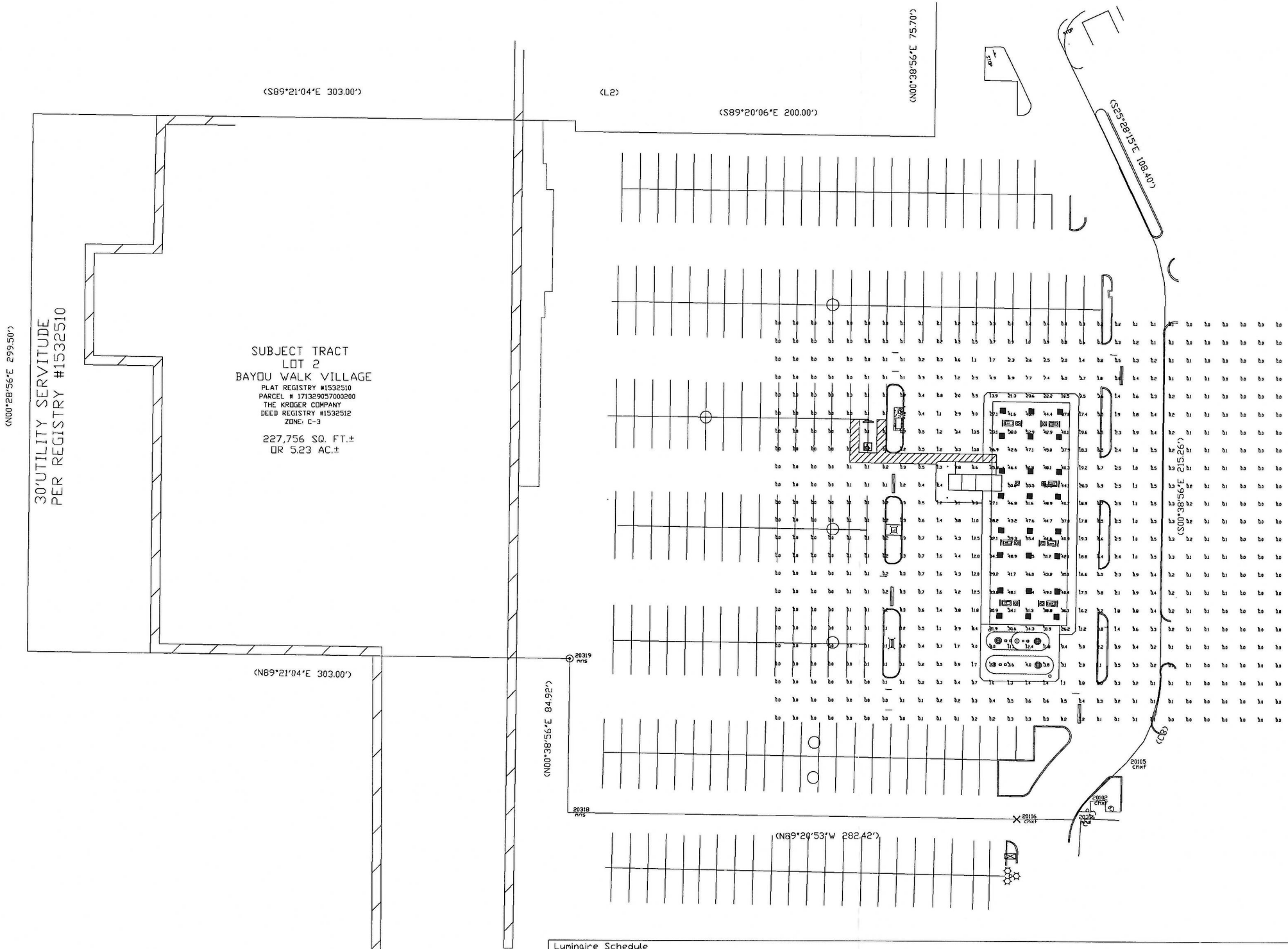
OWNER/DEVELOPER:
 THE KROGER CO.
 751 FREEPORT PARKWAY,
 COPPELL, TEXAS 75019



31678	6/11/2020	DPOR	BMW	MMP	MMP
CEI PROJECT NO.	INITIAL DATE	DPOR	PM	DES	DRW
CEI Engineering Associates, Inc.					
ENGINEERS • PLANNERS • SURVEYORS LANDSCAPE ARCHITECTS • ENVIRONMENTAL SCIENTISTS					
3030 LB Freeway, Suite 100 (972) 488-3737 Dallas, TX 75234 FAX (972) 488-6732					
KROGER FUEL					
6852 YOURS DR SHIRVEPORT LA					
IRRIGATION PLAN				REV DATE 6/11/2020	SHEET NO. L2
				REV-0	

JOB # 31678 DRAWING: 31678 - LP.dwg LAST SAVED BY: MPARKS LOCATION: F:\31000\31678\0\Drawings\Design\Working\31678 - LP.dwg

20-71-C



Click image to open Product Page

EXECUTIVE
 DIRECTOR
 APPROVAL

6-24-2020 Date
 [Signature] By

Symbol	Qty	Label	Arrangement	Description	LLD	UDF	LLF	Arr. Lum. Lumens	Arr. Watts
[Symbol]	24	A	SINGLE	SCV-LED-15L-SC-50 MTD @ 15'	1.000	1.000	1.000	15410	103

Label	CalcType	Units	Avg	Max	Min	Avg/Min	Max/Min
ALL CALC POINTS	Illuminance	Fc	5.28	55.5	0.0	N.A.	N.A.
CANDPY	Illuminance	Fc	41.06	55.5	21.9	1.87	2.53

Based on the information provided, all dimensions and luminaire locations shown represent recommended positions. The engineer and/or architect must determine the applicability of the layout to existing or future field conditions.

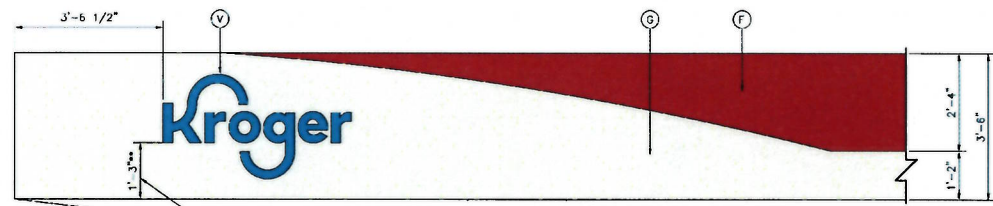
This lighting plan represents illumination levels calculated from laboratory data taken under controlled conditions in accordance with The Illuminating Engineering Society (IES) approved methods. Actual performance of any manufacturer's luminaires may vary due to changes in electrical voltage, tolerance in lamps/LED's and other variable field conditions. Calculations do not include obstructions such as buildings, curbs, landscaping, or any other architectural elements unless noted. Fixture nomenclature noted does not include mounting hardware or poles. This drawing is for photometric evaluation purposes only and should not be used as a construction document or as a final document for ordering product.

Total Project Watts
 Total Watts = 2472

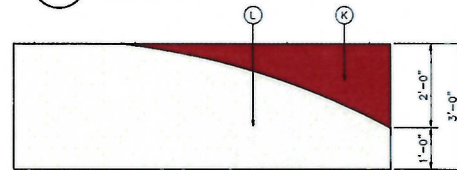
LIGHTING PROPOSAL LO-151574
 KROGER FUEL
 6652 YOUNG DR
 SHREVEPORT, LA

DATE: 6-19-20 REV: SHEET 1 OF 1
 SCALE: 1"=30'

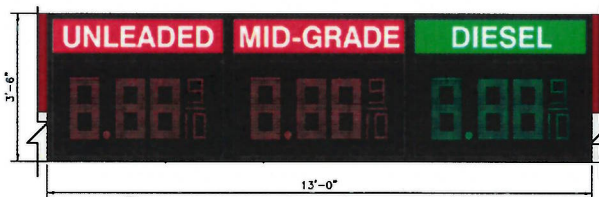
20-71-C



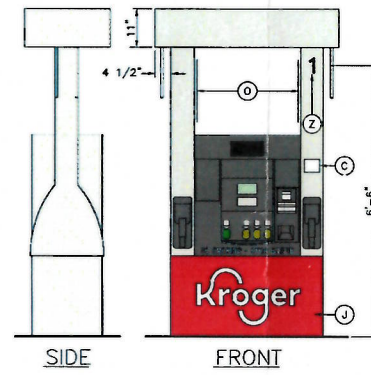
1 CANOPY GRAPHICS
SCALE: 1/2"=1'-0"



2 KIOSK GRAPHICS
SCALE: 1/2"=1'-0"



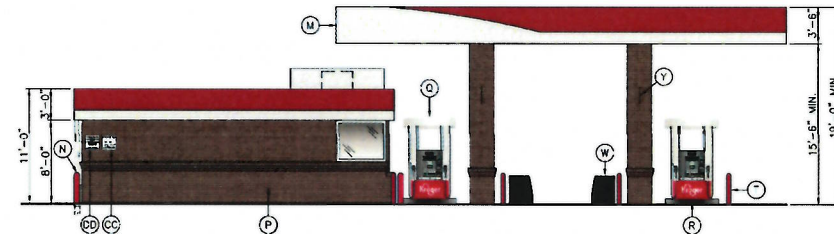
8 CANOPY PRICE SIGN GRAPHICS
SCALE: 1/2"=1'-0"



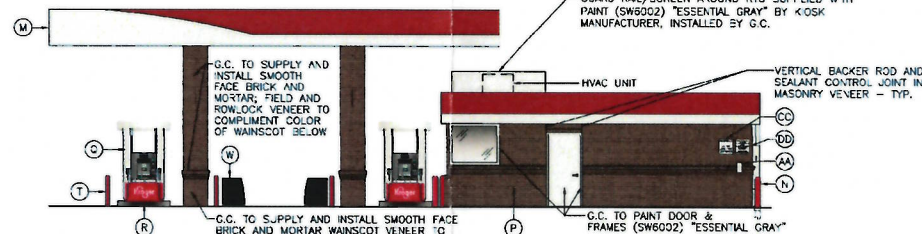
7 DISPENSER ELEVATION
SCALE: 1/2"=1'-0"

EQUIPMENT SCHEDULE

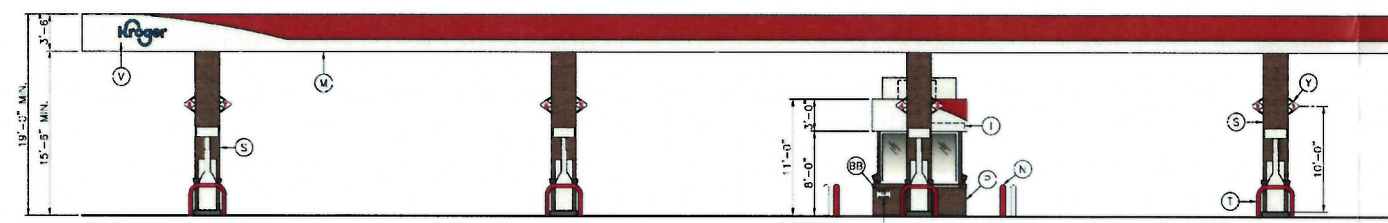
ITEM	DESCRIPTION	COLOR	MANUFACTURER	MODEL	FURNISHED BY	INSTALLED BY
A	NOT USED					
B	NOT USED					
C	STATIC WARNING DECAL		WAYNE		DISPENSER MANUFACTURER	DISPENSER MANUFACTURER
D	NOT USED					
E	NOT USED					
F	CANOPY FASCIA	RED			CANOPY FABRICATOR	CANOPY FABRICATOR
G	CANOPY FASCIA	PLATINUM			CANOPY FABRICATOR	CANOPY FABRICATOR
H	NOT USED					
I	PRE-CUT BLACK VINYL ADDRESS DECALS PER LOCAL AUTHORITY SPECIFICATIONS, IF REQUIRED				GENERAL CONTRACTOR	GENERAL CONTRACTOR
J	DISPENSER DOOR GRAPHICS	RED WITH WHITE LETTERS	WAYNE		DISPENSER MANUFACTURER	DISPENSER MANUFACTURER
K	KIOSK FASCIA	RED			KIOSK FABRICATOR	KIOSK FABRICATOR
L	KIOSK FASCIA	PLATINUM			KIOSK FABRICATOR	KIOSK FABRICATOR
M	CANOPY				CANOPY FABRICATOR	CANOPY FABRICATOR
N	6" DIAMETER BOLLARD - G.C. TO PAINT	SAFETY RED			GENERAL CONTRACTOR	GENERAL CONTRACTOR
O	HEALTH AND SAFETY DECALS		WAYNE		DISPENSER MANUFACTURER	GENERAL CONTRACTOR
P	KIOSK - PREFABRICATED SEE DRAWINGS FOR ADDITIONAL WORK BY G.C.				KIOSK FABRICATOR	GENERAL CONTRACTOR
Q	DISPENSER		WAYNE		OWNER	GENERAL CONTRACTOR
R	ISLAND FORMS		RIVERSIDE		OWNER	GENERAL CONTRACTOR
S	CANOPY COLUMNS SEE DRAWINGS FOR ADDITIONAL WORK BY G.C.				CANOPY FABRICATOR	CANOPY FABRICATOR
T	U-SHAPED BOLLARD - G.C. TO PAINT, 3'-0" IN HEIGHT	SAFETY RED			DPW	GENERAL CONTRACTOR
U	LED PRICE SIGN AND CONTROL ANTENNA SEE DETAIL B, THIS SHEET		LANDMARK SIGN ALLIANCE		OWNER	SIGN INSTALLER
V	ILLUMINATED CHANNEL LETTERS		CUMMINGS SIGNS		OWNER	SIGN INSTALLER
W	WASTE RECEPTACLE/WINDSHIELD SERVICE CENTER		DCI MARKETING		OWNER	GENERAL CONTRACTOR
X	NOT USED					
Y	PUMP NUMBER FLAG				CANOPY FABRICATOR	GENERAL CONTRACTOR
Z	4" BLACK VINYL DECAL (DISPENSER NUMBER)				OWNER	GENERAL CONTRACTOR
AA	CALL BOX				OWNER	GENERAL CONTRACTOR
BB	EMERGENCY FUEL SHUTDOWN SIGN		REFER TO A3.1: DETAIL 1		GENERAL CONTRACTOR	GENERAL CONTRACTOR
CC	UNATTENDED WARNING SIGN		REFER TO A3.1: DETAIL 2		GENERAL CONTRACTOR	GENERAL CONTRACTOR
DD	EMERGENCY INSTRUCTION SIGN		REFER TO A3.1: DETAIL 3		GENERAL CONTRACTOR	GENERAL CONTRACTOR



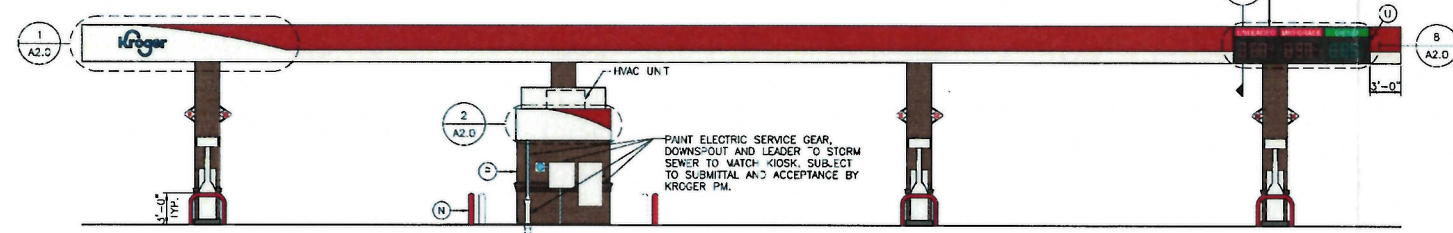
3 LEFT ELEVATION
SCALE: 1/8"=1'-0"



4 RIGHT ELEVATION
SCALE: 1/8"=1'-0"



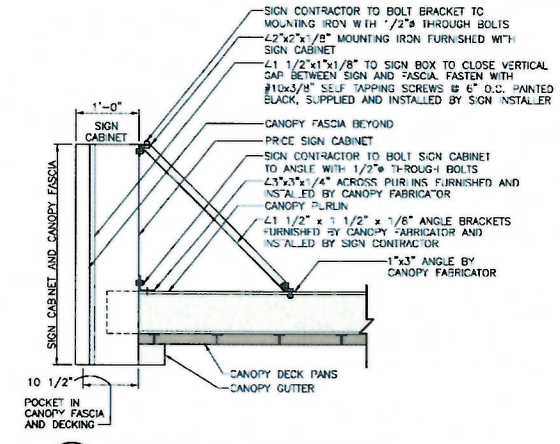
5 FRONT ELEVATION
SCALE: 1/8"=1'-0"



6 REAR ELEVATION
SCALE: 1/8"=1'-0"

CONTRACTOR SHALL SUBMIT: MASONRY, MORTAR, MASONRY VENEER TIES, HORIZONTAL MASONRY VENEER REINFORCING AND PAINT SAMPLES TO OWNER'S CONSTRUCTION REPRESENTATIVE FOR APPROVAL PRIOR TO ORDERING MATERIALS.

EXECUTIVE DIRECTOR APPROVAL
Date: 6-24-2020 By: [Signature]



9 SECTION AT CANOPY SIGN
NOT TO SCALE

THIS DRAWING IS AND SHALL REMAIN THE PROPERTY OF THE KROGER COMPANY. REPRODUCTION OR ALTERATION OF THIS DRAWING WITHOUT THE EXPRESS WRITTEN PERMISSION OF THE KROGER COMPANY IS PROHIBITED. (NOT PUBLISHED; ALL RIGHTS RESERVED.)
NOTE TO CONTRACTORS: THIS SET OF DRAWINGS AND DOCUMENTS IS INTENDED AS A SET OF GUIDELINES FOR THE PROJECT AND ARE INTENDED TO BE USED IN CONJUNCTION WITH A SET OF CONSTRUCTION SPECIFICATIONS TO BE SUPPLIED BY OWNER. THEY MUST BE READ TO INCORPORATE ALL APPLICABLE FEDERAL, STATE, AND LOCAL CODES INCLUDING FEDERAL A.I.A. REQUIREMENTS. THIS SET ASSUMES THAT THERE ARE NO UNUSUAL SOIL CONDITIONS OR WIND LOADS. THE FAILURE OF THIS CONDITION MAY REQUIRE SIGNIFICANT CHANGES TO THESE DOCUMENTS. IT IS THE RESPONSIBILITY OF THE GENERAL CONTRACTOR TO CONFORM TO ALL APPLICABLE CODES AND TO INFORM THE OWNERS/ARCHITECTS OF ANY QUESTIONS OR CLARIFICATIONS WHICH ARE DESIRED. CONTRACTORS SHALL ALSO VISIT THE SITE BEFORE BIDDING. CONTRACTORS ARE REQUIRED TO KNOW ALL OBSERVABLE CONDITIONS AND APPLICABLE CODES.

Galloway
6102 S. Willow Drive, Suite 230
Chenoweth Village, CO 80111
gallowayusa.com

PRELIMINARY NOT FOR CONSTRUCTION

Copyright
THESE PLANS ARE AN INSTRUMENT OF SERVICE AND ARE THE PROPERTY OF GALLOWAY, AND MAY NOT BE REPRODUCED, COPIED, OR REPRODUCED WITHOUT THE WRITTEN CONSENT OF GALLOWAY. COPYRIGHTS AND INFRINGEMENTS WILL BE ENFORCED AND PROSECUTED.

The Kroger Co.
Supermarket Petroleum Group
100 N. High Street, Cincinnati, OH 45222
Phone: (513) 712-5921
Fax: (513) 712-5925

Kroger

NO.	DESCRIPTION	DATE

Project #: DAL-539
Date: MAY, 2020
Scale: FULL
Disk File: K:\DAL539_A2.0-ELEV
Model: 7(GD) Brick Offsite
Address: 6652 Yarrow Dr.
Shreveport, LA 71105

EXTERIOR ELEVATIONS & SIGNAGE

Sheet: **A2.0**

20-71-C

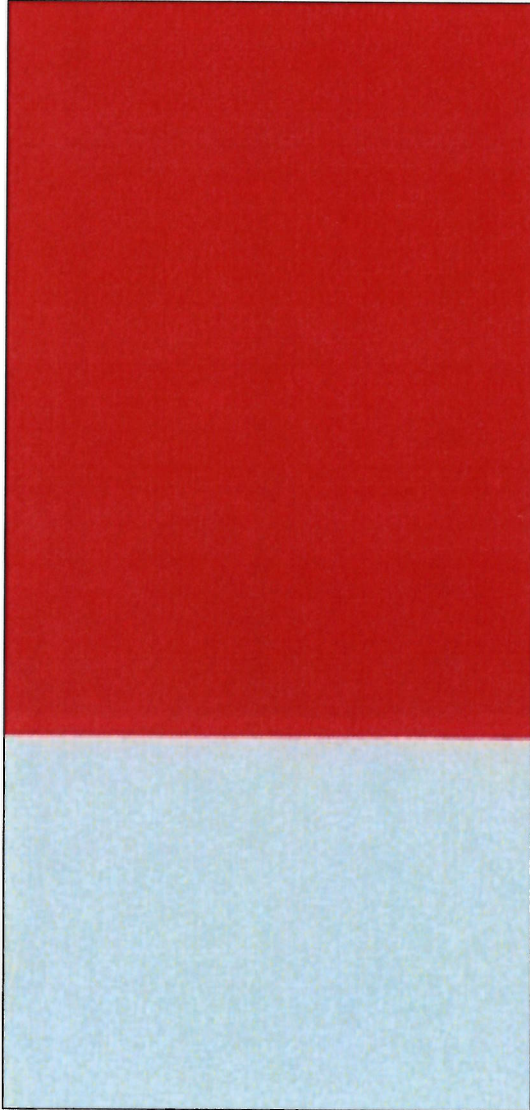
EXTERIOR COLORS/MATERIALS

KROGER
#DAL-539
SHREVEPORT, LA

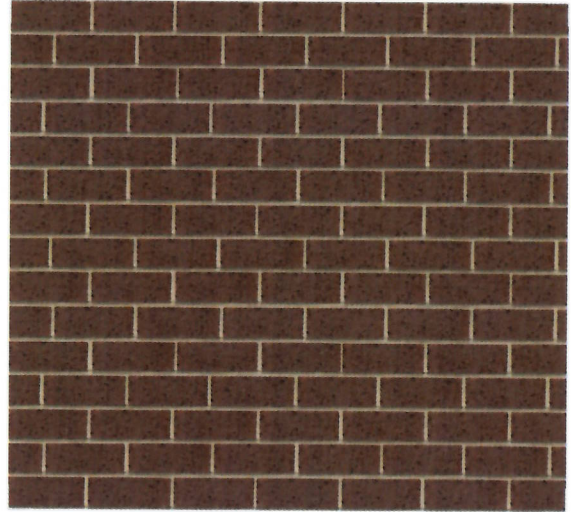
CANOPY FASCIA

CANOPY & KIOSK BRICK

ACM
FASCIA
RED



ACM
FASCIA
PLATINUM



BRICK VENEER
SMOOTH FACE
MODULAR CLAY BRICK
TO COMPLIMENT EXISTING
KROGER GROCERY STORE

BRICK TYPE: MODULAR	NOMINAL SIZE SIZE DxHxL (INCHES) 4" x 2 3/3" X 8"
SPECIFIED SIZE SIZE DxHxL (INCHES) 3 5/8"x2 1/4"x7 5/8"	VERTICAL COURSE: 3 COURSED = 8"

EXECUTIVE
DIRECTOR
APPROVAL

6-24-2020
Date

By *[Signature]*

Galloway

6162 S. Willow Drive, Suite 320
Greenwood Village, CO 80111
303.770.8884
GallowayUS.com

KRODAL539.40

20-71-C



DATE: MAY, 2020