



Copyright 2019

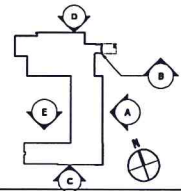
General Notes:

- DO NOT SCALE DRAWINGS. CONTACT ARCHITECT IF ADDITIONAL INFORMATION IS REQUIRED.
- SEE A200 & A201 FOR WINDOW PROFILE TYPE.
- SEE A200 FOR WINDOW PROFILE DETAILS.

KEY LEGEND

- B-1 FACE BRICK, LIGHT ACCENT
- B-2 FACE BRICK, FIELD COLOR
- B-3 FACE BRICK, DARK ACCENT

- E-1 EIFS, LIGHT ACCENT
- E-2 EIFS, FIELD COLOR
- E-3 EIFS, DARK ACCENT



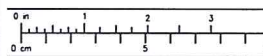
Key Plan

MARK	ISSUE DATE	DESCRIPTION
	01/21/2020	100% DD DOCUMENTS

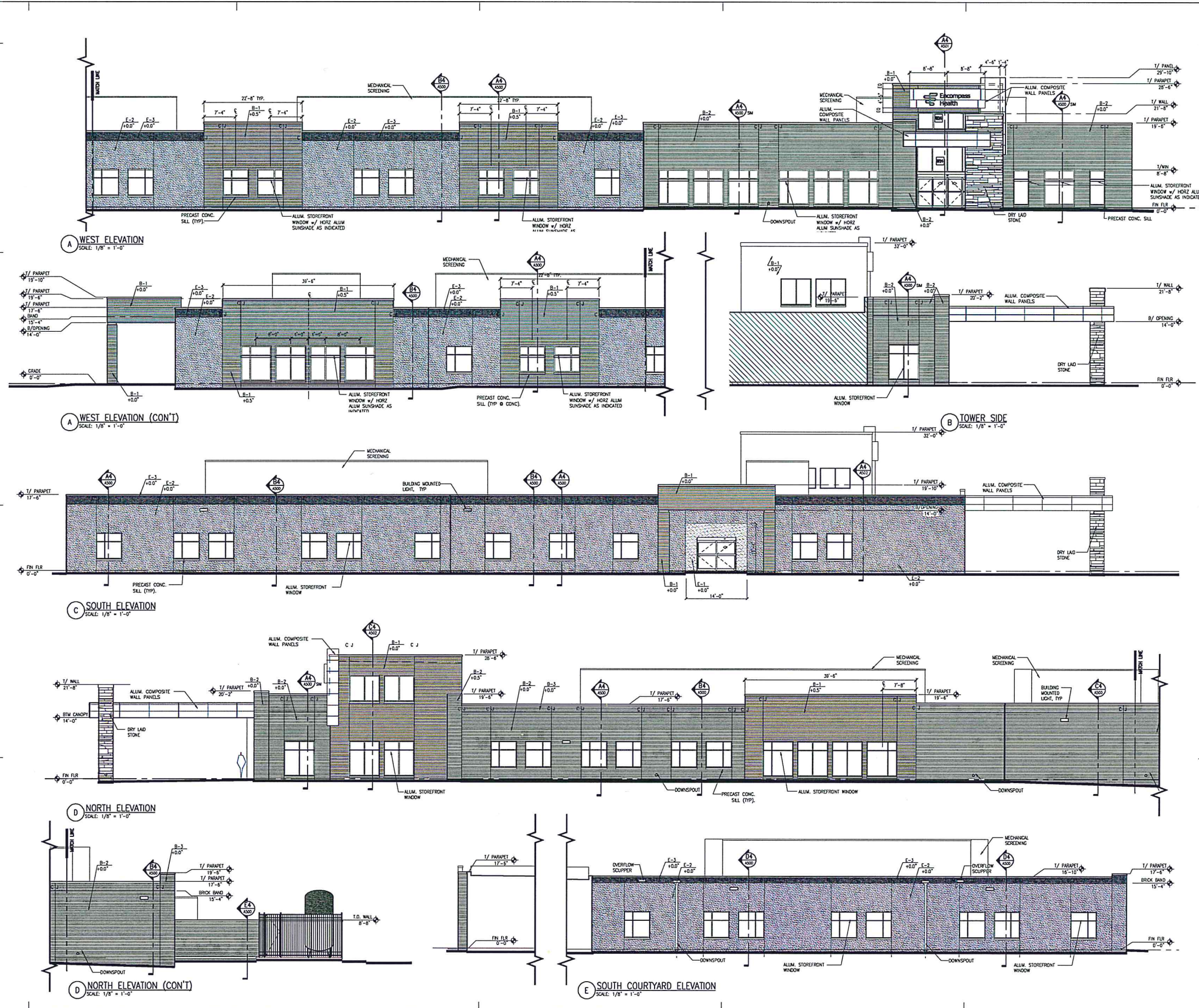
Issue Log

ENCOMPASS HEALTH
REHABILITATION HOSPITAL
OF SHREVEPORT
SHREVEPORT, LOUISIANA

Drawing Title
EXTERIOR ELEVATIONS



Commission No.	41912	Date Issued	1/21/2020
Scale	AS NOTED	Sheet Number	
Drawn By	JF	Checked By	JF
Approved By	JF	Client Name	
Project #	A400		



EXECUTIVE
DIRECTOR
APPROVAL

Date 5-8-2020 By *[Signature]*



Copyright 2019

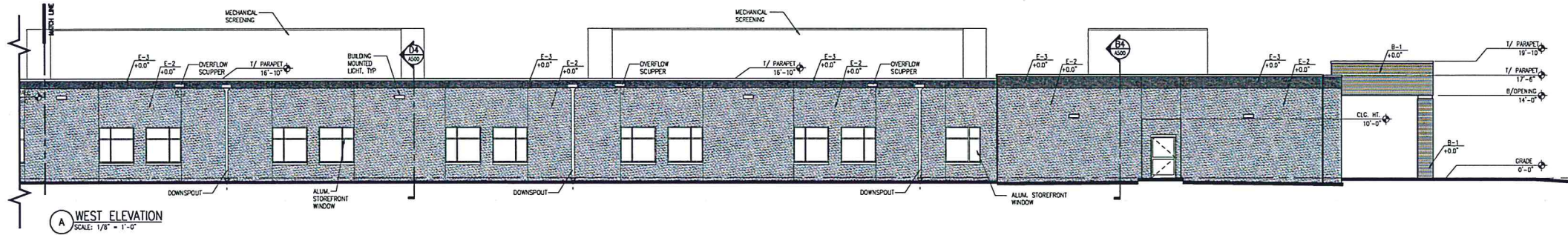
General Notes:

- DO NOT SCALE DRAWINGS. CONTACT ARCHITECT IF ADDITIONAL INFORMATION IS REQUIRED.
- SEE A200 & A201 FOR WINDOW PROFILE TYPE.
- SEE A300 FOR WINDOW PROFILE DETAILS.

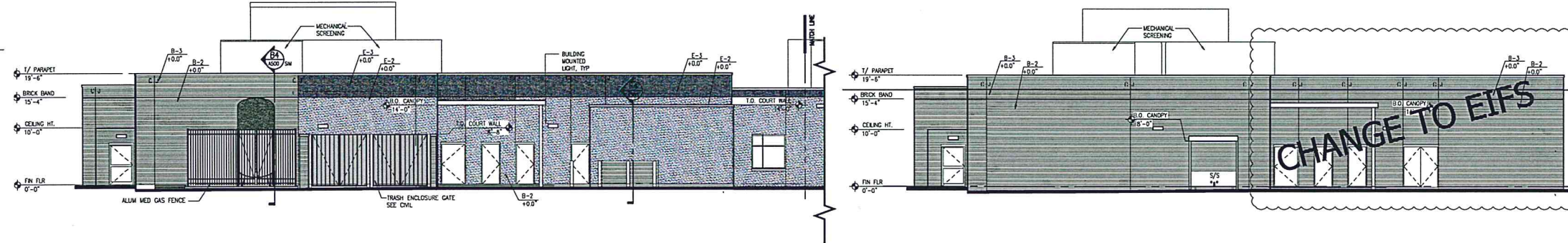
KEY LEGEND

- B-1 FACE BRICK, LIGHT ACCENT
- B-2 FACE BRICK, FIELD COLOR
- B-3 FACE BRICK, DARK ACCENT

- E-1 EIFS, LIGHT ACCENT
- E-2 EIFS, FIELD COLOR
- E-3 EIFS, DARK ACCENT

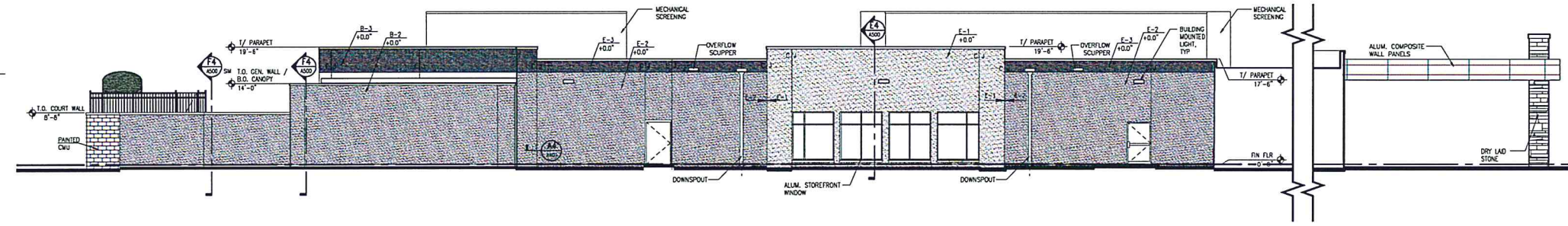


A WEST ELEVATION
SCALE: 1/8" = 1'-0"

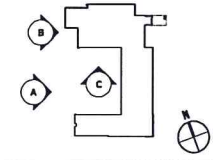


A WEST ELEVATION (CON'T)
SCALE: 1/8" = 1'-0"

B SERVICE COURT ELEVATION
SCALE: 1/8" = 1'-0"



C NORTH COURTYARD ELEVATION
SCALE: 1/8" = 1'-0"



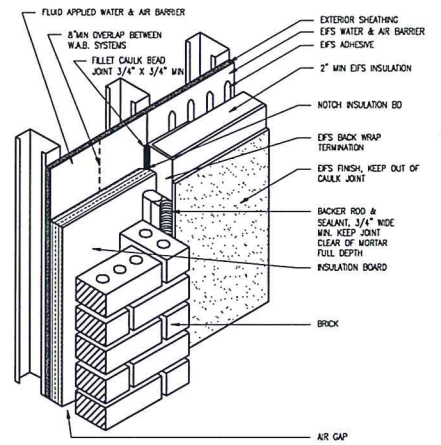
Key Plan

MARK	ISSUE DATE	DESCRIPTION
	01/21/2020	100% DD DOCUMENTS

Issue Log

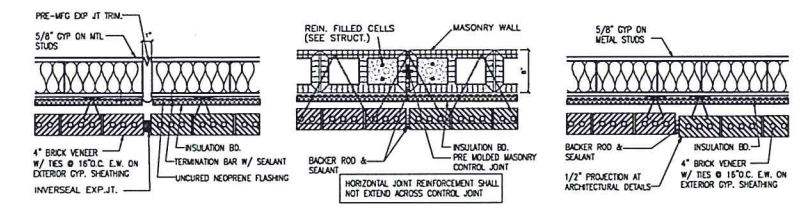
EXECUTIVE
DIRECTOR
APPROVAL

5-8-2020
Date By *acch*



A4 EIFS TRANSITION DETAIL
SCALE: 1 1/2" = 1'-0"

NOTE: DETAIL DESIGN PRACTICAL FOR EIFS INSTALLATION FIRST, THEN BRICK IF BRICK INSTALLED FIRST. HOLD INSULATION SHORT 1" FROM EIFS. CAULK BACKUP JOINT AS SHOWN AFTER EIFS INSTALLED. THEN SPRAY FDM OVER CAULK TO MAKE INSULATION CONTINUOUS.



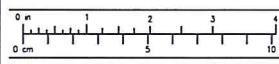
E STUD/BRICK EXPANSION JOINT
SCALE: 1" = 1'-0"

G CMU/BRICK CONTROL JOINT
SCALE: 1" = 1'-0"

H BRICK CONTROL JOINT
SCALE: 1" = 1'-0"

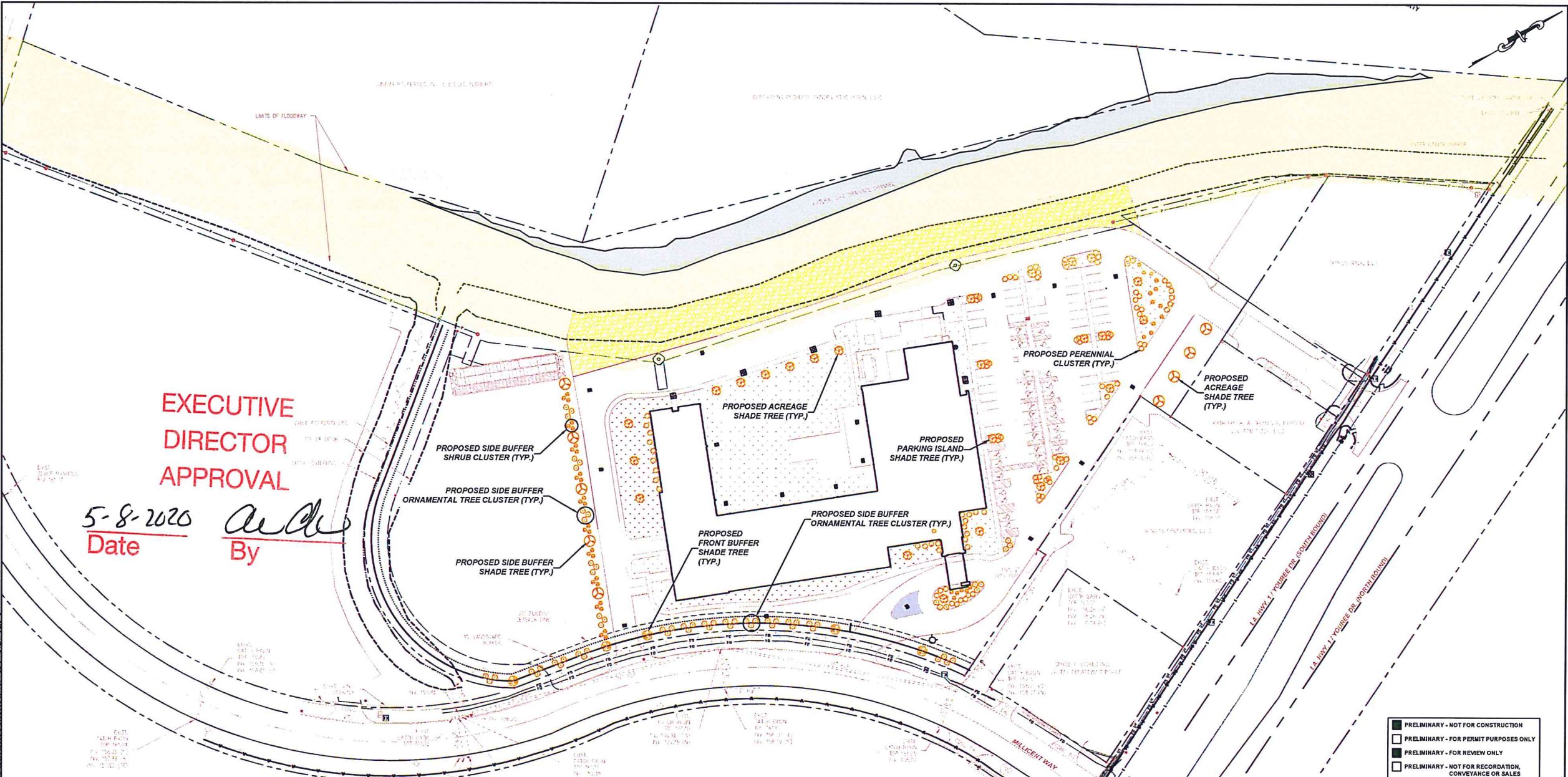
ENCOMPASS HEALTH
REHABILITATION HOSPITAL
OF SHREVEPORT
SHREVEPORT, LOUISIANA

Drawing Title
EXTERIOR ELEVATIONS



Commission No.	41912	Date Issued	1/21/2020
Scale	AS NOTED	Sheet Number	
Drawn By	JP		
Approved By	JF		
Filename			

A401



EXECUTIVE DIRECTOR APPROVAL
 5-8-2020 Date By *[Signature]*

- LANDSCAPE PLANTING REQUIREMENT CALCULATIONS:**
- SHADE TREES (2 PER ACRE):
 ±7,069 ACRES x 2 = ±14,138 SHADE TREES
 FRONT BUFFER SHADE TREES (1 PER 500 SF), OR
 ORNAMENTAL TREES (3 PER 500 SF):
 ±8,567 SF / 500 SF = ±17.134 SHADE TREES, OR
 ±54 ORNAMENTAL TREES, OR
 A COMBINATION THEREOF MEETING MINIMUM REQUIREMENTS
 - SIDE BUFFER SHADE TREES (1 PER 30 LF), OR
 ORNAMENTAL TREES (3 PER 30 LF):
 ±285 LF / 30 LF = ±9.5 SHADE TREES, OR
 ±30 ORNAMENTAL TREES, OR
 A COMBINATION THEREOF MEETING MINIMUM REQUIREMENTS
 - PARK ISLAND SHADE TREES (1 PER ISLAND), OR
 ORNAMENTAL TREES (2 PER ISLAND):
 ±12 PARKING LOT ISLANDS AND/OR END AREAS x 1 = 12, OR
 ±12 PARKING LOT ISLANDS AND/OR END AREAS x 2 = 24, OR
 A COMBINATION THEREOF MEETING MINIMUM REQUIREMENTS

- LANDSCAPE LEGEND:**
- RED SHUMARD OAK
 - BALD CYPRESS
 - LOBLOLLY PINE
 - ORNAMENTAL TREE
 - SHRUB
 - PERENNIAL

PLANT PALETTE			
TYPE	COMMON NAME	SCIENTIFIC NAME	NUMBER OF EACH
SHADE TREE	CYPRESS, BALD	TAXODIUM DISTICHUM	25
SHADE TREE	OAK, SHUMARD RED	QUERCUS SHUMARDII	5
SHADE TREE	PINE, LOBLOLLY	PINUS TAEDA	9
ORNAMENTAL TREE	MAPLE, FLORIDA	ACER BARBATUM	16
ORNAMENTAL TREE	MAPLE, RED	ACER RUBRUM	16
ORNAMENTAL TREE	CRAPPE MYRTLE	LAGERSTROEMIA INDICA	16
ORNAMENTAL TREE	SNOWBALL, AMERICAN	STRYAX AMERICANUS	16
SHRUB AND/OR PERENNIAL	AZALEA	RHODODENDRON SPP	20
SHRUB AND/OR PERENNIAL	BOXWOOD, COMMON	BUXUS SEMPERVIRENS	20
SHRUB AND/OR PERENNIAL	DAYLILY	HEMEROCALLIS FULVA	20
SHRUB AND/OR PERENNIAL	DRIFT ROSE	ROSA 'MELOCOS'	20
SHRUB AND/OR PERENNIAL	DWARF PALMETTO	SABAL MINOR	20
SHRUB AND/OR PERENNIAL	HOLLY OSMANTHUS	OSMANTHUS HETEROPHYLLUS	20
SHRUB AND/OR PERENNIAL	SHISHI GARSHIRA CAMELLIA	CAMELLIA SASANQUA 'SHISHI GASHIRA'	20

PRELIMINARY - NOT FOR CONSTRUCTION
 PRELIMINARY - FOR PERMIT PURPOSES ONLY
 PRELIMINARY - FOR REVIEW ONLY
 PRELIMINARY - NOT FOR RECORDATION, CONVEYANCE OR SALES
 This document is issued under the supervision of Clinton C. Patrick, P.E. - License No. 40919. This document should not be considered a certified document.

Dogwood Island Subdivision
 11.920 Acre Tract
 Shreveport, Caddo Parish, Louisiana
 Survey by Denmon Engineering - 11/15/19
 Encompass Health Louisiana Real Estate, LLC
 Birmingham, AL 35242

MPC Approval:
 Executive Director _____ Date _____

REV. NO.	DATE	DRWN	CHKD	REMARKS

DESIGNED BY: CCP
 DRAWN BY: JC
 CHECKED BY: RBH
 SCALE: 1" = 50'
 DATE: NOVEMBER, 2019

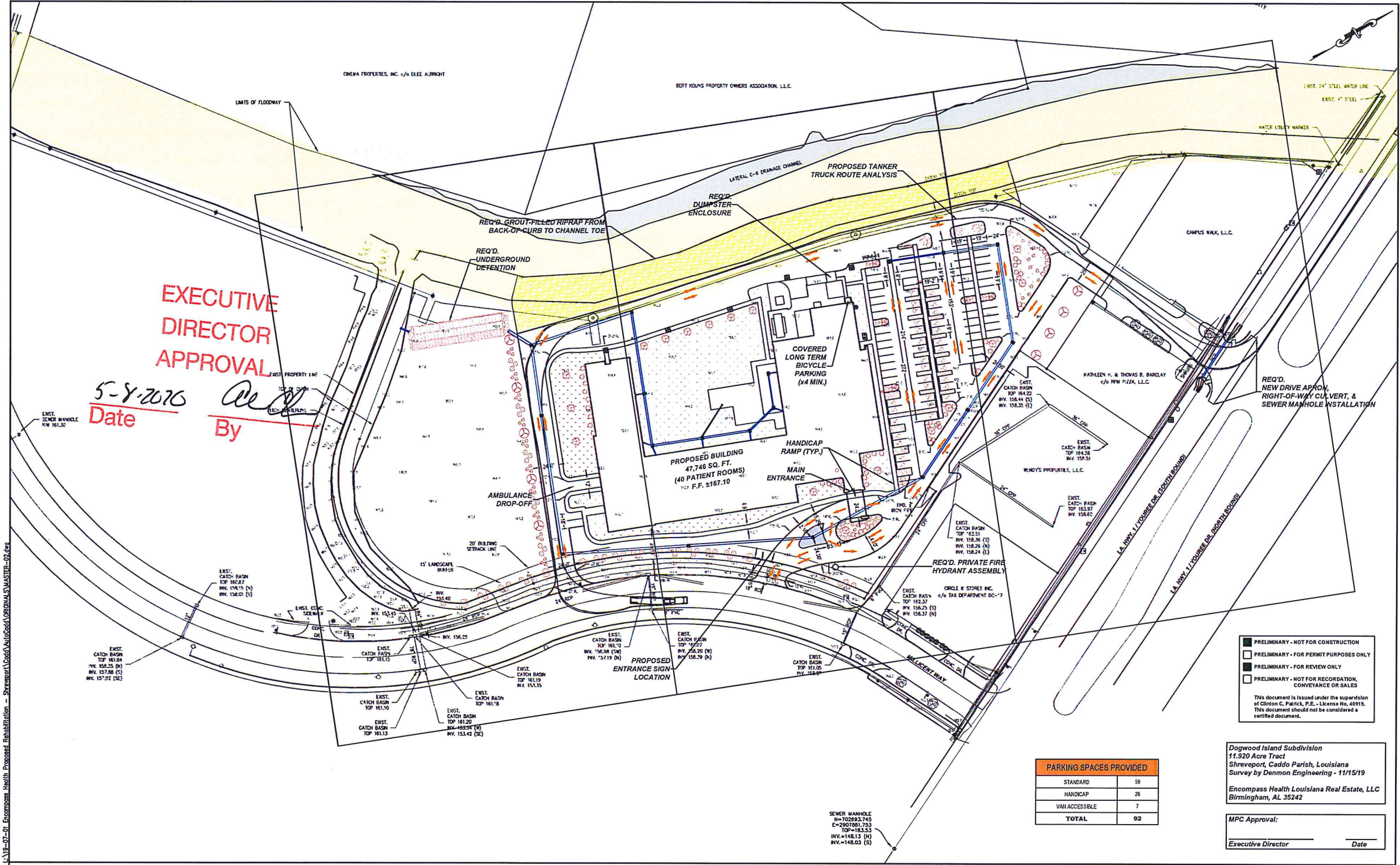
DENMON ENGINEERING
 Engineers and Surveyors
 P.O. Box 8460
 Monroe, LA 71211-8460
 Phone: 318-388-1422
 FAX: 318-381-5036

**ENCOMPASS HEALTH
 CADDO PARISH, LOUISIANA
 PROPOSED REHABILITATION HOSPITAL**

PROPOSED LANDSCAPING PLAN



PROJECT NO. 19-07-01
 FILE NAME: MASTER-02
 SHEET NO. **C8.0**



EXECUTIVE DIRECTOR APPROVAL
 Date 5-8-2016 By [Signature]

PRELIMINARY - NOT FOR CONSTRUCTION
 PRELIMINARY - FOR PERMIT PURPOSES ONLY
 PRELIMINARY - FOR REVIEW ONLY
 PRELIMINARY - NOT FOR RECORDATION, CONVEYANCE OR SALES
 This document is issued under the supervision of Clinton C. Patrick, P.E., License No. 49913. This document should not be considered a certified document.

PARKING SPACES PROVIDED	
STANDARD	59
HANDICAP	26
VAN ACCESSIBLE	7
TOTAL	92

Dogwood Island Subdivision
 11.920 Acre Tract
 Shreveport, Caddo Parish, Louisiana
 Survey by Denmon Engineering - 11/15/19
 Enccompass Health Louisiana Real Estate, LLC
 Birmingham, AL 35242

MPC Approval:
 Executive Director _____ Date _____

REV. NO.	DATE	DRWN	CHKD	REMARKS

DESIGNED BY: CCP
 DRAWN BY: JC
 CHECKED BY: RBH
 SCALE: 1" = 50'
 DATE: NOVEMBER, 2019



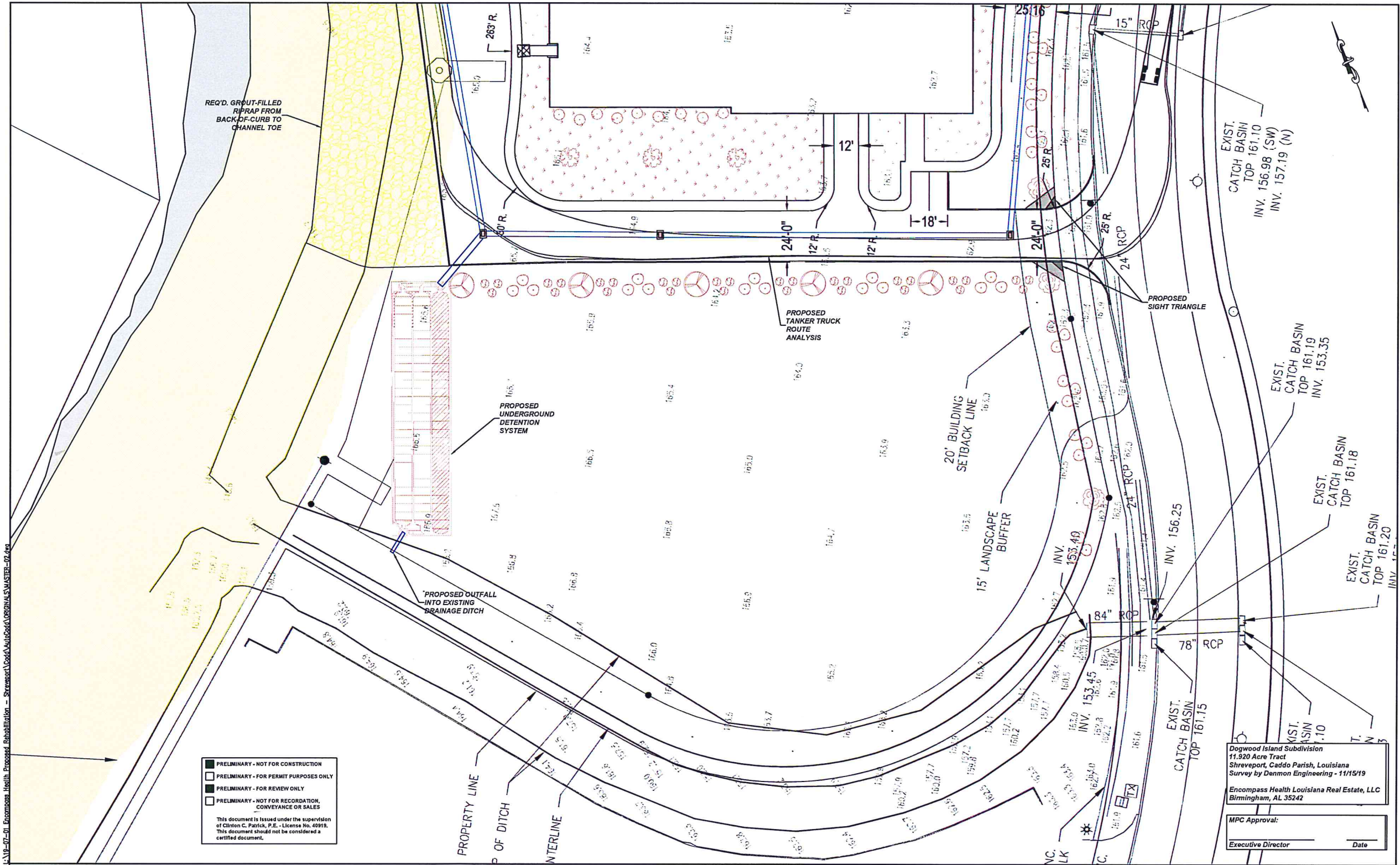
DENMON ENGINEERING
 Engineers and Surveyors
 P.O. Box 8480
 Monroe, LA 71211-8480
 Phone: 318-388-1422
 FAX: 318-381-6036

ENCOMPASS HEALTH
CADDO PARISH, LOUISIANA
PROPOSED REHABILITATION HOSPITAL

PROPOSED SITE PLAN



PROJECT NO. 19-07-01
 FILE NAME: MASTER-02
 SHEET NO. **C3.0**




PRELIMINARY - NOT FOR CONSTRUCTION
 PRELIMINARY - FOR PERMIT PURPOSES ONLY
 PRELIMINARY - FOR REVIEW ONLY
 PRELIMINARY - NOT FOR RECORDATION, CONVEYANCE OR SALES
 This document is issued under the supervision of Clinton C. Patrick, P.E. - License No. 40919. This document should not be considered a certified document.

Dogwood Island Subdivision
 11.920 Acre Tract
 Shreveport, Caddo Parish, Louisiana
 Survey by Denmon Engineering - 11/15/19
 Encompass Health Louisiana Real Estate, LLC
 Birmingham, AL 35242
 MPC Approval: _____
 Executive Director _____ Date _____

EXECUTIVE DIRECTOR APPROVAL
 Date 5-8-2020 By [Signature]

REV. NO.	DATE	DRWN	CHKD	REMARKS

DESIGNED BY: CCP
 DRAWN BY: JC
 CHECKED BY: RBH
 SCALE: 1" = 20'
 DATE: NOVEMBER, 2019



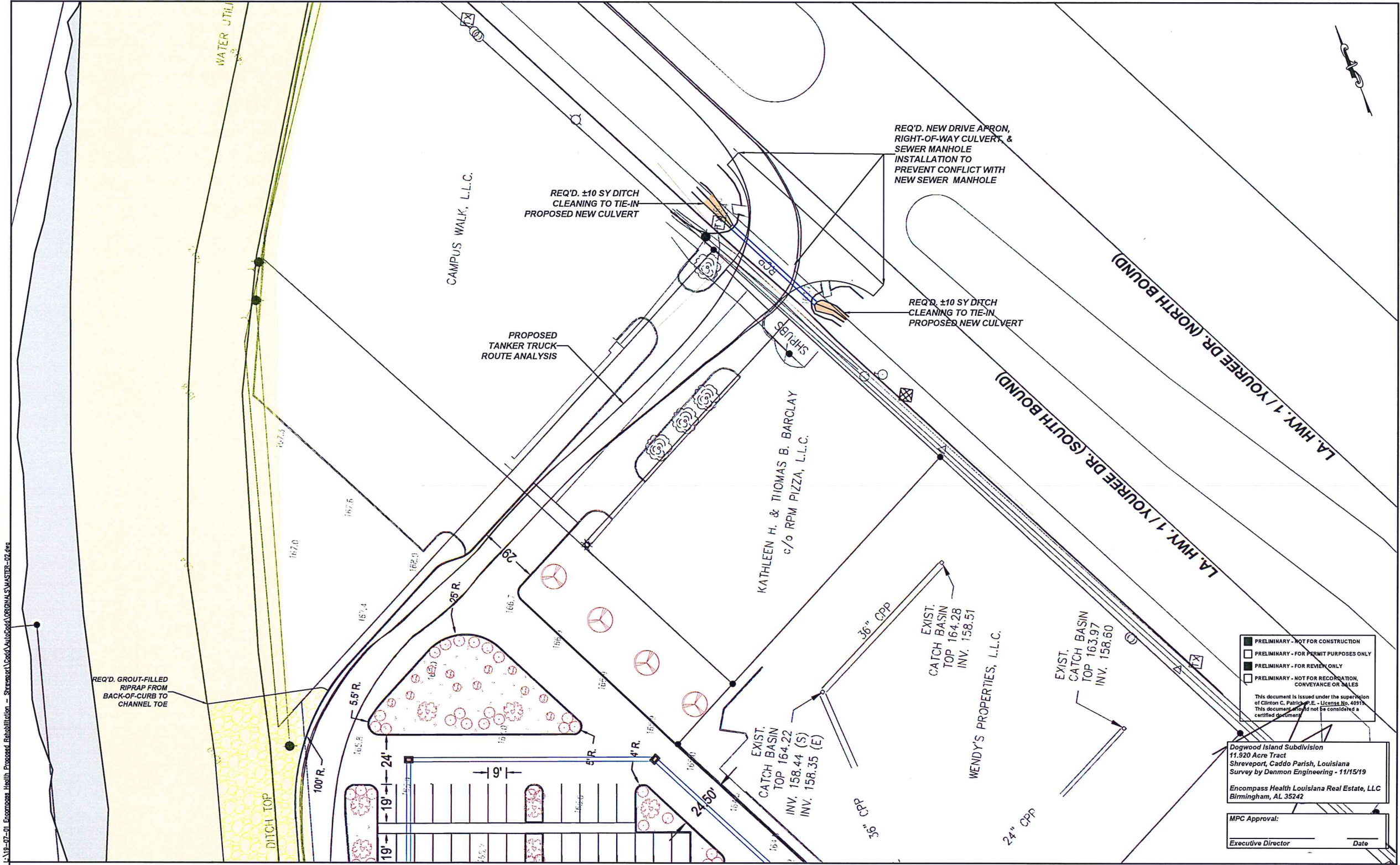
DENMON ENGINEERING
 Engineers and Surveyors
 P.O. Box 8460
 Monroe, LA 71211-8460
 Phone: 318-388-1422
 FAX: 318-381-6036

ENCOMPASS HEALTH
CADDO PARISH, LOUISIANA
PROPOSED REHABILITATION HOSPITAL

ENLARGED PROPOSED SITE PLAN



PROJECT NO. 19-07-01
 FILE NAME: MASTER-02
 SHEET NO. **C3.1**



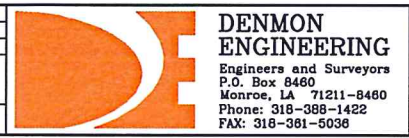
PRELIMINARY - NOT FOR CONSTRUCTION
 PRELIMINARY - FOR PERMIT PURPOSES ONLY
 PRELIMINARY - FOR REVIEW ONLY
 PRELIMINARY - NOT FOR RECORDATION, CONVEYANCE OR SALES
 This document is issued under the supervision of Clinton C. Patrick, P.E. - License No. 40919. This document should not be considered a certified document.

Dogwood Island Subdivision
 11.920 Acre Tract
 Shreveport, Caddo Parish, Louisiana
 Survey by Denmon Engineering - 11/15/19
 Encompass Health Louisiana Real Estate, LLC
 Birmingham, AL 35242

MPC Approval: _____ Date _____
 Executive Director _____

REV. NO.	DATE	DRWN	CHKD	REMARKS

DESIGNED BY: CCP
 DRAWN BY: JC
 CHECKED BY: RBH
 SCALE: 1" = 20'
 DATE: NOVEMBER, 2019



ENCOMPASS HEALTH
CADDO PARISH, LOUISIANA
PROPOSED REHABILITATION HOSPITAL

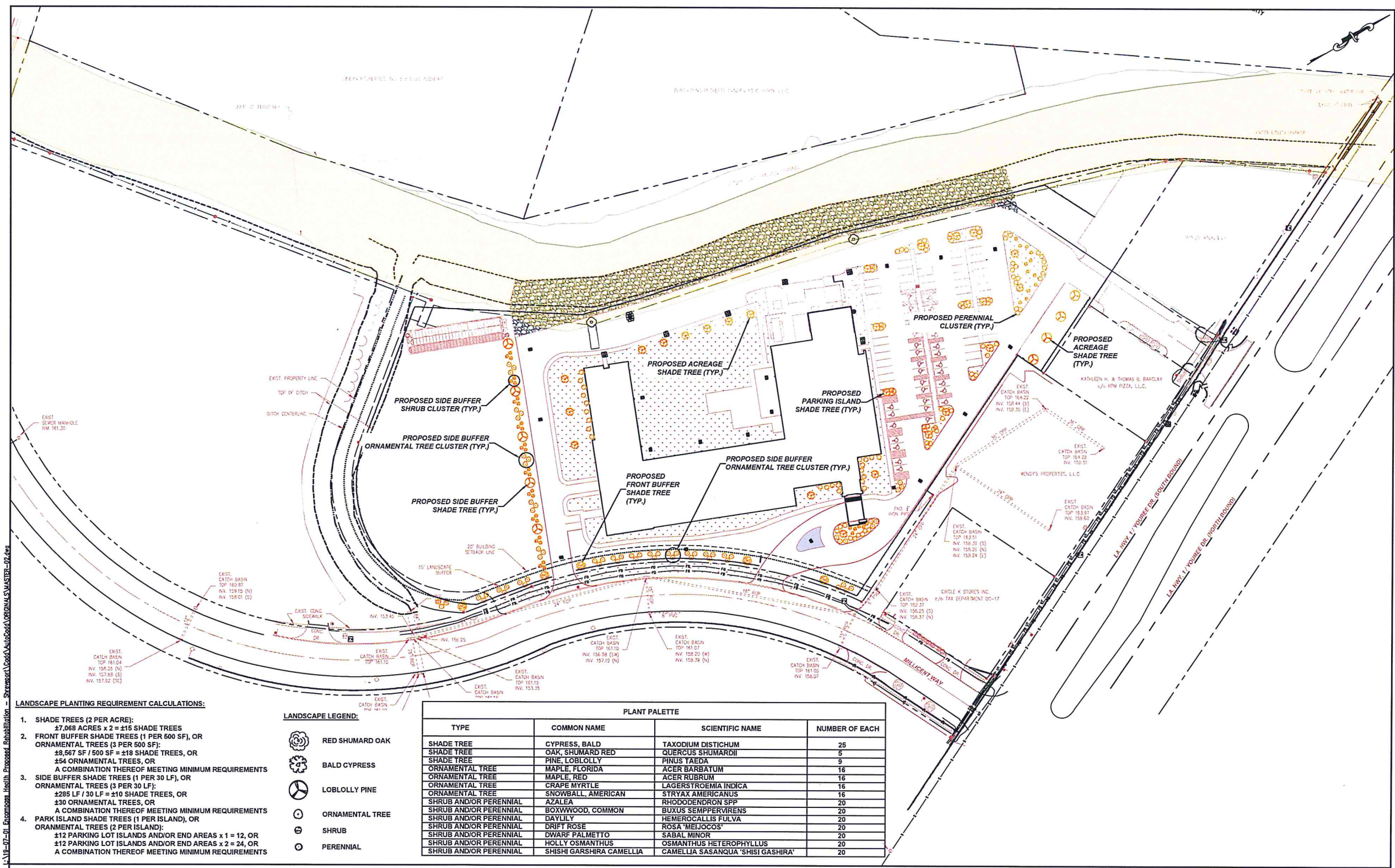
ENLARGED PROPOSED
SITE PLAN



PROJECT NO. 19-07-01
 FILE NAME: MASTER-02
 SHEET NO.
C3.3

EXECUTIVE
 DIRECTOR
 APPROVAL
 Date 5-8-2020 By [Signature]

L:\19-07-01 Encompass Health Proposed Rehabilitation - Shreveport\Caddo\Originals\MASTER-02.dwg



- LANDSCAPE PLANTING REQUIREMENT CALCULATIONS:**
- SHADE TREES (2 PER ACRE):
 $47,068 \text{ ACRES} \times 2 = \pm 116 \text{ SHADE TREES}$
 FRONT BUFFER SHADE TREES (1 PER 600 SF), OR
 ORNAMENTAL TREES (3 PER 500 SF):
 $\pm 8,567 \text{ SF} / 500 \text{ SF} = \pm 18 \text{ SHADE TREES, OR}$
 $\pm 54 \text{ ORNAMENTAL TREES, OR}$
 A COMBINATION THEREOF MEETING MINIMUM REQUIREMENTS
 - SIDE BUFFER SHADE TREES (1 PER 30 LF), OR
 ORNAMENTAL TREES (3 PER 30 LF):
 $2285 \text{ LF} / 30 \text{ LF} = \pm 10 \text{ SHADE TREES, OR}$
 $430 \text{ ORNAMENTAL TREES, OR}$
 A COMBINATION THEREOF MEETING MINIMUM REQUIREMENTS
 - PARK ISLAND SHADE TREES (1 PER ISLAND), OR
 ORNAMENTAL TREES (2 PER ISLAND):
 $\pm 12 \text{ PARKING LOT ISLANDS AND/OR END AREAS} \times 1 = 12, \text{ OR}$
 $\pm 12 \text{ PARKING LOT ISLANDS AND/OR END AREAS} \times 2 = 24, \text{ OR}$
 A COMBINATION THEREOF MEETING MINIMUM REQUIREMENTS

LANDSCAPE LEGEND:

	RED SHUMARD OAK
	BALD CYPRESS
	LOBLOLLY PINE
	ORNAMENTAL TREE
	SHRUB
	PERENNIAL

PLANT PALETTE

TYPE	COMMON NAME	SCIENTIFIC NAME	NUMBER OF EACH
SHADE TREE	CYPRESS, BALD	TAXODIUM DISTICHUM	25
SHADE TREE	OAK, SHUMARD RED	QUERCUS SHUMARDII	5
SHADE TREE	PINE, LOBLOLLY	PINUS TAEDA	9
ORNAMENTAL TREE	MAPLE, FLORIDA	ACER BARBATUM	16
ORNAMENTAL TREE	MAPLE, RED	ACER RUBRUM	16
ORNAMENTAL TREE	CRAPE MYRTLE	LAGERSTROEMIA INDICA	16
ORNAMENTAL TREE	SNOWBALL, AMERICAN	STRYAX AMERICANUS	16
SHRUB AND/OR PERENNIAL	AZALEA	RHODODENDRON SPP	20
SHRUB AND/OR PERENNIAL	BOXWOOD, COMMON	BUXUS SEMPERVIRENS	20
SHRUB AND/OR PERENNIAL	DAYLILY	HEMEROCALLIS FULVA	20
SHRUB AND/OR PERENNIAL	DRIFT ROSE	ROSA 'MEIJOCOS'	20
SHRUB AND/OR PERENNIAL	DWARF PALMETTO	SABAL MINOR	20
SHRUB AND/OR PERENNIAL	HOLLY OSMANTHUS	OSMANTHUS HETEROPHYLLUS	20
SHRUB AND/OR PERENNIAL	SHISHI GARSHIRA CAMELLIA	CAMELLIA SASANQUA 'SHISHI GASHIRA'	20

EXECUTIVE DIRECTOR APPROVAL
 Date: 5-4-2020
 By: *[Signature]*

REV. NO.	DATE	DRWN	CHKD	REMARKS

DESIGNED BY: CCP
 DRAWN BY: JC
 CHECKED BY: RBH
 SCALE: 1" = 50'
 DATE: NOVEMBER, 2019



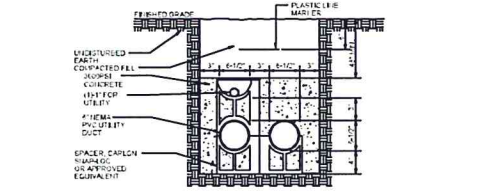
DENMON ENGINEERING
 Engineers and Surveyors
 P.O. Box 8480
 Monroe, LA 71211-8480
 Phone: 318-388-1422
 FAX: 318-381-5036

ENCOMPASS HEALTH
CADDO PARISH, LOUISIANA
PROPOSED REHABILITATION HOSPITAL

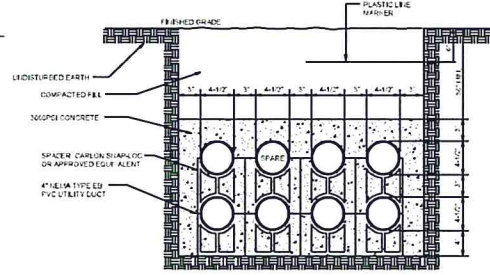
PROPOSED LANDSCAPING PLAN



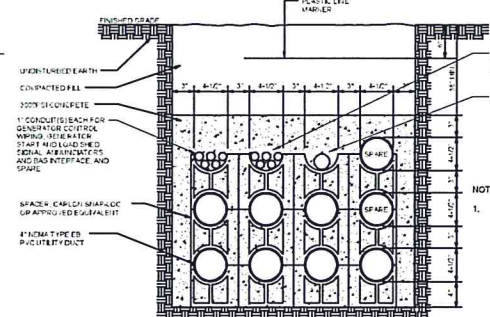
PROJECT NO. 19-07-01
 FILE NAME: MASTER-02
 SHEET NO. **C8.0**



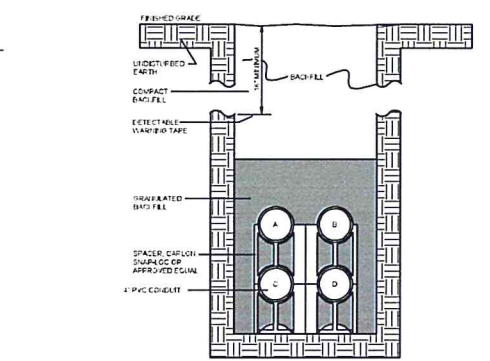
A-A
E201 DUCTBANK DETAIL - SECTION A-A
 SCALE: NOT TO SCALE



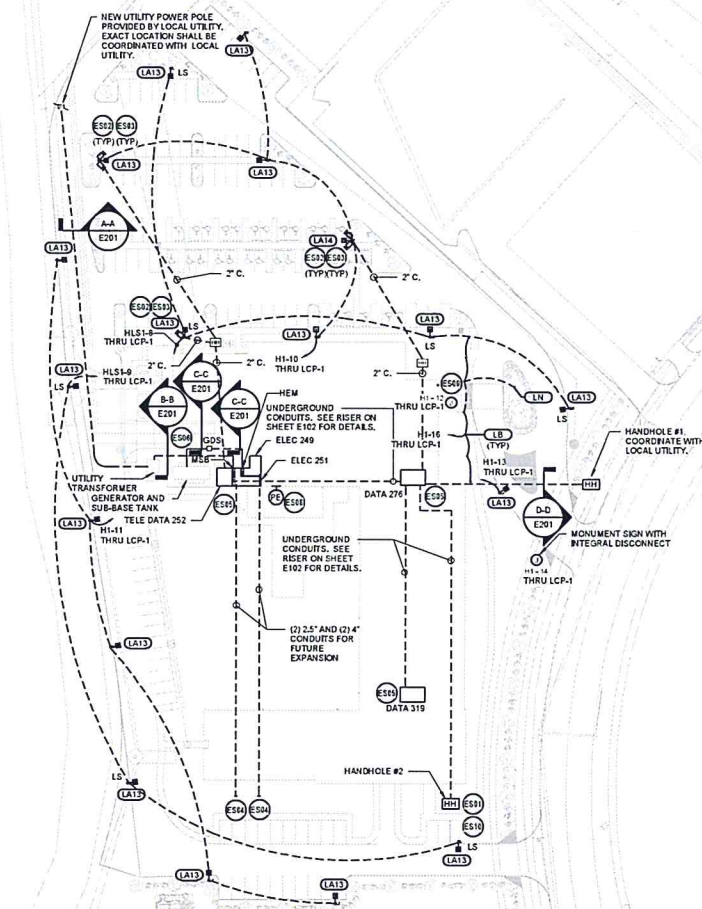
B-B
E201 DUCTBANK DETAIL - SECTION B-B
 SCALE: NOT TO SCALE



C-C
E201 DUCTBANK DETAIL - SECTION C-C
 SCALE: NOT TO SCALE



D-D
E201 DUCTBANK DETAIL - SECTION D-D
 SCALE: NOT TO SCALE



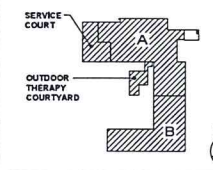
ELECTRICAL SITE PLAN
 SCALE: 1" = 50'-0"

PLAN NOTES

- E501 ENCOMPASS TELECOMM HAND HOLE. 36"X36"X36" DEEP, COMPOSITE OR CONCRETE, HIGHLINE MODEL: CVA300333 OR EQUAL TO HUBBELL OR PANCELL. OPEN BOTTOM WITH GRAVEL BACKFILL. SEE TELECOMM RISER AND DETAILS FOR MORE INFORMATION.
- E502 SECURITY CAMERA MOUNTED AT 15' ABOVE FINISHED GRADE. MANUFACTURER TO PROVIDE HANDHOLE, CABLE SUPPORT, AND MOUNTING PROVISIONS. COORDINATE WITH OWNER.
- E503 PROVIDE 2" CONDUIT FROM HAND HOLE TO THE BASE OF EACH LIGHT POLE AS SHOWN. EXTEND SEALTIGHT FROM CONDUIT TO CUSTOMER PROVIDED COMMSCOPE MEDIA CONVERTER AT THE BASE. EXTEND SEALTIGHT FROM MEDIA CONVERTER AT THE BASE OF THE POLE TO THE CAMERA MOUNTING HEIGHT AS DIRECTED BY SECURITY CAMERA INSTALLER. INSTALL FIBER FROM DATA CLOSET AS SHOWN TO THE BASE OF EACH CAMERA LOCATION. LEAVE 12" OF SLACK AT THE POLE. FIBER SPECIFICATION: COMMSCOPE OM3, 2 FIBERS, OUTDOOR, 12 AWG, PART NUMBER: PFC-S0020127.
- E504 CONDUITS FOR FUTURE EXPANSION TO BE STUBBED UP INSIDE ELECTRICAL ROOMS IN AN AREA CLEAR OF OTHER EQUIPMENT. CONDUITS SHALL NOT BE TERMINATED IN A PANEL BOARD. SPARE CONDUITS SHALL BE CAPPED AND SEALED.
- E505 DO NOT ALLOW ANY SYSTEMS OTHER THAN EQUIPMENT THAT IS DIRECTLY RELATED TO THE SUPPORT OF THE DATA ROOM THROUGH DATA ROOM TO COMPLY WITH CHAPTER 7 OF THE HEALTH CARE FACILITIES CODE (NFPA 99).
- E506 COORDINATE DUCTBANK WITH STRUCTURAL GRADE BEAM AND OTHER UNDERGROUND UTILITIES.
- E508 PHOTOCELL FOR LCP-1 MOUNTED ON ROOF. COORDINATE WITH MANUFACTURER'S RECOMMENDATIONS FOR OPTIMUM LOCATION.
- E509 JUNCTION BOX LOCATED ON ROOF FOR BUILDING MOUNTED SCIM. CIRCUIT AS INDICATED ON PLANS THRU LCP-1. COORDINATE WITH MANUFACTURER ADDITIONAL REQUIREMENTS.
- E510 TO STREET LOCATION. COORDINATE WITH UTILITY. PLACE HANDHOLE AND CONDUITS AT PROPERTY LINE.

Copyright 2019
General Notes

- A. COORDINATE ROUTING OF PRIMARY SERVICE WITH LOCAL POWER COMPANY. PROVIDE ANY ADDITIONAL PULLBOXES AND/OR MANHOLES AS DIRECTED BY UTILITY. DO NOT RUN PRIMARY SERVICE UNDER BUILDING UNLESS PRIOR APPROVAL BY UTILITY AND LOCAL AUI.
- B. COORDINATE FINAL LOCATION OF UTILITY TRANSFORMER WITH UTILITY PRIOR TO BID AND INSTALLATION.
- C. ALL TRENCHING FOR UTILITY SHALL MEET FINAL APPROVAL FROM THE UTILITY PRIOR TO FILL.
- D. COORDINATE ALL EXTERIOR POLE BASED LIGHTING WITH LANDSCAPE CONTRACTOR PRIOR TO ROUGH-IN. ANY CONFLICTS SHALL BE ADDRESSED TO THE ARCHITECT.
- E. VERIFY WITH THE LOCAL TELEPHONE PROVIDER THE LOCATION AND CONDUIT SIZE FOR SERVICE.
- F. VERIFY WITH THE LOCAL CABLE T.V. PROVIDER THE LOCATION AND CONDUIT SIZE FOR SERVICE.
- G. COORDINATE WITH CIVIL AND IRRIGATION PLANS FOR ANY EQUIPMENT REQUIRING ELECTRICAL CONNECTIONS. FAILURE TO COORDINATE DOES NOT RELIEVE THE ELECTRICAL CONTRACTOR FROM PROVIDING ALL NECESSARY DEVICES AND LABOR TO PROVIDE A COMPLETE AND WORKING SYSTEM FOR THE EQUIPMENT.
- H. ALL 4" CONDUITS FOR AUXILIARY SYSTEMS TO HAVE MARCELL 4" THREE CELL INNER DUCTS WITH PULL TAPES IN EACH CELL. SEE CATV, SECURITY, TELEDATA RISER DIAGRAM.
- I. CONTRACTOR SHALL OBTAIN AND REFER TO UTILITY COMPANY REQUIREMENTS FOR ELECTRIC SERVICE AND METER INSTALLATIONS BEFORE BID AND PRICING. THESE REQUIREMENTS ARE PART OF THE CONTRACT DOCUMENT. FAILURE TO OBTAIN THESE REQUIREMENTS AND PROVIDE FOR THEM REQUIREMENTS SHALL NOT BE THE BASIS FOR EXTRA COMPENSATION FOR ANY ADDITIONAL WORK REQUIRED TO BE PERFORMED. COORDINATE UTILITY REQUIREMENTS INCLUDING CONDUITS, TRANSFORMER, AND METERING WITH POWER COMPANY.
- J. ALL CONDUITS STUBBED OUT FOR FUTURE SHALL BE SEALED PER NEC REQUIREMENTS. PROVIDE WITH PULL STRING.
- K. PLAN DOES NOT INDICATE ALL LIGHTING CIRCUITRY. REFER TO FLOOR PLANS FOR ADDITIONAL LIGHTING CIRCUITRY.
- L. REFER TO SHEET E003 FOR LIGHTING CONTROL WIRING DIAGRAM AND SCHEDULES.



Key Plan

MARK	ISSUE DATE	DESCRIPTION
	01/20/20	10% DD DOCUMENTS
	04/22/20	10% CONSTRUCTION DOCUMENTS

Issue Log

04/22/2020
 This sheet has been electronically signed and sealed by Alan N. Bostrom, License # 42360. This document is the property of SSOE, Inc. and shall remain confidential. It is not to be distributed outside the project without the written consent of SSOE, Inc.

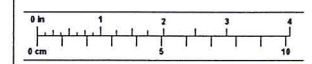


EXECUTIVE DIRECTOR APPROVAL

5-8-2020 Date By *Alan N. Bostrom*

ENCOMPASS HEALTH REHABILITATION HOSPITAL OF SHREVEPORT SHREVEPORT, LOUISIANA

Drawing Title
 SITE PLAN ELECTRICAL



Commission No.	41912	Date Issued	1/23/2020
Scale	AS NOTED	Sheet Number	
Drawn By			
Approved By			
Project #	020-00248-03		

E201