

DRAWN BY: OD
 CHECKED BY: SM
 DATE: 3/16/2020

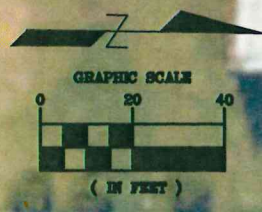
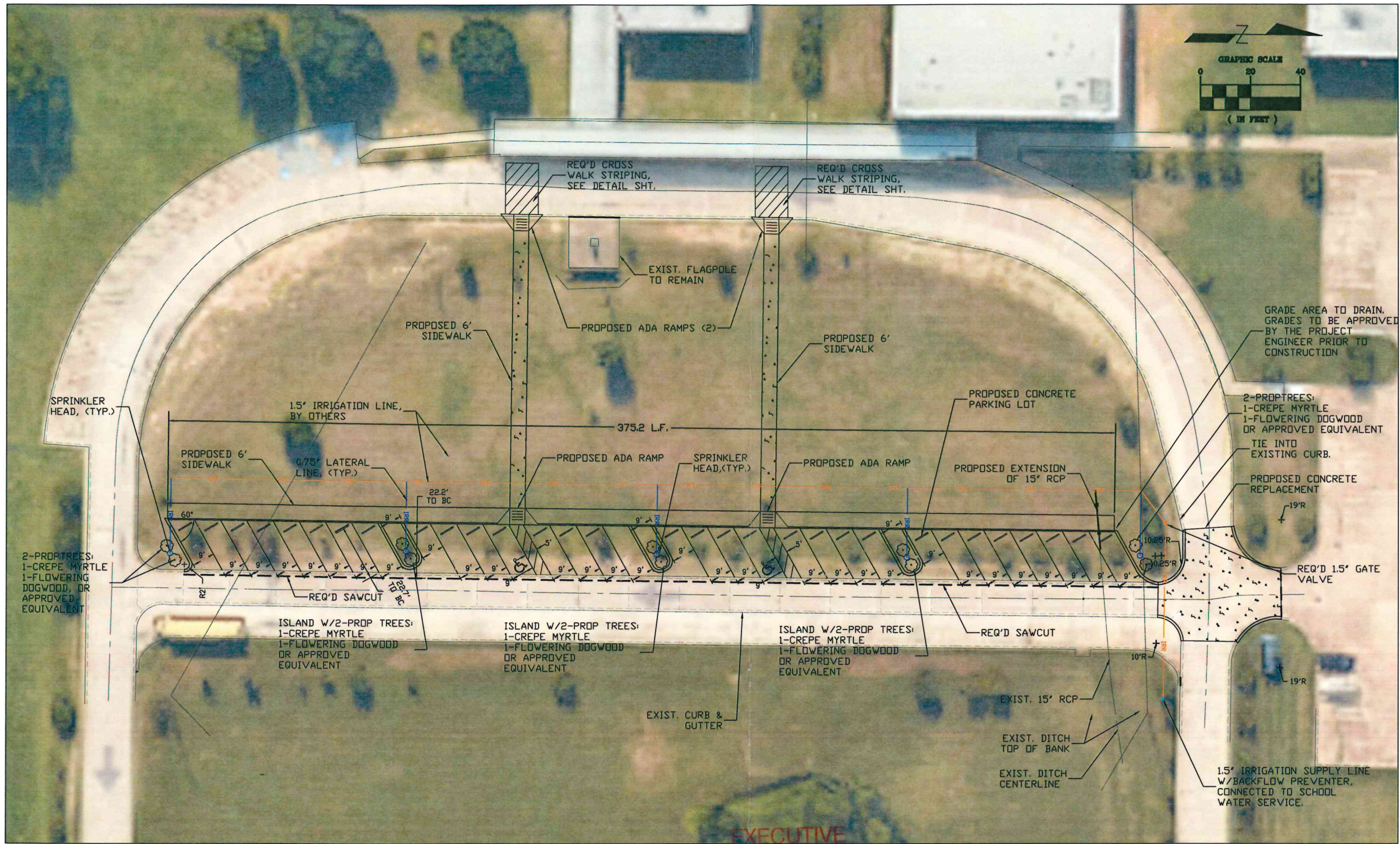


04-01-2020

PROPOSED PARKING IMPROVEMENTS
 CADDO PARISH SCHOOL BOARD
 WALNUT HILLS ELEMENTARY ADDITIONAL PARKING LOT

DATE	DESCRIPTION	BY

SCALE: 1"=20'
 PROJECT NO. 2021-240
 SHEET NO. C4



- LEGEND**
- 1.5" MAIN LINE
 - 0.75" LATERAL LINE
 - SPRINKLER HEAD
 - GATE VALVE
 - PROPOSED TREES, CREPE MYRTLE AND FLOWERING DOGWOOD

EXECUTIVE DIRECTOR APPROVAL

7-8-2020 *AC*
 Date By

THIS PROJECT PROVIDES FOR ADDITIONAL PARKING AT THE WALNUT HILLS ELEMENTARY SCHOOL LOCATED AT 9360 WOOLWORTH ROAD, SHREVEPORT, LOUISIANA. THE CURRENT CONTRACT WILL PROVIDE FOR THE PAVING OF THE PARKING SPACES, SIDEWALK AND ADA RAMPS. A SUBSEQUENT CONTRACT WILL PROVIDE FOR THE IRRIGATION AND LANDSCAPING.

20-88-c