

- PLANT LEGEND**
- WOOD MULCH BEDS
 - CRUSHED STONE BEDS
 - ALL UNPAVED AREAS WITHIN THE PROPERTY BOUNDARIES ARE TO BE PLANTED WITH BERMUDA GRASS UNLESS OTHERWISE NOTED
 - EVERGREEN SHRUBS (SPACED 2'-0" APART)
 - GARDENIA - 1 GAL
 - AZALEA - 1 GAL
 - BUMELIA HYBRID (2'-0" - 3'-0")
 - CAMELLIA - 1 GAL
 - FLOWERING QUINCE - 1 GAL
 - HYDRANGEA - 1 GAL
 - BLACK EYED SUSAN - 1 GAL
 - FUZZY DEUTERA - 3 GAL
 - SYCAMORE TREE - 3" GAL (SHADE TREE)
 - AMERICAN ELM TREE - 3" GAL (SHADE TREE)
 - JAPANESE MAPLE TREE - 3" GAL
 - TULIP POPLAR - 3" GAL
 - BLACK CHERRY TREE - 7" GAL
 - AMERICAN SNOW BELL TREE - 3" GAL
 - STIFF DOGWOOD - 3" GAL

* EXACT PLANT SPECIES, SPACING AND LOCATION TO BE SUBMITTED BY LANDSCAPING SUBCONTRACTOR DURING CONSTRUCTION OF FINAL TALK PROFILES
 ** PROVIDE BRIDGERS FOR ALL LANDSCAPING SHOWN IN THIS CONTRACT



A1 MPC SITE PLAN W/ LANDSCAPING
 SCALE: 1:30



EXECUTIVE DIRECTOR APPROVAL
 By awCh
 Date 04/13/2020

Abrams
 Architecture and Design

FITE DEVELOPMENT
 LINE AVE
 SHREVEPORT, LA 71105

COPYRIGHT
 THESE DOCUMENTS ARE PROTECTED BY UNITED STATES COPYRIGHT LAW. THEY HAVE BEEN PREPARED SPECIFICALLY FOR THE PROJECT IDENTIFIED AND ARE NOT SUITABLE FOR USE ON ANY OTHER PROJECT OR AT ANY OTHER LOCATION WITHOUT THE EXPRESS WRITTEN APPROVAL AND PARTICIPATION OF ABRAMS ARCHITECTURE AND DESIGN. REPRODUCTION OF THESE DOCUMENTS MUST BE AUTHORIZED BY THE ARCHITECT. ALL RIGHTS ARE RESERVED TO ABRAMS ARCHITECTURE AND DESIGN.

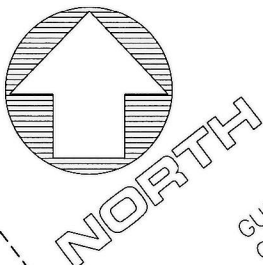
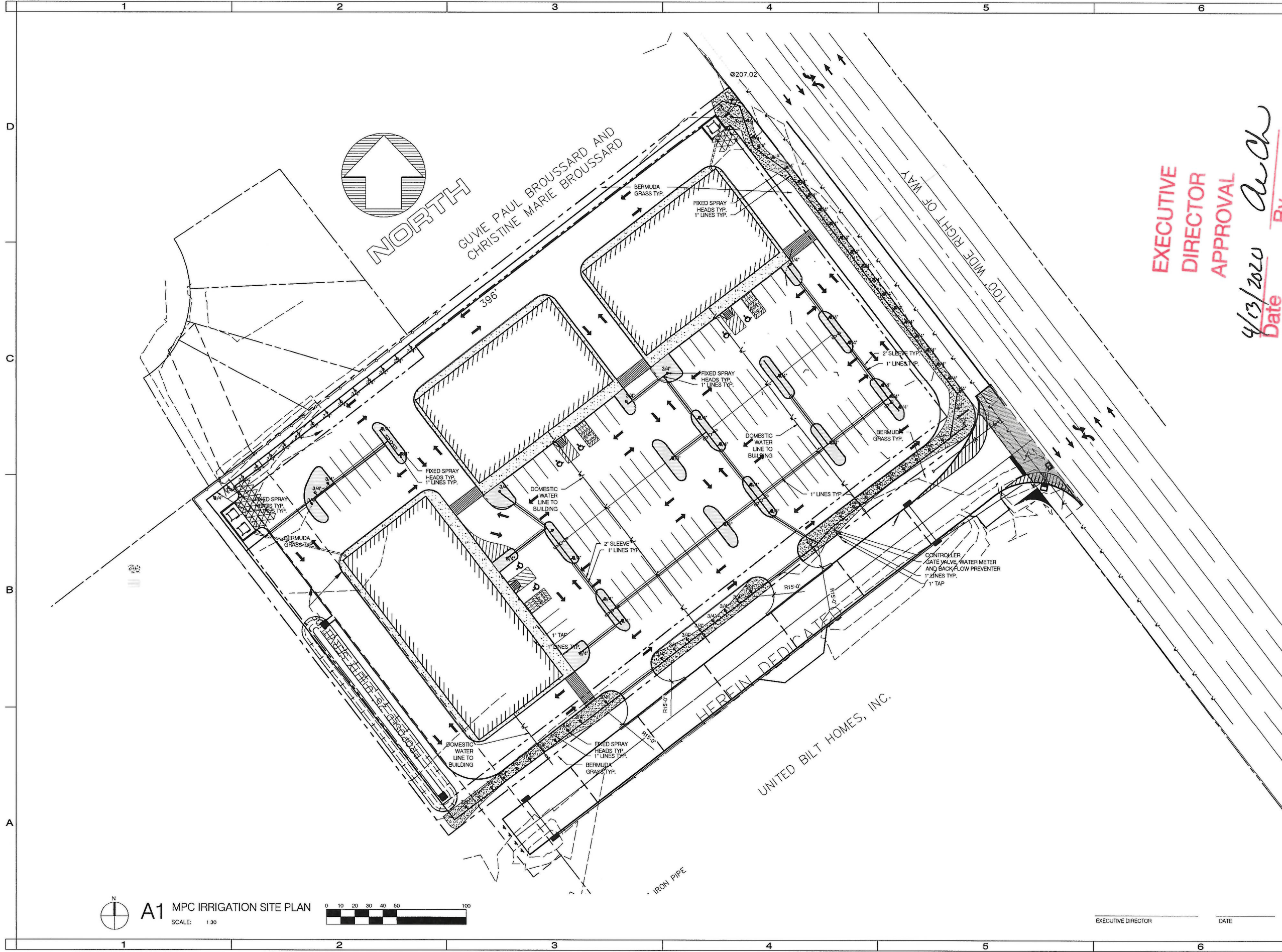
MPC SITE PLAN WITH LANDSCAPING

REVISIONS	PROJECT NO.
NO. DATE	AA 1823
1 03.06.20	SHEET
2 03.18.20	MPC1
3 03.30.20	
4 04.07.20	
5 04.09.20	

EXECUTIVE DIRECTOR _____ DATE _____

DATE 06.20.19

20-21-C



GUVIE PAUL BROUSSARD AND
CHRISTINE MARIE BROUSSARD

**EXECUTIVE
DIRECTOR
APPROVAL**

4/13/2020
Date *AcCh*
By

Abrams
Architecture and Design

FITE DEVELOPMENT
LINE AVE
SHREVEPORT, LA 71105

COPYRIGHT
THESE DOCUMENTS ARE PROTECTED BY UNITED STATES
COPYRIGHT LAW. THEY HAVE BEEN PREPARED SPECIFICALLY
FOR THE PROJECT IDENTIFIED AND ARE NOT SUITABLE FOR
USE ON ANY OTHER PROJECT OR AT ANY OTHER LOCATION
WITHOUT THE EXPRESS WRITTEN APPROVAL AND
PARTICIPATION OF ABRAMS ARCHITECTURE AND DESIGN.
REPRODUCTION OF THESE DOCUMENTS MUST BE AUTHORIZED
BY THE ARCHITECT. ALL RIGHTS ARE RESERVED TO ABRAMS
ARCHITECTURE AND DESIGN.

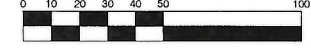
MPC
IRRIGATION
SITE PLAN

NO.	DATE	PROJECT NO.
1	03.06.20	AA 1823
2	03.18.20	SHEET
3	03.30.20	MPC2
4	04.07.20	
5	04.09.20	



A1 MPC IRRIGATION SITE PLAN

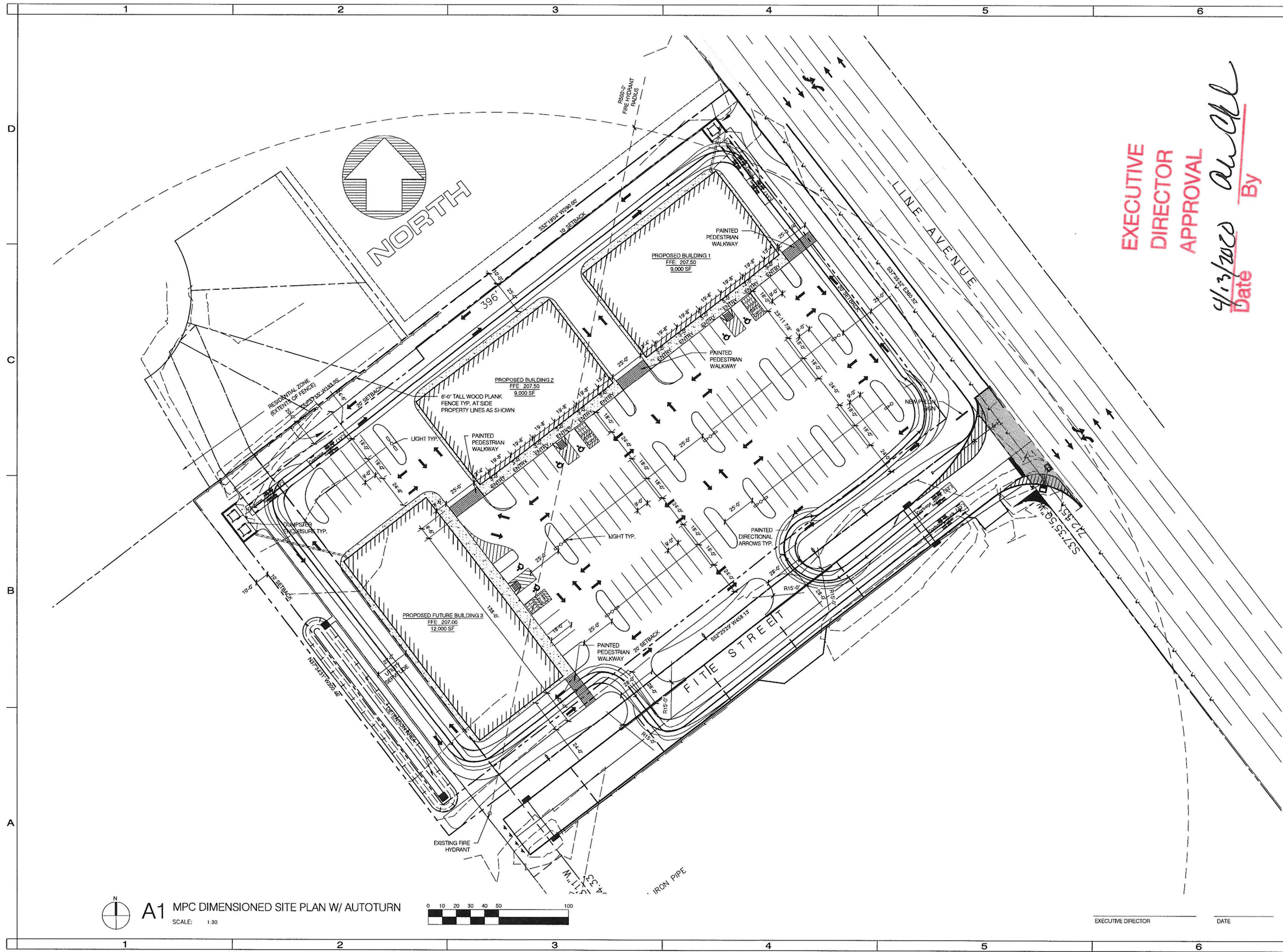
SCALE: 1:30



EXECUTIVE DIRECTOR _____ DATE _____

DATE 06.20.19

20-21-C



**EXECUTIVE
DIRECTOR
APPROVAL**

4/13/2020 *au* By *all*
Date

Abrams
Architecture and Design

FITE DEVELOPMENT
LINE AVE
SHREVEPORT, LA 71105

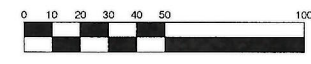
COPYRIGHT
THESE DOCUMENTS ARE PROTECTED BY UNITED STATES
COPYRIGHT LAWS. THEY HAVE BEEN PREPARED SPECIFICALLY
FOR THE PROJECT IDENTIFIED AND ARE NOT SUITABLE FOR
USE ON ANY OTHER PROJECT OR AT ANY OTHER LOCATION
WITHOUT THE EXPRESS WRITTEN APPROVAL AND
PARTICIPATION OF ABRAMS ARCHITECTURE AND DESIGN.
REPRODUCTION OF THESE DOCUMENTS MUST BE AUTHORIZED
BY THE ARCHITECT. ALL RIGHTS ARE RESERVED TO ABRAMS
ARCHITECTURE AND DESIGN.

MPC
DIMENSIONED
SITE PLAN
WITH
AUTOTURN

REVISIONS	PROJECT NO.
NO. DATE	AA 1823
1 03.06.20	SHEET
2 03.18.20	MPC3
3 03.30.20	
4 04.07.20	
5 04.09.20	



A1 MPC DIMENSIONED SITE PLAN W/ AUTOTURN
SCALE: 1:30



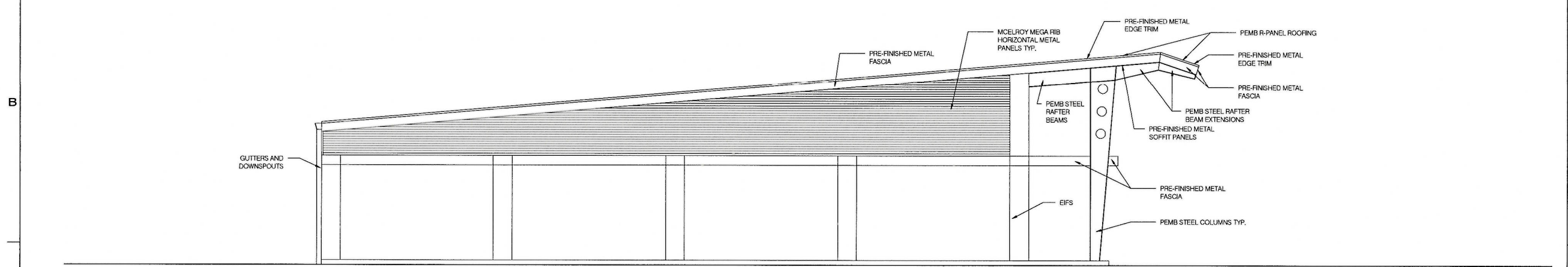
EXECUTIVE DIRECTOR _____ DATE _____

DATE 06.20.19

20-21-C



C1 EXTERIOR ELEVATIONS
SCALE: 3/16" = 1'-0"



A1 EXTERIOR ELEVATIONS
SCALE: 3/16" = 1'-0"

**EXECUTIVE
DIRECTOR
APPROVAL**

4/13/2020
Date By *Cliff Clark*

Abrams
Architecture and Design

FITE DEVELOPMENT
PHASE 1
8400 BLOCK OF LINE AVE
SHREVEPORT, LA 71106



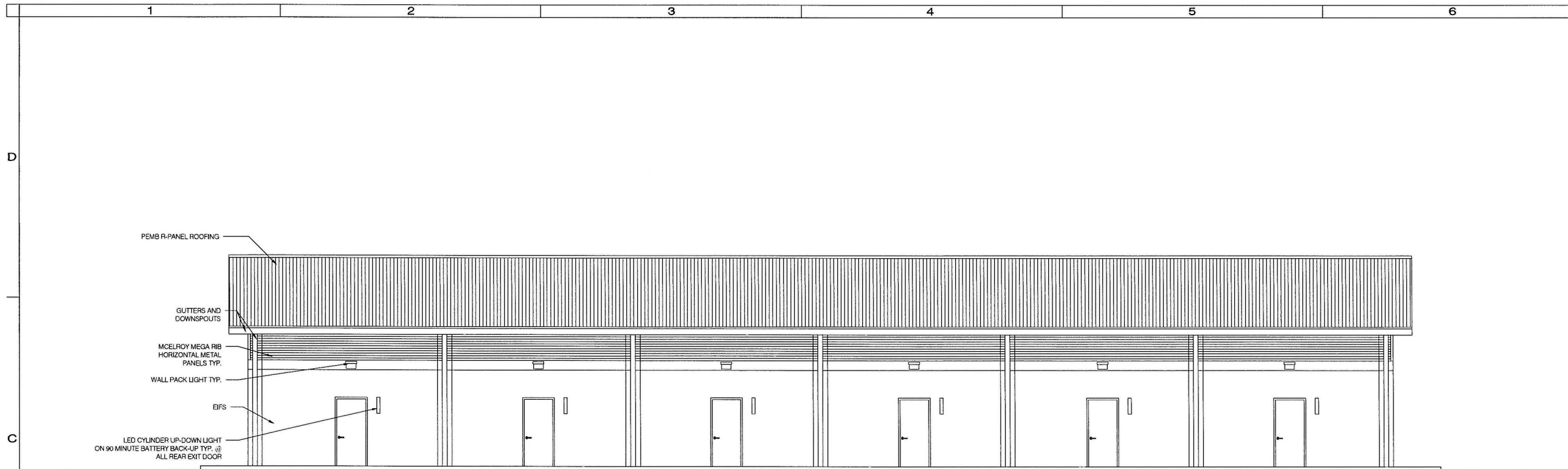
COPYRIGHT
THESE DOCUMENTS ARE PROTECTED BY UNITED STATES
COPYRIGHT LAW. THEY HAVE BEEN PREPARED SPECIFICALLY
FOR THE PROJECT IDENTIFIED AND ARE NOT SUITABLE FOR
USE ON ANY OTHER PROJECT OR AT ANY OTHER LOCATION
WITHOUT THE EXPRESS WRITTEN APPROVAL AND
PARTICIPATION OF ABRAMS ARCHITECTURE AND DESIGN.
REPRODUCTION OF THESE DOCUMENTS MUST BE AUTHORIZED
BY THE ARCHITECT. ALL RIGHTS ARE RESERVED TO ABRAMS
ARCHITECTURE AND DESIGN.

EXTERIOR
ELEVATIONS

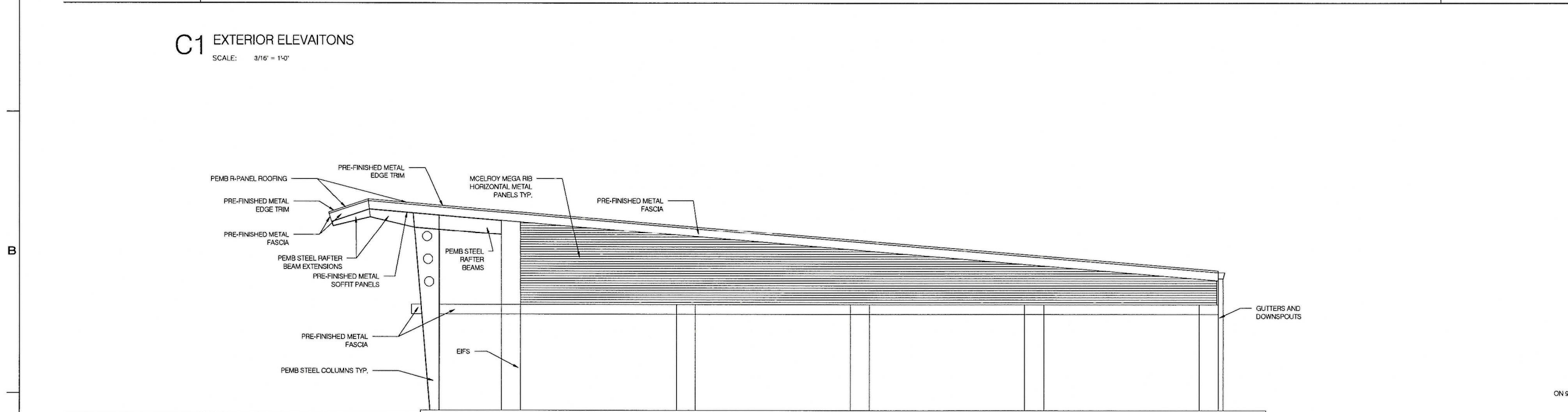
REVISIONS	PROJECT NO.
NO. DATE	AA 1823
1 XX.XX.XX	SHEET
	A3.01

DATE 09.12.19

20-21-C



C1 EXTERIOR ELEVATIONS
SCALE: 3/16" = 1'-0"



A1 EXTERIOR ELEVATIONS
SCALE: 3/16" = 1'-0"

**EXECUTIVE
DIRECTOR
APPROVAL**

4/13/2020
Date By *AK*

Abrams
Architecture and Design

FITE DEVELOPMENT
PHASE 1
8400 BLOCK OF LINE AVE
SHREVEPORT, LA 71106



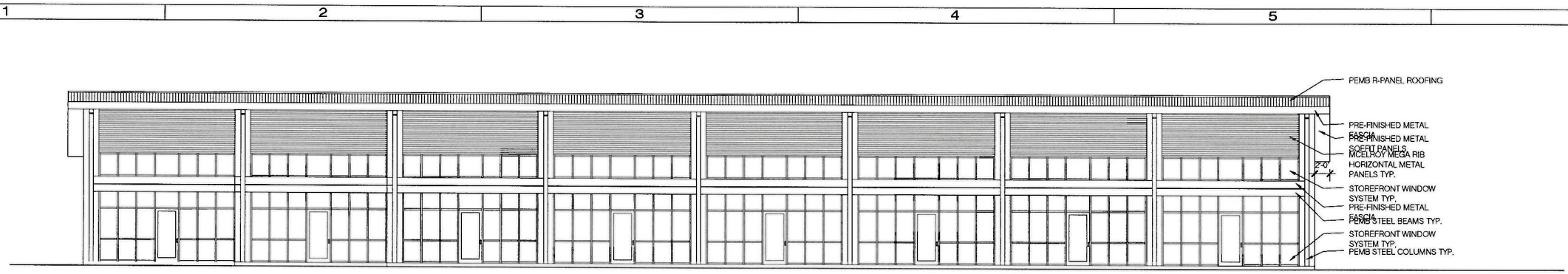
COPYRIGHT
THESE DOCUMENTS ARE PROTECTED BY UNITED STATES
COPYRIGHT LAW. THEY HAVE BEEN PREPARED SPECIFICALLY
FOR THE PROJECT IDENTIFIED AND ARE NOT SUITABLE FOR
USE ON ANY OTHER PROJECT OR AT ANY OTHER LOCATION
WITHOUT THE EXPRESS WRITTEN APPROVAL AND
PARTICIPATION OF ABRAMS ARCHITECTURE AND DESIGN.
REPRODUCTION OF THESE DOCUMENTS MUST BE AUTHORIZED
BY THE ARCHITECT. ALL RIGHTS ARE RESERVED TO ABRAMS
ARCHITECTURE AND DESIGN.

EXTERIOR
ELEVATIONS

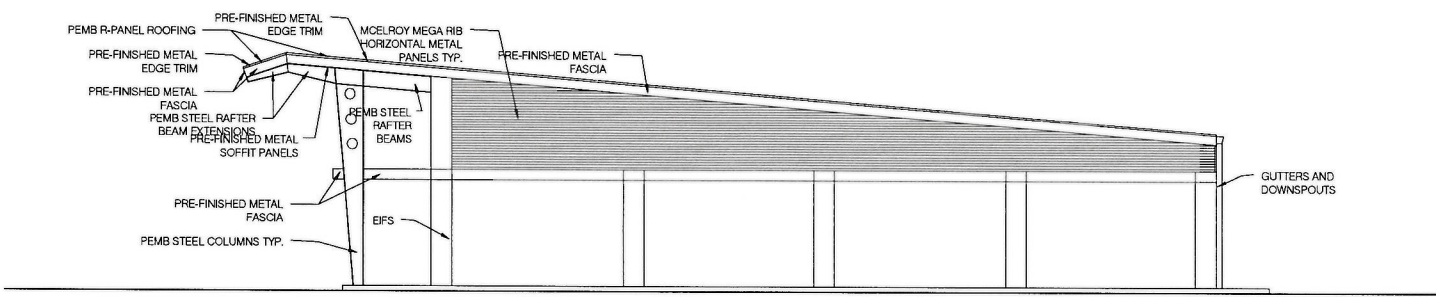
REVISIONS	PROJECT NO.
NO. DATE	AA 1823
1 XXXXXX	SHEET
	A3.02

DATE 09.12.19

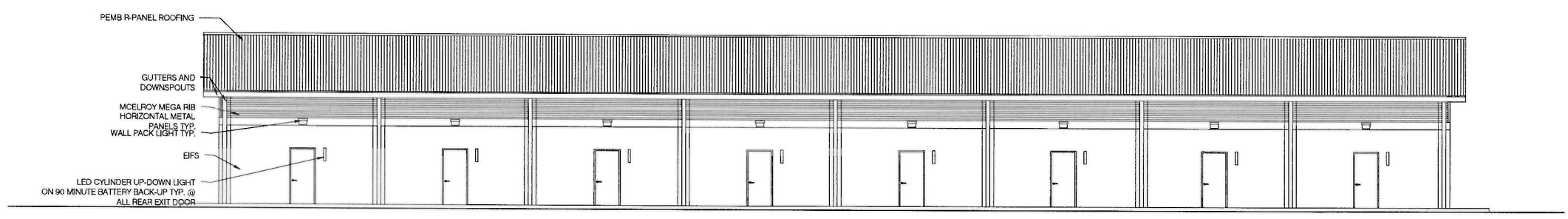
20-21-C



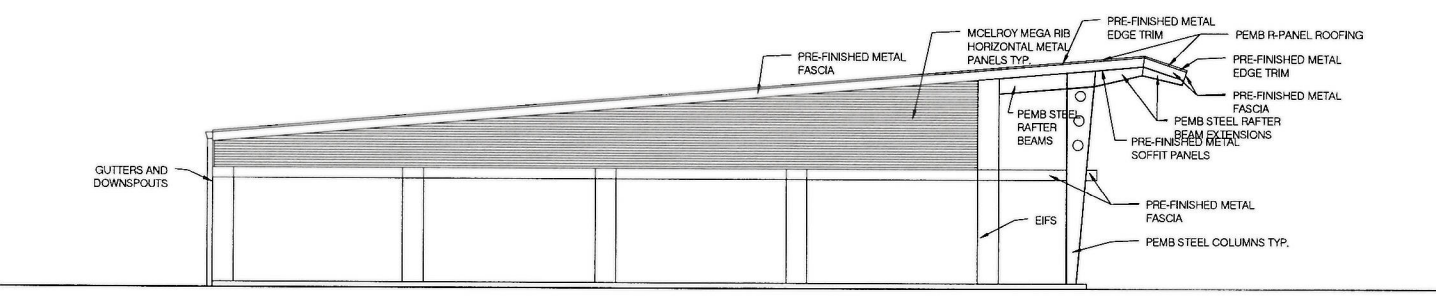
D1 EXTERIOR ELEVATIONS
SCALE: 3/16" = 1'-0"



C1 EXTERIOR ELEVATIONS
SCALE: 3/16" = 1'-0"



B1 EXTERIOR ELEVATIONS
SCALE: 3/16" = 1'-0"



A1 EXTERIOR ELEVATIONS
SCALE: 3/16" = 1'-0"

**EXECUTIVE
DIRECTOR
APPROVAL**
4/13/2020
Date By

Abrams
Architecture and Design

FITE DEVELOPMENT
PHASE 1
8400 BLOCK OF LINE AVE
SHREVEPORT, LA 71106



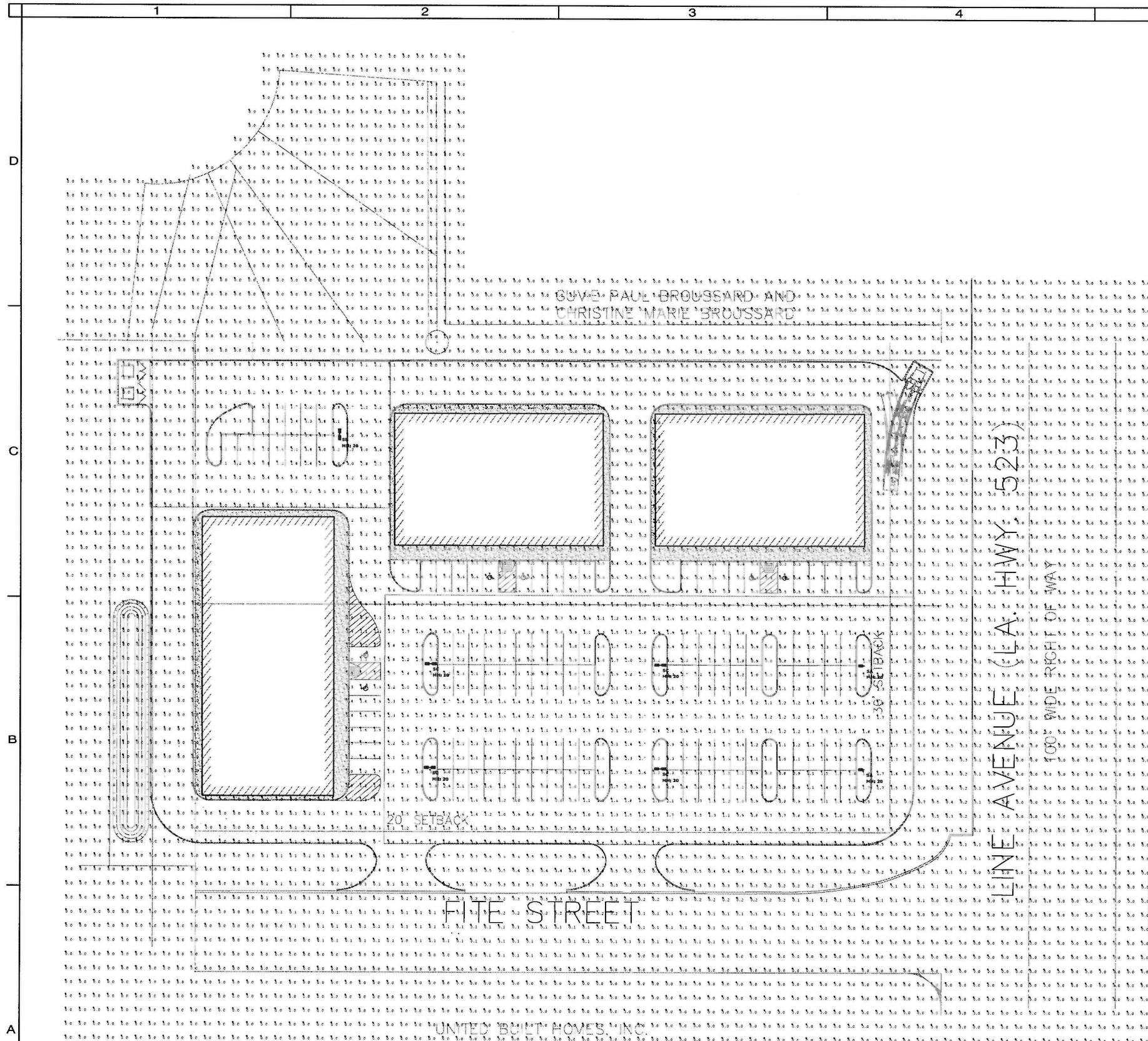
COPYRIGHT
THESE DOCUMENTS ARE PROTECTED BY UNITED STATES
COPYRIGHT LAW. THEY HAVE BEEN PREPARED SPECIFICALLY
FOR THE PROJECT IDENTIFIED AND ARE NOT SUITABLE FOR
USE ON ANY OTHER PROJECT OR AT ANY OTHER LOCATION
WITHOUT THE EXPRESS WRITTEN APPROVAL AND
PARTICIPATION OF ABRAMS ARCHITECTURE AND DESIGN.
REPRODUCTION OF THESE DOCUMENTS MUST BE AUTHORIZED
BY THE ARCHITECT. ALL RIGHTS ARE RESERVED TO ABRAMS
ARCHITECTURE AND DESIGN.

BUILDING 3
EXTERIOR
ELEVATIONS

REVISIONS	PROJECT NO.
NO. DATE	AA 1823
1 03.06.20	SHEET
	MPC3

DATE 09.12.19

20-11-C



SITE PLAN - ELECTRICAL LIGHTING LAYOUT AND CALCUATIONS
 SCALE: 1"=30'-0"

**EXECUTIVE
 DIRECTOR
 APPROVAL**
 By *[Signature]*
 Date 4/13/2020

LIGHTING FIXTURE SCHEDULE					
MARK	TYPE	MOUNTING	MANUFACTURER CATALOG NO.	LAMPS QTY & TYPE	DESCRIPTION
SA	ARCHITECTURAL AREA POLE LIGHT SINGLE ARM ASS'Y	POLE ARM	LITHONIA DSKO LED P4 40K TSM MVOLT	120/277	SQUARE STEEL POLE; 20'; VERIFY COLOR; 100MPH/1.3 GUST NO EXPOSED HARDWARE; FULL CUTOFF
SB	ARCHITECTURAL AREA POLE LIGHT TWO MOUNT ASSY AT 180'	POLE ARM	LITHONIA DSKO LED P3 40K TSM MVOLT	120/277	SQUARE STEEL POLE; 20'; VERIFY COLOR; 100MPH/1.3 GUST NO EXPOSED HARDWARE; FULL CUTOFF
SC	ARCHITECTURAL AREA POLE LIGHT TWO MOUNT ASSY AT 180'	POLE ARM	LITHONIA DSKO LED P4 40K TSM MVOLT	120/277	SQUARE STEEL POLE; 20'; VERIFY COLOR; 100MPH/1.3 GUST NO EXPOSED HARDWARE; FULL CUTOFF

COPYRIGHT THESE DOCUMENTS ARE PROTECTED BY UNITED STATES COPYRIGHT LAW. THEY HAVE BEEN PREPARED SPECIFICALLY FOR THE PROJECT IDENTIFIED AND ARE NOT SUITABLE FOR USE ON ANY OTHER PROJECT OR AT ANY OTHER LOCATION. WITHOUT THE EXPRESS WRITTEN APPROVAL AND PARTICIPATION OF ABRAMS ARCHITECTURE AND DESIGN, REPRODUCTION OF THESE DOCUMENTS MUST BE AUTHORIZED BY THE ARCHITECT. ALL RIGHTS ARE RESERVED TO ABRAMS ARCHITECTURE AND DESIGN.

**SITE PLAN -
 ELECTRICAL
 LIGHTING
 LAYOUT &
 CALCULATIONS**

REVISIONS	PROJECT NO:
NO DATE	AA 1823
1 XXXXXX	SHEET
	ME1.2

DATE 06.20.19

P+A
 FURTELL & ASSOCIATES
 CONSULTING ENGINEERS
 9441 STEVENS ROAD, SUITE 200
 SHREVEPORT, LOUISIANA 71106
 318 425 4500
 318 222 6564
 furte@paurt.com PA-20040
 Louisiana Registered Engineering Firm #1-254

20-21-C