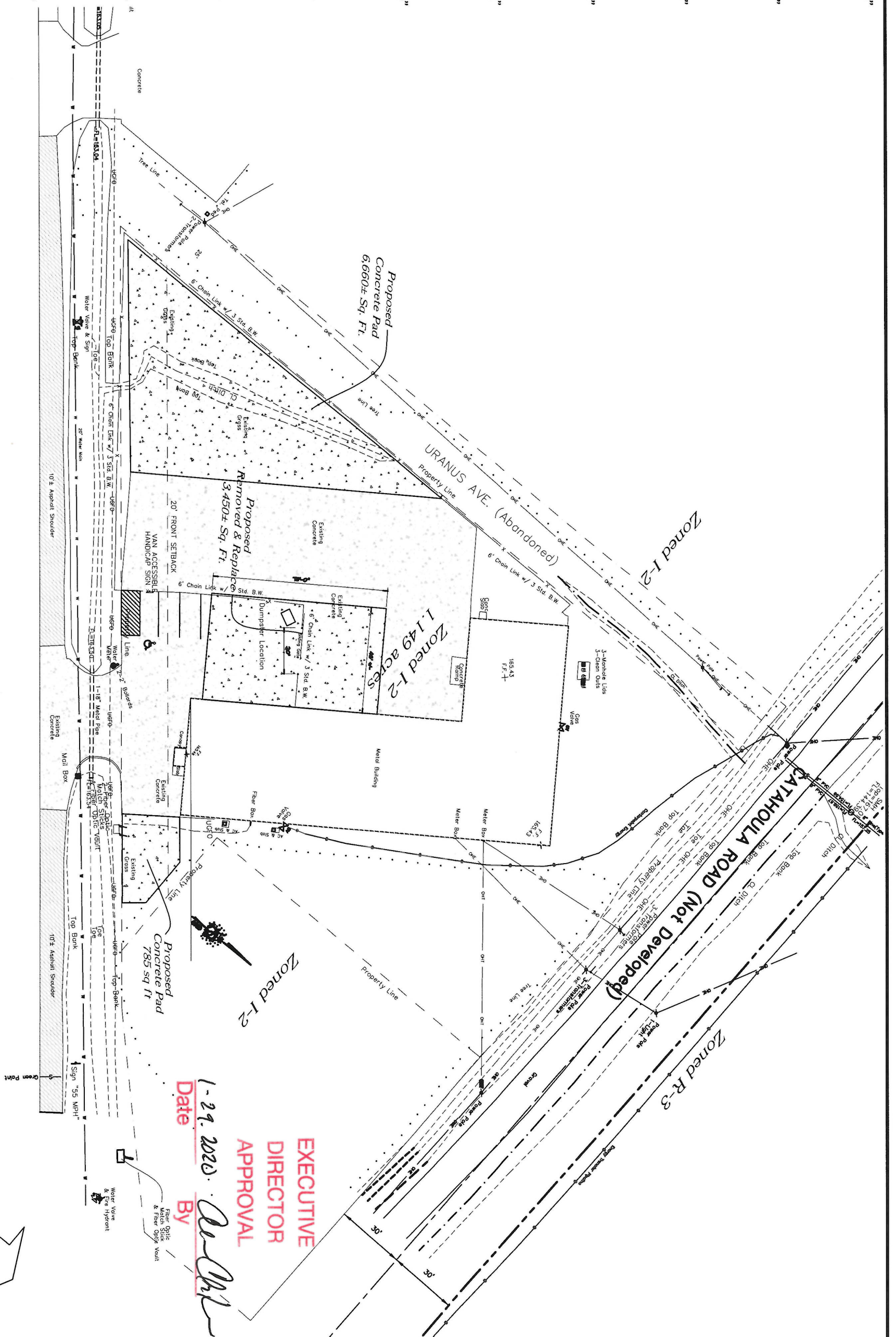


20" - REDUCE OR ENLARGE DRAWING AS REQUIRED

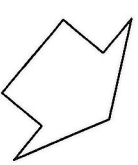


HEARNE AVE. (LA HWY 3094)

EXECUTIVE DIRECTOR APPROVAL
 Date: 1-29-2020
 By: [Signature]

SCALE 1"=20'

20-15-C

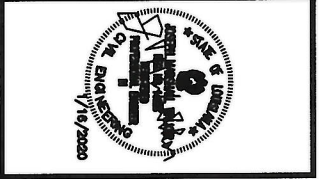


Sheet	C1
OF	4C

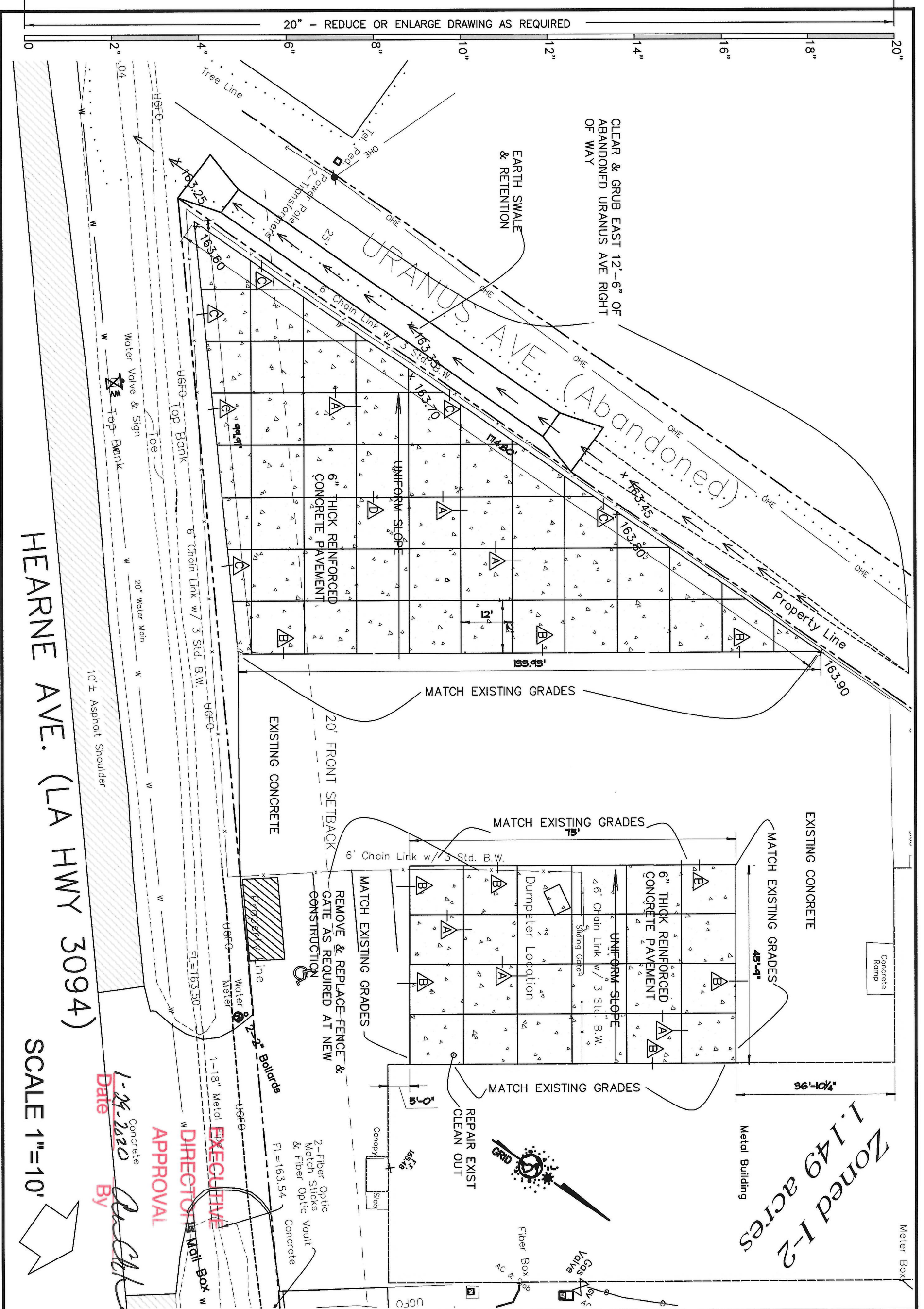
PAVEMENT IMPROVEMENTS
 UNIVERSAL WELLHEAD SERVICES
 1710 NORTH HEARNE AVENUE
 SHREVEPORT, LOUISIANA 71107

NO.	DATE	DESCRIPTION

WALKER & WALKER ARCHITECTS/ENGINEERS
 POST OFFICE BOX 44283
 SHREVEPORT, LOUISIANA 71134-4283
 wwaxx1@gmail.com
 phone 318-453-7986



20" - REDUCE OR ENLARGE DRAWING AS REQUIRED



CLEAR & GRUB EAST 12'-6" OF ABANDONED URANUS AVE RIGHT OF WAY

HEARNE AVE. (LA HWY 3094)

SCALE 1"=10'

20-15-C

Concrete
Date: 1-25-2020
By: [Signature]

EXECUTIVE
APPROVAL
DIRECTOR OF MAIL BOX

Zoned I-2
1.149 acres

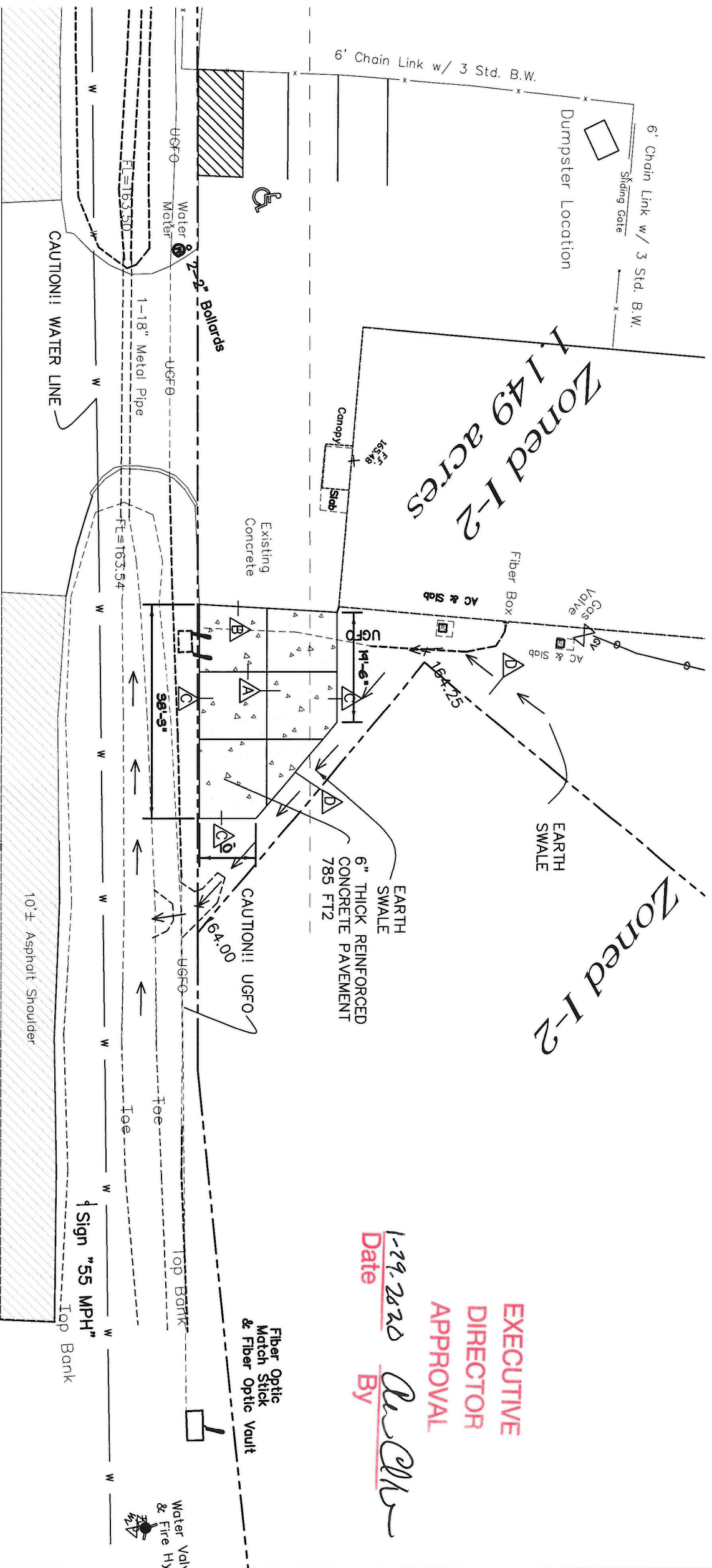
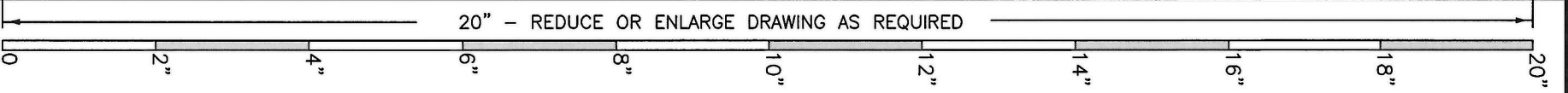
PAVEMENT IMPROVEMENTS
UNIVERSAL WELLHEAD SERVICES
1710 NORTH HEARNE AVENUE
SHREVEPORT, LOUISIANA 71107

WALKER & WALKER ARCHITECTS/ENGINEERS
POST OFFICE BOX 44283
SHREVEPORT, LOUISIANA 71134-4283
wwaex1@gmail.com
phone 318-453-7986



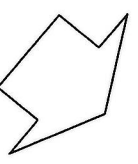
REV. NO.	DESCRIPTION	DATE	BY

Sheet: **C2**
OF 4C



HEARNE AVE. (LA HWY 3094)

SCALE 1"=10'



EXECUTIVE DIRECTOR APPROVAL
 Date 1-29-2020 By [Signature]



WALKER & WALKER ARCHITECTS/ENGINEERS
 POST OFFICE BOX 44283
 SHREVEPORT, LOUISIANA 71134-4283
 waexx1@gmail.com
 phone 318-453-7986

PAVEMENT IMPROVEMENTS
 UNIVERSAL WELLHEAD SERVICES
 1710 NORTH HEARNE AVENUE
 SHREVEPORT, LOUISIANA 71107

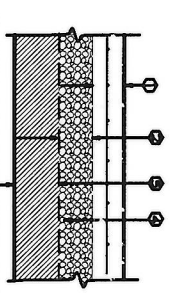
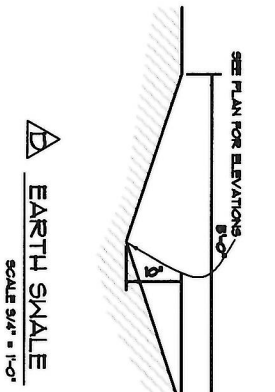
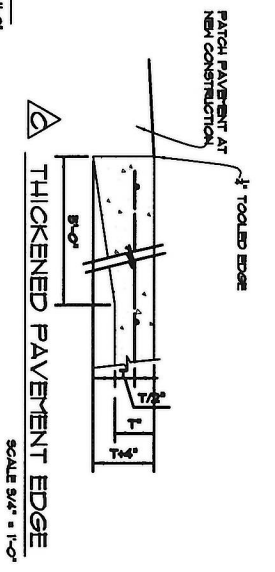
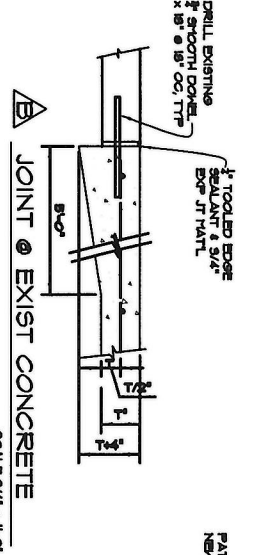
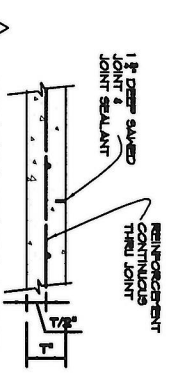
REV. NO.	DESCRIPTION	DATE	BY

Date: JAN 18, 2020
 Job Number: 15-008
 Drawn: JMW
 Ck'd By: JMW
C3
 OF 4C

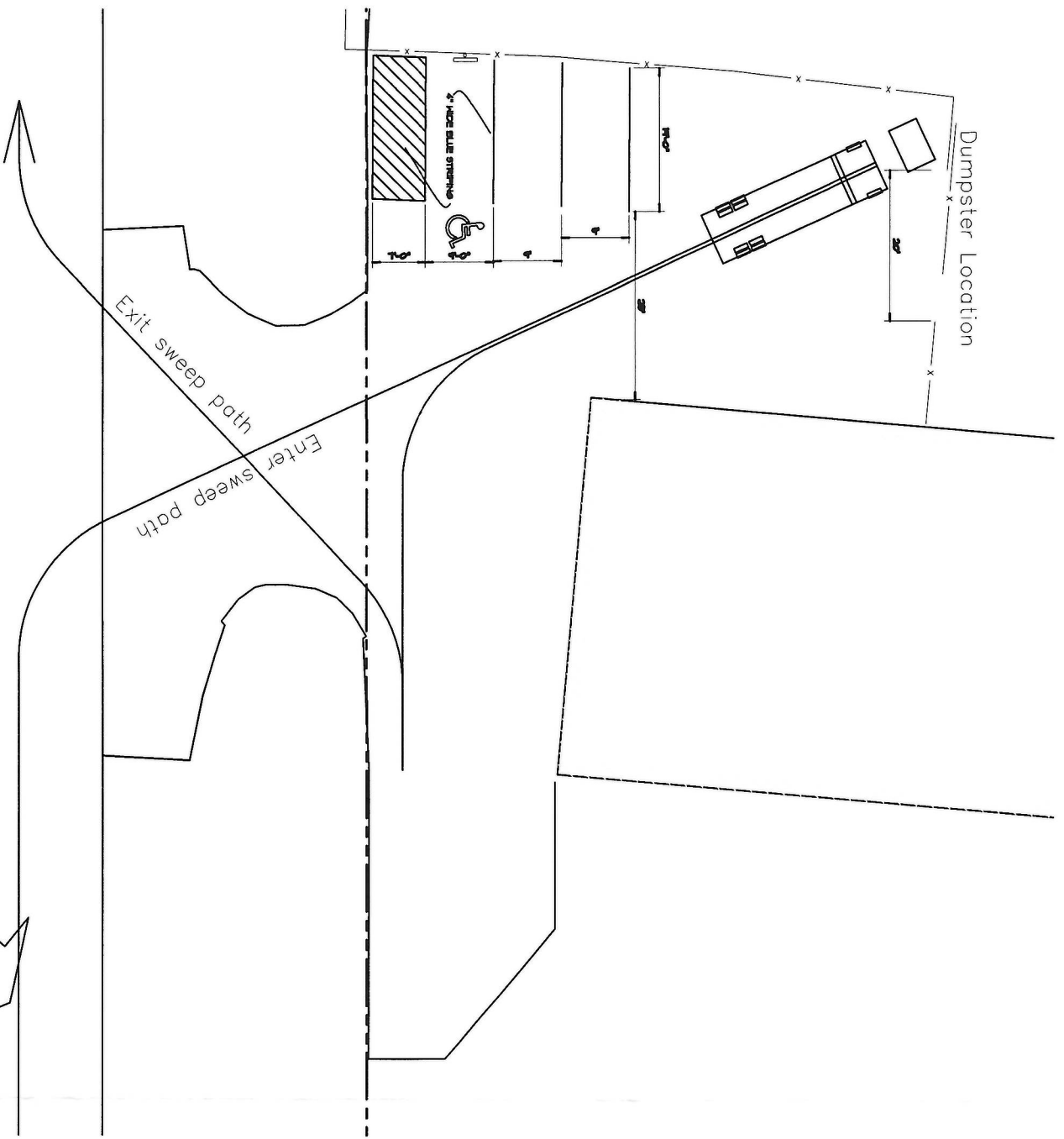
20-15-C

20" - REDUCE OR ENLARGE DRAWING AS REQUIRED

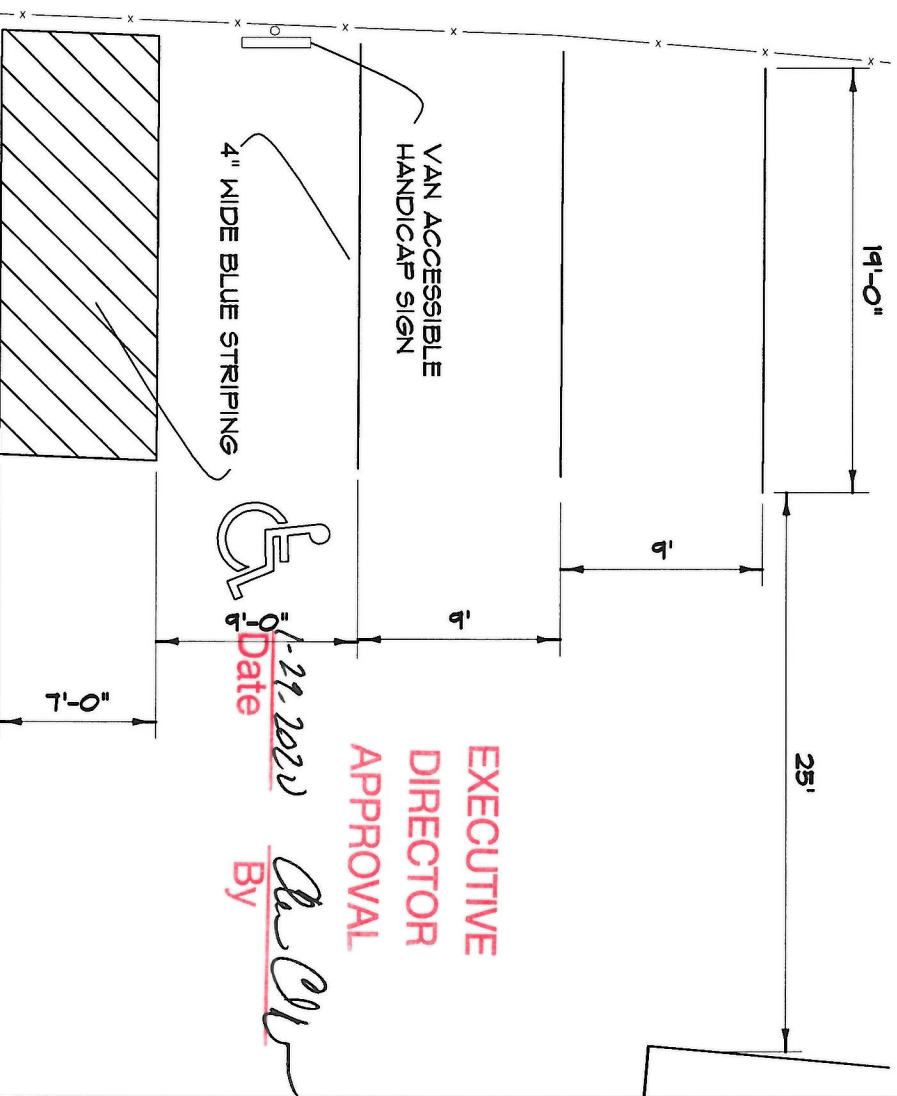
0 2" 4" 6" 8" 10" 12" 14" 16" 18" 20"



1. 6" PORTLAND CEMENT CONCRETE 4000 PSI @ 28 DAYS. ALL JOINTS TO BE CONCRETE MATCHED DEPTH. COMPACTED TO AT LEAST 95% HAVENHUT DRY DENSITY - ASTM D 698
2. EXISTING SUB-GRADE COURSE, SCALIMBED BY THICK FOISTUNE CONTENT ADJUSTED TO BE BELOW 1/2" ABOVE OPTIMUM, & CORRECTED TO AT LEAST 95% HAVENHUT DRY DENSITY - ASTM D 698
3. SITE PREPARATION - REMOVE 6" EXISTING ORGANIC LOOSE SOILS



DUMPSTER SWEEP PATHS
SCALE 1" = 10'-0"



HANDICAP PARKING
SCALE 1/4" = 1'-0"

EXECUTIVE DIRECTOR APPROVAL

REV. NO.	DESCRIPTION	DATE	BY

WALKER & WALKER ARCHITECTS/ENGINEERS
POST OFFICE BOX 44283
SHREVEPORT, LOUISIANA 71134-4283
www.aexx1@gmail.com
phone 318-453-7986



PAVEMENT IMPROVEMENTS
UNIVERSAL WELLHEAD SERVICES
1710 NORTH HEARNE AVENUE
SHREVEPORT, LOUISIANA 71107

Date	Job Number
JAN 16, 2020	15-008
Drawn By: JMW	Chk. By: JMW

C4
OF 4C

20-15-C