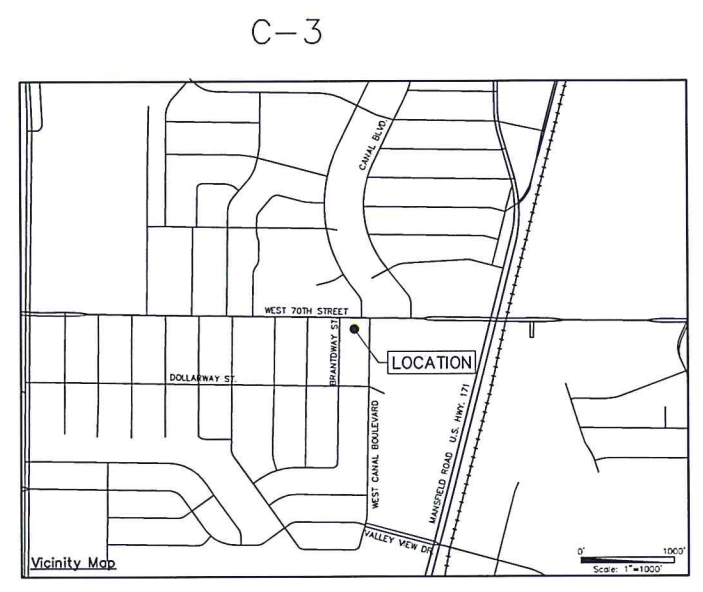
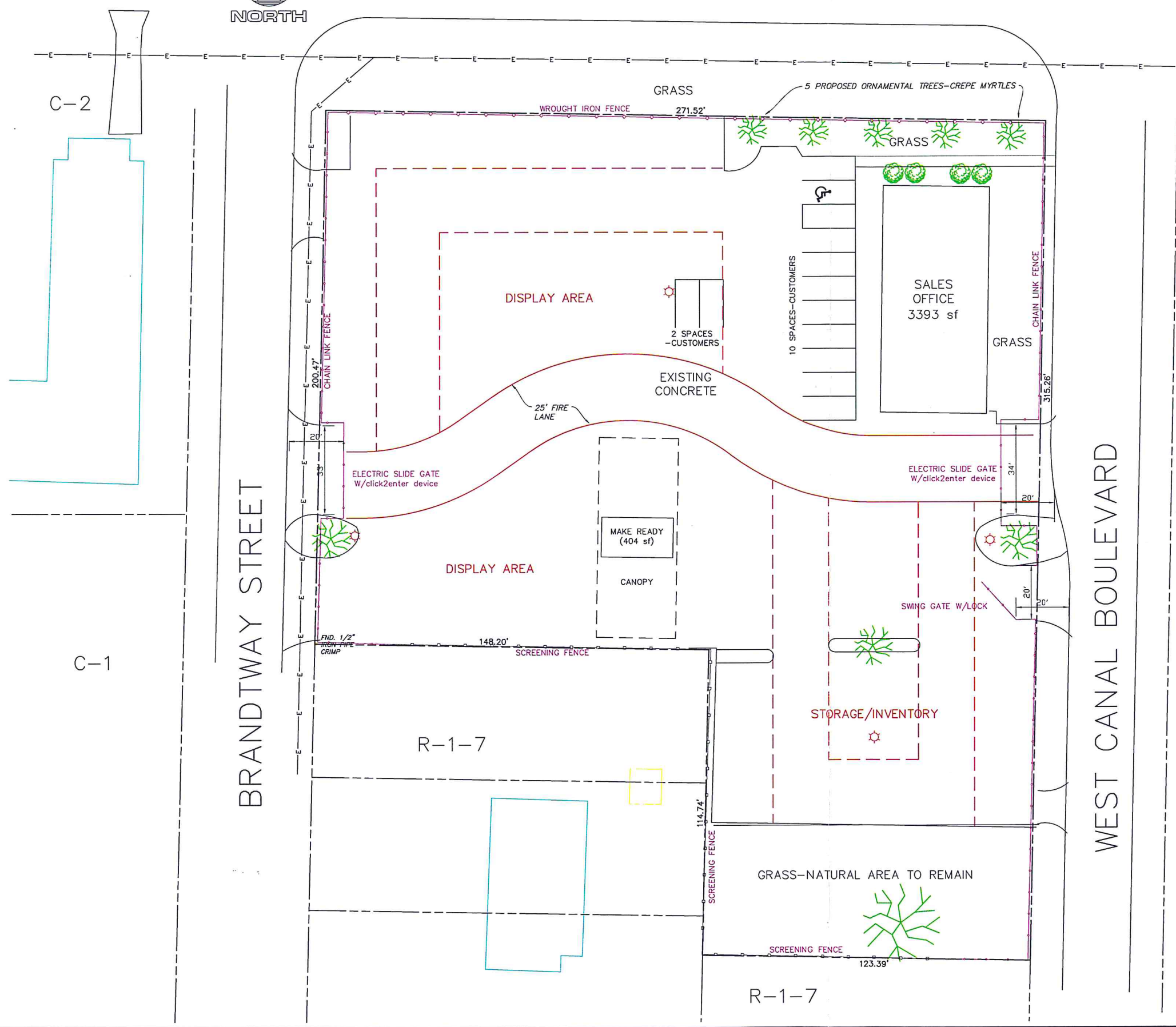


9/22/2018 4:47:55 PM J:\STUDIES\PIPES 70TH STREET\2911 W. 70TH ST.MPC SITE PLAN 24 DISPLAY.DWG



WEST 70TH STREET — LA. HWY. 511



⊛ ALL LIGHT POLES ARE EXISTING  
 NO DUMPSTER—CURBSIDE PICKUP

**MPC APPROVED**  
 9/21/18 Date APPROVED By *OC*

MPC Executive Director Date

NO.	REVISIONS	DATE

<b>Mohr and Associates, Inc.</b> Consulting Civil Engineers & Land Surveyors 1324 N. Hearne Ave., Ste 301 Phone: (318) 686-7190 Shreveport, Louisiana 71107 Fax: (318) 402-4400	
PIPES AUTO-2911 WEST 70TH STREET FOR: SPECIAL USE PERMIT SITE PLAN	
Date	7-20-2018
Scale	1"=20'
Job	36865
Drawn	DBA
Sheet	1
of	1 Sheets

C-57-18