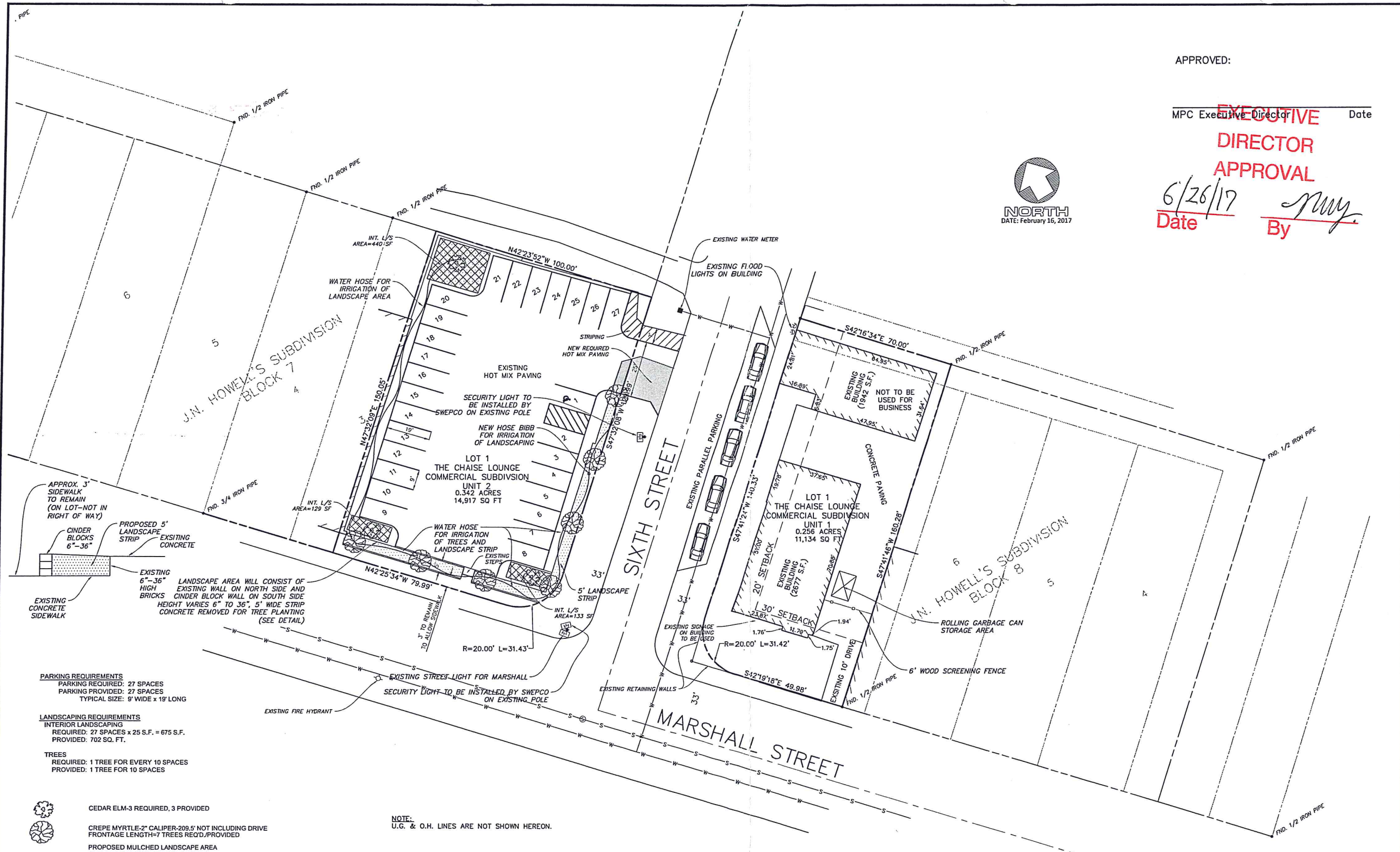


5/20/2017 11:48:17 AM J:\CIVIL\SITE PLANS\CHAISE LOUNGE\36196-SITE.DWG



APPROVED:

MPC Executive Director _____ Date _____

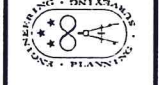
**EXECUTIVE
DIRECTOR
APPROVAL**

Date 6/26/17 By [Signature]



NO.	REVISIONS	DATE
1	ADDED LIGHTS, IRRIGATION, GARBAGE CAN AREA AND EDITED WALL HT.	3/31/2017
2	LANDSCAPE DETAIL, INTERIOR LANDSCAPING, HOT MIX REMOVAL, MAIN LOCATIONS	4/21/2017
3	ADDED INTERIOR LANDSCAPING IND. SF	5/22/2017
4	REQUITED WATER HOSE TO CORNER	5/29/2017

Mohr and Associates, Inc.
 Consulting Civil Engineers & Land Surveyors
 1324 N. Hearne Ave., Ste 301 Phone: (318) 686-7190
 Shreveport, Louisiana 71107 Fax: (318) 402-4400



THE CHAISE LOUNGE, LLC 2205
 BECKETT STREET BOSSIER CITY, LA 71111
 DEWAYNE BAKER 318-780-1134
 FOR: SITE PLAN FOR THE CHAISE LOUNGE

Date	2-16-2017
Scale	1"=20'
Job	36196
Drawn	DBA
Sheet	1
of	1 Sheets

- PARKING REQUIREMENTS**
 PARKING REQUIRED: 27 SPACES
 PARKING PROVIDED: 27 SPACES
 TYPICAL SIZE: 8' WIDE x 19' LONG
- LANDSCAPING REQUIREMENTS**
 INTERIOR LANDSCAPING
 REQUIRED: 27 SPACES x 25 S.F. = 675 S.F.
 PROVIDED: 702 SQ. FT.
- TREES**
 REQUIRED: 1 TREE FOR EVERY 10 SPACES
 PROVIDED: 1 TREE FOR 10 SPACES

- CEDAR ELM-3 REQUIRED, 3 PROVIDED
- CREPE MYRTLE-2" CALIPER-209.5' NOT INCLUDING DRIVE FRONTAGE LENGTH=7 TREES REQ'D/PROVIDED
- PROPOSED MULCHED LANDSCAPE AREA AND LANDSCAPE STRIP CONSISTS OF INDIAN HAWTHORNE, LIGUSTRUM, NANDINA, JUNIPER, ROSES, DAY LILY, HOLLY, BERMUDA GRASS SOD
- HOT MIX REMOVAL

NOTE:
 U.G. & O.H. LINES ARE NOT SHOWN HEREON.

NOTE:
 THIS DRAWING REPRESENTS A SITE PLAN ONLY AND IS NOT A SURVEY. THIS DRAWING IS NOT IN CONFORMANCE WITH THE LA. STANDARDS OF PRACTICE FOR PROPERTY BOUNDARY SURVEYS.

SITE PLAN
 LOT 1, THE CHAISE LOUNGE COMMERCIAL SUBDIVISION UNITS 1 AND 2, CADDO PARISH, LOUISIANA