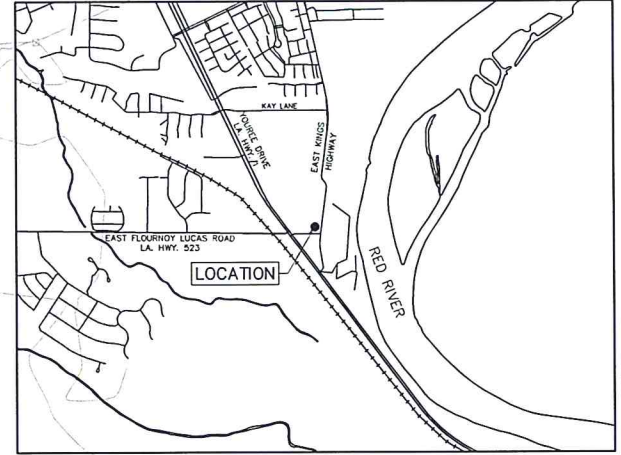
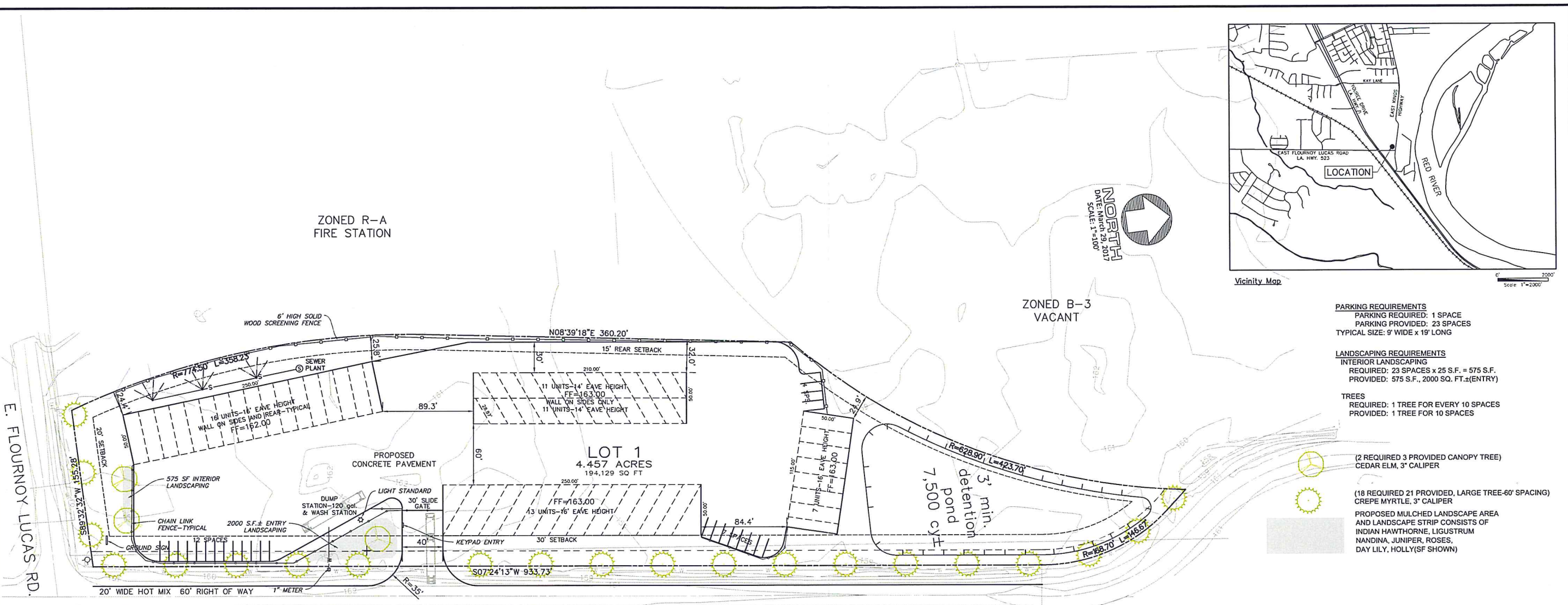
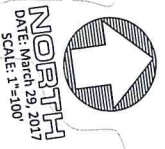


ZONED R-A
FIRE STATION

ZONED B-3
VACANT



Vicinity Map



PARKING REQUIREMENTS
 PARKING REQUIRED: 1 SPACE
 PARKING PROVIDED: 23 SPACES
 TYPICAL SIZE: 9' WIDE x 19' LONG

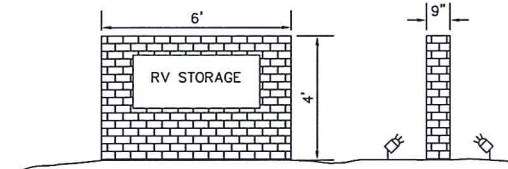
LANDSCAPING REQUIREMENTS
INTERIOR LANDSCAPING
 REQUIRED: 23 SPACES x 25 S.F. = 575 S.F.
 PROVIDED: 575 S.F., 2000 SQ. FT. (ENTRY)

TREES
 REQUIRED: 1 TREE FOR EVERY 10 SPACES
 PROVIDED: 1 TREE FOR 10 SPACES

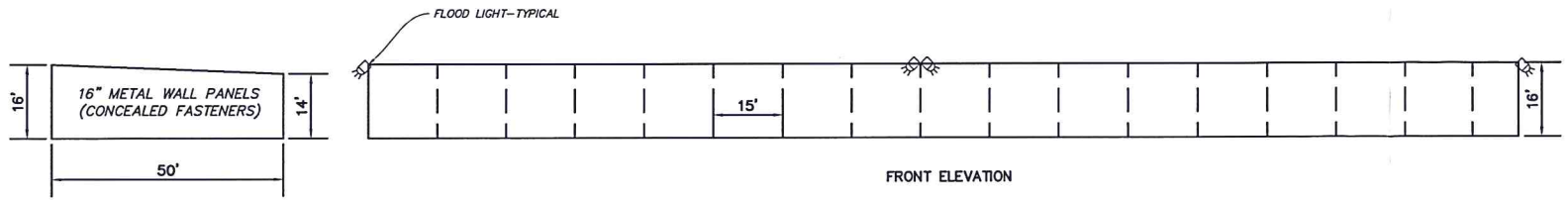
(2 REQUIRED 3 PROVIDED CANOPY TREE)
 CEDAR ELM, 3" CALIPER

(18 REQUIRED 21 PROVIDED, LARGE TREE-60' SPACING)
 CREPE MYRTLE, 3" CALIPER
 PROPOSED MULCHED LANDSCAPE AREA
 AND LANDSCAPE STRIP CONSISTS OF
 INDIAN HAWTHORNE, LIGUSTRUM
 NANDINA, JUNIPER, ROSES,
 DAY LILY, HOLLY(SF SHOWN)

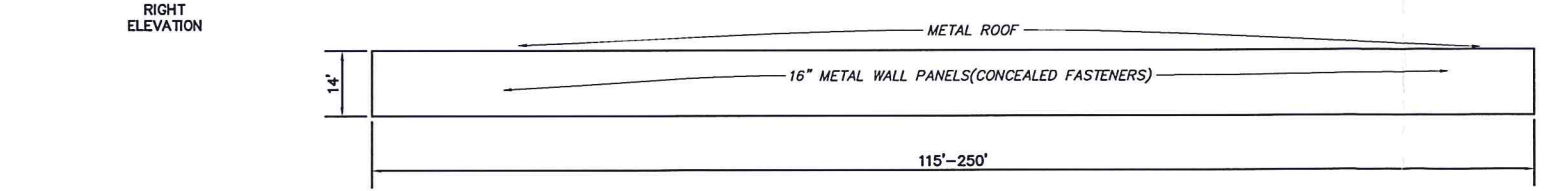
EAST KINGS HIGHWAY



GROUND SIGN DETAIL
NOT TO SCALE



FRONT ELEVATION



RIGHT ELEVATION

REAR ELEVATION

**EXECUTIVE
DIRECTOR
APPROVAL**

7/10/17 Date By *MW*

APPROVED:

MPC Executive Director Date

TRACT IS LOCATED IN ZONE "X" (SHADED)
 AS PER FEMA MAP NUMBER 22017C0489H
 EFFECTIVE DATE MAY 19, 2014.
 ALL BUILDING ELEVATIONS WILL BE 162.00 MINIMUM.

2 yr. pre=1.6 cfs
 10 yr. pre=2.9 cfs
 25 yr. post=3.45 cfs

LOT 1 KING'S BEND SUBDIVISION, UNIT NO.
 1 4.457 ACRES, CADDO PARISH, LOUISIANA

6/21/2017 11:09:47 AM J:\STUDIES\WIMBERLY STORAGE EAST KINGS EAST FLOURNOY LUCAS\36200 MPC SITE PLAN.DWG

NO.	REVISIONS	DATE

Mohr and Associates, Inc. Consulting Civil Engineers & Land Surveyors 1324 N. Hearne Ave., Ste 301 Phone : (318) 686-7190 Shreveport, Louisiana 71107 Fax : (318) 402-4400	
WIMWAL, LLC 9026 WISTERIAN WAY SHREVEPORT, LA 71106	FOR: JOHNNY WIMBERLY - RV STORAGE FACILITY
Date	3-29-2017
Scale	1"=50'
Job	36200
Sheet	DBA
of	Sheets