



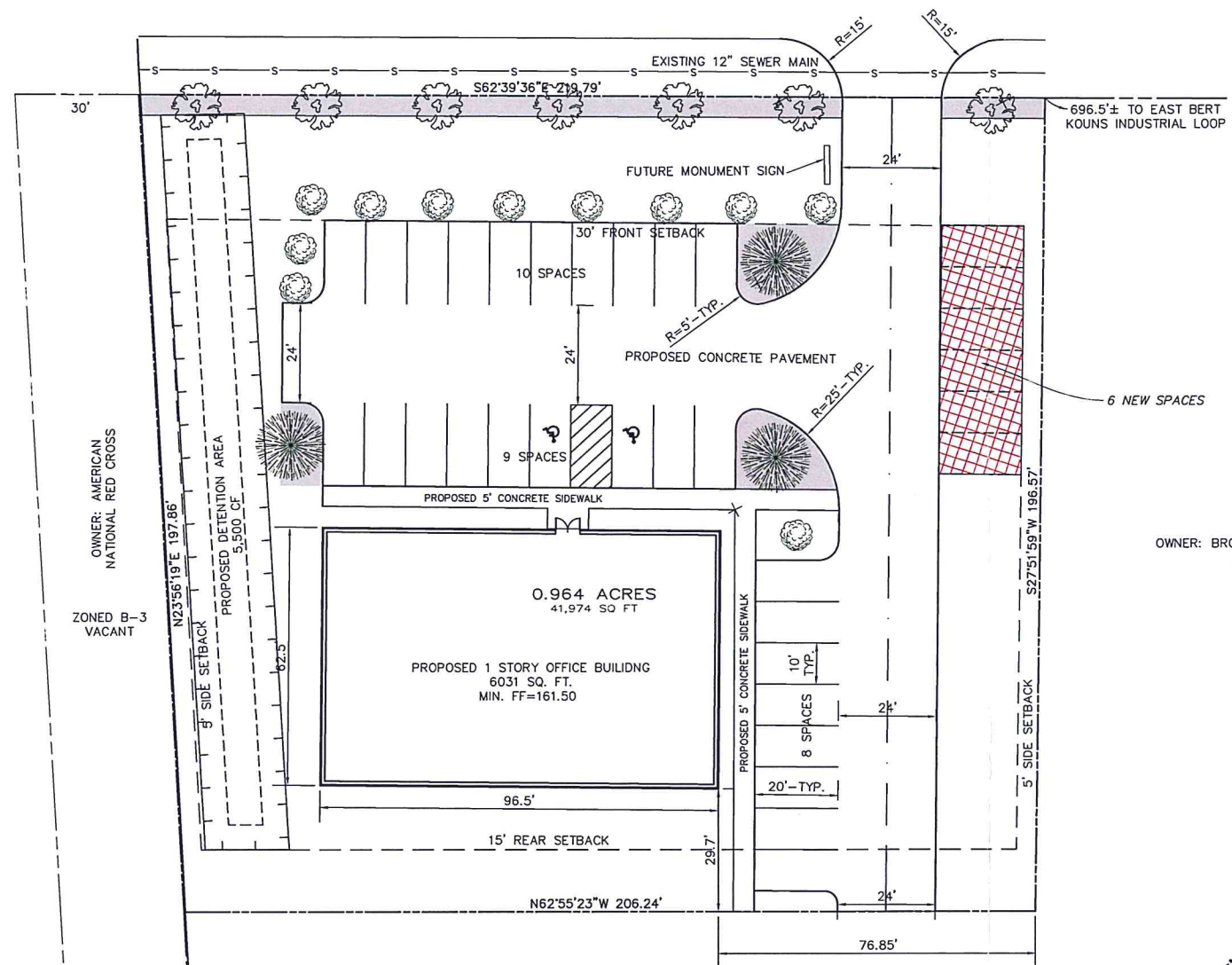
DATE: July 20, 2017



### BROOK HOLLOW DRIVE

(60' WIDE R/W PER BK 2050, PGS. 131-133)

EXISTING 32' WIDE CONCRETE PAVEMENT



LOT 1  
BROOK HOLLOW  
SUBDIVISION UNIT NO. 7  
OWNER: AMERICAN  
NATIONAL RED CROSS


OWNER: AMERICAN  
NATIONAL RED CROSS  
ZONED B-3  
VACANT

OWNER: BROOK HOLLOW BUSINESS PARK, LLC  
INST. #2208905  
ZONED B-3  
VACANT

OWNER: BROOK HOLLOW BUSINESS PARK, LLC  
INST. #2208905  
ZONED B-3  
VACANT

- LANDSCAPING SCHEDULE**
-  CEDAR ELM (MIN. 3" CALIPER)  
3 REQUIRED AND PROVIDED
  -  CRAPE MYRTLE (MIN. 3" CALIPER)  
(30' SPACING-APPROX. 7 TREES)
  -  INDIAN HAWTHORNE-APPROX. 10
-  MULCHED LANDSCAPE AREA  
AND LANDSCAPE STRIP CONSISTS OF  
SHRUBS, GROUND COVER, PLANTS  
600 sq. ft. REQUIRED, 720± sq. ft. PROVIDED

**EXECUTIVE  
DIRECTOR  
APPROVAL**

8/1/17  
Date By 

**REVISED:**

EXISTING ZONING: B-3  
FLOOD ZONE: "AE"

**PARKING REQUIREMENTS**  
PARKING REQUIRED: 24 SPACES  
PARKING PROVIDED: 27 SPACES  
TYPICAL SIZE: 10' WIDE x 20' LONG



**Mohr and Associates, Inc.**  
*Consulting Civil Engineers & Land Surveyors*  
1324 N. Hearne Ave., Ste 301 Phone: (318) 686-7190  
Shreveport, Louisiana 71107 Fax: (318) 402-4400

**OWNERSHIP:**  
BROOK HOLLOW BUSINESS PARK, LLC, ROBERT TUFTS, 700 S US HWY. 1, UNIT 106, JUPITER, FLORIDA 33477 985.869.6700  
SECTION 32, T17N-R13W, 0.964 ACRES, SHREVEPORT, CADDO PARISH, LOUISIANA JULY 20, 2017  
2015