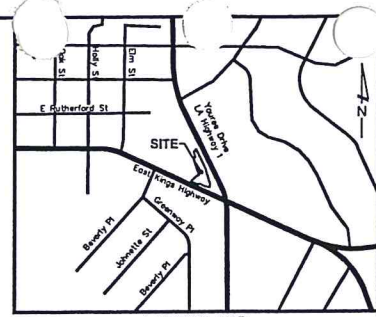
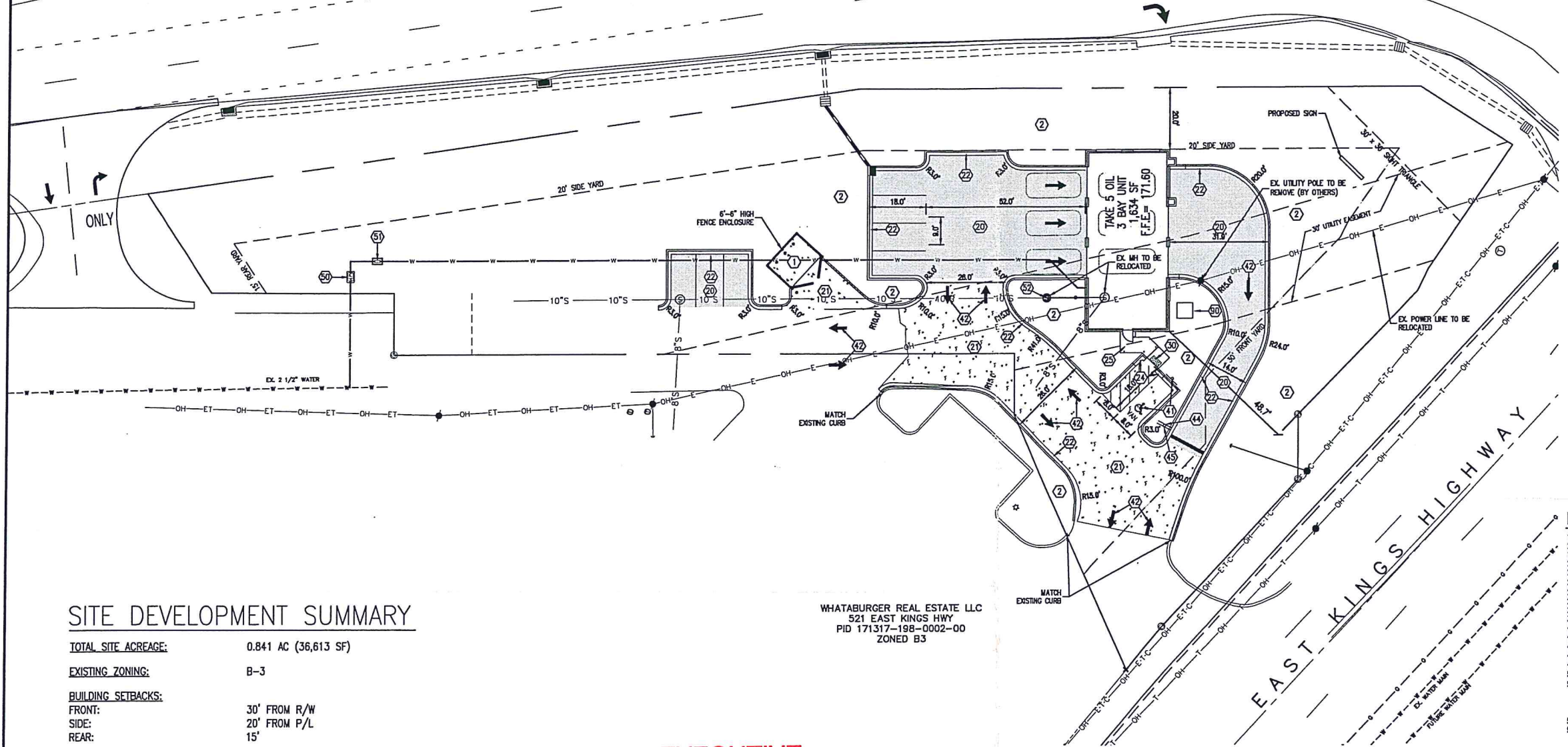


YOU'REE DRIVE (LA. HIGHWAY 1)



STIPULATION FOR REUSE
 THIS DRAWING WAS PREPARED FOR A SPECIFIC SITE, AND IT IS NOT SUITABLE FOR USE ON A DIFFERENT PROJECT SITE OR AT A LATER TIME. THE USE OF THIS DRAWING FOR REFERENCE OR EXAMPLE ON ANOTHER PROJECT REQUIRES THE SERVICES OF PROPERLY LICENSED ARCHITECTS AND ENGINEERS. REPRODUCTION OF THIS DRAWING FOR REUSE ON ANOTHER PROJECT IS NOT AUTHORIZED AND MAY BE CONTRARY TO THE LAW.

TAKE 5 OIL CHANGE, LLC
525 E. Kings Highway
 0.84 acres (36,613 S.F.)
 Plat# 171317-005-0099-00
 Shreveport, Caddo Parish, Louisiana



LEGEND

- SEWER MH
 - ⚡ POWER POLE
 - CUY WIRE
 - ⊕ BENCHMARK
 - Ⓣ TELEPHONE MH
 - Ⓣ TELEPHONE PEDESTAL
 - Ⓣ ELECTRICAL PEDESTAL
 - CONCRETE WHEELSTOP
 - PROPERTY LINE
 - ADJACENT PROPERTY LINE
 - SAN. SEWER MAIN
 - TOP BANK
 - CONTOUR - MAJOR
 - CONTOUR - MINOR
 - EX. STORM PIPE
 - OVERHEAD ELECTRIC
 - OVERHEAD ELECTRIC & TELEPHONE
 - OVERHEAD ELECTRIC, TELEPHONE & CABLE TV
 - OVERHEAD TELEPHONE
 - IRON PIPE
 - "X" IN CONC.
 - CONC. NAIL
 - IRON ROD
 - Ⓣ SURFACE INLET
 - Ⓣ SURFACE INLET
 - Ⓣ CURB INLET
 - SET 1/2" IRON PIPE
 - STANDARD DUTY ASPHALT PAVEMENT
 - CONCRETE PAVEMENT
- * USE CITY STANDARD DETAIL AND SPECIFICATIONS FOR CONCRETE PAVING

KEY NOTES

- 1 DUMPSTER ENCLOSURE
- 2 LANDSCAPE AREAS
- 17 CONCRETE MANHOLE
- 21 STANDARD DUTY ASPHALT PAVEMENT
- 21 CONCRETE PAVEMENT
- 22 18" CONCRETE CURB AND GUTTER
- 24 3" TRANSITION FROM FULL CURB HEIGHT TO NO CURB
- 25 CONCRETE SIDEWALK
- 29 ADA SIDEWALK RAMP
- 30 DETECTABLE WARNING SURFACE
- 41 HANDICAP PARKING SIGNS AND MARKINGS
- 42 DIRECTIONAL ARROW
- 43 4" DOUBLE YELLOW STRIPE
- 44 STOP SIGN R1-1
- 45 DO NOT ENTER SIGN RS-1
- 50 1-1/2" POTABLE WATER METER BY CITY REQUIREMENTS
- 51 1-1/2" REDUCED PRESSURE PRINCIPLE BACKFLOW PREVENTION ASSEMBLY INSTALLED ABOVE-GROUND WITHIN INSULATED ENCLOSURE PER CITY REQUIREMENTS. ENCLOSURE TO INCLUDE DRAIN PORT(S) FOR DISCHARGE WATER PER CITY REQUIREMENTS.
- 52 SANITARY MANHOLE
- 90 PAD MOUNTED TRANSFORMER - COORDINATE WITH UTILITY PROVIDER

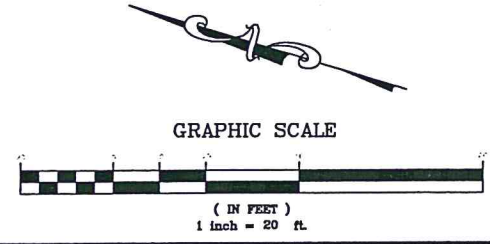
SITE DEVELOPMENT SUMMARY

TOTAL SITE ACREAGE: 0.841 AC (36,613 SF)
EXISTING ZONING: B-3
BUILDING SETBACKS:
 FRONT: 30' FROM R/W
 SIDE: 20' FROM P/L
 REAR: 15'
PROPOSED USE: COMMERCIAL - EXPRESS OIL CHANGE
REFUSE COLLECTION: PRIVATE
PARKING:
 REQUIRED: 8 SPACES (1 ADA SPACE) 1 SPACE/200 S.F.
 PROVIDED: 14 SPACES (1 ADA SPACE)
SITE AREAS:
 EXISTING IMPERVIOUS AREA: 23,503 S.F. (0.54 AC = 64.2%)
PROPOSED IMPERVIOUS AREA:
 BLDG FOOT PRINT: 1,576 S.F. (0.036 AC = 4.3%)
 PAVEMENT: 12,464 S.F. (0.286 AC = 34.0%)
TOTAL IMPERVIOUS AREA: 14,040 S.F. (0.322 AC = 38.4%)
DISTURBED AREA: 17,606 S.F. (0.40 AC = 48.1%)
SOIL TYPE: UB
WATERSHED: BAYOU PIERRE
LANDSCAPE AREAS:
 INTERIOR ISLAND: 225 S.F.
 ADDITIONAL AREA WITHIN PARCEL: 22,352 S.F.
TOTAL LANDSCAPED AREA: 22,573 S.F.

WHATABURGER REAL ESTATE LLC
 521 EAST KINGS HWY
 PID 171317-198-0002-00
 ZONED B3

EXECUTIVE DIRECTOR APPROVAL

11/29/16 Date By *Muy*



One Call 811
 *** 3 Days Before Digging Call ***
 Louisiana 811
 811 or 1-800-271-3020
 Remote Ticket Entry
<http://la.onecall.com/laogin/login.jsp>

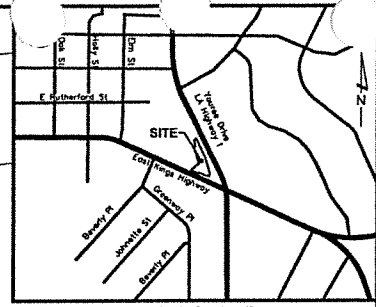
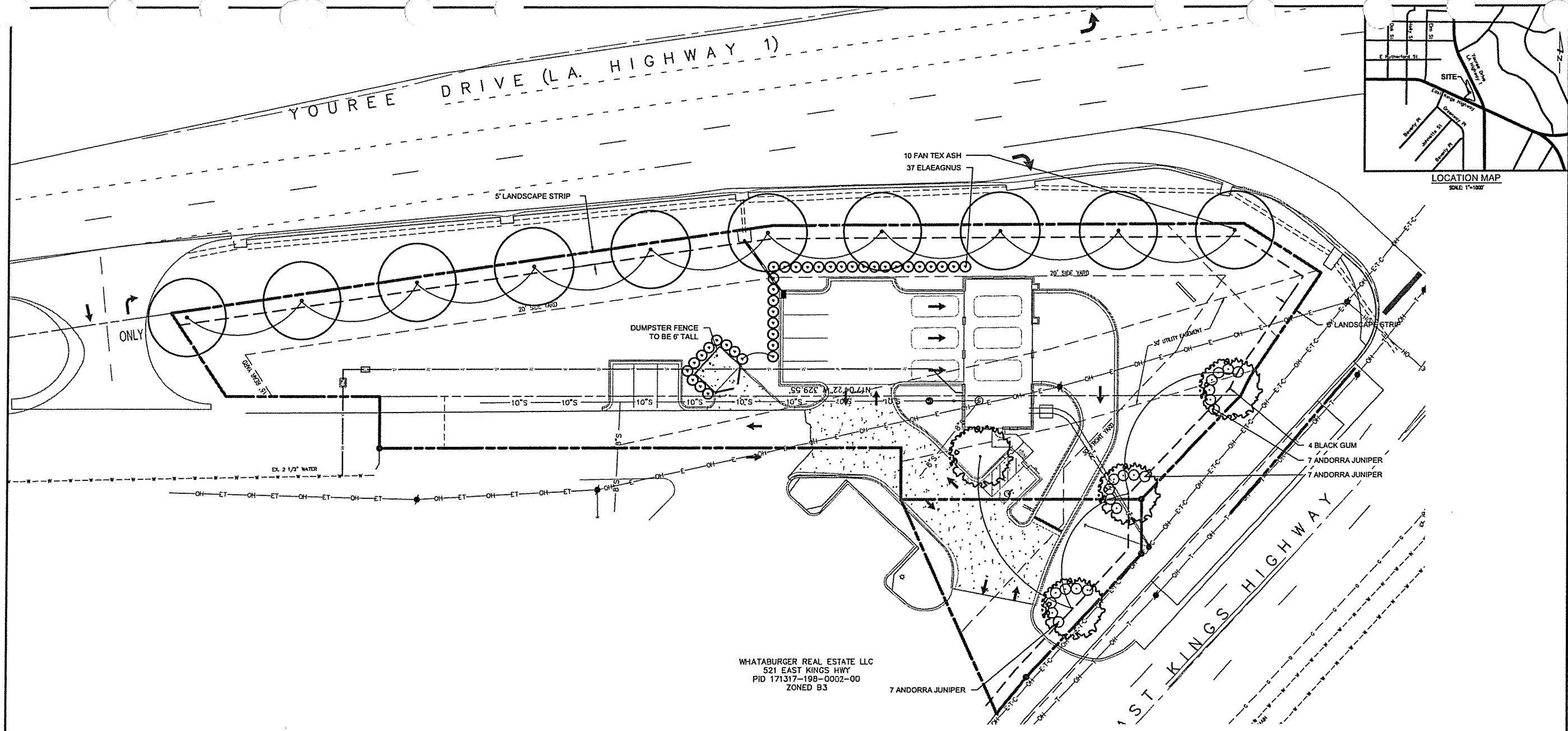
MODIFICATION LOG

NO.	DATE	DESCRIPTION

JOB NUMBER: C160009
 CHECKED BY: SDS
 DRAWN BY: CDA
 SCALE: 1"=20'
 DATE: 09-01-16

9695 # WR1
AMERICAN Engineering
 American Engineering Associates - Southeast, P.A.
 8008 Corporate Center Dr., Suite 110
 Charlotte, NC 28226 704-375-2438

SITE PLAN
 SHEET: C3.0



STIPULATION FOR REUSE
 THIS DRAWING WAS PREPARED FOR A SPECIFIC SITE AND IS NOT SUITABLE FOR USE ON A DIFFERENT PROJECT SITE OR AT A LATER TIME. THE USE OF THIS DRAWING FOR REFERENCE OR EXAMPLE ON ANOTHER PROJECT REQUIRES THE SERVICES OF PROPERLY LICENSED ARCHITECTS AND ENGINEERS. REPRODUCTION OF THIS DRAWING FOR REUSE ON ANOTHER PROJECT IS NOT AUTHORIZED AND MAY BE CONTRARY TO THE LAW.

TAKE 5 OIL CHANGE, LLC
 525 E. Kings Highway
 0.84 acres (36,613 S.F.)
 Plat# 171317-005-0099-00
 Shreveport, Caddo Parish, Louisiana

PRELIMINARY
 NOT FOR
 CONSTRUCTION

MODIFICATION LOG	

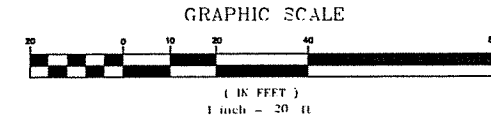
JOB NUMBER: C160009
 CHECKED BY: SDS
 DRAWN BY: CDA
 SCALE: 1"=20'
 DATE: 09-01-16

9695 # FIRM 5496
AMERICAN
 Engineering
 American Engineering Associates - Southeast, P.A.
 8008 Corporate Center Dr. - Suite 110
 Charlotte, NC 28226 704-375-2438

LANDSCAPE
 PLAN

SHEET:
C7.0

WHATABURGER REAL ESTATE LLC
 521 EAST KINGS HWY
 PID 171317-198-0002-00
 ZONED B3



One 811
 *** 3 Days Before Digging Call ***
 Louisiana 811
 811 or 1-800-372-3020
 Remote Ticket Entry
<http://la.811.com/secure/portal/login.jsp>

171317-005-0099-00-01.dwg
 9/1/16 10:00 AM
 C:\Users\cda\OneDrive\Documents\Projects\525 E Kings Hwy\171317-005-0099-00-01.dwg
 171317-005-0099-00-01.dwg
 9/1/16 10:00 AM
 C:\Users\cda\OneDrive\Documents\Projects\525 E Kings Hwy\171317-005-0099-00-01.dwg