

mk.	description	by	date
1	PARKING LOT	D. J. T.	7/16

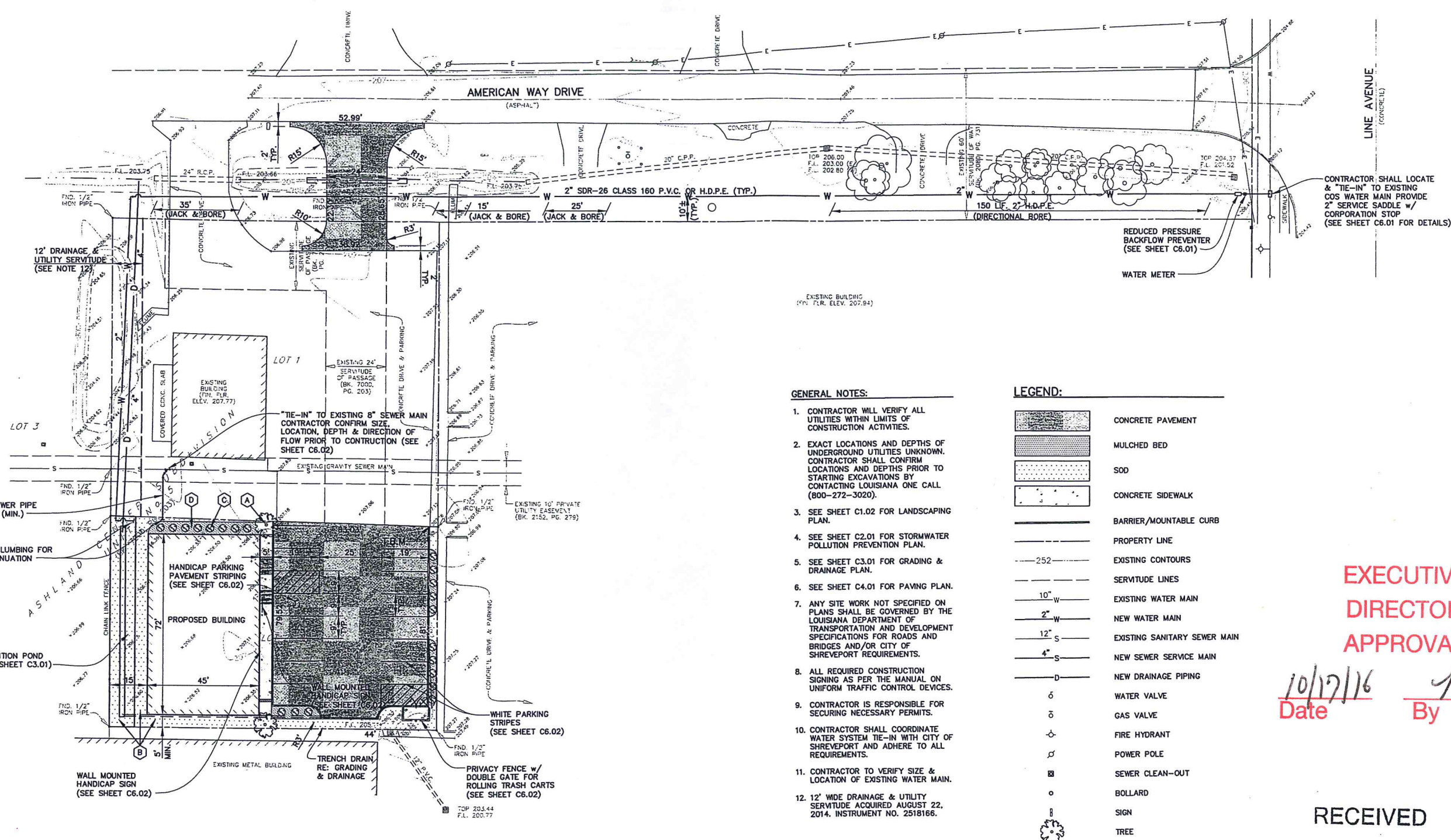
drawn: D. J. T.  
 checked: A. J. V.  
 date: JULY, 2016  
 project: 14050

BALAR ASSOCIATES, INC.  
 631 MILAM STREET, SUITE 300  
 SHREVEPORT, LOUISIANA 71101  
 PHONE: 318-221-8312  
 FAX: 318-424-6508  
 E-MAIL: balar@balar-engineers.com  
 WEB: www.balar-engineers.com  
 LOUISIANA REGISTRATION NO. 64  
 TEXAS REGISTRATION NO. 11221

**BALAR**  
 ENGINEERS & SURVEYORS

SITE PLAN  
 AMERICAN WAY OFFICE BUILDING  
 AMERICAN WAY DRIVE  
 SHREVEPORT, LOUISIANA

sheet no.  
**C1.01**  
 of . sheets



**GENERAL NOTES:**

- CONTRACTOR WILL VERIFY ALL UTILITIES WITHIN LIMITS OF CONSTRUCTION ACTIVITIES.
- EXACT LOCATIONS AND DEPTHS OF UNDERGROUND UTILITIES UNKNOWN. CONTRACTOR SHALL CONFIRM LOCATIONS AND DEPTHS PRIOR TO STARTING EXCAVATIONS BY CONTACTING LOUISIANA ONE CALL (800-272-3020).
- SEE SHEET C1.02 FOR LANDSCAPING PLAN.
- SEE SHEET C2.01 FOR STORMWATER POLLUTION PREVENTION PLAN.
- SEE SHEET C3.01 FOR GRADING & DRAINAGE PLAN.
- SEE SHEET C4.01 FOR PAVING PLAN.
- ANY SITE WORK NOT SPECIFIED ON PLANS SHALL BE GOVERNED BY THE LOUISIANA DEPARTMENT OF TRANSPORTATION AND DEVELOPMENT SPECIFICATIONS FOR ROADS AND BRIDGES AND/OR CITY OF SHREVEPORT REQUIREMENTS.
- ALL REQUIRED CONSTRUCTION SIGNING AS PER THE MANUAL ON UNIFORM TRAFFIC CONTROL DEVICES.
- CONTRACTOR IS RESPONSIBLE FOR SECURING NECESSARY PERMITS.
- CONTRACTOR SHALL COORDINATE WATER SYSTEM TIE-IN WITH CITY OF SHREVEPORT AND ADHERE TO ALL REQUIREMENTS.
- CONTRACTOR TO VERIFY SIZE & LOCATION OF EXISTING WATER MAIN.
- 12' WIDE DRAINAGE & UTILITY SERVITUDE ACQUIRED AUGUST 22, 2014. INSTRUMENT NO. 2518166.

**LEGEND:**

- CONCRETE PAVEMENT
- MULCHED BED
- SOD
- CONCRETE SIDEWALK
- BARRIER/MOUNTABLE CURB
- PROPERTY LINE
- EXISTING CONTOURS
- SERVITUDE LINES
- EXISTING WATER MAIN
- NEW WATER MAIN
- EXISTING SANITARY SEWER MAIN
- NEW SEWER SERVICE MAIN
- NEW DRAINAGE PIPING
- WATER VALVE
- GAS VALVE
- FIRE HYDRANT
- POWER POLE
- SEWER CLEAN-OUT
- BOLLARD
- SIGN
- TREE
- SHRUB

T.B.M.:  
 EDGE OF CONCRETE PAVEMENT @  
 S.E. CORNER OF PARKING FOR LOT 1  
 ELEV. 207.10

**C1 SITE PLAN**  
 SCALE: 1" = 20'

**EXECUTIVE DIRECTOR APPROVAL**  
 10/17/16 Date By *my*

RECEIVED  
 AUG 09 2016  
 METROPOLITAN PLANNING COMMISSION

C-61-110